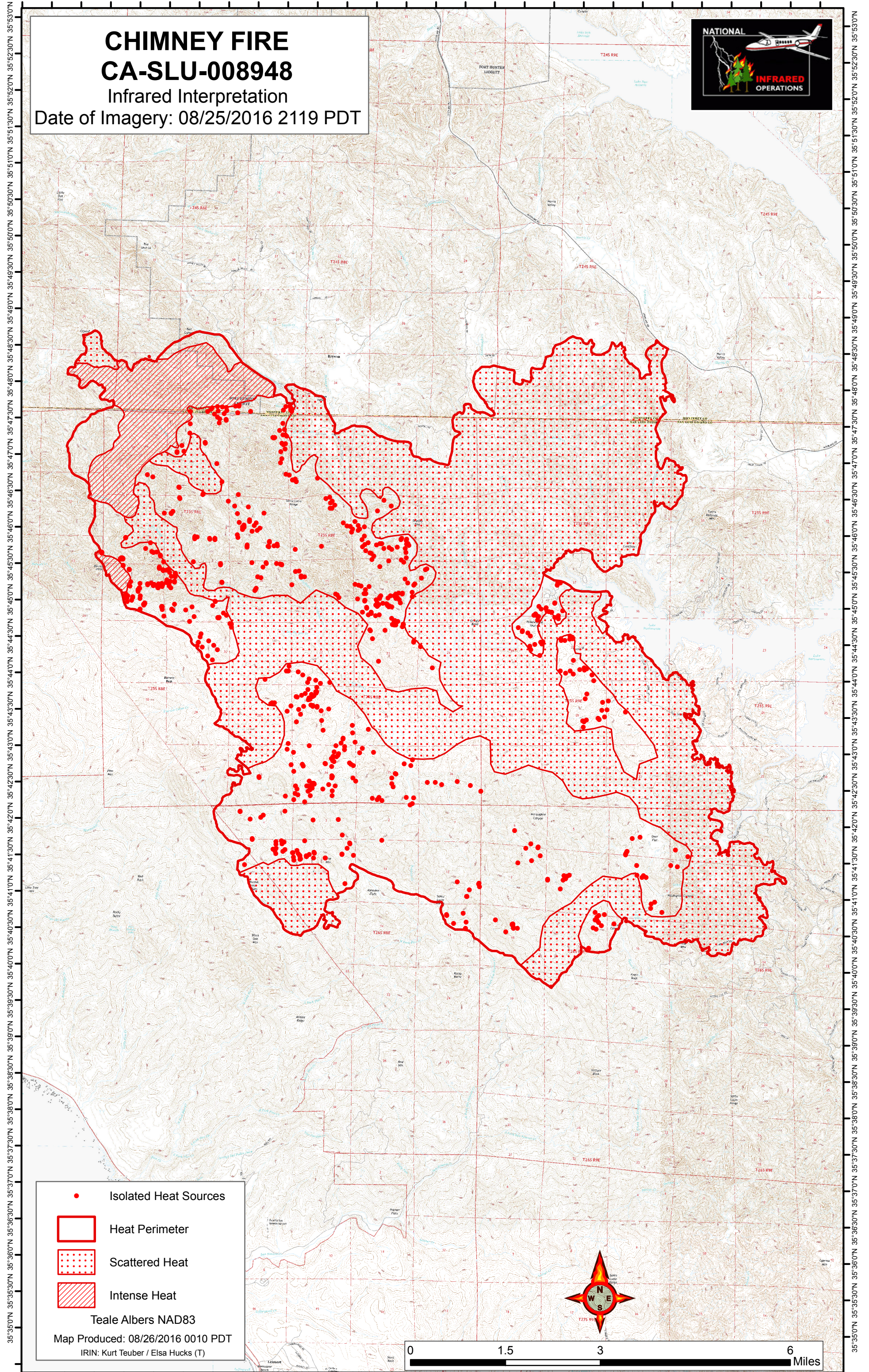






121°10'30"W 121°9'30"W 121°8'30"W 121°7'30"W 121°6'30"W 121°5'30"W 121°4'30"W 121°3'30"W 121°2'30"W 121°1'30"W 121°0'30"W 120°59'30"W 120°58'30"W 120°57'30"W

# CHIMNEY FIRE CA-SLU-008948

Infrared Interpretation

Date of Imagery: 08/25/2016 2119 PDT

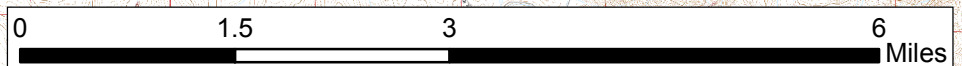


-  Isolated Heat Sources
-  Heat Perimeter
-  Scattered Heat
-  Intense Heat

Teale Albers NAD83

Map Produced: 08/26/2016 0010 PDT

IRIN: Kurt Teuber / Elsa Hucks (T)



35°35'00"N 35°35'30"N 35°36'00"N 35°36'30"N 35°37'00"N 35°37'30"N 35°38'00"N 35°38'30"N 35°39'00"N 35°39'30"N 35°40'00"N 35°40'30"N 35°41'00"N 35°41'30"N 35°42'00"N 35°42'30"N 35°43'00"N 35°43'30"N 35°44'00"N 35°44'30"N 35°45'00"N 35°45'30"N 35°46'00"N 35°46'30"N 35°47'00"N 35°47'30"N 35°48'00"N 35°48'30"N 35°49'00"N 35°49'30"N 35°50'00"N 35°50'30"N 35°51'00"N 35°51'30"N 35°52'00"N 35°52'30"N 35°53'00"N