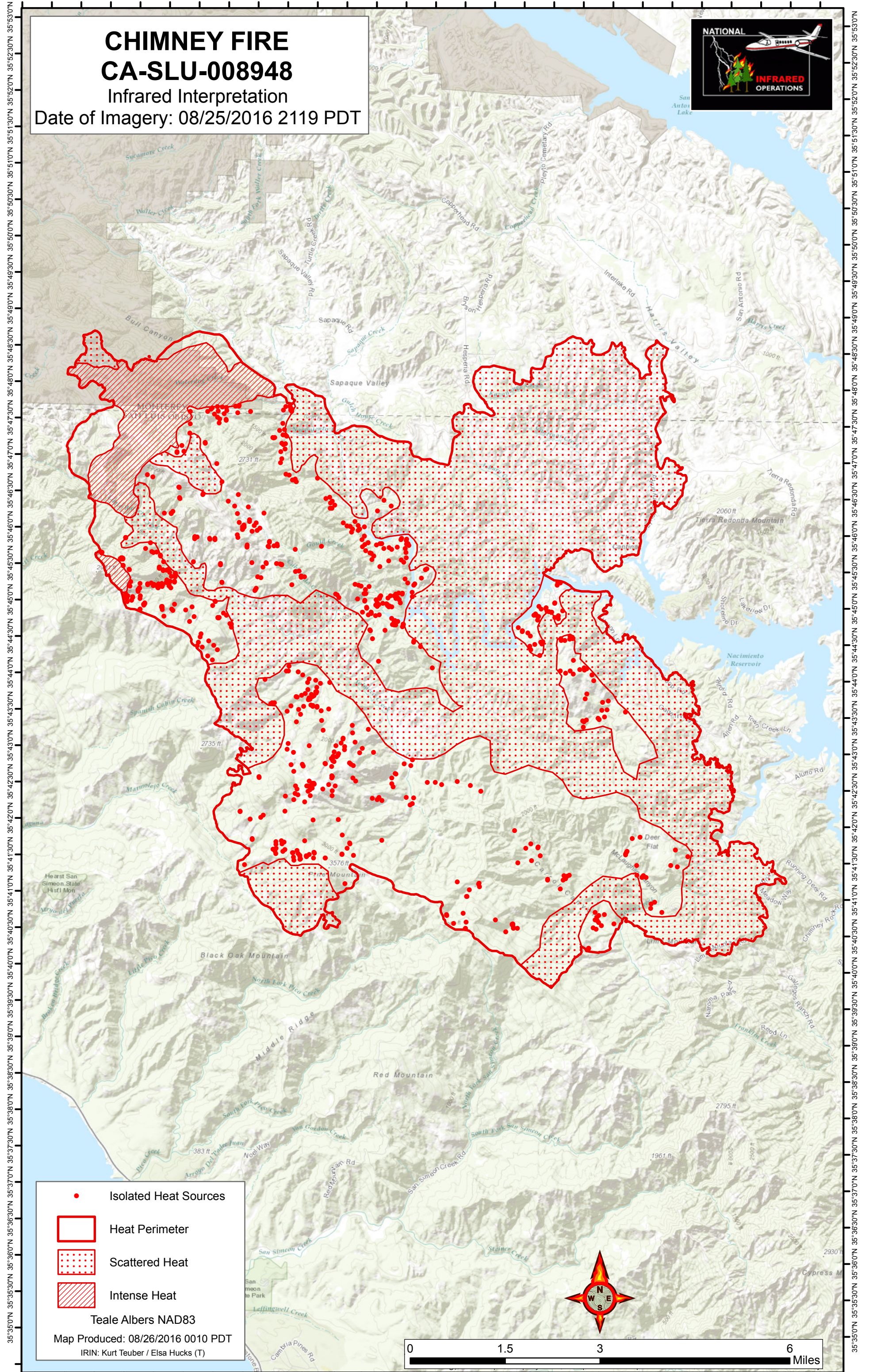


121°10'30"W 121°9'30"W 121°8'30"W 121°7'30"W 121°6'30"W 121°5'30"W 121°4'30"W 121°3'30"W 121°2'30"W 121°1'30"W 121°0'30"W 120°59'30"W 120°58'30"W 120°57'30"W

# CHIMNEY FIRE CA-SLU-008948





Infrared Interpretation

Date of Imagery: 08/25/2016 2119 PDT



35°35'0"N 35°34'30"N 35°34'0"N 35°33'30"N 35°33'0"N 35°32'30"N 35°32'0"N 35°31'30"N 35°31'0"N 35°30'30"N 35°30'0"N 35°29'30"N 35°29'0"N 35°28'30"N 35°28'0"N 35°27'30"N 35°27'0"N 35°26'30"N 35°26'0"N 35°25'30"N 35°25'0"N 35°24'30"N 35°24'0"N 35°23'30"N 35°23'0"N 35°22'30"N 35°22'0"N 35°21'30"N 35°21'0"N 35°20'30"N 35°20'0"N 35°19'30"N 35°19'0"N 35°18'30"N 35°18'0"N 35°17'30"N 35°17'0"N 35°16'30"N 35°16'0"N 35°15'30"N 35°15'0"N 35°14'30"N 35°14'0"N 35°13'30"N 35°13'0"N 35°12'30"N 35°12'0"N 35°11'30"N 35°11'0"N 35°10'30"N 35°10'0"N 35°9'30"N 35°9'0"N 35°8'30"N 35°8'0"N 35°7'30"N 35°7'0"N 35°6'30"N 35°6'0"N 35°5'30"N 35°5'0"N 35°4'30"N 35°4'0"N 35°3'30"N 35°3'0"N 35°2'30"N 35°2'0"N 35°1'30"N 35°1'0"N 35°0'30"N 35°0'0"N

121°10'30"W 121°9'30"W 121°8'30"W 121°7'30"W 121°6'30"W 121°5'30"W 121°4'30"W 121°3'30"W 121°2'30"W 121°1'30"W 121°0'30"W 120°59'30"W 120°58'30"W 120°57'30"W

-  Isolated Heat Sources
-  Heat Perimeter
-  Scattered Heat
-  Intense Heat

Teale Albers NAD83  
Map Produced: 08/26/2016 0010 PDT  
IRIN: Kurt Teuber / Elsa Hucks (T)

