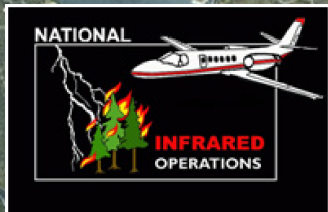
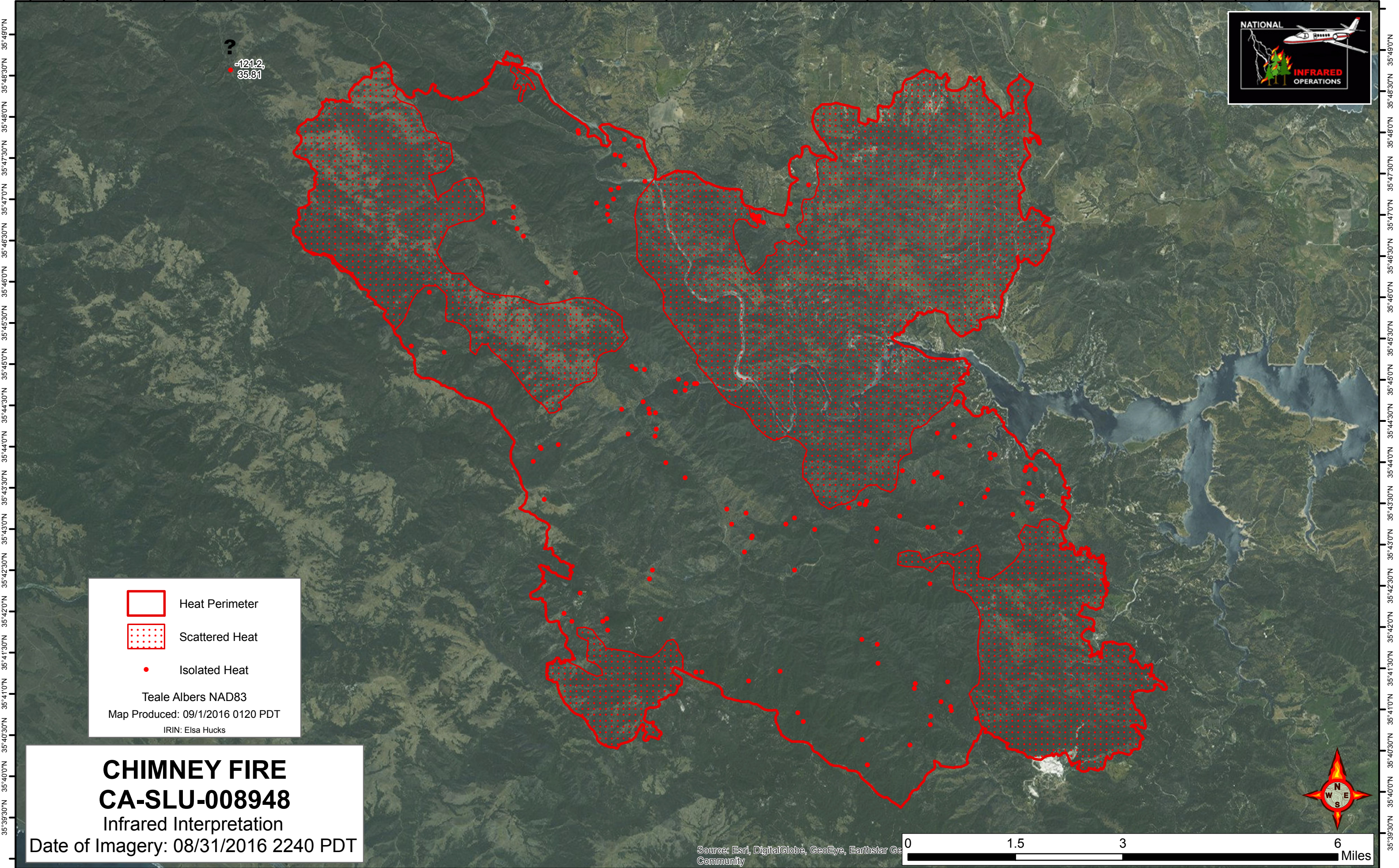





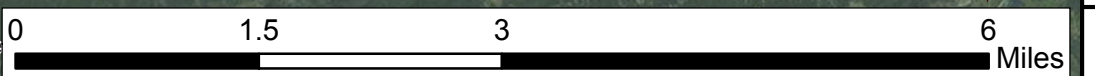
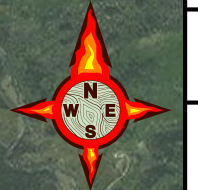
121°15'0"W 121°14'0"W 121°13'0"W 121°12'0"W 121°11'0"W 121°10'0"W 121°9'0"W 121°8'0"W 121°7'0"W 121°6'0"W 121°5'0"W 121°4'0"W 121°3'0"W 121°2'0"W 121°1'0"W 121°0'0"W 120°59'0"W 120°58'0"W 120°57'0"W 120°56'0"W 120°55'0"W



?  
-121.2,  
35.81

 Heat Perimeter  
 Scattered Heat  
 Isolated Heat  
 Teale Albers NAD83  
 Map Produced: 09/1/2016 0120 PDT  
 IRIN: Elsa Hucks

**CHIMNEY FIRE**  
**CA-SLU-008948**  
 Infrared Interpretation  
 Date of Imagery: 08/31/2016 2240 PDT



Source: Esri, DigitalGlobe, GeoEye, Earthstar Ge  
Community

121°15'0"W 121°14'0"W 121°13'0"W 121°12'0"W 121°11'0"W 121°10'0"W 121°9'0"W 121°8'0"W 121°7'0"W 121°6'0"W 121°5'0"W 121°4'0"W 121°3'0"W 121°2'0"W 121°1'0"W 121°0'0"W 120°59'0"W 120°58'0"W 120°57'0"W 120°56'0"W 120°55'0"W