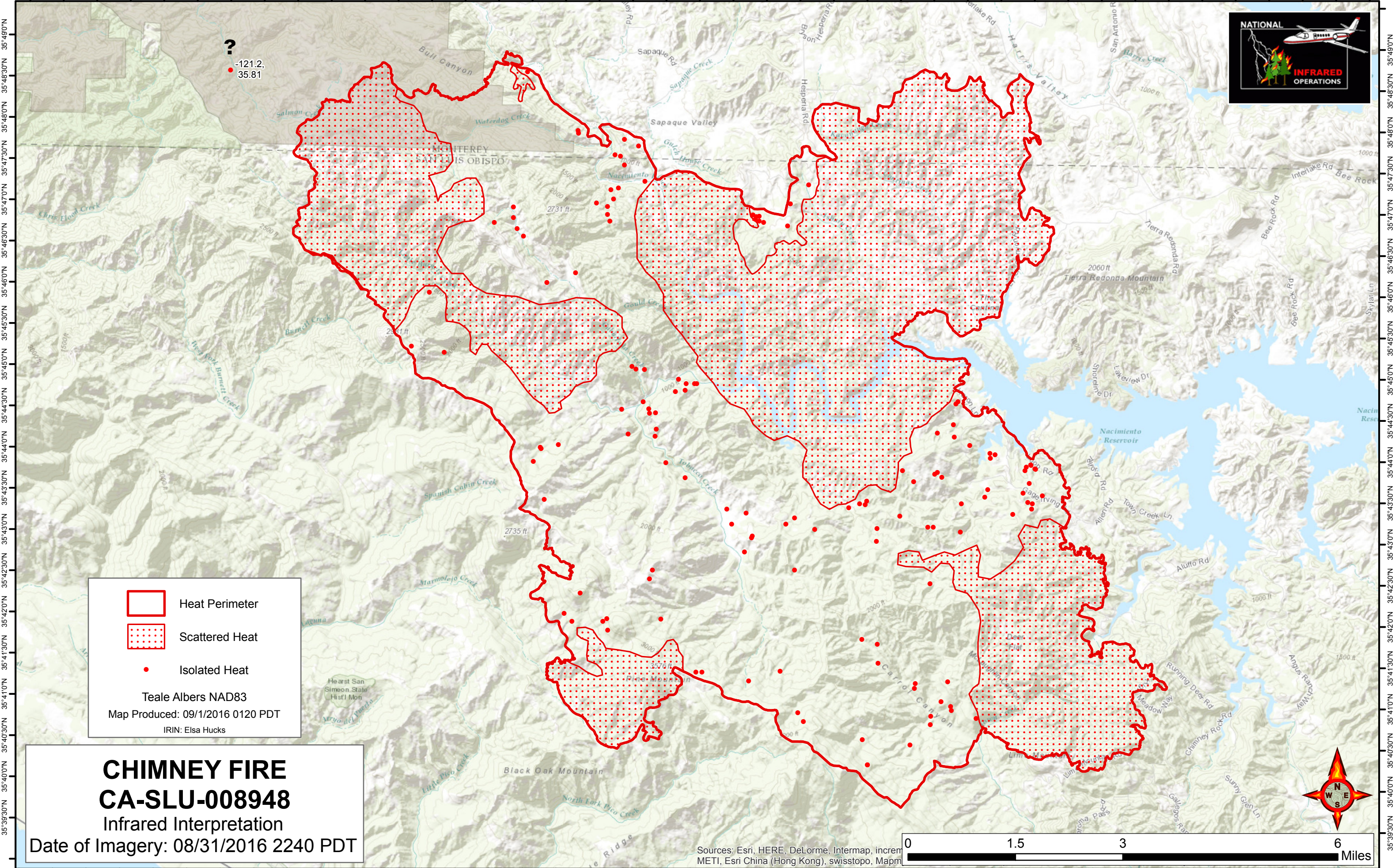



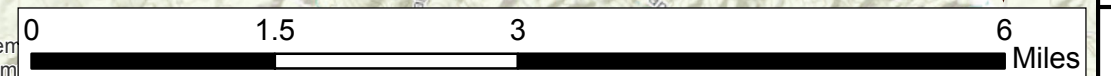


121°15'0"W 121°14'0"W 121°13'0"W 121°12'0"W 121°11'0"W 121°10'0"W 121°9'0"W 121°8'0"W 121°7'0"W 121°6'0"W 121°5'0"W 121°4'0"W 121°3'0"W 121°2'0"W 121°1'0"W 120°59'0"W 120°58'0"W 120°57'0"W 120°56'0"W 120°55'0"W



 Heat Perimeter
 Scattered Heat
 Isolated Heat
 Teale Albers NAD83
 Map Produced: 09/1/2016 0120 PDT
 IRIN: Elsa Hucks

CHIMNEY FIRE
CA-SLU-008948
 Infrared Interpretation
 Date of Imagery: 08/31/2016 2240 PDT



Sources: Esri, HERE, DeLorme, Intermap, increment METI, Esri China (Hong Kong), swisstopo, Mapm

121°15'0"W 121°14'0"W 121°13'0"W 121°12'0"W 121°11'0"W 121°10'0"W 121°9'0"W 121°8'0"W 121°7'0"W 121°6'0"W 121°5'0"W 121°4'0"W 121°3'0"W 121°2'0"W 121°1'0"W 120°59'0"W 120°58'0"W 120°57'0"W 120°56'0"W 120°55'0"W

35°39'30"N 35°40'0"N 35°40'30"N 35°41'0"N 35°41'30"N 35°42'0"N 35°42'30"N 35°43'0"N 35°43'30"N 35°44'0"N 35°44'30"N 35°45'0"N 35°45'30"N 35°46'0"N 35°46'30"N 35°47'0"N 35°47'30"N 35°48'0"N 35°48'30"N 35°49'0"N

35°39'30"N 35°40'0"N 35°40'30"N 35°41'0"N 35°41'30"N 35°42'0"N 35°42'30"N 35°43'0"N 35°43'30"N 35°44'0"N 35°44'30"N 35°45'0"N 35°45'30"N 35°46'0"N 35°46'30"N 35°47'0"N 35°47'30"N 35°48'0"N 35°48'30"N 35°49'0"N