









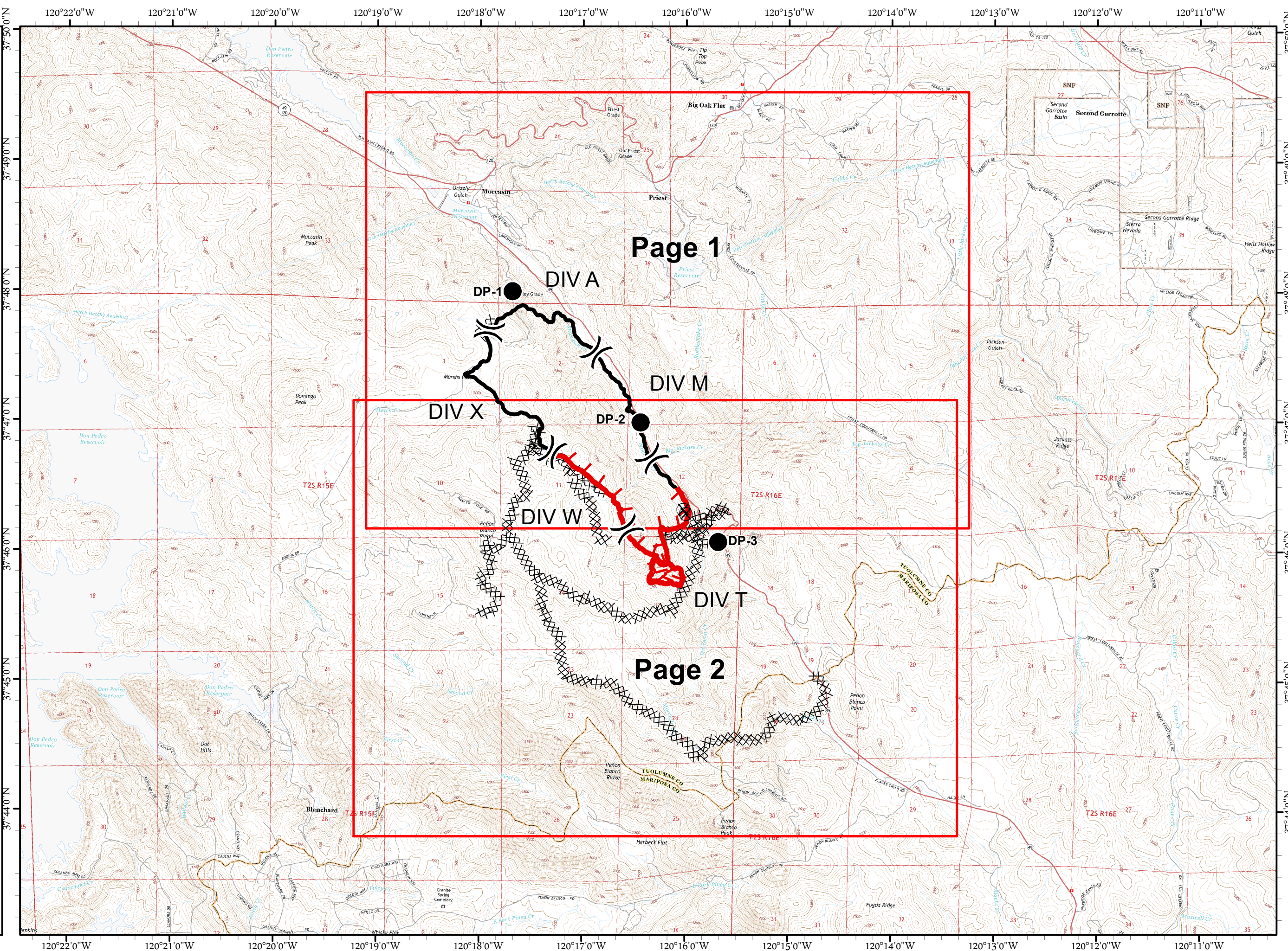
# IAP MAP

Marshes Incident  
CA-TCU-010403  
September 30, 2016  
NAD 83  
Index Page

-  Division Break
-  Uncontrolled Fire Edge
-  Completed Dozer Line
-  Completed Line
-  Drop Point
-  Mine Hazard



Miles  
0 0.5 1



Page 1

Page 2

DIV A

DIV M

DIV X

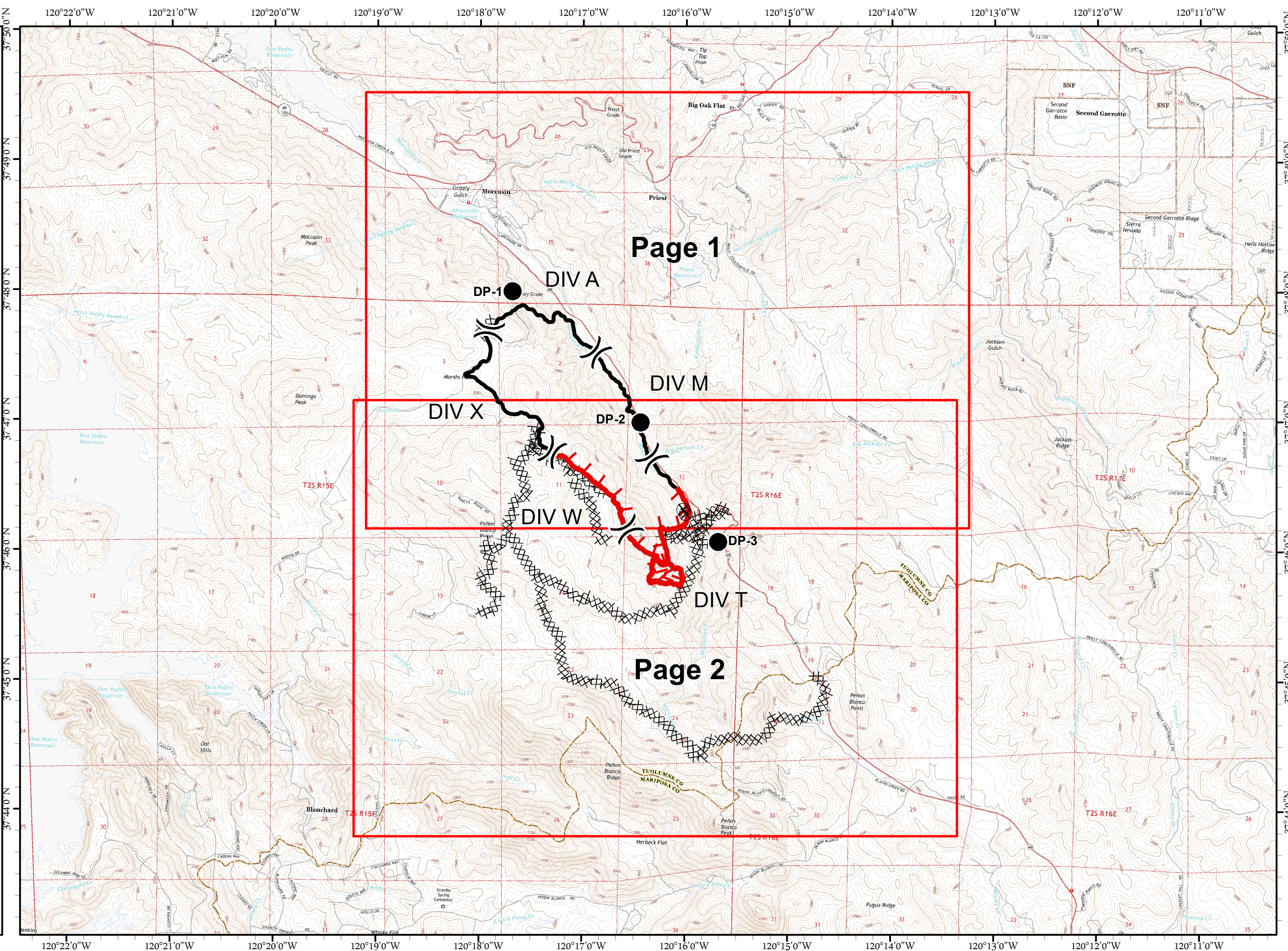
DIV W

DIV T

DP-1

DP-2

DP-3









120°22'0"W 120°21'0"W 120°20'0"W 120°19'0"W 120°18'0"W 120°17'0"W 120°16'0"W 120°15'0"W 120°14'0"W 120°13'0"W 120°12'0"W 120°11'0"W

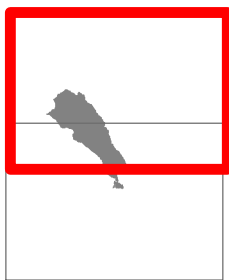
37°50'0"N 37°49'0"N 37°48'0"N 37°47'0"N 37°46'0"N 37°45'0"N 37°44'0"N



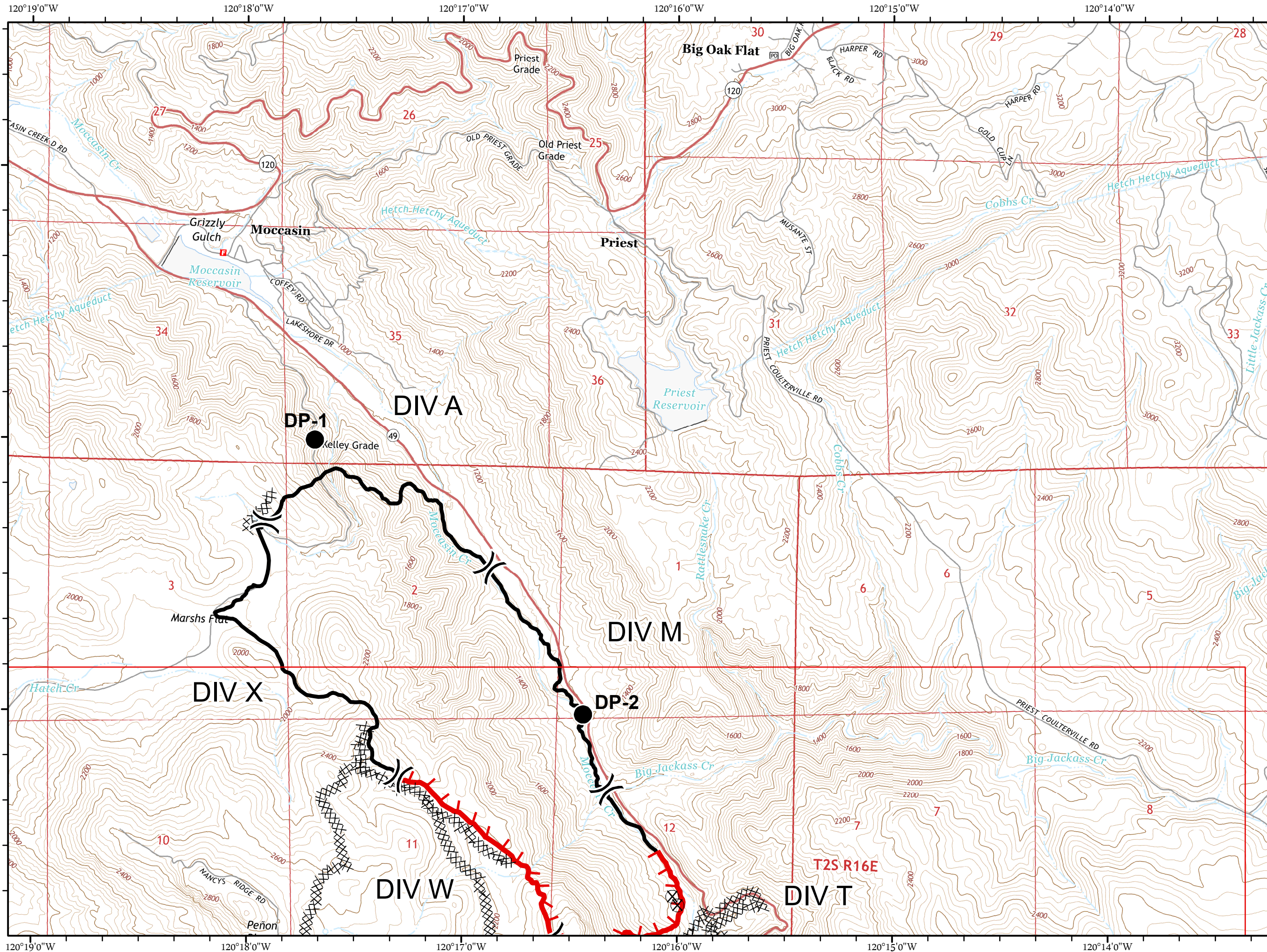
# IAP MAP

Marshes Incident  
CA-TCU-010403  
September 30, 2016  
NAD 83  
Page 1 of 2

-  Division Break
-  Uncontrolled Fire Edge
-  Completed Dozer Line
-  Completed Line
-  Drop Point
-  Mine Hazard









Miles  
0 0.125 0.25 0.5

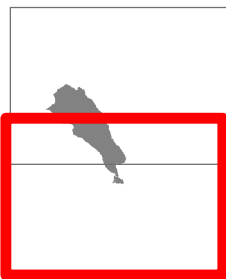




# IAP MAP

Marshes Incident  
CA-TCU-010403  
September 30, 2016  
NAD 83  
Page 2 of 2

-  Division Break
-  Uncontrolled Fire Edge
-  Completed Dozer Line
-  Completed Line
-  Drop Point
-  Mine Hazard



Miles  
0 0.125 0.25 0.5

