

GARZA INCIDENT

CA-FKU-009755

PARK INCIDENT

CA-FKU-010248

INCIDENT ACTION PLAN



OPERATIONAL PERIOD

7/18/2017 0700

to


7/19/2017 0700



INCIDENT OBJECTIVES (ICS 202)

1. Incident Name: <p style="text-align: center; margin-top: 5px;">GARZA & PARK</p>	2. Operational Period:	Date From: 7/18/2017 Time From: 0700	Date To: 7/19/2017 Time To: 0700
3. Objective(s):			
<u>Management Objectives</u> -Provide for emergency personnel and public safety at all times. -Protect property, improvements, and infrastructure. -Ensure coordinated, timely and accurate release of public information. -Foster and maintain relationships with all cooperators and stakeholders. -Protect economic, natural, cultural and heritage resources. -Maintain fiscal accountability and keep costs commensurate with values at risk.			
<u>Garza Control Objectives</u> -Keep the fire within the established perimeter.			
<u>Park Control Objectives</u> -Keep the fire North of Little Cholame Creek -Keep the fire South of State Highway 198 -Keep the fire East of Slacks Canyon -Keep the fire West of Parkfield Ridge			
General Situational Awareness Steep and rugged terrain, critically dry and receptive fuel beds, active area for fire history. Maintain LCES, stay hydrated and be aware of mine shafts.			
5. Site Safety Plan Required? Yes <input type="checkbox"/> No <input checked="" type="checkbox"/>			
Approved Site Safety Plan(s) Located at:			
6. Incident Action Plan			
<input checked="" type="checkbox"/> ICS 203	<input checked="" type="checkbox"/> ICS 204	<input type="checkbox"/> WUI Guidelines	<input checked="" type="checkbox"/> Finance Message
<input checked="" type="checkbox"/> Weather Forecast	<input checked="" type="checkbox"/> ICS 220	<input checked="" type="checkbox"/> Suppression Repair	<input checked="" type="checkbox"/> PIO Message
<input checked="" type="checkbox"/> Fire Behavior	<input checked="" type="checkbox"/> ICS 206	<input type="checkbox"/> Logistics Message	<input checked="" type="checkbox"/> Transportation Map
<input checked="" type="checkbox"/> Safety Message	<input checked="" type="checkbox"/> ICS 205	<input checked="" type="checkbox"/> Demob Plan	<input checked="" type="checkbox"/> Base Camp Map
<input checked="" type="checkbox"/> ICS 215A	<input type="checkbox"/> Firing Ops Checklist	<input checked="" type="checkbox"/> Training Message	<input checked="" type="checkbox"/> ICS 214
7. Prepared By: Andy Murphy	Position/Title: PSC	Signature:	
8. Approved by Incident Commander:	Glenn Patterson	Signature: _____	
ICS 202			

ORGANIZATION ASSIGNMENT LIST (ICS 203)

1. Incident Name: GARZA & PARK		2. Operational Period: Date From: 7/18/2017 Time From: 0700		Date To: 7/19/2017 Time To: 0700	
3. Incident Commander(s) and Command Staff:			7. Operation Section:		
IC/UC's	Glenn Patterson / Gary Croucher (T)		Chief	Mike Inman	
Deputy	Ron Myers		Deputy	Abdul Ahmad (T)	
Safety Officer	Steve Walker		Night Ops	John Messina	
Information Officer	Ron Oatman / Jeremy Rahn (T)				
Liaison Officer	Mike Martin / Jeff Johnson (T)		Branch	Garza	Matt Dunham
LE Liaison Officer	John McCammon / Kevin Pack		Division/Group	A/F/K/L/M	Andy Cosentino (T)
			Division/Group	Q/R/U/Z	Brad Lowry
			Division/Group	Suppression Repair	Guy Anderson
4. Agency/Organization Representatives:					
Agency/Organization	Name		Division/Group		
FKU	Billy See		Division/Group		
BEU	John Owens		Branch	Park	Charlie Blankenheim
BLM	Michael Chiodini		Division/Group	A	William Barteau
Kings County Fire	Clay Smith		Division/Group	M	Nick Casci / Jacob Wells (T)
Fresno Co. Sheriff	Lt. John Reynolds		Division/Group	Z	TBD
Monterey Co. Sheriff	Keith Wingo		Staging Area	Park	Travis Rye
CDCR	Keith Guillory		Division/Group		
CCC	Angel Parga		Branch		
PG&E	Tom Baker		Division/Group		
CAL OES FIRE	Javier Lara		Division/Group		
CAL OES LAW	Jared McCormick		Division/Group		
Cal Trans	Danny Mize		Division/Group		
			Division/Group		
5. Planning Section:			Branch		
Chief	Andy Murphy		Division/Group		
Deputy	Jeff Windham		Division/Group		
Resource Unit	Keith Tsudama / Andy Hubbs / Kyle O'Neil		Division/Group		
Situation Unit	Robert Clark / Roger Noon (T)		Division/Group		
Documentation Unit	Christina Brady		Division/Group		
Demobilization Unit	Nick Lawlor		Branch		
GISS	Fred Postler		Division/Group		
FBAN	Renee Henault		Division/Group		
IMET	Julia Ruthford		Division/Group		
Training Tech Spec	Claudia Soiza		Division/Group		
Crew Tech Spec.			Division/Group		
			Air Operations Branch	Director:	Rob Sonsteng
6. Logistics Section				Air Support Grp Sup	Mark Kalisek
Chief	Ken Lowe			Helibase Manager	Byron Vance
Deputy	Millford Ferguson				
Supply Unit	Brian Robbins		8. Finance/Administration Section:		
Facilities Unit	Devon Ellsworth / Scott Irvine		Chief	Bill Winter	
Ground Support Unit	Michael Esparza / Owen Starkweather		Deputy	Dale Barnett / Scott Henry	
Hired Equipment Tech	Matt Douglas		Time Unit	Chucke Carroll	
Communications Unit	John Aguilera		Procurement Unit	Joe Flagg	
Medical Unit	Matt Lathrop / Justin VanderHulst (T)		Comp/Claims Unit	Joseph Ekblad	
Motel Tech Spec	Justin Chaplin / Pat Buchner (T)		Cost Unit	Michele Patton	
Prepared By: Name:	Andy Murphy	Position/Title:	PSC	Signature:	
ICS 203		Date/Time:	7/17/2017 2300 hours		

FIRE WEATHER FORECAST

FORECAST NO. 6

NAME OF FIRE: Garza Fire


PREDICTION FOR: Tuesday July 18, 2017

UNIT: Cal Fire Fresno-Kings Unit

TIME AND DATE

FORECAST ISSUED: 1600 Monday 7/17/17

SIGNED: _____


Julia Ruthford

Incident Meteorologist

WEATHER DISCUSSION: A gradual increase in onshore flow along the coast as the upper ridge shifts east will bring a slight cooling trend and breezy westerly winds each afternoon. Otherwise winds will be terrain driven up-slope/up-valley with warm and dry conditions continuing through the week. The westerly afternoon winds will enhance southwest up-slope winds late morning through mid-afternoon and then bring the potential for strong channeled SW to NW down-valley winds in aligned valleys.

DIURNAL 20 FOOT WIND PATTERN - EXPECTED EACH DAY TUESDAY THROUGH THURSDAY:

Div M/west Q: NE winds 3 to 5 mph increasing to 6 to 8 mph late-morning through early afternoon. Winds along the ridges shifting to W-NW 10 mph around 1500. Winds in the vicinity of Jasper Creek and Devil's Gate becoming SW 4 to 6 late afternoon and early evening.

Div F/K/L: NE winds 3 to 5 becoming S-SW mid-morning and increasing to 8 to 10 mph with gusts 15 to 20 mph in the afternoon.

Div A/Z: Light SE winds increasing to 10 to 15 mph by late morning...strongest along Avenal Canyon and similarly oriented valleys. Winds becoming NW 10 to 15 mph after 1700.

Div R/U/east Q: SE winds 3 to 5 mph increasing to 5 to 8 mph with gusts to 15 mph by late morning. Winds becoming SW 10 to 15 with gusts to 20 mph around 1700...with local channeled down-valley winds 20 to 30 mph possible in deeper valleys with a westerly alignment.

Nighttime Winds: W-SW 10 to 15 mph becoming down-slope/down valley 2 to 4 mph after 0200.

TUESDAY: Very warm, sunny and dry.

MAX TEMP: Highs 100 to 104 valleys to lower 90s ridges.

MIN TEMP: Lows in the mid-70s.

MIN RH: 12 to 14%.

MAX RH: 35 to 40% valleys...around 25% midslope.

STABILITY: Unstable in the afternoon. Mixing heights to 11,000 ft. Inversions forming around 0200

CHANCE OF WETTING RAIN: 0%.

LAL: 1.

WEDNESDAY: Warm, sunny and continued dry.

MAX TEMP: Highs 98 to 102 valleys to around ridges.

MIN TEMP: Lows in the mid-70s.

MIN RH: 13 to 15%.

MAX RH: Around 40% valleys...25 to 30% midslope.

STABILITY: Unstable in the afternoon. Mixing heights to 10,000 ft. Inversions forming around 0200

CHANCE OF WETTING RAIN: 0%.

LAL: 1.

THURSDAY: Warm, sunny and continued dry.

MAX TEMP: Highs 97 to 101 valleys to upper 80s ridges.

MIN TEMP: Lows in the low 70s.

MIN RH: 14 to 18%.

MAX RH: 40 to 45% valleys...around 30% midslope.

STABILITY: Unstable in the afternoon. Mixing heights to 10,000 ft. Inversions forming around 0200

CHANCE OF WETTING RAIN: 0%.

LAL: 1.

OUTLOOK FOR FRIDAY THROUGH MONDAY: Warm and dry weather will continue Friday and Saturday followed by a gradual warming trend as upper level ridging builds in from the west. General winds will shift from westerly to progressively more northerly through the weekend. High temperatures 90 to 100 will increase to 95 to 105 by Sunday and Monday. Minimum humidities in the mid teens falling to the lower teens. Nighttime humidity recoveries 25 to 40% lowest mid-slopes and valleys.

FIRE WEATHER FORECAST

FORECAST NO. 1

NAME OF FIRE: Park Fire

PREDICTION FOR: Tuesday July 18, 2017

UNIT: Cal Fire Fresno-Kings Unit

TIME AND DATE

FORECAST ISSUED: 2100 Monday 7/17/17

SIGNED:



Julia Ruthford
Incident Meteorologist

WEATHER DISCUSSION: An increase in onshore flow along the coast will bring a minor cooling trend to the Park Fire with a slight increase in relative humidity; however given the extremely hot and dry conditions over the past several days, even with this moderation, temperatures will still remain above normal and humidities low. East-northeast winds will increase as up-slope/up-valley winds late morning through early afternoon. A westerly surge in the afternoon will switch winds to west-northwest down-valley and along the ridge late afternoon with breezy conditions persisting through the evening.

...Slightly cooler but still very warm. Watch for increasing westerly wind in the afternoon...

TUESDAY:

WEATHER: Sunny, very warm, continued dry.

MAXIMUM TEMPERATURE: Highs 99 to 104 valleys to lower 90s peaks and ridges.

MINIMUM RELATIVE HUMIDITY: 14 to 17%.

20 FOOT WINDS:

East to northeast winds 3 to 5 mph increasing to 8 to 10 mph with gusts to 15 mph by late morning.

Winds shifting to the west-northwest around 1600 and increasing to 10 to 15 mph with gusts to 25 mph after 1600.

STABILITY: Smoke in valley inversions lifting out between 0900 and 1000. Unstable in the afternoon. Mixing heights increasing to 12,000 ft.

CHANCE OF WETTING RAIN: 0%. **LAL:** 1.

TUESDAY NIGHT:

WEATHER: Clear.

MINIMUM TEMPERATURE: Lows in the mid-70s midslope to mid-60s valley bottoms.

MAXIMUM RELATIVE HUMIDITY: 40 to 50% valleys...around 30% midslope.

20 FOOT WINDS: W-NW winds 10 to 15 mph diminishing to 4 to 6 mph after 0200.

STABILITY: Weak inversions forming after 0200.

CHANCE OF WETTING RAIN: 0%. **LAL:** 1.

WEDNESDAY: Continued warm and sunny. Highs ranging from the upper 90s in valleys to upper 80s along peaks and ridges. Lows in the mid 70s mid-slope to mid 60s valleys. Min RHs 15 to 18%. Max RH 35 to 50%...driest in midslope thermal belts. E-NE up-slope/up-valley winds 5 to 10 mph becoming W-NW 10 to 15 mph with gusts 20 to 25 mph late afternoon and evening.

OUTLOOK FOR THURSDAY THROUGH SUNDAY: Warm and dry weather will continue through the end of the week followed by a gradual warming trend as an upper level ridging builds in from the west. General winds will shift from westerly to progressively more northerly through the weekend. High temperatures 90 to 100 will increase to 95 to 105. Minimum humidities in the mid to upper teens will fall back into the lower teens. Nighttime humidity recoveries 25 to 40% lowest mid-slopes and valleys.

FIRE BEHAVIOR FORECAST

FORECAST NUMBER 1	TYPE OF FIRE: WILDFIRE
FIRE NAME PARK	OPERATIONAL PERIOD: IA
DATE ISSUED 7/17/17	TIME ISSUED 1400
UNIT FKU	SIGNED R.Henault

INPUTS

WEATHER SUMMARY

High temps 105-108
Min RH 10-12%
Winds becoming W-NW and increasing to 10-15 MPH with gusts to 20MPH around 1600.
W-NW winds continuing through around 0200, then diminishing to 4-6 MPH.

Overnight lows around 75
Max RH around 40%

OUTPUTS

FIRE BEHAVIOR

GENERAL

FDFM 3% PIG 90%
Estimated LFM (based on yearly averages) 75% New growth 65% Old growth
Forecast SC: 140 Forecast Burning Index: 48
Spotting distance: <1/2 mile

- Expect dangerous rates of spread with alignment of slope and wind. Fuels transition from grass to heavy brush/scattered timber with slope and elevation change.
- **Winds greater than 6mph WILL transition fire into the canopy and carry fire in the brush.**
- Intersecting drainages can create a disruption or concentration in wind flow/eddy effects. Identify areas where unfavorable winds may adversely affect fire behavior

SPECIFIC

In the Grass (GR4)	Flame Length: 13'	Rate of Spread: 169 ch/hr
Brush (SH7)	Flame Length: 25'	Rate of Spread: 135 ch/hr

AIR OPERATIONS:

SAFETY

Fuel loading in the grass is significantly higher than past years, expect slower production rates, resistance to suppression action and higher BTU output. Fuels are very receptive to spotting.



GARZA & PARK SAFETY MESSAGE

Maintain Situational Awareness

INCIDENT: Garza & Park Fire

DATE: July 18, 2017 **TIME:** 0700-0700

Major Hazards and Risks: Limited Resources, Hot dry weather, Hydration and Driving.

Fire Behavior: Fuels are receptive to fire spread. A small amount of wind on this dry fuel changes the game dramatically!! Be alert to changes in wind direction and expect changes in fire behavior. Flare-ups generally occur in deceptively light fuels.

Firing Operations – Brief your crews, maintain LCES, and follow the Firing Operations Checklist in the IAP.

Steep slopes/rolling material: Watch your footing while hiking in steep terrain. Be careful of loose rolling debris. Maintain Situational Awareness.

Personnel: Manage yourself and those around you for fatigue. Drink fluids frequently and eat nutritious food regularly. As fatigue increases, injuries tend to increase also. Keep an eye on your crew and partner. Stay engaged and make smart decisions.

Driving: Slow Down! Drive defensively. Expect the unexpected around every curve. Drive with headlights and seatbelts on. Coordinate your movements on one-lane roads.

Abandoned mines: Potential cave ins if too close, hidden deep shafts.

High voltage powerlines: Follow power line safety guidelines (IRPG pg.24), watch out for burned out power poles.

Review your ICS 206 and know what to do in the event of an (IWI).

Lookouts, Communication, Escape routes, Safety zones

Tailgate Safety

- **Accountability:** everyone checks in and everyone checks out. Supervisors know where their crews are at all times
- **Communication:** everyone knows the com-plan
- **Briefing:** everyone knows the plan and the contingency plan
- **Safety gear:** everyone has the appropriate safety gear in good working condition
- **LCES:** they are clear and made known to everyone

Heat Illness Prevention:

- Drink plenty of fluids:
 - Water and Gatorade
 - Avoid drinking energy drinks
 - Rest when you can
 - Find shade when you can
- Eat nutritious food regularly

Incident Safety Officer: Steve Walker

Incident Commander: Glenn Patterson



GARZA & PARK INCIDENT RISK ANALYSIS (ICS 215a)

DIV	HAZARDOUS ACTIONS/CONDITIONS	MITIGATIONS / WARNINGS / REMEDIES
ALL	FATIGUE/HEAT/DEHYDRATION	<p>Be alert for signs of fatigue and take breaks as necessary.</p> <p>Monitor incoming resources for level of fatigue. Drink water before, during and after shifts, up to 1.5 gal. per shift.</p> <p>Be alert for signs of heat stress in yourself and others; use the buddy system.</p> <p>Eat small meals often and when possible</p> <p>Drink electrolyte drinks at a 3 waters to 1 sport drink ratio.</p>
ALL	STEEP TERRAIN / ROLLING DEBRIS	<p>Watch your footing while hiking in steep terrain.</p> <p>Be careful of loose rolling debris</p> <p>Maintain Situational Awareness.</p>
ALL	LINE CONSTRUCTION	<p>Conduct thorough briefing for all personnel (inside rear cover IRPG).</p> <p>Ensure LCES in place prior to engagement (IRPG p. 6).</p> <p>Establish adequate safety zones (IRPG p.7).</p> <p>Use Downhill Line Checklist (IRPG p. 8).</p> <p>Follow “Look Up, Look Down, Look Around” procedures (IRPG p. 2-3).</p> <p>Utilize Risk Management Process (IRPG p.1).</p>
ALL	BACKFIRING and BURNOUT OPERATIONS	<p>Before beginning a backfiring or burnout operation, assure that:</p> <p>Lookouts are posted, communications are established with both firing and holding teams, Escape routes and safety zones are established and not compromised by the firing operations. Has it been approved and relayed to all adjoining forces. Follow the Firing Operation Checklist in the IAP.</p>
ALL	DRIVING HAZARDS	<p>Slow Down! All roads are open to all traffic</p> <p>Drive defensively! Expect the unexpected around every curve.</p> <p>Drive with headlights and seatbelts on.</p> <p>Narrow dirt roads with limited passing room.</p> <p>Coordinate your movements on one-lane roads.</p> <p>Use warning devices when operating near traffic.</p>
ALL	AIRCRAFT OPERATIONS	<p>Monitor air-to-ground frequency, they are your eyes in the sky.</p> <p>Use air-to-ground frequency to communicate with aircraft.</p> <p>Use clear, concise statements when directing aircraft.</p>
ALL	DOZER SAFETY	<p>Watch for rolling material.</p> <p>Monitor safe working distances.</p> <p>Avoid working below Dozer.</p> <p>Utilize communication with the operator (radio or hand signals)</p> <p>Watch for signs indicating buried high-pressure gas lines</p> <p>Stay out of the dust.</p>
ALL	POWER LINES	<p>Follow <i>Power Line Safety</i> guidelines (IRPG pg.24.)</p> <p>Communicate power line hazards to immediate supervisor and hazard flag accordingly.</p> <p>Flag area around downed power lines and deny access.</p> <p>Treat all downed power lines as energized.</p>
ALL	ABANDONED MINES	<p>Watch for hidden shafts.</p> <p>Do not enter.</p>
ALL	SERPENTINE SOILS (Asbestos) & VALLEY FEVER	<p>Limit exposure to dust.</p> <p>Monitor personnel for signs/symptoms.</p>
Incident Name: GARZA & PARK Fire		<p>DATE PREPARED: July 17, 2017 2030hrs</p> <p>Prepared by: Steve Walker</p>
		<p>OPERATIONAL PERIOD</p> <p>July 18, 2017</p> <p>0700-0700</p>

ASSIGNMENT LIST (ICS 204)

1. Incident Name: GARZA & PARK		2. Operational Period: Date From: 07/18/17 Date To: 07/19/17 Time From: 0700 Time To: 0700				3. Branch: Park Div/Group: M Mike	
4. Operations Personnel: Operations Section Chief: Mike Inman Night Ops: John Messina Branch Director: Charlie Blankenheim Branch Safety: Michael Alforque/ Casey Deal Division/Group Supervisor: Nick Casci / Jacob Wells (T)							
5. Resources Assigned:				Number of Personnel	Request #	Reporting Location, Special Equipment, Remarks, Notes, and Information Time Location	
Resource Identifier	Leader						
STC BEU 9462C	Mancini, Mark A		22	E-99	0700-0700	DP 60	
STC TBD					0700-0700	DP 60	
STC TBD					0700-0700	DP 60	
STG BEU 9465G					0700-0700	DP 60	
STG LAC 1175G	Ybarra, Damian		27		0700-0700	DP 60	
STG LAC 1183G	Velazquez, Michael		30		0700-0700	DP 60	
DOZ PVT E-24			2		0700-0700	DP 60	
DOZ PVT E-25			2		0700-0700	DP 60	
DOZ PVT E-26			2		0700-0700	DP 60	
DOZ PVT E-27			2		0700-0700	DP 60	
W/T PVT E-10			2		0700-0700	DP 60	
W/T PVT E-11			2		0700-0700	DP 60	
W/T PVT E-12			2		0700-0700	DP 60	
W/T PVT E-13			2		0700-0700	DP 60	
6. Work Assignments: Hold and improve line. Construct and improve containment lines..							
7. Special Instructions: **Denotes ALS Resource							
8. Communications (radio and/or phone contact numbers needed for this assignment):							
Name	Ch	Function	Rx Freq	Rx Tone	Tx Freq	Tx Tone	Notes
FKU Local 2	1	COMMAND	151.1600	131.8 (T3)	159.3600	OST	167.9 (T7), 162.2 (T15), 192.8 (T16)
NIFC TAC 6	10	Tactical	166.7750	0.0	166.7750	0.0	
CALCORD	14	MEDICAL	156.0750	156.7 (T6)	156.0750	156.7 (T6)	
CDF T13	15	Air to Ground	151.3775	192.8 (T16)	151.3775	192.8 (T16)	
AIR GUARD	16	EMERGENCY	168.6250	0.0	168.6250	110.9 (T1)	
9. Prepared by: Name:		Keith Tsudama		Pos/Title: RESL		Signature: _____	
ICS 204		Date/Time: 7/17/2017		2300 hours			

MEDICAL PLAN

ICS 206

1. INCIDENT NAME
GARZA & PARK

2. DATE PREPARED
07-17-17

3. TIME PREPARED
1700 hrs

4. OPERATIONAL PERIOD
7/18/17 - 7/19/17
0700 - 0700

5. INCIDENT MEDICAL AID STATIONS

MEDICAL AID STATIONS	LOCATION	PARAMEDICS	
		YES	NO
MERT	Base Camp	X	

6. TRANSPORTATION

A. AMBULANCE SERVICES

NAME	LOCATION	PHONE	PARAMEDICS	
			YES	NO
Coalinga Fire	300 W. Elm Ave, Coalinga	559-935-1652	X	
American Ambulance	2911 E. Tulare Ave, Fresno	Disp. 559-600-7800	X	
SkyLife Air Ambulance	5526 E. Air Corp Way, Fresno	800-305-5433	X	
CHP H-40/ H-70	24Hr Flight/Hoist, Fresno/ Paso Robles	Fireline Emergency Procedures	X	

B. INCIDENT AMBULANCES

NAME	LOCATION	PARAMEDICS	
		YES	NO
Coalinga Fire Medic-252	Parkfield Grade	X	

7. HOSPITALS

NAME Med Net Channel	ADDRESS	TRAVEL TIME		PHONE	HELIPAD		BURN CENTER	
		AIR	GRND		YES	NO	YES	NO
		Coalinga RMC 436.1250 (MED 6)	1191 Phelps Ave, Coalinga LAT 36*9'5.43"N / LONG 120*20'23.56"W		12	60	559-935-6400	X
Adventist Medical Center 463.1750	115 Mall Dr, Hanford LAT 36*19'24"N / LONG 119*40'02"W	22	80	559-582-9000	X			X
Community RMC (Level 1Trauma) 436.0000 (MED 3)	2823 Fresno St, Fresno LAT 36*44'35"N / LONG 119*47'06"W	30	90	559-459-6000	X		X	
Twin Cities	1100 Las Tablas Rd. Templeton LAT 36*12'30"N / LONG 119*47'06"W	25	45	805-434-3500	X			X

8. MEDICAL EMERGENCY PROCEDURES

EMERGENCY FREQUENCY:

LINE EMERGENCY:

Crew Supervisor will contact Division Supervisor with patient complaint/condition and location.

- Division/Group Supervisor contacts:
 - Closest EMS resource
 - Communications Unit
- Communications Unit contacts:
 - Ground or Air ambulance as requested
 - Operations
 - Safety
 - Medical Unit
- Division Supervisor or designee will serve as point of contact and run medical emergency on assigned channel.
 - A pre-assigned tactical frequency (i.e. CALCORD) should be used for IWI and only for duration of need.
- Communications Unit will clear command channel for emergency traffic as needed and only for duration of need.

CAMP EMERGENCY:

Contact Communications for 911 response following local procedures.

- Communications contacts:
 - Medical Unit Leader
 - Crew Supervisor
 - Logistics
 - Comps/Claims
 - Safety

INJURY REPORTING PROCEDURES

NATURE OF INJURY _____
 LOCATION OF PATIENT _____
 POINT OF CONTACT _____
 TRANSPORTATION REQUESTED BY: AIR ___ GROUND ___
 POINT OF PICKUP _____
 LAT _____ LONG _____
 PATIENT UNIT ID _____
 IS AN EMT WITH PATIENT: YES ___ NO ___
 AGE _____
 SEX: MALE ___ FEMALE ___

**ALL EMERGENCIES---Secure the area
and identify witnesses for later
investigation. Keep an accurate log of
events.**

ICS 206
(Rev 03/12)

FR

9. PREPARED BY: (Medical Unit Leader)
Justin VanderHulst MEDL-T

10. REVIEWED BY: (Safety Officer)




ICS 205 - INCIDENT RADIO COMMUNICATIONS PLAN

1. Incident Name: <b style="font-size: 1.2em;">GARZA & PARK	2. Date/Time Prepared Date: 7/17/17 Time: 2000	3. Operational Period: Date From: 7/18/17 Date To: 7/19/17 Time From: 0700 Time To: 0700
---	---	---

4. Communications			
Ch#	Function	Name	Assigned To
1	COMMAND	FKU LOCAL 2	INCIDENT WIDE
2			
3	COMMAND	FKU LOCAL 2	INCIDENT WIDE
4	COMMAND	FKU LOCAL 2	INCIDENT WIDE
5	TACTICAL	CDF TAC 1	GARZA BRANCH ALL DIVISIONS
6	TACTICAL	CDF TAC 24	GARZA BRANCH FIRE SUPP REPAIR
7			
8			
9	TACTICAL	NIFC TAC 5	DIV A
10	TACTICAL	NIFC TAC 6	DIV M
11	TACTICAL	NIFC TAC 7	DIV Z
12			
13			
14	EMS COORDINATION	CALCORD	INCIDENT WIDE
15	AIR TO GROUND	CDF TAC 13	INCIDENT WIDE
16	EMERGENCY ONLY	AIR GUARD	INCIDENT WIDE
17			
18			
19			
20	EMERGENCY ONLY	AIR GUARD	INCIDENT WIDE

5. Special Instructions
 Use the ICS 205 to reference and to correlate with the ICS 204's depending on your work assignments

6. Prepared by (Communications Unit Leader): Name: John Aguilera, COML	Signature:  Date/Time: 07/17/17 2000
---	--

Ch#	Function	Name	Rx Freq	Rx Tone	Tx Freq	Tx Tone	Notes
1	COMMAND	FKU LOCAL 2	151.1600	131.8 (T3)	159.3600	167.9 (T7)	TONE 7 (FLAT TOP MTN)
3	COMMAND	FKU LOCAL 2	151.1600	131.8 (T3)	159.3600	162.2 (T15)	TONE 15 (PRKFLD GRD)
4	COMMAND	FKU LOCAL 2	151.1600	131.8 (T3)	159.3600	192.8 (T16)	TONE 16 (SMITH MTN)
5	TACTICAL	CDF TAC 1	151.2575	192.8 (T16)	151.2575	192.8 (T16)	
6	TACTICAL	CDF TAC 24	151.3175	192.8 (T16)	151.3175	192.8 (T16)	FSR GROUPS 1, 2, 3
14	EMS COORDINATION	CALCORD	156.0750	156.7 (T6)	156.0750	156.7 (T6)	
15	AIR TO GROUND	CDF TAC 13	151.3775	192.8 (T16)	151.3775	192.8 (T16)	
16	EMERGENCY ONLY	AIR GUARD	168.6250	0.0	168.6250	110.9 (T1)	
20	EMERGENCY ONLY	AIR GUARD	168.6250	0.0	168.6250	110.9 (T1)	

Garza Incident Fire Suppression Repair Plan

I. Objectives

The objective of the Suppression Repair Plan is to mitigate possible adverse effects to resources resulting from fire suppression activities on the Mineral Fire in a manner which does not compromise firefighter safety. The mitigations described within this plan have been developed to apply to constructed fire lines, watercourse crossings, access roads, drop points, heli-spots and any other locations disturbed by fire suppression activities. A Repair Specialist will be assigned to ensure that work is done as required and according to the Emergency Fire Suppression Repair Plan. Additional specialists or equipment may be used if the need arises. Specialists will release equipment from the area when their work is completed.

II. General Repair Guidelines

A. Helispots/Staging Areas/Safety Zones

- 1) Re-contour to the original slope as requested by the Repair Specialist.
- 2) Remove soil, and/or breach berms so that runoff can be dissipated. Cross drain these areas to effectively dissipate water runoff.
- 3) Place disturbed vegetation, brush and trees, piled during line construction, on the surface of safety zones and open areas. This may be done with equipment or hand crews.

B. Roads

- 1) Re-establish existing berms where applicable.
- 2) Breach berms to facilitate drainage, where applicable.
- 3) Clean culverts plugged with soil and rock resulting from fire suppression activities.
- 4) Blading or grading of roads may be necessary.
- 5) Out slope all roads minimizing berms.

C. Firelines;

Dozer Lines (SRA, Private land)

- 1) Break apart dozer piles.
- 2) Do not cover lines with brush.
- 3) Remove all berms so that water will not be channeled and allow water to dissipate.
- 3) Remove all materials from watercourses.

Dozer Lines (BLM) Refer to BLM suppression repair guidelines, Refer to ownership map

D. Watercourses

- 1) Watercourse crossings shall be dipped to original configuration. Waterbreaks shall be installed on each side of channel to divert flow off of trails prior to entering watercourse channel.
- 2) Remove all soil and debris that was placed in any stream channel. A Repair Specialist will review the site for acceptability. If all foreign material cannot be removed with heavy equipment, the material shall be removed by hand. The approaches to the crossing may be sloped back to prevent future stream bank failure.

E. Other Repair Concerns

- 1) Remove all trash from fire lines and other affected areas.
- 2) Repair, broken, damaged fences, and/or gates damaged as the result of the fire control operations will be repaired. (Note: Extent and condition of damage should be documented prior to repairs.)
- 3) Identify landowner concerns associated with suppression activities and repair damage



DEMOBILIZATION INSTRUCTIONS

Garza Fire

CA-FKU-009755

Park Fire

CA-FKU-010248



DEMOB PROCEDURES

- CHECK THE DEMOB LIST EACH MORNING. YOU CAN FIND THE DEMOB LIST THROUGH THE “QR” CODE ON THE I.A.P. COVER OR ON LISTS POSTED THROUGHOUT CAMP. **ONLY REPORT TO DEMOB AT YOUR SCHEDULED TIME.** EARLY ADMITTANCE WILL NOT BE ALLOWED.

- PICKUP A DEMOB CHECKOUT FORM (ICS-221) FROM THE DEMOB UNIT, THEN GO TO THE FOLLOWING UNITS TO OBTAIN THE NECESSARY SIGNATURES:
 - ✓ SUPPLY UNIT
 - ✓ COMMUNICATIONS UNIT
 - ✓ GROUND SUPPORT/VEHICLE INSPECTION***
 - ✓ DOCUMENTATION UNIT
 - ✓ TIME UNIT
 - ✓ TRAINING UNIT (IF APPLICABLE)
 - ✓ ACCOMMODATIONS (IF APPLICABLE)

VEHICLE INSPECTION:

- THE DEMOB UNIT WILL INFORM YOU IF THE VEHICLE NEEDS TO BE INSPECTED.
- ***ALL RENTAL VEHICLES WILL BE INSPECTED***
- YOU MUST HAVE THE ICS-221 DEMOB FORM WITH YOU AT VEHICLE INSPECTION.
- A VEHICLE INSPECTION TIME WILL BE PROVIDED WHEN YOU INITIALLY ARRIVE TO THE DEMOBILIZATION UNIT.
- **DO NOT REPORT FOR VEHICLE INSPECTION PRIOR TO YOUR APPOINTMENT**

RETURN THE COMPLETED ICS-221 FORM TO THE DEMOB UNIT AND TRAVEL HOME SAFE!

INCIDENT TRAINING MESSAGE

All trainees on the incident need to check in with
the Training Specialist (TNSP)

- Training Specialist is located in the Plans Building next to Check-In.
- Trainee Data Forms for registering your assignment are available at the training office and the IAP.

Bring the following items for registration:

- Qualification Card.
- Position Task Book

ALL forms are available at the training office.

All assigned trainees must register with the Training Specialist in order to receive proper credit for your assignment.

The Training Specialist is available immediately following the morning Operations Briefing.

Claudia Soiza 949.632.7813





Incident Trainee/Trainer Data Form Park Incident CA-FKU 010248



Training Specialist: Claudia Soiza 949.632.7813

- All Incident trainees, including those on Firefighting Modules at your earliest opportunity complete this form and see the Training Specialist.
- Prior to or as you process through DEMOB, remember to close your training package. To close your training package bring: 1) A performance rating from your trainer. (ICS 225)
2) Your task book that has as many entries as possible by your Trainer.

Trainee Data

Trainee Name: _____ ICS Trainee Position: _____

Request # (A,C,E, or O): _____ Agency Designator (Ex. CA-RRU): _____

Ordered as Trainee? Y N Priority Trainee ____ Local Forest Trainee ____ IMT Trainee

Date Assigned: _____ Cell / Contact # While on Incident: _____

Training Records Mailed To: (Fire Chief, Training Officer):

Name: _____ Title _____

Name of Agency/Unit: _____

Agency/Unit Address: _____

City: _____ State: ____ Zip Code: _____ Phone: _____

Trainee Prerequisites

1. Possesses valid Qualification Card or agency certification card? _____ Yes _____ No

2. Trainee has current position task book issued by home unit? _____ Yes _____ No

Current Task Book Progress (Circle) 0% 25% 50% 75% 90%

Priority Open Task in PTB (What do you need to accomplish on this incident?)

Trainer/Evaluator Data

Trainer / Evaluator Name: _____ ICS position on fire: _____

Home Unit: _____ Agency Designator (Ex CA-RRU): _____

Request # (A,C,E,O): _____

Work Address: _____

City: _____ State: _____ Zip Code: _____

Cell / Contact While on Incident: _____

PARK FINANCE MESSAGE

WATER SOURCES, IN ADDITION TO SURFACE WATER

- Use any of these hydrants, but **ONLY** these hydrants
- Fill out water log at hydrant
- Solar plant (Turkey Flat) hydrant – closest to Divisions F, K, L
- Avenal hydrant (7th & La Vina) – closest to Divisions R, U, Z, A
- High School hydrant (4th & Van Ness) – closest to Divisions M, Q
- Airport hydrant – at the Helibase

OFF-SITE FEEDING

- **NOT** approved

VEHICLE ACCIDENTS

- Vehicles rented by CAL FIRE are considered department vehicles.
- All accident reporting procedures must be followed, including reporting the accident to COMP/CLAIMS and SAFETY.
- Accident reporting forms are available in COMP/CLAIMS.

Personnel

- All personnel have new request numbers and will need to start new time sheets

SHIFT TICKETS

- DIVS must complete shift tickets for all hired equipment, including runners and fallers.
- **All Hired equipment on the Garza incident number until Midnight then transition to the Park Incident Number with new Request numbers.**
- Turn completed shift tickets into finance
- Samples are in your IAP

FINANCE CONTACTS

- Comp/Claims 24/7 Phone: 925-407-6363
- CalOES Rep, Chief Javier Lara, 559-412-1016
- Finance Section Chief, Bill Winter, 805-903-3491
- Deputy Section Chief, Dale Barnett, 530-524-5623

SHIFT TICKET EXAMPLE

EMERGENCY SHIFT TICKET and EVALUATION FORM					Contractor Name		
The responsible Government Officer will complete this form each shift.					Fireline Builders		
Incident or Project Name		Incident Number	Request Number		Operator #1	Operator #2	
Incident Name		CAXXX-000000	E-000		Bob Cranky	Joe Dirt	
Agreement Number					Operator Furnished By:		
XXU - 000000 - 00					<input checked="" type="checkbox"/> Contractor	<input type="checkbox"/> Government	
Equipment Make		Equipment Model / Type				Operating Supplies Furnished By:	
Kenworth		T800 Transport 18 Wheel				<input checked="" type="checkbox"/> Contractor	<input type="checkbox"/> Government
Serial Number		License Number				Equipment Status	
16-17 Alpha Numerics		7 Alpha Numerics				<input checked="" type="checkbox"/> Inspected	<input checked="" type="checkbox"/> Under Agreement
Equipment Use					Released by Government		
(Circle) Hours / Days / Miles					Withdrawn by Contractor		
Date	Start	Stop	Work	Assignment			
Mo / Day							
8/1	0330	0700	3.5	Travel In			
8/1	0701	2400	17	Division X			
					Remarks/Comments **		
					2 Operators N/A NO DAMAGE/ NO CLAIMS		
Vendor Rating					Govt. Rep. Name and Position - PRINT		
Poor*	Avg.	Good	Exc.	N/A	Mike Weber DOZB		
Met Performance Expectations					Govt. Rep. Signature		
Equipment in Safe Working Condition					Mike Weber		
Operator Skill Level					Contractor Signature		
Operates Safely					Bob Cranky		
Operator's Cooperation Level					Date	Time	
Overall Performance					08/02/14	0700	
* NOTE: Any rating of POOR requires an explanation in Comment Section.					CALFIRE 297		
**Final evaluation or for more documentation, use an ICS Form 230 or equivalent.					(Rev 3-2011)		
Pink - Finance	Blue - Home Unit HE Coordinator		Yellow - Vendor		White - Govt Representative		

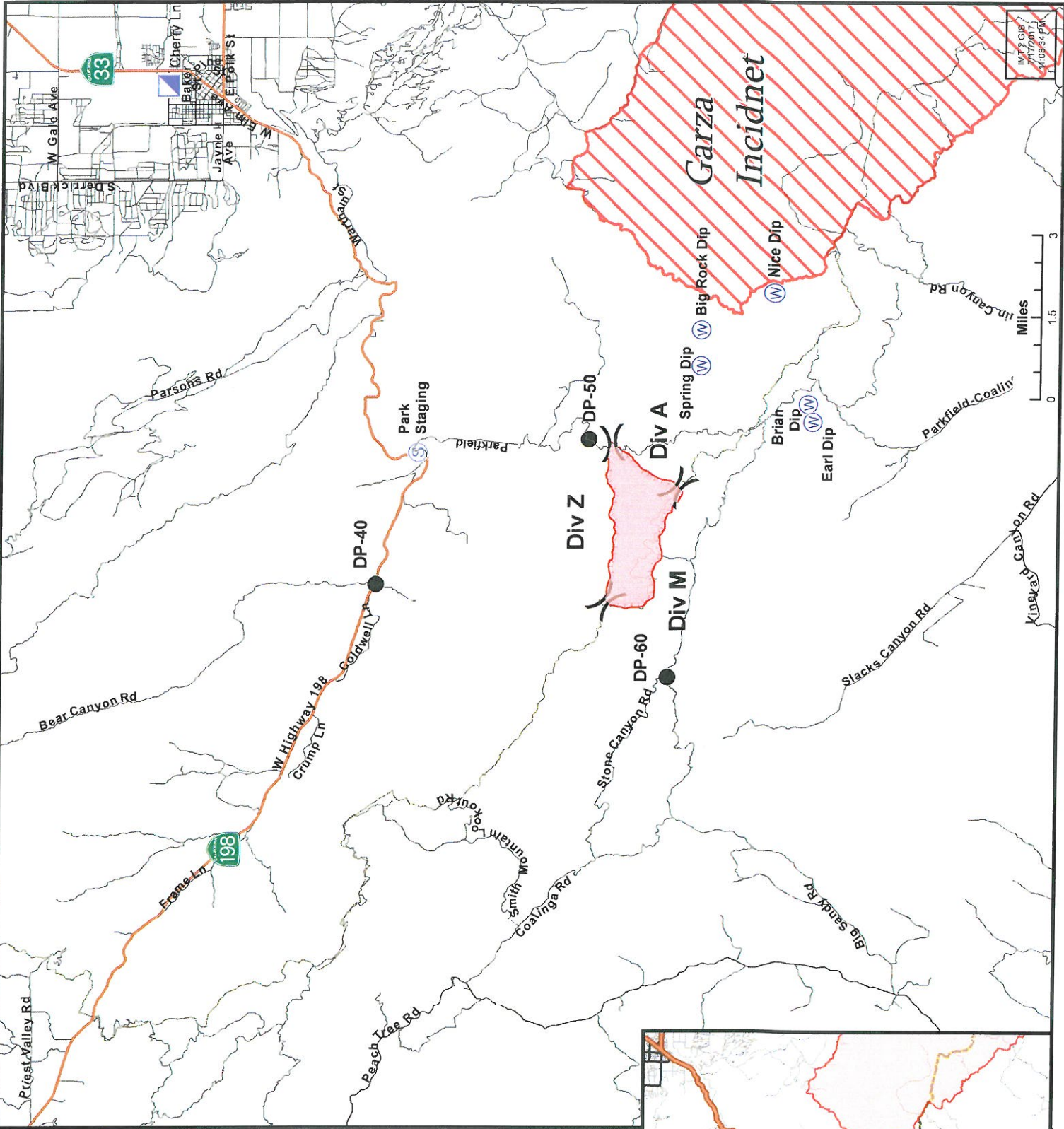
WRITE TICKETS IN BLUE INK

EMERGENCY SHIFT TICKET and EVALUATION FORM					Contractor Name		
The responsible Government Officer will complete this form each shift.					Fireline Builders		
Incident or Project Name		Incident Number	Request Number		Operator #1	Operator #2	
Incident Name		CAXXX-000000	E-000		Bob Cranky		
Agreement Number					Operator Furnished By:		
XXU - 000000 - 00					<input checked="" type="checkbox"/> Contractor	<input type="checkbox"/> Government	
Equipment Make		Equipment Model / Type				Operating Supplies Furnished By:	
Kenworth		T800 Transport 18 Wheel				<input checked="" type="checkbox"/> Contractor	<input type="checkbox"/> Government
Serial Number		License Number				Equipment Status	
16-17 Alpha Numerics		7 Alpha Numerics				<input checked="" type="checkbox"/> Inspected	<input checked="" type="checkbox"/> Under Agreement
Equipment Use					Released by Government		
(Circle) Hours / Days / Miles					Withdrawn by Contractor		
Date	Start	Stop	Work	Assignment			
Mo / Day							
8/1	0330	0700	3.5	Travel In			
8/1	0701	1900	12	Division X			
8/1	1901	2400	5	Off Shift			
					Remarks/Comments **		
					1 Operator NO DAMAGE/ NO CLAIMS		
Vendor Rating					Govt. Rep. Name and Position - PRINT		
Poor*	Avg.	Good	Exc.	N/A	Mike Weber DOZB		
Met Performance Expectations					Govt. Rep. Signature		
Equipment in Safe Working Condition					Mike Weber		
Operator Skill Level					Contractor Signature		
Operates Safely					Bob Cranky		
Operator's Cooperation Level					Date	Time	
Overall Performance					08/02/14	0700	
* NOTE: Any rating of POOR requires an explanation in Comment Section.					CALFIRE 297		
**Final evaluation or for more documentation, use an ICS Form 230 or equivalent.					(Rev 3-2011)		
Pink - Finance	Blue - Home Unit HE Coordinator		Yellow - Vendor		White - Govt Representative		

WRITE TICKETS IN BLUE INK

Turn shift tickets into Finance.

All Shift Tickets NEED TO BE AT FINANCE AT END OF SHIFT



TRANSPORTATION MAP

Park Incident
 CA-FKU-010248
 July 18, 2017

- Division
- Incident Command Post
- Drop Point
- Park Staging
- Water Source
- Fire Perimeter



MFGIS
 07/17/17
 11:09:44 AM

