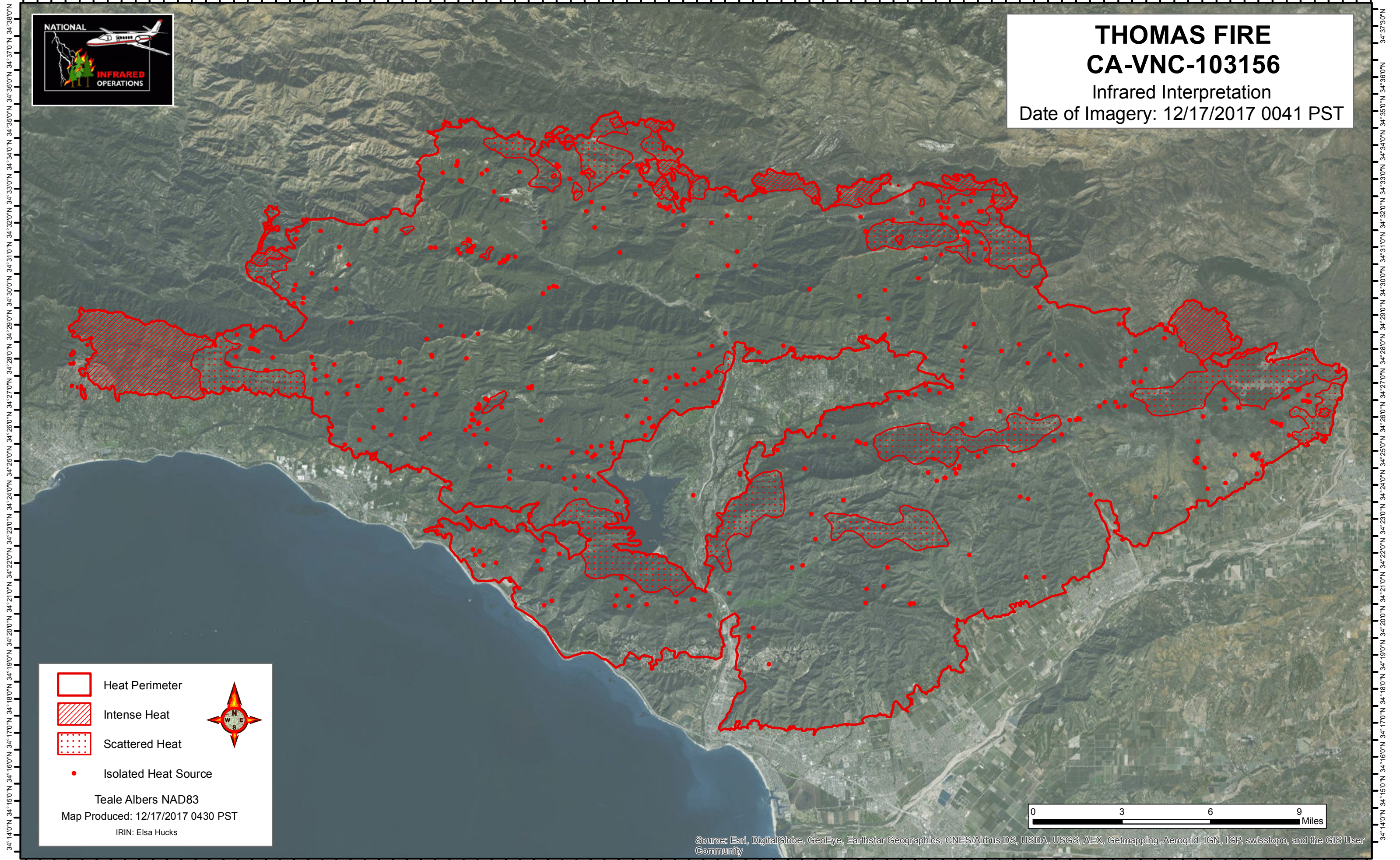






119°41'30"W 119°39'30"W 119°38'00"W 119°36'30"W 119°35'00"W 119°33'30"W 119°32'00"W 119°30'30"W 119°29'00"W 119°27'30"W 119°26'00"W 119°24'30"W 119°23'00"W 119°21'30"W 119°20'00"W 119°18'30"W 119°17'00"W 119°15'30"W 119°14'00"W 119°12'30"W 119°11'00"W 119°9'30"W 119°8'00"W 119°6'30"W 119°5'00"W 119°3'30"W 119°2'00"W 119°0'30"W 118°59'00"W 118°57'30"W 118°56'00"W 118°54'30"W


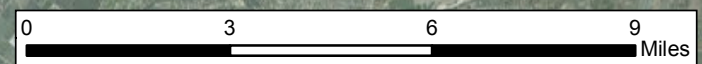


**THOMAS FIRE**  
**CA-VNC-103156**  
Infrared Interpretation  
Date of Imagery: 12/17/2017 0041 PST



-  Heat Perimeter
-  Intense Heat
-  Scattered Heat
-  Isolated Heat Source

Teale Albers NAD83  
Map Produced: 12/17/2017 0430 PST  
IRIN: Elsa Hucks

Source: Esri, DigitalGlobe, GeoEye, Earthstar Geographics, CNES/Airbus DS, USDA, USGS, AEX, Getmapping, Aerogrid, IGN, IGP, swisstopo, and the GIS User Community

34°14'00"N 34°15'00"N 34°16'00"N 34°17'00"N 34°18'00"N 34°19'00"N 34°20'00"N 34°21'00"N 34°22'00"N 34°23'00"N 34°24'00"N 34°25'00"N 34°26'00"N 34°27'00"N 34°28'00"N 34°29'00"N 34°30'00"N 34°31'00"N 34°32'00"N 34°33'00"N 34°34'00"N 34°35'00"N 34°36'00"N 34°37'00"N 34°38'00"N