

**AIRLINE**

**INCIDENT**

**CA-BEU-002666**

**INCIDENT ACTION PLAN**

**EASTERN**

**INCIDENT**

**BEU-002668**

**OPERATIONAL PERIOD**

**6/7/2018 0700**

**to**

**6/8/2018 0700**



# INCIDENT OBJECTIVES (ICS 202)

<b>1. Incident Name:</b> <p style="text-align: center;">AIRLINE</p>	<b>2. Operational Period:</b>	Date From: 6/7/2018	Date To: 6/8/2018
		Time From: 0700	Time To: 0700

**3. Objective(s):**

- Management Objectives**
- Provide for emergency personnel and public safety at all times.
  - Protect property, improvements, and infrastructure.
  - Ensure coordinated, timely, and accurate release of public information.
  - Foster and maintain relationships with all cooperators and stakeholders.
  - Protect economic, natural, cultural, and heritage resources.
  - Maintain fiscal accountability and keep costs commensurate with values at risk.

- Control Objectives**
- |   |   |
|---|---|
| <p>Airline Branch:</p> <ul style="list-style-type: none"> <li>-Keep the fire East of Highway 25</li> <li>-Keep the fire South of Coalinga-Hernandez Rd</li> <li>-Keep the fire West of Beaver Dam Fire Station</li> <li>-Keep the fire North of Bitterwater Valley</li> </ul> | <p>Eastern Branch:</p> <ul style="list-style-type: none"> <li>-Keep the fire East of Highway 25</li> <li>-Keep the fire South of San Benito River</li> <li>-Keep the fire West of Black Mountain</li> <li>-Keep the fire North of Tully Mountain</li> </ul> |
|---|---|

**General Situational Awareness:**

Steep and rugged terrain, critically dry and receptive fuel beds, no recorded fire history with drought-stressed brush.

**5. Site Safety Plan Required?** Yes  No

**Approved Site Safety Plan(s) Located at:**

**6. Incident Action Plan**

<input checked="" type="checkbox"/> ICS 203	<input type="checkbox"/> ICS 215A	<input type="checkbox"/> Phone List	<input checked="" type="checkbox"/> Fire Suppression Repair Plan
<input checked="" type="checkbox"/> ICS 204	<input checked="" type="checkbox"/> ICS 220	<input type="checkbox"/> Training Message	<input checked="" type="checkbox"/> Archaeology Message
<input checked="" type="checkbox"/> ICS 205	<input checked="" type="checkbox"/> Incident Map	<input checked="" type="checkbox"/> Travel Map	<input type="checkbox"/> <i>Jonathan M. Pangburn</i>
<input checked="" type="checkbox"/> ICS 206	<input checked="" type="checkbox"/> Weather Forecast	<input checked="" type="checkbox"/> Demob Plan	<input type="checkbox"/>
<input checked="" type="checkbox"/> ICS 208	<input checked="" type="checkbox"/> Fire Behavior	<input type="checkbox"/> Finance Message	<input checked="" type="checkbox"/> ICS 214

**7. Prepared By:** Jonathan Pangburn      Position/Title: PSC      Signature: \_\_\_\_\_

**8. Approved by Incident Commander:** Brian Nichols      Signature: \_\_\_\_\_

**ICS 202**

## ORGANIZATION ASSIGNMENT LIST (ICS 203)

<b>1. Incident Name:</b>		<b>2. Operational Period: Date From:</b> 6/7/2018		<b>Date To:</b> 6/8/2018	
<b>AIRLINE</b>		<b>Time From:</b> 0700		<b>Time To:</b> 0700	
<b>3. Incident Commander(s) and Command Staff:</b>			<b>7. Operation Section:</b>		
IC/UC's	Brian Nichols	Chief	Arron Young		
Deputy		Deputy			
Safety Officer		Night Ops			
Information Officer	David Clark	Staging Area			
Liaison Officer		<b>Branch</b>	<b>Airline</b>	<b>TBA</b>	
		Division/Group	A/E	Kevin Dixon	
		Division/Group	L	Mark Mancini	
<b>4. Agency/Organization Representatives:</b>			Division/Group		
Agency/Organization	Name	Division/Group			
BLM	Peter Fonken, Burns Brimhall (T)	Division/Group			
		<b>Branch</b>	<b>Eastern</b>	<b>TBA</b>	
		Division/Group	O	Rob Bebensee	
		Division/Group	R	TBA	
		Division/Group	T	Vince Cole	
		Division/Group	Z	Fred Burger (12-hr)	
		<b>Branch</b>	<b>III</b>		
		Division/Group			
		Division/Group			
		Division/Group			
		Division/Group			
		<b>Branch</b>	<b>IV</b>		
<b>5. Planning Section:</b>			Division/Group		
Chief	Jonathan Pangburn	Division/Group			
Deputy		Division/Group			
Resource Unit	Keith Tsudama	Division/Group			
Situation Unit		Division/Group			
Documentation Unit		<b>Branch</b>	<b>V</b>		
Demobilization Unit		Division/Group			
GISS	Elliot Maiorana	Division/Group			
FBAN		Division/Group			
IMET		Division/Group			
Training Tech Spec		Staging Area			
		<b>Air Operations Branch</b>		<b>Director:</b>	
<b>6. Logistics Section</b>			Air Support Grp Sup		
Chief	Mark Mondragon	Helibase Manager			
Supply Unit					
Facilities Unit					
			<b>8. Finance/Administration Section:</b>		
Ground Support Unit	Michael Darcy	Chief	Andrew Corpuz		
Hired Equipment Tech		Time Unit	Heather Constable		
Communications Unit		Procurement Unit	<i>Jonathan M. Pangburn</i>		
Medical Unit		Comp/Claims Unit			
Motel Tech Spec		Cost Unit	Jesse Orozco		
<b>Prepared By: Name:</b> Jonathan Pangburn		<b>Position/Title:</b> PSC		<b>Signature:</b> _____	
<b>ICS 203</b>		<b>Date/Time:</b> 6/6/2018 2300 hours			

**Spot Forecast for Airline...CAL FIRE** 557 PM PDT Wed Jun 6 2018  
National Weather Service San Francisco Bay Area

**.DISCUSSION...**Slightly warmer temperatures are expected Thursday however they will remain cooler than normal as strong onshore flow persists. Gusty winds will persist through Thursday night. Good humidity recoveries are also anticipated Thursday night. Warmer & slightly drier conditions are forecast over the wildfire Friday as the onshore gradient relaxes & high pressure builds over the region

**.THURSDAY...**

Sky/weather.....Sunny.  
Max temperature.....74-79.  
Min humidity.....25-30%.  
Eye level winds.....Southwest winds 2-4 mph shifting to northwest  
8-12 mph with gusts ~20 mph in the afternoon.  
Wind (20 ft).....Southwest winds 2-4 mph shifting to northwest 8  
to 12 mph with gusts ~20 mph in the afternoon.  
CWR.....0%.  
LAL.....1.  
Mixing height.....Increasing to around 4000 ft AGL in afternoon.  
Transport winds.....Northwest 10 to 20 mph.  
Marine layer.....None.

**.THURSDAY NIGHT...**

Sky/weather.....Clear.  
Min temperature.....40-45.  
Max humidity.....70-80%.  
Eye level winds.....Northwest winds 5 to 10 mph with evening gusts  
to 15 mph becoming light overnight.  
Wind (20 ft).....Northwest winds 8 to 12 mph with evening gusts  
around 18 mph becoming light overnight.  
CWR.....0%.  
LAL.....1.  
Mixing height.....Decreasing to near the surface overnight.  
Transport winds.....Northerly around 10 mph.  
Marine layer.....None.

**.FRIDAY...**

Sky/weather.....Sunny.  
Max temperature.....80-85.  
Min humidity.....20%.  
Eye level winds.....Southwest winds 2-4 mph shifting to northwest  
8-12 mph with gusts ~20 mph in the afternoon.  
Wind (20 ft).....Southwest winds 2-4 mph shifting to northwest  
8-12 mph with gusts ~20 mph in the afternoon.  
CWR.....0%.  
LAL.....1.  
Mixing height.....Increasing to around 4000 ft AGL in afternoon.  
Transport winds.....Northwest 10 to 20 mph.  
Marine layer.....None.

## FIRE BEHAVIOR FORECAST

<b>FORECAST NUMBER:</b> 3	<b>TYPE OF FIRE:</b>
<b>FIRE NAME:</b> Airline	<b>OPERATIONAL PERIOD:</b> 6/7/2018 0700 - 0700
<b>DATE ISSUED:</b> 6/6/2018	<b>TIME ISSUED:</b> 2000 <i>Jonathan A. Pangburn</i>
<b>UNIT:</b> CA-BEU-002666	<b>SIGNED:</b> _____ Typed/printed: Jonathan Pangburn, FBAN (T)

### INPUTS

**WEATHER SUMMARY:** COOL & GUSTY, ONSHORE WINDS. WARMING BY END OF WEEK

**Thurs:** 74-79 max temp, 25-30% min RH, winds SW 2-4, shifting to NW 8-12, gusts to ~20

**Thurs Night:** 40-45 min temp, 70-80% max RH, winds NW 5-10, gusts to 15

**Friday:** 80-85 max temp, 20% min RH, wind SW 2-4, shifting to NW 8-12, gusts to 20

### OUTPUTS

#### FIRE BEHAVIOR

##### GENERAL:

Drought has exacerbated fuels condition. Fire behavior may appear similar to late-July/August conditions. No recorded fires in the area; lack of fire history with decadent brush. Cooler conditions and increased humidity will only have marginal impact on fire behavior. Increasing temperatures through the weekend will increase spotting potential, but lack of wind should assist control efforts.

##### SPECIFIC:

**Brush:** 15-25 ft flame length. ~1-mile/hr rate of spread, increasing to 1.5 mile/hr with slope and wind gusts in alignment in decadent brush. Spotting up to 3/4-mile. 75% probability of ignition.

**Grass/Shrub:** 10-15 ft flame length. 3/4- to 1-mile/hr rate of spread. Spotting up to 1/2-mile. 75% probability of ignition.

**Grass:** 1-5 ft flame length. 1-1.5-mile/hr rate of spread, increasing with grass density and wind gusts. Spotting ~1/4-mile, increasing to 1/2-mile with grass density and wind gusts. 75% probability of ignition.

##### AIR OPERATIONS:

Visibility should be favorable for air operations, with mixing height to 4,000 ft. No marine layer predicted. Moderately gusty afternoon and evening conditions may impact air operations.

### SAFETY

Large fire growth remains possible with current fuels situation. Do not let the slightly cooler weather lead to complacency.

## SAFETY MESSAGE/PLAN (ICS 208)

<b>1. Incident Name:</b> AIRLINE	<b>2. Operational Period:</b>	Date From: 6/7/18 Time From: 0700	Date To: 6/8/18 Time To: 0700
-------------------------------------	-------------------------------	--------------------------------------	----------------------------------

<b>S A F E T Y  S A F E T Y  S A F E T Y</b>	<p>Steep winding roads are throughout the incident. Slow down when driving on loose gravel and blind curves. Drive defensively with headlights on and use hands free devices.</p> <p>Working on steep, uneven terrain. Be mindful of rolling materials.</p> <p>Ensure radios are properly programmed for today's IAP and that crews are trained in communications procedures for the incident.</p> <p>Maintain situational awareness. Look up, Look down, Look around</p> <p>Stay hydrated!!! Time to think = time to drink. Document rest and hydration on 214.</p> <p>Remain mindful of what is going on around you! LCES!</p> <p>Avoid complacency!!!! Experiencing extreme fire behavior due to low live and dead fuel moistures, persistent drought, and elevated fire danger rating values.</p>	<b>I T . S  U P  T O  Y O U ! ! ! ! ! ! ! ! ! !</b>
--	---	---

<b>5. Prepared By:</b> ICS 208	Position/Title: SOFR Date/Time: 6/6/2018 / 2030	Signature: _____
-----------------------------------	--	------------------

# AIR OPERATIONS SUMMARY

PREPARED BY: J. Nettles

PREPARED DATE/TIME: 06/06/18 1300

1. INCIDENT NAME: Airline	2. OPERATIONAL PERIOD DATE: 6/7/18    START TIME: 0800    END TIME: 1954    SUNRISE: 0546    SUNSET: 2024
3. REMARKS (Safety Notes, Hazards, Air Operations Special Equipment, etc.):  *Two separate fires being run under one Air Attack (Airline Branch & Eastern Branch) Large Tower in burn on Airline Branch	4. MEDEVAC A/C: CAL FIRE Helicopter 406
5. TFR: Radius: <u>  7  </u> NM Altitude: <u>  6000  </u> = MSL Centerpoint: Lat: 36' 23.55 Long: 120' 56.13	

6. PERSONNEL	Phone	7. FREQUENCIES	AM	FM	8. FIXED-WING	# Avail / Type/ Make-Model / FAA N# / Base(s)
AOBD:		AIR/AIR FW:		166.6125	Airtankers	None
ATGS: Nettles/Martin(t)/Tully	831-601-2320	AIR/AIR RW:	125.125		Leadplanes	None
HLCO:		AIR/GROUND:	CDF Tac 15		Base FAX #:	
ASGS:		COMMAND:	CMD 1		ATGS Aircraft	A500/A503
HEBM:		COMMAND RPT	Rx: 103.5    Tx: 146.2		Other	
ATB MGR: Traxler		DECK FREQ:				
		TOLC FREQ:				

## 9. HELICOPTERS (Use Additional Sheets As Necessary)

FAA N#	TY	MAKE/MODEL	BASE	AVAIL	START	REMARKS	FAA N#	TY	MAKE/MODEL	BASE	AVAIL	START	REMARKS
N802PJ	1	S70	KIC	0800	TBD	Long Line Bucket							
N202WM	1	Kmax	KIC	0800	TBD	Long Line Bucket							
N795B	1	S-64	KIC	0800	TBD	Tank							
N78EC	2	Bell 212	KIC	0800	TBD	Long Line Bucket							



## ASSIGNMENT LIST (ICS 204)

<b>1. Incident Name:</b> <b style="text-align: center;">AIRLINE</b>		<b>2. Operational Period:</b> Date From: 06/07/18      Date To: 06/08/18 Time From: 0700      Time To: 0700				<b>3.</b>  Branch: <b style="text-align: center;">Airline</b>  Div/Group: <b style="text-align: center;">A/E</b>  <b style="text-align: center;">Alpha / Echo</b>		
<b>4. Operations Personnel:</b> Operations Section Chief: <b>Arron Young</b> Branch Director: <b>TBA</b> Division/Group Supervisor: <b>Kevin Dixon</b>								
<b>5. Resources Assigned:</b>		<b>** Resources Below in Bold are 12 Hour **</b>				Reporting Location, Special Equipment, Remarks, Notes, and Information Time      Location		
Resource Identifier	Leader	Personnel	Request #					
STC SCU 9160C						0700-0700	<b>ICP</b>	
STC 2030C						0700-0700	ICP	
CRW GABILAN 1						0700-0700	ICP	
CRW GABILAN 2						0700-0700	ICP	
CRW GABILAN 3						0700-0700	ICP	
CRW GABILAN 5						0700-0700	ICP	
STL LNU 9141L	Steve Millosivich					0700-0700	ICP	
DOZ TUU 4141	Dusty Peterson					0700-0700	ICP	
W/T 8141						0700-0700	ICP	
W/T*						0700-0700	ICP	
SOFR Danielson	Ryan Danielson					0700-0700	ICP	
<b>6. Work Assignments:</b> Hold and maintain current line. Mop up 300' in from control line. Complete line construction to E / L break.								
<b>7. Special Instructions:</b>								
<b>8. Communications</b> (radio and/or phone contact numbers needed for this assignment):								
Name	Ch	Function	Rx Freq	Rx Tone	Tx Freq	Tx Tone		Notes
CDF C1	1	COMMAND	151.3550	103.5	159.3000	146.2 (T5)		Tone 5
CDF T28	3	TACTICAL	151.1825	192.8 (T16)	151.1825	192.8 (T16)		DIV A / E
CALCORD	14	MEDICAL	156.0750	156.7	<del>156.0750</del> <i>156.0750</i>			<i>Jonathan M. Pangburn</i>
CDF T15	15	AIR TO GROUND	159.2700	192.8 (T16)	159.2700	192.8 (T16)		
GUARD	16	EMERGENCY	168.6250		168.6250	110.9		
<b>9. Prepared by: Name:</b> Jonathan Pangburn      Pos/Title: RESL <b>ICS 204</b> Date/Time: 6/6/2018      2300 hours      Signature: _____								

## ASSIGNMENT LIST (ICS 204)

<b>1. Incident Name:</b> <p style="text-align: center;"><b>AIRLINE</b></p>		<b>2. Operational Period:</b> Date From: 06/07/18      Date To: 06/08/18 Time From: 0700      Time To: 0700				<b>3.</b>  Branch: <b>Airline</b>  Div/Group: <b>L</b>  <b>Lima</b>	
<b>4. Operations Personnel:</b> Operations Section Chief: <b>Arron Young</b> Branch Director: <b>TBA</b> Division/Group Supervisor: <b>Mark Mancini</b>							
<b>5. Resources Assigned:</b>		** Resources Below in Bold are 12 Hour **				Reporting Location, Special Equipment, Remarks, Notes, and Information Time                                      Location	
Resource Identifier	Leader	Personnel	Request #				
STC 2001C				0700-0700	<b>ICP</b>		
CRW VENTURA 2				0700-0700	ICP		
CRW*				0700-0700	ICP		
STL*				0700-0700	ICP		
W/T POM 61				0700-0700	ICP		
<b>6. Work Assignments:</b> Hold and maintain current line. Mop up 300' in from control line. Complete line construction to E / L break.							
<b>7. Special Instructions:</b>  							
<b>8. Communications</b> (radio and/or phone contact numbers needed for this assignment):							
Name	Ch	Function	Rx Freq	Rx Tone	Tx Freq	Tx Tone	Notes
CDF C1	1	COMMAND	151.3550	103.5	159.3000	146.2 (T5)	Tone 5
CDF T29	4	TACTICAL	151.3475	192.8	151.3475	192.8	DIV L
CALCORD	14	MEDICAL	156.0750	156.7	156.0750 <i>Jonathan M. Pangburn</i>	156.7	
CDF T15	15	AIR TO GROUND	159.2700	192.8 (T16)	159.2700	192.8 (T16)	
GUARD	16	EMERGENCY	168.6250		168.6250	110.9	
<b>9. Prepared by: Name:</b> Jonathan Pangburn      Pos/Title:      RESL      Signature: _____ <div style="display: flex; justify-content: space-between;"> <span><b>ICS 204</b></span> <span>Date/Time: 6/6/2018      2300 hours</span> </div>							

## ASSIGNMENT LIST (ICS 204)

<b>1. Incident Name:</b> <b>AIRLINE</b>		<b>2. Operational Period:</b> Date From: 06/07/18      Date To: 06/08/18 Time From: 0700      Time To: 0700				<b>3.</b>  Branch: <b>Eastern</b>  Div/Group: <b>O</b>  <b>Oscar</b>	
<b>4. Operations Personnel:</b> Operations Section Chief: <b>Arron Young</b> Branch Director: <b>TBA</b> Division/Group Supervisor: <b>Rob Bebensee</b>							
<b>5. Resources Assigned:</b>		<b>** Resources Below in Bold are 12 Hour **</b>				Reporting Location, Special Equipment, Remarks, Notes, and Information Time      Location	
Resource Identifier	Leader	Personnel	Request #				
STC SHU 9243C					0700-0700	<b>ICP</b>	
STC 2140C					0700-0700	ICP	
STC 2310C					0700-0700	ICP	
STG FKU 9434G					0700-0700	ICP	
STG*					0700-0700	ICP	
STG*					0700-0700	ICP	
DOZ SLU 3441	Charlie Miller				0700-0700	ICP	
DOZ TUU 4143					0700-0700	ICP	
W/T 5542					0700-0700	ICP	
W/T*					0700-0700	ICP	
SOFR Tavalero	Scott Tavalero				0700-0700	ICP	
FEMT Williams	Kyle Williams				0700-0700	ICP	
<b>6. Work Assignments:</b> Continue line construction to O / R break. Improve direct fire line. Mop up 300' in from control line.							
<b>7. Special Instructions:</b>							
<b>8. Communications</b> (radio and/or phone contact numbers needed for this assignment):							
Name	Ch	Function	Rx Freq	Rx Tone	Tx Freq	Tx Tone	Notes
CDF C1	1	COMMAND	151.3550	103.5	159.3000	146.2 (T5)	Tone 5
CDF T26	5	TACTICAL	159.2925	192.8 (T16)	159.2925	192.8 (T16)	DIV O / Z
CALCORD	14	MEDICAL	156.0750	156.7	156.0750	156.7	<i>Jonathan M. Pangburn</i>
CDF T15	15	AIR TO GROUND	159.2700	192.8 (T16)	159.2700	192.8 (T16)	
GUARD	16	EMERGENCY	168.6250		168.6250	110.9	
<b>9. Prepared by: Name:</b>		Jonathan Pangburn		Pos/Title: RESL		Signature: _____	
<b>ICS 204</b>		Date/Time: 6/6/2018		2300 hours			

## ASSIGNMENT LIST (ICS 204)

<b>1. Incident Name:</b> <b>AIRLINE</b>		<b>2. Operational Period:</b> Date From: 06/07/18     Date To: 06/08/18 Time From: 0700     Time To: 0700				<b>3.</b>  Branch: <b>Eastern</b>  Div/Group: <b>R</b> <b>Romeo</b>		
<b>4. Operations Personnel:</b> Operations Section Chief: <b>Arron Young</b> Branch Director: <b>TBA</b> Division/Group Supervisor: <b>TBA</b>								
<b>5. Resources Assigned:</b>		<b>** Resources Below in Bold are 12 Hour **</b>				Reporting Location, Special Equipment, Remarks, Notes, and Information		
Resource Identifier	Leader	Personnel	Request #	Time	Location			
STC CZU 9171C				0700-0700	<b>ICP</b>			
STF 5001F				0700-0700	ICP			
STG 9413G				0700-0700	ICP			
STG*				0700-0700	ICP			
STL*				0700-0700	ICP			
STL*				0700-0700	ICP			
STL*				0700-0700	ICP			
W/T*				0700-0700	ICP			
W/T*				0700-0700	ICP			
SOFR Hughes	Jeff Hughes			0700-0700	ICP			
<b>6. Work Assignments:</b> Improve direct fire line. Mop up 100%. Secure slop over near R / T DIV break.								
<b>7. Special Instructions:</b>								
<b>8. Communications</b> (radio and/or phone contact numbers needed for this assignment):								
Name	Ch	Function	Rx Freq	Rx Tone	Tx Freq	Tx Tone	Notes	
CDF C1	1	COMMAND	151.3550	103.5	159.3000	146.2 (T5)	Tone 5	
CDF T27	6	TACTICAL	159.3075	192.8 (T16)	159.3075	192.8 (T16)	DIV R / T	
CALCORD	14	MEDICAL	156.0750	156.7	<del>156.0750</del>	<del>156.7</del>	<i>Jonathan M. Pangburn</i>	
CDF T15	15	AIR TO GROUND	159.2700	192.8 (T16)	159.2700	192.8 (T16)		
GUARD	16	EMERGENCY	168.6250		168.6250	110.9		
<b>9. Prepared by: Name:</b> Jonathan Pangburn     Pos/Title: RESL <b>ICS 204</b> Date/Time: 6/6/2018     2300 hours     Signature: _____								

## ASSIGNMENT LIST (ICS 204)

<b>1. Incident Name:</b> <b>AIRLINE</b>		<b>2. Operational Period:</b> Date From: 06/07/18      Date To: 06/08/18 Time From: 0700      Time To: 0700				<b>3.</b>  Branch: <b>Eastern</b>  Div/Group: <b>T</b> <b>Tango</b>	
<b>4. Operations Personnel:</b> Operations Section Chief: <b>Arron Young</b> Branch Director: <b>TBA</b> Division/Group Supervisor: <b>Vince Cole</b>							
<b>5. Resources Assigned:</b>		<b>** Resources Below in Bold are 12 Hour **</b>				Reporting Location, Special Equipment, Remarks, Notes, and Information Time      Location	
Resource Identifier	Leader	Personnel	Request #				
STC BEU 9460C					0700-0700	<b>ICP</b>	
STC 2391C	Jason Boaz				0700-0700	ICP	
STC 2870C					0700-0700	ICP	
STG SLU 9346G					0700-0700	ICP	
STG*					0700-0700	ICP	
STG*					0700-0700	ICP	
STG*					0700-0700	ICP	
CRW SBC 1					0700-0700	ICP	
DOZ SCU 1642					0700-0700	ICP	
DOZ SBC 2					0700-0700	ICP	
DOZ VNC 2					0700-0700	ICP	
DOZ*					0700-0700	ICP	
DOZ*					0700-0700	ICP	
DOZ*					0700-0700	ICP	
W/T NCD 5243					0700-0700	ICP	
W/T 5541					0700-0700	ICP	
W/T*					0700-0700	ICP	
SOFR Klusyk	Michael Klusyk				0700-0700	ICP	
<b>6. Work Assignments:</b> Improve control line and contingency line from R / T break to T / Z break. Improve direct fire line. Mop up 300' in from control line.							
<b>7. Special Instructions:</b>							
<b>8. Communications</b> (radio and/or phone contact numbers needed for this assignment):							
Name	Ch	Function	Rx Freq	Rx Tone	Tx Freq	Tx Tone	Notes
CDF C1	1	COMMAND	151.3550	103.5	159.3000	146.2 (T5)	Tone 5
CDF T27	6	TACTICAL	159.3075	192.8 (T16)	159.3075	192.8 (T16)	DIV R / T
CALCORD	14	MEDICAL	156.0750	156.7	156.0750	156.7	<i>Jonathan M. Pangburn</i>
CDF T15	15	AIR TO GROUND	159.2700	192.8 (T16)	159.2700	192.8 (T16)	
GUARD	16	EMERGENCY	168.6250		168.6250	110.9	
<b>9. Prepared by: Name:</b> Jonathan Pangburn      Pos/Title: RESL <b>ICS 204</b> Date/Time: 6/6/2018      2300 hours      Signature: _____							



# ICS 205 - INCIDENT RADIO COMMUNICATIONS PLAN

CONTROLLED UNCLASSIFIED  
INFORMATION//BASIC

<b>1. Incident Name:</b> <p style="text-align: center;">AIRLINE</p>			<b>2. Date/Time Prepared</b> Date: 06/06/2018 Time: 1830			<b>3. Operational Period:</b> Date From: 06/07/18      Date To: 06/08/18 Time From: 0700              Time To: 0700		
<b>4. Communications</b>								
Ch#	Function	Name	Assigned To	Rx Freq	Rx Tone	Tx Freq	Tx Tone	Notes
1	COMMAND	CDF C1	COMMAND	151.3550	103.5	159.3000	146.2 (T5)	Tone 5
2	COMMAND	CDF BEU East	COMMAND	151.2500	136.5 (T4)	159.4050	110.9 (T1)	Tone 1
3	TACTICAL	CDF T28	DIV A / E	151.1825	192.8 (T16)	151.1825	192.8 (T16)	DIV A / E
4	TACTICAL	CDF T29	DIV L	151.3475	192.8	151.3475	192.8	DIV L
5	TACTICAL	CDF T26	DIV O / Z	159.2925	192.8 (T16)	159.2925	192.8 (T16)	DIV O / Z
6	TACTICAL	CDF T27	DIV R / T	159.3075	192.8 (T16)	159.3075	192.8 (T16)	DIV R / T
7								
8								
9								
10								
11								
12								
13								
14	MEDICAL	CALCORD	MEDICAL	156.0750	156.7	156.0750	156.7	
15	AIR TO GROUND	CDF T15	AIR TO GROUND	159.2700	192.8 (T16)	159.2700	192.8 (T16)	
16	EMERGENCY	GUARD	EMERGENCY	168.6250		168.6250	110.9	
17								
18								
19								
20								
<b>5. Special Instructions</b>								
<b>6. Prepared by (Communications Unit Leader): Name:</b>						Signature: _____		
ICS 205 - CONTROLLED UNCLASSIFIED INFORMATION//BASIC						Date/Time: 06/06/18 1830		

## MEDICAL PLAN (ICS 206)

<b>1. Incident Name:</b>  <p style="text-align: center;"><b>AIRLINE</b></p>	<b>2. Operational Period:</b> Date From: <u>6/7/18</u> Date To: <u>6/8/18</u> Time From: <u>0700</u> Time To: <u>0700</u>
---	--

3. Medical Aid Stations:			
Name	Location	Contact Number/Freq	Paramedics
Engines	Line	See ICS-205	<input type="checkbox"/> No
Fireline EMTs	Line	See ICS-205	<input type="checkbox"/> No

4. Transportation (indicate air or ground):			
Ambulance Service	Location	Contact Number	Level of Service
AMR	King City	911	ALS

5. Hospitals:							
Hospital Name	Address,	Contact Number(s)/ Frequency	Travel Time		Trauma Center	Burn Center	Helipad
	Lat & Long		Air	Ground			
Salinas Valley Medical Center	450 E. Romie Ln, Salinas	831-757-4333	30	70	EDAT	<input type="checkbox"/> No	<input type="checkbox"/> No
Natividad Medical Center	1441 Constitution Blvd, Salinas	831-647-7611	30	70	Level 2	<input type="checkbox"/> No	<input checked="" type="checkbox"/> Yes
Santa Clara Valley Medical Center	751 S. Bascom Ave, San Jose	408-885-5000	60	120	Level 2	<input checked="" type="checkbox"/> Yes	<input checked="" type="checkbox"/> Yes
Community Regional Medical Center	2823 Fresno St, Fresno	559-459-6000	75	150	Level 1	<input checked="" type="checkbox"/> Yes	<input checked="" type="checkbox"/> Yes

### 6. Special Medical Emergency Procedures

**Line Emergency**  
 Crew Supervisor will contact Division Supervisor with patient complaint/condition and location.  
 - Division Group Supervisor Contacts:  
 1. Closest EMS resource  
 2. Communications Unit  
 - Communications Unit Contacts:  
 1. Ground or Air ambulance as requested.  
 2. Operations  
 3. Safety  
 4. Medical Unit  
 - Division Supervisor or designee will serve as point of contact and run medical emergency on assigned channel.  
 1. A pre-assigned tactical frequency (i.e. CALCORD) should be used for IWI and only for duration of the emergency.  
 - Communications Unit will clear the Command channel for emergency traffic as needed for duration of the need.

**Camp Emergency**  
 Contact Medical Unit with patient complaint/condition and location. Medical staff will respond to stabilize the patient.  
 - Medical Unit contacts  
 1. Communications  
 2. Safety  
 3. Logistics  
 4. Operations  
 5. Crew Supervisor  
 6. Comp/Claims

**Injury Reporting Procedures**

Nature of Injury: \_\_\_\_\_  
 Location of Patient: \_\_\_\_\_  
 Point of Contact: \_\_\_\_\_  
 Transportation Requested by: Air \_\_\_ Ground \_\_\_  
 Point of Pick-Up: \_\_\_\_\_  
 Lat: \_\_\_\_\_ Long: \_\_\_\_\_  
 Patient Unit ID: \_\_\_\_\_  
 Is an EMT with Patient: Yes \_\_\_ No \_\_\_  
 Age: \_\_\_\_\_ Sex: Male \_\_\_ Female \_\_\_

**All Emergencies - Secure the area and identified witnesses for later investigation. Keep accurate log of events.**

Check box if aviation assets are utilized for rescue. If assets are used, coordinate with Air Operations.

**7. Prepared by (Medical Unit Leader):** \_\_\_\_\_  
**Signature:** \_\_\_\_\_

**8. Approved by (Safety Officer):** \_\_\_\_\_  
**Signature:** \_\_\_\_\_

<b>ICS 206</b>	Date/Time: _____
----------------	------------------



## **Narrative**

Suppression Repair is conducted under the authority of sections 4675 and 4676 of the Public Resources Code. Suppression Rehabilitation is the necessary and reasonable repairs made and actions taken to minimize the effects of fire suppression activities on state and private property, soil, watercourses, cultural resources, wildlife and fish habitat. The following specifications shall be used in the repair of suppression activity associated with the Airline Incident:

### **Control Lines:**

1. Where excessive berms were formed, back blade or pull berms onto control line surface.
2. Back blade or pull organic debris onto and scatter evenly over control line surface at designated sensitive areas.
3. Construct waterbars on slopes greater than 20% slope.
  - a. Waterbars shall be constructed at 35° - 45° angle to the control line.
  - b. Waterbars shall be constructed to a depth of 6 inches below grade and 6 inches above grade.
  - c. Discharge shall be free of obstruction and where possible, shall discharge into rock, vegetation or other material that will disperse the water and reduce its energy.
  - d. Space waterbars every 75-100 feet on slopes 25 percent or less, 50 feet on slopes 26-50 percent and 30 feet on slopes greater than 50 percent.
4. On out sloped roads, remove lower berm, formed during suppression activity, to allow water to flow off the surface evenly.
5. At access points to dozer lines, scatter brush and other organic material available from suppression activity to hide the entrance and discourage use of the line.

### **Watercourse Crossings and Waterways:**

1. Remove dirt and other debris deposited in the watercourse to allow free flow of water and reduce the movement of material downstream.
2. Re-slope watercourse to original channel shape and location.
3. Notify fire suppression repair specialist of any damage to water diversion devices, such as culverts.

### **Access Roads:**

1. Re-slope all constructed access roads to as natural as shape as existed before their use on the incident.
2. Breach berms according to the spacing standards for waterbars on dozer line.

### **Areas of Special Concern:**

1. Archaeological Site:
  - a. Archaeological sites shall be evaluated for impact and need for State Archaeologist involvement. Sites shall be treated per Archaeological Certified staff or State Archaeologist.

### **General Cleanup:**

1. Collect any and all forms of trash such as plastic water bottles, cardboard, plastic flagging, foodstuffs, wrappers, blown hose and plastic bags **and PACK IT OUT or ARRANGE FOR MATERIAL TO BE FLOWN OUT.**

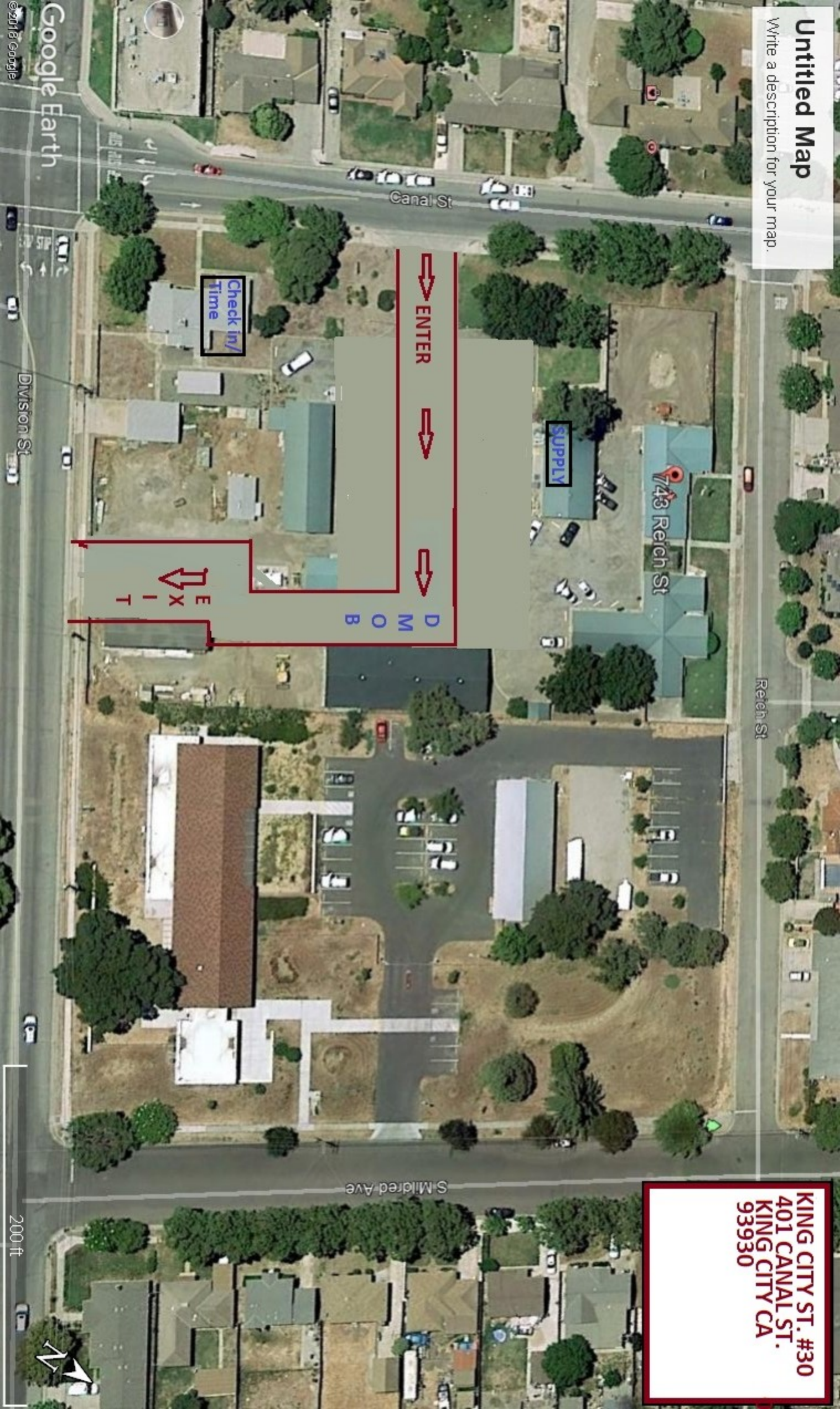
## **Archaeological and Historical Sites Fireline Guidance for the Airline Incident**

**Do not compromise safety for the protection and preservation of archaeological and historical sites. When feasible and prudent:**

1. Be on the lookout for prehistoric and historic sites. Prehistoric archaeological sites include temporary camps containing scatters of obsidian and/or chert flakes that often look like broken glass. More permanent village sites containing circular depressions (house pits), artifact scatters, and dark brown-black soils (midden). These typically occur on flats near sources of water, along ridgetops and saddles, and other such places suitable for camping. Historic sites include old wooden buildings, structures and corrals, rock foundations, wells, and debris scatters. These kinds of resources can be found in the same kinds of environmental settings as prehistoric camp sites.
2. No archaeological or historical sites have yet been flagged. If you observe artifacts, features, or sites, attempt to avoid dozing or driving through and/or parking on these sites, if feasible, especially with heavy equipment.
3. If you can't avoid sites, minimize disturbance as much as feasible, only clearing the surface to as minimal a depth and width as necessary.
4. Leave all artifacts in place. Some artifacts may have been intentionally placed for religious or ceremonial reasons.
5. When a site is discovered, flag it for visibility and report its location to the Division Supervisor. If feasible, note locations of discovered resources on a map. Better yet, take a GPS reading. Leave information with the Plans Section so that the sites can be relocated and protected during both the suppression and fire suppression repair phases of the Incident.
6. If you encounter a burial or other human remains, cease work in that area immediately and contact the CAL FIRE Archaeologist. State law requires that CAL FIRE then contact the County Coroner, who will then determine if the remains are part of a crime scene. If the Coroner determines that the remains are Native American, State law requires the Coroner to contact the Native American Heritage Commission in Sacramento.

# Untitled Map

Write a description for your map.



Google Earth

© 2018 Google

Canal St

Division St

SUPPLY

743 Reich St

Reich St

ENTER

D M O B

EXIT

Check in/  
Time

S Mildred Ave

**KING CITY ST. #30  
401 CANAL ST.  
KING CITY CA  
93930**

200 ft



**THIS PAGE  
INTENTIONALLY  
LEFT BLANK**



**UNIT LOG CONT. (ICS 214)**

1. Incident Name:

**AIRLINE**

2. Operational Period:

Date From: 6/7/18

Date To: 6/8/18

Time From: 0700

Time To: 0700

**6. Activity Log**

TIME

MAJOR EVENTS

7. Prepared By:

Date/Time: