

119°38.5'W

119°38'W

119°37.5'W

119°37'W

34°28'N

34°27.5'N

34°27'N

34°26.5'N

34°26'N

34°28'N

34°27.5'N

34°27'N

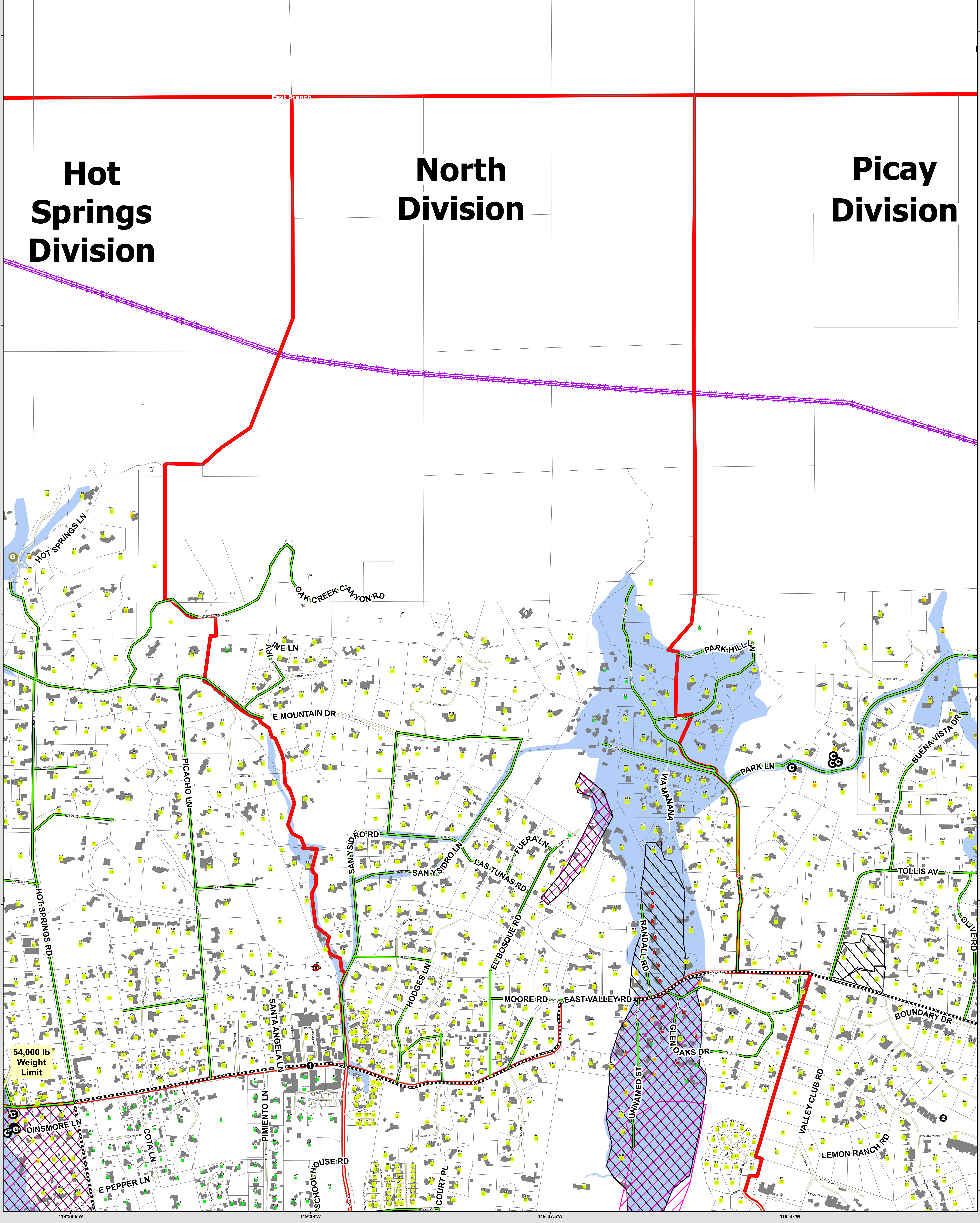
34°26.5'N

34°26'N

Hot Springs Division

North Division

Picay Division

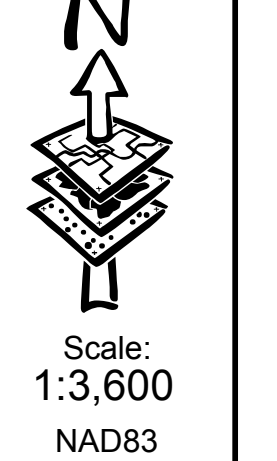


- Fire Station Locations
 - ▬ Live Dig Search
 - ▬ Customer Dig Search
 - Drop Point
- Transportation Routes**
- ▬ Clear to Drive
 - ▬ Lowboy
 - ▬ Reserved
- Debris**
- I** Bridge
 - C** Car
 - G** Gas
 - M** Mud
 - D** Debris
 - R** Road
- Structure Search Results**
- No Search
 - Primary Complete
 - No Access, Primary Complete
 - Damaged, Primary Complete
 - Destroyed, Primary Complete
 - Secondary Complete
 - No Access, Secondary Complete
 - Damaged, Secondary Complete
 - Destroyed, Secondary Complete
- Other Symbols**
- ▬ County Boundary
 - ▬ Assessor Parcels
 - ▬ Protective Action Zones
 - ▬ Fire Protection District
 - ▬ Power Transmission Lines
 - ▬ Pipelines
 - ▬ Debrisfield

OPERATIONS MAP North

2018 XSB January Storms

CA-MTO-18-000071



2018 XSB
January Storm
CA-MTO-18-000071
OPS MAP
North
Jan 16 2018