

119°37.5'W

119°37'W

119°36.5'W

119°36'W

34°27'N

34°27'N

34°26'N

34°26'N

34°25'N

34°25'N

34°25'N

34°25'N

34°25'N

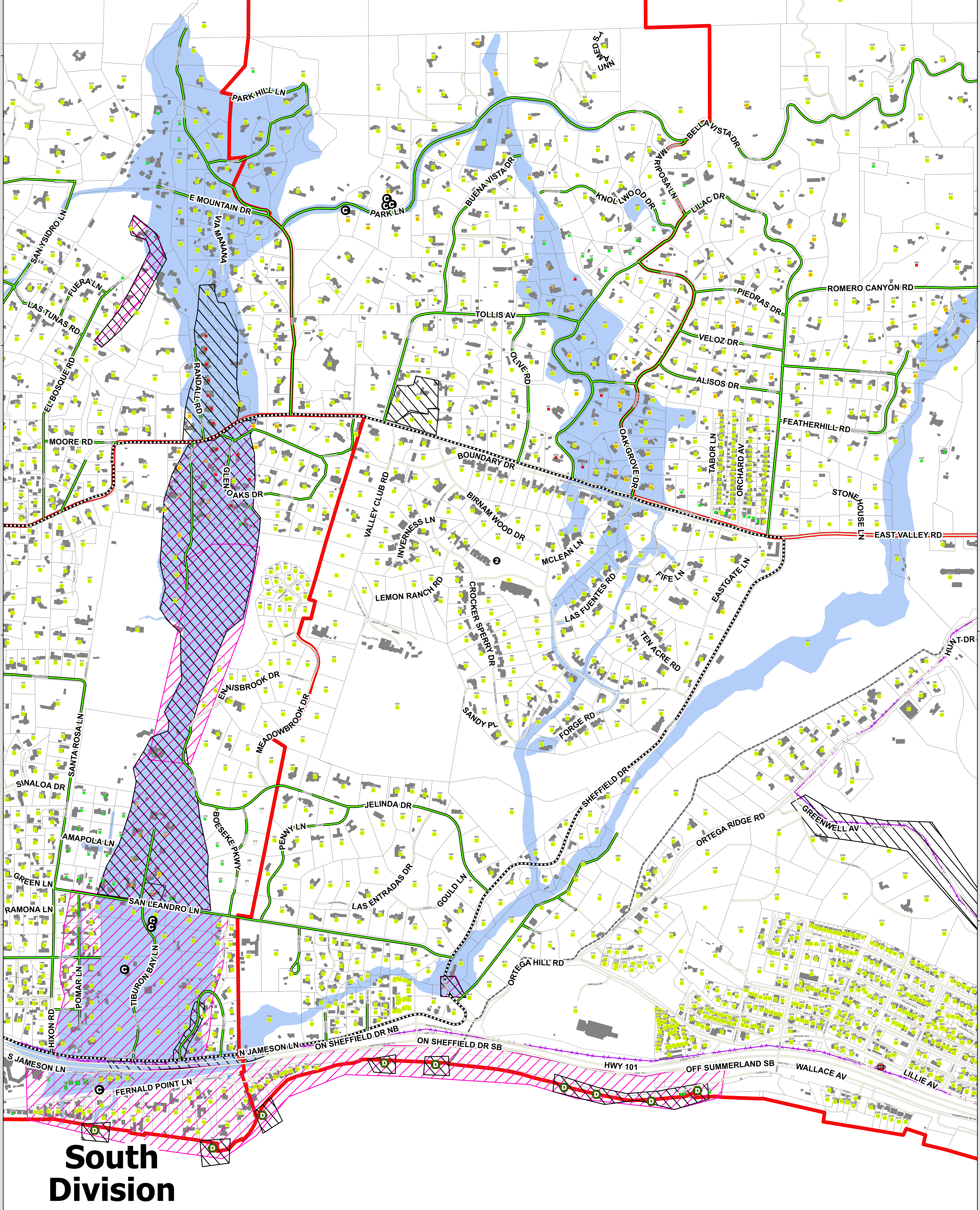
34°25'N

119°37.5'W

119°37'W

119°36.5'W

119°36'W

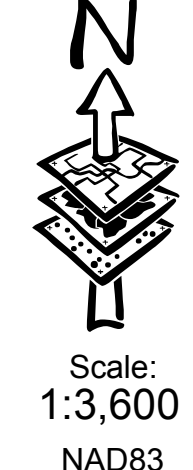


# South Division



- Fire Station Locations
- Transportation Routes
- Clear to Drive
- Lowboy
- Customer Drop Search
- Reserve
- Live Drop Search
- Drop Point
- No Search
- Primary Complete
- No Access, Primary Complete
- Damaged, Primary Complete
- Destroyed, Primary Complete
- No Access, Secondary Complete
- Damaged, Secondary Complete
- Destroyed, Secondary Complete
- County Boundary
- Assessor Parcels
- Protective Action Zones
- Fire Protection District
- Power Transmission Lines
- Pipelines
- Debris Field
- Road

## OPERATIONS MAP Picay West 2018 XSB January Storms CA-MTO-18-000071



2018 XSB  
January Storm  
CA-MTO-18-000071  
**OPS MAP**  
Picay West  
Jan 16 2018