

119°29'W

119°28.5'W

119°28'W

119°27.5'W

34°25'N

34°25'N

34°24.5'N

34°24.5'N

34°23.5'N

34°23.5'N

34°23'N

34°23'N

34°22.5'N

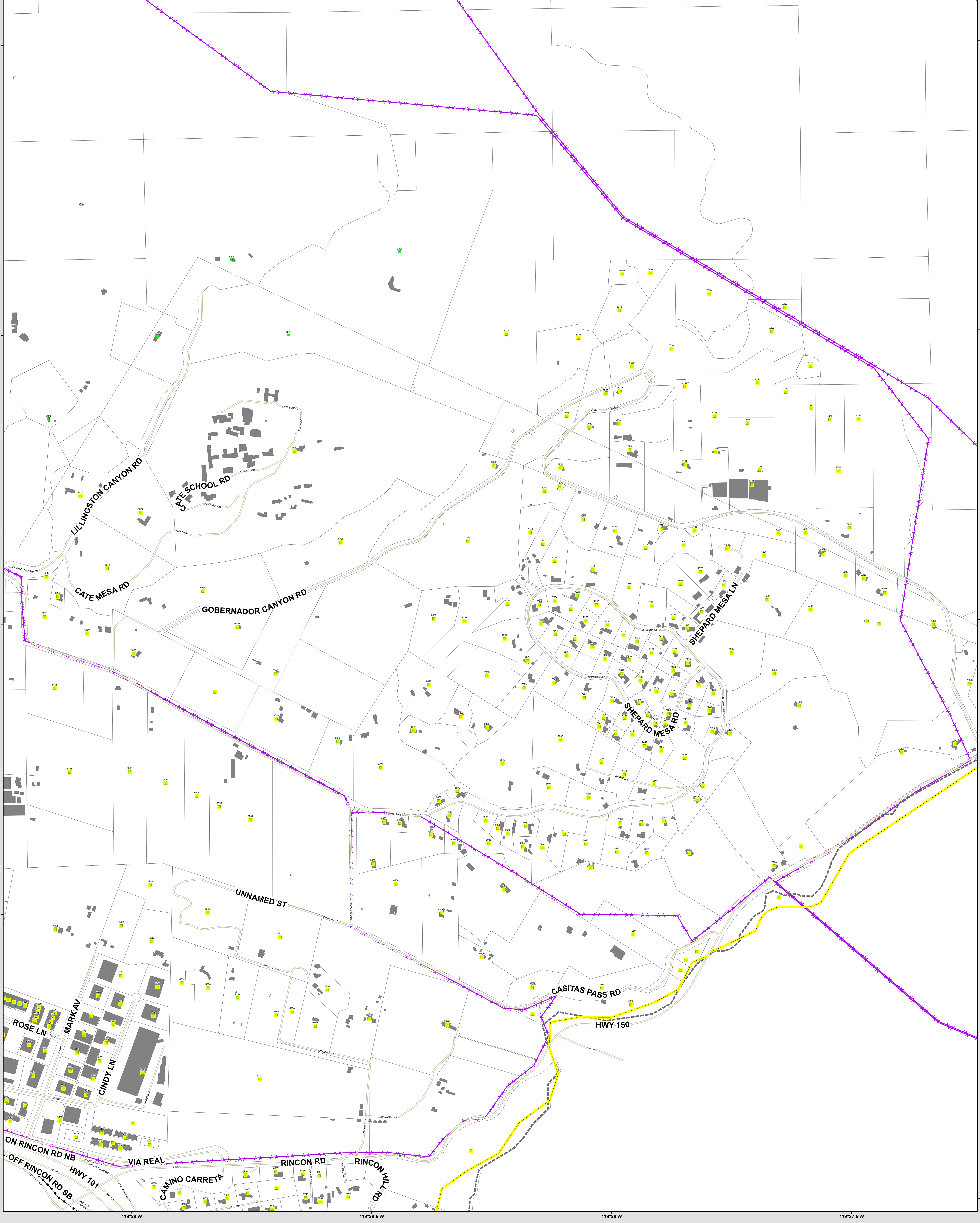
34°22.5'N

119°29'W

119°28.5'W

119°28'W

119°27.5'W



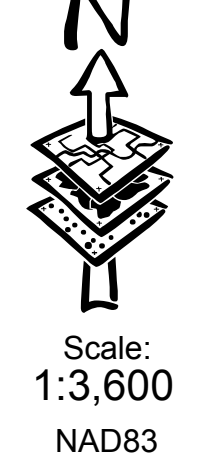
- Live Dig Search
- Structure Search Results
- Transportation Routes
- County Boundary
- Repopulation Areas
- Assessor Parcels
- Fire Protection District
- Power Transmission Lines
- Pipelines
- Debris
- Bridge
- Clear to Drive
- Lowway
- Reservoir
- No Search
- Primary Complete
- No Access, Primary Complete
- Destroyed, Primary Complete
- Secondary Complete
- No Access, Secondary Complete
- Destroyed, Secondary Complete
- Clear to Drive
- Lowway
- Reservoir
- 1, yes; 2, yes; 3, yes; 4, yes; 5, yes; 6, yes
- 10, yes; 11, yes; 7, yes; 8, yes; 9, yes
- 12, yes
- Power Transmission Lines
- Pipelines
- Debris

OPERATIONS MAP

Shepard Mesa

2018 XSB January Storms

CA-MTO-18-000071



2018 XSB
January Storms
CA-MTO-000071
OPS MAP
Shepard Mesa
Jan 18 2018