

# IAP MAP

2018 XSB January Storms  
CA-MTO-000071  
Jan. 20, 2018



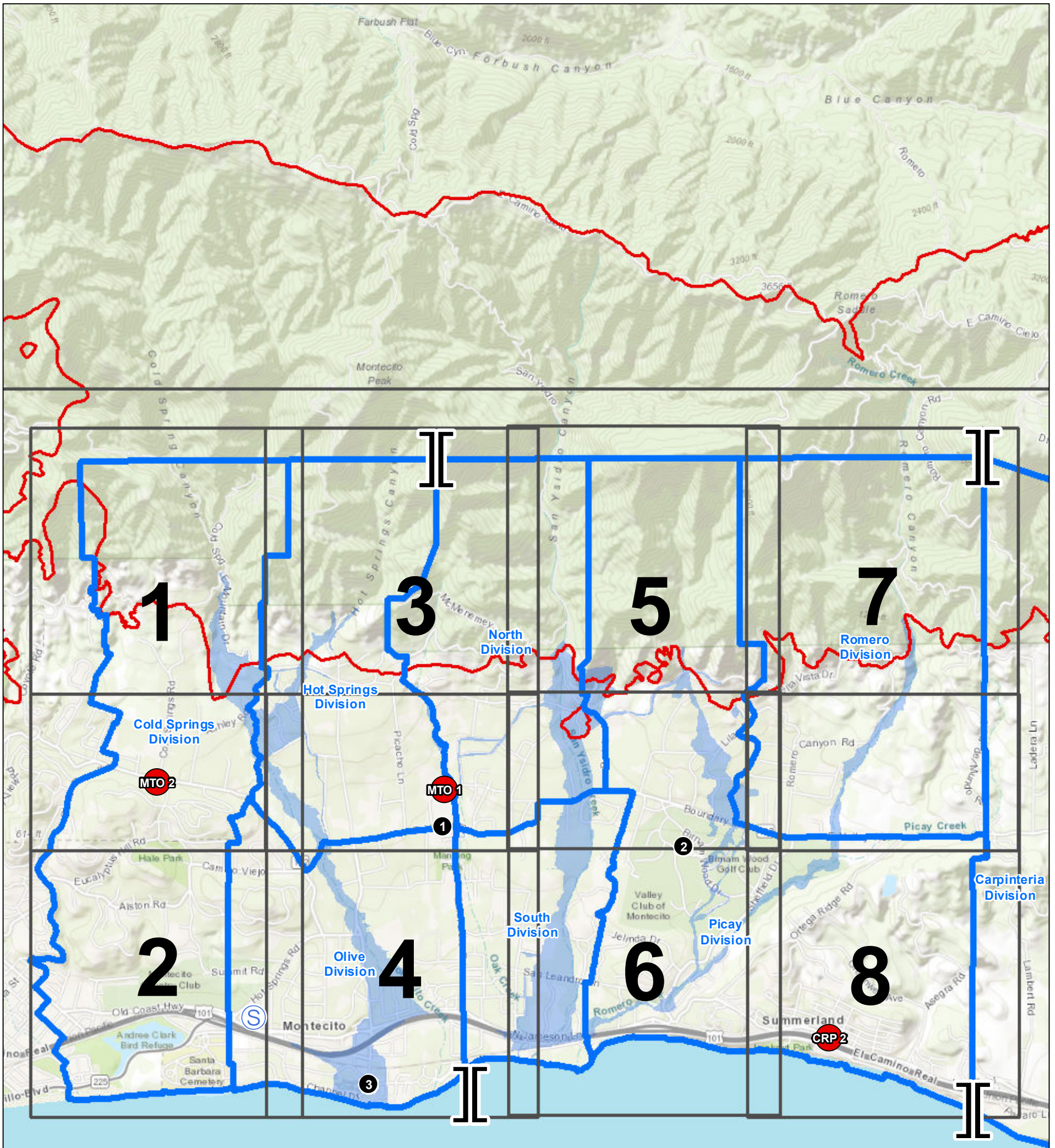
1:35,000

1	3	5	7
2	4	6	8

2500000 Feet  
|||



See Last Page for Legend



# IAP MAP

2018 XSB January Storms  
CA-MTO-000071  
Jan. 20, 2018



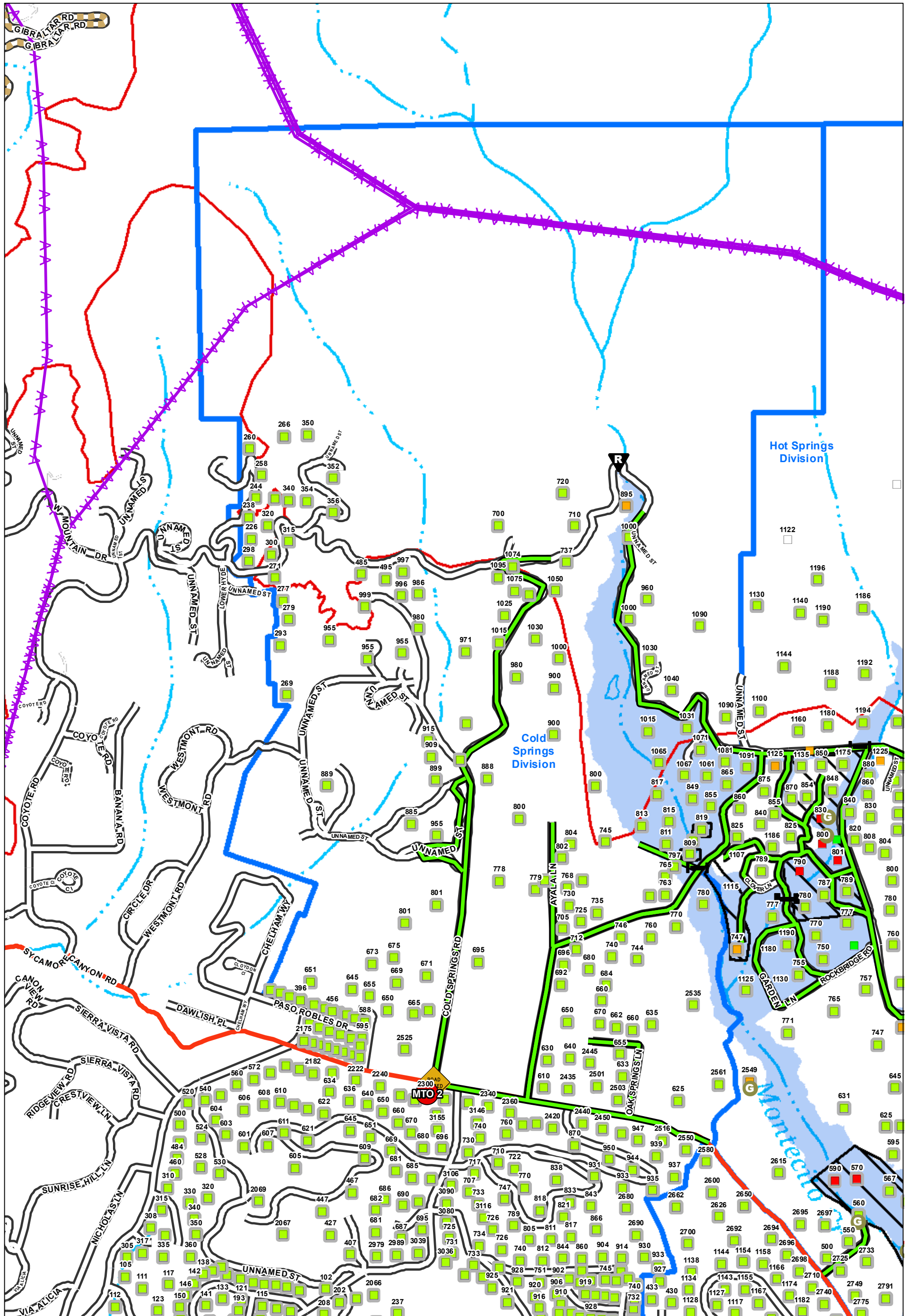
1:10,000

1	3	5	7
2	4	6	8

0 250 500 1,000 Feet



See Last Page for Legend



# IAP MAP

2018 XSB January Storms  
CA-MTO-000071  
Jan. 20, 2018

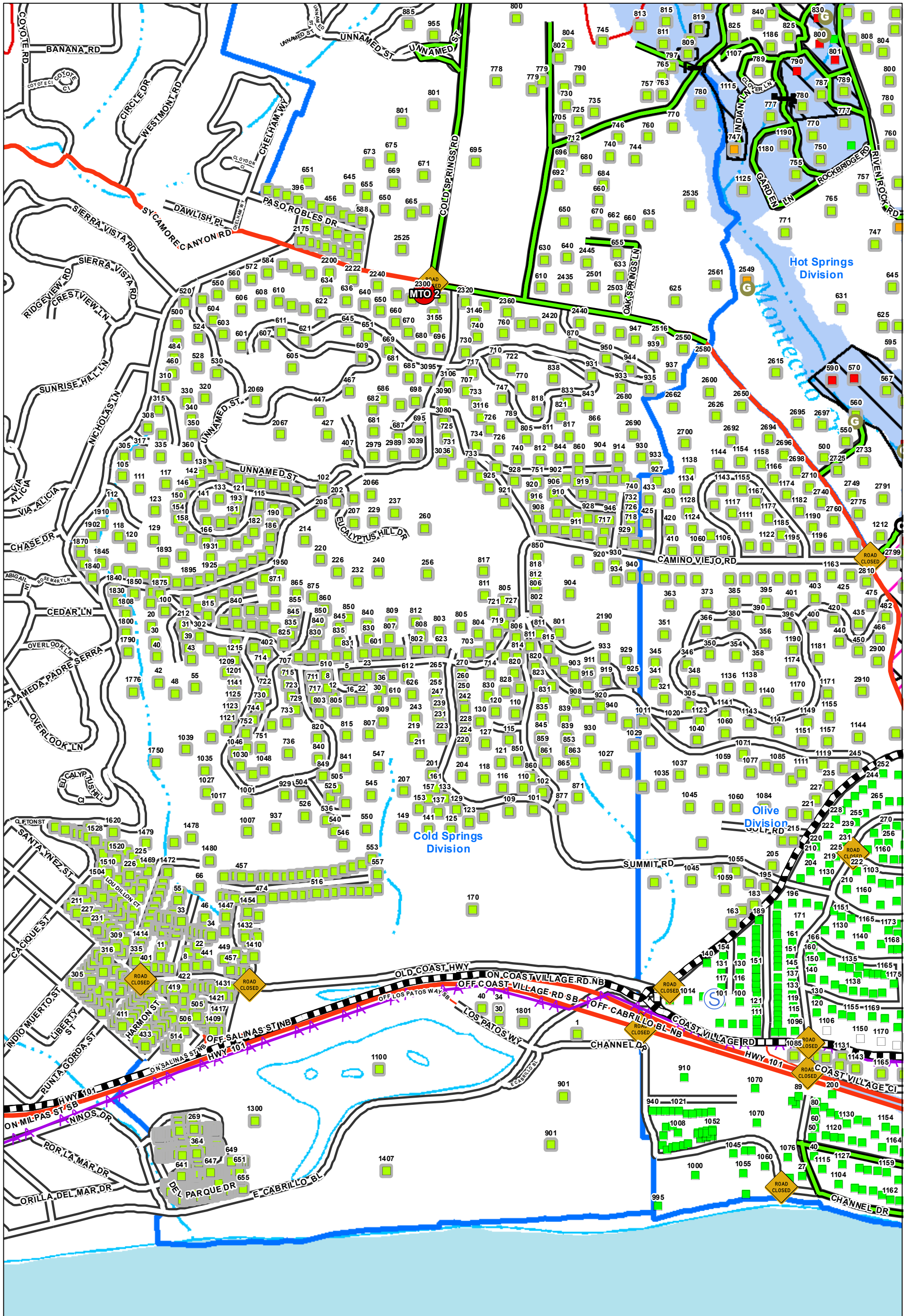


1:10,000

1	3	5	7
2	4	6	8

0 250 500 1,000 Feet

See Last Page for Legend



# IAP MAP

2018 XSB January Storms  
CA-MTO-000071  
Jan. 20, 2018



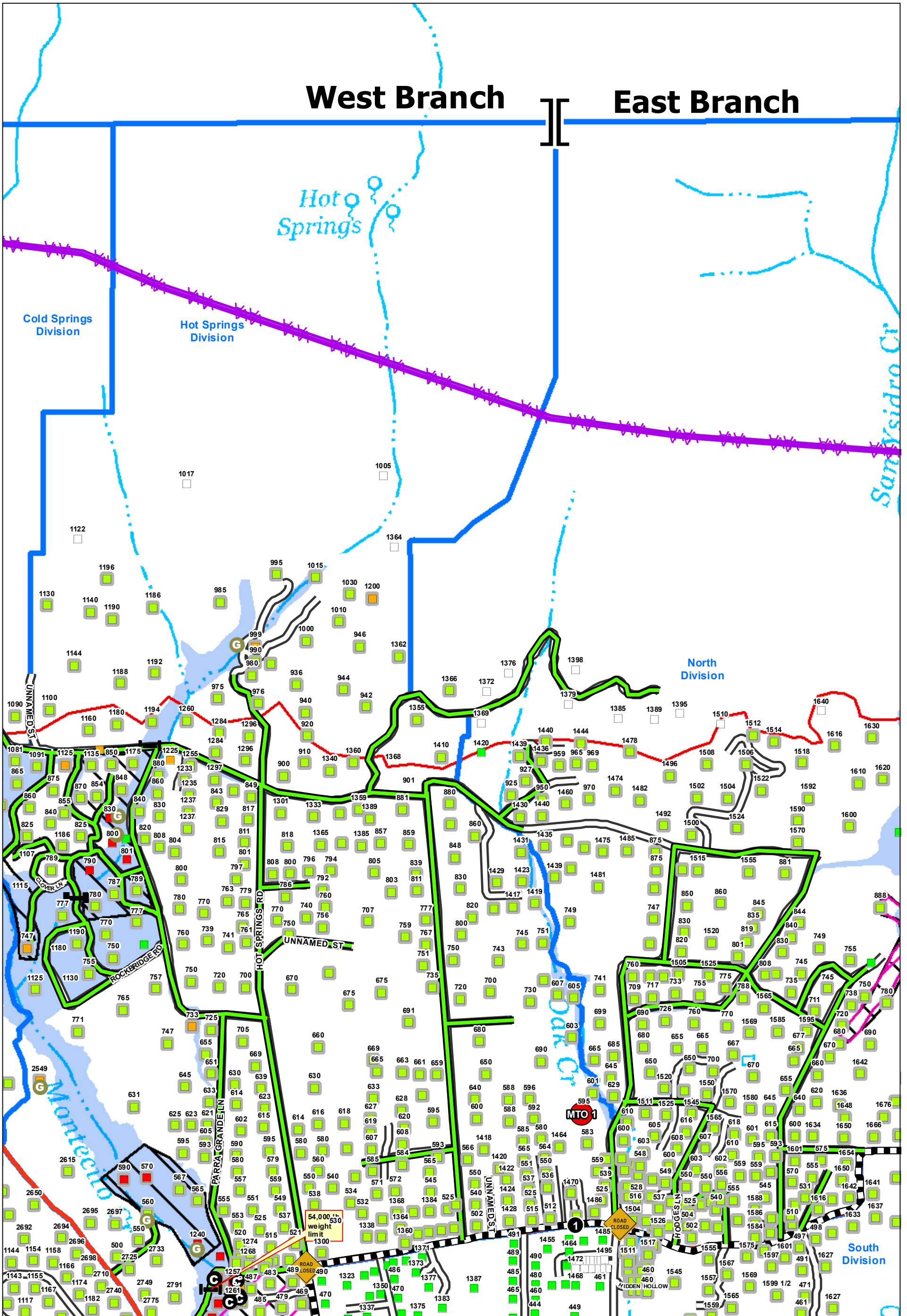
1:10,000

1	3	5	7
2	4	6	8

0 250 500 1,000 Feet



See Last Page for Legend



# IAP MAP

2018 XSB January Storms  
CA-MTO-000071  
Jan. 20, 2018

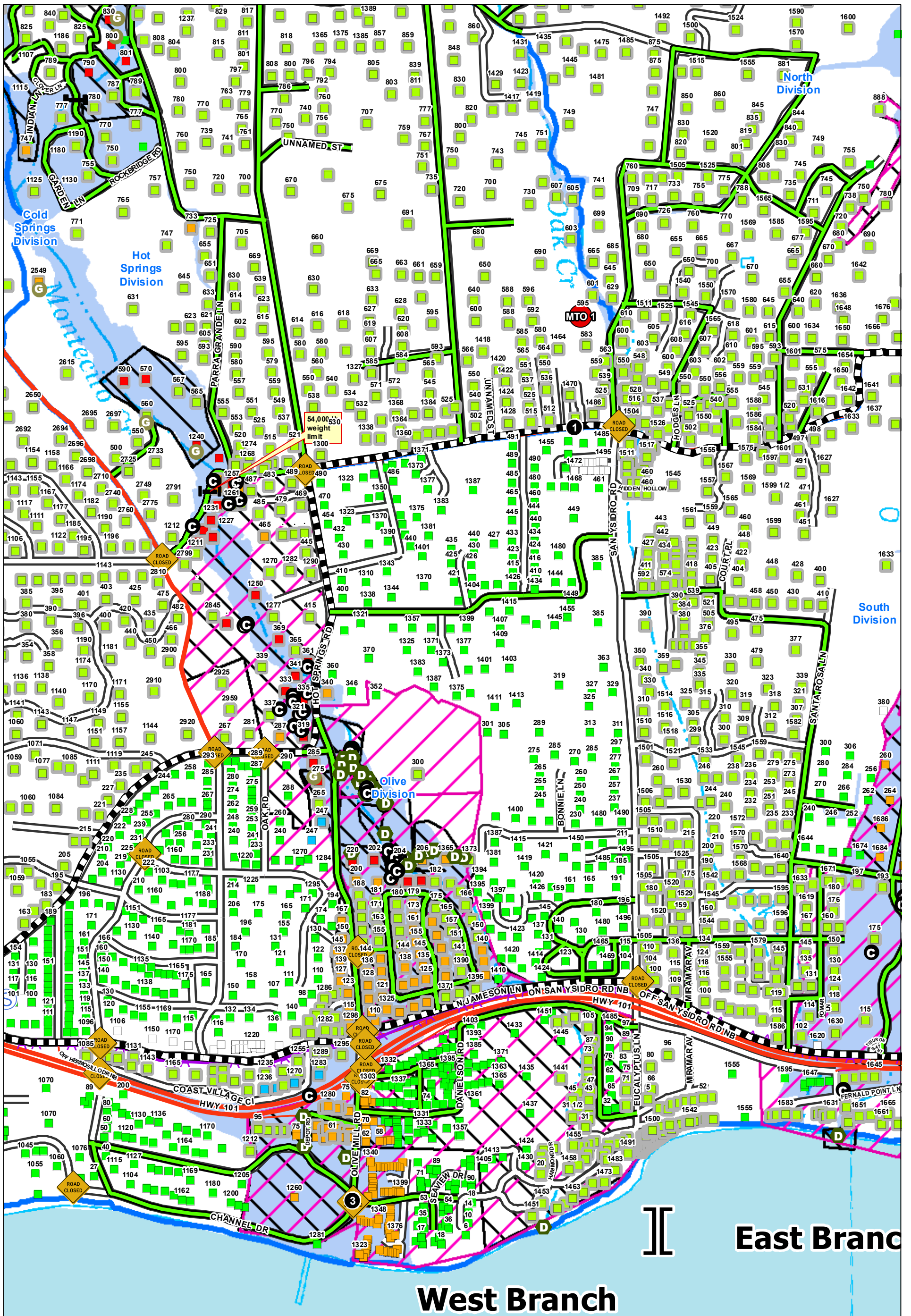


1:10,000

1	3	5	7
2	4	6	8

0 250 500 1,000 Feet

See Last Page for Legend



# IAP MAP

2018 XSB January Storms  
CA-MTO-000071  
Jan. 20, 2018

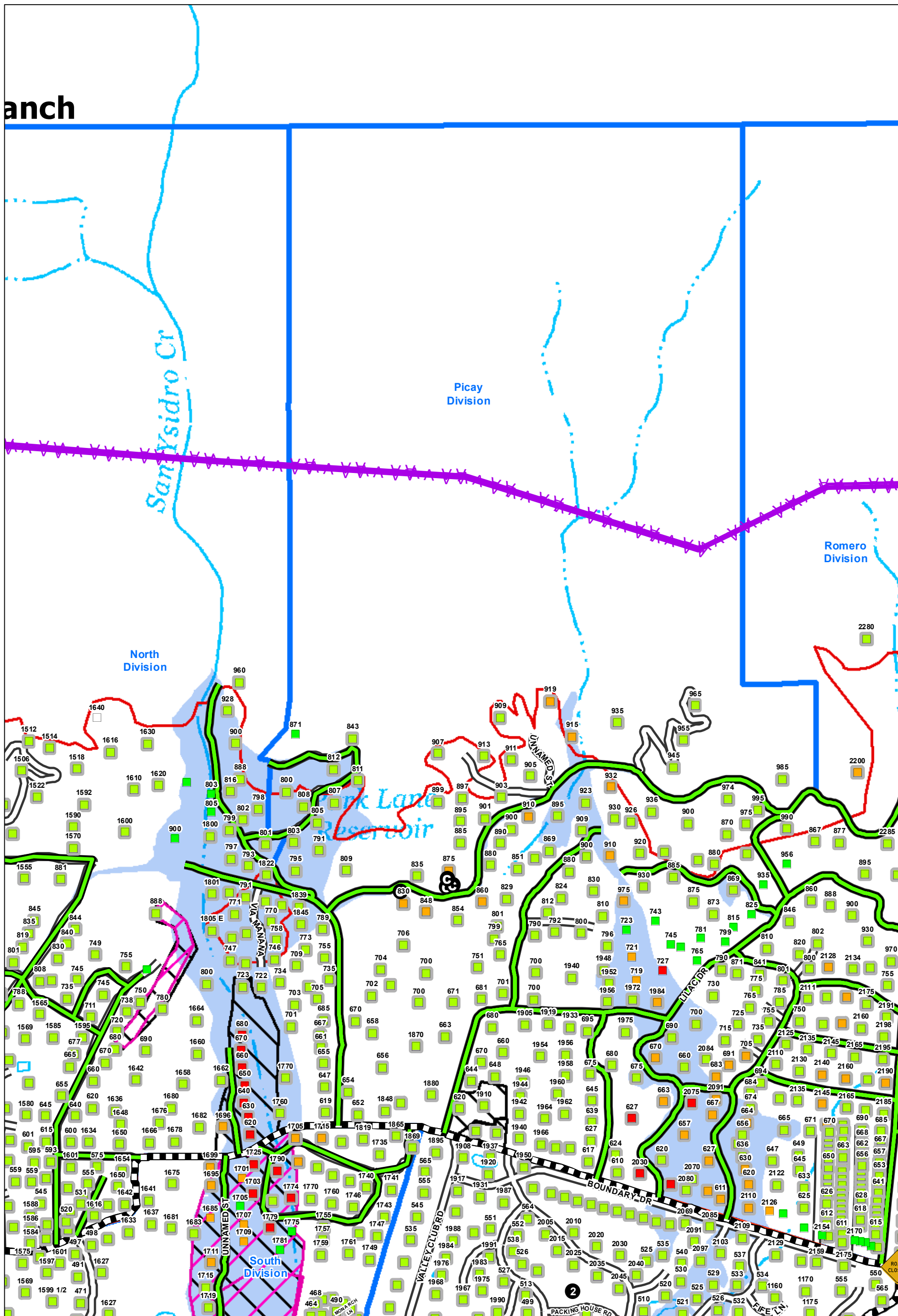


1:10,000

1	3	5	7
2	4	6	8

0 250 500 1,000 Feet

See Last Page for Legend



# IAP MAP

2018 XSB January Storms  
CA-MTO-000071  
Jan. 20, 2018



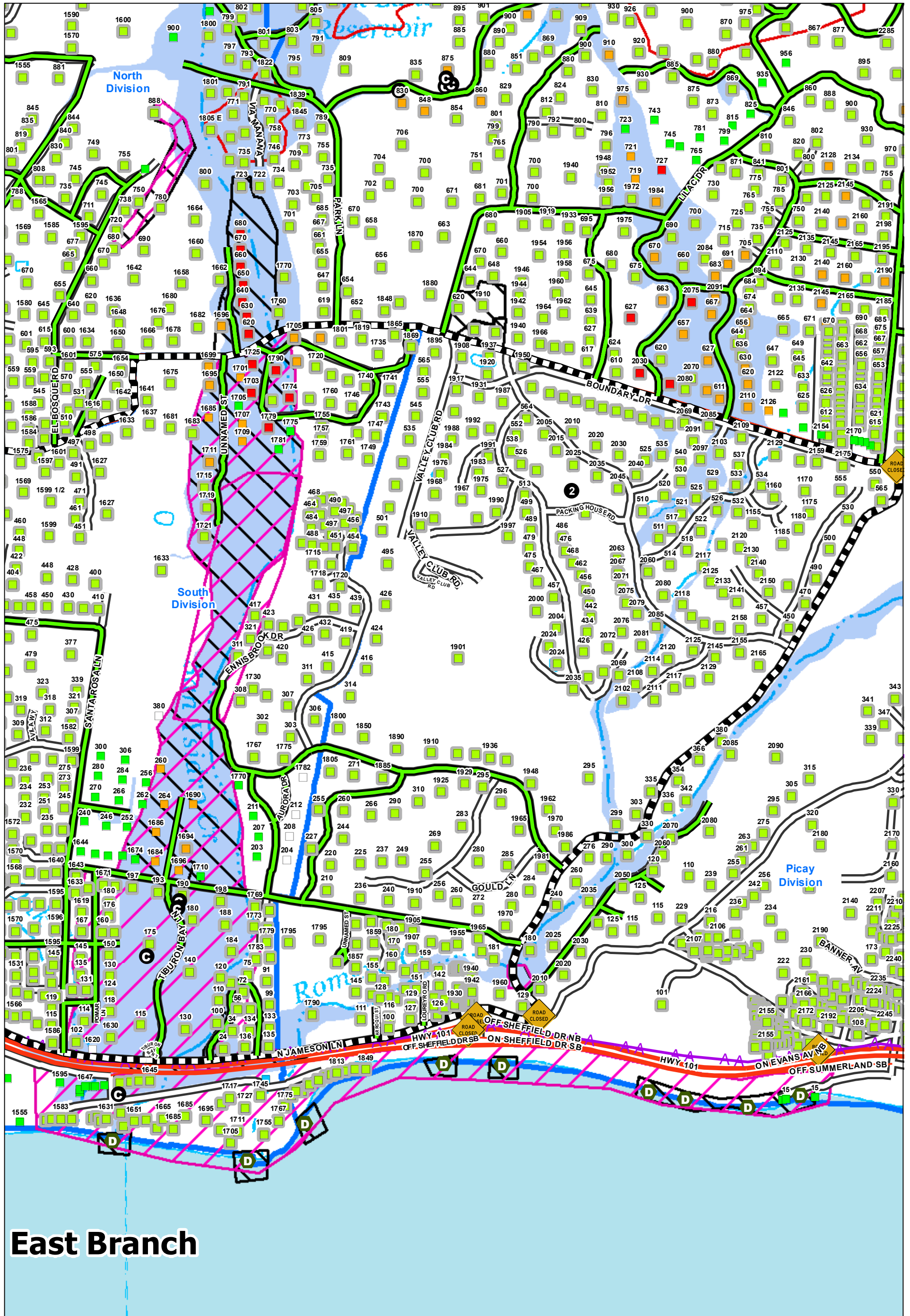
1:10,000

1	3	5	7
2	4	6	8

0 250 500 1,000 Feet



See Last Page for Legend



East Branch

# IAP MAP

2018 XSB January Storms  
CA-MTO-000071  
Jan. 20, 2018



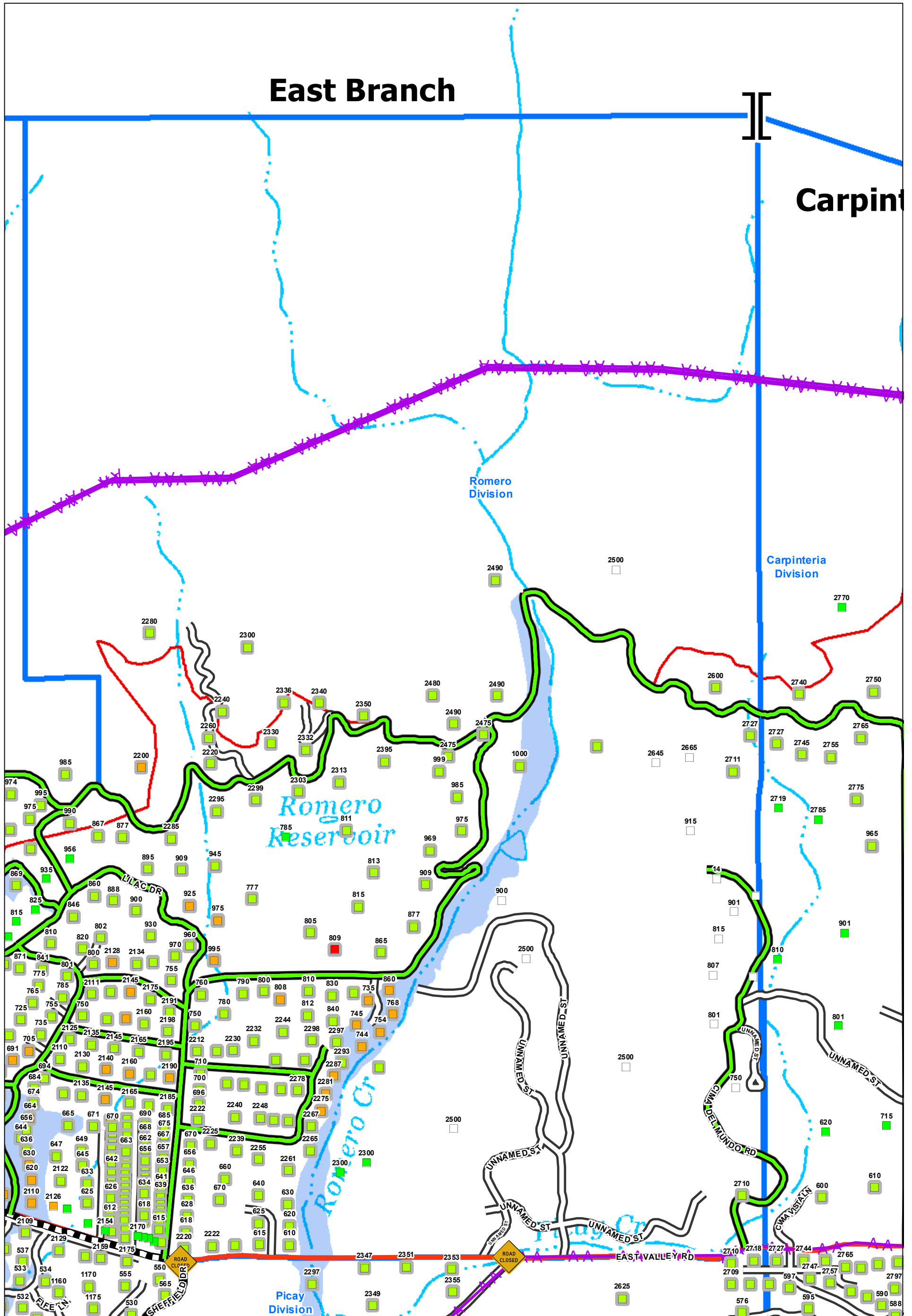
1:10,000

1	3	5	7
2	4	6	8

0 250 500 1,000 Feet



See Last Page for Legend





# IAP MAP

2018 XSB January Storms  
CA-MTO-000071  
Jan. 20, 2018



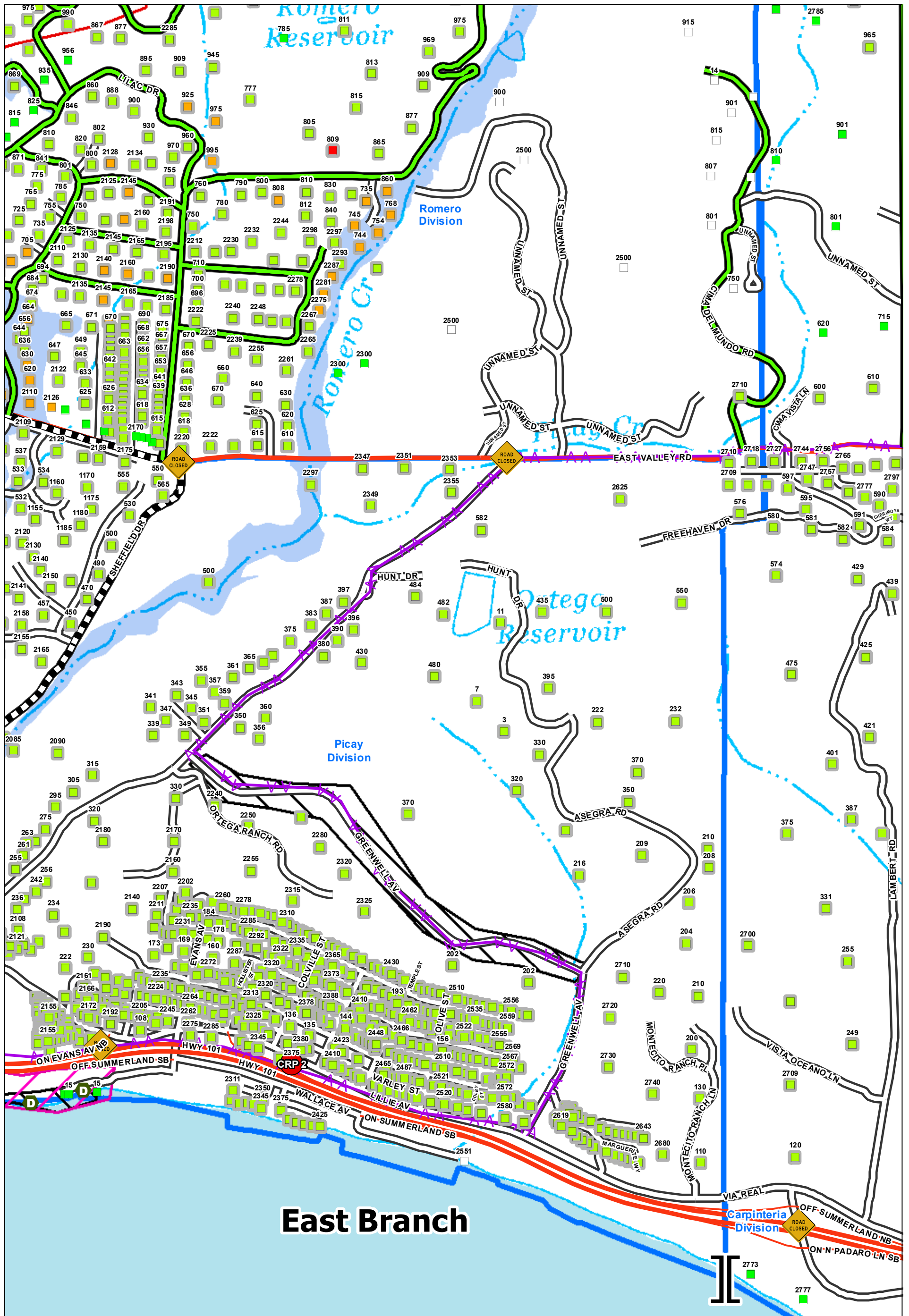
1:10,000

1	3	5	7
2	4	6	8

0 250 500 1,000 Feet






















See Last Page for Legend



**East Branch**

## Legend

-  Bridge
-  Car
-  Gas
-  Mud
-  Debris
-  Road
-  Branch Break
-  Drop Point
-  Staging Area
-  Road Closures
-  No Search
-  Primary Complete
-  No Access, Primary Complete
-  Damaged, Primary Complete
-  Destroyed, Primary Complete
-  Secondary Complete
-  No Access, Secondary Complete
-  Damaged, Secondary Complete
-  Destroyed, Secondary Complete

## Transportation Routes

-  Lowboy
-  Clear to Drive
-  Reservoir
-  Pipelines
-  Power Transmission Lines
-  Live Dog
-  Cadaver Dog
-  Division Areas
-  Debris Field

### Fire Stations in or near Operational Area:

- Montecito Station #1 (MTO 1)  
595 San Ysidro Road, Montecito
- Montecito Station #2 (MTO 2)  
2300 Sycamore Canyon Road, Montecito
- Carpinteria-Summerland Station #1 (CRP 1)  
911 Walnut Ave, Carpinteria
- Carpinteria-Summerland Station #2 (CRP 2)  
2375 Lillie Avenue, Summerland
- Santa Barbara City Station #2 (STB 2)  
819 Cacique Street, Santa Barbara