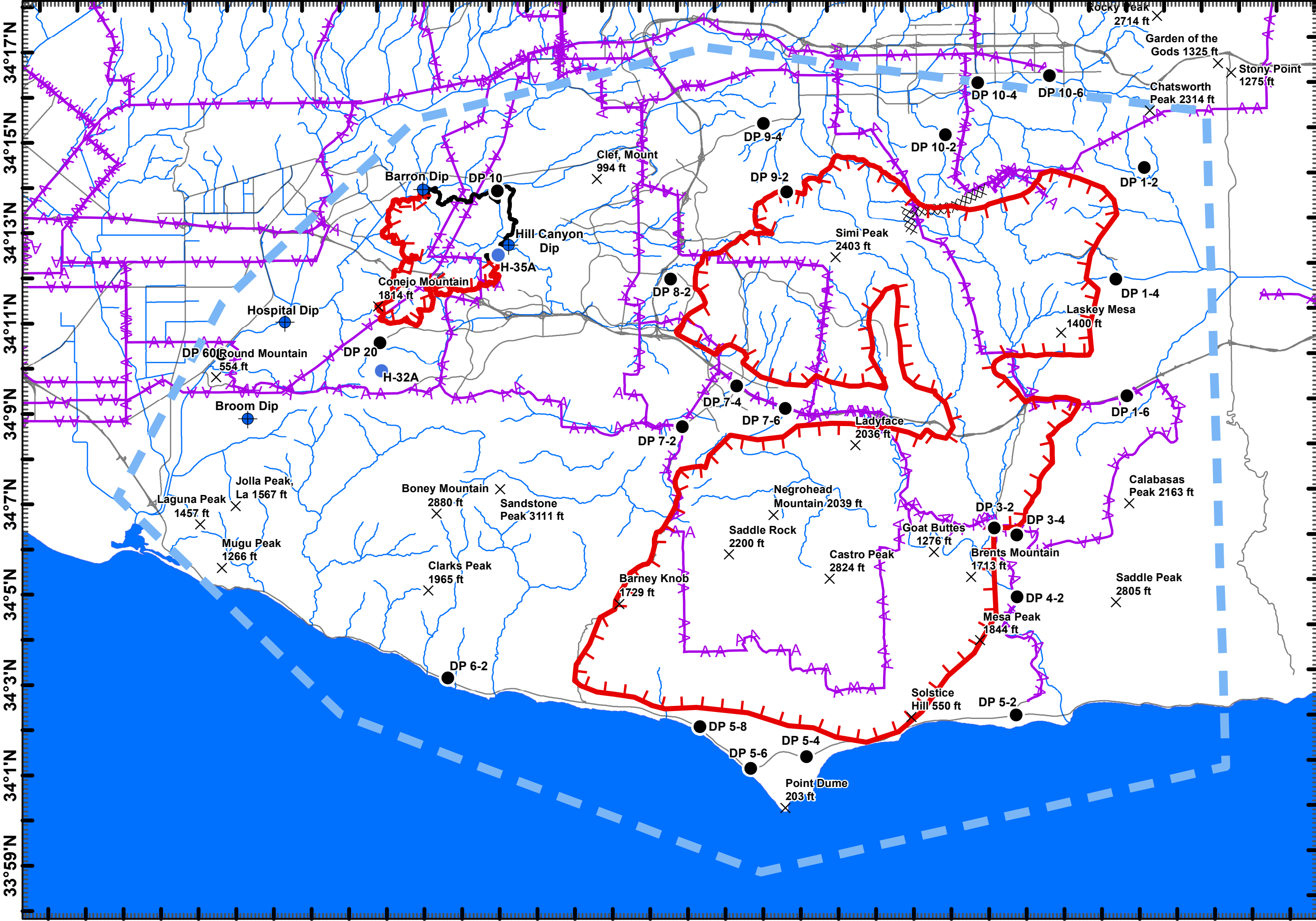


119°8'W 119°5'W 119°3'W 119°1'W 118°58'W 118°55'W 118°52'W 118°49'W 118°46'W 118°43'W 118°40'W 118°37'W 118°34'W



**AIR OPERATIONS**  
*Hill Incident*  
CA-VNC-090993  
November 10, 2018

- Legend**
- X Summits
  - Drop Point
  - ▭ Uncontrolled Fire Edge
  - ▩ Completed Dozer Line
  - Dip Site
  - Drop Point
  - Helispot
  - ▭ Uncontrolled Fire Edge
  - ▬ Completed Line
  - ▭ Temporary Flight Restriction
  - ▭ Transmission Lines
  - Streets
  - Streams



1:145,000



DISCLAIMER:  
The displayed incident data is approximate and should only be used for informational purposes. The information contained in supporting base layers was generated from GIS data maintained by different sources and agencies and is not necessarily accurate to mapping, surveying, or engineering standards.

33°59'N 34°1'N 34°3'N 34°5'N 34°7'N 34°9'N 34°11'N 34°13'N 34°15'N 34°17'N

Type	Label	Latitude	Longitude
Dip Site	Barron Dip	34° 13.875' N	118° 57' 49.693" W
Dip Site	Broom Dip	34° 8.843' N	119° 2' 34.008" W
Dip Site	Hill Canyon Dip	34° 12.626' N	118° 55' 33.511" W
Dip Site	Hospital Dip	34° 10.977' N	119° 1' 32.936" W
Drop Point	DP 10	34° 13.823' N	118° 55' 50.710" W
Drop Point	DP 10-2	34° 14.953' N	118° 43.880' W
Drop Point	DP 10-4	34° 16.093' N	118° 42.999' W
Drop Point	DP 10-6	34° 16.228' N	118° 41.088' W
Drop Point	DP 1-2	34° 14.168' N	118° 38.595' W
Drop Point	DP 1-4	34° 11.697' N	118° 39.396' W
Drop Point	DP 1-6	34° 9.115' N	118° 39.140' W
Drop Point	DP 20	34° 10.496' N	118° 59' 1.143" W
Drop Point	DP 3-2	34° 6.232' N	118° 42.719' W
Drop Point	DP 3-4	34° 6.067' N	118° 42.125' W
Drop Point	DP 4-2	34° 4.698' N	118° 42.139' W
Drop Point	DP 5-2	34° 2.087' N	118° 42.205' W
Drop Point	DP 5-4	34° 1.222' N	118° 47.793' W
Drop Point	DP 5-6	34° 0.988' N	118° 49.282' W
Drop Point	DP 5-8	34° 1.917' N	118° 50.617' W
Drop Point	DP 60	34° 10.277' N	119° 3' 14.283" W
Drop Point	DP 6-2	34° 3.063' N	118° 57.311' W
Drop Point	DP 7-2	34° 8.564' N	118° 50.989' W
Drop Point	DP 7-4	34° 9.448' N	118° 49.536' W
Drop Point	DP 7-6	34° 8.943' N	118° 48.246' W
Drop Point	DP 8-2	34° 11.832' N	118° 51.256' W
Drop Point	DP 9-2	34° 13.736' N	118° 48.135' W
Drop Point	DP 9-4	34° 15.255' N	118° 48.735' W
Helispot	H-32A	34° 9.875' N	118° 58' 59.372" W
Helispot	H-35A	34° 12.408' N	118° 55' 50.560" W