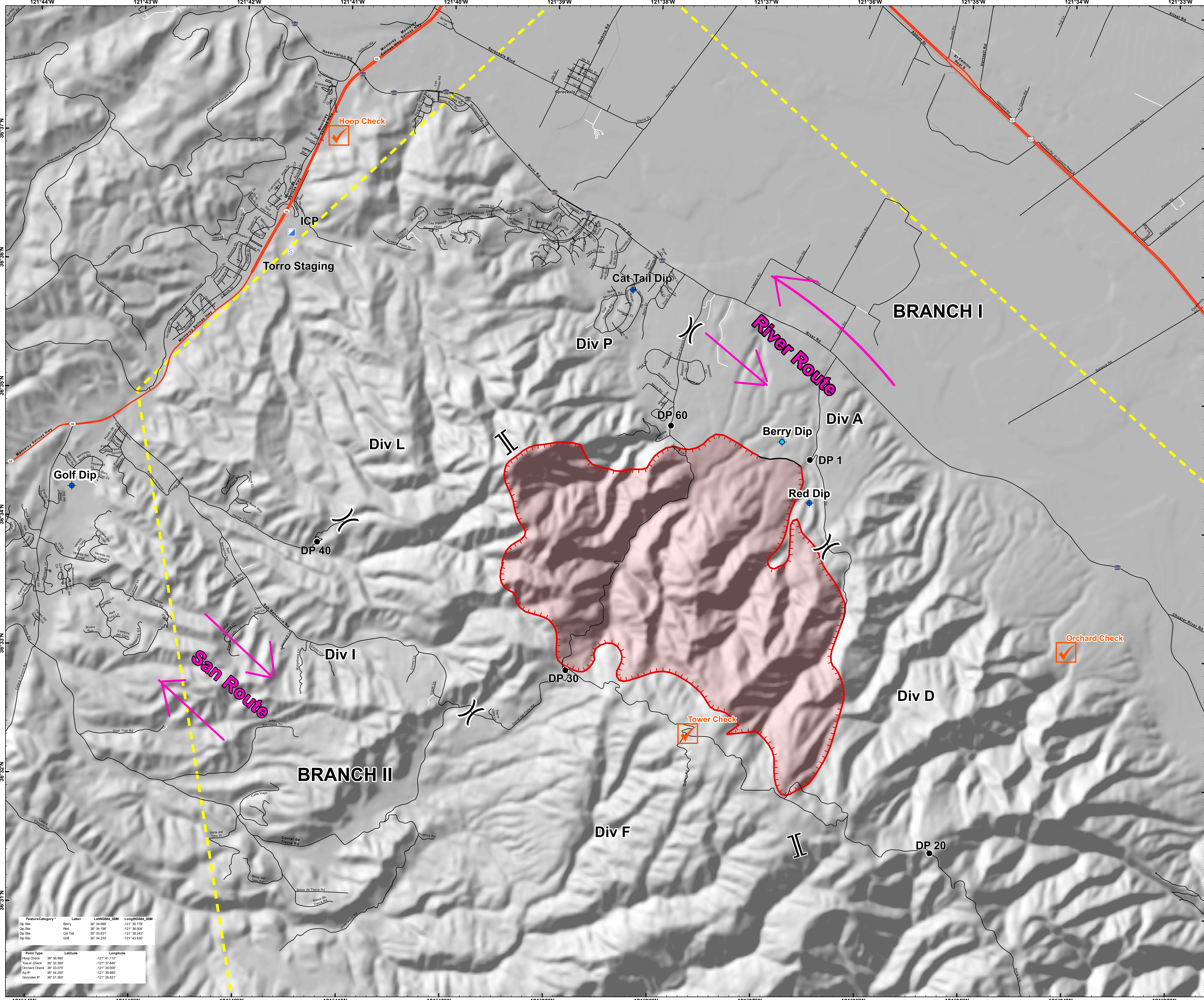




AIR OPERATIONS
River Incident
 CA-BEU-004024
 August 18, 2020



- Hoop Check
- Orchard Check
- Tower Check
- Dip Site
- Drop Point
- Incident Command Post
- Staging Area
- Division Break
- Branch Break
- Uncontrolled Fire Edge
- Contained Line
- Temporary Flight Restriction
- Wildfire Daily Fire Perimeter

Feature Category	Label	LatWGS84_DCM	LongWGS84_DCM
Dip Site	Berry	36°34.6868	-121°36.7795
Dip Site	Red	36°34.1987	-121°36.5047
Dip Site	Cat Tail	36°35.8317	-121°38.2437
Dip Site	Golf	36°34.2335	-121°43.6397

Point Type	Latitude	Longitude
Hoop Check	36°36.9907	-121°41.1107
Tower Check	36°32.3907	-121°37.6407
Orchard Check	36°33.0707	-121°34.0007
Ag P	36°44.2507	-121°39.9807
Generates P	36°31.2607	-121°28.8307

0 0.225 0.45 0.9 Miles

1:16,143

© 2020 Esri
 8/18/2020
 2:32:07 AM