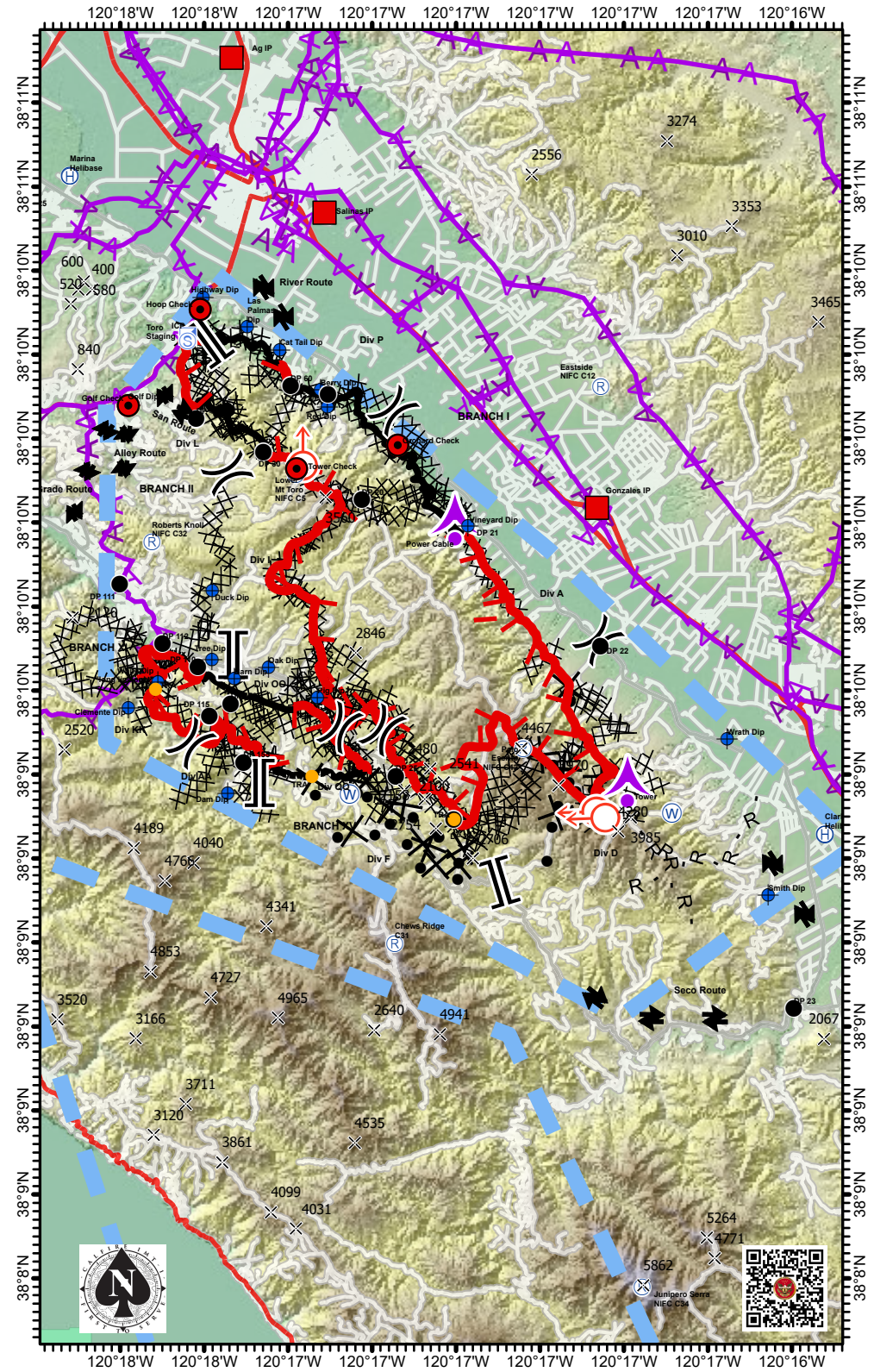


Berry Dip	+36° 34.66829214'	-121° 36.77809572'
Red Dip	+36° 34.18572138'	-121° 36.52622556'
Cat Tail Dip	+36° 35.83100004'	-121° 38.24326056'
Golf Dip	+36° 34.23312972'	-121° 43.63012998'
Las Palmas Dip	+36° 36.50157216'	-121° 39.41193018'
Vineyard Dip	+36° 30.72743106'	-121° 31.46779356'
Highway Dip	+36° 37.33357860'	-121° 41.00156892'
Clemente Dip	+36° 25.47836874'	-121° 43.69320300'
Marina Helibase	+36° 40.83740058'	-121° 45.79933830'
Clark Helibase	+36° 21.90218304'	-121° 18.68188692'
Duck Dip	+36° 28.85883966'	-121° 40.66989216'
Barn Dip	+36° 26.32318020'	-121° 39.87954426'
Oak Dip	+36° 26.64184992'	-121° 38.64826914'
Dam Dip	+36° 23.00652630'	-121° 40.11150396'
Hoop Check	+36° 36.990'	-121° 41.110'
Tower Check	+36° 32.390'	-121° 37.640'
Orchard Check	+36° 33.070'	-121° 34.000'
Golf Check	+36° 34.233'	-121° 43.630'
Ag IP	+36° 44.250'	-121° 39.980'
Gonzales IP	+36° 31.260'	-121° 26.831'
Salinas IP	+36° 39.80125514'	-121° 36.49693841'
Power Cable	+36° 30.55443918'	-121° 31.94086746'
Tower	+36° 22.96872084'	-121° 25.72904784'

Pilot Map
River Incident
CA-BEU-004024
Carmel Incident
CA-BEU-004081
August 25, 2020



Check	Spot Fire	Uncontrolled Fire Edge
IP	Staging Area	Contained Line
Flight_Routes	Water Source	Completed Dozer Line
Summits	TRA	Completed Hand Line
Aerial Hazard	Division Break	Road as Completed Line
Dip Site	Branch Break	Proposed Dozer Line
Drop Point	Aerial Hazard	
Helibase	Temporary Flight Restriction	
Incident Command Post		
Repeater		



120°18'W 120°18'W 120°17'W 120°17'W 120°17'W 120°17'W 120°17'W 120°17'W 120°16'W