

INCIDENT ACTION PLAN

RIVER - CA-BEU-004024

CARMEL - CA-BEU-004081



Friday



OPERATIONAL PERIOD


8/21/2020 0700

to

8/22/2020 0700

Briefing on CDF TAC 24

ORGANIZATION ASSIGNMENT LIST (ICS 203)

1. Incident Name: RIVER ZONE		2. Operational Period: Date From: 8/21/2020 Time From: 0700		Date To: 8/22/2020 Time To: 0700	
3. Incident Commander(s) and Command Staff:			7. Operation Section:		
IC/UC's	Nick Truax, George Huang (T)		Operations	Mike Wink	
Deputy	Greg Bertelli		Deputy Operations	Tony Brownell	
Safety Officer	Dennis Lange		Night Ops	Polo Rodriguez	
Information Officer	Emily Smith, Isaac Sanchez (T)		Staging Area		
Liaison Officer	Brandon Smith, Brandon Gunn (T)		Branch	I	Kevin Patton
4. Agency/Organization Representatives:			Division/Group	P	Chris Campagna (STA OES 2803A)
Agency/Organization	Name		Division/Group	A	Jake Pelk (STA XSM 2276A)
Monterey Regional Fire	Michael Urquides		Division/Group	D	Josh Cambell (STC FKU 9431C)
CAL OES	David Franklin		Division/Group		
Monterey Sheriff	Jason Smith		Division/Group		
CHP	Kyle Foster		Branch	II	Aaron Latta
BLM	Dave Slibsager		Division/Group	F	Ron Busch (STC XSN 2376C)
Monterey County OES	Kelsey Scanlon		Division/Group	I	Chris Jauregui (STC BEU 9460C)
Red Cross	Patsi Gasca		Division/Group	L	Preston Fouts (STC MVU 9331C)
CCC	Miguel Diaz		Division/Group		
PG&E	Geoff Money		Division/Group		
Monterey Farm Bureau	Norm Groot		Staging Area	TORO	TBD
Monterey County Parks	Micah Beardsall		Division/Group		
CA American Water	Albert Sanchez		Division/Group		
Monterey CO. SPCA	Rosanna Leighton		Division/Group		
CDCR	Micheal Nilsson		Division/Group		
			Division/Group		
			Branch	CONTINGENCY	TBD
			Division/Group		
5. Planning Section:			Division/Group		
Chief	Chris Carrera		Division/Group		
Deputy	Chris Reneau		Division/Group		
Resource Unit	Paul Carlos, BJ Corey, Jordan Weber (T)		Division/Group		
Situation Unit	Rob DeCamp, Matt Thau (T)		Branch		
Documentation Unit	Janet Arthur		Division/Group		
Demobilization Unit	Ryan Villarino		Division/Group		
GISS	Suzann Leininger, Eric Scovel (T)		Division/Group		
FBAN	Don Watt		Division/Group		
IMET	James Dudley		Division/Group		
Training Tech Spec	Dave Randolph		Air Operations Branch		Director: Matt Hill
			Air Support Group Supervisor	Thomas Smith	
			Air Tactical Group Supervisor	Tom Firth	
			Helibase Manager	Peter York	
6. Logistics Section					
Chief	Jesse Morris, Craig White				
Supply Unit	Lon Story, Mat Brabo (T)		8. Finance/Administration Section:		
Facilities Unit	Jacob Guerra, Travis Heard		Chief	Jack Franklin	
Ground Support Unit	Pete Mock, Michael Darcy		Deputy	Bob Counts	
Communications Unit	Tom Webb		Time Unit	Shannon Thompson, Al DaSilva (T)	
Medical Unit	Raice Wicklas		Procurement Unit	Tim Myer, Matt Rueckheim (T)	
Food Unit	David Jones		Comp/Claims Unit	Alyssa Hagerman	
Motel Unit	Matt Aldrich		Cost Unit	Suzi Cain	
Prepared By: Name:	Chris Reneau	Position/Title:	DPSC	Signature:	
ICS 203		Date/Time:	8/20/2020 1900		



INCIDENT Weather Forecast



FORECAST NO: 3
PREDICTION FOR: 24 Hour Shift
SHIFT DATE: 08/21/20
TIME AND DATE
FORECAST ISSUED: 2000 on 08/20/20

NAME OF FIRE: River
UNIT: Cal Fire CA-BEU
SIGNED: *Jim B. Dudley*
Jim Dudley Incident Meteorologist

WEATHER DISCUSSION: Onshore westerly flow in the lower elevations with a southwest flow aloft will continue Friday with slightly cooler temperatures and increased humidity. Smoke from nearby fires will continue to move over the incident with poor visibility at times. Morning inversions will break by late morning with moderate to good mixing in the afternoon. Additionally fog along the coast in the overnight hours and early mornings may pose issues for aviation. Over the weekend the pattern will begin to chance with the flow at ridgetops shifting to the south and then southeast as a weather system moves up the California coast from Baja. Some high clouds will arrive on Saturday with additional clouds on Sunday.

. FRIDAY . . .

Sky/weather.....Patchy smoke otherwise mostly sunny. Cooler. Becoming locally windy in the afternoon.
 Max temperature.....Highs 77-81.
 Min humidity.....15-23 percent.
 Wind (20 ft).....Downslope 2-5 mph through 0800 then becoming west 6-10 mph with gusts to 16 mph. West wind increasing to 12-17 mph with gusts to 25 mph after 1500.
 CWR.....0 percent.
 LAL.....1.
 Mixing height.....Increasing to around 6000 ft AGL.
 Transport winds.....Southwest around 12 mph.
 Marine layer.....Around 800 ft..

. FRIDAY NIGHT . . .

Sky/weather.....Patchy Smoke otherwise clear.
 Min temperature.....70-76.
 Max humidity.....30-35 percent.
 Wind (20 ft).....West to northwest 9-13 mph with gusts to 20 mph through 2000 then Becoming downslope 2-5 mph.
 CWR.....0 percent.
 LAL.....1.
 Mixing height.....Lowering to less than 500 ft AGL.
 Transport winds.....Northwest around 5 mph.
 Marine layer.....Around 800 ft.

. SATURDAY . . .

Sky/weather.....Patchy smoke otherwise mostly sunny.
 Max temperature.....Highs 79-84.
 Min humidity.....18-26 percent.
 Wind (20 ft).....Downslope 2-5 mph through 0800 then becoming west 7-12 mph with gusts to 18 mph..
 CWR.....0 percent.
 LAL.....1.
 Mixing height.....Increasing to around 5000 ft AGL.
 Transport winds.....South to southwest around 10 mph.
 Marine layer.....Less than 1000 ft.

FIRE BEHAVIOR FORECAST

FORECAST NUMBER: 5

TYPE OF FIRE: Wildfire

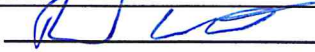
FIRE NAME: River

OPERATIONAL PERIOD: 8/21-22/20 0700-0700

DATE ISSUED: 8/20/20

TIME ISSUED: 2200

UNIT: BEU – San Benito Monterey

SIGNED: 
Typed/printed: Don Watt FBAN

INPUTS

WEATHER SUMMARY:

The weather will continue to be warm and dry through today, maximum temperatures 77-81 degrees and a minimum humidity of 15-23 percent. Minimal humidity recovery is expected overnight, 30 to 35 percent. The winds will be out of the west 12-17 mpg with gusts to 25 mph, with the strongest period in the afternoon to early evening. Overnight the winds will be terrain driven with downslope/canyon. See the weather briefing for more details.

OUTPUTS

FIRE BEHAVIOR

GENERAL:

The fire again experienced another day of shading from the smoke from the Santa Cruz fires. The shading from the smoke helps, however the fuels are at critical levels and will be receptive to embers. The fire continues to burn actively in the afternoon hours at a moderate to rapid rate of spread, depending on sheltering from the wind. The wind affects the fire differently depending on the location. The fire can build enough heat to be able to build vertical through the inversion. There is a potential for areas to reburn in the brush as the winds increase speeds.

SPECIFIC:

The northern end of the fire will experience strong west to northwest winds again this afternoon into early evening. The winds will have some variation on direction as it works around into the valley on the east. The fuels will burn at a rapid to dangerous rate during the high winds, watch for spotting down slope. The fire on the southern end of the fire continues to actively burn, and increases intensity in the late afternoon. The high winds in the valley to the east of the fire has the possibility to increase down slope winds on the east side of the predominant ridge, drawing fire downhill. As the fire continues to burn through multiple drainages watch for slope reversal, increasing speed and intensity of the fire. The fire has the potential to pass to the east of the Carmel Fire. In the afternoon if the fire builds in intensity it could start to have an influence on the Carmel Fire increasing its activity. Be aware of what the other fire is doing during the day.

AIR OPERATIONS

The mixing height above the fire may limit aircraft use over portions of the fire.

SAFETY

The River Fire and Carmel Fire are burning in close proximity to each other, make sure you are aware where the opposite fire is and burning conditions.

ASSIGNMENT LIST (ICS 204 WF)

CONTROLLED UNCLASSIFIED
INFORMATION//BASIC

1. Incident Name: RIVER ZONE	2. Operational Period: Date From: 08/21/20 Date To: 08/22/20 Time From: 0700 Time To: 0700	3. Branch Division I D Page 1 of 1 Delta
---	---	---

4. Operations Personnel:	
Operations Section Chief: Mike Wink	Night Ops: Polo Rodriguez
Branch Director: Kevin Patton	Branch Safety: Josh Zazier / Robert McClellan (T)
Division/Group Supervisor: Josh Cambell (STC FKU 9431C)	Air Attack: Tom Firth

5. Resources Assigned:		** Resources Below in Bold are 12 Hour **					
Resource Identifier	ALS	OFR	Leader	Personnel	Request #	Hours	Reporting Location
STC MVU 9332C		R	Jermey Salizzoni	17	E-27	0700-0700	River Rd/Sanchez Rd
STC FKU 9431C		R		17		0700-0700	River Rd/Sanchez Rd
STF TBD				12		0700-0700	River Rd/Sanchez Rd
STF TBD				12		0700-0700	River Rd/Sanchez Rd
STG TBD						0700-0700	River Rd/Sanchez Rd
STG TBD						0700-0700	River Rd/Sanchez Rd
STL TCU 9448L		R	Nelson, Eric	6	E-22	0700-0700	River Rd/Sanchez Rd
DOZ PVT E-32		R		2	E-32	0700-0700	River Rd/Sanchez Rd
DOZ PVT E-33		R		2	E-33	0700-0700	River Rd/Sanchez Rd
DOZ PVT E-34		R		2	E-34	0700-0700	River Rd/Sanchez Rd
DOZ PVT E-36		R	Jim Dunlap	2	E-36	0700-0700	River Rd/Sanchez Rd
DOZ PVT E-36 ASH		C	Shawn Ashbrook	2	E-36	0700-0700	River Rd/Sanchez Rd
DOZ PVT E-47		R	Travis, O'Farill	2	E-47	0700-0700	River Rd/Sanchez Rd
DOZ PVT E-63		C	Chael Dusi	2	E-63	0700-0700	River Rd/Sanchez Rd
HEQB TBD						0700-0700	River Rd/Sanchez Rd
FALM O-297		R		1	O-297	0700-1900	River Rd/Sanchez Rd
FEMP STODDARD		C	Matthew Stoddard	1	O-315	0700-0700	River Rd/Sanchez Rd
FEMT STUART		R	Craig Stuart	1	O-224	0700-0700	River Rd/Sanchez Rd

6. Work Assignments:
Mop Up 200' In from control lines.
Hold and Improve control lines.
Hold fire within established control lines.

7. Special Instructions:
Dozer access
33801 Carmel Valley Road, milepost maker 19.2, Rana Creek Ranch
Continue dozer line section 8 above Oguala Creek and continue east

8. Communications							
Name	Ch	Function	Rx Freq	Rx Tone	Tx Freq	Tx Tone	Notes
NIFC C5	1	COMMAND	169.7500N	146.2 (T5)	167.1000N	146.2 (T5)	TONE 5/LOWER TORO
CDF T31	8	TACTICAL	159.3825	192.8 (T16)	159.3825	192.8 (T16)	
CDF T19	14	AIR TO GRD	159.3600	192.8 (T16)	159.3600	192.8 (T16)	Air to Ground
CALCORD	15	MEDICAL	156.0750N	156.7 (T6)	156.0750N	156.7 (T6)	
GUARD	16	AIRGUARD	168.6250N		168.6250N	110.9 (T1)	EMERGENCY ONLY

9. Prepared by: Name:	Jordan Weber	RESL(T)	Signature:
ICS 204	Date/Time: 8/20/2020 2200	Personnel Count: 81	

ASSIGNMENT LIST (ICS 204 WF)

CONTROLLED UNCLASSIFIED
INFORMATION//BASIC

1. Incident Name: <p style="text-align: center;">RIVER ZONE</p>	2. Operational Period: Date From: 08/21/20 Date To: 08/22/20 Time From: 0700 Time To: 0700	3. Branch Division <p style="text-align: center;">II L</p> <p style="text-align: center;">Page 1 of 1 Lima</p>
--	---	---

4. Operations Personnel:	
Operations Section Chief: Mike Wink	Night Ops: Polo Rodriguez
Branch Director: Aaron Latta	Branch Safety:
Division/Group Supervisor: Preston Fouts (STC MVU 9331C)	Air Attack: Tom Firth

5. Resources Assigned:		** Resources Below in Bold are 12 Hour **					
Resource Identifier	ALS	OFR	Leader	Personnel	Request #	Hours	Reporting Location
STC XTB 4230C		R	John McClellan	21	E-30	0700-0700	Youth Camp
STC MVU 9331C		R	Preston Fouts	17	E-19	0700-0700	Youth Camp
STC TBD						0700-0700	Youth Camp
STF TBD				12		0700-0700	Youth Camp
STG TBD						0700-0700	Youth Camp
STG TBD						0700-0700	Youth Camp
CRW T2 TBD						0700-0700	Youth Camp
CRW T2 TBD						0700-0700	Youth Camp
STL TBD						0700-0700	Youth Camp
STL TBD						0700-0700	Youth Camp
STL TBD						0700-0700	Youth Camp
DOZ PVT E-52		R		2	E-52	0700-0700	Youth Camp
DOZ PVT E-171		R	Erik Roen	2	E-171	0700-0700	Youth Camp
DOZ TBD						0700-0700	Youth Camp
DOZ TBD						0700-0700	Youth Camp
WT PVT E-77		C	Steve Smith	2	E-77	0700-0700	Youth Camp
WT PVT E-140		R	Dale Evenson	1	E-140	0700-1900	Youth Camp
WT TBD						0700-0700	Youth Camp

6. Work Assignments:
 Construct control lines as direct as possible.
 Continue Burning Operations
 Prepare for firing and continue firing as needed. Protect infrastructure.

7. Special Instructions:

8. Communications							
Name	Ch	Function	Rx Freq	Rx Tone	Tx Freq	Tx Tone	Notes
NIFC C5	1	COMMAND	169.7500N	146.2 (T5)	167.1000N	146.2 (T5)	TONE 5/LOWER TORO
CDF T35	11	TACTICAL	159.3225	192.8 (T16)	159.3225	192.8 (T16)	
CDF T19	14	AIR TO GRD	159.3600	192.8 (T16)	159.3600	192.8 (T16)	Air to Ground
CALCORD	15	MEDICAL	156.0750N	156.7 (T6)	156.0750N	156.7 (T6)	
GUARD	16	AIRGUARD	168.6250N		168.6250N	110.9 (T1)	EMERGENCY ONLY

9. Prepared by: Name: Jordan Weber RESL(T)
 Signature:
ICS 204 Date/Time: 8/20/2020 2200 Personnel Count: 57

ICS 205 - INCIDENT RADIO COMMUNICATIONS PLAN

1. Incident Name:
RIVER ZONE
Incident Channels

2. Date/Time Prepared
Date: 08/20/2020
Time: 2230

3. Operational Period:
Date From: 08/21/20
Time From: 0700
Date To: 08/22/20
Time To: 0700

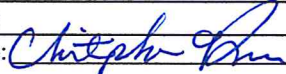
4. Communications									
Ch#	Function	Name	Assigned To	Rx Freq	Rx Tone	Tx Freq	Tx Tone	Notes	
1	COMMAND	NIFC C5	RIVER ZONE	169.7500N	146.2 (T5)	167.1000N	146.2 (T5)	TONE 5/LOWER TORO	
2	COMMAND	NIFC C12	RIVER ZONE	173.0375	146.2 (T5)	167.3250	146.2 (T5)	TONE 5/EASTSIDE	
3	COMMAND	NIFC C8	RIVER ZONE	169.5375N	146.2 (T5)	164.7125N	146.2 (T5)	TONE 5/PALO ESCRITO	
4									
5	COMMAND	NIFC C32	RIVER ZONE	171.0875	146.2 (T5)	164.0125	146.2 (T5)	TONE 5/DOWNTOWN SALINAS	
6	TACTICAL	CDF T29	DIV P	151.3475	192.8 (T16)	151.3475	192.8 (T16)		
7	TACTICAL	CDF T30	DIV A	151.3925	192.8 (T16)	151.3925	192.8 (T16)		
8	TACTICAL	CDF T31	DIV D	159.3825	192.8 (T16)	159.3825	192.8 (T16)		
9	TACTICAL	CDF T24	DIV F	151.3325	192.8 (T16)	151.3325	192.8 (T16)		
10	TACTICAL	CDF T34	DIV I	151.4675	192.8 (T16)	151.4675	192.8 (T16)		
11	TACTICAL	CDF T35	DIV L	159.3225	192.8 (T16)	159.3225	192.8 (T16)		
12	TACTICAL	CDF T36	CONTINGENCY	151.1525	192.8 (T16)	151.1525	192.8 (T16)		
13	TACTICAL	CDF T37	STRUCTURE GRP	159.3375	192.8 (T16)	159.3375	192.8 (T16)		
14	AIR TO GRD	CDF T19	ALL DIVS	159.3600	192.8 (T16)	159.3600	192.8 (T16)	Air to Ground	
15	MEDICAL	CALCORD	ALL DIVS	156.0750N	156.7 (T6)	156.0750N	156.7 (T6)		
16	AIRGUARD	GUARD	ALL DIVS	168.6250N		168.6250N	110.9 (T1)	EMERGENCY ONLY	
17									
18									
19									
20	AIRGUARD	GUARD	ALL DIVS	168.6250N		168.6250N	110.9 (T1)	EMERGENCY ONLY	

5. Special Instructions
VER 3= 8/20/2020

6. Prepared by (Communications Unit Leader): Name: CORY COSTA COML(T)
Signature: _____
Date/Time: 08/20/20 2230

CARMEL ZONE

ORGANIZATION ASSIGNMENT LIST (ICS 203)

1. Incident Name: CARMEL ZONE		2. Operational Period: Date From: 8/21/2020		Date To: 8/22/2020	
		Time From: 0700		Time To: 0700	
3. Incident Commander(s) and Command Staff:			7. Operation Section:		
IC/UC's	Nick Truax, George Huang (T)		Operations	Mike Wink	
Deputy	Greg Bertelli		Deputy Operations	Tony Brownell	
Safety Officer	Dennis Lange		Night Ops	Polo Rodriguez	
Information Officer	Emily Smith, Isaac Sanchez (T)		Staging Area		
Liaison Officer	Brandon Smith, Brandon Gunn (T)		Branch	XI	Merrick Fields
4. Agency/Organization Representatives:			Division/Group	AA	Shindler (2802A)
Agency/Organization	Name		Division/Group	KK	Nolan Hale
Monterey Regional Fire	Michael Urquides		Division/Group		
CAL OES	David Franklin		Division/Group		
Monterey CO SO	Jason Smith		Division/Group		
CHP	Kyle Foster		Branch	XV	Mike Petro (T)
Monterey County OES	Kelsey Scanlon		Division/Group	OO	Travis Thogmartin (9352C)
Red Cross	Patsi Gasca		Division/Group	QQ	Elliott Mariana
CCC	Miguel Diaz		Division/Group		
PG&E	Geoff Money		Division/Group		
Monterey Farm Bureau	Norm Groot		Division/Group		
Monterey County Parks	Micah Beardsall		Staging Area		
BLM	Dave Slibsager		Division/Group		
US Forest Service	Trenton Pins		Division/Group		
CA American Water	Albert Sanchez		Division/Group		
CDCR	Micheal Nilsson		Division/Group		
Monterey County SPCA	Rosanna Leighton		Division/Group		
			Branch		
			Division/Group		
5. Planning Section:			Division/Group		
Chief	Chris Carrera		Division/Group		
Deputy	Chris Reneau		Division/Group		
Resource Unit	Paul Carlos, BJ Corey, Jordan Weber (T)		Division/Group		
Situation Unit	Rob DeCamp, Matt Thau (T)		Branch		
Documentation Unit	Janet Arthur		Division/Group		
Demobilization Unit	Ryan Villarino		Division/Group		
GISS	Suzann Leininger, Eric Scovel (T)		Division/Group		
FBAN	Don Watt		Division/Group		
IMET	James Dudley		Division/Group		
Training Tech Spec	Dave Randolph		Air Operations Branch		Director: Matt Hill
			Air Support Group Supervisor		Thomas Smith
			Air Tactical Group Supervisor		
6. Logistics Section			Helibase Manager		Peter York
Chief	Jesse Morris, Craig White				
Supply Unit	Lon Story, Mat Brabo (T)		8. Finance/Administration Section:		
Facilities Unit	Jacob Guerra, Travis Heard		Chief	Jack Franklin	
Ground Support Unit	Pete Mock, Michael Darcy		Deputy	Bob Counts	
Communications Unit	Tom Webb		Time Unit	Shannon Thompson, Al DaSilva (T)	
Medical Unit	Raice Wicklas		Procurement Unit	Tim Myer, Matt Rueckheim (T)	
Food Unit	David Jones		Comp/Claims Unit	Alyssa Hagerman	
Accommodations			Cost Unit	Suzi Cain	
Prepared By: Name:	Chris Reneau	Position/Title:	DPSC	Signature: 	
ICS 203		Date/Time:	8/20/2020 1900		

FIRE BEHAVIOR FORECAST

FORECAST NUMBER: 3

TYPE OF FIRE: Wildfire

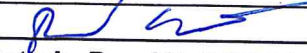
FIRE NAME: Carmel

OPERATIONAL PERIOD: 8/21-22/20 0700-0700

DATE ISSUED: 8/20/20

TIME ISSUED: 2200

UNIT: BEU – San Benito Monterey

SIGNED: 
Typed/printed: Don Watt FBAN

INPUTS

WEATHER SUMMARY:

The weather will remain warm and dry today with temperatures 77-89 degrees and relative humidity 23-28 percent. Overnight humidity should have a better recovery to 55-65 percent. Winds will be slope driven in the morning becoming west 6-10 mph with gust to 16 mph. Locally gusty wind will increase to 25 after 1500. Overnight the wind will be terrain driven with downslope/canyon. Refer to the weather forecast for more detailed information.

OUTPUTS

FIRE BEHAVIOR

GENERAL:

The fire area has been shaded by smoke at lower and higher elevations with slight lifting in the late morning and early afternoon. This will continue today, with slightly higher lifting in the afternoon. Even with the shading the fuels are receptive and at critical moisture levels. The inversion has also prevented large plum growth and has reduced the spotting distance. Do not get complacent as spotting will occur, especially with terrain driven runs and compounded with wind alignment. The wind will be in line with the valley bottom, from the northwest. The downcanyon winds will bring fire from the ridge tops to the valley overnight.

SPECIFIC:

The wind pattern will continue to spread the fire to the southeast during the day. Downslope/canyon winds in the evening could develop. The north side of the fire on the ridge above Carmel Valley Road could develop the strongest downslope/canyon winds. In the same area the River Fire is on the opposite slope above the road. Be aware of the fire conditions and the weather of both fires. The north side of the fire will continue to back against the wind and could be influenced with downcanyon winds in the evening. The fuels in the fire area are dry and will create spotting issues from the trees, however should remain short range with the inversion. The south end of the fire will be in an area of multiple drainages, be aware of slope reversal of the fire front.

AIR OPERATIONS

The mixing height above the fire is low which may limit aircraft use over portions of the fire.

SAFETY

The environment is dryer than in the past days increasing the potential for spots and increased fire behavior. Watch for wind and slope alignment as the wind shifts throughout the day.

ASSIGNMENT LIST (ICS 204 WF)

CONTROLLED UNCLASSIFIED
INFORMATION/BASIC

1. Incident Name: CARMEL ZONE	2. Operational Period: Date From: 08/21/20 Date To: 08/22/20 Time From: 0700 Time To: 0700	3. Branch Division XI AA Page 1 of 1 Alpha-Alpha
--	---	---

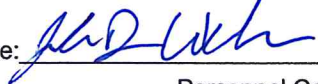
4. Operations Personnel:	
Operations Section Chief: Mike Wink	Night Ops: Polo Rodriguez
Branch Director: Merrick Fields	Branch Safety:
Division/Group Supervisor: Shindler (2802A)	Air Attack:

5. Resources Assigned:		** Resources Below in Bold are 12 Hour **					
Resource Identifier	ALS	OFR	Leader	Personnel	Request #	Hours	Reporting Location
STA XOR 1860A		C	Brian Mckonough	21	E-20	0700-0700	Cachagua Park
STA OES 2802A		R		21	E-44	0700-0700	Cachagua Park
STC MMU 9423C		C	Mike Mills	16	E-1	0700-0700	Cachagua Park
TF XIMC 6110		C	Cedric Censna	21	E-10	0700-0700	Cachagua Park
STG SLU 9342G		C	Danny Richard	21	C-5	0700-0700	Cachagua Park
DOZ FHL 8892		C	Josh Blacksmith	4	E-71	0700-1900	Cachagua Park
DOZ FHL 8893		C	James Kerenkel	2	E-87	0700-1900	Cachagua Park
DOZ PVT E-173		R	Palmer, James	2	E-173	0700-0700	Cachagua Park
DOZ PVT E-175		R	Connor Klouwer	2	E-175	0700-0700	Cachagua Park
WT PVT E-3		C	Brandon Vieira	2	E-3	0700-0700	Cachagua Park
WT PVT E-4		C	Hugh Forester	2	E-4	0700-0700	Cachagua Park
WT PVT E-86		C	James Weirick	3	E-86	0700-0700	Cachagua Park

6. Work Assignments:
 Hold and Improve control lines.
 Construct control lines as direct as possible.
 Plan and begin secondary control lines if possible.
 Perform Tactical Patrol around structures.

7. Special Instructions:

8. Communications							
Name	Ch	Function	Rx Freq	Rx Tone	Tx Freq	Tx Tone	Notes
NIFC C31	1	COMMAND	172.5500N	146.2 (T5)	162.1875N	146.2 (T5)	
CDF T29	6	TACTICAL	151.3475	192.8 (T16)	151.3475	192.8 (T16)	
CDF T15	14	AIR TO GRD	159.2700	192.8 (T16)	159.2700	192.8 (T16)	Air to Ground
CALCORD	15	MEDICAL	156.0750N	156.7 (T6)	156.0750N	156.7 (T6)	
GUARD	16	AIRGUARD	168.6250N		168.6250N	110.9 (T1)	EMERGENCY ONLY

9. Prepared by: Name: Jordan Weber RESL (T) Signature: 

ICS 204 Date/Time: 8/20/2020 2200 Personnel Count: 117

ASSIGNMENT LIST (ICS 204 WF)

CONTROLLED UNCLASSIFIED
INFORMATION/BASIC

1. Incident Name: CARMEL ZONE	2. Operational Period: Date From: 08/21/20 Date To: 08/22/20 Time From: 0700 Time To: 0700	3. Branch Division XI KK Page 1 of 1 Kilo-Kilo
--	---	--


4. Operations Personnel:	
Operations Section Chief: Mike Wink	Night Ops: Polo Rodriguez
Branch Director: Merrick Fields	Branch Safety:
Division/Group Supervisor: Nolan Hale	Air Attack:

5. Resources Assigned:	** Resources Below in Bold are 12 Hour **							
Resource Identifier	ALS	OFR	Leader	Personnel	Request #	Hours	Reporting Location	
STA OES 2804A		C	Eric Ceremony	21	E-12	0700-0700	BEU Station 23	
STC TCU 9442C		C	Brenden Brown	16	E-135	0700-0700	BEU Station 23	
LPF E316		C	Richard Martin	3	E-5	0700-1900	BEU Station 23	
LPF E319		C	Andrew Kenner	3	E-6	0700-1900	BEU Station 23	
STG TBD						0700-0700	BEU Station 23	
STG TBD						0700-0700	BEU Station 23	
CRW SBC CRW10		R	Tyler Gilliam	22	C-9	0700-1900	BEU Station 23	
CRW2 PVT GIZZLEY		C	Theodore Hiner	20	C-4	0700-1900	BEU Station 23	
DOZ BEU 4645		C	Jeff Tressler	2	E-17	0700-0700	BEU Station 23	
DOZ PVT E-35		R	Rodney Carlton	2	E-35	0700-0700	BEU Station 23	
DOZ PVT E-66		C	Karsen Bennett	2	E-66	0700-0700	BEU Station 23	
DOZ PVT E-176		R	Vic Calanchini	2	E-176	0700-0700	BEU Station 23	
DOZ TBD						0700-0700	BEU Station 23	
WT MCR 5544		C		1	E-49	0700-0700	BEU Station 23	
WT MCR 5545		C		2	E-50	0700-0700	BEU Station 23	
WT PVT E-73		C	Randy Wilber	1	E-73	0700-1900	BEU Station 23	
HEQB BAHNMILLER		C	Patricia Bahnmillier	1		0700-0700	BEU Station 23	

6. Work Assignments:
 continue to hold line along San Clamente river bottom.
 congntinue construction of secondary control lines.


7. Special Instructions:

8. Communications							
Name	Ch	Function	Rx Freq	Rx Tone	Tx Freq	Tx Tone	Notes
NIFC C31	1	COMMAND	172.5500N	146.2 (T5)	162.1875N	146.2 (T5)	TONE 5/CHEWS RIDGE
CDF T30	7	TACTICAL	151.3925	192.8 (T16)	151.3925	192.8 (T16)	
CDF T15	14	AIR TO GRD	159.2700	192.8 (T16)	159.2700	192.8 (T16)	Air to Ground
CALCORD	15	MEDICAL	156.0750N	156.7 (T6)	156.0750N	156.7 (T6)	
GUARD	16	AIRGUARD	168.6250N		168.6250N	110.9 (T1)	EMERGENCY ONLY

9. Prepared by: Name: Jordan Weber RESL (T)
 Signature: 
ICS 204 Date/Time: 8/20/2020 2200 Personnel Count: 98

ASSIGNMENT LIST (ICS 204 WF)

CONTROLLED UNCLASSIFIED
INFORMATION/BASIC

1. Incident Name:		2. Operational Period:				3. Branch		Division	
CARMEL ZONE		Date From: 08/21/20	Date To: 08/22/20			XV		OO	
		Time From: 0700	Time To: 0700						
4. Operations Personnel:						Page 1 of 1		Oscar-Oscar	
Operations Section Chief: Mike Wink				Night Ops: Polo Rodriguez					
Branch Director: Mike Petro (T)				Branch Safety:					
Division/Group Supervisor: Travis Thogmartin (9352C)				Air Attack:					
5. Resources Assigned:		** Resources Below in Bold are 12 Hour **							
Resource Identifier	ALS	OFR	Leader	Personnel	Request #	Hours	Reporting Location		
STA OES 2404A		C		21		0700-0700	TBD		
STC BDU 9352C		C	Travis Thogmartin	21	E-15	0700-0700	TBD		
STF XMA 5075F		C	Craig Waag	11	E-2	0700-0700	TBD		
ENG MCF 5532		R		4		0700-0700	TBD		
ENG MCR 5534		C		3		0700-0700	TBD		
ENG CFC 7731		C		3		0700-0700	TBD		
ENG CFC 7732		C		3	E-45	0700-0700	TBD		
ENG6 CFC P7751		C		3		0700-0700	TBD		
STG SLU 9343G		C	Alan Meyerink	32	C-3	0700-0700	TBD		
STG TBD						0700-0700	TBD		
STG TBD						0700-0700	TBD		
STL MVU 9335L		C	Jose Galeano	8	E-13	0700-0700	TBD		
DOZ PVT E-51		R	Coleman, Travis	3	E-51	0700-0700	TBD		
DOZ PVT E-172		R	Kirk, Shane	3	E-172	0700-0700	TBD		
DOZ PVT E-174		R	Anderson, William	2	E-174	0700-0700	TBD		
WT PVT E-75		R	Tim Ayares	2	E-75	0700-0700	TBD		
WT PVT E-80		C	Justin Cross	1	E-80	0700-1900	TBD		
HEQB ULWELLING		R	Ulwelling, Eric	1	O-176	0700-0700	TBD		
6. Work Assignments:									
Improve and hold control lines.									
7. Special Instructions:									
Mop and patrol around structures									
8. Communications									
Name	Ch	Function	Rx Freq	Rx Tone	Tx Freq	Tx Tone	Notes		
NIFC C31	1	COMMAND	172.5500N	146.2 (T5)	162.1875N	146.2 (T5)	TONE 5/CHEWS RIDGE		
CDF T37	13	TACTICAL	159.3375	192.8 (T16)	159.3375	192.8 (T16)			
CDF T15	14	AIR TO GRD	159.2700	192.8 (T16)	159.2700	192.8 (T16)	Air to Ground		
CALCORD	15	MEDICAL	156.0750N	156.7 (T6)	156.0750N	156.7 (T6)			
GUARD	16	AIRGUARD	168.6250N		168.6250N	110.9 (T1)	EMERGENCY ONLY		
9. Prepared by: Name:		Jordan Weber			RESL (T)		Signature: 		
ICS 204		Date/Time: 8/20/2020 2200			Personnel Count: 121				

ASSIGNMENT LIST (ICS 204 WF)

CONTROLLED UNCLASSIFIED
INFORMATION//BASIC

1. Incident Name:	2. Operational Period:	3. Branch	Division
CARMEL ZONE	Date From: 08/21/20 Date To: 08/22/20 Time From: 0700 Time To: 0700	XV	QQ

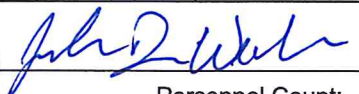
4. Operations Personnel:		Page 1 of 1	Quebec-Quebec
Operations Section Chief: Mike Wink	Night Ops: Polo Rodriguez		
Branch Director: Mike Petro (T)	Branch Safety:		
Division/Group Supervisor: Elliott Mariana	Air Attack:		

5. Resources Assigned:		** Resources Below in Bold are 12 Hour **					
Resource Identifier	ALS	OFR	Leader	Personnel	Request #	Hours	Reporting Location
STC RRU 9311C		C	William Bryant	17	E-15	0700-0700	TBD
STC TBD						0700-0700	TBD
STC TBD						0700-0700	TBD
ENG MCF 5533		R	Justin Linqvist	3	E-11	0700-0700	TBD
STG TBD						0700-0700	TBD
STG TBD						0700-0700	TBD
CRW TLC OAK VALLEY		R	Torres, Rafael	19	C-24	0700-0700	TBD
STL SLU 9348L		C	Damien Juarez	6	E-14	0700-0700	TBD
DOZ PVT E-50		C	Chris Sherer	1	E-50	0700-1900	TBD
DOZ PVT E-64		C	Nathan Elliott	2	E-64	0700-0700	TBD
DOZ PVT E-68		C	Kevin Dye	2	E-68	0700-0700	TBD
DOZ PVT E-114		C	Zach Variun	2	E-114	0700-0700	TBD
WT CFC 7742		C		2	E-51	0700-0700	TBD
WT PVT E-85		C	Justin Cross	3	E-85	0700-0700	TBD
FEMT ARTHUR		R	Eric Arthur	1	O-223	0700-0700	TBD
FEMT HARRIS		R	Grant Harris	1	O-226	0700-0700	TBD
ATASCADERO AMBULANCE		R	Andrew Hawkins	2	E-221	0700-1900	TBD

6. Work Assignments:
Hold and Improve control lines.

7. Special Instructions:

8. Communications							
Name	Ch	Function	Rx Freq	Rx Tone	Tx Freq	Tx Tone	Notes
NIFC C31	1	COMMAND	172.5500N	146.2 (T5)	162.1875N	146.2 (T5)	TONE 5/CHEWS RIDGE
CDF T36	12	TACTICAL	151.1525	192.8 (T16)	151.1525	192.8 (T16)	
CDF T15	14	AIR TO GRD	159.2700	192.8 (T16)	159.2700	192.8 (T16)	Air to Ground
CALCORD	15	MEDICAL	156.0750N	156.7 (T6)	156.0750N	156.7 (T6)	
GUARD	16	AIRGUARD	168.6250N		168.6250N	110.9 (T1)	EMERGENCY ONLY

9. Prepared by: Name: Jordan Weber RESL (T)
Signature: 

ICS 204 Date/Time: 8/20/2020 2200 Personnel Count: 61

ICS 205 - INCIDENT RADIO COMMUNICATIONS PLAN

1. Incident Name:
CARMEL ZONE
Incident Channels

2. Date/Time Prepared
Date: 08/20/2020
Time: 2230

3. Operational Period:
Date To: 08/22/20
Time To: 0700

4. Communications									
Ch#	Function	Name	Assigned To	Rx Freq	Rx Tone	Tx Freq	Tx Tone	Notes	
1	COMMAND	NIFC C31	CARMEL ZONE	172.5500N	146.2 (T5)	162.1875N	146.2 (T5)	TONE 5/CHEWS RIDGE	
2	COMMAND	NIFC C8	CARMEL ZONE	169.5375N	146.2 (T5)	164.7125N	146.2 (T5)	TONE 5/PALO ESCRITO	
3									
4	COMMAND	NIFC C5	ALL DIVS	169.7500N	146.2 (T5)	167.1000N	146.2 (T5)	TONE 5/LOWER TORO	
5									
6	TACTICAL	CDF T29	DIV AA	151.3475	192.8 (T16)	151.3475	192.8 (T16)		
7	TACTICAL	CDF T30	DIV KK	151.3925	192.8 (T16)	151.3925	192.8 (T16)		
8	TACTICAL	CDF T31	NOT ASSIGNED	159.3825	192.8 (T16)	159.3825	192.8 (T16)		
9	TACTICAL	CDF T24	NOT ASSIGNED	151.3325	192.8 (T16)	151.3325	192.8 (T16)		
10	TACTICAL	CDF T34	NOT ASSIGNED	151.4675	192.8 (T16)	151.4675	192.8 (T16)		
11	TACTICAL	CDF T35	NOT ASSIGNED	159.3225	192.8 (T16)	159.3225	192.8 (T16)		
12	TACTICAL	CDF T36	DIV QQ	151.1525	192.8 (T16)	151.1525	192.8 (T16)		
13	TACTICAL	CDF T37	DIV OO	159.3375	192.8 (T16)	159.3375	192.8 (T16)		
14	AIR TO GRD	CDF T15	ALL DIVS	159.2700	192.8 (T16)	159.2700	192.8 (T16)	Air to Ground	
15	MEDICAL	CALCORD	ALL DIVS	156.0750N	156.7 (T6)	156.0750N	156.7 (T6)		
16	AIRGUARD	GUARD	ALL DIVS	168.6250N		168.6250N	110.9 (T1)	EMERGENCY ONLY	
17									
18									
19									
20	AIRGUARD	GUARD	ALL DIVS	168.6250N		168.6250N	110.9 (T1)	EMERGENCY ONLY	

5. Special Instructions
VER 2= 8/20/2020

6. Prepared by (Communications Unit Leader): Name: CORY COSTA COML(T)
Signature: 
Date/Time: 08/20/20 2230

CARMEL AIR OPERATIONS SUMMARY ICS-220

Incident Name / Number
 CARMEL ZONE / CA BEU 004081

Sunrise 6:28 **Cutoff** 1920 **Sunset** 1950

Time Prepared
 1800

Date Prepared
 Thursday, August 20, 2020

Prepared By
 Matt Hill

Operational Period - Time
 Friday August 21, 2020 0700-0700

General Remarks, Safety Notes, Hazards, Air Operations Special Equipment, etc.
 TRACK ALL DIPSITE LOCATIONS / NUMBER OF DIPS / GALLONS TAKEN.
 TRACK ALL DROP LOCATIONS / NUMBER OF DROPS / GALLONS DROPPED
 ALL GPS DATA TO BE COLLECTED IN DEGREES.MINUTES.DECIMAL MINUTES FORMAT.

AVOID Aerial Application of Retardant / Foam / Agent within 300' of Waterways, Bodies of Water, etc.
 If Retardant / Foam / Agent is Dropped Within These Areas Immediately Notify the AOB and Provide the Following Information: Lat/Long, Estimated Number of Gallons and a Map Detailing The Area.

Your Sunrise and Sunset info has not been updated for the current Op period

Frequency	RX	Tone	TX	Tone	AM / FM
COMMAND MFC C5	169.5000	146.2 (T5)	167.1000	146.2 (T5)	FM
CARMEL AIR/GROUND-TAC	159.2700	192.8 (T16)	159.2700	192.8 (T16)	FM
CARMEL AIR/AIR ROTARY	123.6250		123.6250		AM
AIR/AIR BRIEFING	123.1750		123.1750		AM
AIR TACTICS	172.2500		172.2500		FM
TOLC	122.2750		122.2750		AM
DECK	163.1000		163.1000		FM
CALCORD - MEDICAL	156.0750	156.7 (6)	156.0750	156.7 (6)	FM
AIRGUARD - Emergency Only	168.6250	110.9 (1)	168.6250		FM

HELICOPTERS (Use page 2 if Needed)

FAA #	Type	Make/Model	Helibase	Avail	Start	Remarks
22EA	3	208B-3	Marina	0700	0730	BUCKET/PAX A-38
191SG	3	208B-3	Marina	0700	0730	BUCKET/PAX A-39
405LH	3	407	Marina	0700	0730	BUCKET/PAX A-30
877XL	3	350-B3	Marina	0700	0730	BUCKET/PAX A-41
1957Z	3	206 L-4	Marina	0700	0730	BUCKET/PAX A-42
498PT	3	350-B2	Marina	0700	0730	BUCKET/PAX A-43
C-406	2	UH-1H	Marina	0700	0730	TANK/HOIST/PAX A-6
373PA	2	Bell 212	Marina	0700	0730	BUCKET/LONGLINE/PAX A-26
40CU	1	CH-47D	Marina	0700	0730	TANK/RESTRICTED A-32

FIXED WING (Use Page 2 if Needed)

FAA #	Type	Make/Model	Base	Avail	Start	Remarks

Helibase Information	TFR Information	Rescue Ship Information
Name Marina Latitude 36 40.8 Longitude -121 45.7892	Request # A- 52 Polygon: NM Altitude: 5000' MSL Centerpoint: Long NOTAMS: 0/5138 Frequency 123.6250 http://tfr.faa.gov/tfr2/list.html	Day Hoist Name C-406 Phone 616-704-9594 Make/Model UH-1H Location Marina Request Procedure for These Aircraft: Incident Communications See Medical Plan For Additional Info

Position	Name	Phone	Trainee	Phone
AOBD	Matt Hill	(530) 708-2707		
ASGS	Thomas Smith	(831) 233-8180		
HEBM	Peter York	(530) 386-2147		
HLCO	Stephen Martin	(530) 409-7710		
ATGS	Tom Firth	(831) 601-2320		

SAFETY MESSAGE/PLAN (ICS 208)

River CA-BEU-004024
Carmel CA-BEU-004081

Operational Period: Date From: 8/21/20 Date to: 8/22/20
Time From: 0700 Time to: 0700

//// **////**
MAJOR HAZARDS AND RISKS:

Wildland/Urban Interface:

Reference the **CAL FIRE** structure defense guide card & pg. 12-16 in the IRPG. Keep alert for WUI hazards.

Entrapment Avoidance:

Adhere to the 10 Standard Firefighting orders. Consider the 18 Situations that Shout Watch Out. Consider the Common Denominators of Fire Behavior on Tragedy Fires. Maintain LCES. Establish your decision point(s). Conduct risk management.

Safety Zones:

Locations where the threatened firefighter may find refuge from the danger. Safety zones should be conceptualized and planned as a location where no shelter is needed.

Driving:

Steep, narrow or dusty roads throughout fire area. Maintain safe following distances and appropriate speed when traversing roads. Flag unstable roads and other hazards that may be encountered while driving. Follow posted speed limits while driving in Toro base camp.

Power lines:

Follow Power Line Safety guidelines (IRPG pg.24.)
Follow FIRESCOPE identification and management of Life Safety Zones procedures, 3 horizontal strands of fire line tape, write "**Do not enter**" or "**Do not cross**"

Heavy Equipment:

Utilize good spacing and watch for rollout and falling debris. Stay visible and work above and not below equipment. Maintain situational awareness at all times.


Hazardous Trees and Snags:

Be alert of snags. When crews are working in a very hazardous area stay diligent and flag hazardous areas. Avoid taking breaks under trees.



Communications:

Ensure your radio load is current per ICS 205 in the IAP.
Place human repeaters as necessary to communicate.

Site Safety Plan Required? Yes: No: **X**
Approved Site Safety Plan(s) Located at: N/A

Prepared By: Dennis Lange Position/Title: SOF1
Signature: 

MEDICAL PLAN (ICS 206)

1. Incident Name: River / Carmel Fire		2. Operational Period: Date From: 08/21/2020 Time From: 07:00		Date To: 08/22/2020 Time To: 07:00				
3. Medical Aid Stations:		MEDICAL UNIT LEADER: (213) 604-1258		COMMUNICATIONS UNIT: (805) 903-3489				
Name	Location	Contact Number(s)/Frequency	Level of Service					
Cal-Mat	At Base Camp next to food line	(951) 757-4670	ALS					
4. Transportation (indicate air or ground):								
Ambulance Service	Location	Contact Number(s)/Frequency	Level of Service					
AMR MEDIC (GROUND)	DP-30	Command	ALS					
Monterey Co Fire (GROUND)	TBD	Command	ALS					
Cal Star (AIR)	Salinas or Gilroy	Command	ALS					
Cal Fire 406 (AIR)	Local Unit Response	Command	ALS					
H70 CHP (HOIST)	Paso Robles	Command	ALS					
5. Hospitals:								
Hospital Name	Address, Latitude & Longitude if Helipad	Contact Number(s)/Frequency	Travel Time		Trauma Center	Burn Center	Helipad	
			Air	Ground				
SALINAS VALLEY MEMORIAL HOSPITAL	450 E Romie Ln, Salinas, CA 93901	(831) 759-3257	N/A	20 MIN	NO	NO	NO	
NATIVIDAD MEDICAL CENTER	1441 Constitution Blvd, Salinas, CA 93906	(831) 647-7611	7 MIN	23 MIN	YES LEVEL 2	NO	YES	
Santa Clara Valley Medical Center	751 S Bascom Ave, San Jose, CA 95128	(408) 885-5000	25 MIN	1Hr 15MIN	YES LEVEL 1	YES	YES	
COMMUNITY HOSPITAL OF THE MONTEREY PENINSULA	23625 Holman Hwy, Monterey, CA 93940	(831) 624-5311	N/A	20 MIN	NO, Stroke/STEMI	NO	NO	
STANFORD HEALTH CARE	300 Pasteur Dr. Stanford, CA 94305	(650) 723-4000	28 MIN	1Hr 45 MIN	YES	NO	YES	
6. Special Medical Emergency Procedures:			BASE CAMP EMERGENCY:					
LINE EMERGENCY:			CONTACT COMMUNICATIONS UNIT AT: (805) 903-3489					
Crew Supervisor to contact Division Supervisor with patient complaint/condition, location, and resource needs.			report patient complaint/condition and location. Medical Staff will respond to stabilize incident					
<ul style="list-style-type: none"> • Division Supervisor contacts and gives report on conditions, complaint/condition, and resource needs to: <ol style="list-style-type: none"> 1. Nearest Line FEMT/FEMP 2. Communications Unit • Emergency or Priority traffic received: Communication Unit will clear the command channel for emergency traffic only, for the duration of the MAJOR IWI • Communications Unit will make proper notifications • OPERATIONS can declare a MAJOR IWI based on the report on conditions from the division supervisor • Division Supervisor or designee will serve as point of contact (IWI SUPERVISOR) and run the emergency utilizing the <u>COMMAND CHANNEL</u> and <u>CALCORD</u> for the tac net during the IWI 			<ul style="list-style-type: none"> • COMMUNICATIONS Unit contacts: <ol style="list-style-type: none"> 1. Operations 2. Medical 3. Safety 4. Logistics 					
ALL EMERGENCIES: Secure the area and identify witnesses for later investigation. Keep an accurate log of events			INJURY REPORTING PROCEDURES					
			CHIEF COMPLAINT _____					
			LOCATION OF PATIENT _____					
			TRANSPORT REQUEST BY: AIR ___ GROUND ___					
			DIVISION _____ CREW _____					
			POINT OF PICKUP _____					
			LAT _____ LONG _____					
			IS EMT WITH THE PATIENT: YES ___ NO ___					
			AGE _____					
			SEX: MALE ___ FEMALE ___					
			START 20 MINUTE TIMER IF IWI					
7. Prepared by (Medical Unit Leader): Name: RAICE WICKLAS			Signature: 					
8. Approved by (Safety Officer): DENNIS LANGE			Signature: 					
ICS 206	IAP Page _____	Date/Time: 08/20/2020 2000						



River/Carmel Inc

SERVICES SCHEDULE



Base Camp:

MKU: Breakfast: 0500-1100

Dinner: 1700-2200

Sack Lunch Distribution: 0600-2000

Laundry Service: 0600-2200

Supply: 0600-2200

Saw Shop: 0600-2200

Showers: 24 hrs/day

FORT ORD (Sleep Trailers):

Showers: 0500-2300

Laundry Service: 0600-2300



PUBLIC INFORMATION SECTION



Media Information Line
(831) 647-6257

Public Information Line
(925) 532-5455
2-1-1



@CALFIREBEU
@CAL_FIRE



@CALFIREBEU
@CALFIRE

RIVER FIRE STATUS	
Incident Start Date: 8/16/2020	Incident Start Time: 3:04 A.M.
Cause: Lightning	Acres:
Containment:	Total Personnel:

CARMEL FIRE STATUS	
Incident Start Date: 8/18/2020	Incident Start Time: 3:00 P.M.
Cause: Under investigation	Acres:
Containment:	Total Personnel:

2-1-1 – The public is encouraged to call 2-1-1 to receive current incident information.

MEDIA – The California State Penal Code Section 409.5(d) allows the news media to enter scenes of disaster, riot or civil disturbance. Properly identified members of the news media should not be restricted from entering locations specified within the code. However, this does not include crime scenes, private property and does not imply that the news media may interfere with incident operations while they are in the areas of concern.

CAL FIRE SOCIAL MEDIA POLICY – When assigned to a CAL FIRE incident, you will adhere to the CAL FIRE Social Media Policy, Section 0691.



PHOTOGRAPHS AND VIDEOS OF INCIDENT –The Public Information Office would like copies of the videos and pictures that you may take when *not* engaged in fire suppression activity, duties of your overhead assignment, or in an unsafe environment. Please bring your videos and pictures to the Public Information trailer; they will be reviewed and possibly uploaded to our many CAL FIRE social media sites. Remember, we do not want photographs or videos that depict unsafe, unprofessional or embarrassing circumstances, which are a serious breach of ethics.

LOST AND FOUND – The Information Section will manage lost and found items for the incident.

MAIL DELIVERY – As a courtesy, the following address has been secured for assigned personnel to has personal correspondence delivered.

**RIVER/CARMEL FIRE - TORO PARK
C/O [YOUR NAME AND RQUEST NUMBER]
501 MONTEREY-SALINAS HWY 68, SALINAS, CA 93908**

RIVER Inc.

CA-BEU-004024

CARMEL Inc.

CA-BEU-004081

FINANCE MESSAGE



- Please come by the Time Unit and start your and update your FC-33
- Vendors please drop off your agreements to the Time Unit
- Shift Tickets need to be completed by line supervisor and turned in at the end of each shift.
- All injuries need to be reported to the COMP / CLAIMS Unit
- All property Damage must be reported and documented
- Please report any Vehicle Damage this includes Rental Vehicles
- Local Government please check in with OES
- **OFF-SITE FEEDING IS NOT APPROVED**

INCIDENT BILLING INFORMATION

CAL FIRE – SAN BENITO MONTEREY UNIT

2221 GARDEN RD
MONTEREY, CA 93940

E-fund Billing Code: 013850
PCA 00900

SHIFT TICKET EXAMPLE

EMERGENCY SHIFT TICKET and EVALUATION FORM					Contractor Name H2O DUDE	
Incident or Project Name WALL		Incident Number CABTU 010975	Request Number E or S # Here		Operator #1 BOB SMITH	Operator #2
Agreement Number XXX - 000000 - 00						
Equipment Make FREIGHTLINER			Equipment Model / Type WATER TENDER 2500 + GAL			
Serial Number 1XP3ESMP14239012			Licence Number 55555555			
Equipment Use (Circle) Hours Days / Miles						
Date Mo / Day	Start	Stop	Work	Assignment		
8/3	0700	1900	12	DIV Z		
8/4	1900	2400	5	OFF SHIFT		
8/4	0001	0700	7	OFFSHIFT		
Vendor Rating Poor* Avg. Good Exc. N/A						
Met Performance Expectations				Vendor Rating must be done.		
Equipment in Safe Working Condition						
Operator Skill Level						
Operates Safely						
Operator's Cooperation Level						
Overall Performance						
Govt. Rep. Name and Position - PRINT Mike Weber					Operator Furnished By: <input checked="" type="checkbox"/> Contractor <input type="checkbox"/> Government	
Govt. Rep. Signature <i>Mike Weber</i>					Operating Supplies Furnished By: <input checked="" type="checkbox"/> Contractor <input type="checkbox"/> Government	
Contractor Signature <i>Bob Smith</i>					Equipment Status <input checked="" type="checkbox"/> Inspected <input checked="" type="checkbox"/> Under Agreement <input type="checkbox"/> Released by Government <input type="checkbox"/> Withdrawn by Contractor	
Date 08/04/15					Time 0800	
* NOTE: Any rating of POOR requires an explanation in Comment Section. **Final evaluation or for more documentation, use an ICS Form 230 or equivalent.					CALFIRE 297 (Rev 3-2011)	
Pink - Finance		Blue - Home Unit HE Coordinator		Yellow - Vendor		White - Govt Representative

EMERGENCY SHIFT TICKET and EVALUATION FORM					Contractor Name WATER GUY	
The responsible Government Officer will complete this form each shift						
Incident or Project Name WALL		Incident Number CABTU 010975	Request Number E OR S # Here		Operator #1 BOB SMITH	Operator #2 BILL SMITH
Agreement Number XXX - 000000 - 00						
Equipment Make PETERBUILT			Equipment Model / Type WATER TENDER 2500 + GAL			
Serial Number 1XP3ESMP14239012			Licence Number 9999999			
Equipment Use (Circle) Hours Days / Miles						
Date Mo / Day	Start	Stop	Work	Assignment		
8/3	0700	2400	17	DIV M		
8/4	0001	0700	7	DIV M		
Vendor Rating Poor* Avg. Good Exc. N/A						
Met Performance Expectations				Vendor Rating must be done.		
Equipment in Safe Working Condition						
Operator Skill Level						
Operates Safely						
Operator's Cooperation Level						
Overall Performance						
Govt. Rep. Name and Position - PRINT Mike Weber					Operator Furnished By: <input checked="" type="checkbox"/> Contractor <input type="checkbox"/> Government	
Govt. Rep. Signature <i>Mike Weber</i>					Operating Supplies Furnished By: <input checked="" type="checkbox"/> Contractor <input type="checkbox"/> Government	
Contractor Signature <i>Bob Smith</i>					Equipment Status <input checked="" type="checkbox"/> Inspected <input checked="" type="checkbox"/> Under Agreement <input type="checkbox"/> Released by Government <input type="checkbox"/> Withdrawn by Contractor	
Date 08/04/15					Time 0800	
* NOTE: Any rating of POOR requires an explanation in Comment Section. **Final evaluation or for more documentation, use an ICS Form 230 or equivalent.					CALFIRE 297 (Rev 3-2011)	
Pink - Finance		Blue - Home Unit HE Coordinator		Yellow - Vendor		White - Govt Representative

Turn shift tickets into Finance.

SHIFT TICKET EXAMPLE

EMERGENCY SHIFT TICKET and EVALUATION FORM					Contractor Name		
Incident or Project Name LILAC INC			Incident Number CAMVU024612		Request Number E#		
Agreement Number XXX - 000000 - 00					Operator #1 BOB SMITH		
Equipment Make CAT					Operator #2 TOM SMITH		
Equipment Model / Type D6XM					Operator Furnished By: <input checked="" type="checkbox"/> Contractor <input type="checkbox"/> Government		
Serial Number FULL VIN#					Licence Number 1234567		
Operating Supplies Furnished By: <input checked="" type="checkbox"/> Contractor <input type="checkbox"/> Government					Equipment Status		
Equipment Use (Circle) Hours Days / Miles					<input checked="" type="checkbox"/> Inspected <input type="checkbox"/> Under Agreement		
Date Mo / Day Start Stop Work Assignment					<input type="checkbox"/> Released by Government		
12/8 0700 2400 17 DIV M					<input type="checkbox"/> Withdrawn by Contractor		
12/9 0001 0700 7 DIV M					Remarks/Comments **		
					2 OPERATORS		
Vendor Rating					Govt. Rep. Name and Position - PRINT		
Poor* Avg. Good Exc. N/A					Mike Weber		
Met Performance Expectations					Govt. Rep. Signature		
Equipment in Safe Working Condition					<i>Mike Weber</i>		
Operator Skill Level					Contractor Signature		
Operates Safely					<i>Bob Smith</i>		
Operator's Cooperation Level					Date Time		
Overall Performance					08/04/15 0800		
* NOTE: Any rating of POOR requires an explanation in Comment Section.					CALFIRE 297		
**Final evaluation or for more documentation, use an ICS Form 230 or equivalent.					(Rev 3-2011)		
Pink - Finance		Blue - Home Unit HE Coordinator		Yellow - Vendor		White - Govt Representative	

EMERGENCY SHIFT TICKET and EVALUATION FORM					Contractor Name		
The responsible Government Officer will complete this form each shift							
Incident or Project Name LILAC INC			Incident Number CAMVU 024612		Request Number E #		
Agreement Number XXX - 000000 - 00					Operator #1 BOB SMITH		
Equipment Make TRANSPORT/ KENWORTH					Operator #2 TOM SMITH		
Equipment Model / Type COZAD TRAILER /26 WHEELS					Operator Furnished By: <input checked="" type="checkbox"/> Contractor <input type="checkbox"/> Government		
Serial Number 1XP3ESMP14239012					Licence Number 9999999		
Operating Supplies Furnished By: <input checked="" type="checkbox"/> Contractor <input type="checkbox"/> Government					Equipment Status		
Equipment Use (Circle) Hours Days / Miles					<input checked="" type="checkbox"/> Inspected <input type="checkbox"/> Under Agreement		
Date Mo / Day Start Stop Work Assignment					<input type="checkbox"/> Released by Government		
12/8 0700 2400 17 DIV M					<input type="checkbox"/> Withdrawn by Contractor		
12/9 0001 0700 7 DIV M					Remarks/Comments **		
					2 OPERATORS		
Vendor Rating					Govt. Rep. Name and Position - PRINT		
Poor* Avg. Good Exc. N/A					Mike Weber		
Met Performance Expectations					Govt. Rep. Signature		
Equipment in Safe Working Condition					<i>Mike Weber</i>		
Operator Skill Level					Contractor Signature		
Operates Safely					<i>Bob Smith</i>		
Operator's Cooperation Level					Date Time		
Overall Performance					08/04/15 0800		
* NOTE: Any rating of POOR requires an explanation in Comment Section.					CALFIRE 297		
**Final evaluation or for more documentation, use an ICS Form 230 or equivalent.					(Rev 3-2011)		
Pink - Finance		Blue - Home Unit HE Coordinator		Yellow - Vendor		White - Govt Representative	

Turn shift tickets into Finance.

eFC-33 INITIAL INPUT FORM

1	2	3	4	5	6	7
---	---	---	---	---	---	---

Overhead: complete one form per person.
All Others: complete one form per vehicle.

Request Number						
E	1	2	3	4	1	

State / Agency	Incident Number	Incident Name	Incident Index Code	Incident PCA Code
CA				
S	L	U	0	1
	2	3	4	MOSQUITO

Strike Team	Resource ID - Fire Assignment	Home Station / Office Location
S	T	
9	3	2
	5	C
	E-3499	PASO ROBLES

YOUR NORMAL DUTY SCHEDULE	24 Hr 8-8	24 Hr 7-7	Other
	<input checked="" type="checkbox"/>		
Portal to Portal?	<input checked="" type="checkbox"/>		
YOUR AGENCY	CAL FIRE		
HOME UNIT	S	L	U
COMMIT			
RELEASE			
YOUR CELL PHONE #	805-922-2086		

PERSONNEL	Schedule	First Name	Rank or Classification	# of Regular Duty Scheduled Hours per Day								
				Mon	Tue	Wed	Thu	Fri	Sat	Sun		
EMPLOYEE 1	A											
EMPLOYEE 2	B											
EMPLOYEE 3	Other											
EMPLOYEE 4												
EMPLOYEE 5												
EMPLOYEE 6												
	✓ One Box	Johnson	Robert	FC	24	24	24	24				

VEHICLE	Schedule	Other If Other, explain	Radio ID	Kind of Vehicle	ID No/X No
	A				
VEHICLE 1					X
VEHICLE 2					X
	✓ One Box		E-3499	FTH	0
	Chainsaw Quantity:	Portable Pump?			1
					2
					3

Put a Dozer and it's Transport on a single form. All others, use one form per individual vehicle.

ADDITIONAL INFO





Training Specialist Message



All State, Federal and local government agency Trainees working on Position Task Books will need to register with the Incident Training Specialist. This will ensure proper that each trainee receive proper credit and documentation for their assignment.

The Training Specialist is in trailer row next to Check -in.

DON'T WAIT UNTIL DEMOBILIZATION TO STOP BY.

**Dave Randolph
Training Specialist
(805) 857-4820**



FIRING OPERATION CHECKLIST

Location: _____

Date: _____ Time: _____

Firing Supervisor: _____

1. Personnel Briefing

- Objectives
- Conditions (fire environment)
- Resource assignments identified
 - Firing personnel
 - Holding forces
 - Lookouts
- Ignition plan/sequence
- Communication Plan
- Contingency Plan
- Safety issues

2. Go / No-Go

- All personnel briefed
- Weather forecast reviewed
- Resources in place
- Lookouts posted as needed
- Anchor and termination firing points identified
- Communications systems in place
- Fire behavior forecast reviewed
- Escape routes and safety zones established and made known
- Adjoining forces/Air Attack notified

3. Approval Prior To Firing

- Division Supervisor
- Branch Director
- Operations

4. Other Notifications

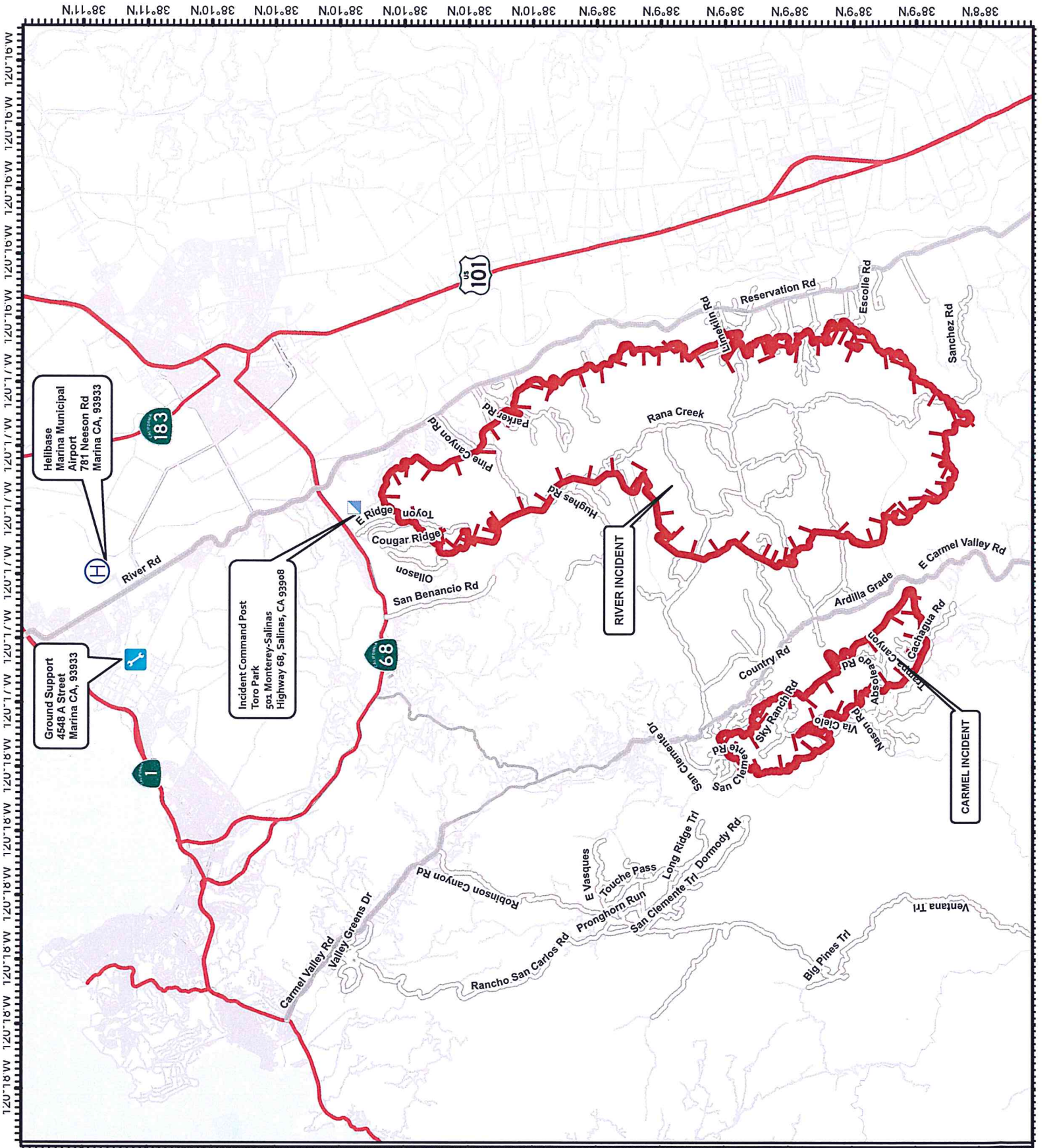
- Other: _____
- Other: _____

Attach Firing Operations Checklist to ICS-214

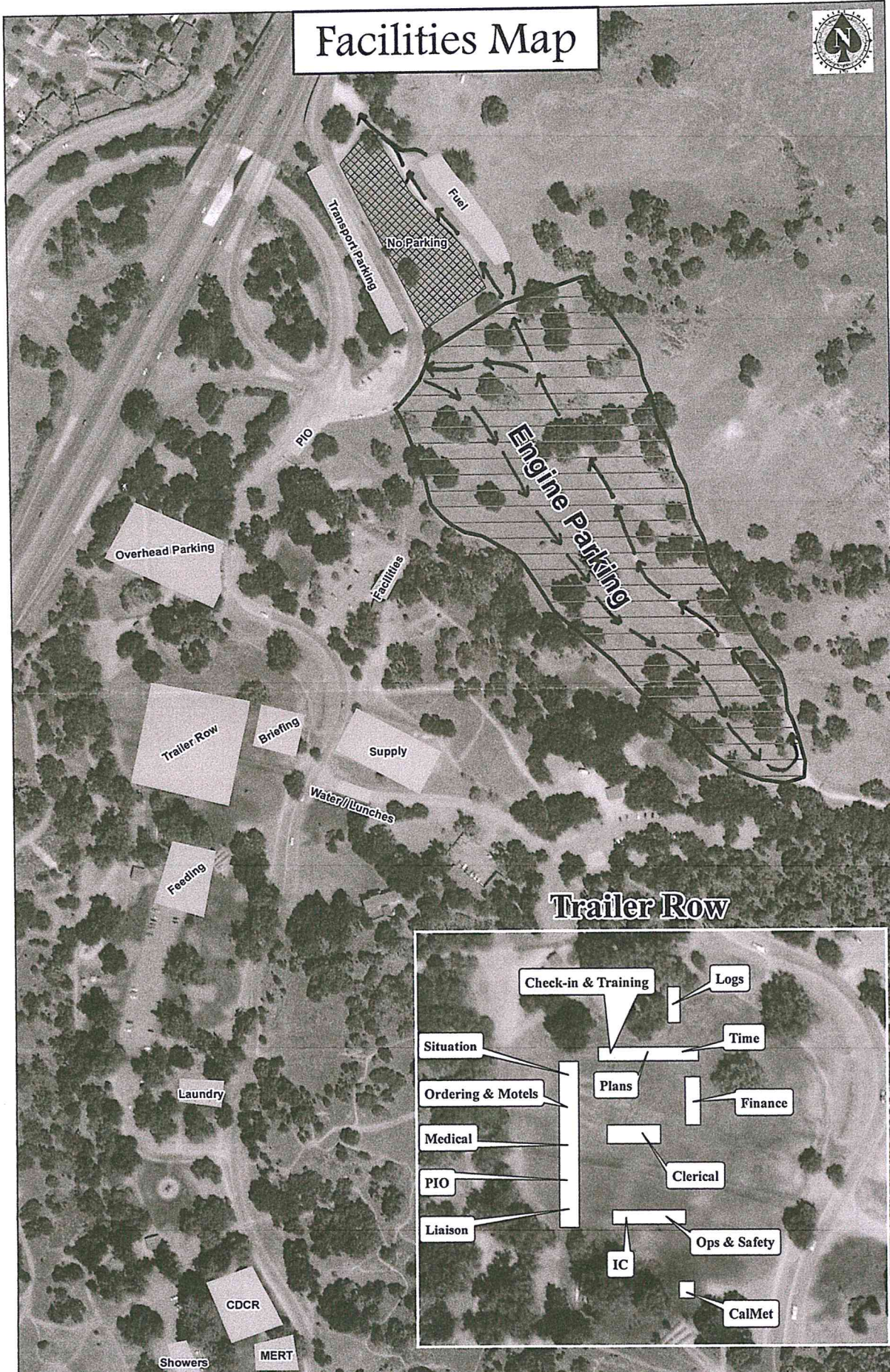


August 21-22, 2020
 River Incident
 CA-BEU004024
 Carmel Incident
 CA-BEU004081

- Legend**
- Fire Boundary
 - Major Highways
 - Highways
 - Major Roads
 - Local Streets
 - ICP
 - Helibase
 - Ground Support



Facilities Map



Trailer Row

