

INCIDENT ACTION PLAN

RIVER - CA-BEU-004024

CARMEL - CA-BEU-004081



Sunday

OPERATIONAL PERIOD

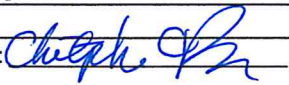
8/23/2020 0700

to

8/24/2020 0700

Briefing on CDF TAC 24

ORGANIZATION ASSIGNMENT LIST (ICS 203)

1. Incident Name: RIVER ZONE		2. Operational Period: Date From: 8/23/2020 Time From: 0700		Date To: 8/24/2020 Time To: 0700	
3. Incident Commander(s) and Command Staff:			7. Operation Section:		
IC/UC's	Nick Truax, George Huang (T)	Operations	Mike Wink		
Deputy	Greg Bertelli	Deputy Operations	Tony Brownell		
Safety Officer	Dennis Lange, Brad Niven (T)	Night Ops	Polo Rodriguez		
Information Officer	Emily Smith, Isaac Sanchez (T)	Staging Area			
Liaison Officer	Brandon Smith, Brandon Gunn (T)	Branch	I	Kevin Patton	
4. Agency/Organization Representatives:		Division/Group	P	Mike Deponce (1521C)	
Agency/Organization	Name	Division/Group	A	Chris Campagan (2830A)	
Monterey Regional Fire	Michael Urquides	Division/Group	D	Josh Campbell (9431C)	
CAL OES	David Franklin	Division/Group			
Monterey Sheriff	Jason Smith	Division/Group			
CHP	Kyle Foster	Branch	II	Aaron Latta	
BLM	Dave Slibsager	Division/Group	F	Ron Busch (2376C)	
Monterey County OES	Kelsey Scanlon	Division/Group	I	Christian Jauragui (9460C)	
Red Cross	Patsi Gasca	Division/Group	L	Preston Fouts (9331C)	
CCC	Miguel Diaz	Division/Group			
PG&E	Geoff Money	Division/Group			
Monterey Farm Bureau	Norm Groot	Staging Area	TORO	TBD	
Monterey County Parks	Micah Beardsall	Division/Group			
CA American Water	Albert Sanchez	Division/Group			
Monterey CO. SPCA	Rosanna Leighton	Division/Group			
CDCR	Micheal Nilsson	Division/Group			
		Division/Group			
		Branch	RIVER CONT.	TBD	
		Division/Group			
5. Planning Section:		Division/Group			
Chief	Chris Carrera	Division/Group			
Deputy	Chris Reneau	Division/Group			
Resource Unit	Paul Carlos, BJ Corey, Jordan Weber (T)	Division/Group			
Situation Unit	Rob DeCamp, Matt Thau (T)	Branch			
Documentation Unit	Janet Arthur	Division/Group			
Demobilization Unit	Ryan Villarino	Division/Group			
GISS	Suzann Leininger, Eric Scovel (T)	Division/Group			
FBAN	Don Watt	Division/Group			
IMET	James Dudley	Division/Group			
Training Tech Spec	Dave Randolph	Air Operations Branch		Director:	Matt Hill
		Air Support Group Supervisor		Thomas Smith	
		Air Tactical Group Supervisor			
6. Logistics Section		Helibase Manager		Peter York	
Chief	Jesse Morris, Craig White				
Supply Unit	Lon Story, Mat Brabo (T)	8. Finance/Administration Section:			
Facilities Unit	Jacob Guerra, Travis Heard	Chief	Jack Franklin		
Ground Support Unit	Pete Mock, Michael Darcy	Deputy	Bob Counts		
Communications Unit	Tom Webb	Time Unit	Shannon Thompson, Al DaSilva (T)		
Medical Unit	Raice Wicklas	Procurement Unit	Tim Myer, Matt Rueckheim (T)		
Food Unit	David Jones	Comp/Claims Unit	Alyssa Hagerman		
Motel Unit	Matt Aldrich	Cost Unit	Suzi Cain		
Prepared By: Name:	Chris Reneau	Position/Title:	DPSC	Signature:	
ICS 203		Date/Time:	8/22/2020 1900		



INCIDENT Weather Forecast



FORECAST NO: 5
 PREDICTION FOR: 24 Hour Shift
 SHIFT DATE: 08/23/20
 TIME AND DATE
 FORECAST ISSUED: 1900 on 08/22/20

NAME OF FIRE: River
 UNIT: Cal Fire CA-BEU
 SIGNED: *Jim B. Dudley*
 Jim Dudley Incident Meteorologist

...Red Flag Warning for Gusty Outflow Winds and Dry Lightning in Effect From 5 am Sunday through 5 pm Monday...

WEATHER DISCUSSION

A weather disturbance will move northward up the California coast Sunday bringing instability and enough sub-tropical moisture for the formation of thunderstorms with gusty and erratic outflow winds and dry lightning. **A Red Flag Warning is in effect from 0500 Sunday through 1700 Monday.** In addition, the weather disturbance will shift the winds over the fire to a south to southeast direction. The combination of the new wind direction and the potential for outflow winds from any thunderstorm that forms over the fire or moves through the fire area will make for a potentially dangerous gusty and strong wind situation. Outflow winds in previous thunderstorms have produced gusts to as much As 65 mph.

...Red Flag Warning in effect for Gusty Outflow Winds and Dry Lightning...

. SUNDAY ...

Sky/weather.....Partly cloudy with a 30 percent of dry thunderstorms. Dry lightning is Possible with little rain accumulation expected.
 Max temperature.....Highs 84-88.
 Min humidity.....20-25 percent.
 Wind (20 ft).....Southeast 3-8 mph. Winds erratic in direction and very strong with gusts of 40 to 65 mph possible near any thunderstorms.
 CWR.....0 percent.
 LAL.....6.
 Mixing height.....Increasing to around 6000 ft AGL.
 Transport winds.....Southeast to east 12 mph.
 Marine layer.....800 ft.

...Red Flag Warning in effect for Gusty Outflow Winds and Dry Lightning...

. SUNDAY NIGHT ...

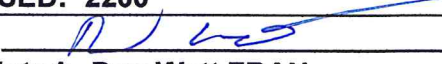
Sky/weather.....Mostly cloudy with a 30 percent chance of thunderstorms.
 Min temperature.....60-67.
 Max humidity.....40-45 percent.
 Wind (20 ft).....Southeast 3-6 mph. Wind gusty and erratic near thunderstorms.
 CWR.....0 percent.
 LAL.....6.
 Mixing height.....Lowering to around 1000 ft AGL.
 Transport winds.....Southeast around 6 mph.
 Marine layer.....Around 800 ft.

...Red Flag Warning in effect for Gusty Outflow Winds and Dry Lightning...

. MONDAY ...

Sky/weather.....Partly cloudy with a 30 percent of thunderstorms in the morning
 Max temperature.....Highs 79-84.
 Min humidity.....30-38 percent.
 Wind (20 ft).....Southeast 3-7 mph. Winds gusty and erratic near thunderstorms.
 CWR.....10 percent.
 LAL.....6.
 Mixing height.....Increasing to around 6000 ft AGL.
 Transport winds.....Southeast around 20 mph.
 Marine layer.....Less than 500 ft.

FIRE BEHAVIOR FORECAST

FORECAST NUMBER: 7	TYPE OF FIRE: Wildfire
FIRE NAME: River	OPERATIONAL PERIOD: 8/23-24/20 0700-0700
DATE ISSUED: 8/22/20	TIME ISSUED: 2200
UNIT: BEU – San Benito Monterey	SIGNED: 
	Typed/printed: Don Watt FBAN

INPUTS

WEATHER SUMMARY:

Red Flag Warning for Gusty Outflow Winds and Dry Lightning in Effect From 5 am Sunday through 5 pm Monday

The weather will continue to be warm and dry through today, maximum temperatures 84-88 degrees and a minimum humidity of 20-25 percent. The winds will be southeast 3-8 mpg with erratic gusts 40-65 mph near thunderstorms, during the day and overnight. LAL 6 through the day and night. See the weather briefing for more details.

OUTPUTS

FIRE BEHAVIOR

GENERAL:

The wind will continue to transition today from south to southwest to southeast as the low pressure moves into the area. This transition in wind will come into alignment with different drainages as it continues to transition. The wind will not be as strong, less than what has been experienced the past several days. However, there is the possibility for collapsing cells resulting in outflow boundaries, increase wind speeds in all directions. The incoming weather system is predicted to bring dry lightning to the area, refer to the safety message on what to do for lightning in the fire area. Have a plan if a new fire starts in the area or spot fires, it may impact you on the line, have escape routes identified.

SPECIFIC:

The fire in in Division D will have wind pushing the fire towards Carmel Valley Road to the west. There are two drainages which run east and west which will funnel the winds throughout the day, increasing the rate of spread to the west. The west side of the fire will have wind across the line for the entire shift. If a spot or new fire occurs on the ridges in Division L on the northern portion of Division I it will spread rapidly. Unburned fuel near the line has the potential to become active again, and potentially re-burn if a heat source is present. There are numerous homes in the Corral de Tierra Road and the San Benancio Road which would be impacted in a very short period of time.

AIR OPERATIONS

The smoke impacts from other fires will be reduced today, but may be limited due to inclement weather conditions.

SAFETY

- Lightning will be moving into the area today, refer to the safety message and have a plan for when it arrives in the area.
- The wind will be changing throughout the day along with an increasing unstable environment, continue to watch the weather conditions in the area you are assigned and surrounding areas.

ASSIGNMENT LIST (ICS 204 WF)

CONTROLLED UNCLASSIFIED
INFORMATION//BASIC

1. Incident Name: <p style="text-align: center;">RIVER ZONE</p>	2. Operational Period: Date From: 08/23/20 Date To: 08/24/20 Time From: 0700 Time To: 0700	3. Branch Division <p style="text-align: center;">I P</p> <p style="text-align: center;">Page 1 of 1 Papa</p>
--	---	--

4. Operations Personnel:	
Operations Section Chief: Mike Wink	Night Ops: Polo Rodriguez
Branch Director: Kevin Patton	Branch Safety: Josh Zazier / Robert McClellan (T)
Division/Group Supervisor: Mike Deponce (1521C)	Air Attack:

5. Resources Assigned:	** Resources Below in Bold are 12 Hour **						
Resource Identifier	ALS	OFR	Leader	Personnel	Request #	Hours	Reporting Location
STA TBD						0700-0700	DP60
STC XSB 1521C		R	Mike Deponce	20	E-271	0700-0700	DP60
STC TBD						0700-0700	DP60
ENG BEU 4669		R	Jacob Rood	3	E-245	0700-0700	DP60
ENG BEU 4675		R	Chris Gannon	3	E-244	0700-0700	DP60
ENG BEU 4686		R	Matt Johnson	4	E-243	0700-0700	DP60
CRW1 GAB 2		R		15		0700-0700	DP60
STL FKU 9437L		R	Ian Bianchi	5	E279	0700-0700	DP60
DOZ TBD						0700-0700	DP60
WT PVT E-75		R	Tim Ayares	2	E-75	0700-0700	DP60
WT PVT E-78		C	Clint Hayes	1	E-78	0700-1900	DP60
WT TBD						0700-0700	DP60
WT TBD						0700-0700	DP60
HEQB TBD						0700-0700	DP60

6. Work Assignments:
 Hold fire within established Control lines.
 Identify suppression repair needs.
 Mop up around structures within fire perimeter.

7. Special Instructions:
 One resource per Branch identified for immediate surge and new fire starts. Surge resource will be identified by **.

8. Communications							
Name	Ch	Function	Rx Freq	Rx Tone	Tx Freq	Tx Tone	Notes
NIFC C5	1	COMMAND	169.7500N	146.2 (T5)	167.1000N	146.2 (T5)	TONE 5/LOWER TORO
CDF T29	6	TACTICAL	151.3475	192.8 (T16)	151.3475	192.8 (T16)	
CDF T19	14	AIR TO GRD	159.3600	192.8 (T16)	159.3600	192.8 (T16)	Air to Ground
CALCORD	15	MEDICAL	156.0750N	156.7 (T6)	156.0750N	156.7 (T6)	
GUARD	16	AIRGUARD	168.6250N		168.6250N	110.9 (T1)	EMERGENCY ONLY

9. Prepared by: Name: Jordan Weber RESL(T)
 Signature:
ICS 204 Date/Time: 8/22/2020 2200 Personnel Count: 53

ASSIGNMENT LIST (ICS 204 WF)

CONTROLLED UNCLASSIFIED
INFORMATION//BASIC

1. Incident Name: RIVER ZONE	2. Operational Period: Date From: 08/23/20 Date To: 08/24/20 Time From: 0700 Time To: 0700	3. Branch Division I A Page 1 of 1 Alpha
---	---	---

4. Operations Personnel: Operations Section Chief: Mike Wink Branch Director: Kevin Patton Division/Group Supervisor: Chris Campagan (2830A)	Night Ops: Polo Rodriguez Branch Safety: Josh Zazier / Robert McClellan (T) Air Attack:
---	---

5. Resources Assigned:		** Resources Below in Bold are 12 Hour **						
Resource Identifier	ALS	OFR	Leader	Personnel	Request #	Hours	Reporting Location	
STA XSM 2276A		R	Jake Pelk	22	E-45	0700-0700	Lime Kiln x River Rd	
STA OES 2803A		R	Chris Champagna	16	E-42	0700-0700	Lime Kiln x River Rd	
STC TBD						0700-0700	Lime Kiln x River Rd	
STF TBD						0700-0700	Lime Kiln x River Rd	
STF TBD						0700-0700	Lime Kiln x River Rd	
STG TBD						0700-0700	Lime Kiln x River Rd	
CRW T2 TBD						0700-0700	Lime Kiln x River Rd	
CRW T2 TBD						0700-0700	Lime Kiln x River Rd	
DOZ PVT E-49		R	Jesse Clotey	2	E-49	0700-0700	Lime Kiln x River Rd	
DOZ PVT E-257		R	John Ricker	1	E-257	0700-1900	Lime Kiln x River Rd	
DOZ TBD						0700-0700	Lime Kiln x River Rd	
WT MCF 5541		R	Justin Reyes	2	E-189	0700-0700	Lime Kiln x River Rd	
WT MCF 5542		R		2	E-189	0700-0700	Lime Kiln x River Rd	
WT PVT E-15		R	Dion Gussner	1	E-15	0700-1900	Lime Kiln x River Rd	
WT TBD						0700-0700	Lime Kiln x River Rd	
WT TBD						0700-0700	Lime Kiln x River Rd	
HEQB TBD						0700-0700	Lime Kiln x River Rd	
HEQB TBD						0700-0700	Lime Kiln x River Rd	

6. Work Assignments:
 Improve direct fire line. Mop up 300' in from control line.
 Construct control lines as direct as possible.
 Hold fire in Planned lines.
 widen and improve existing control lines.

7. Special Instructions:
 Lots of fingers down to the dozer line. All green pockets need to have direct line established or fired out.

 One resource per Branch identified for immediate surge and new fire starts. Surge resource will be identified by **.

8. Communications							
Name	Ch	Function	Rx Freq	Rx Tone	Tx Freq	Tx Tone	Notes
NIFC C5	1	COMMAND	169.7500N	146.2 (T5)	167.1000N	146.2 (T5)	TONE 5//LOWER TORO
CDF T30	7	TACTICAL	151.3925	192.8 (T16)	151.3925	192.8 (T16)	
CDF T19	14	AIR TO GRD	159.3600	192.8 (T16)	159.3600	192.8 (T16)	Air to Ground
CALCORD	15	MEDICAL	156.0750N	156.7 (T6)	156.0750N	156.7 (T6)	
GUARD	16	AIRGUARD	168.6250N		168.6250N	110.9 (T1)	EMERGENCY ONLY

9. Prepared by: Name:	Jordan Weber	RESL(T)	Signature:
ICS 204	Date/Time: 8/22/2020	2200	Personnel Count: 46

ASSIGNMENT LIST (ICS 204 WF)

CONTROLLED UNCLASSIFIED
INFORMATION//BASIC

1. Incident Name: RIVER ZONE	2. Operational Period: Date From: 08/23/20 Date To: 08/24/20 Time From: 0700 Time To: 0700	3. Branch Division I D
---	---	---

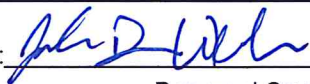
4. Operations Personnel:		Page 1 of 2 Delta
Operations Section Chief: Mike Wink	Night Ops: Polo Rodriguez	
Branch Director: Kevin Patton	Branch Safety: Josh Zazier / Robert McClellan (T)	
Division/Group Supervisor: Josh Campbell (9431C)	Air Attack:	

5. Resources Assigned:	** Resources Below in Bold are 12 Hour **						
Resource Identifier	ALS	OFR	Leader	Personnel	Request #	Hours	Reporting Location
STC MVU 9332C**		R	Jerney Salizzoni	17	E-27	0700-0700	Fairview x River Rd.
STC FKU 9431C		R	Josh Campbell	16	E-26	0700-0700	Fairview x River Rd.
STC TBD						0700-0700	Fairview x River Rd.
STF TBD						0700-0700	Fairview x River Rd.
STF TBD						0700-0700	Fairview x River Rd.
STG TBD						0700-0700	Fairview x River Rd.
STG TBD						0700-0700	Fairview x River Rd.
CRW VNC 11		R	Brian Heath	20	C-5	0700-1900	Fairview x River Rd.
CRW TBD		R				0700-0700	Fairview x River Rd.
STL MMU 9429L		R	Joey Felix	5	E-20	0700-0700	Fairview x River Rd.
STL TCU 9448L		R	Eric Nelson	10	E-22	0700-0700	Fairview x River Rd.
DOZ SCU 1645		R		1	E-154	0700-0700	Fairview x River Rd.
DOZ PVT E-32		R		2	E-32	0700-0700	Fairview x River Rd.
DOZ PVT E-33		R	Bob Noble	2	E-33	0700-0700	Fairview x River Rd.
DOZ PVT E-34		R		2	E-34	0700-0700	Fairview x River Rd.
DOZ PVT E-36		R	Jim Dunlap	2	E-36	0700-0700	Fairview x River Rd.
DOZ PVT E-47		R	Travis O'Farill	2	E-47	0700-0700	Fairview x River Rd.
DOZ PVT E-63		C	Chael Dusi	2	E-63	0700-0700	Fairview x River Rd.

6. Work Assignments:
 Hold and Improve control lines.
 Construct control lines as direct as possible.
 Prepare for firing operation.
 Tactical Patrol Around Structures

7. Special Instructions:
 One resource per Branch identified for immediate surge and new fire starts. Surge resource will be identified by **.
 Construct line along the toe of the slope heading towards Arroyo Seco Rd.

8. Communications							
Name	Ch	Function	Rx Freq	Rx Tone	Tx Freq	Tx Tone	Notes
NIFC C5	1	COMMAND	169.7500N	146.2 (T5)	167.1000N	146.2 (T5)	TONE 5//LOWER TORO
CDF T31	8	TACTICAL	159.3825	192.8 (T16)	159.3825	192.8 (T16)	
CDF T19	14	AIR TO GRD	159.3600	192.8 (T16)	159.3600	192.8 (T16)	Air to Ground
CALCORD	15	MEDICAL	156.0750N	156.7 (T6)	156.0750N	156.7 (T6)	
GUARD	16	AIRGUARD	168.6250N		168.6250N	110.9 (T1)	EMERGENCY ONLY

9. Prepared by: Name: Jordan Weber RESL(T)
 Signature: 

ICS 204 Date/Time: 8/22/2020 2200 Personnel Count: 81

ASSIGNMENT LIST (ICS 204 WF)

CONTROLLED UNCLASSIFIED
INFORMATION/BASIC

1. Incident Name: RIVER ZONE	2. Operational Period: Date From: 08/23/20 Date To: 08/24/20 Time From: 0700 Time To: 0700	3. Branch Division II F
---	---	--

4. Operations Personnel: Page 1 of 1 **Foxtrot**

Operations Section Chief: Mike Wink	Night Ops: Polo Rodriguez
Branch Director: Aaron Latta	Branch Safety:
Division/Group Supervisor: Ron Busch (2376C)	Air Attack:

5. Resources Assigned:	** Resources Below in Bold are 12 Hour **						
Resource Identifier	ALS	OFR	Leader	Personnel	Request #	Hours	Reporting Location
STC CDC 0803C		R	Brad Medvin	16	E-55	0700-0700	DP 25
STC XSN 2376C		R	Ron Busch	21	E-54	0700-0700	DP 25
STG MVU 9339G		R	Zachary Oneill	31	C-11	0700-0700	DP 25
STG TBD						0700-0700	DP 25
CRW T2 TBD						0700-0700	DP 25
STL TBD						0700-0700	DP 25
DOZ RRU 3142		C	Edward Conwell	1	E-115	0700-0700	DP 25
DOZ PVT E-31		R	Mike Dolling	2	E-31	0700-0700	DP 25
DOZ PVT E-48		R	Travis, O'farill	2	E-48	0700-0700	DP 25
WT PVT E-72		C	Glen Laquaglia	2	E-72	0700-0700	DP 25
WT PVT E-129		R	Keith Curry	1	E-129	0700-1900	DP 25
WT PVT E-263		R	Jarred Reules	3	E-253	0700-0700	DP 25
HEQB TBD						0700-0700	DP 25
HEQB TBD						0700-0700	DP 25
FALM O-297		R	Ryan Deniz	1	O-297	0700-1900	DP 25
FOBS BERRYMAN		R	Theodore Berryman	1	O-259	0700-1900	DP 25
FEMT BUSBY		R	Kye Busby	1	O-225	0700-0700	DP 25
FEMT DAUNIS		R	Shane Daunis	1	O-234	0700-0700	DP 25
REMS MORONGO		R		2	O-374	0700-1900	DP 25

6. Work Assignments:
Mop up 300' in from control line.
Hold and Improve control lines.
Prepare to construct secondary control lines.
Hold fire in Planned lines.

7. Special Instructions:
One resource per Branch identified for immediate surge and new fire starts. Surge resource will be identified by **.

Construct line alog East Carmel Valley Rd. towards River Rd.

8. Communications

Name	Ch	Function	Rx Freq	Rx Tone	Tx Freq	Tx Tone	Notes
NIFC C5	1	COMMAND	169.7500N	146.2 (T5)	167.1000N	146.2 (T5)	TONE 5/LOWER TORO
CDF T24	9	TACTICAL	151.3325	192.8 (T16)	151.3325	192.8 (T16)	
CDF T19	14	AIR TO GRD	159.3600	192.8 (T16)	159.3600	192.8 (T16)	Air to Ground
CALCORD	15	MEDICAL	156.0750N	156.7 (T6)	156.0750N	156.7 (T6)	
GUARD	16	AIRGUARD	168.6250N		168.6250N	110.9 (T1)	EMERGENCY ONLY

9. Prepared by: Name: Jordan Weber RESL(T)

Signature:

ICS 204 Date/Time: 8/22/2020 2200 Personnel Count: 83

ASSIGNMENT LIST (ICS 204 WF)

CONTROLLED UNCLASSIFIED
INFORMATION//BASIC

1. Incident Name: <p style="text-align: center; font-weight: bold;">RIVER ZONE</p>		2. Operational Period: Date From: 08/23/20 Date To: 08/24/20 Time From: 0700 Time To: 0700				3. Branch Division <p style="text-align: center; font-size: 2em;">II I</p>	
4. Operations Personnel:		Page 1 of 1		India			
Operations Section Chief: Mike Wink			Night Ops: Polo Rodriguez				
Branch Director: Aaron Latta			Branch Safety:				
Division/Group Supervisor: Christian Jauragui (9460C)			Air Attack:				
5. Resources Assigned:		** Resources Below in Bold are 12 Hour **					
Resource Identifier	ALS	OFR	Leader	Personnel	Request #	Hours	Reporting Location
STC BEU 9460C		R	Chris Jauregui	17	E-25	0700-0700	33900 Carmel Valley Rd
STF TBD						0700-0700	33900 Carmel Valley Rd
STG SLU 9346G		R	Enrique Ornalas	30	C-7	0700-0700	33900 Carmel Valley Rd
CRW T2 TBD						0700-0700	33900 Carmel Valley Rd
CRW T2 TBD						0700-0700	33900 Carmel Valley Rd
DOZ PVT E-171		R	Erik Roen	2	E-171	0700-0700	33900 Carmel Valley Rd
DOZ PVT E-319		R	Pete Van Goale	2	E-319	0700-0700	33900 Carmel Valley
DOZ TBD						0700-0700	33900 Carmel Valley
WT CYP 25		R		2		0700-0700	33900 Carmel Valley
WT PVT E-316		R	Keegan Gunderson	1	E-316	0700-1900	33900 Carmel Valley
WT PVT E-318		R	John Barton	1	E-318	0700-1900	33900 Carmel Valley
WT TBD						0700-0700	33900 Carmel Valley
GRD PVT E-251		R	Tanner Rhoads	1	E-251	0700-1900	33900 Carmel Valley
HEQB PERKINS		R	Tyson Perkins	1	O-294	0700-0700	33900 Carmel Valley
HEQB CHILDERS		R	Wyatt Childers	1	O-296	0700-0700	33900 Carmel Valley
6. Work Assignments: Mop up 300' in from control line. Hold and Improve control lines. Identify suppression repair needs. Prepare to construct secondary control lines.							
7. Special Instructions: One resource per Branch identified for immediate surge and new fire starts. Surge resource will be identified by **.							
8. Communications							
Name	Ch	Function	Rx Freq	Rx Tone	Tx Freq	Tx Tone	Notes
NIFC C5	1	COMMAND	169.7500N	146.2 (T5)	167.1000N	146.2 (T5)	TONE 5/LOWER TORO
CDF T34	10	TACTICAL	151.4675	192.8 (T16)	151.4675	192.8 (T16)	
CDF T19	14	AIR TO GRD	159.3600	192.8 (T16)	159.3600	192.8 (T16)	Air to Ground
CALCORD	15	MEDICAL	156.0750N	156.7 (T6)	156.0750N	156.7 (T6)	
GUARD	16	AIRGUARD	168.6250N		168.6250N	110.9 (T1)	EMERGENCY ONLY
9. Prepared by: Name:		Jordan Weber		RESL(T)		Signature:	
ICS 204	Date/Time: 8/22/2020 2200			Personnel Count: 58			

ASSIGNMENT LIST (ICS 204 WF)

CONTROLLED UNCLASSIFIED
INFORMATION//BASIC

1. Incident Name: <p style="text-align: center; font-weight: bold;">RIVER ZONE</p>	2. Operational Period: Date From: 08/23/20 Date To: 08/24/20 Time From: 0700 Time To: 0700	3. Branch Division <p style="text-align: center; font-size: 2em; font-weight: bold;">II L</p> <p style="text-align: center;">Page 1 of 1 Lima</p>
--	---	--

4. Operations Personnel:	
Operations Section Chief: Mike Wink	Night Ops: Polo Rodriguez
Branch Director: Aaron Latta	Branch Safety:
Division/Group Supervisor: Preston Fouts (9331C)	Air Attack:

5. Resources Assigned:		** Resources Below in Bold are 12 Hour **						
Resource Identifier	ALS	OFR	Leader	Personnel	Request #	Hours	Reporting Location	
STC XTB 4230C		R	John McClellan	21	E-30	0700-0700	ICP	
STC MVU 9331C**		R	Preston Fouts	17	E-19	0700-0700	ICP	
STG TBD						0700-0700	ICP	
STG TBD						0700-0700	ICP	
STL TBD						0700-0700	ICP	
DOZ PVT E-52		R	Thomas Wilson	2	E-52	0700-0700	ICP	
DOZ TBD						0700-0700	ICP	
DOZ TBD						0700-0700	ICP	
WT PVT E-77		C	Steve Smith	1	E-77	0700-1900	ICP	
WT PVT E-140		R	Dale Evenson	1	E-140	0700-1900	ICP	
WT PVT E-266		R	Nile Hanscom	1	E-266	0700-1900	ICP	
WT TBD						0700-0700	ICP	
GRD PVT E-252		R	Carlton Cooper	1	E-252	0700-1900	ICP	
FALM O-468		R	Turnpin	1	O-468	0700-1900	ICP	
FALM O-487		R	Ryan Guay	2	O-487	0700-1900	ICP	
FEMT RHODES		R	Curt Rhodes	1	O-222	0700-0700	ICP	

6. Work Assignments:
Mop up 300' in from control line.
Hold and Improve control lines.
fall hazard trees and trees that threaten control lines.
Identify additional needs.

7. Special Instructions:
One resource per Branch identified for immediate surge and new fire starts. Surge resource will be identified by **.

8. Communications							
Name	Ch	Function	Rx Freq	Rx Tone	Tx Freq	Tx Tone	Notes
NIFC C5	1	COMMAND	169.7500N	146.2 (T5)	167.1000N	146.2 (T5)	TONE 5//LOWER TORO
CDF T35	11	TACTICAL	159.3225	192.8 (T16)	159.3225	192.8 (T16)	
CDF T19	14	AIR TO GRD	159.3600	192.8 (T16)	159.3600	192.8 (T16)	Air to Ground
CALCORD	15	MEDICAL	156.0750N	156.7 (T6)	156.0750N	156.7 (T6)	
GUARD	16	AIRGUARD	168.6250N		168.6250N	110.9 (T1)	EMERGENCY ONLY

9. Prepared by: Name: Jordan Weber RESL(T)
Signature:

ICS 204 Date/Time: 8/22/2020 2200 Personnel Count: 48

ICS 205 - INCIDENT RADIO COMMUNICATIONS PLAN


1. Incident Name: RIVER ZONE
Incident Channels

2. Date/Time Prepared Date: 08/22/2020 Time: 2230
3. Operational Period: Date From: 08/23/20 Date To: 08/24/20
 Time From: 0700 Time To: 0700

4. Communications


Ch#	Function	Name	Assigned To	Rx Freq	Rx Tone	Tx Freq	Tx Tone	Notes
1	COMMAND	NIFC C5	RIVER ZONE	169.7500N	146.2 (T5)	167.1000N	146.2 (T5)	TONE 5/LOWER TORO
2	COMMAND	NIFC C12	RIVER ZONE	173.0375	146.2 (T5)	167.3250	146.2 (T5)	TONE 5/EASTSIDE
3	COMMAND	NIFC C8	RIVER ZONE	169.5375N	146.2 (T5)	164.7125N	146.2 (T5)	TONE 5/PALO ESCRITO
4								
5	COMMAND	NIFC C32	**CARMEL ZONE**	171.0875	146.2 (T5)	164.0125	146.2 (T5)	TONE 5/**ROBERTS KNOLL**
6	TACTICAL	CDF T29	DIV P	151.3475	192.8 (T16)	151.3475	192.8 (T16)	
7	TACTICAL	CDF T30	DIV A	151.3925	192.8 (T16)	151.3925	192.8 (T16)	
8	TACTICAL	CDF T31	DIV D	159.3825	192.8 (T16)	159.3825	192.8 (T16)	
9	TACTICAL	CDF T24	DIV F	151.3325	192.8 (T16)	151.3325	192.8 (T16)	
10	TACTICAL	CDF T34	DIV I	151.4675	192.8 (T16)	151.4675	192.8 (T16)	
11	TACTICAL	CDF T35	DIV L	159.3225	192.8 (T16)	159.3225	192.8 (T16)	
12	TACTICAL	CDF T36	CONTINGENCY	151.1525	192.8 (T16)	151.1525	192.8 (T16)	
13	TACTICAL	CDF T37	STRUCTURE GRP	159.3375	192.8 (T16)	159.3375	192.8 (T16)	
14	AIR TO GRD	CDF T19	ALL DIVS	159.3600	192.8 (T16)	159.3600	192.8 (T16)	Air to Ground
15	MEDICAL	CALCORD	ALL DIVS	156.0750N	156.7 (T6)	156.0750N	156.7 (T6)	
16	AIRGUARD	GUARD	ALL DIVS	168.6250N		168.6250N	110.9 (T1)	EMERGENCY ONLY
17								
18								
19								
20	AIRGUARD	GUARD	ALL DIVS	168.6250N		168.6250N	110.9 (T1)	EMERGENCY ONLY

5. Special Instructions
 VER 3= 8/20/2020

6. Prepared by (Communications Unit Leader): Name: CORY COSTA COML(T)
 Signature: 
 NIMS IAP Date/Time: 08/22/20 2230

CARMEL ZONE

ORGANIZATION ASSIGNMENT LIST (ICS 203)

1. Incident Name: CARMEL ZONE		2. Operational Period: Date From: 8/23/2020 Time From: 0700		Date To: 8/24/2020 Time To: 0700	
3. Incident Commander(s) and Command Staff:			7. Operation Section:		
IC/UC's	Nick Truax, George Huang (T)		Operations	Mike Wink	
Deputy	Greg Bertelli		Deputy Operations	Tony Brownell	
Safety Officer	Dennis Lange, Brad Niven (T)		Night Ops	Polo Rodriguez	
Information Officer	Emily Smith, Isaac Sanchez (T)		Staging Area		
Liaison Officer	Brandon Smith, Brandon Gunn (T)		Branch	XI	Merrick Fields
4. Agency/Organization Representatives:			Division/Group	AA	Ronald Laff
Agency/Organization	Name		Division/Group	KK	Nolan Hale
Monterey Regional Fire	Michael Urquides		Division/Group		
CAL OES	David Franklin		Division/Group		
Monterey CO SO	Jason Smith		Division/Group		
CHP	Kyle Foster		Branch	XV	Mike Petro (T)
Monterey County OES	Kelsey Scanlon		Division/Group	OO	Robert Edwards
Red Cross	Patsi Gasca		Division/Group	QQ	William Bryant (9311C)
CCC	Miguel Diaz		Division/Group		
PG&E	Geoff Money		Division/Group		
Monterey Farm Bureau	Norm Groot		Division/Group		
Monterey County Parks	Micah Beardsall		Staging Area		
BLM	Dave Slibsager		Division/Group		
US Forest Service	Trenton Pins		Division/Group		
CA American Water	Albert Sanchez		Division/Group		
CDCR	Micheal Nilsson		Division/Group		
Monterey County SPCA	Rosanna Leighton		Division/Group		
			Branch	CARMEL CONT	TBD
			Division/Group		
5. Planning Section:			Division/Group		
Chief	Chris Carrera		Division/Group		
Deputy	Chris Reneau		Division/Group		
Resource Unit	Paul Carlos, BJ Corey, Jordan Weber (T)		Division/Group		
Situation Unit	Rob DeCamp, Matt Thau (T)		Branch		
Documentation Unit	Janet Arthur		Division/Group		
Demobilization Unit	Ryan Villarino		Division/Group		
GISS	Suzann Leiningner, Eric Scovel (T)		Division/Group		
FBAN	Don Watt		Division/Group		
IMET	James Dudley		Division/Group		
Training Tech Spec	Dave Randolph		Air Operations Branch		Director: Matt Hill
			Air Support Group Supervisor		Thomas Smith
			Air Tactical Group Supervisor		
6. Logistics Section			Helibase Manager		Peter York
Chief	Jesse Morris, Craig White				
Supply Unit	Lon Story, Mat Brabo (T)		8. Finance/Administration Section:		
Facilities Unit	Jacob Guerra, Travis Heard		Chief	Jack Franklin	
Ground Support Unit	Pete Mock, Michael Darcy		Deputy	Bob Counts	
Communications Unit	Tom Webb		Time Unit	Shannon Thompson, Al DaSilva (T)	
Medical Unit	Raice Wicklas		Procurement Unit	Tim Myer, Matt Rueckheim (T)	
Food Unit	David Jones		Comp/Claims Unit	Alyssa Hagerman	
Accommodations	Matt Aldrich		Cost Unit	Suzi Cain	
Prepared By: Name:	Chris Reneau	Position/Title:	DPSC	Signature:	
ICS 203		Date/Time:	8/22/2020 1900		



INCIDENT Weather Forecast



FORECAST NO: 4
 PREDICTION FOR: 24 Hour Shift
 SHIFT DATE: 08/23/20
 TIME AND DATE
 FORECAST ISSUED: 1900 on 08/22/20

NAME OF FIRE: Carmel
 UNIT: Cal Fire CA-BEU
 SIGNED: *James B. Dudley*
 Jim Dudley Incident Meteorologist

...Red Flag Warning for Gusty Outflow Winds and Dry Lightning in Effect From 5 am Sunday through 5 pm Monday...

WEATHER DISCUSSION

A weather disturbance will move northward up the California coast Sunday bringing instability and enough sub-tropical moisture for the formation of thunderstorms with gusty and erratic outflow winds and dry lightning. **A Red Flag Warning is in effect from 0500 Sunday through 1700 Monday.** In addition, the weather disturbance will shift the winds over the fire to a south to southeast direction. The combination of the new wind direction and the potential for outflow winds from any thunderstorm that forms over the fire or moves through the fire area will make for a potentially dangerous gusty and strong wind situation. Outflow winds in previous thunderstorms have produced gusts to as much As 65 mph.

...Red Flag Warning in effect for Gusty Outflow Winds and Dry Lightning...

.SUNDAY...

Sky/weather.....Partly cloudy with a 30 percent of dry thunderstorms. Dry lightning is possible with little rain accumulation expected.
 Max temperature.....Highs 79-84.
 Min humidity.....30-35 percent.
 Wind (20 ft).....Southeast 3-8 mph. Winds erratic in direction and very strong with gusts of 40 to 65 mph possible near any thunderstorms.
 CWR.....0 percent.
 LAL.....6.
 Mixing height.....Increasing to around 6000 ft AGL.
 Transport winds.....Southeast to east 12 mph.
 Marine layer.....800 ft.

...Red Flag Warning in effect for Gusty Outflow Winds and Dry Lightning...

.SUNDAY NIGHT...

Sky/weather.....Mostly cloudy with a 30 percent chance of thunderstorms.
 Min temperature.....57-62.
 Max humidity.....50-60 percent.
 Wind (20 ft).....Southeast 3-6 mph. Wind gusty and erratic near thunderstorms.
 CWR.....0 percent.
 LAL.....6.
 Mixing height.....Lowering to around 1000 ft AGL.
 Transport winds.....Southeast around 6 mph.
 Marine layer.....Around 800 ft.

...Red Flag Warning in effect for Gusty Outflow Winds and Dry Lightning...

.MONDAY...

Sky/weather.....Partly cloudy with a 30 percent of thunderstorms in the morning
 Max temperature.....Highs 78-83.
 Min humidity.....33-39 percent.
 Wind (20 ft).....Southeast 3-7 mph. Winds gusty and erratic near thunderstorms.
 CWR.....10 percent.
 LAL.....6.
 Mixing height.....Increasing to around 6000 ft AGL.
 Transport winds.....Southeast around 20 mph.
 Marine layer.....Less than 500 ft.

FIRE BEHAVIOR FORECAST

FORECAST NUMBER: 5

TYPE OF FIRE: Wildfire

FIRE NAME: Carmel

OPERATIONAL PERIOD: 8/23-24/20 0700-0700

DATE ISSUED: 8/22/20

TIME ISSUED: 2200

UNIT: BEU – San Benito Monterey

SIGNED: _____

Typed/printed: Don Watt FBAN

INPUTS

WEATHER SUMMARY:

Red Flag Warning for Gusty Outflow Winds and Dry Lightning in Effect From 5 am Sunday through 5 pm Monday

The weather will continue to be warm and dry through today, maximum temperatures 79-84 degrees and a minimum humidity of 30-35 percent. The winds will be southeast 3-8 mpg with erratic gusts 40-65 mph near thunderstorms, during the day and overnight. **LAL 6** through the day and night. See the weather briefing for more details.

OUTPUTS

FIRE BEHAVIOR

GENERAL:

The wind will continue to transition today from south to southwest to southeast as the low pressure moves into the area. This transition in wind will come into alignment with different drainages as it continues to transition. The wind will not be as strong, less than what has been experienced the past several days. However, there is the possibility for collapsing cells resulting in outflow boundaries, increase wind speeds in all directions. The incoming weather system is predicted to bring dry lightning to the area, refer to the safety message on what to do for lightning in the fire area. Have a plan if a new fire starts in the area or spot fires, it may impact you on the line, have escape routes identified.

SPECIFIC:

The Carmel Fire is slightly more sheltered in most places, but will still feel the effects of the changing wind. If the fire was to spot to the south facing slope, across East Carmel Valley Road it will be exposed to the wind and spread rapidly. The west side of the fire will be mostly sheltered but will have strong winds if there are outflows from a collapsing cell. Areas of the fire which have been calm and sheltered from the wind in the previous days will start to increase activity, especially in the areas around the structures.

AIR OPERATIONS

The smoke impacts from other fires will be reduced today, but may be limited due to inclement weather conditions.

SAFETY

- Lightning will be moving into the area today, refer to the safety message and have a plan for when it arrives in the area.
- The wind will be changing throughout the day along with an increasing unstable environment, continue to watch the weather conditions in the area you are assigned and surrounding areas.

ASSIGNMENT LIST (ICS 204 WF)

CONTROLLED UNCLASSIFIED
INFORMATION/BASIC

1. Incident Name:	2. Operational Period:	3. Branch	Division
CARMEL ZONE	Date From: 08/23/20 Date To: 08/24/20 Time From: 0700 Time To: 0700	XI	AA

4. Operations Personnel:		Page 1 of 2	Alpha-Alpha
Operations Section Chief: Mike Wink	Night Ops: Polo Rodriguez		
Branch Director: Merrick Fields	Branch Safety: Timothy Irwin		
Division/Group Supervisor: Ronald Laff	Air Attack:		

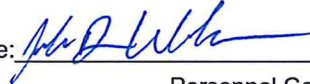
5. Resources Assigned:	** Resources Below in Bold are 12 Hour **					Hours	Reporting Location
Resource Identifier	ALS	OFR	Leader	Personnel	Request #		
STA XOR 1860A		C	Brian Mckonough	21	E-20	0700-0700	DP 115
STA OES 2802A		R	Dan Schindler	21	E-44	0700-0700	DP 115
STA TBD						0700-0700	DP 115
STC TBD						0700-0700	DP 115
STC TBD						0700-0700	DP 115
STC TBD						0700-0700	DP 115
STF TBD						0700-0700	DP 115
TF XIMC 6110		C	Cedric Censna	21	E-10	0700-0700	DP 115
T/F TBD						0700-0700	DP 115
STG SLU 9342G		C	Danny Richard	33	C-5	0700-0700	DP 115
STG TBD						0700-0700	DP 115
CRW TBD						0700-0700	DP 115
CRW TBD						0700-0700	DP 115
DOZ FHL 8892		C	Josh Blacksmith	2	E-71	0700-1900	DP 115
DOZ FHL 8893		C	James Kerenkel	2	E-87	0700-1900	DP 115
DOZ PVT E-40		C	Wade Smith	2	E-40	0700-0700	DP 115
DOZ PVT E-52		C	James Palmer	2	E-52	0700-0700	DP 115
DOZ PVT E-157		C	Konner Klouwer	2	E-157	0700-0700	DP 115

6. Work Assignments:
Mop up 100' In.
Hold and Improve control lines.
Construct control lines as direct as possible.
Implement progressive hoselays as needed.

7. Special Instructions:
Continue to mop up along Cachauga and Rdgeback Rd.

One resource per Branch identified for immediate surge and new fire starts. Surge resource will be identified by **.

8. Communications							
Name	Ch	Function	Rx Freq	Rx Tone	Tx Freq	Tx Tone	Notes
NIFC C31	1	COMMAND	172.5500N	146.2 (T5)	162.1875N	146.2 (T5)	TONE 5/CHEWS RIDGE
CDF T29	6	TACTICAL	151.3475	192.8 (T16)	151.3475	192.8 (T16)	
CDF T15	14	AIR TO GRD	159.2700	192.8 (T16)	159.2700	192.8 (T16)	Air to Ground
CALCORD	15	MEDICAL	156.0750N	156.7 (T6)	156.0750N	156.7 (T6)	
GUARD	16	AIRGUARD	168.6250N		168.6250N	110.9 (T1)	EMERGENCY ONLY

9. Prepared by: Name: Jordan Weber RESL (T)
Signature: 
ICS 204 Date/Time: 8/22/2020 2200 Personnel Count: 106

ASSIGNMENT LIST (ICS 204 WF)

CONTROLLED UNCLASSIFIED
INFORMATION/BASIC

1. Incident Name:	2. Operational Period:	3. Branch	Division
CARMEL ZONE	Date From: 08/23/20 Date To: 08/24/20 Time From: 0700 Time To: 0700	XI	KK

4. Operations Personnel:		Page 1 of 2	Kilo-Kilo
Operations Section Chief: Mike Wink	Night Ops: Polo Rodriguez		
Branch Director: Merrick Fields	Branch Safety: Timothy Irwin		
Division/Group Supervisor: Nolan Hale	Air Attack:		

5. Resources Assigned:		** Resources Below in Bold are 12 Hour **						
Resource Identifier	ALS	OFR	Leader	Personnel	Request #	Hours	Reporting Location	
STA OES 2804A		C	Eric Ceremony	21	E-12	0700-0700	Carmel Valley Rd. x Cachaugua Rd	
STA TBD						0700-0700	Carmel Valley Rd. x Cachaugua Rd	
STC TCU 9442C**		C	Brenden Brown	16	E-135	0700-0700	Carmel Valley Rd. x Cachaugua Rd	
STC TBD						0700-0700	Carmel Valley Rd. x Cachaugua Rd	
LPF E316		C	Richard Martin	3	E-5	0700-1900	Carmel Valley Rd. x Cachaugua Rd	
LPF E319		C	Andrew Kenner	3	E-6	0700-1900	Carmel Valley Rd. x Cachaugua Rd	
STG TBD						0700-0700	Carmel Valley Rd. x Cachaugua Rd	
CRW TBD						0700-0700	Carmel Valley Rd. x Cachaugua Rd	
CRW TBD						0700-0700	Carmel Valley Rd. x Cachaugua Rd	
CRW T2 TBD						0700-0700	Carmel Valley Rd. x Cachaugua Rd	
CRW T2 TBD						0700-0700	Carmel Valley Rd. x Cachaugua Rd	
DOZ BEU 4645		C	Jeff Tressler	2	E-17	0700-0700	Carmel Valley Rd. x Cachaugua Rd	
DOZ PVT E-35		R	Rodney Carlton	2	E-35	0700-0700	Carmel Valley Rd. x Cachaugua Rd	
DOZ PVT E-37							Carmel Valley Rd. x Cachaugua Rd	
DOZ PVT E-41		C	William Dunlap	2	E-41	0700-0700	Carmel Valley Rd. x Cachaugua Rd	
DOZ PVT E-66		C	Karsen Bennett	2	E-66	0700-0700	Carmel Valley Rd. x Cachaugua Rd	
DOZ PVT E-68		C	Kevin Dye	2	E-68	0700-0700	Carmel Valley Rd. x Cachaugua Rd	
DOZ PVT E-69		C	Mike Hauber	2	E-69	0700-0700	Carmel Valley Rd. x Cachaugua Rd	

6. Work Assignments:
Mop up 100' In.
hold fire within established control lines.
Tactical patrol around structures
construct and prepare for indirect fireline.

7. Special Instructions:
One resource per Branch identified for immediate surge and new fire starts. Surge resource will be identified by **.

8. Communications							
Name	Ch	Function	Rx Freq	Rx Tone	Tx Freq	Tx Tone	Notes
NIFC C31	1	COMMAND	172.5500N	146.2 (T5)	162.1875N	146.2 (T5)	TONE 5/CHEWS RIDGE
CDF T30	7	TACTICAL	151.3925	192.8 (T16)	151.3925	192.8 (T16)	
CDF T15	14	AIR TO GRD	159.2700	192.8 (T16)	159.2700	192.8 (T16)	Air to Ground
CALCORD	15	MEDICAL	156.0750N	156.7 (T6)	156.0750N	156.7 (T6)	
GUARD	16	AIRGUARD	168.6250N		168.6250N	110.9 (T1)	EMERGENCY ONLY

9. Prepared by: Name: Jordan Weber RESL (T)
Signature:
ICS 204 Date/Time: 8/22/2020 2200 Personnel Count: 55

ASSIGNMENT LIST (ICS 204 WF)

CONTROLLED UNCLASSIFIED
INFORMATION//BASIC

1. Incident Name:	2. Operational Period:	3. Branch	Division
CARMEL ZONE	Date From: 08/23/20 Date To: 08/24/20 Time From: 0700 Time To: 0700	XI	KK

4. Operations Personnel:		Page 2 of 2	Kilo-Kilo
Operations Section Chief: Mike Wink	Night Ops: Polo Rodriguez		
Branch Director: Merrick Fields	Branch Safety: Timothy Irwin		
Division/Group Supervisor: Nolan Hale	Air Attack:		

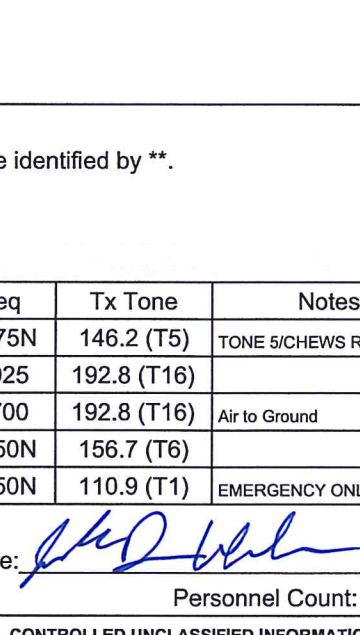
5. Resources Assigned:		** Resources Below in Bold are 12 Hour **						
Resource Identifier	ALS	OFR	Leader	Personnel	Request #	Hours	Reporting Location	
DOZ PVT E-97		C	Bo Rowling	2	E-97	0700-0700	Carmel Valley Rd. x Cachaugua Rd	
DOZ PVT E-114		C	Zach Variun	2	E-114	0700-0700	Carmel Valley Rd. x Cachaugua Rd	
DOZ PVT E-176		R	Vic Calanchini	2	E-176	0700-0700	Carmel Valley Rd. x Cachaugua Rd	
DOZ PVT E-260		C	Mike Hauber	1	E-260	0700-1900	Carmel Valley Rd. x Cachaugua Rd	
WT PVT E-73		C	Randy Wilber	1	E-73	0700-1900	Carmel Valley Rd. x Cachaugua Rd	
WT PVT E-79		C	Louis Comes	1	E-79	0700-1900	Carmel Valley Rd. x Cachaugua Rd	
WT PVT E-82		C	Russ Hurl	2	E-82	0700-0700	Carmel Valley Rd. x Cachaugua Rd	
WT PVT E-101		C	Albert Angulo	1	E-101	0700-1900	Carmel Valley Rd. x Cachaugua Rd	
WT PVT E-119		C	Anthony Garcia	1	E-119	0700-1900	Carmel Valley Rd. x Cachaugua Rd	
WT PVT E-160		C	Jeff Drew	1	E-160	0700-1900	Carmel Valley Rd. x Cachaugua Rd	
HEQB ULWELLING		R	Ulwelling, Eric		O-176	0700-0700	Carmel Valley Rd. x Cachaugua Rd	
HEQB TBD						0700-0700	Carmel Valley Rd. x Cachaugua Rd	
HEQB TBD						0700-0700	Carmel Valley Rd. x Cachaugua Rd	
HEQB TBD						0700-0700	Carmel Valley Rd. x Cachaugua Rd	
FALM O-113		C	Christian	2	O-113	0700-1900	Carmel Valley Rd. x Cachaugua Rd	
FALM O-115		C	Volcano Creek Ent.	2	O-115	0700-1900	Carmel Valley Rd. x Cachaugua Rd	
FEMT ARTHUR		R	Eric Arthur	1	O-223	0700-0700	Carmel Valley Rd. x Cachaugua Rd	
FEMT HARRIS		R	Grant Harris	1	O-226	0700-0700	Carmel Valley Rd. x Cachaugua Rd	
AMB MEDIC 5563		C		2	E-291	0700-1900	Carmel Valley Rd. x Cachaugua Rd	

6. Work Assignments:
Mop up 100' In.
hold fire within established control lines.
Tactical patrol around structures
construct and prepare for indirect fireline.

7. Special Instructions:
One resource per Branch identified for immediate surge and new fire starts. Surge resource will be identified by **.

8. Communications

Name	Ch	Function	Rx Freq	Rx Tone	Tx Freq	Tx Tone	Notes
NIFC C31	1	COMMAND	172.5500N	146.2 (T5)	162.1875N	146.2 (T5)	TONE 5/CHEWS RIDGE
CDF T30	7	TACTICAL	151.3925	192.8 (T16)	151.3925	192.8 (T16)	
CDF T15	14	AIR TO GRD	159.2700	192.8 (T16)	159.2700	192.8 (T16)	Air to Ground
CALCORD	15	MEDICAL	156.0750N	156.7 (T6)	156.0750N	156.7 (T6)	
GUARD	16	AIRGUARD	168.6250N		168.6250N	110.9 (T1)	EMERGENCY ONLY

9. Prepared by: Name: Jordan Weber RESL (T)
Signature: 

ICS 204 Date/Time: 8/22/2020 2200 Personnel Count: 20

ASSIGNMENT LIST (ICS 204 WF)

CONTROLLED UNCLASSIFIED
INFORMATION//BASIC

1. Incident Name: CARMEL ZONE	2. Operational Period: Date From: 08/23/20 Date To: 08/24/20 Time From: 0700 Time To: 0700	3. Branch Division XV OO Page 1 of 2 Oscar-Oscar
--	---	---

4. Operations Personnel:	
Operations Section Chief: Mike Wink	Night Ops: Polo Rodriguez
Branch Director: Mike Petro (T)	Branch Safety: Timothy Irwin
Division/Group Supervisor: Robert Edwards	Air Attack:

5. Resources Assigned:		** Resources Below in Bold are 12 Hour **					
Resource Identifier	ALS	OFR	Leader	Personnel	Request #	Hours	Reporting Location
STA TBD						0700-0700	TBD
STA TBD						0700-0700	TBD
STC BDU 9352C		C	Travis Thogmartin	21	E-15	0700-0700	TBD
STC MMU 9423C**		C	Mike Mills	16	E-1	0700-0700	TBD
STF XMA 5075F		C	Craig Waag	11	E-2	0700-0700	TBD
ENG MCF 5532		R		3		0700-0700	TBD
ENG MCR 5534		C		3		0700-0700	TBD
ENG CFC 7731		C		3		0700-0700	TBD
ENG CFC 7732		C		3	E-45	0700-0700	TBD
ENG6 CFC P7751		C				0700-0700	TBD
STG SLU 9343G		C	Alan Meyerink	32	C-3	0700-0700	TBD
STG TBD						0700-0700	TBD
STG TBD						0700-0700	TBD
CRW T2 TBD						0700-0700	TBD
STL MVU 9335L		C	Jose Galeano	8	E-13	0700-0700	TBD
STL SLU 9348L		C	Damien Juarez	6	E-14	0700-0700	TBD
DOZ PVT E-42		C	Gary Whitney	2	E-42	0700-0700	TBD
DOZ PVT E-51		R	Travis Coleman	3	E-51	0700-0700	TBD

6. Work Assignments:
Mop up 300' in from control line.
Hold and Improve control lines.

7. Special Instructions:
One resource per Branch identified for immediate surge and new fire starts. Surge resource will be identified by **.

8. Communications							
Name	Ch	Function	Rx Freq	Rx Tone	Tx Freq	Tx Tone	Notes
NIFC C31	1	COMMAND	172.5500N	146.2 (T5)	162.1875N	146.2 (T5)	TONE 5/CHEWS RIDGE
CDF T37	13	TACTICAL	159.3375	192.8 (T16)	159.3375	192.8 (T16)	
CDF T15	14	AIR TO GRD	159.2700	192.8 (T16)	159.2700	192.8 (T16)	Air to Ground
CALCORD	15	MEDICAL	156.0750N	156.7 (T6)	156.0750N	156.7 (T6)	
GUARD	16	AIRGUARD	168.6250N		168.6250N	110.9 (T1)	EMERGENCY ONLY

9. Prepared by: Name:	Jordan Weber	RESL (T)	Signature:
ICS 204	Date/Time: 8/22/2020 2200	Personnel Count: 111	

ASSIGNMENT LIST (ICS 204 WF)

CONTROLLED UNCLASSIFIED
INFORMATION//BASIC

1. Incident Name:	2. Operational Period:	3. Branch	Division
CARMEL ZONE	Date From: 08/23/20 Date To: 08/24/20 Time From: 0700 Time To: 0700	XV	OO

Page 2 of 2 Oscar-Oscar

4. Operations Personnel:	
Operations Section Chief: Mike Wink	Night Ops: Polo Rodriguez
Branch Director: Mike Petro (T)	Branch Safety: Timothy Irwin
Division/Group Supervisor: Robert Edwards	Air Attack:

5. Resources Assigned:		** Resources Below in Bold are 12 Hour **					
Resource Identifier	ALS	OFR	Leader	Personnel	Request #	Hours	Reporting Location
DOZ PVT E-172		R	Kirk, Shane	3	E-172	0700-0700	TBD
DOZ PVT E-174		R	William Anderson	2	E-174	0700-0700	TBD
WT PVT E-74		C	Steven Coon	2	E-74	0700-0700	TBD
WT PVT E-80		C	Justin Cross	2	E-80	0700-1900	TBD
WT PVT E-84		C	Jeff Kurz	1	E-84	0700-1900	TBD
WT PVT E-85		C	Justin Cross		E-85	0700-0700	TBD
HEQB TBD						0700-0700	TBD
DIVS DIXON (T)		C	Kevin Dixon	1	O-14	0700-1900	TBD
FEMP HOOK		C	Michael Hook	1	O-231	0700-0700	TBD
FEMP MARCHESSEAU		C	Mark archesseault		O-232	0700-0700	TBD

6. Work Assignments:
Mop up 300' in from control line.
Hold and Improve control lines.

7. Special Instructions:
One resource per Branch identified for immediate surge and new fire starts. Surge resource will be identified by **.

8. Communications							
Name	Ch	Function	Rx Freq	Rx Tone	Tx Freq	Tx Tone	Notes
NIFC C31	1	COMMAND	172.5500N	146.2 (T5)	162.1875N	146.2 (T5)	TONE 5/CHEWS RIDGE
CDF T37	13	TACTICAL	159.3375	192.8 (T16)	159.3375	192.8 (T16)	
CDF T15	14	AIR TO GRD	159.2700	192.8 (T16)	159.2700	192.8 (T16)	Air to Ground
CALCORD	15	MEDICAL	156.0750N	156.7 (T6)	156.0750N	156.7 (T6)	
GUARD	16	AIRGUARD	168.6250N		168.6250N	110.9 (T1)	EMERGENCY ONLY

9. Prepared by: Name:	Jordan Weber	RESL (T)	Signature:
ICS 204	Date/Time: 8/22/2020	2200	Personnel Count: 12

ASSIGNMENT LIST (ICS 204 WF)

CONTROLLED UNCLASSIFIED
INFORMATION/BASIC

1. Incident Name: CARMEL ZONE	2. Operational Period: Date From: 08/23/20 Date To: 08/24/20 Time From: 0700 Time To: 0700	3. Branch Division XV QQ
--	---	---

4. Operations Personnel:		Page 1 of 1 Quebec-Quebec
Operations Section Chief: Mike Wink	Night Ops: Polo Rodriguez	
Branch Director: Mike Petro (T)	Branch Safety: Timothy Irwin	
Division/Group Supervisor: William Bryant (9311C)	Air Attack:	

5. Resources Assigned:		** Resources Below in Bold are 12 Hour **					
Resource Identifier	ALS	OFR	Leader	Personnel	Request #	Hours	Reporting Location
STA TBD						0700-0700	TBD
STA TBD						0700-0700	TBD
STC RRU 9311C		C	William Bryant	17	E-113	0700-0700	TBD
TF XMN 6180		C	Richard Nalder	17	E-11	0700-0700	TBD
ENG MCF 5533		R	Justin Linqvist	3	E-11	0700-0700	TBD
ENG BEU 4679R		C	Roan Corso	3	E-29	0700-0700	TBD
ENG SCU 1661		C	Kyle Breaw	3	E-129	0700-0700	TBD
ENG SCU 1672		C	Michael Garcia	3	E-127	0700-0700	TBD
ENG SCU 1681		C	Chris Satalan	3	E-128	0700-0700	TBD
STG TBD						0700-0700	TBD
STG TBD						0700-0700	TBD
CRW TLC OAK VALLEY		R	Torres, Rafael	19	C-24	0700-0700	TBD
DOZ PVT E-43		C	James Hall	2	E-43	0700-0700	TBD
DOZ PVT E-136		C	Dean Cordrey	2	E-136	0700-0700	TBD
WT CFC 7742		C		2	E-51	0700-0700	TBD
WT PVT E-83		C	Keith Curry	2	E-83	0700-0700	TBD
WT PVT E-118		C	Scott Edgerly	1	E-118	0700-1900	TBD
WT PVT E-120		C	Frank Schlitz	1	E-120	0700-1900	TBD
WT PVT E-122		C	Charles Perrault	2	E-122	0700-0700	TBD
HEQB O-53		C	Roberto Garcia	1	O-53	0700-0700	TBD
AMB ATA 7555		C	Andrew Hawkins	2	E-221	0700-1900	TBD

6. Work Assignments:
Mop up 300' in from control line.
Hold and Improve control lines.

7. Special Instructions:
One resource per Branch identified for immediate surge and new fire starts. Surge resource will be identified by **.

8. Communications

Name	Ch	Function	Rx Freq	Rx Tone	Tx Freq	Tx Tone	Notes
NIFC C31	1	COMMAND	172.5500N	146.2 (T5)	162.1875N	146.2 (T5)	TONE 5/CHEWS RIDGE
CDF T36	12	TACTICAL	151.1525	192.8 (T16)	151.1525	192.8 (T16)	
CDF T15	14	AIR TO GRD	159.2700	192.8 (T16)	159.2700	192.8 (T16)	Air to Ground
CALCORD	15	MEDICAL	156.0750N	156.7 (T6)	156.0750N	156.7 (T6)	
GUARD	16	AIRGUARD	168.6250N		168.6250N	110.9 (T1)	EMERGENCY ONLY


9. Prepared by: Name: Jordan Weber	RESL (T)	Signature:
ICS 204	Date/Time: 8/22/2020 2200	Personnel Count: 78

ICS 205 - INCIDENT RADIO COMMUNICATIONS PLAN

1. Incident Name: CARMEL ZONE Incident Channels		2. Date/Time Prepared Date: 08/22/2020 Time: 2230		3. Operational Period: Date To: 08/24/20 Time To: 0700	
--	--	--	--	---	--

4. Communications								
Ch#	Function	Name	Assigned To	Rx Freq	Rx Tone	Tx Freq	Tx Tone	Notes
1	COMMAND	NIFC C31	CARMEL ZONE	172.5500N	146.2 (T5)	162.1875N	146.2 (T5)	TONE 5/CHEWS RIDGE
2	COMMAND	NIFC C8	CARMEL ZONE	169.5375N	146.2 (T5)	164.7125N	146.2 (T5)	TONE 5/PALO ESCRITO
3								
4	COMMAND	NIFC C5	ALL DIVS	169.7500N	146.2 (T5)	167.1000N	146.2 (T5)	TONE 5/LOWER TORO
5								
6	TACTICAL	CDF T29	DIV AA	151.3475	192.8 (T16)	151.3475	192.8 (T16)	
7	TACTICAL	CDF T30	DIV KK	151.3925	192.8 (T16)	151.3925	192.8 (T16)	
8	TACTICAL	CDF T31	CONTINGENCY	159.3825	192.8 (T16)	159.3825	192.8 (T16)	
9	TACTICAL	CDF T24	NOT ASSIGNED	151.3325	192.8 (T16)	151.3325	192.8 (T16)	
10	TACTICAL	CDF T34	NOT ASSIGNED	151.4675	192.8 (T16)	151.4675	192.8 (T16)	
11	TACTICAL	CDF T35	NOT ASSIGNED	159.3225	192.8 (T16)	159.3225	192.8 (T16)	
12	TACTICAL	CDF T36	DIV QQ	151.1525	192.8 (T16)	151.1525	192.8 (T16)	
13	TACTICAL	CDF T37	DIV OO	159.3375	192.8 (T16)	159.3375	192.8 (T16)	
14	AIR TO GRD	CDF T15	ALL DIVS	159.2700	192.8 (T16)	159.2700	192.8 (T16)	Air to Ground
15	MEDICAL	CALCORD	ALL DIVS	156.0750N	156.7 (T6)	156.0750N	156.7 (T6)	
16	AIRGUARD	GUARD	ALL DIVS	168.6250N		168.6250N	110.9 (T1)	EMERGENCY ONLY
17								
18								
19								
20	AIRGUARD	GUARD	ALL DIVS	168.6250N		168.6250N	110.9 (T1)	EMERGENCY ONLY

5. Special Instructions
VER 2= 8/20/2020

6. Prepared by (Communications Unit Leader): Name: CORY COSTA COML(T)		Signature: 
ICS 205 - CONTROLLED UNCLASSIFIED INFORMATION/BASIC		Date/Time: 08/22/20 2230

CARMEL AIR OPERATIONS SUMMARY ICS-220

Incident Name / Number CARMEL_ZONE / CA BEU 004081	Sunrise 6:29	Startup 6:59	Cutoff 1917	Sunset 1947
General Remarks, Safety Notes, Hazards, Air Operations Special Equipment, etc. TRACK ALL DIPSITE LOCATIONS / NUMBER OF DIPS / GALLONS TAKEN. TRACK ALL DROP LOCATIONS / NUMBER OF DROPS / GALLONS DROPPED ALL GPS DATA TO BE COLLECTED IN DEGREES, MINUTES, DECIMAL MINUTES, FORMAT. AVOID: Aerial Application of Retardant / Foam / Agent within 300' of Waterways, Bodies of Water, etc. If Retardant / Foam / Agent is Dropped Within These Areas Immediately Notify the AOB and Provide the Following Information: Lat / Long, Estimated Number of Gallons and a Map Detailing The Area.				

Your Sunrise and Sunset info has not been updated for the current Op period Update

Frequency	RX	Tone	TX	Tone	AM / FM
COMMAND NIFC C5	169.7500	146.2 (T5)	167.1000	146.2 (T5)	FM
CARMEL AIR/GROUND-TAC	159.2700	192.8 (T16)	159.2700	192.8 (T16)	FM
AIR/AIR ROTARY	132.5250		132.5250		AM
AIR/AIR BRIEFING	123.1750		123.1750		AM
AIR TACTICS	167.0625		167.0625		FM
TOLC	122.2750		122.2750		AM
DECK	163.1000		163.1000		FM
RIVER AIR/GROUND - TAC	159.3600	192.8 (T16)	192.8 (T16)		FM
CALCORD - MEDICAL	156.0750	156.7 (6)	156.0750	156.7 (6)	FM
AIRGUARD - Emergency Only	168.6250	110.9 (1)	168.6250		FM

HELICOPTERS (Use page 2 if Needed)

FAA #	Type	Make/Model	Helibase	Avail	Start	Remarks
405LH	3	407	Marina	0700	0730	BUCKET/PAX A-30
877XL	3	350-B3	Marina	0700	0730	HLCO/PAX A-41
488PT	3	350-B2	Marina	0700	0730	BUCKET/PAX A-43
370FG	2	UH-1H	Marina	0700	0730	RESTRICTED/BUCKET A-120
C-406	2	UH-1H	Marina	0700	0730	TANK/HOIST/PAX A-51
373PA	2	Bell 212	Marina	0700	0730	BUCKET/LONGLINE/PAX A-26
811KA	2	Bell 212 HP	Marina	0700	0730	BUCKET/LONGLINE/PAX A-125
400U	1	CH-47D	Marina	0700	0730	TANK/RESTRICTED A-32
404AJ	1	CH-47D	Marina	0700	0730	TANK/RESTRICTED A-123

FIXED WING (Use Page 2 if Needed)

FAA #	Type	Make/Model	Base	Avail	Start	Remarks
AA 460		OV-10	CVH			
T 74	3	S-2T	KPRB			
T 75	3	S-2T	KPRB			
T 79	3	S-2T	CVH			
T 80	3	S-2T	CVH			

Time Prepared	Date Prepared	Prepared By
1800	Saturday, August 22, 2020	Matt Hill
Shutdown 2017	Operational Period - Date Sunday August 23, 2020	Operational Period - Time 0700-0700
Helibase Information Name Marina Latitude 36.40.8 Longitude -121.45.7 Name King Latitude 36.13.713 Longitude -121.07.28 (use page 2 if needed)	TFR Information Request # A- 124 Polygon: NM Altitude: 6500' MSL Centerpoint: NOTAMS: 0/5852 Frequency 132.5250 http://tfr.faa.gov/tfr2/list.html	Rescue Ship Information Day/Hoist Night Hoist Name C-406 Phone 916-704-9594 Make/Model UH-1H Location Marina Request Procedure for These Aircraft: Incident Communications See Medical Plan For Additional Info
Position AOB ASGS HEBM HLCO ATGS	Name Matt Hill Thomas Smith Peter York Stephen Martin Tom Firth	Phone (530) 708-2707 (831) 233-8180 (530) 386-2147 (530) 409-7710 (831) 601-2320

SAFETY MESSAGE/PLAN (ICS 208)

River: CA-BEU-004024 Carmel: CA-BEU-004081	Operational Period: Date From: 8/23/20 Date to: 8/24/20 Time From: 0700 Time to: 0700
---	--

//// MAJOR HAZARDS AND RISKS: ////

Weather:

Constantly monitor for changes in weather. Areas that may have previously burned can **re-burn**. Utilize your Lookouts, Communications, Escape Routes and Safety Zones.

Wildland/Urban Interface:

Reference the **CAL FIRE** structure defense guide card & pg. 12-16 in the IRPG. Keep alert for WUI hazards.

Entrapment Avoidance:

Adhere to the 10 Standard Firefighting orders. Consider the 18 Situations that Shout Watch Out. Consider the Common Denominators of Fire Behavior on Tragedy Fires. Maintain LCES. Establish your decision point(s). Conduct risk management.

Communications:

Ensure your radio load is current per ICS 205 in the IAP. Place human repeaters as necessary to communicate. Be clear and concise with instructions.

Extreme fire behavior potential:

Monitor all weather conditions and forecasts. Make sure ALL personnel receive a thorough briefing every shift. Maintain adequate escape routes and safety zones. Advise all personnel if these are compromised or changed. Set decision points when appropriate.

Driving:

Steep, narrow or dusty roads throughout fire area. Maintain safe following distances and appropriate speed when traversing roads. Flag unstable roads and other hazards that may be encountered while driving. Follow posted speed limits while driving in Toro base camp.

Power lines:

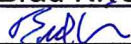
Follow Power Line Safety guidelines on pg. 24 of the IRPG.
Follow FIRESCOPE identification and management of Life Safety Zones procedures, 3 horizontal strands of fire line tape, write "Do not enter" or "Do not cross"

Hazardous Trees and Snags:

Be alert of snags. When crews are working in a very hazardous area stay diligent and flag hazardous areas. Avoid taking breaks under trees.

Prepared By: Brad Niyen

Position/Title: SOF1(T)

Signature: 

THUNDERSTORM & LIGHTNING SAFETY

REMEMBER!

If you can hear thunder or see lightning (the actual strike vs “heat lightning” described below), you are close enough to the storm to be struck by lightning.

Heat lightning is lightning from a thunderstorm too far away for the thunder to be heard. However, the storm may be moving in your direction.

- Maintain **Situational Awareness** at all times and post **Lookouts** as needed to observe thunder cells.
- Approaching thunder cells will affect wind speed and direction.
- Keep the “**30/30 Rule**” in mind. If you see lightning and hear thunder within 30 seconds, seek shelter and/or follow the established **Safety/Disengagement Plan**.
- Take shelter inside vehicles or buildings.
- If caught outdoors, find a low spot and assume a crouched position, limiting contact with the ground.
- Avoid tall trees, wire fences, utility poles, etc.
- Do not stay on ridgetops, wide open areas, near ledges or rock outcroppings.
- Do not group together.
- Handheld radios and cellular telephones can be used.
- Do not use land line telephones, machinery, or electric motors.
- Remain in a safe environment for at least 30 minutes after the thunder cell has passed.



LOOKOUTS COMMUNICATIONS ESCAPE ROUTES SAFETY ZONES



CAL FIRE IMT COVID-19 ACTIONS

PERSONNEL WITH COVID-19 SYMPTOMS

- **Symptoms per the CDC's current guidelines include the following:**
 - Cough, fever(100.4), chills, muscle pain, shortness of breath, sore throat, new loss of taste or smell
- **Incident Base or Fire Line**
 - Maintain appropriate face covering
 - Notify supervisor and proceed to CALMAT
 - Isolate and assess patient
 - Medical direction to test, return patient to home unit/agency for testing

CONTACTED OR EXPOSED PERSONNEL AND ASYMPTOMATIC

- Notify supervisor
- Maintain appropriate face covering
- Self-monitor for symptoms
- Employee will continue assignment with preventative measures

PREVENTATIVE MEASURES TO SLOW THE TRANSMISSION COVID-19:

- Wash your hands regularly with soap and water, or clean them with alcohol-based hand rub.
 - Maintain at least six feet distance between you and people coughing or sneezing.
 - Avoid touching your face.
 - Cover your mouth and nose when coughing or sneezing.
 - Stay home if you feel unwell.
 - Refrain from smoking and other activities that weaken the lungs.
 - Practice physical distancing by avoiding unnecessary travel and staying away from large groups of people.
 - Maintain proper personal care (healthy diet and rest)
-



RIVER/CARMEL INCIDENT SAFETY MESSAGE



Thunderstorm Safety

Approaching thunderstorms may be noted by a sudden reverse in wind direction, a noticeable rise in wind speed, and a sharp drop in temperature. Rain, hail, and lightning occur only in the mature stage of a thunderstorm.

Situational Awareness

Observe the 30/30 rule: If you see lightning and hear the thunderclaps follow in less than 30 seconds, take the storm precautions identified below. Do not resume work in exposed areas until 30 minutes after storm activity has passed.

Hazard Control

- Take shelter in a vehicle or building if possible.
- If outdoors, find a low spot away from tall trees, wire fences, utility lines and other elevated conductive objects. Make sure the place you pick is not subject to flooding.
- If in the woods, move to an area with shorter trees.
- If only isolated trees are nearby, keep your distance twice the tree height.
- If in open country, crouch low, with feet together, minimizing contact with the ground. You can use a pack to sit on, but never lay on the ground.
- If you feel your skin tingle or your hair stand on end, immediately crouch low to the ground. Make yourself the smallest possible target and minimize your contact with the ground.
- Don't group together.
- Don't stay on ridge tops, wide open areas, or near ledges or rock outcroppings.
- Don't operate landline telephones, machinery, or electric motors.
- Don't handle flammable materials in open containers or metal hand tools.

MEDICAL PLAN (ICS 206)

1. Incident Name: River / Carmel Fire		2. Operational Period: Date From: 08/23/2020 Time From: 07:00		Date To: 08/24/2020 Time To: 07:00			
3. Medical Aid Stations:		MEDICAL UNIT LEADER: (213) 604-1258		COMMUNICATIONS UNIT: (805) 903-3489			
Name	Location	Contact Number(s)/Frequency	Level of Service				
MERT	At Base Camp next to food line	(951) 757-4670	ALS				
4. Transportation (indicate air or ground):							
Ambulance Service	Location	Contact Number(s)/Frequency	Level of Service				
AMR MEDIC (GROUND)	DP-30	Command	ALS				
Monterey Co Fire (GROUND)	DP-110	Command	ALS				
Cal Star (AIR)	Salinas or Gilroy	Command	ALS				
Cal Fire 406 (AIR)	Local Unit Response	Command	BLS				
H70 CHP (HOIST)	Paso Robles	Command	ALS				
5. Hospitals:							
Hospital Name	Address, Latitude & Longitude if Helipad	Contact Number(s)/ Frequency	Travel Time		Trauma Center	Burn Center	Helipad
			Air	Ground			
SALINAS VALLEY MEMORIAL HOSPITAL	450 E Romie Ln, Salinas, CA 93901	(831) 759-3257	N/A	20 MIN	NO	NO	NO
NATIVIDAD MEDICAL CENTER	1441 Constitution Blvd, Salinas, CA 93906	(831) 647-7611	7 MIN	23 MIN	YES LEVEL 2	NO	YES
Santa Clara Valley Medical Center	751 S Bascom Ave, San Jose, CA 95128	(408) 885-5000	25 MIN	1Hr 15MIN	YES LEVEL 1	YES	YES
COMMUNITY HOSPITAL OF THE MONTEREY PENINSULA	23625 Holman Hwy, Monterey, CA 93940	(831) 624-5311	N/A	20 MIN	NO, Stroke/STEMI	NO	NO
STANFORD HEALTH CARE	300 Pasteur Dr. Stanford, CA 94305	(650) 723-4000	28 MIN	1Hr 45 MIN	YES	NO	YES
6. Special Medical Emergency Procedures: LINE EMERGENCY: Crew Supervisor to contact Division Supervisor with patient complaint/condition, location, and resource needs.			BASE CAMP EMERGENCY: CONTACT COMMUNICATIONS UNIT AT: (805) 903-3489 report patient complaint/condition and location. Medical Staff will respond to stabilize incident				
<ul style="list-style-type: none"> • Division Supervisor contacts and gives report on conditions, complaint/condition, and resource needs to: <ol style="list-style-type: none"> 1. Nearest Line FEMT/FEMP 2. Communications Unit • Emergency or Priority traffic received: Communication Unit will clear the command channel for emergency traffic only, for the duration of the MAJOR IWI • Communications Unit will make proper notifications • OPERATIONS can declare a MAJOR IWI based on the report on conditions from the division supervisor • Division Supervisor or designee will serve as point of contact (IWI SUPERVISOR) and run the emergency utilizing the COMMAND CHANNEL and CALCORD for the tac net during the IWI 							
ALL EMERGENCIES: Secure the area and identify witnesses for later investigation. Keep an accurate log of events			INJURY REPORTING PROCEDURES CHIEF COMPLAINT _____ LOCATION OF PATIENT _____ TRANSPORT REQUEST BY: AIR ___ GROUND ___ DIVISION _____ CREW _____ POINT OF PICKUP _____ LAT _____ LONG _____ IS EMT WITH THE PATIENT: YES ___ NO ___ AGE _____ SEX: MALE ___ FEMALE ___ ***START 20 MINUTE TIMER IF IWI***				
7. Prepared by (Medical Unit Leader): Name: RAICE WICKLAS			Signature: _____				
8. Approved by (Safety Officer): DENNIS LANGE			Signature: _____				
ICS 206	IAP Page _____	Date/Time: 08/22/2020 2000					



River/Carmel Inc

SERVICES SCHEDULE



Base Camp:

MKU: Breakfast: 0500-1100

Dinner: 1700-2200

Sack Lunch Distribution: 0600-2000

Laundry Service: 0600-2200

Supply: 0600-2200

Saw Shop: 0600-2200

Showers: 24 hrs/day

FORT ORD (Sleep Trailers):

Showers: 0500-2300

Laundry Service: 0600-2300



PUBLIC INFORMATION SECTION



Media Information Line
(831) 647-6257

Public Information Line
(925) 532-5455
2-1-1



@CALFIREBEU
@CAL_FIRE



@CALFIREBEU
@CALFIRE

RIVER FIRE STATUS	
Incident Start Date: 8/16/2020	Incident Start Time: 3:04 A.M.
Cause: Lightning	Acres:
Containment:	Total Personnel:

CARMEL FIRE STATUS	
Incident Start Date: 8/18/2020	Incident Start Time: 3:00 P.M.
Cause: Under investigation	Acres:
Containment:	Total Personnel:

2-1-1 – The public is encouraged to call 2-1-1 to receive current incident information.

MEDIA – The California State Penal Code Section 409.5(d) allows the news media to enter scenes of disaster, riot or civil disturbance. Properly identified members of the news media should not be restricted from entering locations specified within the code. However, this does not include crime scenes, private property and does not imply that the news media may interfere with incident operations while they are in the areas of concern.

CAL FIRE SOCIAL MEDIA POLICY – When assigned to a CAL FIRE incident, you will adhere to the CAL FIRE Social Media Policy, Section 0691.



PHOTOGRAPHS AND VIDEOS OF INCIDENT –The Public Information Office would like copies of the videos and pictures that you may take when *not* engaged in fire suppression activity, duties of your overhead assignment, or in an unsafe environment. Please bring your videos and pictures to the Public Information trailer; they will be reviewed and possibly uploaded to our many CAL FIRE social media sites. Remember, we do not want photographs or videos that depict unsafe, unprofessional or embarrassing circumstances, which are a serious breach of ethics.

LOST AND FOUND – The Information Section will manage lost and found items for the incident.

MAIL DELIVERY – As a courtesy, the following address has been secured for assigned personnel to has personal correspondence delivered.

RIVER/CARMEL FIRE - TORO PARK
C/O [YOUR NAME AND REQUEST NUMBER]
501 MONTEREY-SALINAS HWY 68, SALINAS, CA 93908

RIVER Inc.

CA-BEU-004024

CARMEL Inc.

CA-BEU-004081

FINANCE MESSAGE



- Please come by the Time Unit and start your and update your FC-33
- Vendors please drop off your agreements to the Time Unit
- Shift Tickets need to be completed by line supervisor and turned and the end of each shift.
- All injuries need to be reported to the COMP / CLAIMS Unit
- All property Damage must be reported and documented
- Please report any Vehicle Damage this includes Rental Vehicles
- Local Government please check in with OES
- **OFF-SITE FEEDING IS NOT APPROVED**

INCIDENT BILLING INFORMATION

CAL FIRE – SAN BENITO MONTEREY UNIT

2221 GARDEN RD
MONTEREY, CA 93940

E-fund Billing Code: 013850
PCA 00900

eFC-33 INITIAL INPUT FORM

1 2 3 4 5 6 7

Overhead: complete one form per person.
All Others: complete one form per vehicle.

Request Number						
E	1	2	3	4	5	6

State Agency	Incident Number	Incident Name	Incident Index Code	Incident PCA Code
CA	0001234	MOSQUITO	3400009000	

Strike Team	Resource ID - Fire Assignment	Home Station / Office Location
ST	E-3489	PASO ROBLES

YOUR NORMAL DUTY SCHEDULE	24 Hr 8-8 7-7 Other	Portal to Portal? <input checked="" type="checkbox"/>	YOUR AGENCY CAL FIRE	HOME UNIT S L U	COMMIT RELEASE	YOUR CELL PHONE # 805-922-2096
---------------------------	---------------------------	--	-------------------------	--------------------	-------------------	-----------------------------------

PERSONNEL	Schedule A B	Other	Last Name	First Name	Rank or Classification	# of Regular Duty Scheduled Hours per Day										
						Mon	Tue	Wed	Thu	Fri	Sat	Sun				
EMPLOYEE 1																
EMPLOYEE 2																
EMPLOYEE 3																
EMPLOYEE 4																
EMPLOYEE 5																
EMPLOYEE 6																
	<input checked="" type="checkbox"/> One Box		Johnson	Robert	FC											

VEHICLE	Schedule A B	Other If Other, explain	Radio ID	Kind of Vehicle	ID No/X No
VEHICLE 1					X
VEHICLE 2					X
	<input checked="" type="checkbox"/> One Box		E-3489	FTH	
		Portable Pump?			
		Chainsaw Quantity:			
					0 2 X 1 2 3

Put a Dozer and It's Transport on a single form. All others, use one form per individual vehicle.

ADDITIONAL INFO



SHIFT TICKET EXAMPLE

EMERGENCY SHIFT TICKET and EVALUATION FORM					Contractor Name						
Incident or Project Name WALL			Incident Number CABTU 010975	Request Number E or S # Here	H2O DUDE						
Agreement Number XXX - 000000 - 00					Operator #1 BOB SMITH	Operator #2					
Equipment Make FREIGHTLINER			Equipment Model / Type WATER TENDER 2500 + GAL			Operator Furnished By: <input checked="" type="checkbox"/> Contractor <input type="checkbox"/> Government					
Serial Number 1XP3ESMP14239012			Licence Number 55555555			Operating Supplies Furnished By: <input checked="" type="checkbox"/> Contractor <input type="checkbox"/> Government					
Equipment Use (Circle) Hours Days / Miles					Equipment Status <input checked="" type="checkbox"/> Inspected <input checked="" type="checkbox"/> Under Agreement <input type="checkbox"/> Released by Government <input type="checkbox"/> Withdrawn by Contractor						
Date Mo / Day	Start	Stop	Work	Assignment							
8/3	0700	1900	12	DIV Z							
8/4	1900	2400	5	OFF SHIFT							
8/4	0001	0700	7	OFFSHIFT							
Vendor Rating					Govt. Rep. Name and Position - PRINT						
<table border="1"> <tr> <td>Poor*</td> <td>Avg.</td> <td>Good</td> <td>Exc.</td> <td>N/A</td> </tr> </table>					Poor*	Avg.	Good	Exc.	N/A	Mike Weber	
Poor*	Avg.	Good	Exc.	N/A							
Met Performance Expectations					Govt. Rep. Signature						
Equipment in Safe Working Condition					Mike Weber						
Operator Skill Level					Contractor Signature						
Operates Safely					Bob Smith						
Operator's Cooperation Level					Date	Time					
Overall Performance					08/04/15	0800					
<p>* NOTE: Any rating of POOR requires an explanation in Comment Section. **Final evaluation or for more documentation, use an ICS Form 230 or equivalent.</p>					CALFIRE 297 (Rev 3-2011)						
Pink - Finance		Blue - Home Unit HE Coordinator		Yellow - Vendor		White - Govt Representative					

EMERGENCY SHIFT TICKET and EVALUATION FORM					Contractor Name						
The responsible Government Officer will complete this form each shift											
Incident or Project Name WALL			Incident Number CABTU 010975	Request Number E OR S # Here	WATER GUY						
Agreement Number XXX - 000000 - 00					Operator #1 BOB SMITH	Operator #2 BILL SMITH					
Equipment Make PETERBUILT			Equipment Model / Type WATER TENDER 2500 + GAL			Operator Furnished By: <input checked="" type="checkbox"/> Contractor <input type="checkbox"/> Government					
Serial Number 1XP3ESMP14239012			Licence Number 9999999			Operating Supplies Furnished By: <input checked="" type="checkbox"/> Contractor <input type="checkbox"/> Government					
Equipment Use (Circle) Hours Days / Miles					Equipment Status <input checked="" type="checkbox"/> Inspected <input checked="" type="checkbox"/> Under Agreement <input type="checkbox"/> Released by Government <input type="checkbox"/> Withdrawn by Contractor						
Date Mo / Day	Start	Stop	Work	Assignment							
8/3	0700	2400	17	DIV M							
8/4	0001	0700	7	DIV M							
Vendor Rating					Govt. Rep. Name and Position - PRINT						
<table border="1"> <tr> <td>Poor*</td> <td>Avg.</td> <td>Good</td> <td>Exc.</td> <td>N/A</td> </tr> </table>					Poor*	Avg.	Good	Exc.	N/A	Mike Weber	
Poor*	Avg.	Good	Exc.	N/A							
Met Performance Expectations					Govt. Rep. Signature						
Equipment in Safe Working Condition					Mike Weber						
Operator Skill Level					Contractor Signature						
Operates Safely					Bob Smith						
Operator's Cooperation Level					Date	Time					
Overall Performance					08/04/15	0800					
<p>* NOTE: Any rating of POOR requires an explanation in Comment Section. **Final evaluation or for more documentation, use an ICS Form 230 or equivalent.</p>					CALFIRE 297 (Rev 3-2011)						
Pink - Finance		Blue - Home Unit HE Coordinator		Yellow - Vendor		White - Govt Representative					

Turn shift tickets into Finance.

SHIFT TICKET EXAMPLE

EMERGENCY SHIFT TICKET and EVALUATION FORM					Contractor Name											
Incident or Project Name LILAC INC			Incident Number CAMVU024612		Request Number E#											
Agreement Number XXX - 000000 - 00			Operator #1 BOB SMITH		Operator #2 TOM SMITH											
Equipment Make CAT			Equipment Model / Type D6XM		Operator Furnished By: <input checked="" type="checkbox"/> Contractor <input type="checkbox"/> Government											
Serial Number FULL VIN#			Licence Number 1234567		Operating Supplies Furnished By: <input checked="" type="checkbox"/> Contractor <input type="checkbox"/> Government											
Equipment Use (Circle) Hours Days / Miles			Equipment Status <input checked="" type="checkbox"/> Inspected <input checked="" type="checkbox"/> Under Agreement		Released by Government <input type="checkbox"/> Withdrawn by Contractor <input type="checkbox"/>											
Date	Start	Stop	Work	Assignment												
12/8	0700	2400	17	DIV M												
12/9	0001	0700	7	DIV M												
Vendor Rating					Govt. Rep. Name and Position - PRINT Mike Weber											
<table border="1"> <tr> <th>Poor*</th> <th>Avg.</th> <th>Good</th> <th>Exc.</th> <th>N/A</th> </tr> <tr> <td></td> <td></td> <td></td> <td></td> <td></td> </tr> </table>					Poor*	Avg.	Good	Exc.	N/A						Govt. Rep. Signature <i>Mike Weber</i>	
Poor*	Avg.	Good	Exc.	N/A												
Met Performance Expectations					Contractor Signature <i>Bob Smith</i>											
Equipment in Safe Working Condition					Date 08/04/15											
Operator Skill Level					Time 0800											
Operates Safely					Remarks/Comments ** 2 OPERATORS											
Operator's Cooperation Level					Date 08/04/15											
Overall Performance					Time 0800											
<p>* NOTE: Any rating of POOR requires an explanation in Comment Section. **Final evaluation or for more documentation, use an ICS Form 230 or equivalent.</p>					CALFIRE 297 (Rev 3-2011)											
Pink - Finance		Blue - Home Unit HE Coordinator		Yellow - Vendor		White - Govt Representative										

EMERGENCY SHIFT TICKET and EVALUATION FORM					Contractor Name											
The responsible Government Officer will complete this form each shift																
Incident or Project Name LILAC INC			Incident Number CAMVU 024612		Request Number E #											
Agreement Number XXX - 000000 - 00			Operator #1 BOB SMITH		Operator #2 TOM SMITH											
Equipment Make TRANSPORT/ KENWORTH			Equipment Model / Type COZAD TRAILER /26 WHEELS		Operator Furnished By: <input checked="" type="checkbox"/> Contractor <input type="checkbox"/> Government											
Serial Number 1XP3ESMP14239012			Licence Number 9999999		Operating Supplies Furnished By: <input checked="" type="checkbox"/> Contractor <input type="checkbox"/> Government											
Equipment Use (Circle) Hours Days / Miles			Equipment Status <input checked="" type="checkbox"/> Inspected <input checked="" type="checkbox"/> Under Agreement		Released by Government <input type="checkbox"/> Withdrawn by Contractor <input type="checkbox"/>											
Date	Start	Stop	Work	Assignment												
12/8	0700	2400	17	DIV M												
12/9	0001	0700	7	DIV M												
Vendor Rating					Govt. Rep. Name and Position - PRINT Mike Weber											
<table border="1"> <tr> <th>Poor*</th> <th>Avg.</th> <th>Good</th> <th>Exc.</th> <th>N/A</th> </tr> <tr> <td></td> <td></td> <td></td> <td></td> <td></td> </tr> </table>					Poor*	Avg.	Good	Exc.	N/A						Govt. Rep. Signature <i>Mike Weber</i>	
Poor*	Avg.	Good	Exc.	N/A												
Met Performance Expectations					Contractor Signature <i>Bob Smith</i>											
Equipment in Safe Working Condition					Date 08/04/15											
Operator Skill Level					Time 0800											
Operates Safely					Remarks/Comments ** 2 OPERATORS											
Operator's Cooperation Level					Date 08/04/15											
Overall Performance					Time 0800											
<p>* NOTE: Any rating of POOR requires an explanation in Comment Section. **Final evaluation or for more documentation, use an ICS Form 230 or equivalent.</p>					CALFIRE 297 (Rev 3-2011)											
Pink - Finance		Blue - Home Unit HE Coordinator		Yellow - Vendor		White - Govt Representative										

Turn shift tickets into Finance.

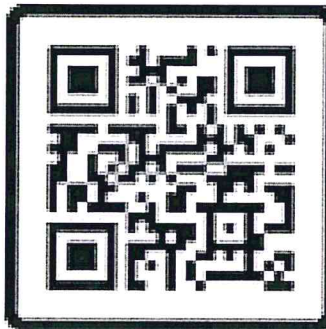


Training Specialist Message



All State, Federal and local government agency Trainees working on Position Task Books will need to register with the Incident Training Specialist. This will ensure proper that each trainee receive proper credit and documentation for their assignment.

The Training Specialist is in trailer row next to Check -in. Please utilize the QR code below for remote check-in.



**Dave Randolph
Training Specialist
(805) 857-4820**

Archaeological and Historical Sites Fireline Guidance for the River and Carmel Incidents

Do not compromise safety for the protection and preservation of archaeological and historical sites. When feasible and prudent:

1. Be on the lookout for prehistoric and historic sites. Prehistoric archaeological sites include temporary camps containing scatters of obsidian and/or chert flakes that often look like broken glass. More permanent village sites contain circular depressions (house pits), artifact scatters, grinding holes in rocks (bedrock mortars), and dark brown-black soils (midden). These typically occur on flats near sources of water, along ridgetops and saddles, and other such places suitable for camping. Historic sites include old wooden buildings, structures and corrals, stone buildings, rock foundations, wells, and debris scatters. These kinds of resources can be found in the same kinds of environmental settings as prehistoric camp sites.
2. Some archaeological sites have been flagged with orange and white candy-striped "Special Treatment Zone" flagging. If you encounter a flagged area, heavy equipment should not enter or operate within the area. If such an area is entered or operated in, please inform the State Archaeologist. Any questions regarding flagged sites can be directed to the State Archaeologist.
3. While some sites have been flagged, many have not. If you observe artifacts, features, or sites, attempt to avoid dozing or driving through and/or parking on these sites, if feasible, especially with heavy equipment. If you can't avoid sites, minimize disturbance as much as feasible, only clearing the surface to as minimal a depth and width as necessary.
4. Leave all artifacts in place. Some artifacts may have been intentionally placed for religious or ceremonial reasons.
5. When a site is discovered, flag it for visibility and report its location to the Division Supervisor and/or the State Archaeologist. If feasible, note locations of discovered resources on a map. Better yet, take a GPS reading. Leave information with the Plans Section so that the sites can be relocated and protected during both the suppression and fire suppression repair phases of the Incident.
6. If you encounter a burial or other human remains, cease work in that area immediately and contact the CAL FIRE Archaeologist. State law requires that CAL FIRE then contact the County Coroner, who will then determine if the remains are part of a crime scene. If the Coroner determines that the remains are Native American, State law requires the Coroner to contact the Native American Heritage Commission in Sacramento.



FIRING OPERATION CHECKLIST

Location: _____

Date: _____ Time: _____

Firing Supervisor: _____

1. Personnel Briefing

- Objectives
- Conditions (fire environment)
- Resource assignments identified
 - Firing personnel
 - Holding forces
 - Lookouts
- Ignition plan/sequence
- Communication Plan
- Contingency Plan
- Safety issues

2. Go / No-Go

- All personnel briefed
- Weather forecast reviewed
- Resources in place
- Lookouts posted as needed
- Anchor and termination firing points identified
- Communications systems in place
- Fire behavior forecast reviewed
- Escape routes and safety zones established and made known
- Adjoining forces/Air Attack notified

3. Approval Prior To Firing

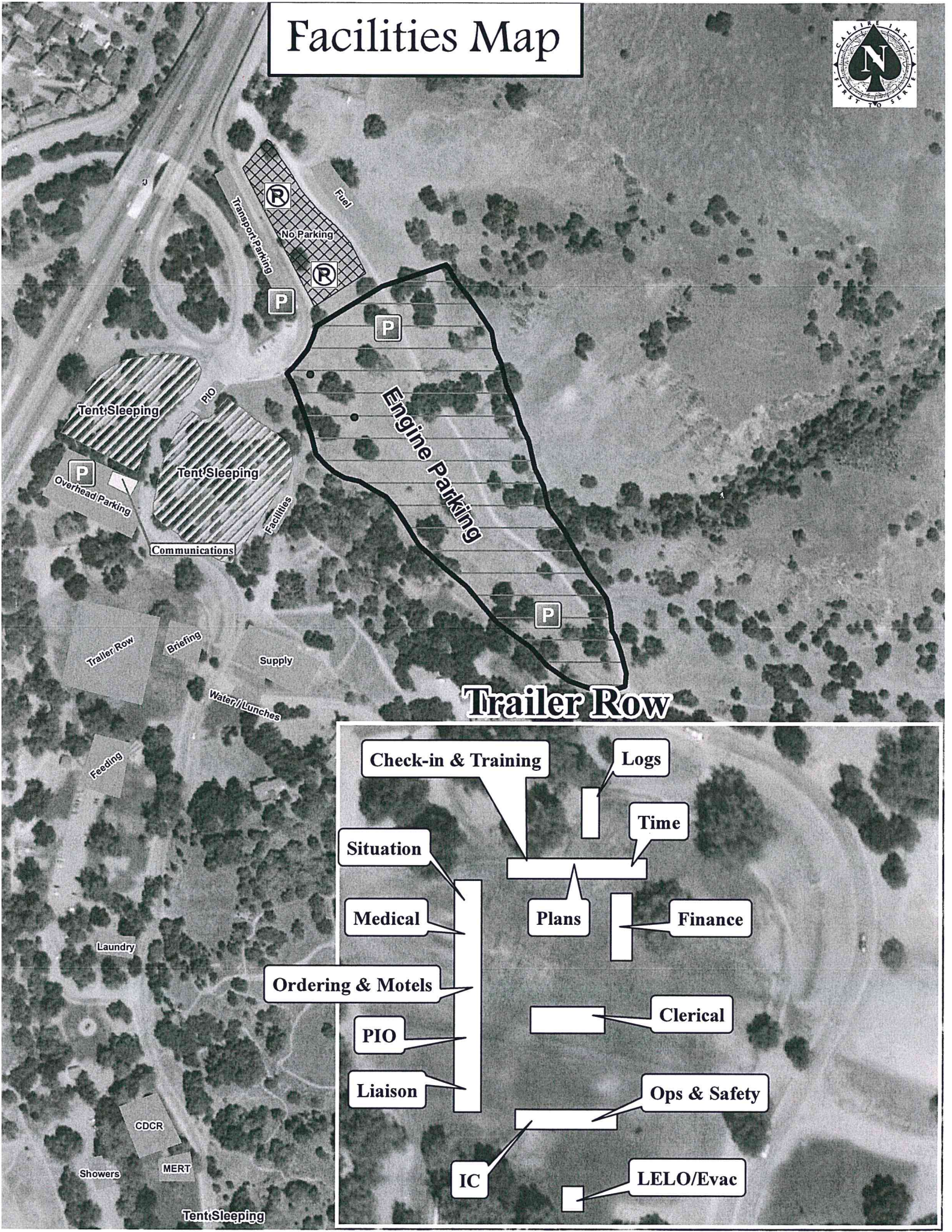
- Division Supervisor
- Branch Director
- Operations

4. Other Notifications

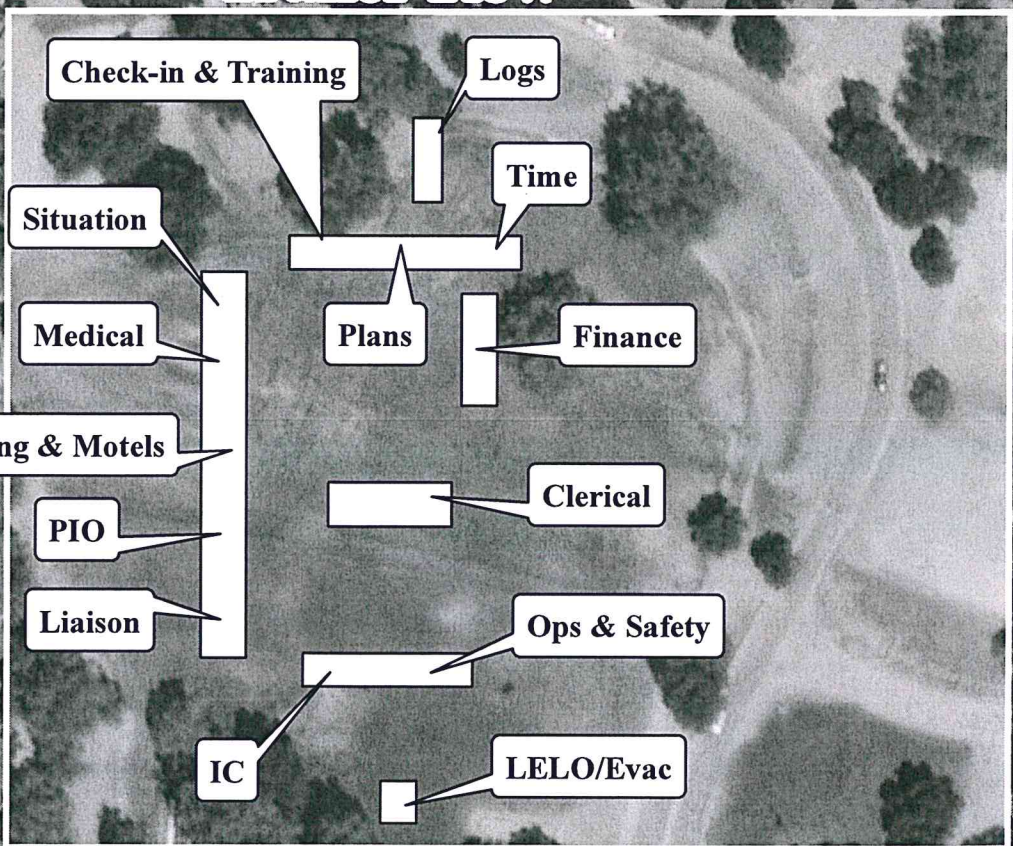
- Other: _____
- Other: _____

Attach Firing Operations Checklist to ICS-214

Facilities Map



Trailer Row





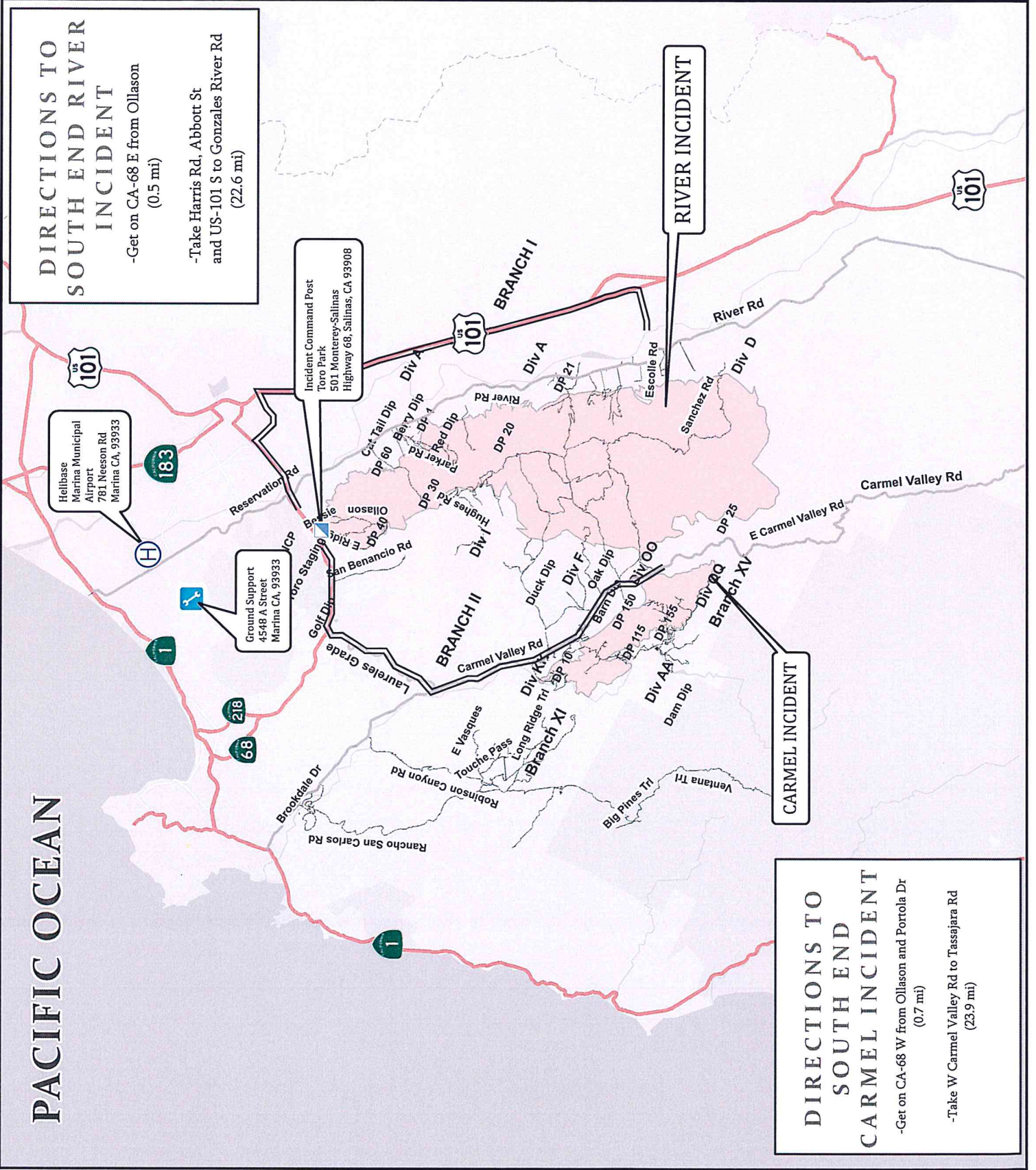
August 23, 2020
0700-0700

River Incident
CA-BEU004024
Carmel Incident
CA-BEU004081

- Dip Site
- Drop Point
- Aerial Hazard
- Helibase
- Incident Command Post
- Repeater
- Staging Area
- Ground Support
- Division Break
- Branch Break



0 1 2 4 6 8 Miles



DIRECTIONS TO SOUTH END RIVER INCIDENT
-Get on CA-68 E from Ollason (0.5 mi)
-Take Harris Rd, Abbott St and US-101 S to Gonzales River Rd (22.6 mi)

Helibase
Marina Municipal Airport
781 Neeson Rd
Marina CA, 93933

Ground Support
4548 A Street
Marina CA, 93933

Incident Command Post
Toro Park
501 Monterey-Salinas Highway 68, Salinas, CA 93908

DIRECTIONS TO SOUTH END CARMEL INCIDENT
-Get on CA-68 W from Ollason and Portola Dr (0.7 mi)
-Take W Carmel Valley Rd to Tassajara Rd (23.9 mi)

PACIFIC OCEAN

