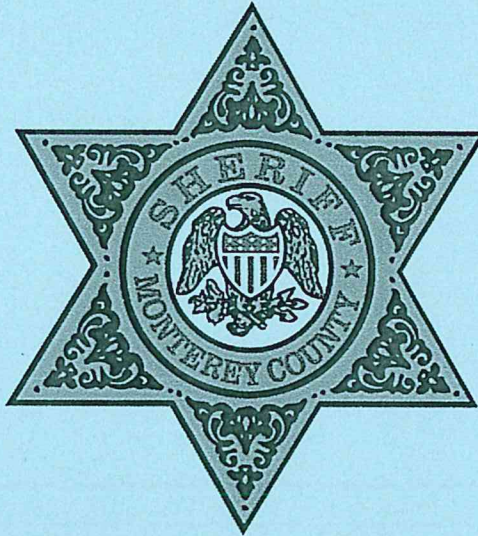


**\*CORRECTED\***

# INCIDENT ACTION PLAN

**RIVER - CA-BEU-004024**

**CARMEL - CA-BEU-004081**



Friday

## OPERATIONAL PERIOD

**8/28/2020      0700**

**to**

**8/29/2020      0700**

**Briefing on CDF TAC 24**

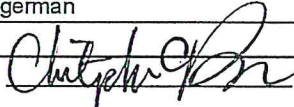








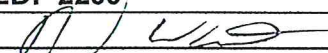
## ORGANIZATION ASSIGNMENT LIST (ICS 203)

<b>1. Incident Name:</b> RIVER ZONE		<b>2. Operational Period: Date From:</b> 8/28/2020 Time From: 0700		<b>Date To:</b> 8/29/2020 Time To: 0700	
<b>3. Incident Commander(s) and Command Staff:</b>			<b>7. Operation Section:</b>		
IC/UC's	Nick Truax, George Huang (T)		Operations	Mike Wink	
Deputy	Greg Bertelli		Deputy Operations	Tony Brownell, Merrick Fields (T)	
Safety Officer	Dennis Lange, Brad Niven (T)		Night Ops	Polo Rodriguez	
Information Officer	Emily Smith, Isaac Sanchez (T)		Staging Area		
Liaison Officer	Brandon Smith, Brandon Gunn (T)		<b>Branch</b>	<b>I</b>	<b>Magnus Jonsson / Rik Valles (T)</b>
<b>4. Agency/Organization Representatives:</b>			Division/Group	P/A	Will Goodman (9410C)
Agency/Organization	Name		Division/Group	D	Robert Tanner
Monterey Regional Fire	Michael Urquides		Division/Group		
CAL OES	David Franklin		Division/Group		
Monterey Sheriff	Jason Smith		Division/Group		
CHP	Kyle Foster		<b>Branch</b>	<b>II</b>	<b>Josh Taylor / Joshua Heinbach (T)</b>
BLM	Dave Slibsager		Division/Group	F	Hector Ramirez
Monterey County OES	Kelsey Scanlon		Division/Group	I/L	Brandon Lanning / Mrgan Mason (T)
Red Cross	Patsi Gasca		Division/Group		
CCC	Miguel Diaz		Division/Group		
PG&E	Geoff Money		Division/Group		
Monterey Farm Bureau	Norm Groot		Division/Group		
Monterey County Parks	Micah Beardsall		Staging Area	TORO	Joe Tabush
CA American Water	Albert Sanchez		Division/Group		
Monterey CO. SPCA	Rosanna Leighton		Division/Group		
CDCR	Micheal Nilsson		Division/Group		
CA Water Service	Aaron Scott		Division/Group		
			<b>Branch</b>		
			Division/Group	FSR	Timothy Montgomery
<b>5. Planning Section:</b>			Division/Group		
Chief	Chris Carrera		Division/Group		
Deputy	Chris Reneau		Division/Group		
Resource Unit	Paul Carlos, BJ Corey, Jordan Weber (T)		Division/Group		
Situation Unit	Rob DeCamp, Matt Thau (T)		<b>Branch</b>		
Documentation Unit	Janet Arthur		Division/Group		
Demobilization Unit	Ryan Villarino, Keith Swope (T)		Division/Group		
GISS	Tim Werle, Eric Scovel (T)		Division/Group		
FBAN	Don Watt		Division/Group		
IMET	James Dudley		Division/Group		
Training Tech Spec	Dave Randolph		<b>Air Operations Branch</b>		<b>Director:</b> Matt Hill
			Air Support Group Supervisor		Thomas Smith
			Air Tactical Group Supervisor		
<b>6. Logistics Section</b>			Helibase Manager		Peter York
Chief	Jesse Morris, Craig White				
Supply Unit	Lon Story, Mat Brabo (T)		<b>8. Finance/Administration Section:</b>		
Facilities Unit	Jacob Guerra, Travis Heard		Chief	Jack Franklin	
Ground Support Unit	Pete Mock, Michael Darcy		Deputy	Bob Counts	
Communications Unit	Tom Webb		Time Unit	Shannon Thompson, Al DaSilva (T)	
Medical Unit	Raice Wicklas		Procurement Unit	Tim Myer, Matt Rueckheim (T)	
Food Unit	David Jones		Comp/Claims Unit	Alyssa Hagerman	
Motel Unit	Matt Aldrich		Cost Unit	Suzi Cain	
<b>Prepared By: Name:</b>	Chris Reneau	<b>Position/Title:</b>	DPSC	<b>Signature:</b>	
<b>ICS 203</b>		<b>Date/Time:</b>	8/27/2020 1900		





## FIRE BEHAVIOR FORECAST

<b>FORECAST NUMBER:</b> 12	<b>TYPE OF FIRE:</b> Wildfire
<b>FIRE NAME:</b> River	<b>OPERATIONAL PERIOD:</b> 8/28-29/20 0700-0700
<b>DATE ISSUED:</b> 8/27/20	<b>TIME ISSUED:</b> 2200
<b>UNIT:</b> BEU – San Benito Monterey	<b>SIGNED:</b>  <b>Typed/printed:</b> Don Watt FBAN

### INPUTS

#### WEATHER SUMMARY:

There will be fog in the lower slopes and valleys through 0900. The maximum temperature will be 74-91 degrees, with a minimum humidity of 37-47 percent in the lower slopes and 25-37 in the upper slopes and ridges. Wind will be terrain driven through the morning becoming west to northwest 5-11 mph with gust to 16 mph in the afternoon. Overnight patchy fog will return to the lower slopes and valleys. The temperature will drop to 55-73 degrees, and humidity will be 75-90 percent in the lower slopes and 28-33 percent on the upper slopes and ridges. Winds will turn to downslope 2-6 mph.

### OUTPUTS

#### FIRE BEHAVIOR

##### GENERAL:

The weather will be clear today when the marine layer clears in the lower elevations, this will allow more solar heating of the fuels. Heating of the fuels will increase the activity of smoldering fuels. The areas with incomplete combustion of the fuels and the unburned between the fire line and the fire will become active in the late afternoon. The wind will also increase the activity as it increases in the afternoon as the wind increases ahead of the marine layer. When working in areas with underslung line be aware of smoldering material rolling below the line. Continue to look up into the canopy when working in the oak trees, there may be dead limbs smoldering or internal burning in the tree trunk and limbs.

##### SPECIFIC:

Portions of Division A and D continue to have fire backing towards the control line. These sections will be in the fog belt in the morning and will continue to burn actively after the sun warms the fuels. The southern Portion of Division D and F will increase in activity with the increasing wind, especially on the exposed ridges containing brush fields. The west wide of the fire, in Divisions F, I, and L, there is still the potential for rolling material to ignite fuels on the opposite side of the fire line.

### AIR OPERATIONS

The marine layer will restrict aircraft from the King City Helibase in the morning and early evening.

### SAFETY

Steep terrain can create several hazards, watch you footing and be aware of people and equipment working above you.





# ASSIGNMENT LIST (ICS 204 WF)

CONTROLLED UNCLASSIFIED  
INFORMATION//BASIC

<b>1. Incident Name:</b> <p style="text-align: center; font-weight: bold;">RIVER ZONE</p>	<b>2. Operational Period:</b> Date From: 08/28/20    Date To: 08/29/20 Time From: 0700            Time To: 0700	<b>3. Branch</b> <b>Division</b> <p style="text-align: center; font-size: 2em; font-weight: bold;">I                      D</p> <p style="text-align: center;">Page 1 of 1                      Delta</p>
--	---	--

<b>4. Operations Personnel:</b>	
Operations Section Chief: <b>Mike Wink</b>	Night Ops: <b>Polo Rodriguez</b>
Branch Director: <b>Magnus Jonsson / Rik Valles (T)</b>	Branch Safety: <b>Nathan La Russo / Josh Zazier / Robert McClellan (T)</b>
Division/Group Supervisor: <b>Robert Tanner</b>	Air Attack:

5. Resources Assigned:		** Resources Below in Bold are 12 Hour **					
Resource Identifier	ALS	OFR	Leader	Personnel	Request #	Hours	Reporting Location
STC MMU 9421C		R	Shaun Fairbanks	17	E-14	0700-0700	Puma Rd. x River Rd.
STG TCU 9444G		R	Lavalle West	30	<b>C-4</b>	<b>0700-1900</b>	Puma Rd. x River Rd.
CRW BEU CREW1		R	Damon Jameson	16	<b>C-6</b>	<b>0700-1900</b>	Puma Rd. x River Rd.
<del>DOZ PVT E-52</del> → L		R	Thomas Wilson	2	E-52	0700-1900	Puma Rd. x River Rd.
<del>DOZ PVT E-256</del> → Staging		R	Darrel Landingham	2	E-256	0700-0700	Puma Rd. x River Rd.
DOZ PVT E-261		R	Mathew Harkness	2	E-261	0700-0700	Puma Rd. x River Rd.
WT PVT E-128		R	Lu Estrada	2	E-128	0700-0700	Puma Rd. x River Rd.
WT PVT E-317		R	Dick Sasser	2	E-317	0700-1900	Puma Rd. x River Rd.
<del>WT PVT E-336</del> → Staging		R	Glen Laquaglia	2	E-336	0700-1900	Puma Rd. x River Rd.
GRD PVT E-251		R	Tanner Rhoads	1	E-251	0700-1900	Puma Rd. x River Rd.
VNC CRW 11							

**6. Work Assignments:**  
 Hold fire within established Control lines.  
 Construct control lines as direct as possible.  
 Maintain and improve safe road conditions  
 Perform Tactical Patrol around structures.

**7. Special Instructions:**  
 \*\*Branch Safetys are on a 12 hour shift\*\*

**8. Communications**

Name	Ch	Function	Rx Freq	Rx Tone	Tx Freq	Tx Tone	Notes
NIFC C5	1	COMMAND	169.7500N	146.2 (T5)	167.1000N	146.2 (T5)	TONE 5/LOWER TORO
CDF T31	8	TACTICAL	159.3825	192.8 (T16)	159.3825	192.8 (T16)	
CDF T19	14	AIR TO GRD	159.3600	192.8 (T16)	159.3600	192.8 (T16)	Air to Ground
CALCORD	15	MEDICAL	156.0750N	156.7 (T6)	156.0750N	156.7 (T6)	
GUARD	16	AIRGUARD	168.6250N		168.6250N	110.9 (T1)	EMERGENCY ONLY

**9. Prepared by: Name:** Jordan Weber                      RESL(T)

Signature:

ICS 204                      Date/Time: 8/27/2020    2200                      Personnel Count: 76





# ASSIGNMENT LIST (ICS 204 WF)

CONTROLLED UNCLASSIFIED  
INFORMATION//BASIC

1. Incident Name: <b>RIVER ZONE</b>	2. Operational Period: Date From: 08/28/20    Date To: 08/29/20 Time From: 0700            Time To: 0700	3. Branch                      Division <b>II</b> <b>I/L</b>
4. Operations Personnel:		Page 1 of 1                      India

Operations Section Chief: <b>Mike Wink</b>	Night Ops: <b>Polo Rodriguez</b>
Branch Director: <b>Josh Taylor / Joshua Heinbach (T)</b>	Branch Safety: <b>Nathan La Russo / Josh Zazier / Robert McClellan (T)</b>
Division/Group Supervisor: <b>Brandon Lanning / Mrgan Mason (T)</b>	Air Attack:

5. Resources Assigned:		** Resources Below in Bold are 12 Hour **					
Resource Identifier	ALS	OFR	Leader	Personnel	Request #	Hours	Reporting Location
<del>STF-KCF-5052F</del> → F		R	<b>Manual Defont</b>	16	<b>E-29</b>	<b>0700-1900</b>	34900 Carmel Valley Rd.
STF XTU 5178F		R	Kevin Riggi	1	E-28	0700-0700	34900 Carmel Valley Rd.
ENG BEU 4685		R	<b>James Heck</b>	4	<b>E-5</b>	<b>0700-1900</b>	34900 Carmel Valley Rd.
ENG BEU 4691		R	<b>Shayon Ascaire</b>	4	<b>E-4</b>	<b>0700-1900</b>	34900 Carmel Valley Rd.
<del>STG-CZU-9174G</del> → F		R	<b>James Kelly</b>	33	<b>C-32</b>	<b>0700-1900</b>	34900 Carmel Valley Rd.
<del>CRW-VNC-11</del> → D		R	<b>Brian Heath</b>	20	<b>C-5</b>	<b>0700-1900</b>	34900 Carmel Valley Rd.
WT PVT E-129		R	<b>Keith Curry</b>	1	<b>E-129</b>	<b>0700-1900</b>	34900 Carmel Valley Rd.
WT PVT E-263		R	<b>Jarred Reules</b>	1	<b>E-253</b>	<b>0700-1900</b>	34900 Carmel Valley Rd.

**6. Work Assignments:**  
 Backhaul trash and excess supplies.  
 Perform Tactical Patrol around structures.  
 Identify suppression repair needs.

**7. Special Instructions:**  
 \*\*Branch Directors are on a 12 hour shift\*\*  
 \*\*Branch Safetys are on a 12 hour shift\*\*

**8. Communications**

Name	Ch	Function	Rx Freq	Rx Tone	Tx Freq	Tx Tone	Notes
NIFC C5	1	COMMAND	169.7500N	146.2 (T5)	167.1000N	146.2 (T5)	TONE 5/LOWER TORO
CDF T34	10	TACTICAL	151.4675	192.8 (T16)	151.4675	192.8 (T16)	
CDF T19	14	AIR TO GRD	159.3600	192.8 (T16)	159.3600	192.8 (T16)	Air to Ground
CALCORD	15	MEDICAL	156.0750N	156.7 (T6)	156.0750N	156.7 (T6)	
GUARD	16	AIRGUARD	168.6250N		168.6250N	110.9 (T1)	EMERGENCY ONLY

9. Prepared by: Name:	Jordan Weber	RESL(T)	Signature:
ICS 204	Date/Time: 8/27/2020	2200	Personnel Count: 80





# ASSIGNMENT LIST (ICS 204 WF)

CONTROLLED UNCLASSIFIED  
INFORMATION//BASIC

<b>1. Incident Name:</b> <p style="text-align: center; font-weight: bold;">RIVER ZONE</p>	<b>2. Operational Period:</b> Date From: 08/28/20    Date To: 08/29/20 Time From: 0700        Time To: 0700	<b>3. Branch</b> <b>Division</b> <p style="text-align: center; font-weight: bold; font-size: 1.2em;">FSR</p>
--	---	---

Page 1 of 1

<b>4. Operations Personnel:</b>	
Operations Section Chief: <b>Mike Wink</b>	Night Ops: <b>Polo Rodriguez</b>
Branch Director:	Branch Safety:
Division/Group Supervisor: <b>Timothy Montgomery</b>	Air Attack:

5. Resources Assigned:		** Resources Below in Bold are 12 Hour **					
Resource Identifier	ALS	OFR	Leader	Personnel	Request #	Hours	Reporting Location
DOZ PVT E-37		C	<b>John Blatnik</b>	1	<b>E-37</b>	0700-1900	ICP
DOZ PVT E-213		C	<b>Shane Kirk</b>	1	<b>E-213</b>	0700-1900	ICP
DOZ PVT E-257		R	<b>John Ricker</b>	1	<b>E-257</b>	0700-1900	ICP
DOZ PVT E-259		R	<b>Randy Farmer</b>	1	<b>E-259</b>	0700-1900	ICP
DOZ PVT E-319		R	<b>Pete Van Goale</b>	1	<b>E-319</b>	0700-1900	ICP
DOZ PVT E-333		R	<b>Chael Dusi</b>	1	<b>E-333</b>	0700-1900	ICP
WT PVT E-81		C	<b>Aaron Bento</b>	1	<b>E-81</b>	0700-1900	ICP
WT PVT E-120		C	<b>Frank Schlitz</b>	1	<b>E-120</b>	0700-1900	ICP
WT PVT E-160		C	<b>Jeff Drew</b>	1	<b>E-160</b>	0700-1900	ICP
WT PVT E-169		C	<b>Jim Esery</b>	2	<b>E-169</b>	0700-1900	ICP
WT PVT E-266		R	<b>Nile Hanscom</b>	1	<b>E-266</b>	0700-1900	ICP
WT PVT E-318		R	<b>John Barton</b>	1	<b>E-318</b>	0700-1900	ICP
WT PVT E-334		R	<b>Michael Dusi</b>	1	<b>E-334</b>	0700-1900	ICP
GRD PVT E-252		R	<b>Carlton Cooper</b>	1	<b>E-252</b>	0700-1900	ICP
<b>DOZ E-171</b>							

**6. Work Assignments:**  
 Identify areas within and adjacent to fire area that require road repair or watering.  
 Identify suppression repair needs.  
 Identify additional needs.

**7. Special Instructions:**  
 \*\*Branch Safetys are on a 12 hour shift\*\*

8. Communications							
Name	Ch	Function	Rx Freq	Rx Tone	Tx Freq	Tx Tone	Notes
NIFC C5	1	COMMAND	169.7500N	146.2 (T5)	167.1000N	146.2 (T5)	TONE 5/LOWER TORO
CDF T36	12	TACTICAL	151.1525	192.8 (T16)	151.1525	192.8 (T16)	
CDF T19	14	AIR TO GRD	159.3600	192.8 (T16)	159.3600	192.8 (T16)	Air to Ground
CALCORD	15	MEDICAL	156.0750N	156.7 (T6)	156.0750N	156.7 (T6)	
GUARD	16	AIRGUARD	168.6250N		168.6250N	110.9 (T1)	EMERGENCY ONLY

<b>9. Prepared by: Name:</b>	Jordan Weber	RESL(T)	Signature:
ICS 204	Date/Time: 8/27/2020	2200	Personnel Count: 15



# ICS 205 - INCIDENT RADIO COMMUNICATIONS PLAN

CONTROLLED UNCLASSIFIED  
INFORMATION/BASIC

<b>1. Incident Name:</b> RIVER ZONE Incident Channels		<b>2. Date/Time Prepared</b> Date: 08/27/2020 Time: 2230		<b>3. Operational Period:</b> Date To: 08/29/20 Time To: 0700				
<b>4. Communications</b>								
Ch#	Function	Name	Assigned To	Rx Freq	Rx Tone	Tx Freq	Tx Tone	Notes
1	COMMAND	NIFC C5	RIVER ZONE	169.7500N	146.2 (T5)	167.1000N	146.2 (T5)	ZONE 5/LOWER TORO
2	COMMAND	NIFC C12	RIVER ZONE	173.0375	146.2 (T5)	167.3250	146.2 (T5)	ZONE 5/EASTSIDE
3	COMMAND	NIFC C8	RIVER ZONE	169.5375N	146.2 (T5)	164.7125N	146.2 (T5)	ZONE 5/PALO ESCRITO
4	COMMAND	NIFC C34	RIVER ZONE	173.8250N	146.2 (T5)	165.3625	146.2 (T5)	ZONE 5/JUNIPERO SERRA PEAK
5	COMMAND	NIFC C50	RIVER ZONE	170.7625	146.2 (T5)	162.9375	146.2 (T5)	ZONE 5/FORT ORD
6	TACTICAL	CDF T29	NOT ASSIGNED	151.3475	192.8 (T16)	151.3475	192.8 (T16)	
7	TACTICAL	CDF T30	DIVS P/A	151.3925	192.8 (T16)	151.3925	192.8 (T16)	
8	TACTICAL	CDF T31	DIV D	159.3825	192.8 (T16)	159.3825	192.8 (T16)	
9	TACTICAL	CDF T24	DIV F	151.3325	192.8 (T16)	151.3325	192.8 (T16)	
10	TACTICAL	CDF T34	DIVS I/L	151.4675	192.8 (T16)	151.4675	192.8 (T16)	
11	TACTICAL	CDF T35	NOT ASSIGNED	159.3225	192.8 (T16)	159.3225	192.8 (T16)	
12	TACTICAL	CDF T36	FSR	151.1525	192.8 (T16)	151.1525	192.8 (T16)	
13	TACTICAL	CDF T37	STAGING	159.3375	192.8 (T16)	159.3375	192.8 (T16)	
14	AIR TO GRD	CDF T19	ALL DIVS	159.3600	192.8 (T16)	159.3600	192.8 (T16)	Air to Ground
15	MEDICAL	CALCORD	ALL DIVS	156.0750N	156.7 (T6)	156.0750N	156.7 (T6)	
16	AIRGUARD	GUARD	ALL DIVS	168.6250N		168.6250N	110.9 (T1)	EMERGENCY ONLY
17								
18								
19								
20	AIRGUARD	GUARD	ALL DIVS	168.6250N		168.6250N	110.9 (T1)	EMERGENCY ONLY

**5. Special Instructions**  
 VER 4= 8/25/2020

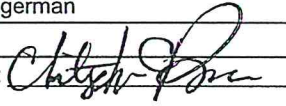
**6. Prepared by (Communications Unit Leader):** Name: CORY COSTA COML(T)  
 Signature: \_\_\_\_\_  
 Date/Time: 08/27/20 2230  
NIMS IAP





CARMEL  
ZONE

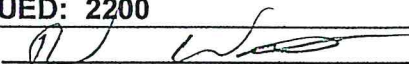
## ORGANIZATION ASSIGNMENT LIST (ICS 203)

<b>1. Incident Name:</b> CARMEL ZONE		<b>2. Operational Period: Date From:</b> 8/28/2020 <b>Date To:</b> 8/29/2020	
		<b>Time From:</b> 0700 <b>Time To:</b> 0700	
<b>3. Incident Commander(s) and Command Staff:</b>		<b>7. Operation Section:</b>	
IC/UC's	Nick Truax, George Huang (T)	Operations	Mike Wink
Deputy	Greg Bertelli	Deputy Operations	Tony Brownell, Merrick Fields (T)
Safety Officer	Dennis Lange, Brad Niven (T)	Night Ops	Polo Rodriguez
Information Officer	Emily Smith, Isaac Sanchez (T)	Staging Area	
Liaison Officer	Brandon Smith, Brandon Gunn (T)	<b>Branch</b>	<b>XI</b> <b>Athony Stornetta (T)</b>
<b>4. Agency/Organization Representatives:</b>		Division/Group	AA/KK      Tyler Gilliam (SBC CRW 10), Samuel Pilson (T)
Agency/Organization	Name	Division/Group	OO/QQ      Kevin Dixon
Monterey Regional Fire	Michael Urquides	Division/Group	
CAL OES	David Franklin	Division/Group	
Monterey CO SO	Jason Smith	Division/Group	
CHP	Kyle Foster	<b>Branch</b>	
USFS	Trenton Pins	Division/Group	
Monterey County OES	Kelsey Scanlon	Division/Group	
Red Cross	Patsi Gasca	Division/Group	
CCC	Miguel Diaz	Division/Group	
PG&E	Geoff Money	Division/Group	
Monterey Farm Bureau	Norm Groot	Staging Area	
Monterey County Parks	Micah Beardsall	Division/Group	
BLM	Dave Slibsager	Division/Group	
CA American Water	Albert Sanchez	Division/Group	
CDCR	Micheal Nilsson	Division/Group	
Monterey County SPCA	Rosanna Leighton	Division/Group	
CA Water Service	Aaron Scott	<b>Branch</b>	
		Division/Group	
<b>5. Planning Section:</b>		Division/Group	
Chief	Chris Carrera	Division/Group	
Deputy	Chris Reneau	Division/Group	
Resource Unit	Paul Carlos, BJ Corey, Jordan Weber (T)	Division/Group	
Situation Unit	Rob DeCamp, Matt Thau (T)	<b>Branch</b>	
Documentation Unit	Janet Arthur	Division/Group	
Demobilization Unit	Ryan Villarino, Keith Swope (T)	Division/Group	
GISS	Tim Werle, Eric Scovel (T)	Division/Group	
FBAN	Don Watt	Division/Group	
IMET	James Dudley	Division/Group	
Training Tech Spec	Dave Randolph	<b>Air Operations Branch</b>	<b>Director:</b> Matt Hill
		Air Support Group Supervisor	Thomas Smith
		Air Tactical Group Supervisor	
<b>6. Logistics Section</b>		Helibase Manager	Peter York
Chief	Jesse Morris, Craig White		
Supply Unit	Lon Story, Mat Brabo (T)	<b>8. Finance/Administration Section:</b>	
Facilities Unit	Jacob Guerra, Travis Heard	Chief	Jack Franklin
Ground Support Unit	Pete Mock, Michael Darcy	Deputy	Bob Counts
Communications Unit	Tom Webb	Time Unit	Shannon Thompson, Al DaSilva (T)
Medical Unit	Raice Wicklas	Procurement Unit	Tim Myer, Matt Rueckheim (T)
Food Unit	David Jones	Comp/Claims Unit	Alyssa Hagerman
Accommodations	Matt Aldrich	Cost Unit	Suzi Cain
<b>Prepared By: Name:</b>	Chris Reneau	<b>Position/Title:</b>	DPSC
<b>ICS 203</b>		<b>Date/Time:</b>	8/27/2020 1900
		<b>Signature:</b>	





## FIRE BEHAVIOR FORECAST

<b>FORECAST NUMBER:</b> 10	<b>TYPE OF FIRE:</b> Wildfire
<b>FIRE NAME:</b> Carmel	<b>OPERATIONAL PERIOD:</b> 8/28-29/20 0700-0700
<b>DATE ISSUED:</b> 8/27/20	<b>TIME ISSUED:</b> 2200
<b>UNIT:</b> BEU – San Benito Monterey	<b>SIGNED:</b> 
	<b>Typed/printed:</b> Don Watt FBAN

### INPUTS

#### WEATHER SUMMARY:

There will be fog in the lower slopes and valleys through 0900. The maximum temperature will be 74-83 degrees, with a minimum humidity of 37-47 percent in the lower slopes and 25-37 in the upper slopes and ridges. Wind will be terrain driven through the morning becoming west to northwest 5-11 mph with gust to 16 mph in the afternoon. Overnight the fog will return to the lower slopes and valleys. The temperature will drop to 55-73 degrees, and humidity will be 75-90. Winds will turn to downslope 2-6 mph.

### OUTPUTS

#### FIRE BEHAVIOR

##### GENERAL:

The weather will be clear today when the marine layer clears in the lower elevations, this will allow more solar heating of the fuels. Heating of the fuels will increase the activity of smoldering fuels. The areas with incomplete combustion of the fuels and the unburned between the fire line and the fire will become active in the late afternoon. The wind will also increase the activity as it increases in the afternoon as the wind increases ahead of the marine layer. When working in areas with underslung line be aware of smoldering material rolling below the line. Continue to look up into the canopy when working in the oak trees, there may be dead limbs smoldering or internal burning in the tree trunk and limbs.

##### SPECIFIC:

Watch for rolling material in the steep terrain, especially in the Carmel River canyon. The areas around the structures will continue to have smoldering material, especially as you move farther out from the buildings, continue to work these areas to reduce the potential for any issues as repopulation continues. The interior fuels will continue to consume as the weather dries out after the marine layer moves out and the sun gets to the fuels. Overnight the marine layer will extinguish the smaller fuels.

### AIR OPERATIONS

The marine layer will restrict aircraft from the King City Helibase in the morning and early evening.

### SAFETY

Steep terrain can create several hazards, watch you footing and be aware of people and equipment working above you.










# ICS 205 - INCIDENT RADIO COMMUNICATIONS PLAN

<b>1. Incident Name:</b> CARMEL ZONE Incident Channels		<b>2. Date/Time Prepared</b> Date: 08/27/2020 Time: 2230		<b>3. Operational Period:</b> Date From: 08/28/20 Time From: 0700 Date To: 08/29/20 Time To: 0700	
--	--	--	--	---	--

4. Communications								
Ch#	Function	Name	Assigned To	Rx Freq	Rx Tone	Tx Freq	Tx Tone	Notes
1	COMMAND	NIFC C31	CARMEL ZONE	172.5500N	146.2 (T5)	162.1875N	146.2 (T5)	TONE 5/CHEWS RIDGE
2	COMMAND	NIFC C8	CARMEL ZONE	169.5375N	146.2 (T5)	164.7125N	146.2 (T5)	TONE 5/PALO ESCRITO
3	COMMAND	NIFC C34	CARMEL ZONE	173.8250N	146.2 (T5)	165.3625	146.2 (T5)	TONE 5/JUNIPERO SERRA PEAK
4	COMMAND	NIFC C5	ALL DIVS	169.7500N	146.2 (T5)	167.1000N	146.2 (T5)	TONE 5/LOWER TORO
5	COMMAND	NIFC C32	CARMEL ZONE	171.0875	146.2 (T5)	164.0125	146.2 (T5)	TONE5/ROBERTS KNOLL
6	COMMAND	NIFC C46	CARMEL ZONE	172.0875	146.2 (T5)	162.1750	146.2 (T5)	TONE 5/PINYON PEAK
7	TACTICAL	CDF T29	NOT ASSIGNED	151.3475	192.8 (T16)	151.3475	192.8 (T16)	
8	TACTICAL	CDF T30	DIV KK/AA	151.3925	192.8 (T16)	151.3925	192.8 (T16)	
9	TACTICAL	CDF T31	FSR	159.3825	192.8 (T16)	159.3825	192.8 (T16)	
10	TACTICAL	CDF T24	NOT ASSIGNED	151.3325	192.8 (T16)	151.3325	192.8 (T16)	
11	TACTICAL	CDF T35	NOT ASSIGNED	159.3225	192.8 (T16)	159.3225	192.8 (T16)	
12	TACTICAL	CDF T36	NOT ASSIGNED	151.1525	192.8 (T16)	151.1525	192.8 (T16)	
13	TACTICAL	CDF T37	DIV OO/QQ	159.3375	192.8 (T16)	159.3375	192.8 (T16)	
14	AIR TO GRD	CDF T15	ALL DIVS	159.2700	192.8 (T16)	159.2700	192.8 (T16)	Air to Ground
15	MEDICAL	CALCORD	ALL DIVS	156.0750N	156.7 (T6)	156.0750N	156.7 (T6)	
16	AIRGUARD	GUARD	ALL DIVS	168.6250N		168.6250N	110.9 (T1)	EMERGENCY ONLY
17								
18								
19								
20	AIRGUARD	GUARD	ALL DIVS	168.6250N		168.6250N	110.9 (T1)	EMERGENCY ONLY

5. Special Instructions

VER 3= 8/25/2020

<b>6. Prepared by (Communications Unit Leader):</b> Name: CORY COSTA COML(T)		Signature: 
ICS 205 - CONTROLLED UNCLASSIFIED INFORMATION/BASIC	NIMS IAP	Date/Time: 08/27/20 2230



RIVER/CARMEL AIR OPERATIONS SUMMARY ICS-220										Time Prepared		Date Prepared		Prepared By	
RIVER ZONE CA-BEU-004024 /CARMEL ZONE CA-BEU-004081		Sunrise 6:33		Startup 7:03		Cutoff 1910		Sunset 1940		1800		Thursday, August 27, 2020		Matt Hill	
Incident Name / Number		Sunrise		Startup		Cutoff		Sunset		Shutdown		Operational Period - Date		Operational Period - Time	
<p>General Remarks, Safety Notes, Hazards, Air Operations Special Equipment, etc.</p> <p>TRACK ALL DIPSITE LOCATIONS / NUMBER OF DIPS / GALLONS TAKEN.</p> <p>TRACK ALL DROP LOCATIONS / NUMBER OF DROPS / GALLONS DROPPED</p> <p>ALL GPS DATA TO BE COLLECTED IN DEGREES, MINUTES, DECIMAL MINUTES, FORMAT.</p> <p><i>AVOID Aerial Application of Retardant / Foam / Agent within 300' of Waterways, Bodies of Water, etc. If Retardant / Foam / Agent is Dropped Within These Areas Immediately Notify the AOB and Provide the Following Information: Lat / Long, Estimated Number of Gallons and a Map Detailing The Area.</i></p> <p>Your Sunrise and Sunset info has not been updated for the current Op period <input type="button" value="Update"/></p>															
Helibase Information		Name King		Latitude 36.13.71		Longitude -121.07.28		Request # A-174		Polygon: NM		Altitude: 6500' MSL		Rescue Ship Information	
Name		Latitude		Longitude		(use page 2 if needed)		Name		Phone		Day Helist		Night Helist	
AOBD		ASGS		HEBIM		HLCO		ATGS		Matt Hill		(530) 708-2707		(831) 233-8180	
FM		AM		AM		FM		FM		Thomas Smith		(530) 386-2147		Peter York	
FM		FM		FM		FM		FM		Stephen Martin		(530) 409-7710			
HELICOPTERS ( Use page 2 if Needed )															
FAA #	Type	Make/Model	Helibase	Avail	Start	Remarks	DIP	LAT	LONG	Remarks					
877XL	3	350-B3	King	0700	0730	HLCO/PAX A-41	Smith	36° 29.05	121° 20.66						
498PT	3	350-B2	King	0700	0730	BUCKET/PAX A-43	Duck Dip	36° 28.85	-121° 40.66						
811KA	2	Bell 212 HP	King	0700	0730	BUCKET/LONGLINE/PAX A-151	Barn Dip	36° 32.39	-121° 39.87						
C-406	2	UH-1H	Bear Valley	0700	0730	TANK/HOIST/PAX A-51	Oak Dip	36° 26.64	-121° 38.64						
							Dam Dip	36° 23.00	-121° 40.11						
							Las Palmas	36° 36.51	-121° 39.41						
							Vineyard	36° 30.74	-121° 31.47						
							Highway	36° 37.35	-121° 41.00						
							Clemente	36° 25.50	-121° 43.68						
							White	36° 26.23	-121° 42.63						
							Wrath	36° 24.57	-121° 22.14						
							Pig	36° 25.77	-121° 36.88						
FIXED WING ( Use Page 2 if Needed )															
FAA #	Type	Make/Model	Base	Avail	Start	Remarks	FAA #	Type	Make/Model	Base	Avail	Start	Remarks		



**SAFETY MESSAGE/PLAN (ICS 208)**

**River:** CA-BEU-004024  
**Carmel:** CA-BEU-004081

Operational Period: Date From: 8/27/20      Date to: 8/28/20  
Time From: 0700      Time to: 0700

**////** MAJOR HAZARDS AND RISKS: **////**

**Driving:**

Drive defensively and use seat belts at all times. Expect the unexpected around every curve. Drive slowly and ensure your headlights are on. Steep, narrow or dusty roads throughout fire area. Maintain safe following distances and appropriate speed when traversing roads. Flag unstable roads and other hazards that may be encountered while driving. Follow posted speed limits while driving in Toro base camp

**Aircraft Operations:**

Use assigned air to ground frequency to communicate with aircraft. Stay clear of both roto wing and fixed wing drop zones. Be clear and concise with your instructions.

**Demob:**

Reference Agency policy for driving and work rest guide lines. Keep alert and do a vehicle safety circle before and after ever stop.

**Fatigue Hydration Nutrition:**

Stay hydrated Seek opportunities to cool and rest when incident allows.  
Be alert for signs of heat stress in yourself and others.  
Drink electrolyte drinks at a 3 water to 1 electrolyte ration.

**Communications:**

Ensure your radio load is current per ICS 205 in the IAP. Place human repeaters as necessary to communicate. Be clear and concise with instructions.

**Power lines:**


Follow Power Line Safety guidelines on pg. 24 of the IRPG.  
Follow FIREScope identification and management of Life Safety Zones procedures, 3 horizontal strands of fire line tape, write "Do not enter" or "Do not cross"

**Hazardous Trees and Snags:**

Be alert of snags. When crews are working in a very hazardous area stay diligent and flag hazardous areas. Avoid taking breaks under trees.

Prepared By: Dennis Lange

Position/Title: SOF1

Signature: 

ICS 208	IAP Page	Date/Time: 8.25.2020 1800
---------	----------	---------------------------



## CAL FIRE IMT COVID-19 ACTIONS

### PERSONNEL WITH COVID-19 SYMPTOMS

- **Symptoms per the CDC's current guidelines include the following:**
  - Cough, fever(100.4), chills, muscle pain, shortness of breath, sore throat, new loss of taste or smell
- **Incident Base or Fire Line**
  - Maintain appropriate face covering
  - Notify supervisor and proceed to CALMAT
  - Isolate and assess patient
  - Medical direction to test, return patient to home unit/agency for testing

### CONTACTED OR EXPOSED PERSONNEL AND ASYMPTOMATIC

- Notify supervisor
- Maintain appropriate face covering
- Self-monitor for symptoms
- Employee will continue assignment with preventative measures

### PREVENTATIVE MEASURES TO SLOW THE TRANSMISSION COVID-19:

- Wash your hands regularly with soap and water, or clean them with alcohol-based hand rub.
- Maintain at least six feet distance between you and people coughing or sneezing.
- Avoid touching your face.
- Cover your mouth and nose when coughing or sneezing.
- Stay home if you feel unwell.
- Refrain from smoking and other activities that weaken the lungs.
- Practice physical distancing by avoiding unnecessary travel and staying away from large groups of people.
- Maintain proper personal care (healthy diet and rest)



## MEDICAL PLAN (ICS 206)

<b>1. Incident Name:</b> <p style="text-align: center; font-size: 1.2em;">River / Carmel Fire</p>		<b>2. Operational Period:</b> Date From: 08/28/2020 Time From: 07:00		<b>Date To:</b> 08/29/2020 <b>Time To:</b> 07:00			
<b>3. Medical Aid Stations:</b> <b>MEDICAL UNIT LEADER:</b> (213) 604-1258 <b>COMMUNICATIONS UNIT:</b> (805) 903-3489							
Name	Location	Contact Number(s)/Frequency	Level of Service				
CAL/MAT	At ICP	530-559-2201	ALS				
MERT	End of Base Camp						
<b>4. Transportation (indicate air or ground):</b>							
Ambulance Service	Location	Contact Number(s)/Frequency	Level of Service				
Cal Star (AIR)	Salinas or Gilroy	Command	ALS				
Cal Fire 406 (HOIST)	Local Unit Response	Command	BLS				
H70 CHP (HOIST)	Paso Robles	Command	ALS				
<b>5. Hospitals:</b>							
Hospital Name	Address, Latitude & Longitude if Helipad	Contact Number(s)/Frequency	Travel Time		Trauma Center	Burn Center	Helipad
			Air	Ground			
SALINAS VALLEY MEMORIAL HOSPITAL	450 E Romie Ln, Salinas, CA 93901	(831) 759-3257	N/A	20 MIN	NO	NO	NO
NATIVIDAD MEDICAL CENTER	1441 Constitution Blvd, Salinas, CA 93906	(831) 647-7611	7 MIN	23 MIN	YES LEVEL 2	NO	YES
Santa Clara Valley Medical Center	751 S Bascom Ave, San Jose, CA 95128	(408) 885-5000	25 MIN	1Hr 15MIN	YES LEVEL 1	YES	YES
COMMUNITY HOSPITAL OF THE MONTEREY PENINSULA	23625 Holman Hwy, Monterey, CA 93940	(831) 624-5311	N/A	20 MIN	NO, Stroke/STEMI	NO	NO
STANFORD HEALTH CARE	300 Pasteur Dr. Stanford, CA 94305	(650) 723-4000	28 MIN	1Hr 45 MIN	YES	NO	YES
<b>6. Special Medical Emergency Procedures:</b> <b>LINE EMERGENCY:</b> Crew Supervisor to contact Division Supervisor with patient complaint/condition, location, and resource needs. <ul style="list-style-type: none"> <li>• Division Supervisor contacts and gives report on conditions, complaint/condition, and resource needs to:                         <ol style="list-style-type: none"> <li>1. Nearest Line FEMT/FEMP</li> <li>2. Communications Unit</li> </ol> </li> <li>• Emergency or Priority traffic received: Communication Unit will clear the command channel for emergency traffic only, for the duration of the MAJOR IWI</li> <li>• Communications Unit will make proper notifications</li> <li>• OPERATIONS can declare a MAJOR IWI based on the report on conditions from the division supervisor</li> <li>• Division Supervisor or designee will serve as point of contact (IWI SUPERVISOR) and run the emergency utilizing the <u>COMMAND CHANNEL</u> and <u>CALCORD</u> for the tac net during the IWI</li> </ul> **ALL EMERGENCIES: Secure the area and identify witnesses for later investigation. Keep an accurate log of events**			<b>BASE CAMP EMERGENCY:</b> <b>CONTACT COMMUNICATIONS UNIT AT: (805) 903-3489</b> report patient complaint/condition and location. Medical Staff will respond to stabilize incident <ul style="list-style-type: none"> <li>• COMMUNICATIONS Unit contacts:                         <ol style="list-style-type: none"> <li>1. Operations</li> <li>2. Medical</li> <li>3. Safety</li> <li>4. Logistics</li> </ol> </li> </ul> <b>INJURY REPORTING PROCEDURES</b> CHIEF COMPLAINT _____ LOCATION OF PATIENT _____ TRANSPORT REQUEST BY: AIR ___ GROUND ___ DIVISION _____ CREW _____ POINT OF PICKUP _____ LAT _____ LONG _____ IS EMT WITH THE PATIENT: YES ___ NO ___ AGE _____ SEX: MALE ___ FEMALE ___  ***START 20 MINUTE TIMER IF IWI***				
7. Prepared by (Medical Unit Leader): Name: DANIEL NUNEZ			Signature:				
8. Approved by (Safety Officer): DENNIS LANGE			Signature:				
ICS 206	IAP Page _____	Date/Time: 08/27/2020 2000					



# RIVER/CARMEL FIRE

## LOGISTICS MESSAGE



### SERVICES SCHEDULE – BASE CAMP

MKU:

Breakfast:	0500-1000
Dinner:	1700-2200
Sack Lunch Distribution:	0600-2000
Laundry Service:	0600-2200
Supply:	0600-2200
Saw Shop:	0600-2200
Radio Repair:	0630-1830
Fuel:	0500-2200
Showers:	24 hr. Service
MERT:	24 hr Service
Cal Mat:	24 hr Service

### REFRIDGERATION TRUCK (ICE, WATER and GATORADE)

Incident Base







# PUBLIC INFORMATION SECTION



**Media Information Line**  
(831) 647-6257



@CALFIREBEU

@CAL\_FIRE

**Public Information Line**  
(925) 532-5455 and 2-1-1



@CALFIREBEU

@CALFIRE

RIVER FIRE STATUS	
<b>Incident Start Date:</b> 8/16/2020	<b>Incident Start Time:</b> 3:04 A.M.
<b>Cause:</b> Lightning	<b>Acres:</b>
<b>Containment:</b>	<b>Total Personnel:</b>

GARMEL FIRE STATUS	
<b>Incident Start Date:</b> 8/18/2020	<b>Incident Start Time:</b> 3:00 P.M.
<b>Cause:</b> Under investigation	<b>Acres:</b>
<b>Containment:</b>	<b>Total Personnel:</b>

**MEDIA** – The California State Penal Code Section 409.5(d) allows the news media to enter scenes of disaster, riot or civil disturbance. Properly identified members of the news media should not be restricted from entering locations specified within the code. However, this does not include crime scenes, private property and does not imply that the news media may interfere with incident operations while they are in the areas of concern.

**CAL FIRE SOCIAL MEDIA POLICY** – When assigned to a CAL FIRE incident, you will adhere to the CAL FIRE Social Media Policy, Section 0691.

**PHOTOGRAPHS AND VIDEOS OF INCIDENT** –The Public Information Office would like copies of the videos and pictures that you may take when *not* engaged in fire suppression activity, duties of your overhead assignment, or in an unsafe environment. Please bring your videos and pictures to the Public Information trailer; they will be reviewed and possibly uploaded to our many CAL FIRE social media sites. Remember, we do not want photographs or videos that depict unsafe, unprofessional or embarrassing circumstances, which are a serious breach of ethics.

**LOST AND FOUND** – The Information Section will manage lost and found items for the incident.

**MAIL DELIVERY** – Although we ask that you no longer have mail delivered to the incident, we will continue to accept outgoing letters.



Incident Updates



Dolan Fire Information



Media Access



CAL FIRE Social Media Policy



**RIVER Inc.**

CA-BEU-004024

**CARMEL Inc.**

CA-BEU-004081



## FINANCE MESSAGE

- Please come by the Time Unit and start your and update your FC-33
- Vendors please drop off your agreements to the Time Unit
- Shift Tickets need to be completed by line supervisor and turned and the end of each shift.
- All injuries need to be reported to the COMP / CLAIMS Unit
- All property Damage must be reported and documented
- Please report any Vehicle Damage this includes Rental Vehicles
- Local Government please check in with OES
- **OFF-SITE FEEDING IS NOT APPROVED**

## **INCIDENT BILLING INFORMATION**

### **CAL FIRE – SAN BENITO MONTEREY UNIT**

2221 GARDEN RD  
MONTEREY, CA 93940

E-fund Billing Code: 013850  
PCA 00900

# SHIFT TICKET EXAMPLE

EMERGENCY SHIFT TICKET and EVALUATION FORM					Contractor Name											
Incident or Project Name <b>WALL</b>			Incident Number <b>CABTU 010975</b>	Request Number <b>E or S # Here</b>	Contractor Name <b>H2O DUDE</b>											
Agreement Number <b>XXX - 000000 - 00</b>					Operator #1 <b>BOB SMITH</b>	Operator #2										
Equipment Make <b>FREIGHTLINER</b>			Equipment Model / Type <b>WATER TENDER 2500 + GAL</b>			Operator Furnished By: <input checked="" type="checkbox"/> Contractor <input type="checkbox"/> Government										
Serial Number <b>1XP3ESMP14239012</b>			Licence Number <b>55555555</b>			Operating Supplies Furnished By: <input checked="" type="checkbox"/> Contractor <input type="checkbox"/> Government										
Equipment Use (Circle) <b>Hours</b> Days / Miles					Equipment Status											
Date Mo / Day	Start	Stop	Work	Assignment	<input checked="" type="checkbox"/> Inspected	<input checked="" type="checkbox"/> Under Agreement										
8/3	0700	1900	12	DIV Z	<input type="checkbox"/> Released by Government	<input type="checkbox"/> Withdrawn by Contractor										
8/4	1900	2400	5	OFF SHIFT	Remarks/Comments **  <b>ONE OPERATOR NO DAMAGE/ NO CLAIMS</b>											
8/4	0001	0700	7	OFFSHIFT												
Vendor Rating					Govt. Rep. Name and Position - PRINT											
<table border="1"> <tr> <th>Poor*</th> <th>Avg.</th> <th>Good</th> <th>Exc.</th> <th>N/A</th> </tr> <tr> <td></td> <td></td> <td></td> <td></td> <td></td> </tr> </table>					Poor*	Avg.	Good	Exc.	N/A						Govt. Rep. Name and Position - PRINT <b>Mike Weber</b>	
Poor*	Avg.	Good	Exc.	N/A												
Met Performance Expectations					Govt. Rep. Signature <i>Mike Weber</i>											
Equipment in Safe Working Condition					Contractor Signature <i>Bob Smith</i>											
Operator Skill Level					Date <b>08/04/15</b>											
Operates Safely					Time <b>0800</b>											
Operator's Cooperation Level					Date <b>08/04/15</b>											
Overall Performance					Time <b>0800</b>											
<p>* NOTE: Any rating of POOR requires an explanation in Comment Section.                  **Final evaluation or for more documentation, use an ICS Form 230 or equivalent.</p>					CALFIRE 297 (Rev 3-2011)											
Pink - Finance		Blue - Home Unit HE Coordinator		Yellow - Vendor		White - Govt Representative										

EMERGENCY SHIFT TICKET and EVALUATION FORM					Contractor Name											
The responsible Government Officer will complete this form each shift					Contractor Name <b>WATER GUY</b>											
Incident or Project Name <b>WALL</b>			Incident Number <b>CABTU 010975</b>	Request Number <b>E OR S # Here</b>	Operator #1 <b>BOB SMITH</b>	Operator #2 <b>BILL SMITH</b>										
Agreement Number <b>XXX - 000000 - 00</b>					Operator Furnished By: <input checked="" type="checkbox"/> Contractor <input type="checkbox"/> Government											
Equipment Make <b>PETERBUILT</b>			Equipment Model / Type <b>WATER TENDER 2500 + GAL</b>			Operating Supplies Furnished By: <input checked="" type="checkbox"/> Contractor <input type="checkbox"/> Government										
Serial Number <b>1XP3ESMP14239012</b>			Licence Number <b>99999999</b>			Equipment Status										
Equipment Use (Circle) <b>Hours</b> Days / Miles					<input checked="" type="checkbox"/> Inspected <input checked="" type="checkbox"/> Under Agreement											
Date Mo / Day	Start	Stop	Work	Assignment	<input type="checkbox"/> Released by Government	<input type="checkbox"/> Withdrawn by Contractor										
8/3	0700	2400	17	DIV M	Remarks/Comments **  <b>2 OPERATORS NO DAMAGE/ NO CLAIMS</b>											
8/4	0001	0700	7	DIV M												
Vendor Rating					Govt. Rep. Name and Position - PRINT											
<table border="1"> <tr> <th>Poor*</th> <th>Avg.</th> <th>Good</th> <th>Exc.</th> <th>N/A</th> </tr> <tr> <td></td> <td></td> <td></td> <td></td> <td></td> </tr> </table>					Poor*	Avg.	Good	Exc.	N/A						Govt. Rep. Name and Position - PRINT <b>Mike Weber</b>	
Poor*	Avg.	Good	Exc.	N/A												
Met Performance Expectations					Govt. Rep. Signature <i>Mike Weber</i>											
Equipment in Safe Working Condition					Contractor Signature <i>Bob Smith</i>											
Operator Skill Level					Date <b>08/04/15</b>											
Operates Safely					Time <b>0800</b>											
Operator's Cooperation Level					Date <b>08/04/15</b>											
Overall Performance					Time <b>0800</b>											
<p>* NOTE: Any rating of POOR requires an explanation in Comment Section.                  **Final evaluation or for more documentation, use an ICS Form 230 or equivalent.</p>					CALFIRE 297 (Rev 3-2011)											
Pink - Finance		Blue - Home Unit HE Coordinator		Yellow - Vendor		White - Govt Representative										

**Turn shift tickets into Finance.**



# SHIFT TICKET EXAMPLE

EMERGENCY SHIFT TICKET and EVALUATION FORM					Contractor Name				
Incident or Project Name <b>LILAC INC</b>		Incident Number <b>CAMVU024612</b>	Request Number <b>E#</b>		Operator #1 <b>BOB SMITH</b>				
Agreement Number <b>XXX - 000000 - 00</b>				Operator #2 <b>TOM SMITH</b>					
Equipment Make <b>CAT</b>		Equipment Model / Type <b>D6XM</b>							
Serial Number <b>FULL VIN#</b>		Licence Number <b>1234567</b>							
Equipment Use (Circle) <b>Hours</b> Days / Miles					Operator Furnished By:				
Date Mo / Day		Start	Stop	Work	<input checked="" type="checkbox"/> Contractor <input type="checkbox"/> Government				
12/8		0700	2400	17	Operating Supplies Furnished By:				
12/9		0001	0700	7	<input checked="" type="checkbox"/> Contractor <input type="checkbox"/> Government				
						Equipment Status			
						<input checked="" type="checkbox"/> Inspected <input checked="" type="checkbox"/> Under Agreement			
						<input type="checkbox"/> Released by Government <input type="checkbox"/> Withdrawn by Contractor			
Remarks/Comments **					<b>2 OPERATORS</b>				
Vendor Rating					Govt. Rep. Name and Position - PRINT				
		Poor*	Avg.	Good	Exc.	N/A	<b>Mike Weber</b>		
Met Performance Expectations								Govt. Rep. Signature	
Equipment in Safe Working Condition								<i>Mike Weber</i>	
Operator Skill Level								Contractor Signature	
Operates Safely								<i>Bob Smith</i>	
Operator's Cooperation Level								Date	
Overall Performance								Time	
								<b>08/04/15</b>	
								<b>0800</b>	
* NOTE: Any rating of POOR requires an explanation in Comment Section. **Final evaluation or for more documentation, use an ICS Form 230 or equivalent.								CALFIRE 297 (Rev 3-2011)	
Pink - Finance		Blue - Home Unit HE Coordinator			Yellow - Vendor		White - Govt Representative		

EMERGENCY SHIFT TICKET and EVALUATION FORM					Contractor Name				
The responsible Government Officer will complete this form each shift					DUDE TRANSPORT				
Incident or Project Name <b>LILAC INC</b>		Incident Number <b>CAMVU 024612</b>	Request Number <b>E #</b>		Operator #1 <b>BOB SMITH</b>				
Agreement Number <b>XXX - 000000 - 00</b>				Operator #2 <b>TOM SMITH</b>					
Equipment Make <b>TRANSPORT/ KENWORTH</b>		Equipment Model / Type <b>COZAD TRAILER /26 WHEELS</b>							
Serial Number <b>1XP3ESMP14239012</b>		Licence Number <b>9999999</b>							
Equipment Use (Circle) <b>Hours</b> Days / Miles					Operator Furnished By:				
Date Mo / Day		Start	Stop	Work	<input checked="" type="checkbox"/> Contractor <input type="checkbox"/> Government				
12/8		0700	2400	17	Operating Supplies Furnished By:				
12/9		0001	0700	7	<input checked="" type="checkbox"/> Contractor <input type="checkbox"/> Government				
						Equipment Status			
						<input checked="" type="checkbox"/> Inspected <input checked="" type="checkbox"/> Under Agreement			
						<input type="checkbox"/> Released by Government <input type="checkbox"/> Withdrawn by Contractor			
Remarks/Comments **					<b>2 OPERATORS</b>				
Vendor Rating					Govt. Rep. Name and Position - PRINT				
		Poor*	Avg.	Good	Exc.	N/A	<b>Mike Weber</b>		
Met Performance Expectations								Govt. Rep. Signature	
Equipment in Safe Working Condition								<i>Mike Weber</i>	
Operator Skill Level								Contractor Signature	
Operates Safely								<i>Bob Smith</i>	
Operator's Cooperation Level								Date	
Overall Performance								Time	
								<b>08/04/15</b>	
								<b>0800</b>	
* NOTE: Any rating of POOR requires an explanation in Comment Section. **Final evaluation or for more documentation, use an ICS Form 230 or equivalent.								CALFIRE 297 (Rev 3-2011)	
Pink - Finance		Blue - Home Unit HE Coordinator			Yellow - Vendor		White - Govt Representative		

**Turn shift tickets into Finance.**









# Training Specialist Message

All State, Federal and Local Government Agency Trainees working on Position Task Books will need to be closed out with the Incident Training Specialist by 1200 on Saturday, August 29<sup>th</sup>. This will ensure that each trainee receive proper credit and documentation for their assignment.

The Training Specialist is in trailer row next to Check -in.

Trainee's will need to bring a completed:

- ✓ Position Task book
- ✓ ICS-225 Incident Personnel Performance Rating
- ✓ Evaluation Record

Don't wait until demobilization to stop by for any questions.

**Dave Randolph**  
**Training Specialist**  
**(805) 857-4820**



## **Archaeological and Historical Sites**

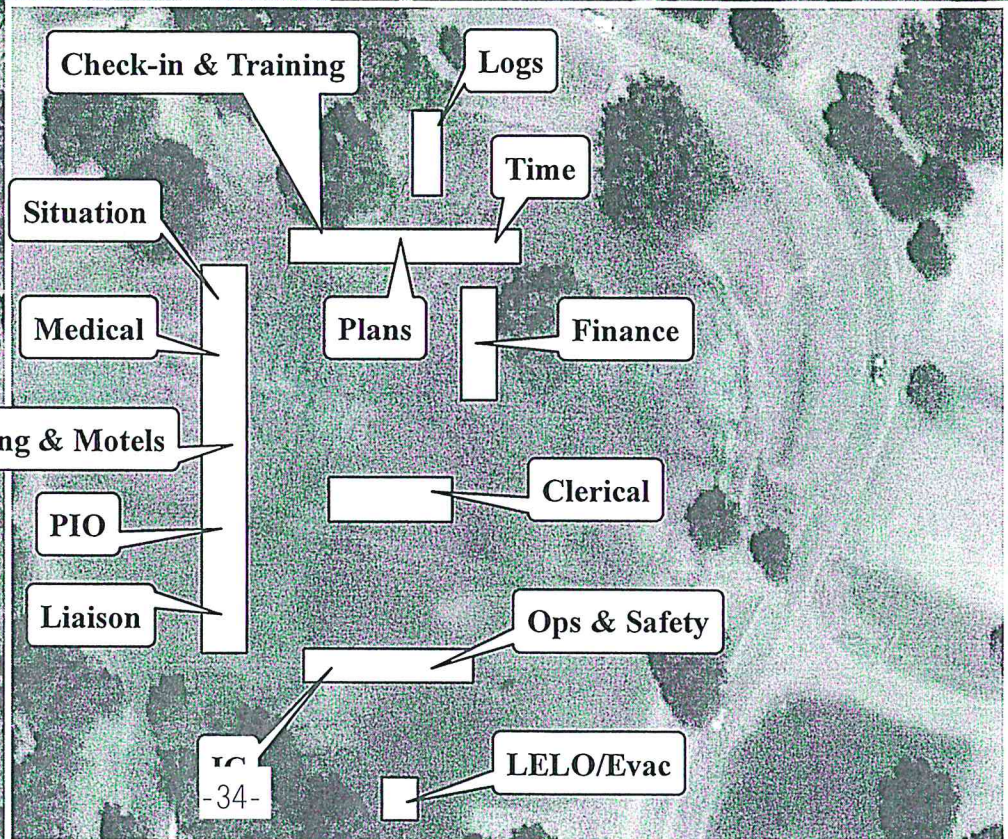
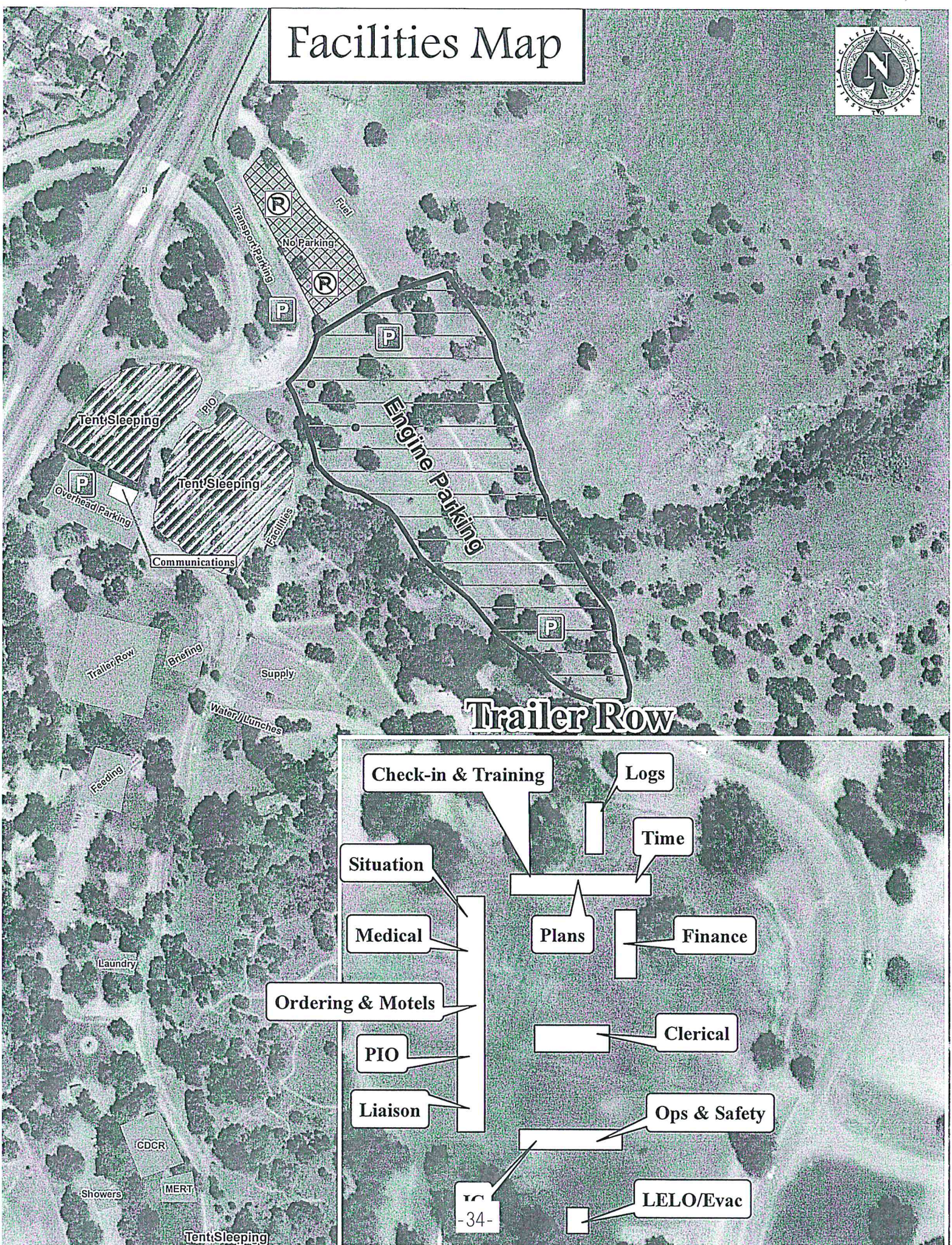
### **Fireline Guidance for the River and Carmel Incidents**

**Do not compromise safety for the protection and preservation of archaeological and historical sites. When feasible and prudent:**

1. Be on the lookout for prehistoric and historic sites. Prehistoric archaeological sites include temporary camps containing scatters of obsidian and/or chert flakes that often look like broken glass. More permanent village sites contain circular depressions (house pits), artifact scatters, grinding holes in rocks (bedrock mortars), and dark brown-black soils (midden). These typically occur on flats near sources of water, along ridgetops and saddles, and other such places suitable for camping. Historic sites include old wooden buildings, structures and corrals, stone buildings, rock foundations, wells, and debris scatters. These kinds of resources can be found in the same kinds of environmental settings as prehistoric camp sites.
2. Some archaeological sites have been flagged with orange and white candy-striped "Special Treatment Zone" flagging. If you encounter a flagged area, heavy equipment should not enter or operate within the area. If such an area is entered or operated in, please inform the State Archaeologist. Any questions regarding flagged sites can be directed to the State Archaeologist.
3. While some sites have been flagged, many have not. If you observe artifacts, features, or sites, attempt to avoid dozing or driving through and/or parking on these sites, if feasible, especially with heavy equipment. If you can't avoid sites, minimize disturbance as much as feasible, only clearing the surface to as minimal a depth and width as necessary.
4. Leave all artifacts in place. Some artifacts may have been intentionally placed for religious or ceremonial reasons.
5. When a site is discovered, flag it for visibility and report its location to the Division Supervisor and/or the State Archaeologist. If feasible, note locations of discovered resources on a map. Better yet, take a GPS reading. Leave information with the Plans Section so that the sites can be relocated and protected during both the suppression and fire suppression repair phases of the Incident.
6. If you encounter a burial or other human remains, cease work in that area immediately and contact the CAL FIRE Archaeologist. State law requires that CAL FIRE then contact the County Coroner, who will then determine if the remains are part of a crime scene. If the Coroner determines that the remains are Native American, State law requires the Coroner to contact the Native American Heritage Commission in Sacramento.



# Facilities Map

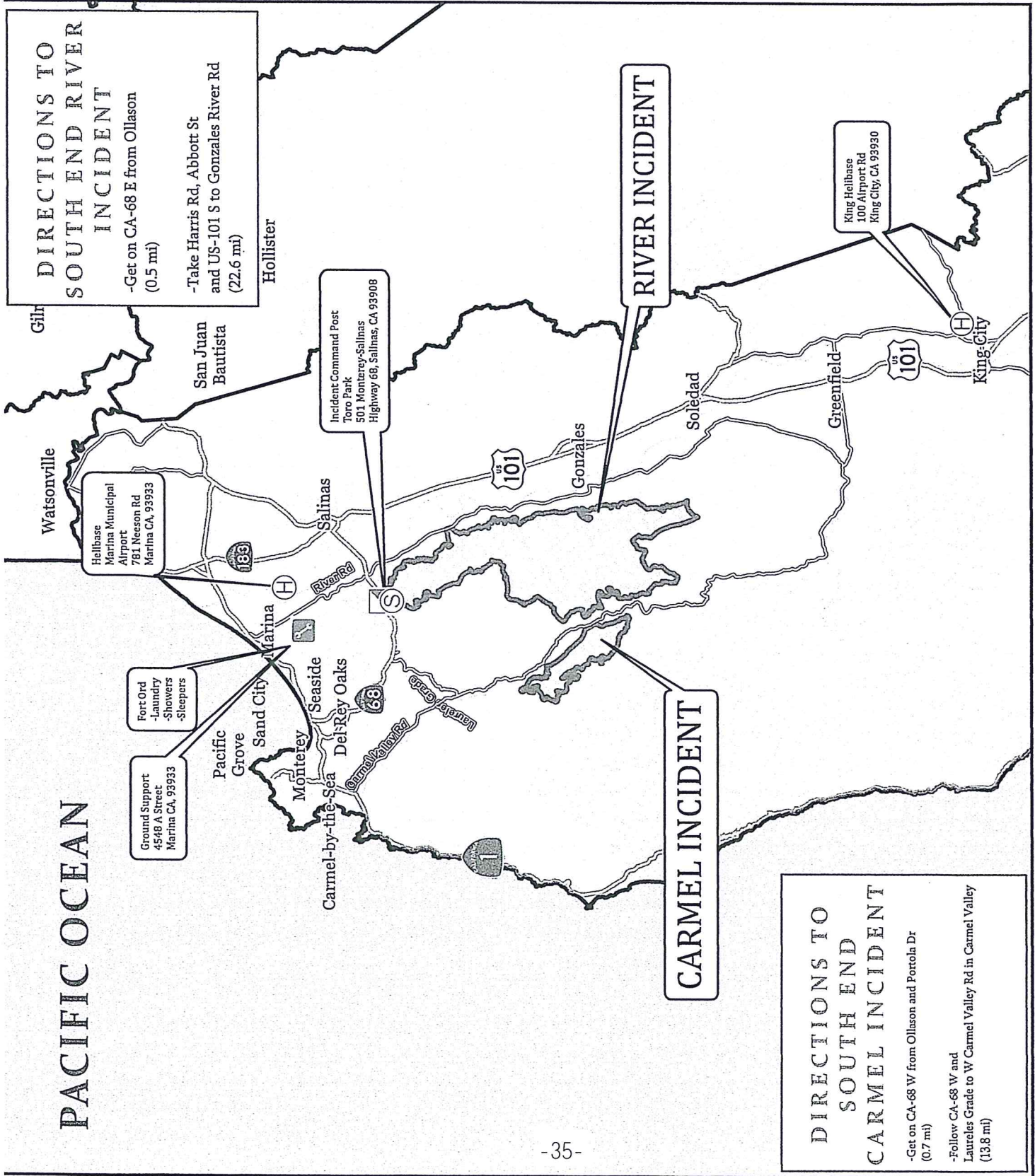




# PACIFIC OCEAN

## DIRECTIONS TO SOUTH END RIVER INCIDENT

- Get on CA-68 E from Ollason (0.5 mi)
- Take Harris Rd, Abbott St and US-101 S to Gonzales River Rd (22.6 mi)



## RIVER INCIDENT

## CARMEL INCIDENT

## DIRECTIONS TO SOUTH END CARMEL INCIDENT

- Get on CA-68 W from Ollason and Portola Dr (0.7 mi)
- Follow CA-68 W and Laureles Grade to W Carmel Valley Rd in Carmel Valley (13.8 mi)

August 28, 2020  
 0700-0700  
 River Incident  
 CA-BEU004024  
 Carmel Incident  
 CA-BEU004081

### LEGEND

	Incident Command Post
	Repeater
	Staging Area
	Ground Support
	Helibase









