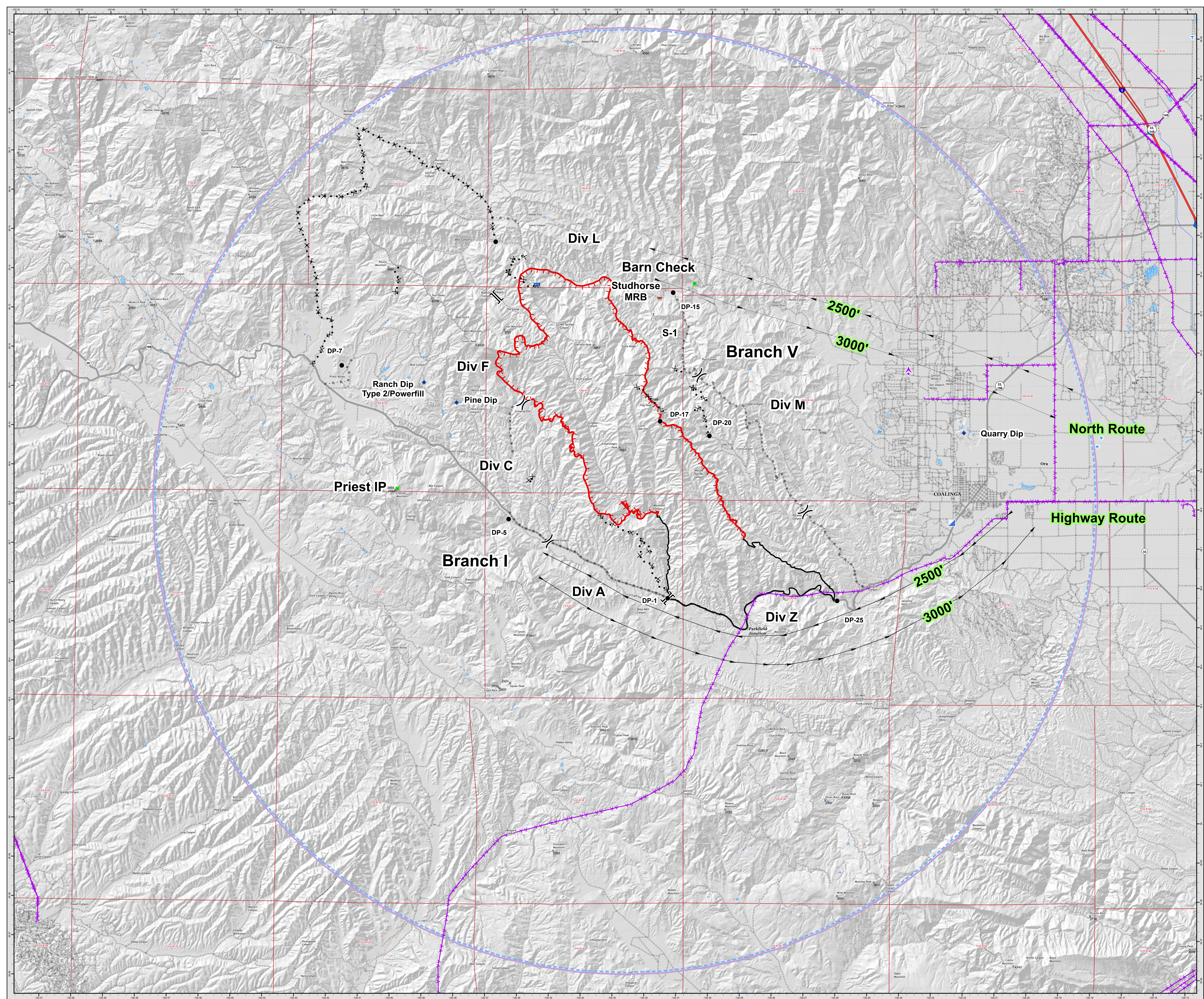




AIR OPERATIONS MAP
MINERAL INCIDENT
 CA FKU 010219
 July 17, 2020

- Division Break
- Branch Break
- Sling Site
- Incident Command Post
- Mobile Weather Unit
- Dip Site
- Drop Point
- Aerial Hazard (Tower)
- Check
- Mobile Retardant Base
- Summits
- Uncontrolled Fire Edge
- Contained Line
- Road as Completed Line
- Proposed Dozer Line
- Transmission Lines
- TFR



NAME	LAT	LONG
Barn Check	36 13.72N	120 30.52W
Pine Dip	36 10.65N	120 38.00W
Priest IP	36 08.45N	120 39.83W
Quarry Dip	36 09.98N	120 32.01W
Ranch Dip Type 2/powerfill	36 11.16N	120 39.03W
S-1 (Sling Site)	36 12.86N	120 31.82W
Studhorse MRB	36 13.356N	120 31.62W

North Route: To fire 2500', To helibase 3000'
 Highway Route: To fire 2500', To helibase 3000'



0 1/4 1/2 3 Miles

1:52,000

DISCLAIMER: The displayed incident data is approximate and should only be used for informational purposes. The information contained in supporting base layers was generated from GIS data maintained by different sources and agencies, and is not necessarily accurate to mapping, surveying, or engineering standards.

IMT 2 GIS
7/17/2020
0647 Hours
NAD 83 Teale Albers