



IAP MAP

Mineral Incident

CA-FKU-010219

July 17, 2020

0700 - 0700

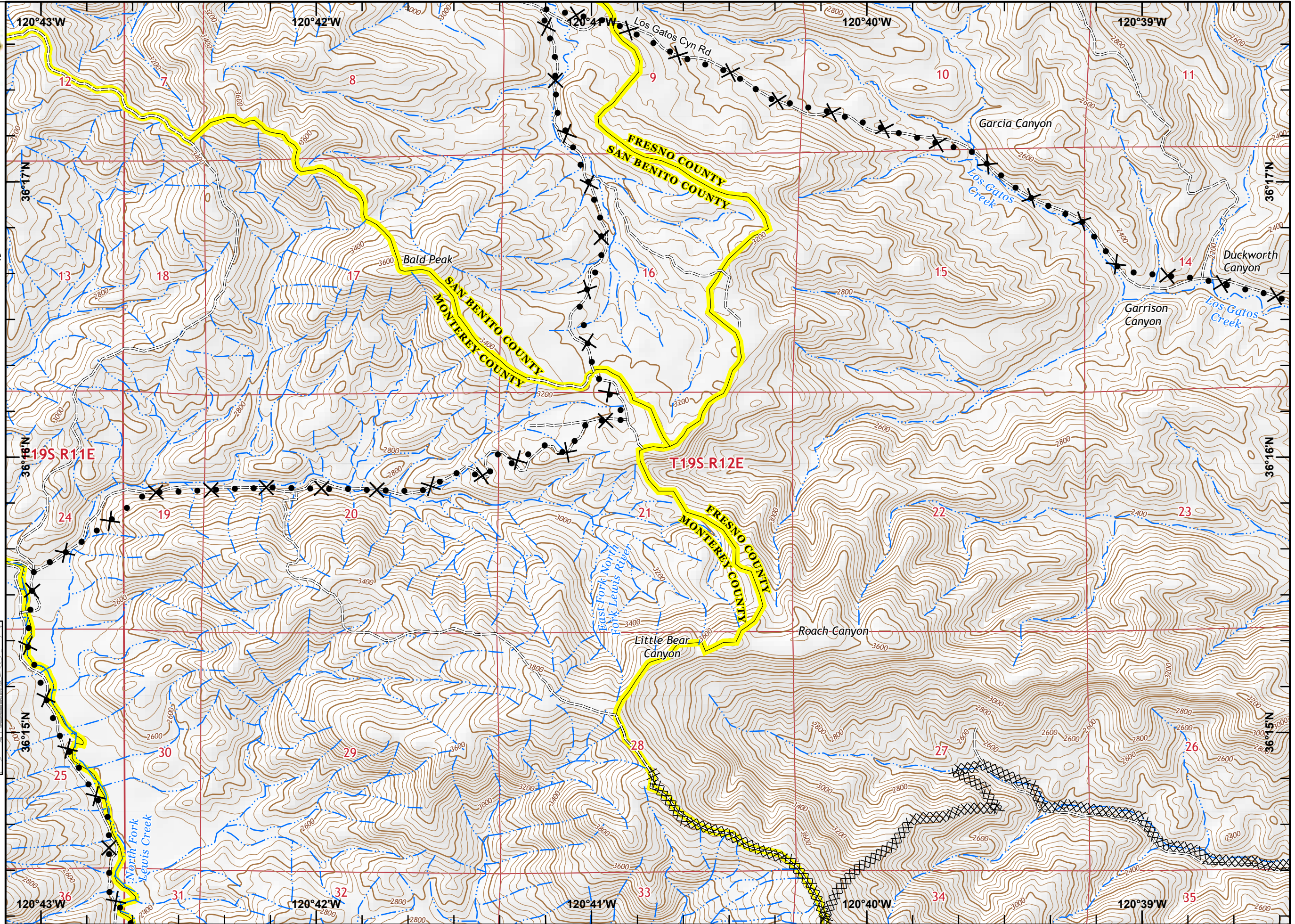
NAD 83

Pg. 1

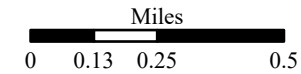
⊗⊗ Completed Dozer Line

X• Proposed Dozer Line

== Local or 4WD road



Pg. 1	Pg. 2	Pg. 3
Pg. 4	Pg. 5	Pg. 6
Pg. 8	Pg. 9	Pg. 10
Pg. 11	Pg. 12	Pg. 13



1:24,000

IMT 2
7/16/2020
23:45 hrs



IAP MAP

Mineral Incident

CA-FKU-010219

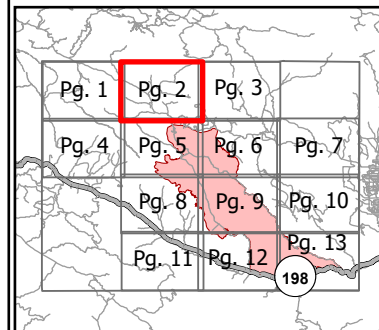
July 17, 2020

0700 - 0700

NAD 83

Pg. 2

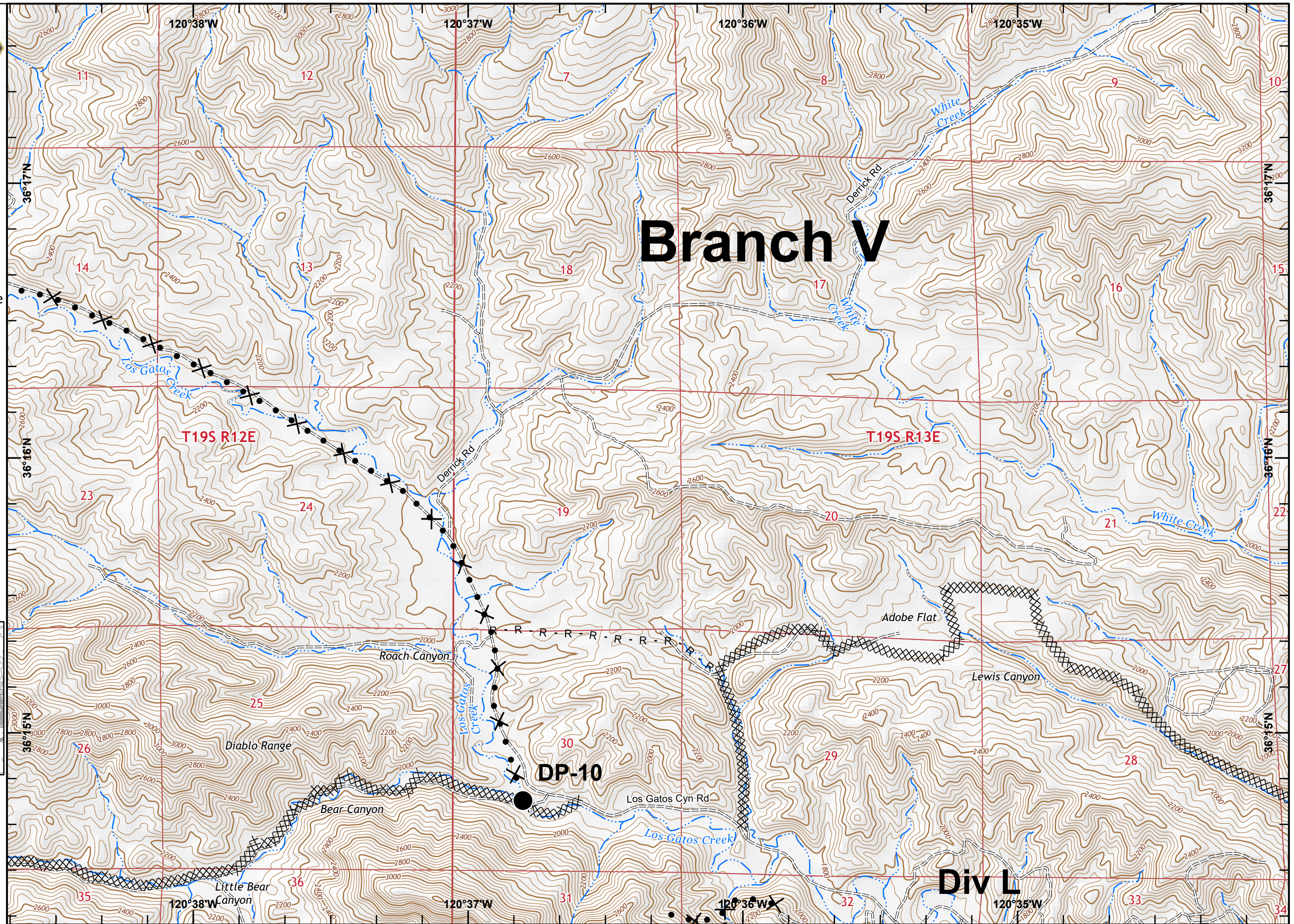
- Drop Point
- ⊗⊗ Completed Dozer Line
- R Road as Completed Line
- X• Proposed Dozer Line
- === Local or 4WD road



Miles
0 0.13 0.25 0.5

1:24,000

IMT 2
7/16/2020
23:46 hrs





IAP MAP

Mineral Incident

CA-FKU-010219

July 17, 2020

0700 - 0700

NAD 83

Pg. 3

⊗⊗ Completed Dozer Line

=== Local or 4WD road

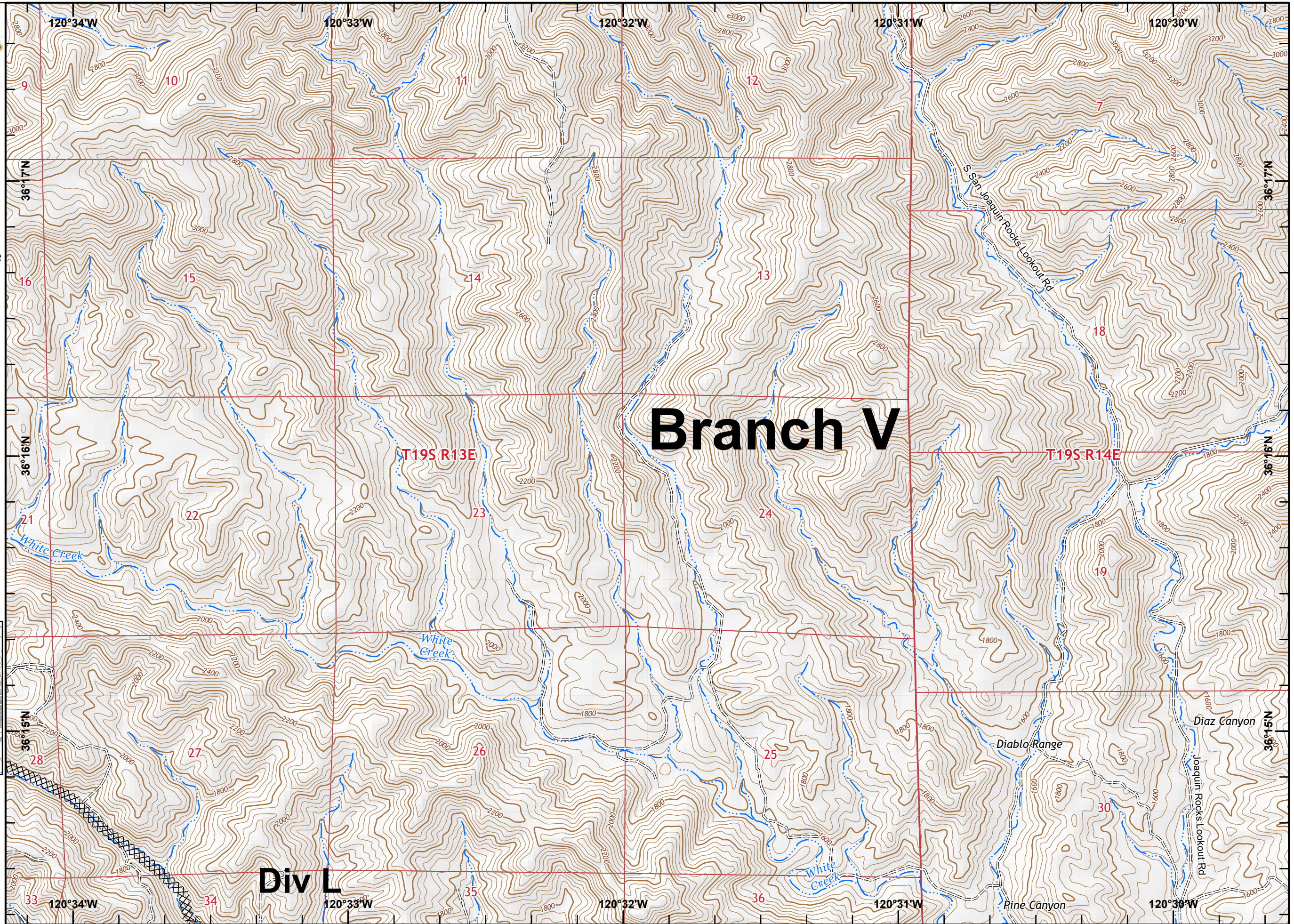
Pg. 1	Pg. 2	Pg. 3	Pg. 4
Pg. 5	Pg. 6	Pg. 7	Pg. 8
Pg. 9	Pg. 10	Pg. 11	Pg. 12
Pg. 13	198		



Miles
0 0.13 0.25 0.5

1:24,000

IMT 2
7/16/2020
23:46 hrs





IAP MAP

Mineral Incident

CA-FKU-010219

July 17, 2020

0700 - 0700

NAD 83

Pg. 4

- Dip Site
- Drop Point
- Completed Dozer Line
- Road as Completed Line
- Proposed Dozer Line
- Local connector
- Local or 4WD road

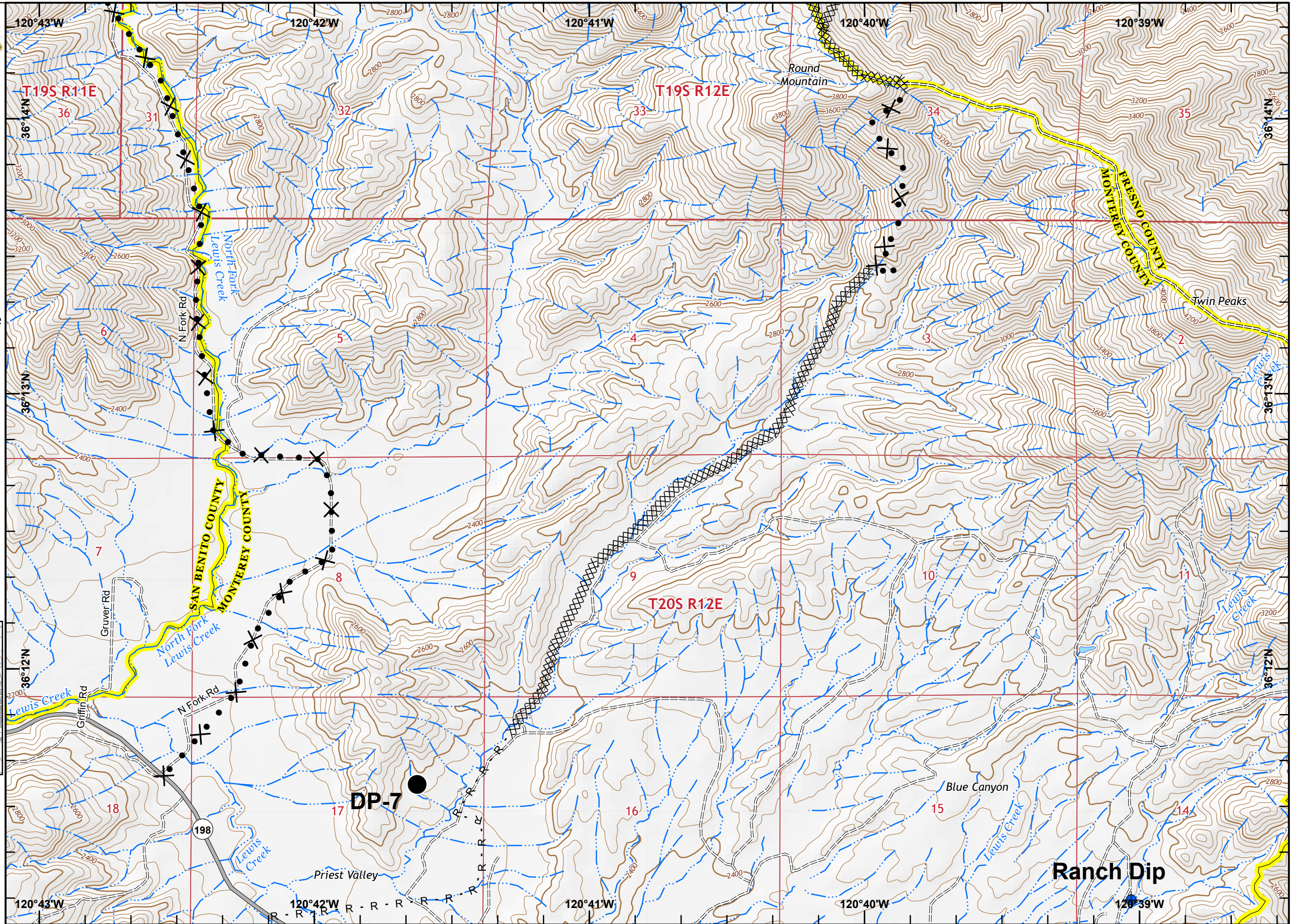
Pg. 1	Pg. 2	Pg. 3
Pg. 4	Pg. 5	Pg. 6
Pg. 8	Pg. 9	Pg. 10
Pg. 11	Pg. 12	Pg. 13



Miles
0 0.13 0.25 0.5

1:24,000

IMT 2
7/16/2020
23:47 hrs





IAP MAP

Mineral Incident






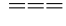
CA-FKU-010219

July 17, 2020

0700 - 0700

NAD 83

Pg. 5

-  Branch Break
-  Mobile Weather Unit
-  Uncontrolled Fire Edge
-  Completed Dozer Line
-  Proposed Dozer Line
-  Local or 4WD road

Branch I

Div L

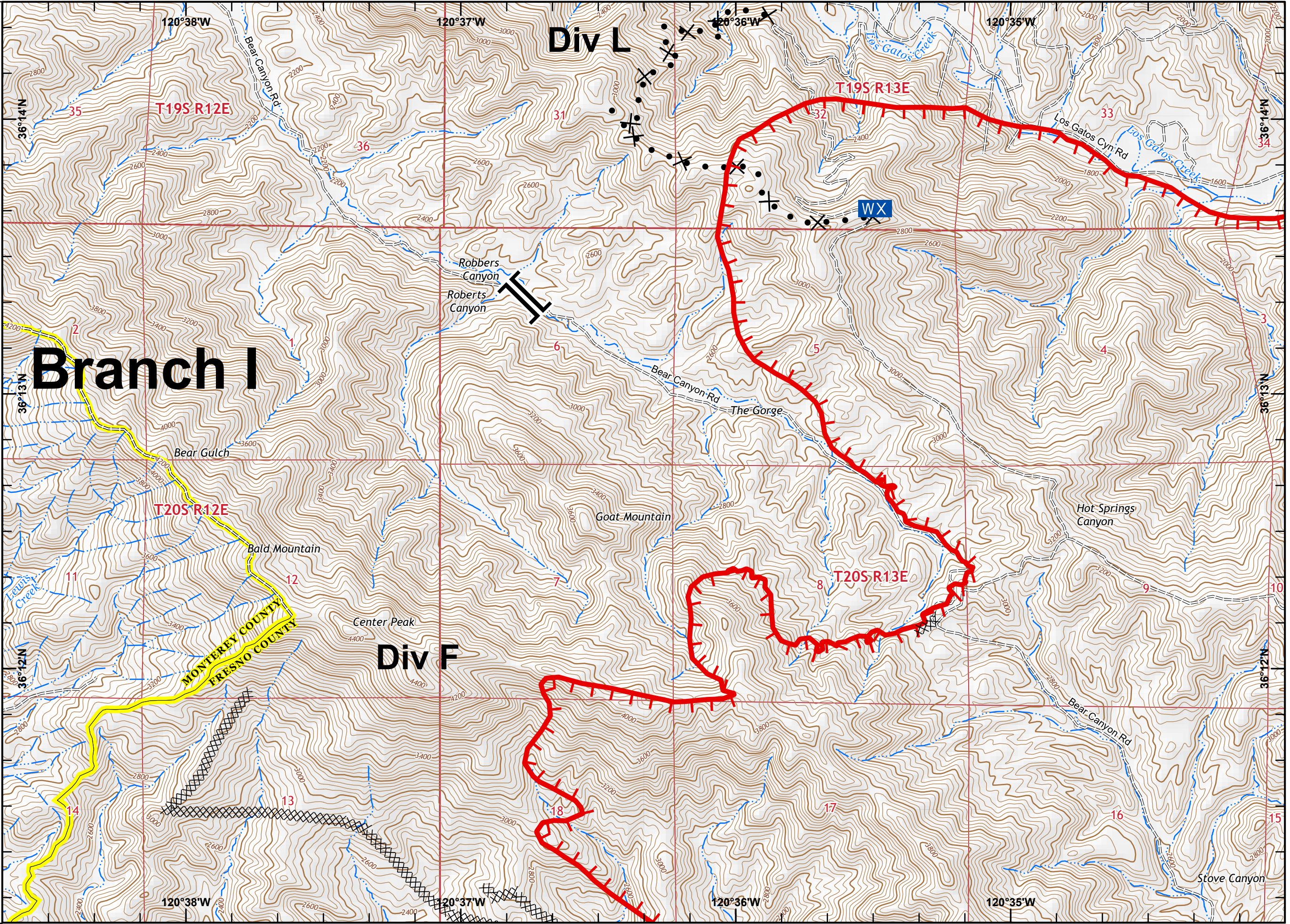
Div F

Pg. 1	Pg. 2	Pg. 3	
Pg. 4	Pg. 5	Pg. 6	Pg. 7
	Pg. 8	Pg. 9	Pg. 10
Pg. 11	Pg. 12	Pg. 13	198



Miles
0 0.13 0.25 0.5

1:24,000
IMT 2
7/16/2020
23:47 hrs





IAP MAP

Mineral Incident

CA-FKU-010219

July 17, 2020

0700 - 0700

NAD 83

Pg. 6

-) Division Break
- Drop Point
- ▲ Sling Site
- ▬ Uncontrolled Fire Edge
- ⊗ Completed Dozer Line
- R Road as Completed Line
- X• Proposed Dozer Line
- === Local or 4WD road

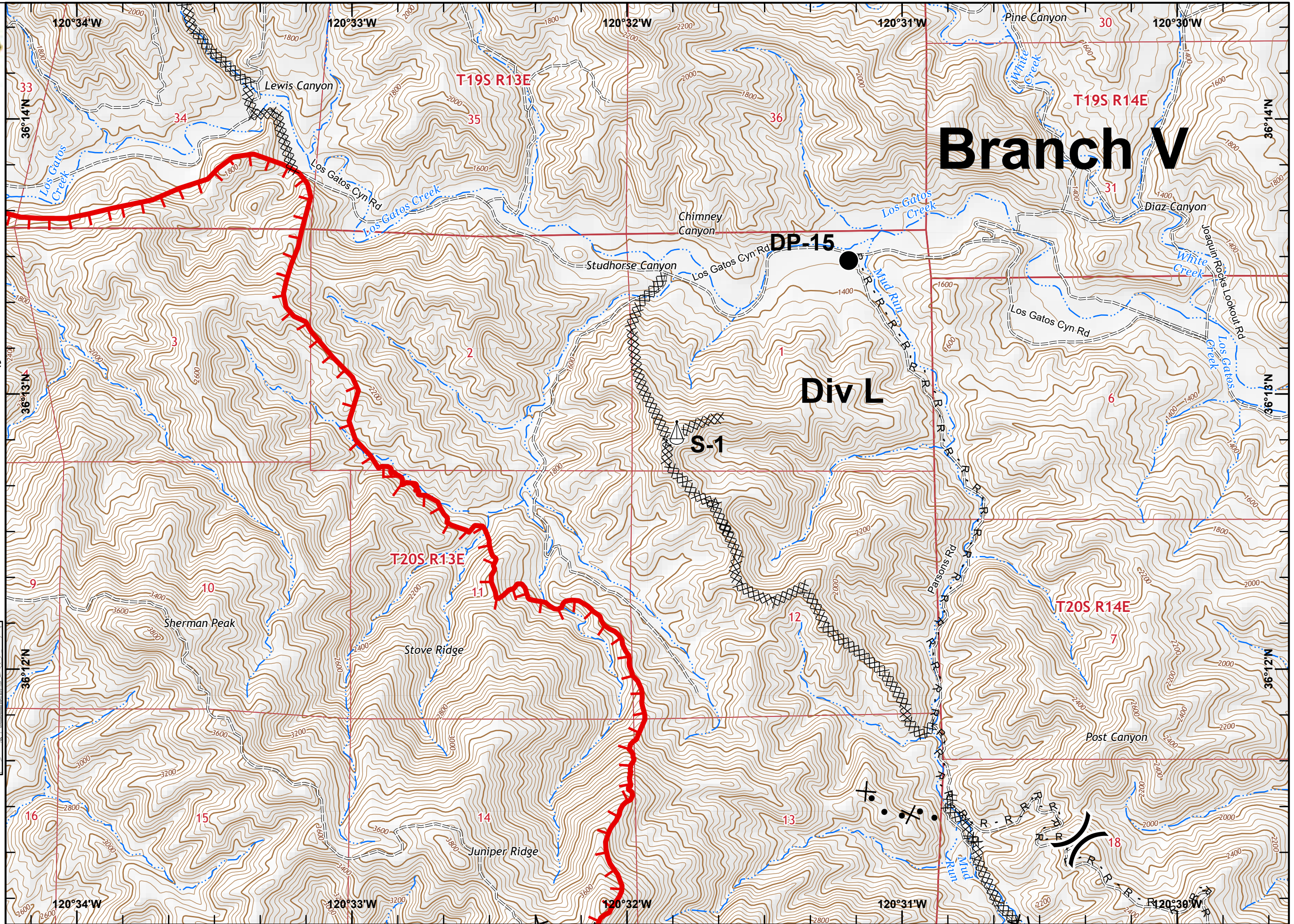
Pg. 1	Pg. 2	Pg. 3
Pg. 4	Pg. 5	Pg. 6
Pg. 8	Pg. 9	Pg. 10
Pg. 11	Pg. 12	Pg. 13



Miles
0 0.13 0.25 0.5

1:24,000

IMT 2
7/16/2020
23:47 hrs





IAP MAP

Mineral Incident

CA-FKU-010219

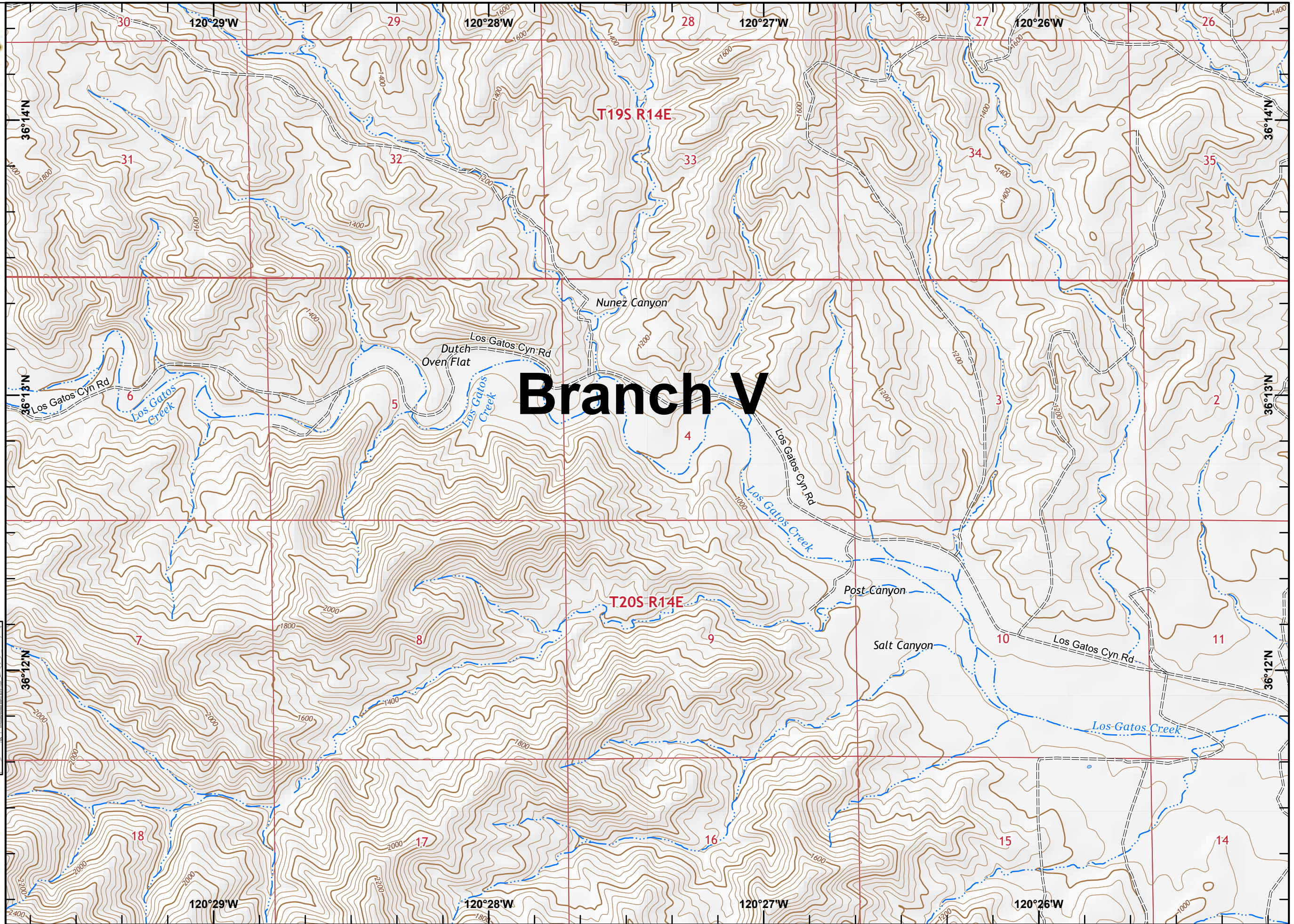
July 17, 2020

0700 - 0700

NAD 83

Pg. 7

Local or 4WD road



Pg. 1	Pg. 2	Pg. 3	Pg. 4
Pg. 5	Pg. 6	Pg. 7	Pg. 8
Pg. 9	Pg. 10	Pg. 11	Pg. 12
Pg. 13	198		



Miles
0 0.13 0.25 0.5

1:24,000

IMT 2
7/16/2020
23:47 hrs



IAP MAP

Mineral Incident

CA-FKU-010219

July 17, 2020

0700 - 0700

NAD 83

Pg. 8

-) Division Break
- Dip Site
- Uncontrolled Fire Edge
- ××× Completed Dozer Line
- R Road as Completed Line
- ×• Proposed Dozer Line
- Local connector
- === Local or 4WD road

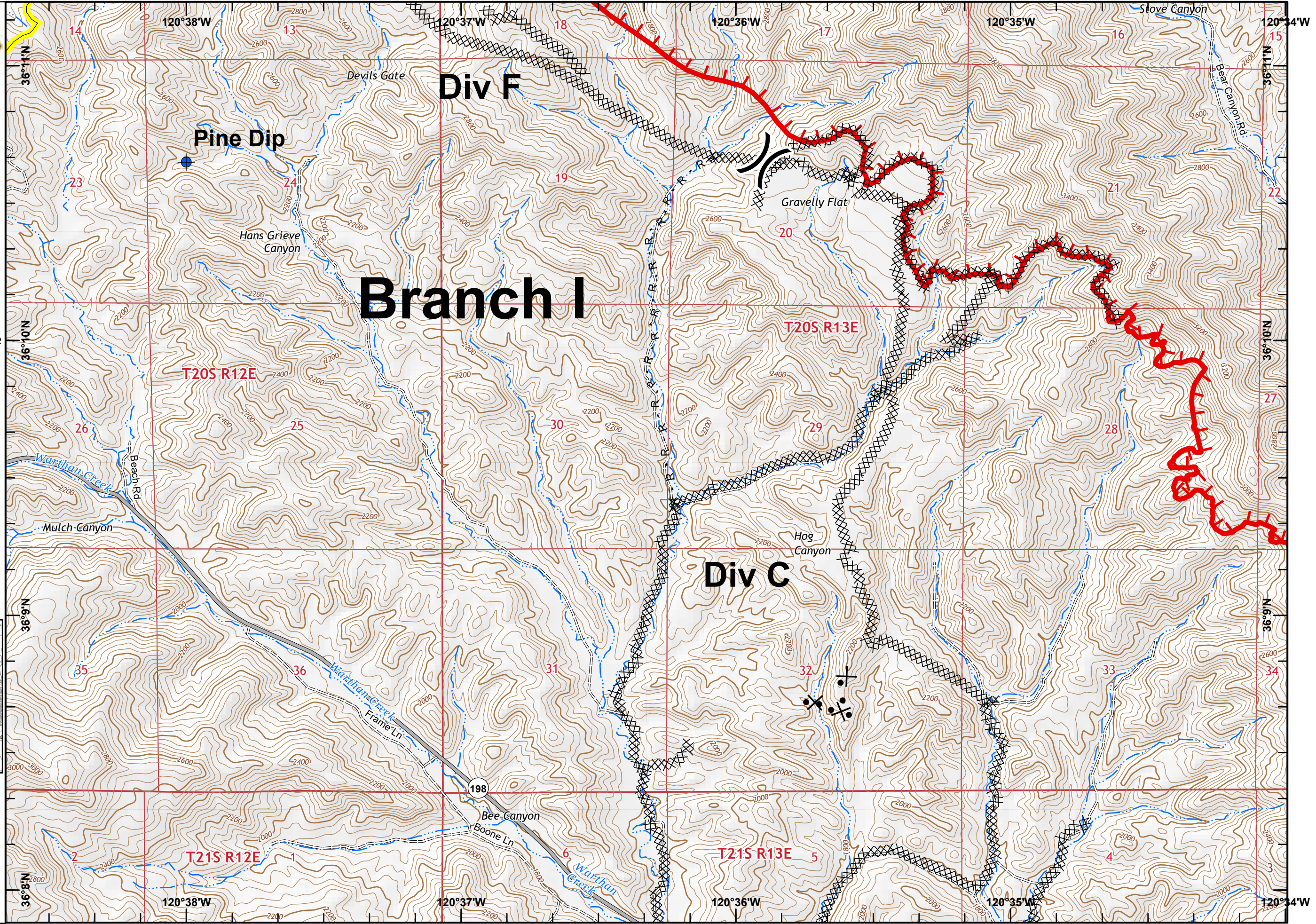
Pg. 1	Pg. 2	Pg. 3	
Pg. 4	Pg. 5	Pg. 6	Pg. 7
Pg. 8	Pg. 9	Pg. 10	
Pg. 11	Pg. 12	Pg. 13	198



Miles
0 0.13 0.25 0.5

1:24,000

IMT 2
7/16/2020
23:47 hrs





IAP MAP

Mineral Incident

CA-FKU-010219

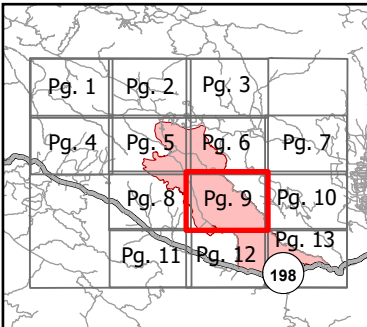
July 17, 2020

0700 - 0700

NAD 83

Pg. 9

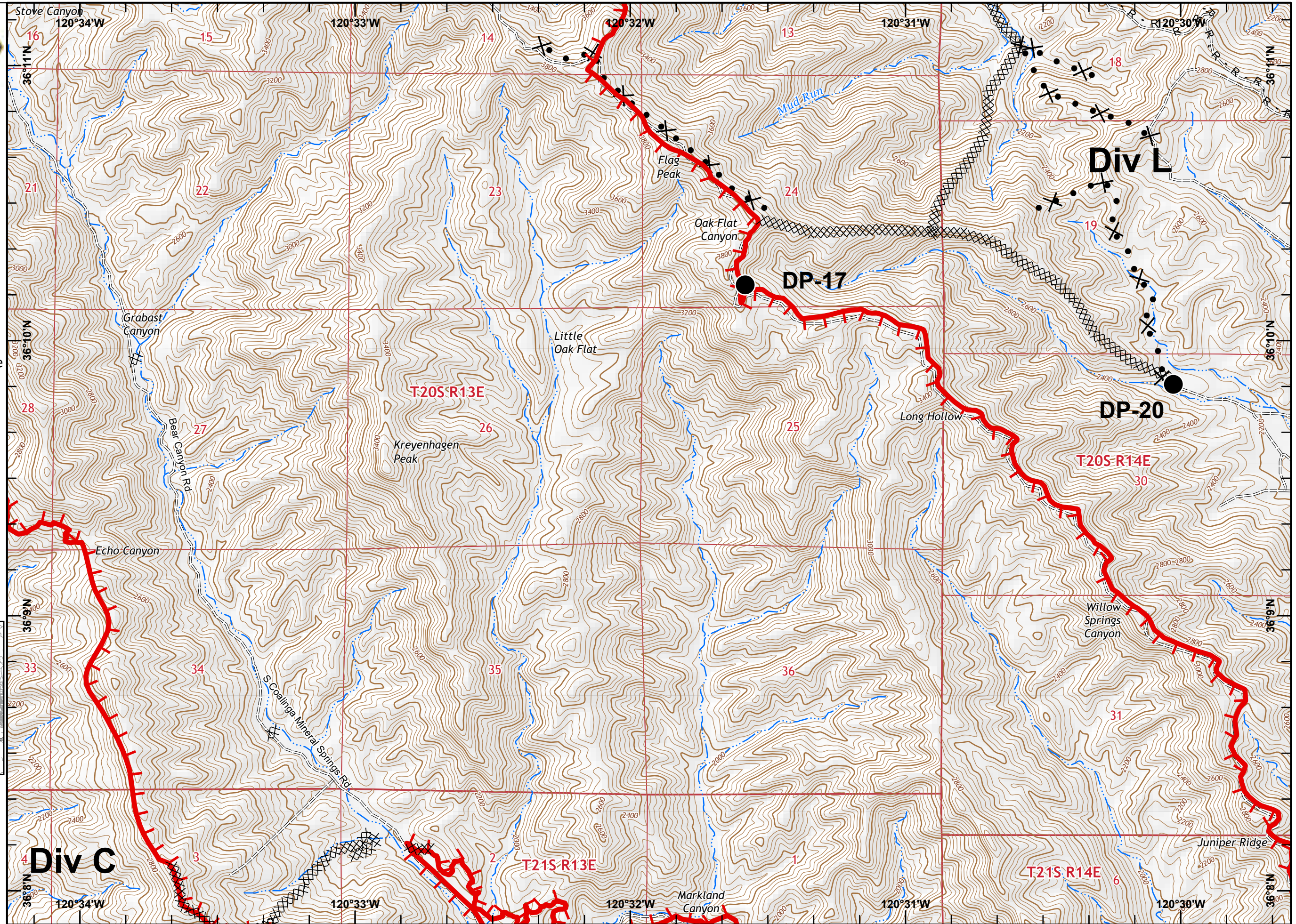
- Drop Point
- Uncontrolled Fire Edge
- Contained Line
- ××× Completed Dozer Line
- H · Completed Hand Line
- R Road as Completed Line
- X• Proposed Dozer Line
- === Local or 4WD road



Miles
0 0.13 0.25 0.5

1:24,000

IMT 2
7/16/2020
23:48 hrs





IAP MAP

Mineral Incident

CA-FKU-010219

July 17, 2020

0700 - 0700

NAD 83

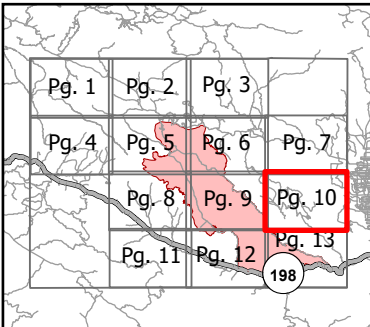
Pg. 10

) Division Break

— Uncontrolled Fire Edge

R Road as Completed Line

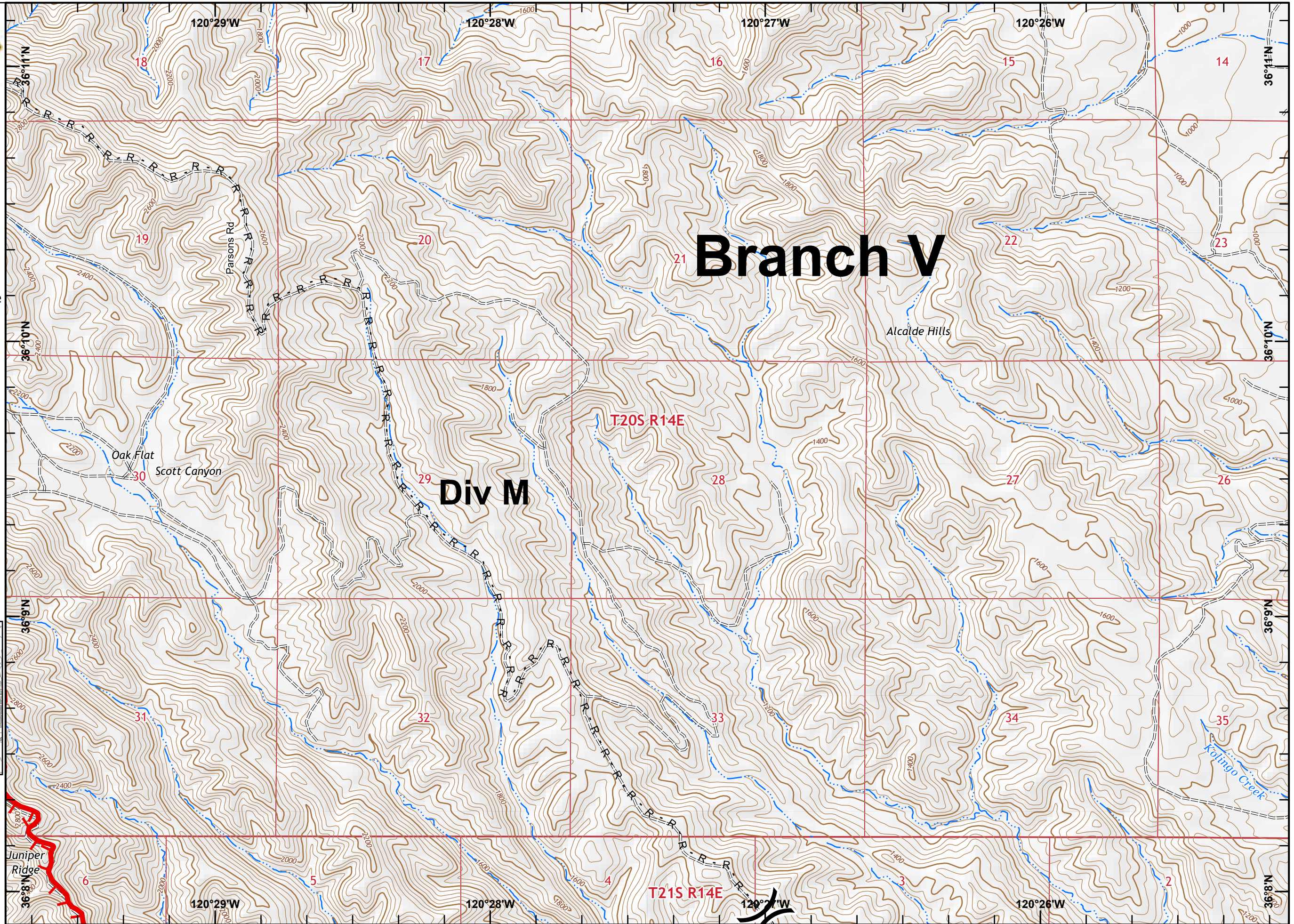
== Local or 4WD road



Miles
0 0.13 0.25 0.5

1:24,000

IMT 2
7/16/2020
23:46 hrs





IAP MAP

Mineral Incident

CA-FKU-010219

July 17, 2020

0700 - 0700

NAD 83

Pg. 11

-) Division Break
- Drop Point
- xx Completed Dozer Line
- R Road as Completed Line
- Local connector
- == Local or 4WD road

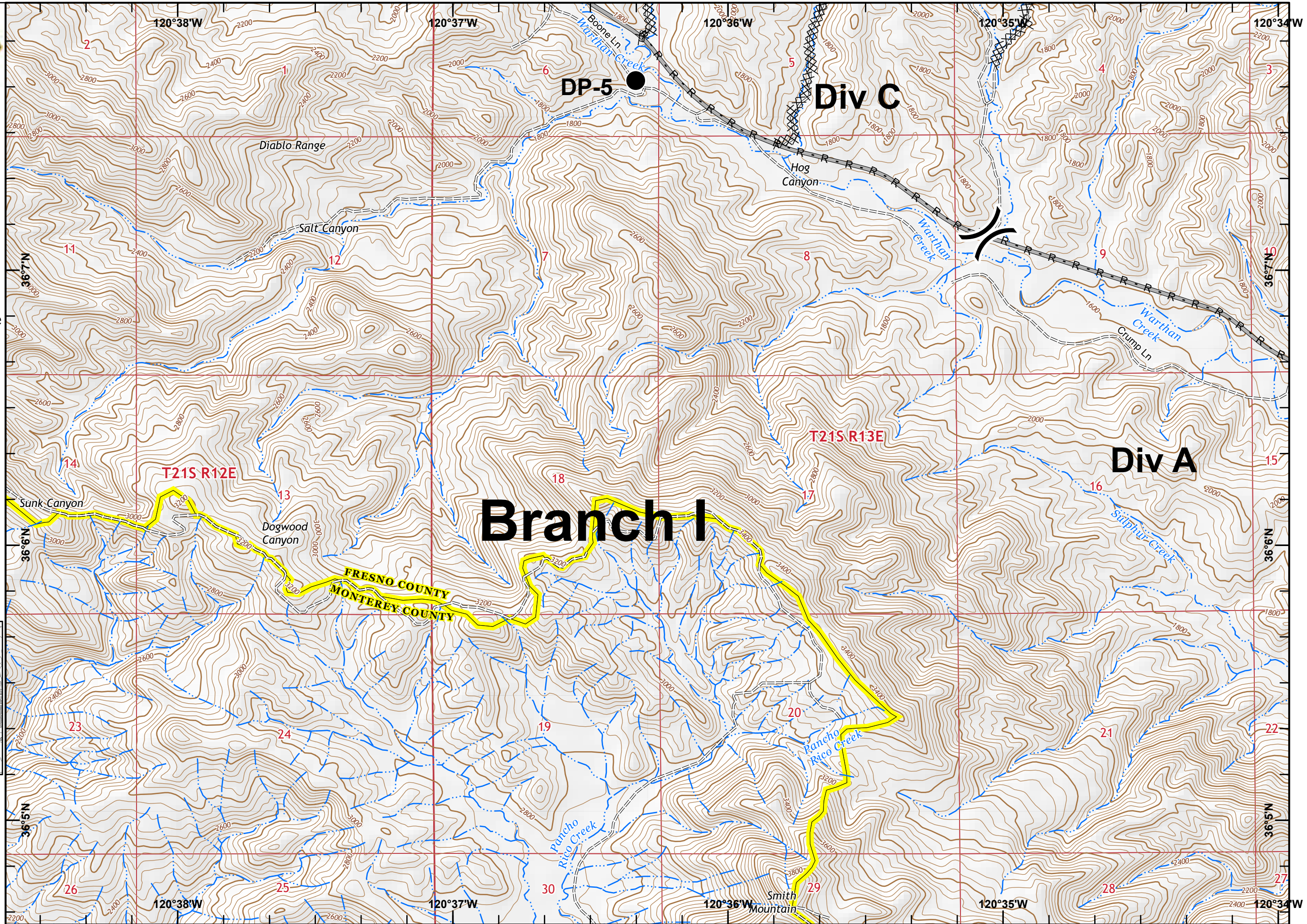
Pg. 1	Pg. 2	Pg. 3	
Pg. 4	Pg. 5	Pg. 6	Pg. 7
Pg. 8	Pg. 9	Pg. 10	
Pg. 11	Pg. 12	Pg. 13	198



Miles
0 0.13 0.25 0.5

1:24,000

IMT 2
7/16/2020
23:46 hrs





IAP MAP

Mineral Incident

CA-FKU-010219

July 17, 2020

0700 - 0700

NAD 83

Pg. 12

- Branch Break
- Drop Point
- Uncontrolled Fire Edge
- Contained Line
- Completed Dozer Line
- Completed Hand Line
- Road as Completed Line
- Proposed Dozer Line
- Local connector
- Local or 4WD road

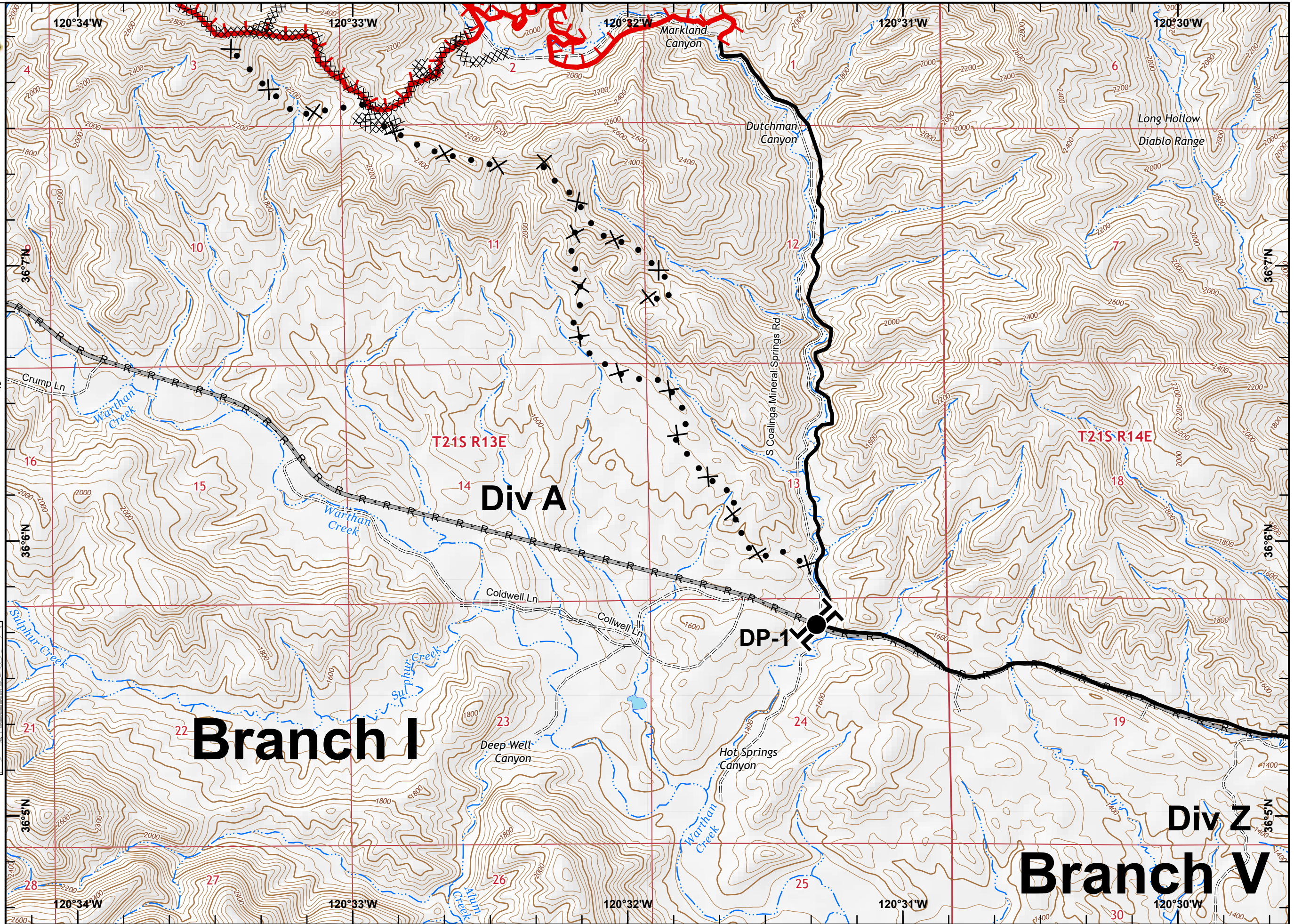
Pg. 1	Pg. 2	Pg. 3	
Pg. 4	Pg. 5	Pg. 6	Pg. 7
Pg. 8	Pg. 9	Pg. 10	
Pg. 11	Pg. 12	Pg. 13	198



Miles
0 0.13 0.25 0.5

1:24,000

IMT 2
7/16/2020
23:46 hrs





IAP MAP

Mineral Incident

CA-FKU-010219

July 17, 2020

0700 - 0700

NAD 83

Pg. 13

-) Division Break
- Drop Point
- ▬ Uncontrolled Fire Edge
- ▬ Contained Line
- ▨ Completed Dozer Line
- R Road as Completed Line
- ▬ Local connector
- ▬▬ Local or 4WD road

Pg. 1	Pg. 2	Pg. 3	
Pg. 4	Pg. 5	Pg. 6	Pg. 7
Pg. 8	Pg. 9	Pg. 10	
Pg. 11	Pg. 12	Pg. 13	
		198	



Miles
0 0.13 0.25 0.5

1:24,000

IMT 2
7/16/2020
23:46 hrs

