



IAP MAP

Mineral Incident

CA-FKU-010219

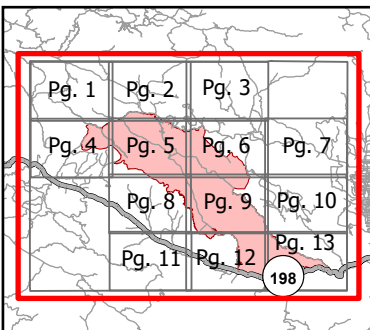
July 20, 2020

0700 - 0700

NAD 83

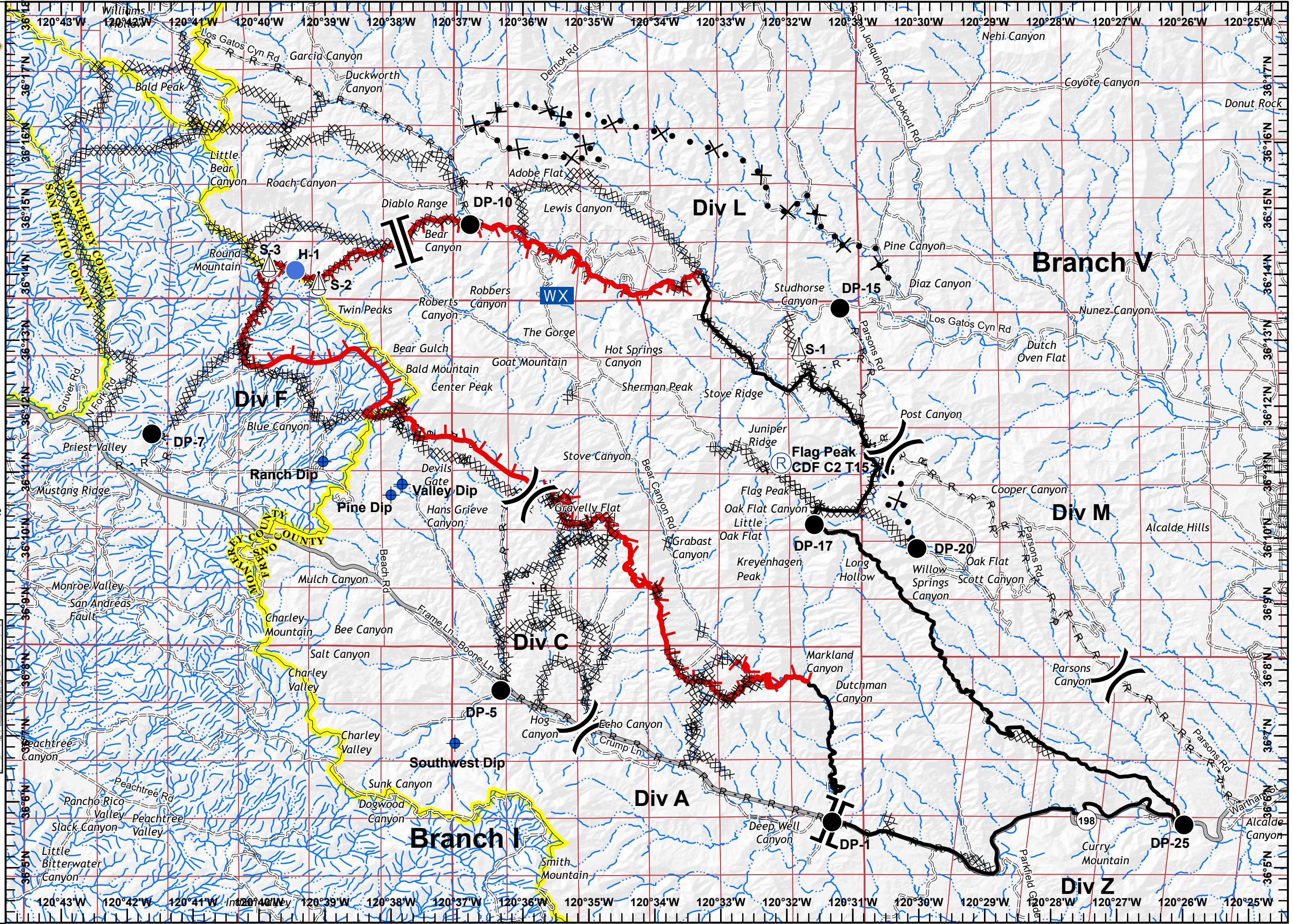
Index

- ⌋ Branch Break
-) Division Break
- Dip Site
- Drop Point
- Helispot
- ☒ Mobile Weather Unit
- Ⓡ Repeater
- ⚙ Sling Site
- Uncontrolled Fire Edge
- Contained Line
- ⊗ Completed Dozer Line
- H - Completed Hand Line
- R Road as Completed Line
- ×• Proposed Dozer Line
- Local connector
- == Local or 4WD road
- ▭ County Boundaries



Miles
0 0.53 1.05 2.1

1:100,000
IMT 2
7/20/2020
00:04 hrs





IAP MAP

Mineral Incident


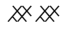
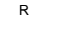
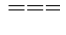

CA-FKU-010219

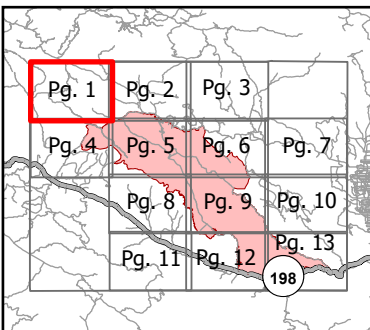
July 20, 2020

0700 - 0700

NAD 83

Pg. 1

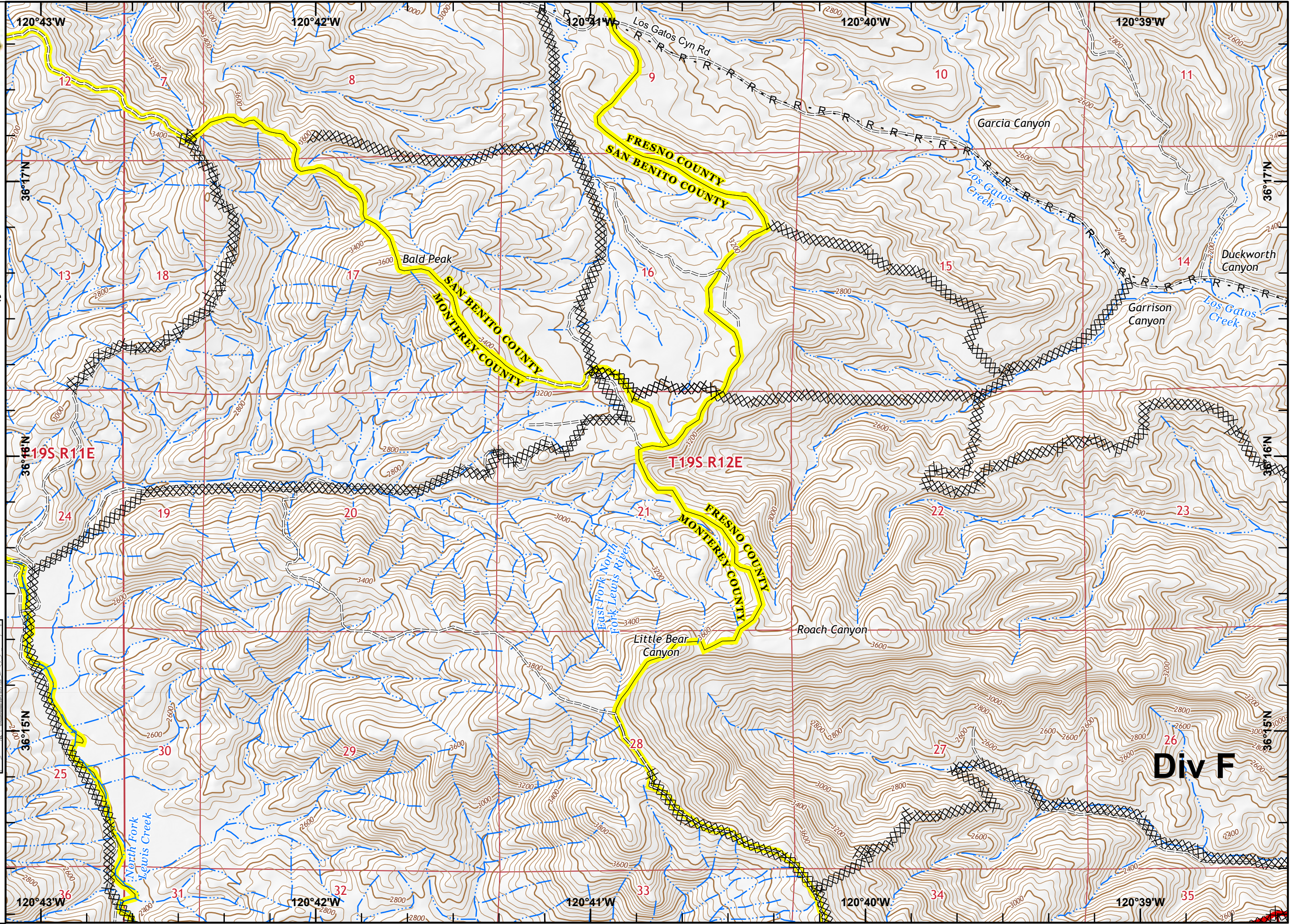
-  Uncontrolled Fire Edge
-  Completed Dozer Line
-  Road as Completed Line
-  Local or 4WD road
-  County Boundaries



Miles
0 0.13 0.25 0.5

1:24,000

IMT 2
7/20/2020
00:05 hrs



Div F



IAP MAP

Mineral Incident

CA-FKU-010219

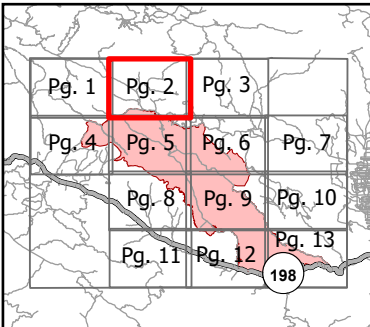
July 20, 2020

0700 - 0700

NAD 83

Pg. 2

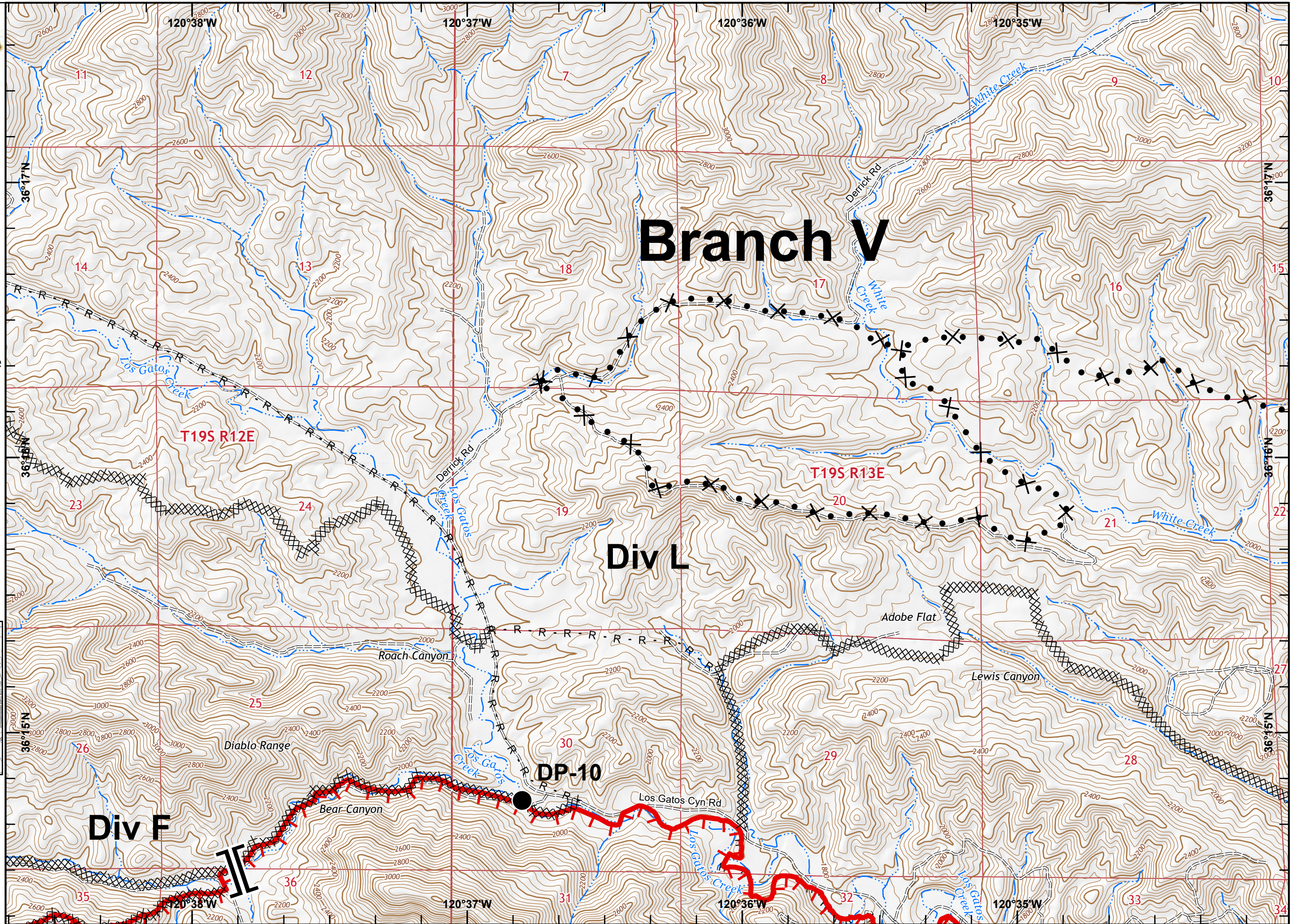
- Branch Break
- Drop Point
- Uncontrolled Fire Edge
- Completed Dozer Line
- Completed Hand Line
- Road as Completed Line
- Proposed Dozer Line
- Local or 4WD road
- County Boundaries



Miles
0 0.13 0.25 0.5

1:24,000

IMT 2
7/20/2020
00:05 hrs





IAP MAP

Mineral Incident

CA-FKU-010219

July 20, 2020

0700 - 0700

NAD 83

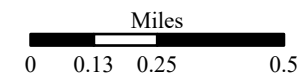
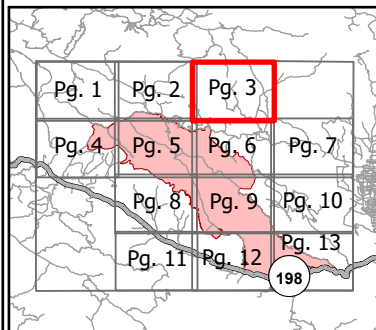
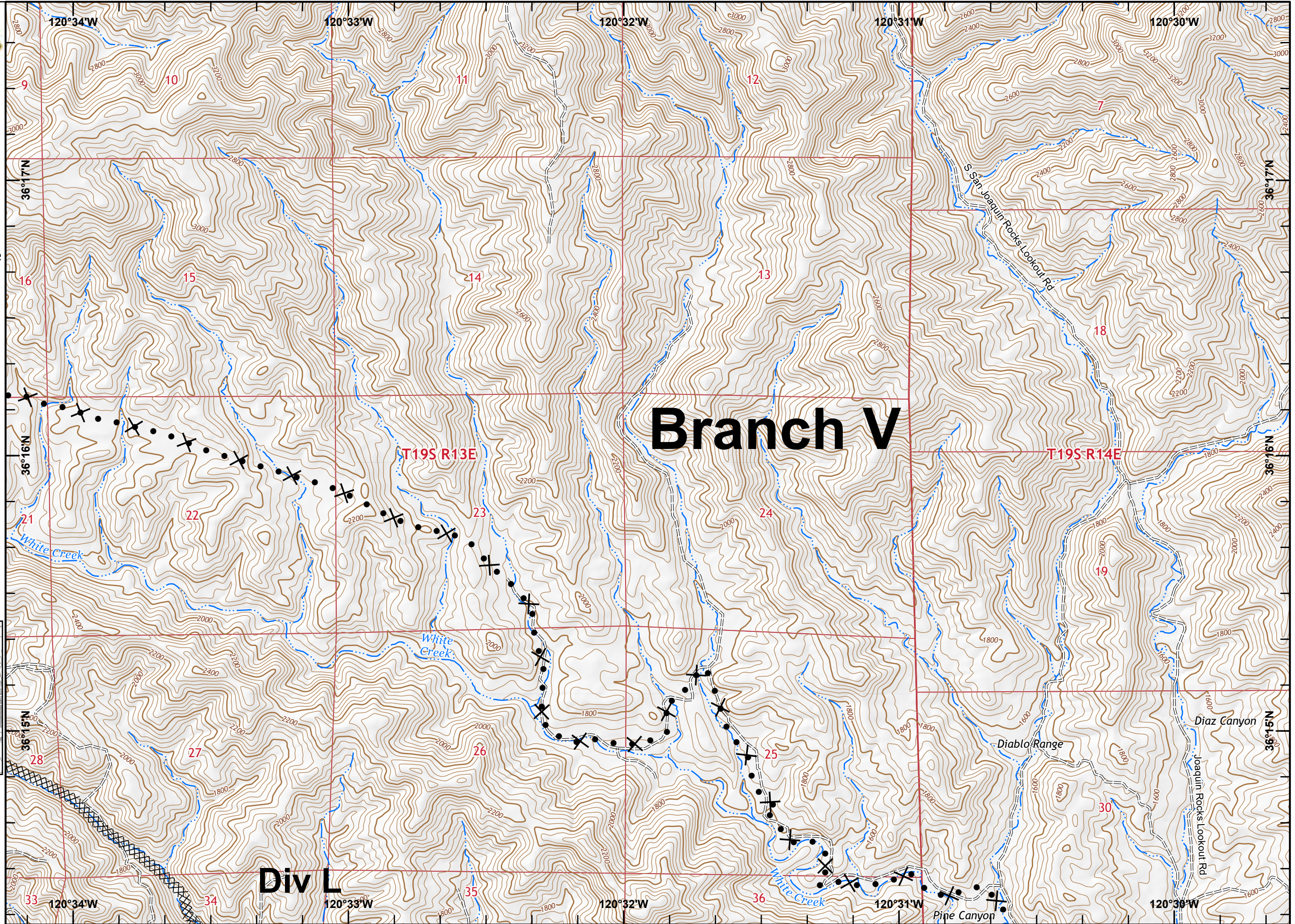
Pg. 3

⊗⊗ Completed Dozer Line

X• Proposed Dozer Line

=== Local or 4WD road

▬ County Boundaries



1:24,000

IMT 2
7/20/2020
00:06 hrs



IAP MAP

Mineral Incident

CA-FKU-010219

July 20, 2020

0700 - 0700

NAD 83

Pg. 4

- Dip Site
- Drop Point
- Helispot
- Sling Site
- Uncontrolled Fire Edge
- Completed Dozer Line
- Completed Hand Line
- Road as Completed Line
- Local connector
- Local or 4WD road
- County Boundaries

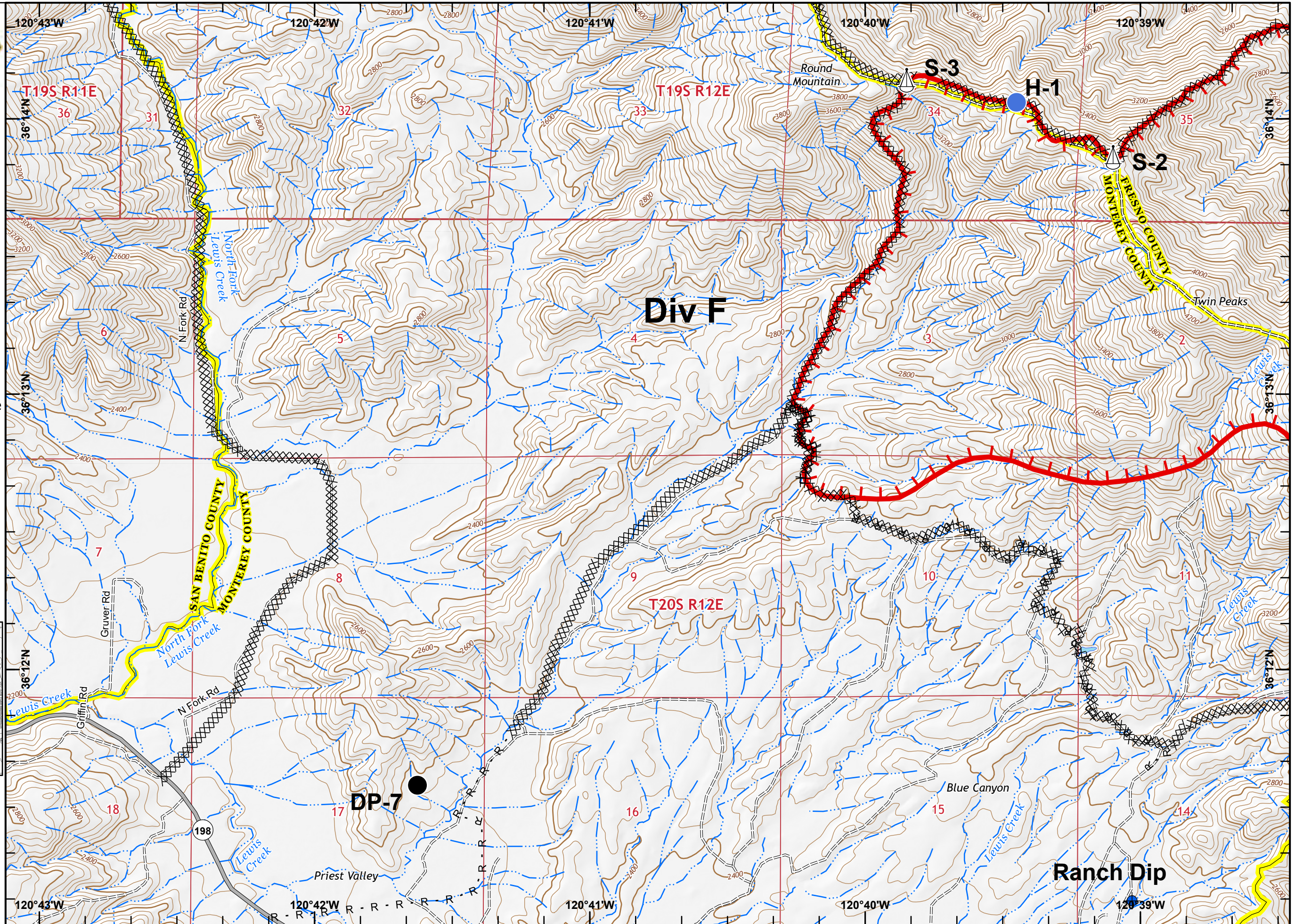
Pg. 1	Pg. 2	Pg. 3
Pg. 4	Pg. 5	Pg. 6
Pg. 7	Pg. 8	Pg. 9
Pg. 10	Pg. 11	Pg. 12
Pg. 13	198	



Miles
0 0.13 0.25 0.5

1:24,000

IMT 2
7/20/2020
00:06 hrs





IAP MAP

Mineral Incident

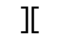


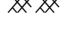
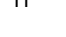



CA-FKU-010219

July 20, 2020

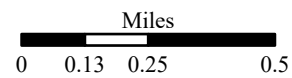
0700 - 0700

NAD 83

Pg. 5

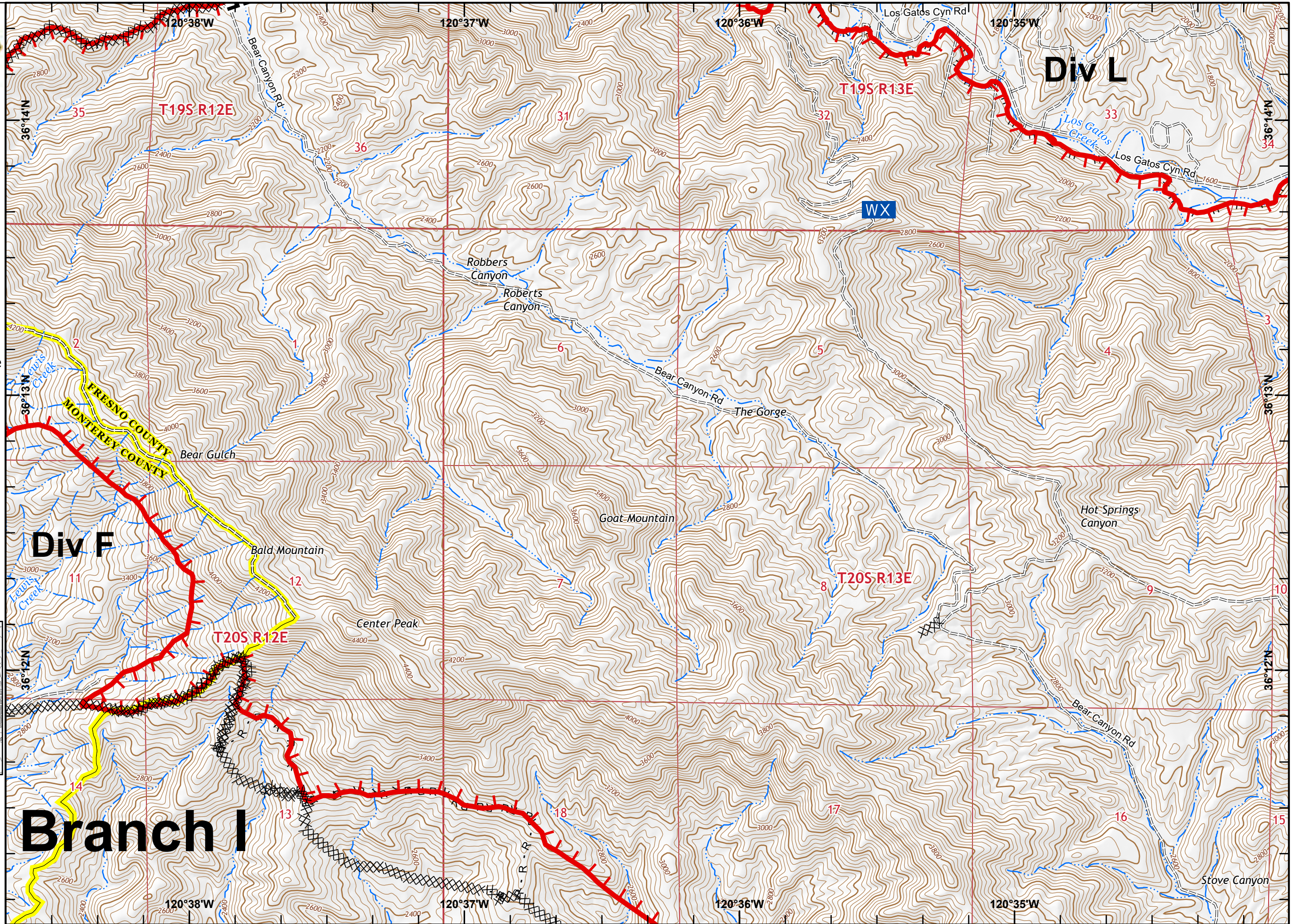
-  Branch Break
-  Mobile Weather Unit
-  Uncontrolled Fire Edge
-  Completed Dozer Line
-  Completed Hand Line
-  Road as Completed Line
-  Local or 4WD road
-  County Boundaries

Pg. 1	Pg. 2	Pg. 3	
Pg. 4	Pg. 5	Pg. 6	Pg. 7
	Pg. 8	Pg. 9	Pg. 10
Pg. 11	Pg. 12	Pg. 13	198



1:24,000

IMT 2
7/20/2020
00:06 hrs





IAP MAP

Mineral Incident

CA-FKU-010219

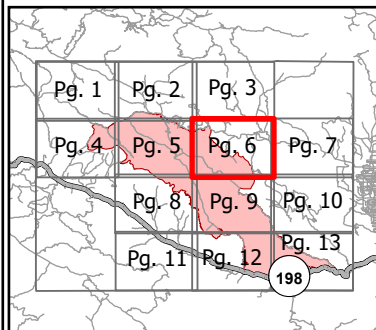
July 20, 2020

0700 - 0700

NAD 83

Pg. 6

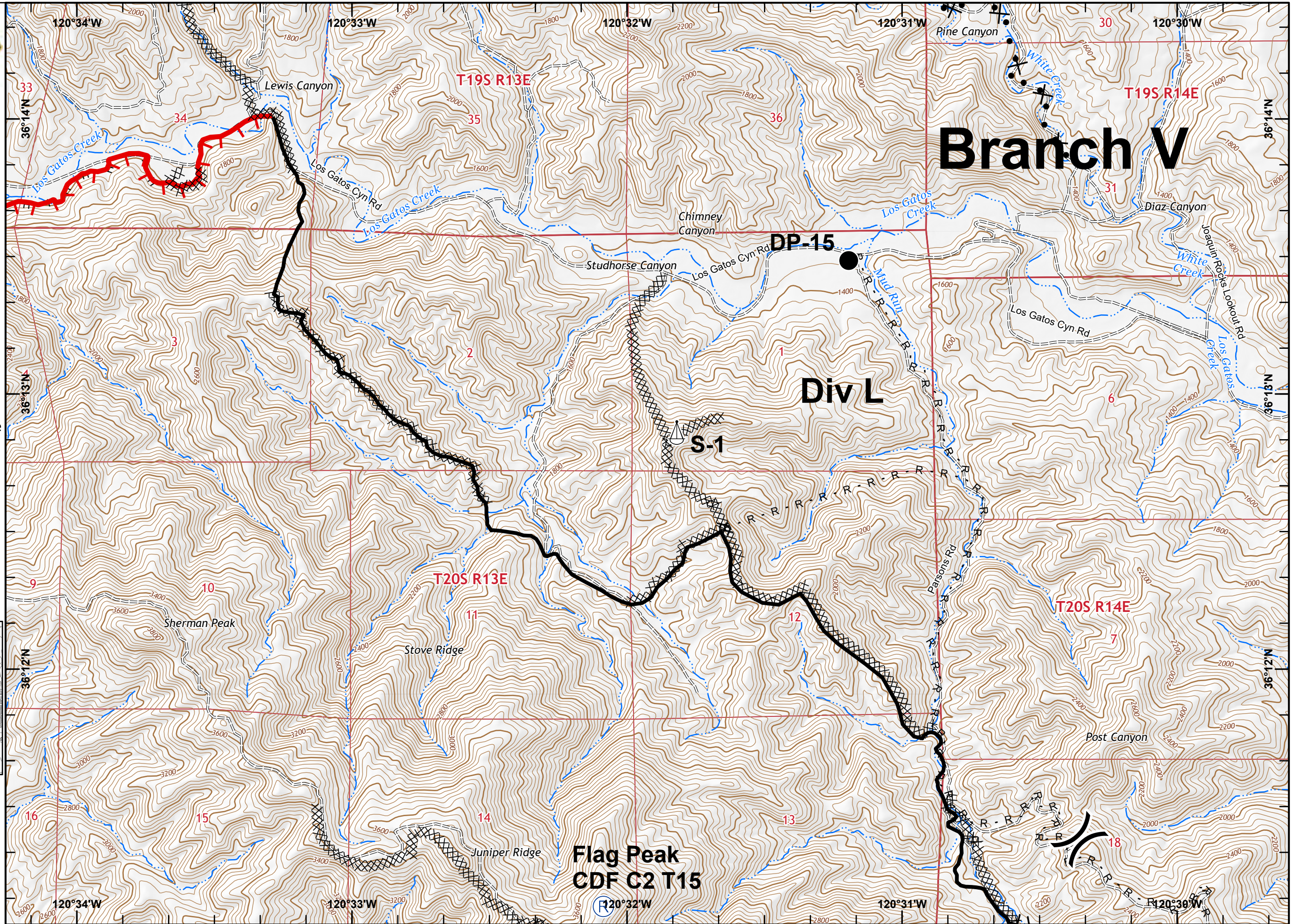
-) Division Break
- Drop Point
- Ⓡ Repeater
- ⚠ Sling Site
- ▬ Uncontrolled Fire Edge
- ▬ Contained Line
- ⊗⊗ Completed Dozer Line
- H · Completed Hand Line
- R Road as Completed Line
- X• Proposed Dozer Line
- == Local or 4WD road
- ▭ County Boundaries



Miles
0 0.13 0.25 0.5

1:24,000

IMT 2
7/20/2020
00:06 hrs



Branch V

Div L

Flag Peak
CDF C2 T15



IAP MAP

Mineral Incident

CA-FKU-010219

July 20, 2020

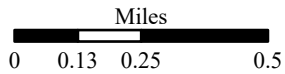
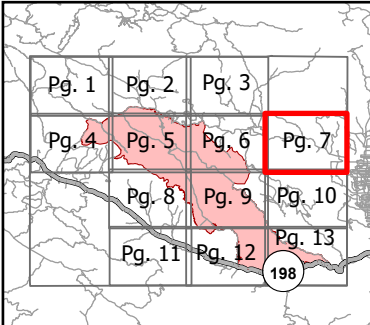
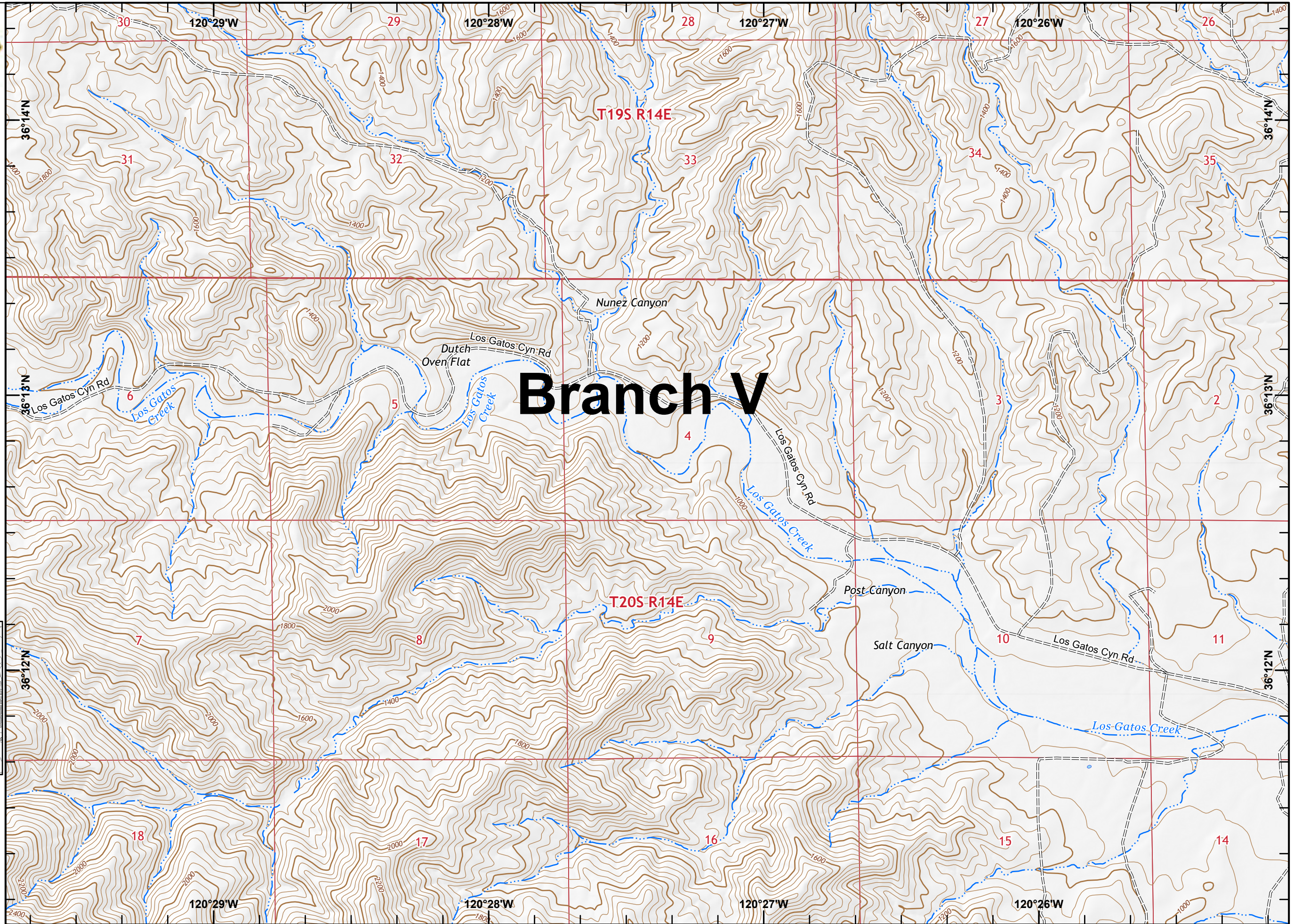
0700 - 0700

NAD 83

Pg. 7

== Local or 4WD road

County Boundaries



1:24,000

IMT 2
7/20/2020
00:06 hrs



IAP MAP

Mineral Incident

CA-FKU-010219

July 20, 2020

0700 - 0700

NAD 83

Pg. 8

-) Division Break
- Dip Site
- Uncontrolled Fire Edge
- ××× Completed Dozer Line
- H - Completed Hand Line
- R Road as Completed Line
- Local connector
- == Local or 4WD road
- County Boundaries

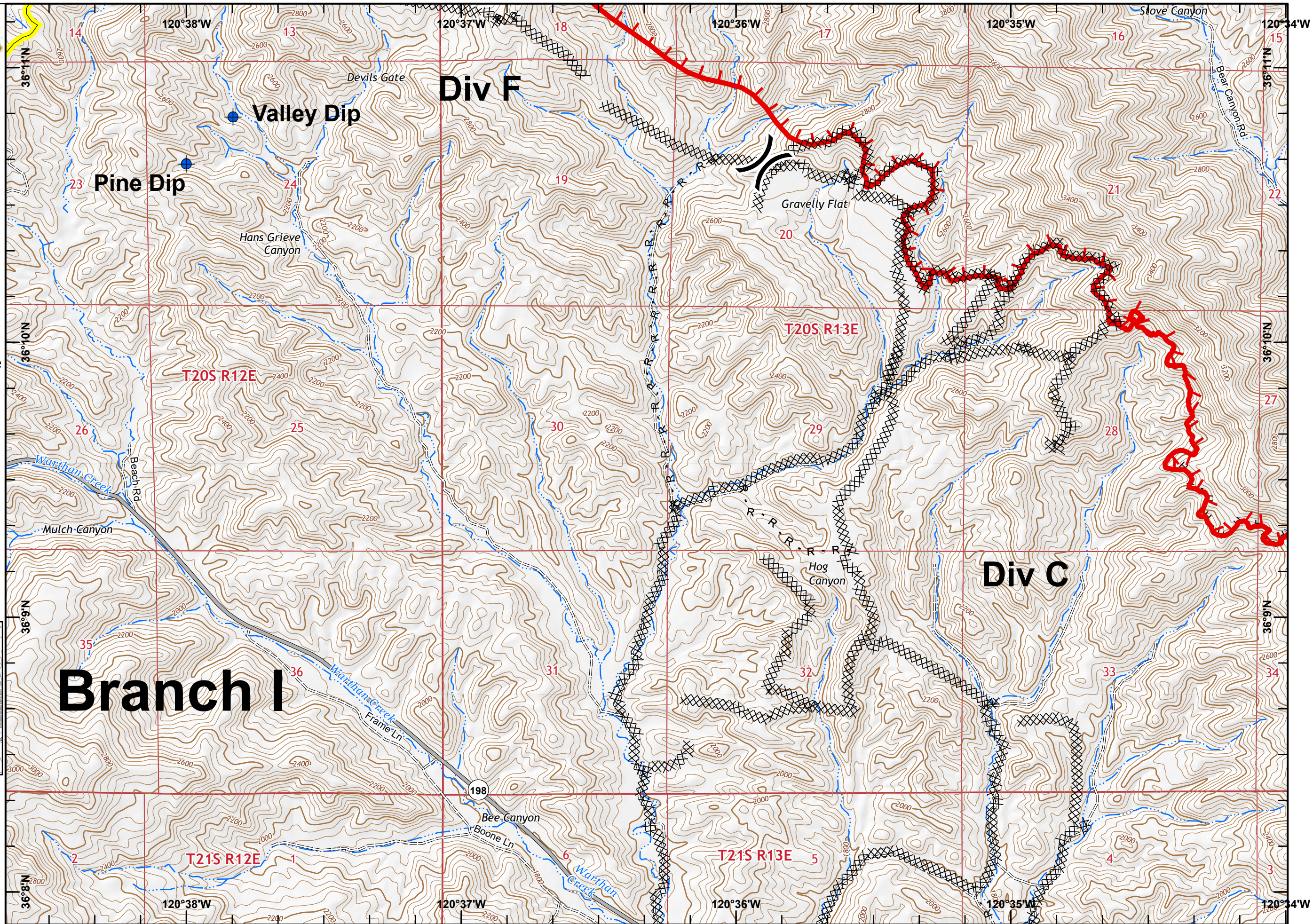
Pg. 1	Pg. 2	Pg. 3	
Pg. 4	Pg. 5	Pg. 6	Pg. 7
Pg. 8	Pg. 9	Pg. 10	
Pg. 11	Pg. 12	Pg. 13	198



Miles
0 0.13 0.25 0.5

1:24,000

IMT 2
7/20/2020
00:06 hrs





IAP MAP

Mineral Incident

CA-FKU-010219

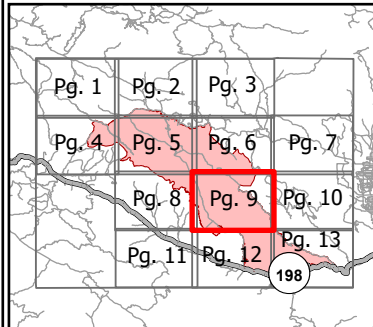
July 20, 2020

0700 - 0700

NAD 83

Pg. 9

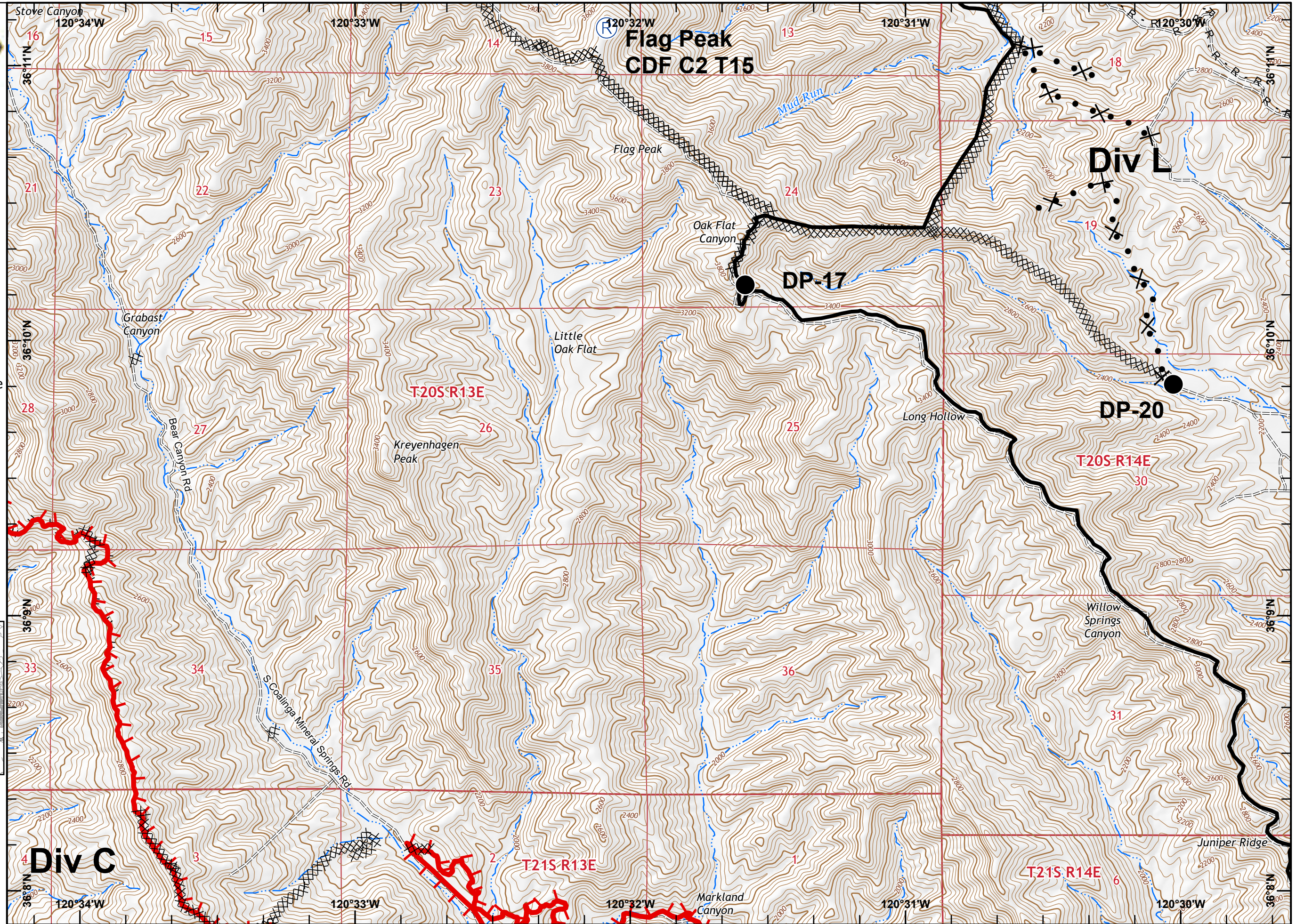
- Drop Point
- Ⓡ Repeater
- ▬ Uncontrolled Fire Edge
- ▬ Contained Line
- ⊗⊗ Completed Dozer Line
- H - Completed Hand Line
- R Road as Completed Line
- X• Proposed Dozer Line
- === Local or 4WD road
- ▬ County Boundaries



Miles
0 0.13 0.25 0.5

1:24,000

IMT 2
7/20/2020
00:06 hrs





IAP MAP

Mineral Incident

CA-FKU-010219

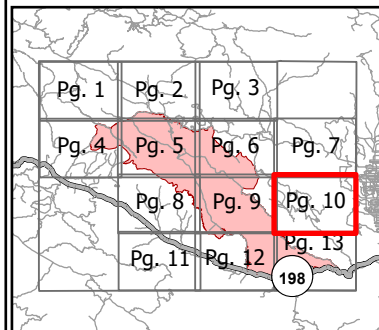
July 20, 2020

0700 - 0700

NAD 83

Pg. 10

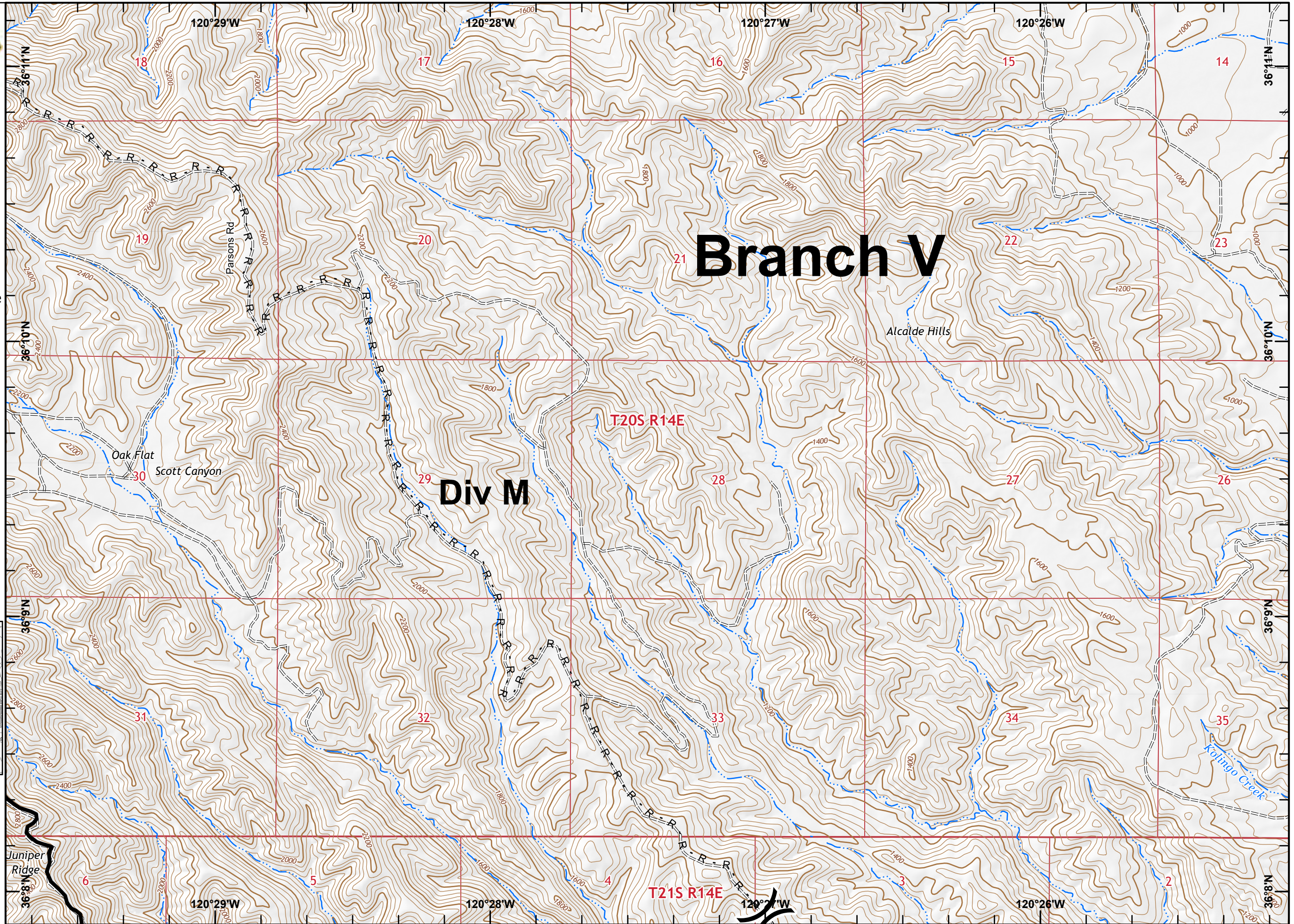
- () Division Break
- Contained Line
- R Road as Completed Line
- == Local or 4WD road
- County Boundaries



Miles
0 0.13 0.25 0.5

1:24,000

IMT 2
7/20/2020
00:05 hrs





IAP MAP

Mineral Incident

CA-FKU-010219

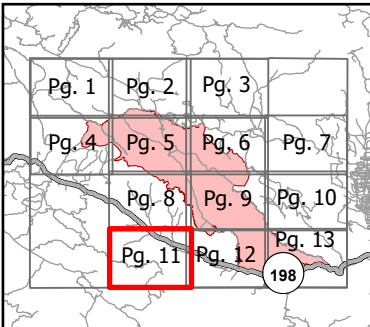
July 20, 2020

0700 - 0700

NAD 83

Pg. 11

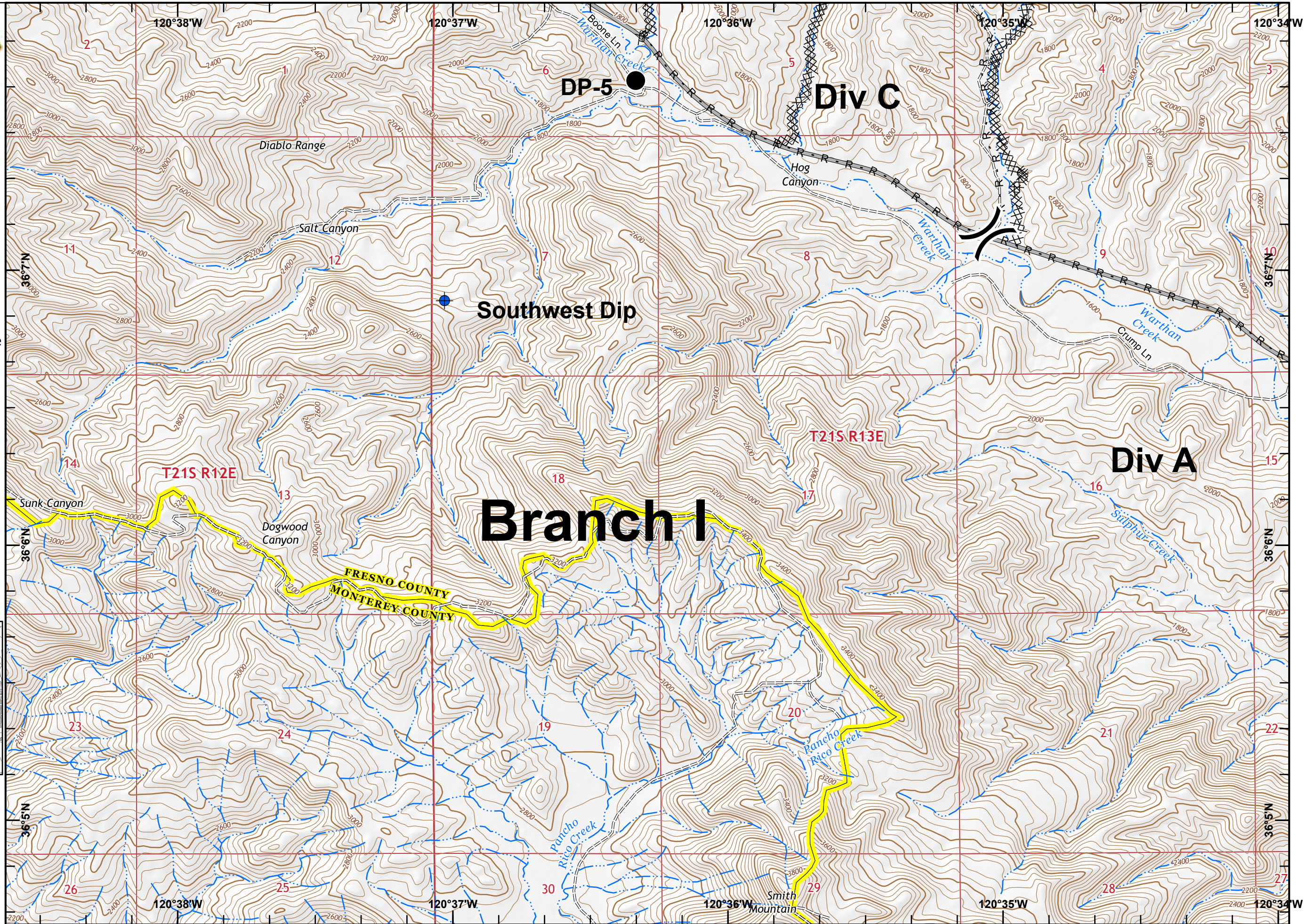
-) Division Break
- ◆ Dip Site
- Drop Point
- ××× Completed Dozer Line
- R Road as Completed Line
- Local connector
- == Local or 4WD road
- ▭ County Boundaries



Miles
0 0.13 0.25 0.5

1:24,000

IMT 2
7/20/2020
00:05 hrs





IAP MAP

Mineral Incident

CA-FKU-010219

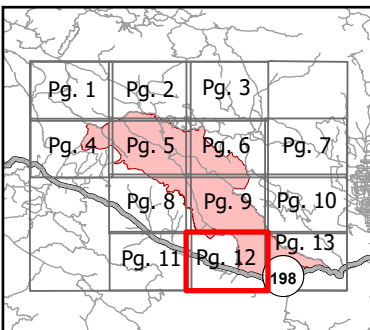
July 20, 2020

0700 - 0700

NAD 83

Pg. 12

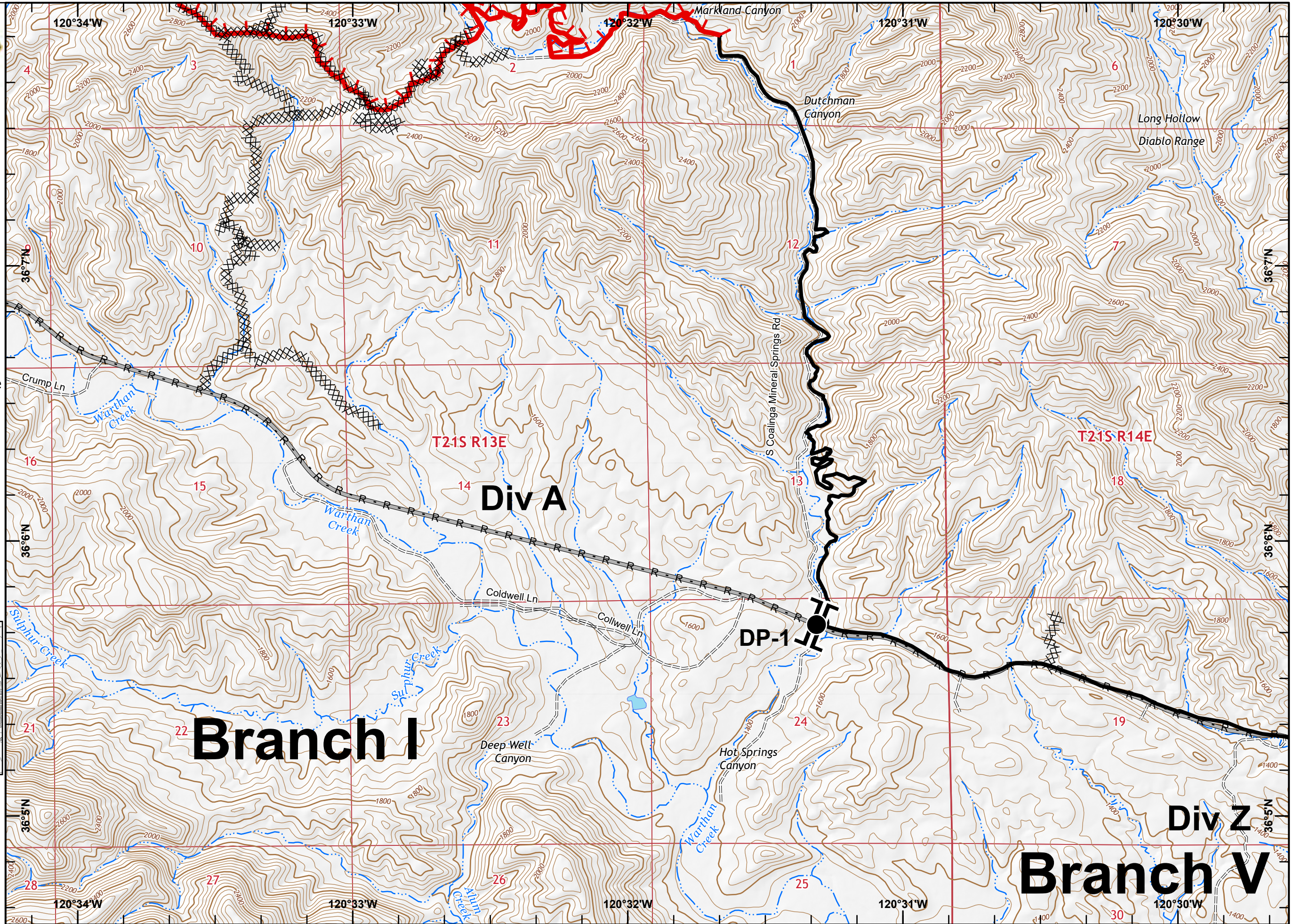
- Branch Break
- Drop Point
- Uncontrolled Fire Edge
- Contained Line
- Completed Dozer Line
- Completed Hand Line
- Road as Completed Line
- Local connector
- Local or 4WD road
- County Boundaries



Miles
0 0.13 0.25 0.5

1:24,000

IMT 2
7/20/2020
00:05 hrs





IAP MAP

Mineral Incident

CA-FKU-010219

July 20, 2020

0700 - 0700

NAD 83

Pg. 13

-) Division Break
- Drop Point
- Contained Line
- ××× Completed Dozer Line
- R Road as Completed Line
- Local connector
- === Local or 4WD road
- ▭ County Boundaries

Pg. 1	Pg. 2	Pg. 3	
Pg. 4	Pg. 5	Pg. 6	Pg. 7
Pg. 8	Pg. 9	Pg. 10	
Pg. 11	Pg. 12	Pg. 13	
		198	



Miles
0 0.13 0.25 0.5

1:24,000

IMT 2
7/20/2020
00:05 hrs

