



IAP MAP

Mineral Incident

CA-FKU-010219

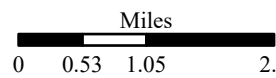
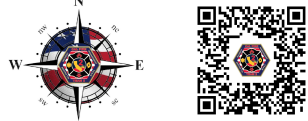
July 24, 2020 0700 to
July 29, 2020 0700
NAD 83

Index

- ┌┐ Branch Break
-) Division Break
- ◆ Dip Site
- Drop Point
- Helispot
- Ⓡ Repeater
- △ Sling Site
- ▬ Uncontrolled Fire Edge
- ▬ Contained Line
- ▬▬ Completed Dozer Line
- H - Completed Hand Line
- R Road as Completed Line
- ▬ Local connector
- ▬▬ Local or 4WD road
- ▬ County Boundaries

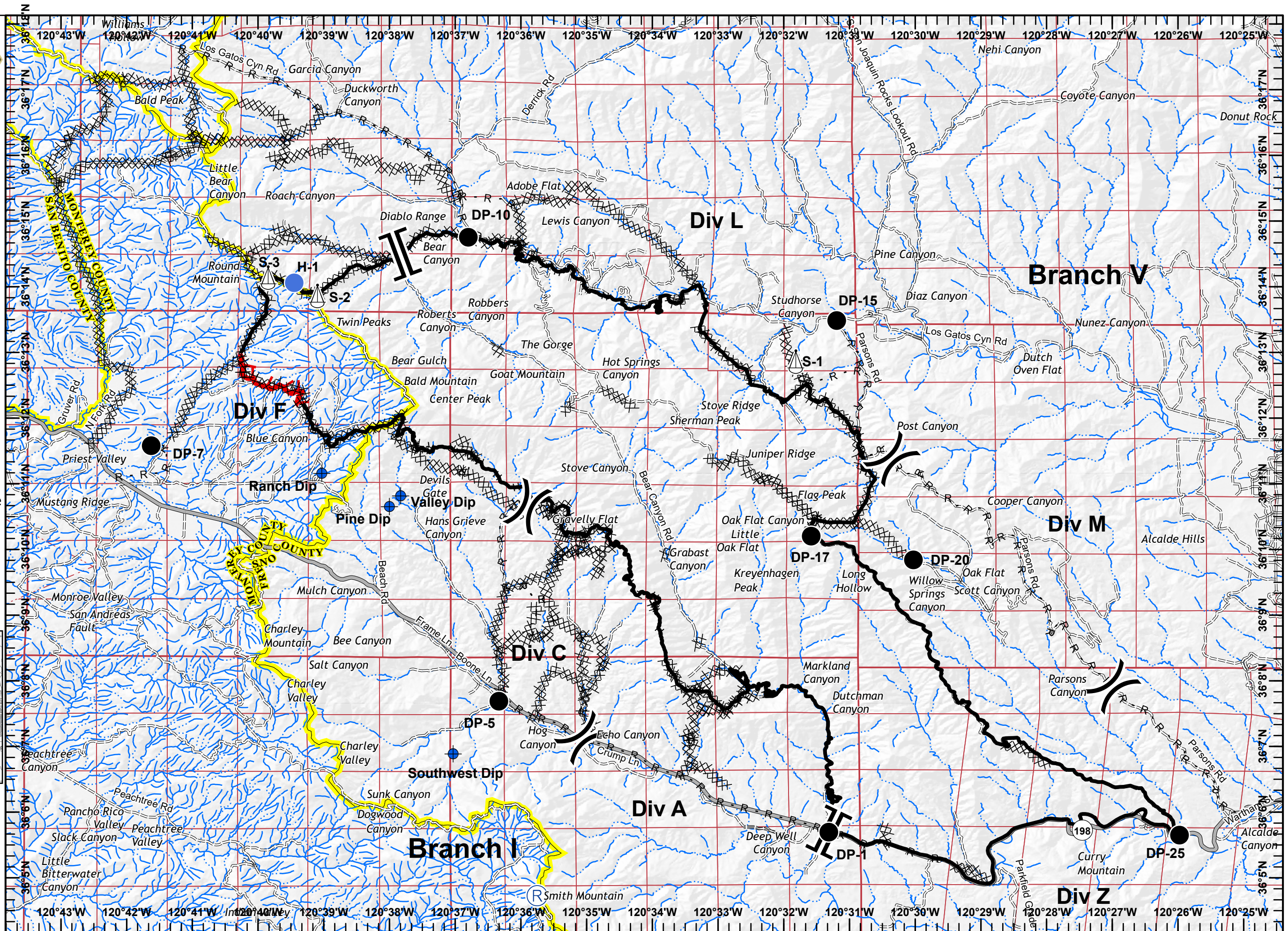
Pg. 1	Pg. 2	Pg. 3
Pg. 4	Pg. 5	Pg. 6
Pg. 8	Pg. 9	Pg. 10
Pg. 11	Pg. 12	Pg. 13

198



1:100,000

IMT 2
7/23/2020
16:59 hrs





IAP MAP

Mineral Incident






CA-FKU-010219

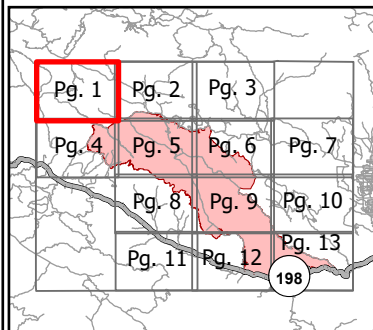
July 24, 2020 0700 to

July 29, 2020 0700

NAD 83

Pg. 1

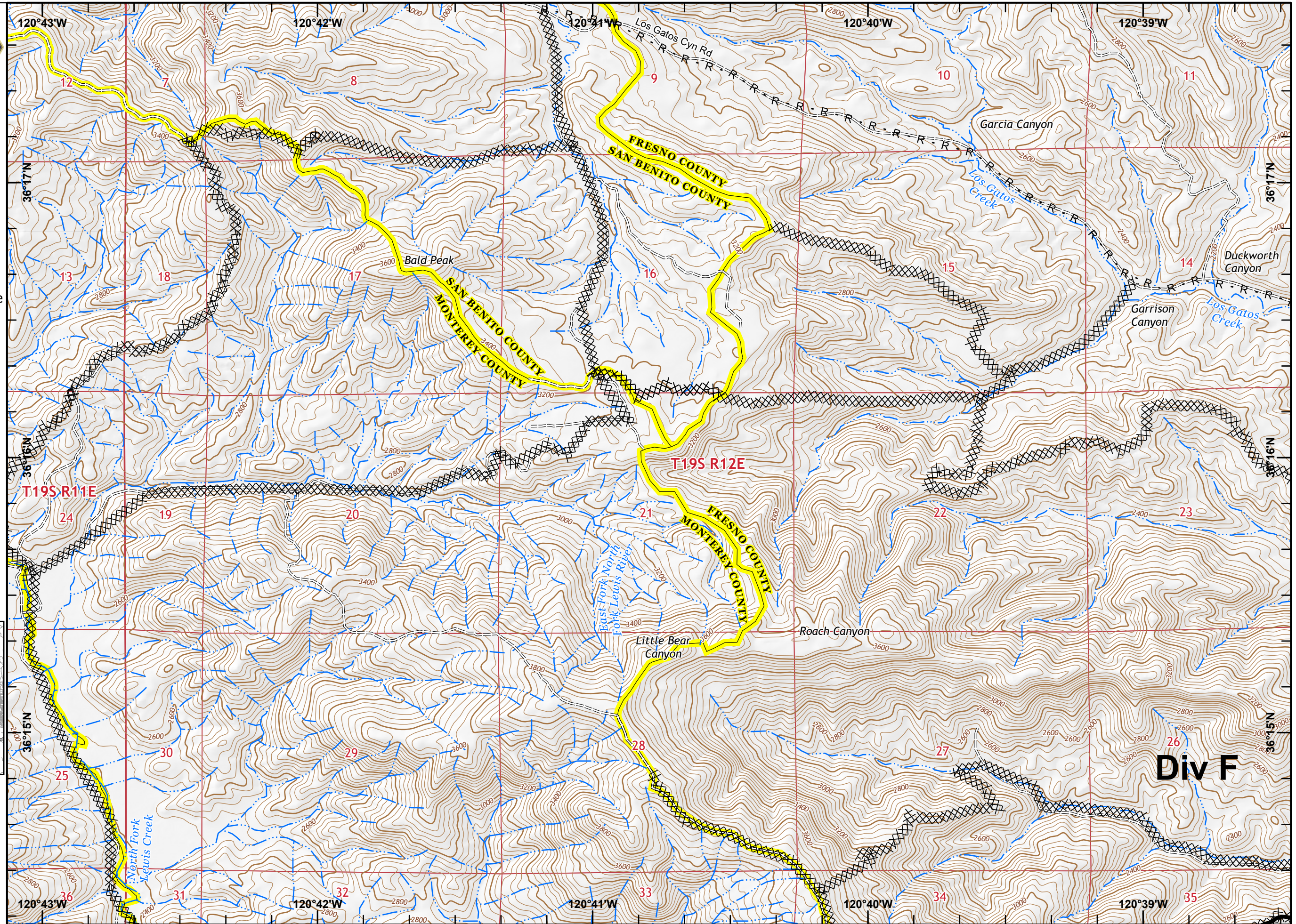
-  Contained Line
-  Completed Dozer Line
-  Road as Completed Line
-  Local or 4WD road
-  County Boundaries



Miles
0 0.13 0.25 0.5

1:24,000

IMT 2
7/23/2020
16:59 hrs





IAP MAP

Mineral Incident

CA-FKU-010219

July 24, 2020 0700 to

July 29, 2020 0700

NAD 83

Pg. 10

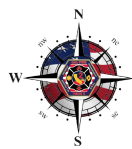
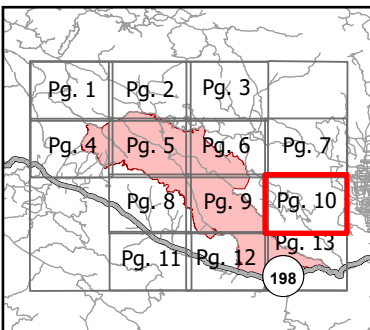
) Division Break

— Contained Line

R Road as Completed Line

== Local or 4WD road

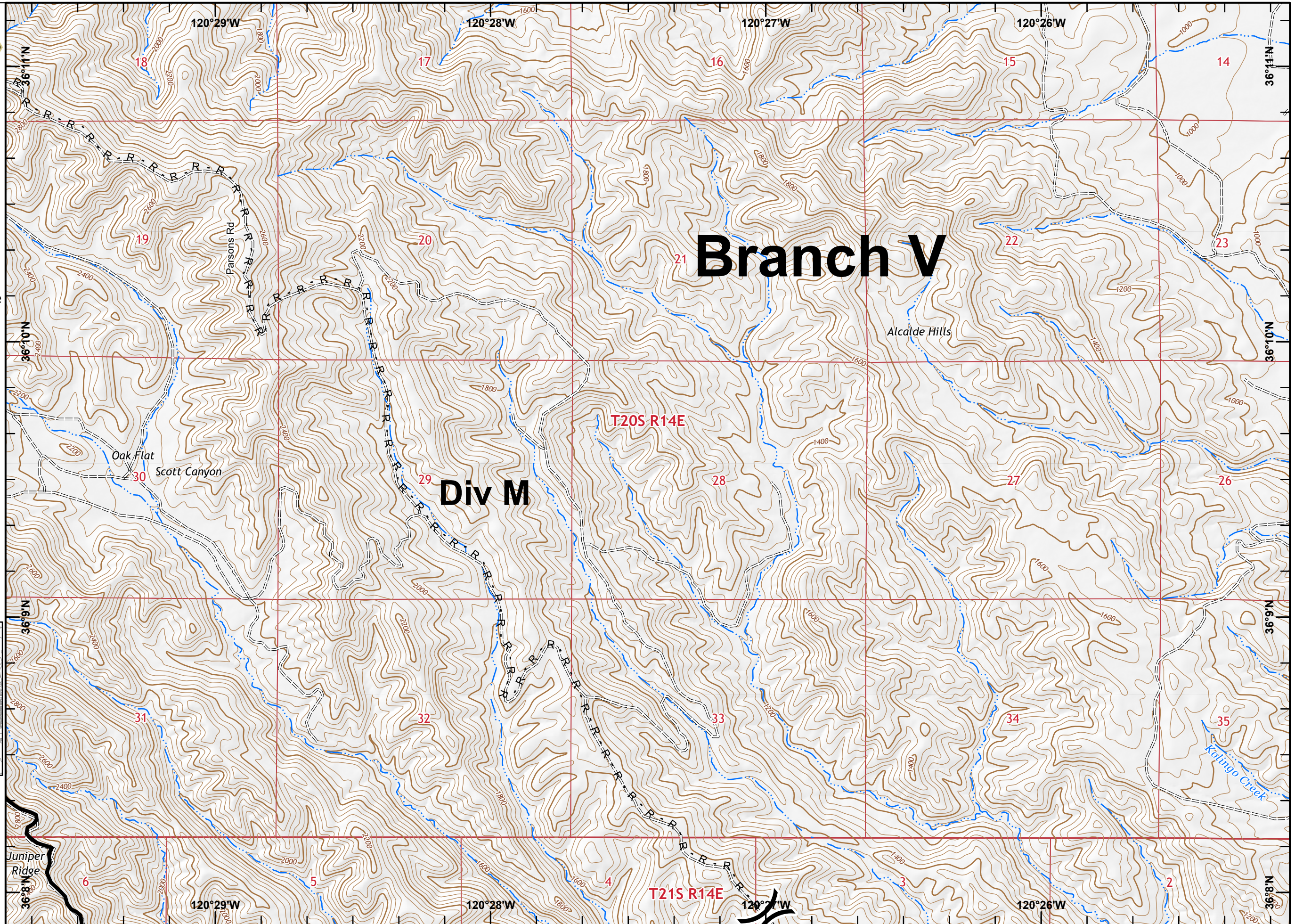
County Boundaries



Miles
0 0.13 0.25 0.5

1:24,000

IMT 2
7/23/2020
17:00 hrs





IAP MAP

Mineral Incident

CA-FKU-010219

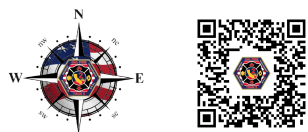
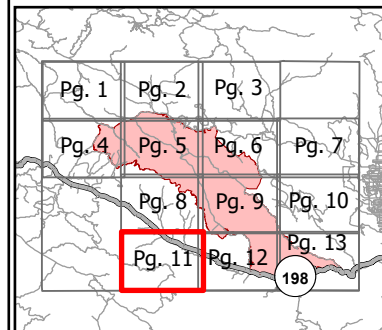
July 24, 2020 0700 to

July 29, 2020 0700

NAD 83

Pg. 11

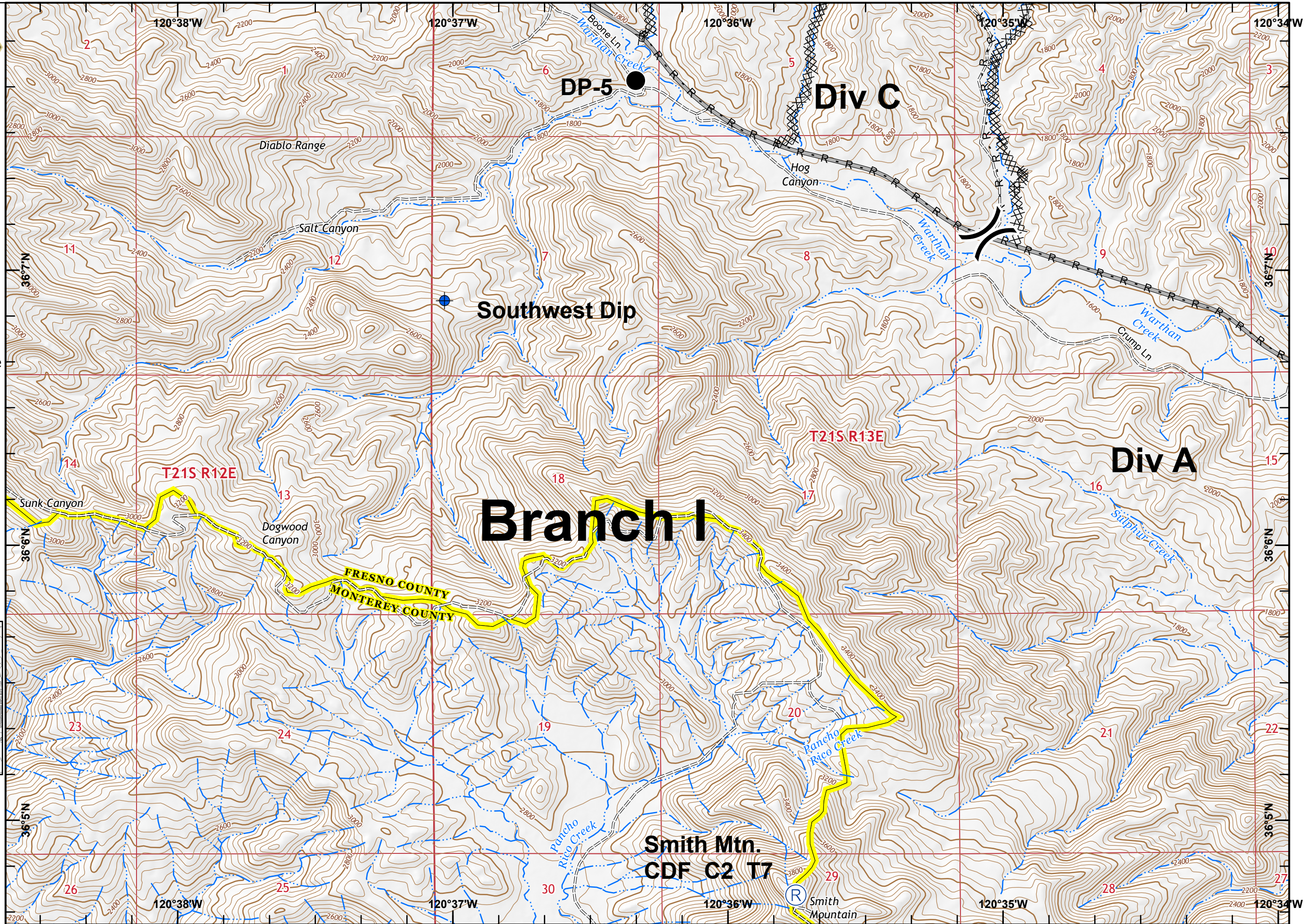
-) Division Break
- ◆ Dip Site
- Drop Point
- Ⓡ Repeater
- ⊗⊗ Completed Dozer Line
- R Road as Completed Line
- Local connector
- == Local or 4WD road
- ▬ County Boundaries



Miles
0 0.13 0.25 0.5

1:24,000

IMT 2
7/23/2020
17:00 hrs





IAP MAP

Mineral Incident

CA-FKU-010219

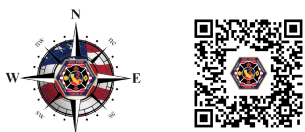
July 24, 2020 0700 to
July 29, 2020 0700

NAD 83

Pg. 12

- Branch Break
- Drop Point
- Contained Line
- Completed Dozer Line
- Completed Hand Line
- Road as Completed Line
- Local connector
- Local or 4WD road
- County Boundaries

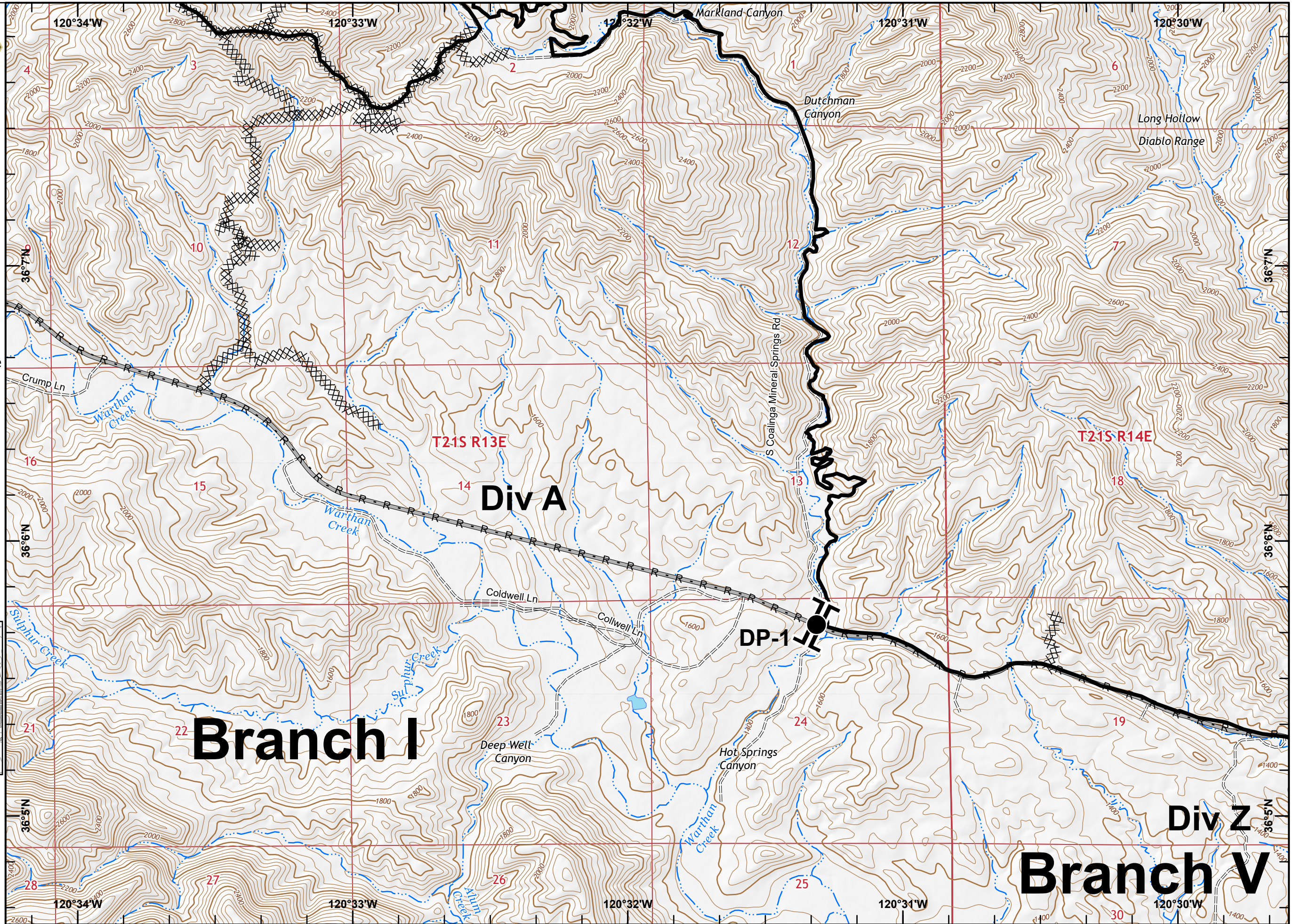
Pg. 1	Pg. 2	Pg. 3	
Pg. 4	Pg. 5	Pg. 6	Pg. 7
Pg. 8	Pg. 9	Pg. 10	
Pg. 11	Pg. 12	Pg. 13	198



Miles
0 0.13 0.25 0.5

1:24,000

IMT 2
7/23/2020
17:00 hrs





IAP MAP

Mineral Incident

CA-FKU-010219

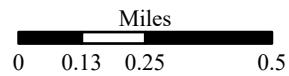
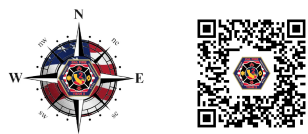
July 24, 2020 0700 to
July 29, 2020 0700

NAD 83

Pg. 13

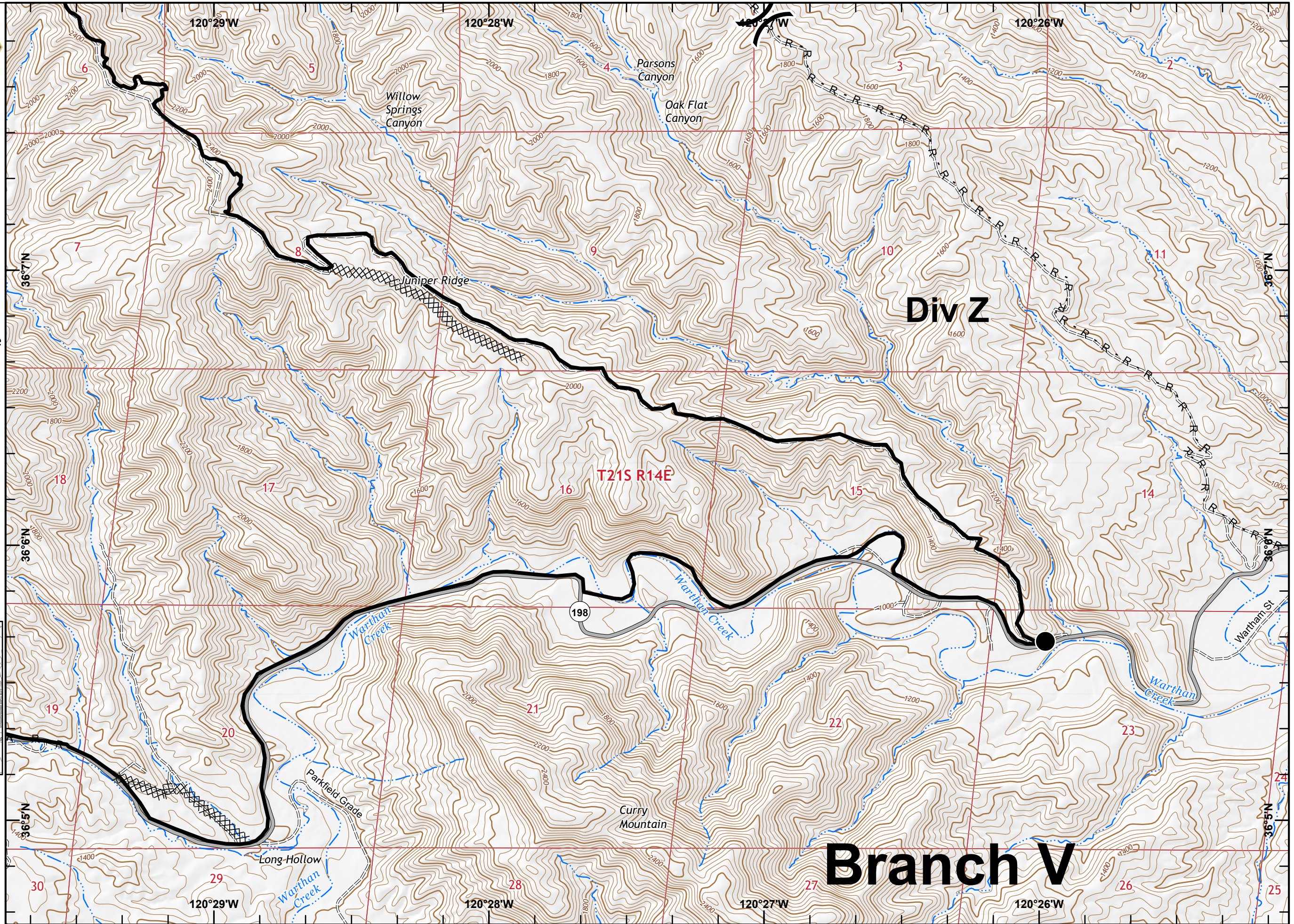
-) Division Break
- Drop Point
- Contained Line
- ××× Completed Dozer Line
- R Road as Completed Line
- Local connector
- === Local or 4WD road
- ▭ County Boundaries

Pg. 1	Pg. 2	Pg. 3	
Pg. 4	Pg. 5	Pg. 6	Pg. 7
Pg. 8	Pg. 9	Pg. 10	
Pg. 11	Pg. 12	Pg. 13	



1:24,000

IMT 2
7/23/2020
17:00 hrs





IAP MAP

Mineral Incident

CA-FKU-010219

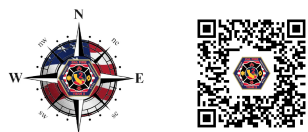
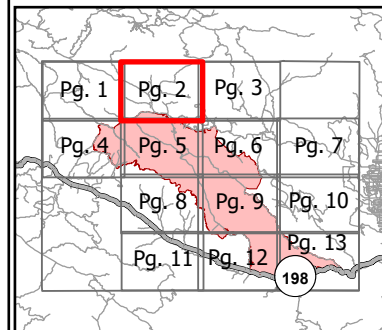
July 24, 2020 0700 to

July 29, 2020 0700

NAD 83

Pg. 2

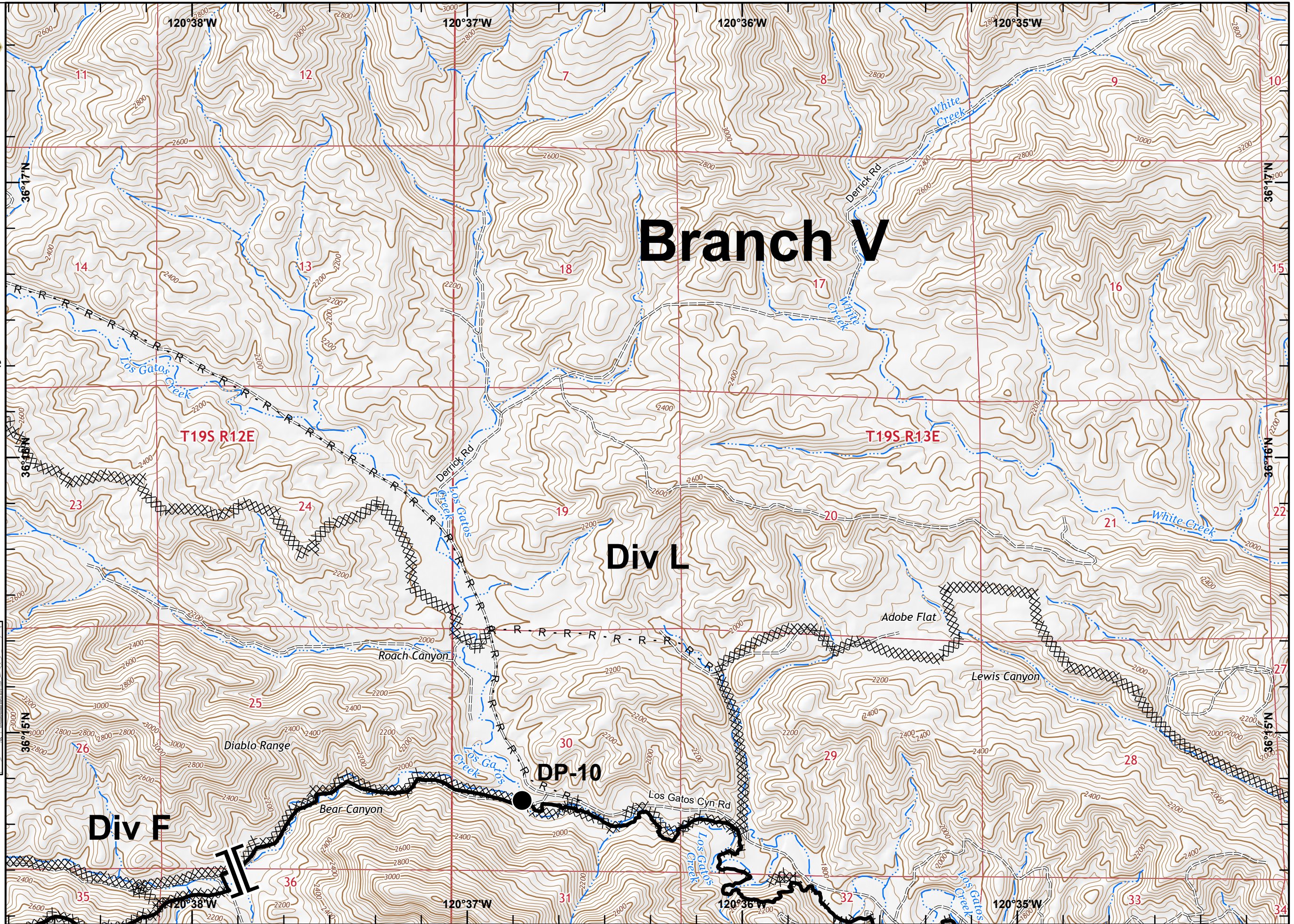
- Branch Break
- Drop Point
- Contained Line
- Completed Dozer Line
- Completed Hand Line
- Road as Completed Line
- Local or 4WD road
- County Boundaries



Miles
0 0.13 0.25 0.5

1:24,000

IMT 2
7/23/2020
17:00 hrs





IAP MAP

Mineral Incident

CA-FKU-010219

July 24, 2020 0700 to

July 29, 2020 0700

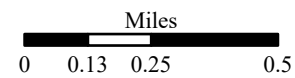
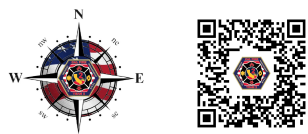
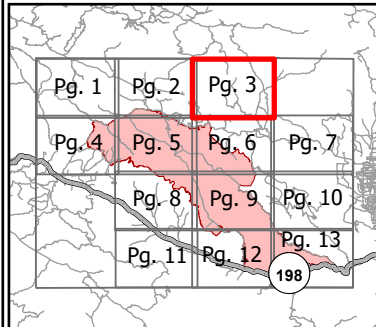
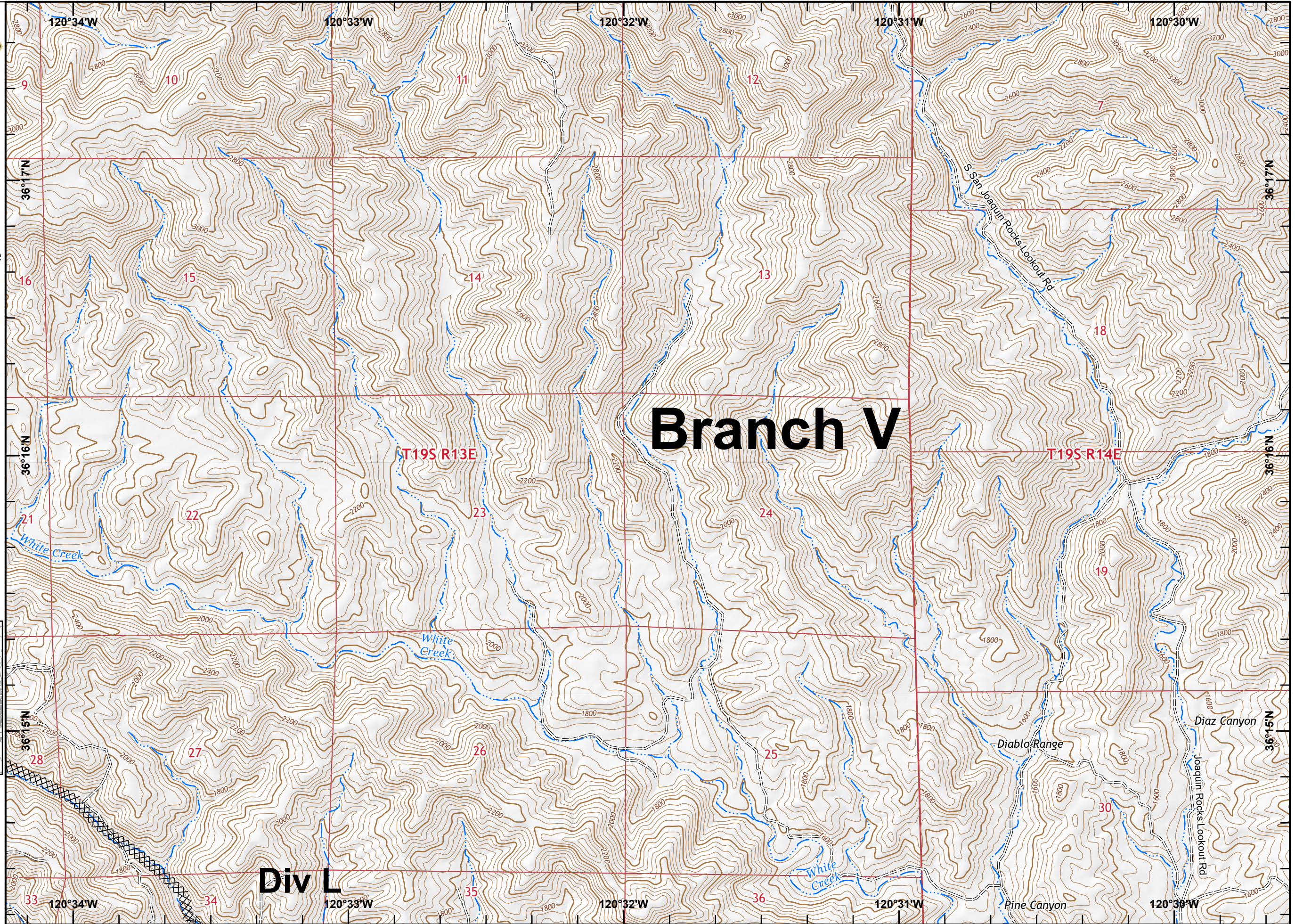
NAD 83

Pg. 3

⊗⊗ Completed Dozer Line

=== Local or 4WD road

▬ County Boundaries



1:24,000

IMT 2
7/23/2020
17:00 hrs



IAP MAP

Mineral Incident

CA-FKU-010219

July 24, 2020 0700 to

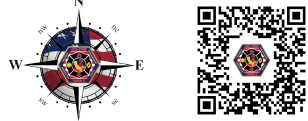
July 29, 2020 0700

NAD 83

Pg. 4

- Dip Site
- Drop Point
- Helispot
- Sling Site
- Uncontrolled Fire Edge
- Contained Line
- Completed Dozer Line
- Completed Hand Line
- Road as Completed Line
- Local connector
- Local or 4WD road
- County Boundaries

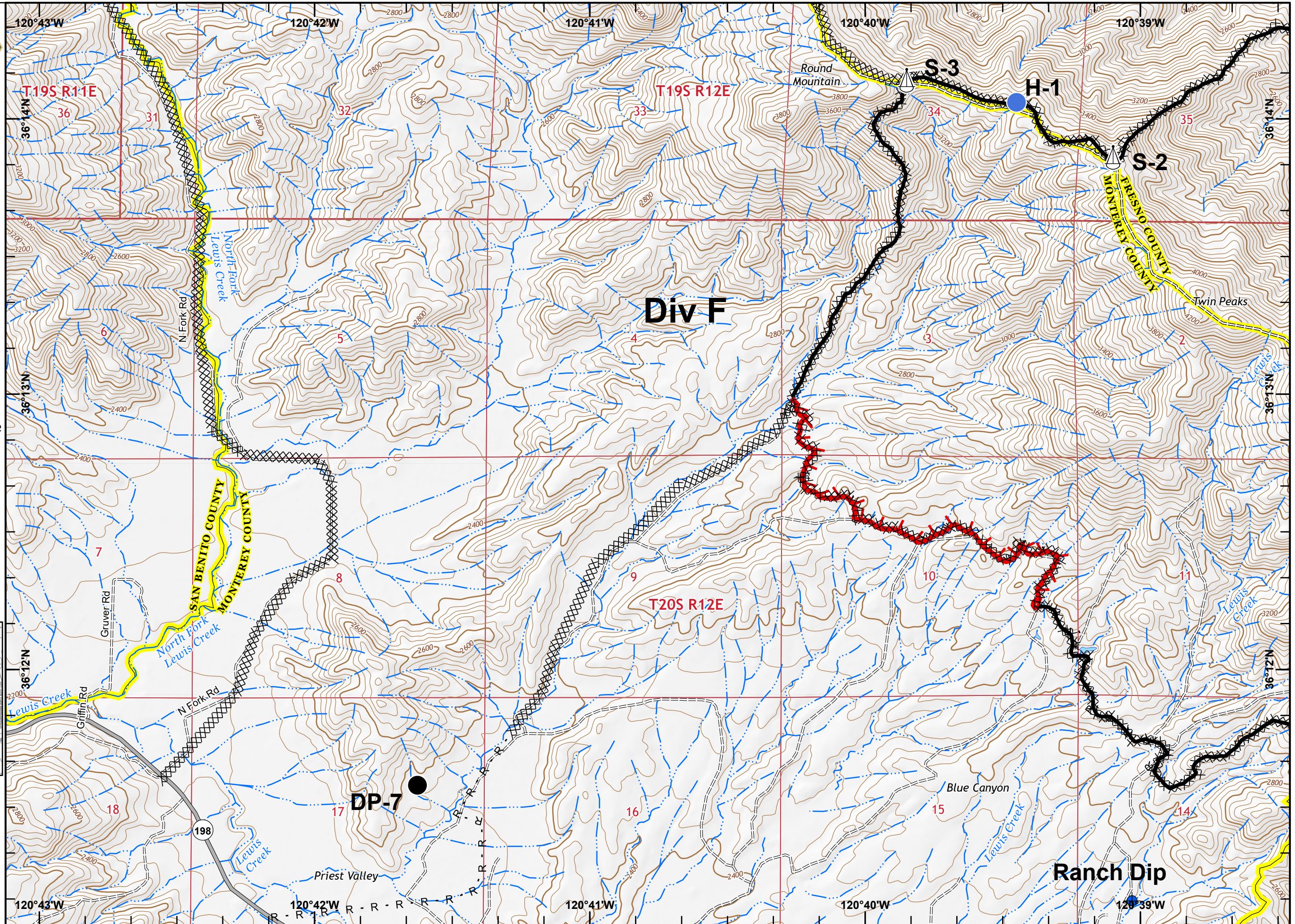
Pg. 1	Pg. 2	Pg. 3
Pg. 4	Pg. 5	Pg. 6
Pg. 7	Pg. 8	Pg. 9
Pg. 10	Pg. 11	Pg. 12
Pg. 13	198	



Miles
0 0.13 0.25 0.5

1:24,000

IMT 2
7/23/2020
17:00 hrs





IAP MAP

Mineral Incident

CA-FKU-010219

July 24, 2020 0700 to
July 29, 2020 0700

NAD 83

Pg. 5

- Branch Break
- Contained Line
- Completed Dozer Line
- Completed Hand Line
- Road as Completed Line
- Local or 4WD road
- County Boundaries

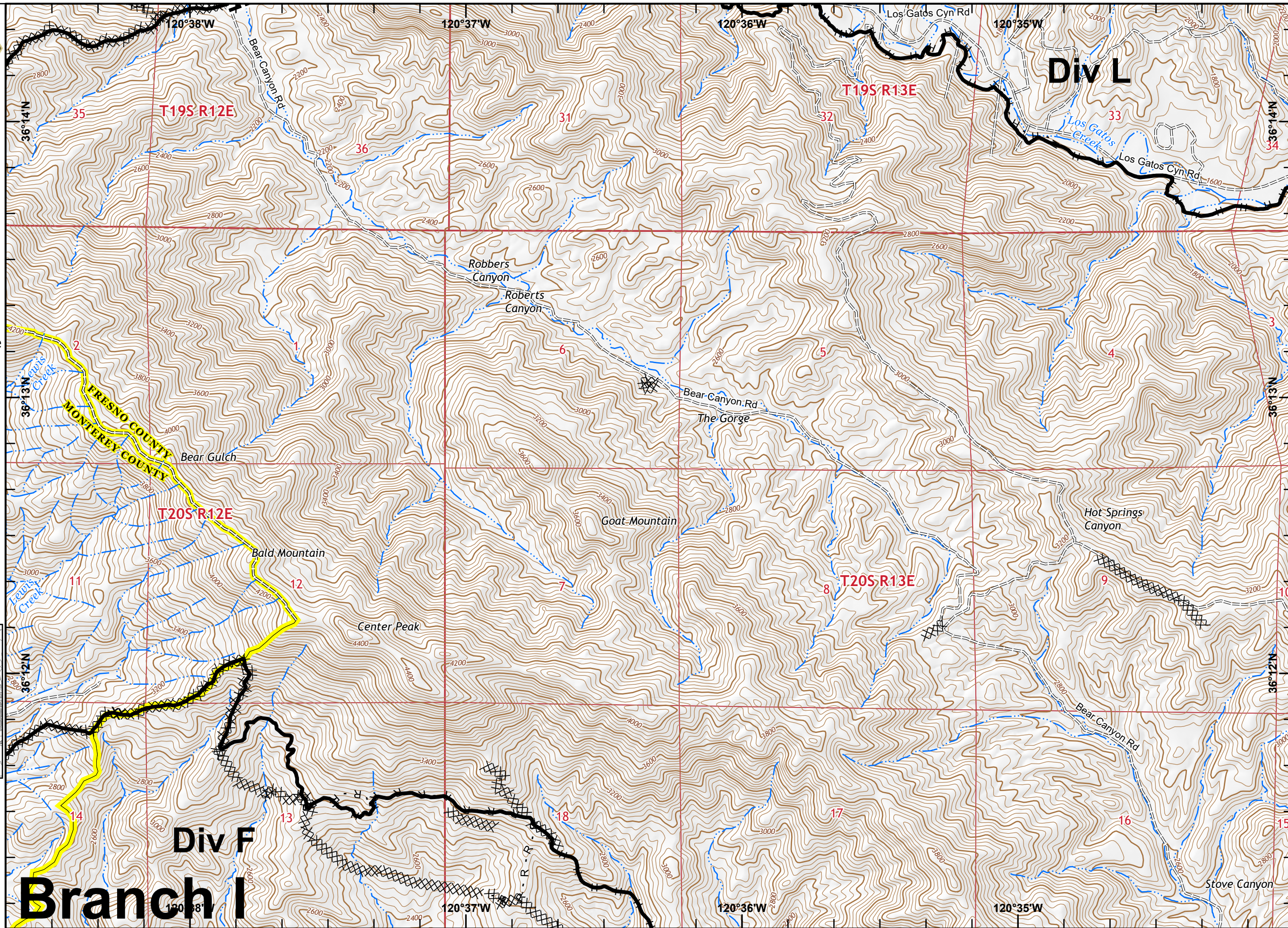
Pg. 1	Pg. 2	Pg. 3	
Pg. 4	Pg. 5	Pg. 6	Pg. 7
	Pg. 8	Pg. 9	Pg. 10
Pg. 11	Pg. 12	Pg. 13	198



Miles
0 0.13 0.25 0.5

1:24,000

IMT 2
7/23/2020
17:01 hrs





IAP MAP

Mineral Incident

CA-FKU-010219

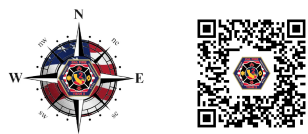
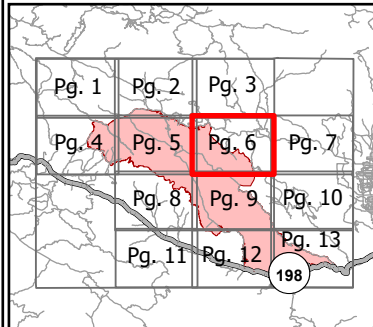
July 24, 2020 0700 to

July 29, 2020 0700

NAD 83

Pg. 6

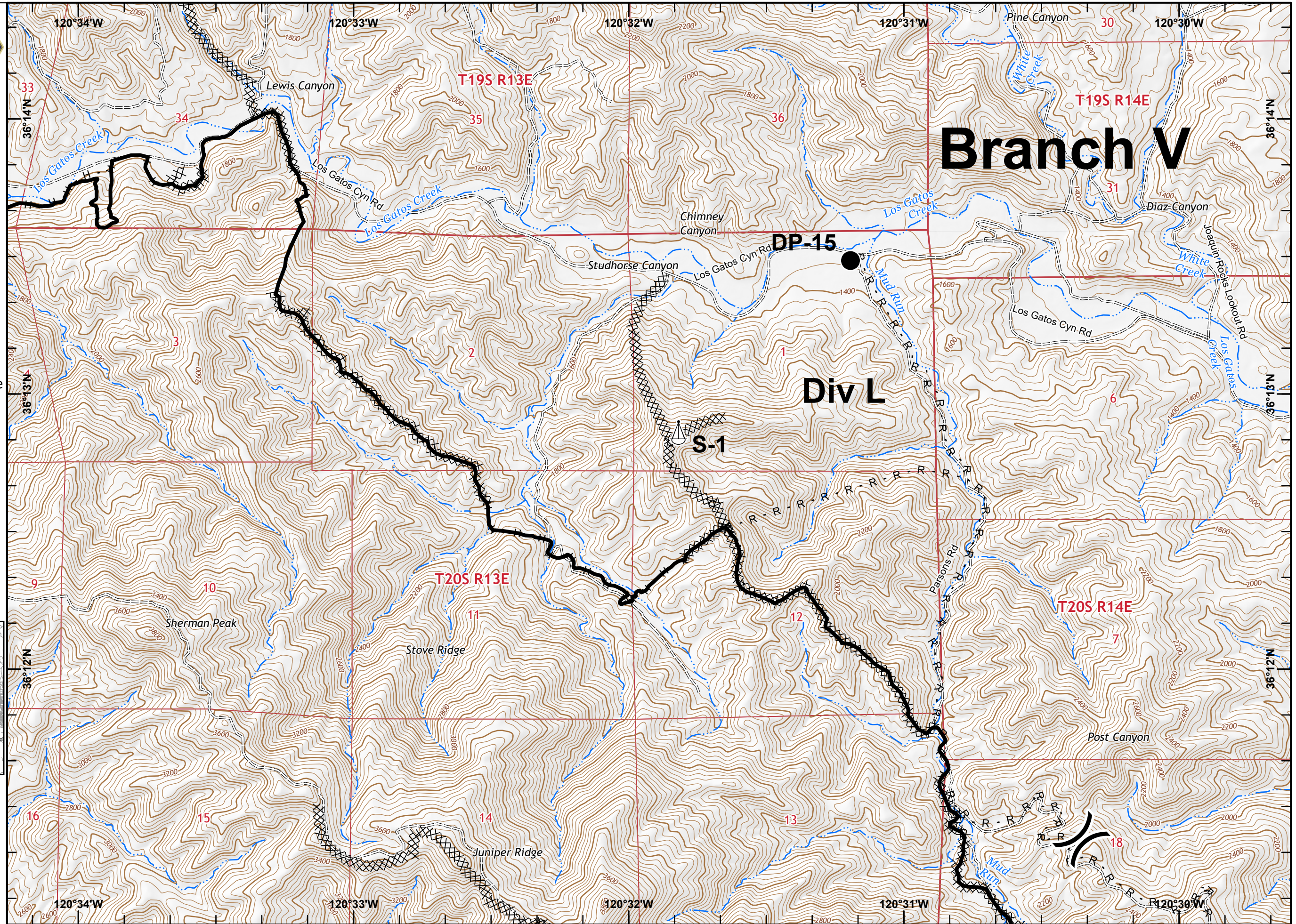
-) Division Break
- Drop Point
- ▲ Sling Site
- Contained Line
- ⊗ Completed Dozer Line
- H - Completed Hand Line
- R Road as Completed Line
- == Local or 4WD road
- ▭ County Boundaries



Miles
0 0.13 0.25 0.5

1:24,000

IMT 2
7/23/2020
17:01 hrs





IAP MAP

Mineral Incident

CA-FKU-010219

July 24, 2020 0700 to

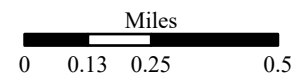
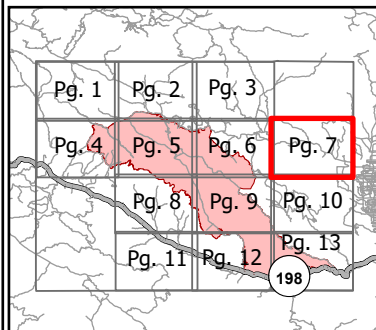
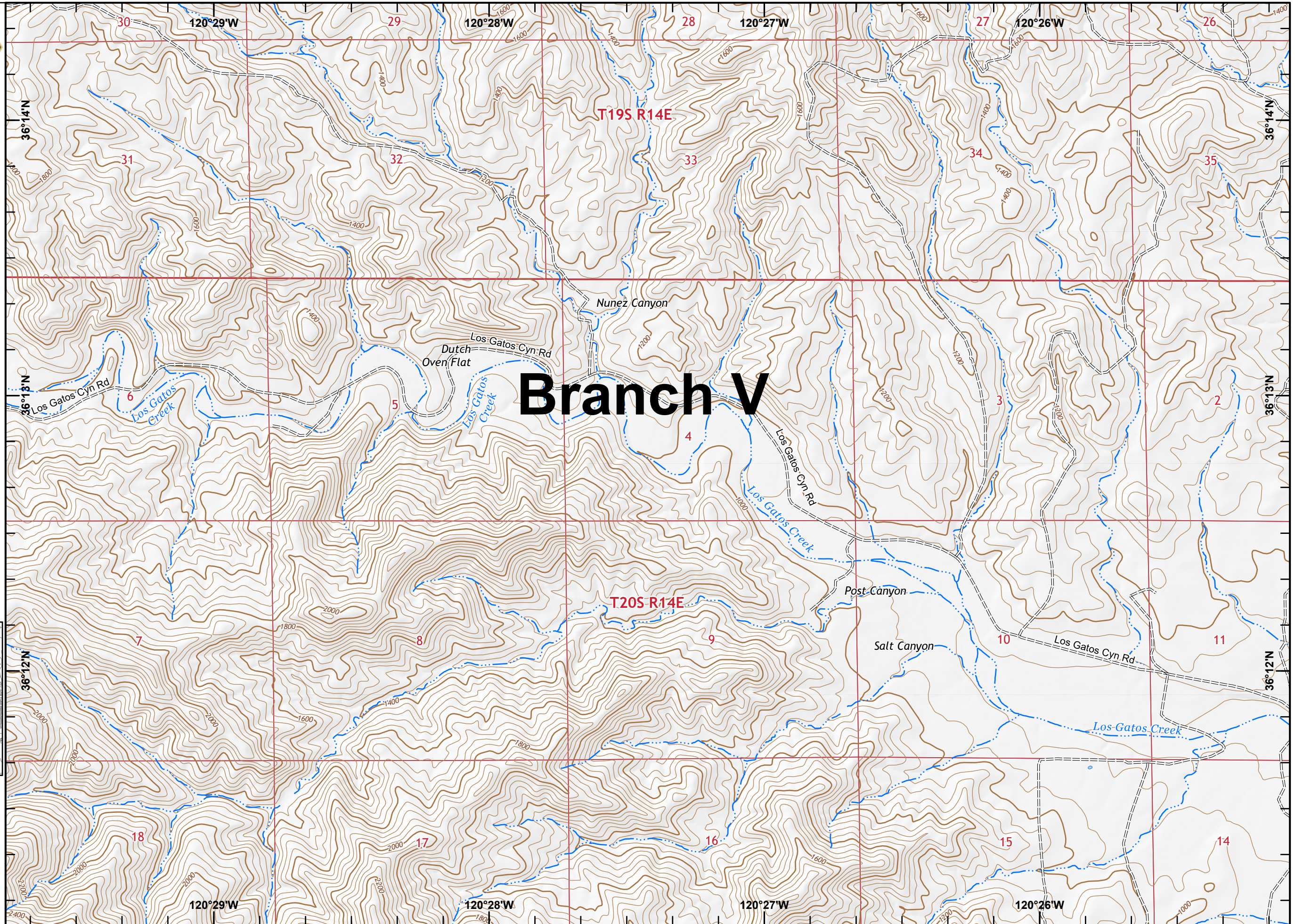
July 29, 2020 0700

NAD 83

Pg. 7

Local or 4WD road

County Boundaries



1:24,000

IMT 2
7/23/2020
17:01 hrs



IAP MAP

Mineral Incident

CA-FKU-010219

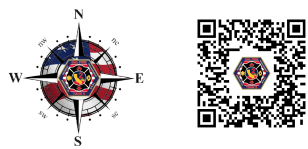
July 24, 2020 0700 to
July 29, 2020 0700

NAD 83

Pg. 8

-) Division Break
- Dip Site
- Contained Line
- ××× Completed Dozer Line
- H - Completed Hand Line
- R Road as Completed Line
- Local connector
- == Local or 4WD road
- County Boundaries

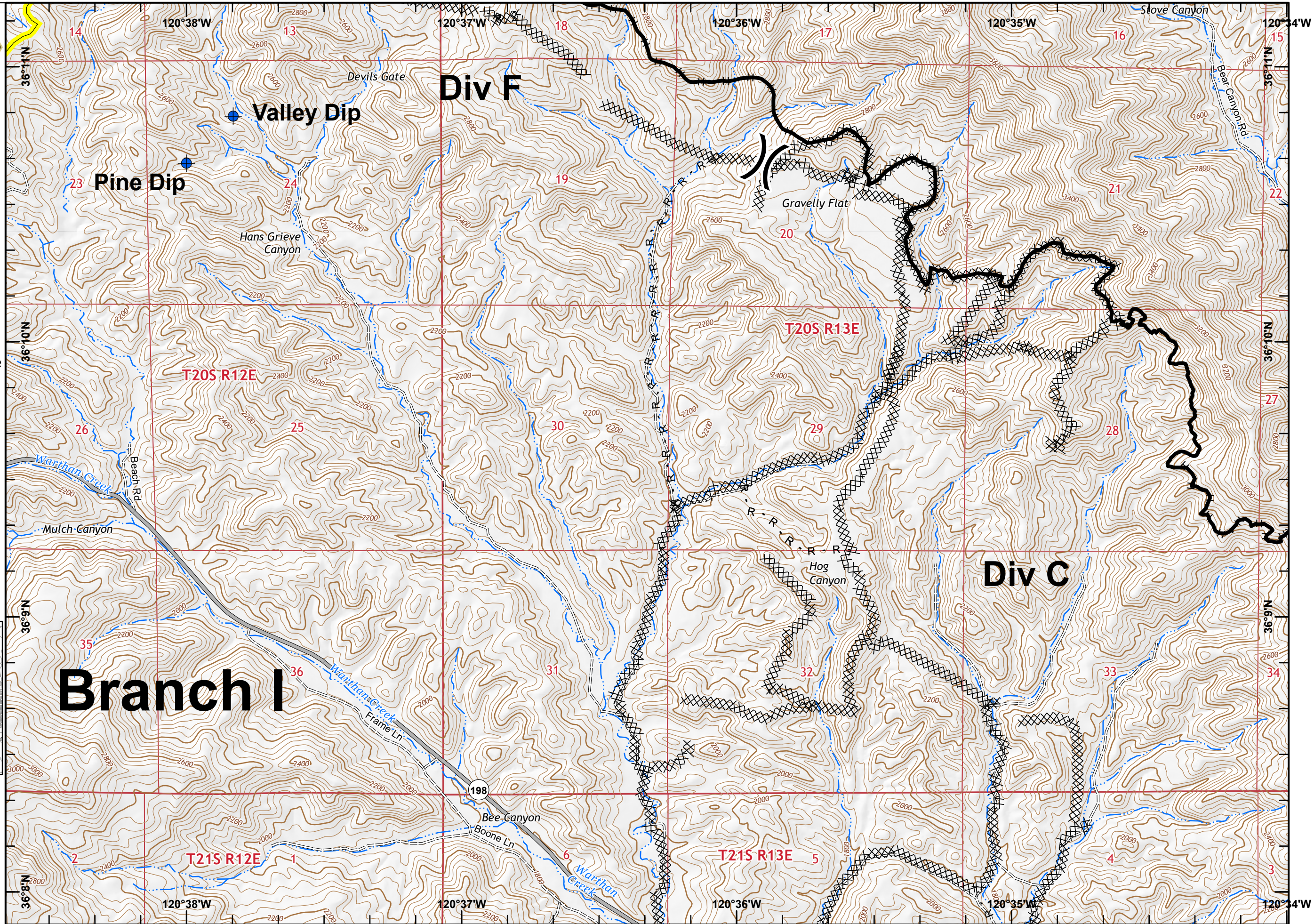
Pg. 1	Pg. 2	Pg. 3	
Pg. 4	Pg. 5	Pg. 6	Pg. 7
Pg. 8	Pg. 9	Pg. 10	
Pg. 11	Pg. 12	Pg. 13	198



Miles
0 0.13 0.25 0.5

1:24,000

IMT 2
7/23/2020
17:01 hrs





IAP MAP

Mineral Incident

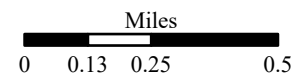
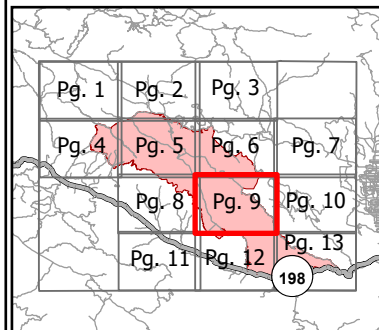
CA-FKU-010219

July 24, 2020 0700 to
July 29, 2020 0700

NAD 83

Pg. 9

- Drop Point
- Contained Line
- ××× Completed Dozer Line
- H - Completed Hand Line
- R Road as Completed Line
- == Local or 4WD road
- ▬ County Boundaries



1:24,000

IMT 2
7/23/2020
17:01 hrs

