

INCIDENT ACTION PLAN

MINERAL INCIDENT

CA-FKU-010219





OPERATIONAL PERIOD



7/18/2020 0700
to
7/19/2020 0700



INCIDENT OBJECTIVES (ICS 202)

1. Incident Name: <p style="text-align: center;">Mineral</p>	2. Operational Period:	Date From:	7/18/2020	Date To:	7/19/2020
		Time From:	0700	Time To:	0700
3. Objective(s): <u>Management Objectives</u> -Provide for emergency personnel and public safety at all times. -Protect property, improvements, and infrastructure. -Ensure repopulation takes place in a quick, efficient, and effective manner. -Ensure coordinated, timely and accurate release of public information. -Foster and maintain relationships with all cooperators and stakeholders. -Protect economic, natural, cultural and heritage resources. -Maintain fiscal accountability and keep costs commensurate with values at risk. <u>Control Objectives</u> -Keep the fire North of HWY 198. -Keep the fire South of Los Gatos Creek Road. -Keep the fire East of San Benito / Monterey County Line. -Keep the fire West of Parsons Ridge.					
General Situational Awareness: Steep and rugged terrain, critically dry and receptive fuel beds, active area for fire history and drought stressed trees.					
5. Site Safety Plan Required? Approved Site Safety Plan(s) Located at:					
6. Incident Action Plan					
<input checked="" type="checkbox"/> ICS 203	<input checked="" type="checkbox"/> ICS 215A	<input type="checkbox"/> Phone List	<input type="checkbox"/> Fire Suppression Repair Plan		
<input checked="" type="checkbox"/> ICS 204	<input checked="" type="checkbox"/> ICS 220	<input checked="" type="checkbox"/> Training Message	<input type="checkbox"/>		
<input checked="" type="checkbox"/> ICS 205	<input type="checkbox"/> Incident Map	<input type="checkbox"/> Travel Map	<input type="checkbox"/>		
<input checked="" type="checkbox"/> ICS 206	<input checked="" type="checkbox"/> Weather Forecast	<input type="checkbox"/> Demob Plan	<input type="checkbox"/>		
<input checked="" type="checkbox"/> ICS 208	<input checked="" type="checkbox"/> Fire Behavior	<input checked="" type="checkbox"/> Finance Message	<input checked="" type="checkbox"/> ICS 214		
7. Prepared By: Roger Noon		Position/Title: PSC		Signature: 	
8. Approved by Incident Commander:		N. Schuler / S. Kavanaugh		Signature: 	
ICS 202					

ORGANIZATION ASSIGNMENT LIST (ICS 203)

1. Incident Name: Mineral		2. Operational Period: Date From: 7/18/2020		Date To: 7/19/2020	
		Time From: 0700		Time To: 0700	
3. Incident Commander(s) and Command Staff:			7. Operation Section:		
IC/UC's	N. Schuler / S. Kavanaugh		Operations	Chris Waters	
Deputy	R. Myers / N. Casci / B. Carter		Deputy Operations	Landon Haack	
Safety Officer	Chad Thompson / Ryan Danielsen (T)		Night Ops	Nick Brown	
Information Officer	Jeremy Rahn		Staging Area	Mineral	Mark Christensen
Liaison Officer	Kevin Pack		Branch	I	Aaron Latta
4. Agency/Organization Representatives:			Division/Group	A/C	Scott Grendahl / Robert Veverka (T)
Agency/Organization	Name		Division/Group	F	Schmit / Rhett Corning (T)
FKU Line Officer	Dustin Hail		Division/Group		
BLM Agency Admin.	Ben Blom		Division/Group		
BLM Agency Rep.	Mike Chiodini		Division/Group		
USFS	Pedro Martinez		Branch	V	Josh Taylor / Craig Covey (T)
CAL OES	Javier Lara		Division/Group	L	John Morgan / Christian Sherfy (T)
			Division/Group	M	Keith Swope / Tim Perkins (T)
			Division/Group	Z	Derek Steidley / Luke Bourgault (T)
			Division/Group		
			Division/Group		
			Branch	CONT. North	Craig Waag (12hr)
			Division/Group	North Dozer	Brian Ham
			Division/Group		
			Division/Group		
			Division/Group		
			Division/Group		
			Branch	CONT. West	Matt Brown (12hr)
			Division/Group	West Dozer	Travis Pederson / Thomas Pery (T)
5. Planning Section:			Division/Group	Road	John Garza (12hr)
Chief	Jeff Windham / Roger Noon		Division/Group		
Deputy			Division/Group		
Resource Unit Leader	A. Hubbs / K. O'Neil / G. Padilla / D. Brown (T) / D. McCarroll		Division/Group		
Situation Unit	K.Tsudama / K. Menet (T) / K. Clark (T) / R. Broomfield (T)		Branch	Firing	Brian Mackwood
Documentation Unit	Janet Arthur		Division/Group	Firing Group	Jake Read / Clay Lions (T)
Demobilization Unit	Stan Atchison		Division/Group		
GISS	Fred Postler		Branch	FSR	Titus Lucas
FBAN	Steve Volmer		Division/Group		
IMET	Dan Harty		Division/Group		
Training Tech Spec	Claudia Soiza		Air Operations Branch		Director: Matt Hill
			Air Support Group Supervisor		Byron Vance
			Air Tactical Group Supervisor		James Tully
6. Logistics Section			Helibase Manager		J. Collins / P. Michael (T)
Chief	Ken Lowe / Milford Ferguson				
Supply Unit	Amber Storey (T)		8. Finance/Administration Section:		
Facilities Unit	Scott Irvine		Chief	Chuck Carrol	
Ground Support Unit	Michael Esparza		Time Unit	Micah Mconnell	
Communications Unit	John Aguilera		Procurement Unit	Josh Shifrin	
Medical Unit	Justin Vanderhulst		Comp/Claims Unit	Cesar Nerey	
Motel Unit	Bryan Brewer / Matt Aldrich		Cost Unit	Ramona Jeffries	
Prepared By: Name:	Roger Noon	Position/Title:	PSC	Signature:	
ICS 203		Date/Time:	7/17/2020 2300 hours		

FIRE BEHAVIOR FORECAST

FORECAST NUMBER: 3	TYPE OF FIRE: WILDLAND
FIRE NAME: MINERAL CA-FKU-010219	OPERATIONAL PERIOD: JULY 18 0700-0700
DATE ISSUED: July 17, 2020	TIME ISSUED: 20:00
UNIT: FRESNO KINGS	SIGNED: <i>Stephen Volmer</i> Typed/printed: FBAN Stephen Volmer

INPUTS

WEATHER SUMMARY: Temperatures will be elevated through the weekend. Relative humidity will remain low, with poor overnight recovery. Winds will shift directions between the ridgetops and canyon bottoms. Be alert for periods of minimal wind activity between 21:00 and 07:00, this will cause the smoke to settle into the drainages.

Daytime high temperatures will be in the upper 90's, decreasing to the mid 70's in the evening. Minimum relative humidity will be between 20-25%. Winds upslope 4-8mph with gust to 18mph in the afternoon. Night time recovery will be minimal with humidity lowering to 35% and temperatures in the mid 70's. Nighttime downslope winds 2-5mph after 2100, with ridgetop winds from the Southeast 4-8 mph with gusts to 12mph. Expect heavy smoke to settle into the area overnight.

OUTPUTS

FIRE BEHAVIOR

GENERAL: Fuels will continue to dry out and are nearing critical levels. The primary fuels are cured grasses, decadent Chamise fields, Oak/Pine understory. The Northeast aspect will have large amounts of Oak/Pine understory, with brush filled drainages. The Southwest aspects have large amounts of grass, transitioning to dense Chamise fields in the upper elevations. Expect dangerous fire spread rates when wind, slope, and topography are in alignment throughout the area. The fire activity will increase in the late morning when the smoke layer clears, allowing for higher fuel temperatures, and up slope winds.

SPECIFIC:

GRASS: Rate of Spread....120 ft/min Flame Length....8 ft Spotting.... .30 mi Probability of Ignition 92%

BRUSH: Rate of Spread....110 ft/min Flame Length....22 ft Spotting.... .50 mi Probability of Ignition 92%

UNDERSTORY: Rate of Spread....10 ft/min Flame Length....3 ft Spotting.... .10 mi Probability of Ignition 92%

DIV A/C, M, Z- Minimal fire activity. Be alert for fire weekend timber, and deep-seated heat remaining in the Oak/Pine stands. Interior heavy fuels continue to burn down.

DIV F, L- Backing fire will produce roll-out that could initiate rapid slope reversal spreads. Be alert for low elevation interior spots in the drainages.

Sunset 7/17...20:17 Sunrise 7/18...05:59

AIR OPERATIONS: Gusty conditions will be present when transitioning across ridgelines. Expect to have limited visibility in the lower elevations of the fire early in the morning due to the abundance of smoke setting in. Upper level winds will be out of the South, and could smoke in the Northern side of the incident.

SAFETY

Do not get overly committed chasing spot fires into the fine flashy grass fuels without support.

Look out for fire weakened timber, and branches. They will release easily in gusty conditions.



MINERAL SAFETY MESSAGE

Maintain Situational Awareness

INCIDENT: Mineral	DATE: July 18, 2020 TIME: 0700-0700
Major Hazards and Risks: Steep Terrain, Hot Dry Weather, Hydration and Driving.	
<p>Firing Operations: Brief your crews, maintain LCES, and follow the Firing Operations Checklist. Ensure everyone is wearing PPE, watch for spots across the line. Report injuries to supervisor immediately.</p> <p>Fire Behavior: Fuels are receptive to fire spread. A small amount of wind on this dry fuel changes the game dramatically! Be alert to changes in wind direction and expect changes in fire behavior.</p> <p>Steep slopes/rolling material: Watch your footing while hiking in steep terrain. Be careful of loose rolling debris. Maintain separation and Situational Awareness. Watch for roll out.</p> <p>COVID 19: Practice Social Distancing maintain 6' separation, utilize masks and frequently wash / sanitize your hands. Monitor for symptoms and report immediately. More information available in the Safety Folder access through QR code on IAP.</p> <p>Valley Fever: Limit dust exposure. Utilize recirculation for A/C. More information available in the Safety Folder access through QR code on IAP.</p> <p>Personnel: Monitor yourself and those around you for fatigue. Drink fluids frequently and eat nutritious food regularly. As fatigue increases, injuries tend to increase as well. Keep an eye on your crew and partner.</p> <p>Driving: Slow Down! Drive defensively with headlights on and seatbelts fastened. Coordinate your movements on one-lane roads. Utilize A/C recirculation while on dirt roads. Maintain and monitor road conditions.</p> <p>Powerlines: Follow power line safety guidelines in IRPG, watch out for burned out power poles.</p> <p>Complacency: Having the same assignment on the same ground day after day can lead to complacency and make us more vulnerable to accidents. Maintain your situational awareness through to the end of your assignment.</p>	
<p style="text-align: center;"><u>Tailgate Safety</u> <u>Hazard Tree Safety</u></p> <p>Hazard trees both dead snags and live green trees, are one of the most common risks encountered on the fire line. All firefighters should frequently survey their work area for potential hazard trees.</p> <p style="text-align: center;">Review Hazard Tree Safety in your IRPG</p> <ul style="list-style-type: none"> • Watch out for stump holes. • Watch out for fire weakened trees and limbs. 	<p style="text-align: center;"><u>FIRE SUPPRESSION REPAIR</u></p> <ul style="list-style-type: none"> • Monitor safe working distances. • Utilize communication with heavy equipment operators (radio or hand signals). • Maintain accountability of personnel. • Avoid working below equipment, watch for rolling material.

Incident Safety Officer: Ryan Danielsen SOF1 (T)

Incident Commander: Sean Kavanaugh



MINERAL INCIDENT RISK ANALYSIS (ICS 215a)

DIV	HAZARDOUS ACTIONS/CONDITIONS	MITIGATIONS / WARNINGS / REMEDIES
ALL	BACKFIRING and BURNOUT OPERATIONS	Before beginning a backfiring or burnout operation, ensure that: Lookouts are posted, communications are established with both firing and holding teams, Escape routes and safety zones are established and not compromised by the firing operations. Ensure approval and relay to all adjoining forces. Follow the Firing Operations Checklist. Wear full PPE.
ALL	STEEP TERRAIN / ROLLING DEBRIS	Watch your footing while hiking in steep terrain. Be careful of loose rolling debris Maintain Situational Awareness and separation.
ALL	LINE CONSTRUCTION	Conduct thorough briefing for all personnel (inside rear cover IRPG). Ensure LCES in place prior to engagement (IRPG). Establish adequate safety zones (IRPG). Use Downhill Line Checklist (IRPG). Follow "Look Up, Look Down, Look Around" procedures (IRPG). Utilize Risk Management Process (IRPG).
ALL	FATIGUE / HEAT / DEHYDRATION	Be alert for signs of fatigue and take breaks as necessary. Monitor incoming resources for level of fatigue. Drink water before, during and after shifts, up to 1.5 gal. per shift. Be alert for signs of heat stress in yourself and others; use the buddy system. Eat small meals often and when possible.
ALL	COVID 19	Maintain 6' distance whenever possible. Utilize masks, frequent hand washing/sanitizing, disinfect common surfaces, follow Fresno County Public Health Guidelines. Monitor for symptoms, follow reporting procedure. Reference Safety folder from QR code on IAP.
ALL	VALLEY FEVER	Limit exposure to dust. Reference Safety folder from QR code on IAP. Monitor personnel for signs/symptoms.
ALL	DOZER SAFETY	Watch for rolling material. Monitor safe working distances. Avoid working below a Dozer. Utilize communication with the operator (radio or hand signals) Watch for signs indicating buried high-pressure gas lines Stay out of the dust.
ALL	POWER LINES	Follow <i>Power Line Safety</i> guidelines (IRPG) Communicate power line hazards to immediate supervisor. Flag area around downed power lines and deny access. Treat all downed power lines as energized.
ALL	AIRCRAFT OPERATIONS	Monitor air-to-ground frequency, they are your eyes in the sky. Use air-to-ground frequency to communicate with aircraft. Use clear, concise statements when directing aircraft.
L, F	HAZARD TREES	Identify and Isolate the area to provide for safety of others. Flag and make the proper notifications. Evaluate all trees prior to working under or near them. Don't fall any tree outside of your qualification.
A, C, Z	MOP UP	Conduct thorough briefing for all personnel. Don't become complacent, stay alert be prepared for hazards and new starts. Use all required PPE, including eye protection. Be alert for stump holes and root cavities. Minimize exposure to smoke, and rotate personnel.
Incident Name: Mineral CA-FKU-010219 ICS 215a		DATE PREPARED: July 17, 2020 1645hrs Prepared by: Ryan Danielsen SOF1(T)
		OPERATIONAL PERIOD 07-18-2020 0700-0700

ASSIGNMENT LIST (ICS 204 WF)

CONTROLLED UNCLASSIFIED
INFORMATION//BASIC

1. Incident Name: <p style="text-align: center;">Mineral</p>	2. Operational Period: Date From: 07/18/20 Date To: 07/19/20 Time From: 0700 Time To: 0700	3. Branch Division <p style="text-align: center;">I F</p> <p style="text-align: center;">Page 1 of 1 Foxtrot</p>
---	---	---

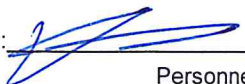
4. Operations Personnel:	
Operations Section Chief: Chris Waters	Night Ops: Nick Brown
Branch Director: Aaron Latta	Branch Safety: Mike Urquides
Division/Group Supervisor: Schmit / Rhett Corning (T)	Air Attack: James Tully

5. Resources Assigned:		** Resources Below in Bold are 12 Hour **					
Resource Identifier	ALS	LWD	Leader	Personnel	Request #	Hours	Reporting Location
STC BDU 9350C			Brett Taylor	18	E-30	0700-0700	DP-5
STC VNC 9325C	X		Scott Quirarte	19	E-29	0700-0700	DP-5
STC CNF 6631C			Joel Mortier	27	E-165	0700-1900	DP-5
STF MMU 5075F			Anthony Garcia	12	E-212	0700-0700	DP-5
STG BDU 9351G			Steve Ellenburg	33	C-10	0700-0700	DP-5
CRW CRANE VALLEY IHC			Matthew Dunlap	18	C-5	0700-1900	DP-5
CRW BEAR DIVIDE IHC			Brian Anderson	19	C-6	0700-1900	DP-5
CRW KRN GOLDEN EMPIRE			Paddrik Young	21	C-24	0700-1900	DP-5
CRW CNA 43A			Ryan Katz	18	C-18	0700-1900	DP-5
CRW CNA 43B			James Rauch	21	C-19	0700-1900	DP-5
STL KRN 9360L			Michael Grisedale	2	E-16	0700-0700	DP-5
STL TUU 9416L			Angelo Prandini	7	E-36	0700-0700	DP-5
DOZ BEU 4643						0700-0700	DP-5
W/T PVT E-11 A&CC			Crystal Avila	2	E-11	0700-0700	DP-5
W/T PVT E-13 A&G PUMPING			George Young	2	E-13	0700-0700	DP-5
W/T PVT E-42 TRAHAN			Nicholas Trahan	2	E-42	0700-0700	DP-5
FEMP ZUNIGA			Daniel Zuniga	1	O-235	0700-0700	DP-5
FEMT ROBBINS			Michael Robbins	1	O-197	0700-0700	DP-5

6. Work Assignments:
 Water roads to mitigate dust.
 Continue to support holding and firing operations.
 Continue to improve indirect control lines.

7. Special Instructions:

8. Communications							
Name	Ch	Function	Rx Freq	Rx Tone	Tx Freq	Tx Tone	Notes
CDF C2	1	COMMAND	151.2650	103.5 (T8)	159.3300		TONE 7, TONE 10 OR TONE 15
CDF T27	4	TACTICAL	159.3075	192.8 (T16)	159.3075	192.8 (T16)	
CDF T18	15	AIR TO GROUND	159.3450	192.8 (T16)	159.3450	192.8 (T16)	
CALCORD	13	MEDICAL	156.0750	156.7 (T6)	156.0750	156.7 (T6)	EMS COORDINATION
AIRGUARD	16	AIRGUARD	168.6250		168.6250	110.9 (T1)	

9. Prepared by: Name: Kyle O'Neil RESL Signature: 

ICS 204 Date/Time: 7/17/2020 2200 Personnel Count: 223

ASSIGNMENT LIST (ICS 204 WF)

CONTROLLED UNCLASSIFIED
INFORMATION//BASIC

1. Incident Name: <p style="text-align: center;">Mineral</p>	2. Operational Period: Date From: 07/18/20 Date To: 07/19/20 Time From: 0700 Time To: 0700	3. Branch Division <p style="text-align: center;">V L</p>
---	---	---

Page 1 of 1

4. Operations Personnel:	
Operations Section Chief: Chris Waters	Night Ops: Nick Brown
Branch Director: Josh Taylor / Craig Covey (T)	Branch Safety: Damien Juarez
Division/Group Supervisor: John Morgan / Christian Sherfy (T)	Air Attack: James Tully

5. Resources Assigned:							
** Resources Below in Bold are 12 Hour **							
Resource Identifier	ALS	LWD	Leader	Personnel	Request #	Hours	Reporting Location
STC SLM 2175C	X		Doug McCoun	16	E-213	0700-0700	DP-15
T/F XFR 5002			Jim Damico	17	E-28	0700-0700	DP-15
T/F XFR 5003			Lawrence French	17	E-31	0700-0700	DP-15
STG BDU 9357G			Arnold Sabino	34	C-9	0700-0700	DP-15
CRW SBC 10			Tyler Gilliam	19	C-4	0700-0700	DP-15
CRW VNC 11			Brian Heath	20	C-7	0700-0700	DP-15
DOZ SLU 3442			Justin Little	2	E-10	0700-0700	DP-15
DOZ PVT E-19 VARIAN			Greg Varian	2	E-19	0700-0700	DP-15
DOZ PVT E-20 A&CC			Crystal Avila	2	E-20	0700-0700	DP-15
DOZ PVT E-79 RBI			Randy Wilber	2	E-79	0700-0700	DP-15
W/T PVT E-14 BONESO			Derek Harms	2	E-14	0700-0700	DP-15
W/T PVT E-47 FIRELINE TRK			Kelly Wicks	2	E-47	0700-0700	DP-15
W/T PVT E-49 GASSAWAY			Norm Gassaway	2	E-49	0700-0700	DP-15
FEMP MCCARTHY			Shawn McCarthy	1	O-268	0700-0700	DP-15
FEMT REID			Alex Reid	1	O-140	0700-0700	DP-15

6. Work Assignments:
 Water roads to mitigate dust.
 Continue to support holding and firing operations.
 Identify suppression repair needs.
 Mop up 100 ft. in from control lines.

7. Special Instructions:

8. Communications							
Name	Ch	Function	Rx Freq	Rx Tone	Tx Freq	Tx Tone	Notes
CDF C2	1	COMMAND	151.2650	103.5 (T8)	159.3300		TONE 7, TONE 10 OR TONE 15
CDF T28	5	TACTICAL	151.1825	192.8 (T16)	151.1825	192.8 (T16)	
CDF T18	15	AIR TO GROUND	159.3450	192.8 (T16)	159.3450	192.8 (T16)	
CALCORD	13	MEDICAL	156.0750	156.7 (T6)	156.0750	156.7 (T6)	EMS COORDINATION
AIRGUARD	16	AIRGUARD	168.6250		168.6250	110.9 (T1)	

9. Prepared by: Name: Kyle O'Neil RESL Signature:

ICS 204 Date/Time: 7/17/2020 2200 Personnel Count: 139

ASSIGNMENT LIST (ICS 204 WF)

CONTROLLED UNCLASSIFIED
INFORMATION//BASIC

1. Incident Name: <p style="text-align: center;">Mineral</p>	2. Operational Period: Date From: 07/18/20 Date To: 07/19/20 Time From: 0700 Time To: 0700	3. Branch Division CONT. West West Dozer
---	---	---

4. Operations Personnel:		Page 1 of 1
Operations Section Chief: Chris Waters	Night Ops: Nick Brown	
Branch Director: Matt Brown (12hr)	Branch Safety:	
Division/Group Supervisor: Travis Pederson / Thomas Perry (T)	Air Attack: James Tully	

5. Resources Assigned:	** Resources Below in Bold are 12 Hour **						
Resource Identifier	ALS	LWD	Leader	Personnel	Request #	Hours	Reporting Location
STL VNC 9323L			Ken VanWig	8	E-33	0700-0700	ICP
DOZ PVT E-77 SMITH			Justin Smith	2	E-77	0700-0700	ICP
DOZ PVT E-78 DUSI			Michael Dusi	2	E-78	0700-0700	ICP
DOZ PVT E-80 DYE			Kevin Dye	2	E-80	0700-0700	ICP
DOZ PVT E-81 WILBER			Brad Dunn	2	E-81	0700-0700	ICP
DOZ PVT E-82 HENDRIX			Brent Hendrix	2	E-82	0700-0700	ICP
DOZ PVT E-236			Mark Miscar	2	E-236	0700-0700	ICP
DOZ PVT E-237			Chris Sherer	2	E-237	0700-0700	ICP
DOZ PVT E-241				3	E-241	0700-0700	ICP
DOZ STF 51			Kyle Crow	3	E-35	0700-1900	ICP
HEQB BRIDGER			Justin Bridger	1	O-268	0700-0700	ICP
HEQB(T) BRYSON			Scott Bryson	1	O-30.68	0700-0700	ICP
HEQB(T) HICKEY			Tyler Hickey	1	O-30.65	0700-0700	ICP

6. Work Assignments:
Prepare and construct secondary control lines.

7. Special Instructions:

8. Communications							
Name	Ch	Function	Rx Freq	Rx Tone	Tx Freq	Tx Tone	Notes
CDF C2	1	COMMAND	151.2650	103.5 (T8)	159.3300		TONE 7, TONE 10 OR TONE 15
CDF T36	7	TACTICAL	151.1525	192.8 (T16)	151.1525	192.8 (T16)	WEST DOZER & ROADS
CDF T18	15	AIR TO GROUND	159.3450	192.8 (T16)	159.3450	192.8 (T16)	
CALCORD	13	MEDICAL	156.0750	156.7 (T6)	156.0750	156.7 (T6)	EMS COORDINATION
AIRGUARD	16	AIRGUARD	168.6250		168.6250	110.9 (T1)	

9. Prepared by: Name:	Kyle O'Neil	RESL	Signature:
ICS 204	Date/Time: 7/17/2020 2200		Personnel Count: 31

ICS 205 - INCIDENT RADIO COMMUNICATIONS PLAN										CONTROLLED UNCLASSIFIED INFORMATION//BASIC
1. Incident Name: Mineral			2. Date/Time Prepared Date: 07/17/2020 Time: 2000			3. Operational Period: Date From: 07/18/20 Time From: 0700 Date To: 07/19/20 Time To: 0700				
4. Communications										
Ch#	Function	Name	Assigned To	Rx Freq	Rx Tone	Tx Freq	Tx Tone	Notes		
1	COMMAND	CDF C2	INCIDENT WIDE	151.2650	103.5 (T8)	159.3300		TONE 7, TONE 10 OR TONE 15		
2										
3	TACTICAL	CDF T26	BRANCH I DIV A/C	159.2925	192.8 (T16)	159.2925	192.8 (T16)			
4	TACTICAL	CDF T27	BRANCH I DIV F	159.3075	192.8 (T16)	159.3075	192.8 (T16)			
5	TACTICAL	CDF T28	BRANCH V DIV L	151.1825	192.8 (T16)	151.1825	192.8 (T16)			
6	TACTICAL	CDF T35	BRANCH I DIV M, DIV Z	159.3225	192.8 (T16)	159.3225	192.8 (T16)			
7	TACTICAL	CDF T36	CONTINGENCY WEST	151.1525	192.8 (T16)	151.1525	192.8 (T16)	WEST DOZER & ROADS		
8	TACTICAL	NIFC T5	CONTINGENCY NORTH	166.725		166.725		NORTH DOZER GROUP		
9	TACTICAL	NIFC T6	FIRING GROUP	166.775		166.775		FIRING (GROUND)		
10	TACTICAL	NIFC T7	FIRE SUPP REPAIR	168.25		168.25		FIRE SUPPRESSION REPAIR		
11										
12										
13	MEDICAL	CALCORD	ALL DIVS	156.075	156.7 (T6)	156.075	156.7 (T6)	EMS COORDINATION		
14	A/G FIRING	CDF T22	FIRING GROUP	159.4050	192.8 (T16)	159.4050	192.8 (T16)	FIRING (AIR RESOURCES)		
15	AIR TO GROUND	CDF T18	ALL DIVS	159.3450	192.8 (T16)	159.3450	192.8 (T16)			
16	AIRGUARD	AIRGUARD	ALL DIVS	168.625		168.625	110.9 (T1)			
17										
18										
19										
20	AIRGUARD	AIRGUARD	ALL DIVS	168.625		168.625	110.9 (T1)			
5. Special Instructions										
6. Prepared by (Communications Unit Leader): Name: JOHN MCCORMICK, COML(T)										
Signature: <i>John McCormick</i>										
Date/Time: 07/17/2020 2000										
ICS 205 - CONTROLLED UNCLASSIFIED INFORMATION//BASIC										

FIRING OPERATION CHECKLIST

Location: _____

Date: _____ Time: _____

Firing Supervisor _____

1. Personnel Briefing

- Objectives
- Conditions (fire environment)
- Resource assignments identified
 - Firing personnel
 - Holding forces
 - Lookouts
- Ignition plan/sequence
- Communication Plan
- Contingency Plan
- Safety issues

2. Go / No-Go

- All personnel briefed
- Weather forecast reviewed
- Resources in place
- Lookouts posted as needed
- Anchor and termination firing points identified
- Communications systems in place
- Fire behavior forecast reviewed
- Escape routes and safety zones established and made known
- Adjoining forces/Air Attack notified

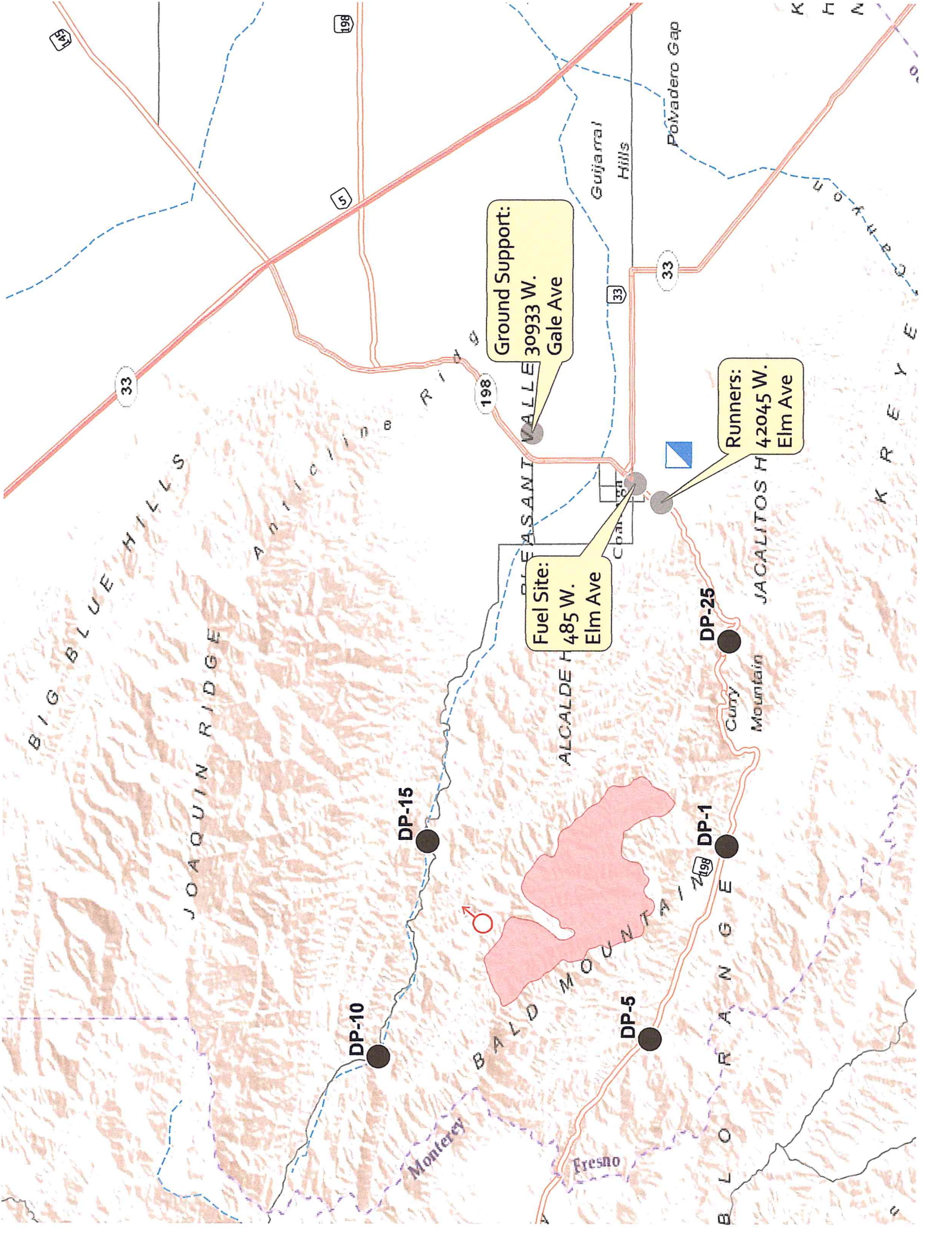
3. Approval Prior To Firing

- Division Supervisor
- Branch Director
- Operations

4. Other Notifications

- Other: _____
- Other: _____

Attach Firing Operations Checklist to ICS-214



Ground Support:
30933 W.
Gale Ave

Fuel Site:
485 W.
Elm Ave

Runners:
42045 W.
Elm Ave

DP-10

DP-15

DP-5

DP-1

DP-25

BIG BLUE HILLS
JOAQUIN RIDGE

BALD MOUNTAIN
Monterey
Fresno

PLEASANT VALLEY
ALCALDE H
Cury Mountain

Gujamaal Hills
Potrero Gap

JACALITOS H

BLOORA RANGE

TRAINING SPECIALIST MESSAGE

**All Mineral Incident Trainees
Beat the Rush!!!**

In order to receive documented credit for your training assignment you must register with the Incident Training Specialist.

The Training Specialist is available immediately following the morning Briefing.

Bring the following documents to register:

- **ICS Qualification Card**
- **Position Task Book**

Trainee Data Forms are available at the Training Office

Remember: No documentation – it didn't happen!

Claudia Soiza - 949 632-7813

**Incident Trainee/Trainer Data Form
Mineral Incident CA-FKU-010219**

Training Specialist: Claudia Soiza 949.632.7813

- All Incident trainees, including those on Firefighting Modules at your earliest opportunity complete this form and see the Training Specialist.
- Prior to or as you process through DEMOB, remember to close your training package. To close your training package, bring: 1) A performance rating from your trainer. (ICS 225)
2) Your task book that has as many entries as possible by your Trainer.

Trainee Data

Trainee Name: _____ ICS Trainee Position: _____

Request # (A,C,E, or O): _____ Agency Designator (Ex. CA-RRU): _____

Ordered as Trainee? Y N Priority Trainee ___ Local Forest Trainee ___ IMT Trainee

Date Assigned: _____ Cell / Contact # While on Incident: _____

Training Records Mailed To: (Fire Chief, Training Officer):

Name: _____ Title _____

Name of Agency/Unit: _____

Agency/Unit Address: _____

City: _____ State: _____ Zip Code: _____ Phone: _____

Trainee Prerequisites

1. Possesses valid Qualification Card or agency certification card? ___ Yes ___ No

2. Trainee has current position task book issued by home unit? ___ Yes ___ No

Current Task Book Progress (Circle) 0% 25% 50% 75% 90%

Priority Open Task in PTB (What do you need to accomplish on this incident?)

Trainer/Evaluator Data

Trainer / Evaluator Name: _____ ICS position on fire: _____

Home Unit: _____ Agency Designator (Ex CA-RRU): _____

Request # (A,C,E,O): _____

Work Address: _____

City: _____ State: _____ Zip Code: _____

Cell / Contact While on Incident: _____

MINERAL FINANCE MESSAGE

- Check in with the TIME unit
- Suppliers check list and report to TIME unit
- DIVS are responsible for completing hired equipment shift tickets every day. See Shift Ticket example
- Off-site feeding:
Those staying in Tachi Palace Casino –
Order food to go at Tachi Restaurant
Sign AO-341.
- Use of CAL CARD is authorized if lodging in Hanford, Lemoore, or Kettleman City.

Finance Contacts	
FSC1 – Chuck Carroll 408-472-1612	COMP – Cesar Nerey 925-407-6363
TIME – Micah McConnell 530-635-7269	PROC – Josh Shifrin 310-487-9145

12HR LINE RESOURCE – 1 OPERATOR

EMERGENCY SHIFT TICKET and EVALUATION FORM The responsible Government Officer will complete this form each shift.					Contractor Name THE BEST DOZERS LLC						
Incident or Project Name MINERAL		Incident Number CAFKU010219		Request Number E-555		Operator #1 FIRST & LAST	Operator #2 -				
Agreement Number MMU-0000015955					Operator Furnished By: <input checked="" type="checkbox"/> Contractor <input type="checkbox"/> Government						
Equipment Make 2004 CAT			Equipment Model / Type D6N / TYPE II E			Operating Supplies Furnished By: <input checked="" type="checkbox"/> Contractor <input type="checkbox"/> Government					
Serial Number COMPLETE VIN#			License Number -			Equipment Status Inspected <input type="checkbox"/> Under Agreement <input checked="" type="checkbox"/>					
Equipment Use (Circle) Hours Days / Miles					Released by Government <input type="checkbox"/>		Withdrawn by Contractor <input type="checkbox"/>				
Date Mo / Day	Start	Stop	Work	Assignment		Remarks/Comments**					
7/17	0001	0700	7	OFF SHIFT		1 OPERATOR NO DAMAGE / NO CLAIM					
7/17	0701	1900	12	DIV X							
7/17	1901	2400	5	OFF SHIFT							
Vendor Rating					Govt. Rep. Name and Position – PRINT						
Met Performance Expectations					Poor*	Avg.	Good	Exc.	N/A	Print Your Name	
Equipment in Safe Working Condition					VENDOR RATING MUST BE DONE					Govt. Rep. Signature	
Operator Skill Level										Your Signature	
Operates Safely										Contractor Signature	
Operator's Cooperation Level										John Smith	
Overall Performance										Date	
					7/17/2020		1900		CAL FIRE 297 (Rev 3-2011)		
* NOTE: any rating of POOR requires an explanation in Comment Section.					** Final evaluation or for more documentation, use a CALFIRE Form 230 or equivalent.						

24HR LINE RESOURCE – 2 OPERATOR

EMERGENCY SHIFT TICKET and EVALUATION FORM The responsible Government Officer will complete this form each shift.					Contractor Name THE BEST DOZERS LLC						
Incident or Project Name MINERAL		Incident Number CAFKU010219		Request Number E-444		Operator #1 FIRST & LAST	Operator #2 FIRST & LAST				
Agreement Number MMU-0000015953					Operator Furnished By: <input checked="" type="checkbox"/> Contractor <input type="checkbox"/> Government						
Equipment Make 1999 PETERBILT 379			Equipment Model / Type TRANSPORT 18 WHEEL			Operating Supplies Furnished By: <input checked="" type="checkbox"/> Contractor <input type="checkbox"/> Government					
Serial Number COMPLETE VIN#			License Number 12345A1			Equipment Status Inspected <input type="checkbox"/> Under Agreement <input checked="" type="checkbox"/>					
Equipment Use (Circle) Hours Days / Miles					Released by Government <input type="checkbox"/>		Withdrawn by Contractor <input type="checkbox"/>				
Date Mo / Day	Start	Stop	Work	Assignment		Remarks/Comments**					
7/17	0701	2400	17	DIV X		2 OPERATORS NO DAMAGE / NO CLAIM					
7/18	0001	0700	7	DIV X							
Vendor Rating					Govt. Rep. Name and Position – PRINT						
Met Performance Expectations					Poor*	Avg.	Good	Exc.	N/A	Print Your Name	
Equipment in Safe Working Condition					VENDOR RATING MUST BE DONE					Govt. Rep. Signature	
Operator Skill Level										Your Signature	
Operates Safely										Contractor Signature	
Operator's Cooperation Level										John Smith	
Overall Performance										Date	
					7/18/2020		0700		CAL FIRE 297 (Rev 3-2011)		
* NOTE: any rating of POOR requires an explanation in Comment Section.					** Final evaluation or for more documentation, use a CALFIRE Form 230 or equivalent.						



MINERAL PUBLIC INFORMATION



Incident Information Line: 559-961-7102

Email pictures to: mineralfire2020@gmail.com

MEDIA

California State Penal Code Section 409.5(d) allows the news media to enter scenes of disaster, riot, or civil disturbance. Properly identified members of the news media should not be restricted from entering the locations specified within the code, even if the area presents a danger to them. Media members should be advised of the nature of possible danger. Members of the media do not have the right to access crime scenes or any area where their presence may interfere with incident operations, mitigation or evidence collection.

- The media may only access private property with the property owner's permission. Fire personnel cannot provide members of the media with authorization to enter private property.
- If approached and questioned by the media and/or the public, talk about your assignment or task at hand. If need be, direct the questioning party to the incident PIO.
- Do not speculate or give opinions
- There is no such thing as an "off the record" comment.

CAL FIRE SOCIAL MEDIA POLICY (Social Media 0691)

Social Media is increasingly being used by public agencies and the media as well as the public. This form of communication continues to grow rapidly in order to supply the public's desire for instant information gratification. All personnel assigned to a CAL FIRE incident will adhere to the CAL FIRE Social Media Policy. Further information about the CAL FIRE Social Media Policy can be obtained from the Information Officer. If you are uncertain, please ask. **Do not post:**

- Inappropriate information, pictures or videos
- Opinions regarding the incident or policy
- Endorsements of any kind

PICTURES AND VIDEO OF INCIDENT

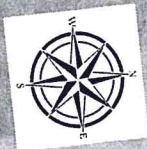
We are in a new era of media. Media no longer means the news/broadcast industry but now refers to anyone that has the capability to shoot video and or photographs and post them onto social media in a matter of minutes. Unfortunately we have seen some instances of video or photographs that have depicted unsafe, unprofessional or embarrassing circumstances which are a serious breach of ethics. When this happens it reflects poorly on all that are attached to this incident. Posting an inappropriate video, photo or blog comment could have unwanted effects. It may be unsafe to shoot photos or video and a firefighter who is concentrating on a camera can't be looking up, down and all around.

LOST AND FOUND

The Information staff will manage *Lost and Found* items for the incident. If you have lost an item, leave your contact information and what you have lost at the Information trailer. If you have found an item on the incident, bring the item to the Information trailer.

MAIL SERVICE

The Information staff will assist you in mailing and receiving letters and packages.



MINERAL BASE CAMP

FOR SUPPLY,
ENTER FROM
W. ELM AVE.

SUPPLY

LOGS

FACILITIES

FEEDING
FEEDING
FEEDING

KITCHEN

RADIO REPAIR

MEDICAL

HOTELS/ORDERING

TIME/EQUIPMENT

COMM

INCINET

IC

PLANNING
TENT

BRIEFING
AREA

COST/PROCUREMENT

LUNCHES/
ICE/WATER

CDCR

SAFETY/LAW LIAISON

PIO/OES

COPY
BUS

IMET/
FBAN

RESOURCES

TRAINING/DOCS

FINANCE/COMP

CHECK-IN/
DEMOS

SLEEPER
TRAILERS

CAL MAT

SHOWERS

LAUNDRY

W. LUCILLE AVE

ENTRANCE
ONE-WAY TRAFFIC IN
EFFECT

PARKING

SIT
GIS

OPS

PARKING

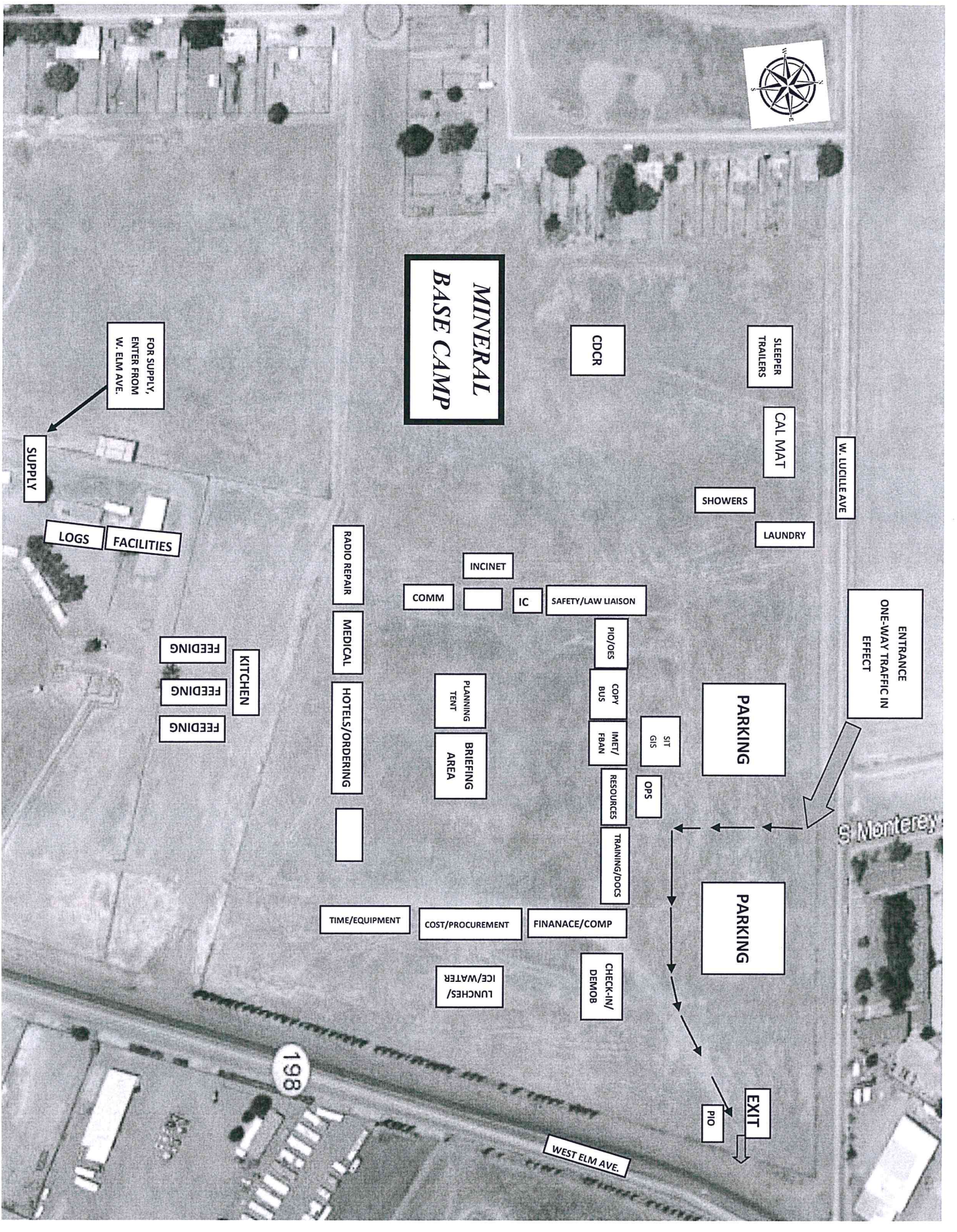
EXIT

PIO

WEST ELM AVE.

198

S Monterey





COVID-19

PROTECT YOURSELF AND OTHERS

Know How it Spreads

- The best way to prevent illness is to avoid being exposed to this virus.
- The virus is spread:
 - ✓ between people who are in **close contact** with each other.
 - ✓ through respiratory droplets produced when an infected person coughs, sneezes or talks. **Breathing in the** droplets or getting them on your hands and then transferring them into your mouth, nose or eyes will infect you with the virus.

Know how to Protect Yourself and Others

- **Cover your mouth and nose** with a cloth face cover when around others.
A face cover is **not** a substitute for social distancing.
- **Wash your hands often with soap and water.**
If soap and water are not readily available, use a hand sanitizer that contains at least 60% alcohol.
- **Avoid touching your eyes, nose, and mouth.**
- **Avoid close contact**
As much as possible, maintain 6 feet of distance between yourself and others.
- **Cover coughs and sneezes** – keep your fluids to yourself!

Clean and Disinfect

- Clean AND disinfect frequently touched surfaces often.

Monitor Your Health Daily

- Be alert for symptoms:
 - Fever, cough, difficulty breathing, headache, sore throat, etc.
- Advise your supervisor as soon as you start having symptoms.

Promotion, preservation and protection of the community's health

1221 Fulton Street / P. O. Box 11867, Fresno, CA 93775

(559) 600-3357 FAX (559) 600-7629

The County of Fresno is an Equal Employment Opportunity Employer

www.co.fresno.ca.us www.fcdph.org

