

# INCIDENT ACTION PLAN

# MINERAL INCIDENT

CA-FKU-010219



## OPERATIONAL PERIOD



7/19/2020 0700  
to  
7/20/2020 0700



# INCIDENT OBJECTIVES (ICS 202)

<b>1. Incident Name:</b> <p style="text-align: center;"><b>Mineral</b></p>	<b>2. Operational Period:</b>	Date From: 7/19/2020 Time From: 0700	Date To: 7/20/2020 Time To: 0700
---	-------------------------------	---	-------------------------------------

**3. Objective(s):**

- Management Objectives**
- Provide for emergency personnel and public safety at all times.
  - Protect property, improvements, and infrastructure.
  - Ensure repopulation takes place in a quick, efficient, and effective manner.
  - Ensure coordinated, timely and accurate release of public information.
  - Foster and maintain relationships with all cooperators and stakeholders.
  - Protect economic, natural, cultural and heritage resources.
  - Maintain fiscal accountability and keep costs commensurate with values at risk.
- Control Objectives**
- Keep the fire North of HWY 198.
  - Keep the fire South of Los Gatos Creek Road.
  - Keep the fire East of San Benito / Monterey County Line.
  - Keep the fire West of Parsons Ridge.

**General Situational Awareness:**

Steep and rugged terrain, critically dry and receptive fuel beds, active area for fire history and drought stressed trees.

**5. Site Safety Plan Required?**

Approved Site Safety Plan(s) Located at:

**6. Incident Action Plan**

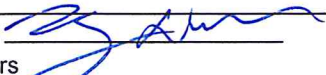
- |   |  |  |  |
|---|--|--|--|
| <input checked="" type="checkbox"/> ICS 203 | <input checked="" type="checkbox"/> ICS 215A         | <input type="checkbox"/> Phone List                  | <input checked="" type="checkbox"/> Fire Suppression Repair Plan |
| <input checked="" type="checkbox"/> ICS 204 | <input checked="" type="checkbox"/> ICS 220          | <input checked="" type="checkbox"/> Training Message | <input type="checkbox"/>   |
| <input checked="" type="checkbox"/> ICS 205 | <input type="checkbox"/> Incident Map                | <input type="checkbox"/> Travel Map                  | <input type="checkbox"/>   |
| <input checked="" type="checkbox"/> ICS 206 | <input checked="" type="checkbox"/> Weather Forecast | <input type="checkbox"/> Demob Plan                  | <input type="checkbox"/>   |
| <input checked="" type="checkbox"/> ICS 208 | <input checked="" type="checkbox"/> Fire Behavior    | <input checked="" type="checkbox"/> Finance Message  | <input checked="" type="checkbox"/> ICS 214                      |

**7. Prepared By:** Roger Noon      Position/Title: PSC      Signature:

**8. Approved by Incident Commander:** N. Schuler / S. Kavanaugh      Signature:



## ORGANIZATION ASSIGNMENT LIST (ICS 203)

<b>1. Incident Name:</b> Mineral		<b>2. Operational Period: Date From:</b> 7/19/2020 <b>Time From:</b> 0700		<b>Date To:</b> 7/20/2020 <b>Time To:</b> 0700	
<b>3. Incident Commander(s) and Command Staff:</b>			<b>7. Operation Section:</b>		
IC/UC's	N. Schuler / S. Kavanaugh		Operations	Chris Waters	
Deputy	R. Myers / N. Casci / B. Carter		Deputy Operations	Landon Haack	
Safety Officer	Chad Thompson / Ryan Danielsen (T)		Night Ops	Nick Brown	
Information Officer	Jeremy Rahn		Staging Area	Mineral	Mark Christensen
Liaison Officer	Kevin Pack		Branch	I	Joseph Felix
<b>4. Agency/Organization Representatives:</b>			Division/Group	A/C	Von Mason / Steven Cabrera (T)
Agency/Organization	Name		Division/Group	F	Matt Brown / Jeremiah Karlonas (T)
FKU Line Officer	Dustin Hail		Division/Group		
BLM Agency Admin.	Ben Blom		Division/Group		
BLM Agency Rep.	Mike Chiodini		Division/Group		
USFS	Pedro Martinez		Branch	V	M. Jonsson / D. Breshears (T)
CAL OES	Javier Lara		Division/Group	L	Jed Skrobecky / Jeffrey Chase (T)
			Division/Group	M/Z	Chris Martinelli / Jennifer Corning (T)
			Division/Group		
			Division/Group		
			Division/Group		
			Branch	Cont.	Craig Waag (12hr)
			Division/Group	North Dozer	Nick Ciapponi
			Division/Group	West Dozer	D. Barnett / B. Martin (T)
			Division/Group	Roads	John Garza
			Division/Group		
			Division/Group		
			Branch	Firing	Bill Lopez / Shawn Raley (T)
			Division/Group	Firing Group	Cole Periera
<b>5. Planning Section:</b>			Division/Group		
Chief	Jeff Windham / Roger Noon		Division/Group		
Deputy			Division/Group		
Resource Unit Leader	A. Hubbs / K. O'Neil / G. Padilla / D. Brown (T) / D. McCarroll		Division/Group		
Situation Unit	K. Tsudama / K. Menet (T) / K. Clark (T) / R. Broomfield (T)		Branch	FSR	Lucas Titus (12hr)
Documentation Unit	Janet Arthur		Division/Group	FSR	
Demobilization Unit	Stan Atchison		Division/Group		
GISS	Fred Postler		Division/Group		
FBAN	Steve Volmer		Division/Group		
IMET	Dan Harty		Division/Group		
Training Tech Spec	Claudia Soiza		<b>Air Operations Branch</b>		<b>Director:</b> Matt Hill
			Air Support Group Supervisor		Byron Vance
			Air Tactical Group Supervisor		James Tully
<b>6. Logistics Section</b>			Helibase Manager		J. Collins / P. Michael (T)
Chief	Ken Lowe / Milford Ferguson				
Supply Unit	Amber Storey (T)		<b>8. Finance/Administration Section:</b>		
Facilities Unit	Scott Irvine		Chief	Chuck Carrol	
Ground Support Unit	Michael Esparza		Time Unit	Micah Mconnell	
Communications Unit	John Aguilera		Procurement Unit	Josh Shifrin	
Medical Unit	Justin Vanderhulst		Comp/Claims Unit	Cesar Nerey	
Motel Unit	Bryan Brewer / Matt Aldrich		Cost Unit	Ramona Jeffries	
<b>Prepared By: Name:</b> Roger Noon		<b>Position/Title:</b> PSC	<b>Signature:</b> 		
<b>ICS 203</b>		<b>Date/Time:</b> 7/18/2020 2300 hours			<small>NIMS IAP</small>



## INCIDENT Weather Forecast



**FORECAST NO:** 4      **NAME OF FIRE:** Mineral Fire  
**PREDICTION FOR:** Sun-Mon 0700-0700      **UNIT:** CALFIRE Fresno Kings  
**SHIFT DATE:** July 19-20, 2020      **Incident Meteorologist:** Dan Harty  
**FORECAST ISSUED:** 1900 PDT July 18, 2020

---

### *...Hot and Dry with Breezy Conditions in the Afternoon and Evening...*

**WEATHER DISCUSSION:** Little changes are expected today as high pressure remains in control. Light terrain driven winds this morning will increase by afternoon with some gusts in the upper teens. Winds will decrease again after sunset with warm and dry conditions over most of the fire area overnight. Division F will be the exception where drainage flow will cool things down more along with better humidity recovery. A slight downward trend in temperatures along with an uptick in humidity is expected Monday through Wednesday as an offshore low pressure system is expected to move inland. This system will also bring increased onshore flow that could result in stronger westerly wind gusts around midweek.

---

### **WEATHER FORECAST for SUNDAY:**

**WEATHER:** Smoke, otherwise sunny.

**MAX TEMPERATURES:** 91-99°

**MIN HUMIDITY:** 19-25%

#### **20 FOOT WINDS:**

**SLOPE/VALLEY -** Downslope 2-5 mph through 0800 then becoming upslope/upcanyon 4-8 mph with gusts to around 18 mph after noon.

**RIDGETOP -** Southeast 4-8 mph with gusts around 12 mph.

---

### **WEATHER FORECAST for SUNDAY NIGHT:**

**WEATHER:** Smoke, otherwise clear.

**MIN TEMPERATURES:** 70-77° (Div F 62-69°)

**MAX HUMIDITY:** 35-45% (Div F 45-65%)

#### **20-FOOT WINDS:**

**SLOPE/VALLEY -** Downslope 2-5 mph after 2100.

**RIDGETOP -** Southeast 3-6 mph with gusts to 9 mph.

---

### **OUTLOOK for Monday and Tuesday:**

Areas of smoke, a few high clouds possible, otherwise mostly clear skies. Maximum temperatures 88-97°. Minimum relative humidity 21-28 percent followed by poor overnight recovery of 35-45 percent. Winds will continue to be terrain influenced with moderate afternoon and evening gusts 15 to 20 mph.

---



## FIRE BEHAVIOR FORECAST

<b>FORECAST NUMBER:</b> 5	<b>TYPE OF FIRE:</b> WILDLAND
<b>FIRE NAME:</b> MINERAL CA-FKU-010219	<b>OPERATIONAL PERIOD:</b> JULY 19 0700-0700
<b>DATE ISSUED:</b> July 18, 2020	<b>TIME ISSUED:</b> 20:00
<b>UNIT:</b> FRESNO KINGS	<b>SIGNED:</b> <i>Stephen Volmer</i> <b>Typed/printed:</b> FBAN Stephen Volmer

### INPUTS

**WEATHER SUMMARY:** Hot dry conditions with low relative humidity, with poor overnight recovery. Winds will shift directions between the ridgetops and canyon bottoms. Be alert for periods of minimal wind activity between 21:00 and 07:00, this will cause the smoke to settle into the drainages.

**Remember...Wind goes where water flows.**

Daytime high temperatures will be in the upper 90's, decreasing to the mid 70's in the evening. Minimum relative humidity will be between 19-25%. Winds upslope 4-8mph with gust to 18mph in the afternoon. Night time recovery will be minimal with humidity lowering to 35% and temperatures in the mid 70's. Nighttime downslope winds 2-5mph after 2100, with ridgetop winds from the Southeast 4-8 mph with gusts to 9mph. **DIV F humidity will climb after sundown to 65%.**

### OUTPUTS

#### FIRE BEHAVIOR

**GENERAL:** Fuels have continued to dry out and are nearing critical levels. The primary fuels are cured grasses, decadent Chamise fields, Oak/Pine understory. The Northeast aspect has large amounts of Oak/Pine understory, with brush filled drainages. The Southwest aspects have large amounts of grass, transitioning to dense Chamise fields in the upper elevations. Expect dangerous fire spread rates when wind, slope, and topography are in alignment throughout the area. The fire activity will increase in the late morning when the smoke layer clears, allowing for higher temperatures, and increased up slope/up canyon winds.

#### SPECIFIC:

**GRASS:** Rate of Spread....120 ft/min Flame Length....8 ft Spotting.... .30 mi Probability of Ignition 92%

**BRUSH:** Rate of Spread....110 ft/min Flame Length....22 ft Spotting.... .50 mi Probability of Ignition 92%

**UNDERSTORY:** Rate of Spread....10 ft/min Flame Length....3 ft Spotting.... .10 mi Probability of Ignition 92%

**DIV A/C, M/Z- Minimal fire activity. Be alert for fire weekend timber, and deep-seated heat remaining in the Oak/Pine stands. Interior heavy fuels continue to burn down.**

**DIV L- Heavy fuels will continue to burn down. Fire weakened timber will begin to release.**

**DIV F- Lighter brush and grass fuels will still produce rollout and spots.**

Sunset 7/17...20:15 Sunrise 7/18...06:00

**AIR OPERATIONS:** Expect to have limited visibility in the lower elevations of the fire early in the morning due to the abundance of smoke setting in. Upper level winds will be out of the South, and could smoke in the Northern side.

### SAFETY

**Fire weakened timber and branches will hamper driving conditions on interior roads.**

**Stump holes will retain deep seated heat for days, be cautious while working in the burn.**



## MINERAL SAFETY MESSAGE

### Maintain Situational Awareness

**INCIDENT:** Mineral | **DATE:** July 19, 2020 | **TIME:** 0700-0700

**Major Hazards and Risks: Steep Terrain, Hot Dry Weather, Complacency, Hydration and Driving.**

**Firing Operations:** Brief your crews, maintain LCES, and follow the Firing Operations Checklist. **Ensure everyone is wearing PPE**, watch for spots across the line. Report injuries to supervisor immediately.

**Complacency:** Having the same assignment on the same ground day after day can lead to complacency and make us more vulnerable to accidents. Maintain your situational awareness through to the end of your assignment.

**Fire Behavior:** Fuels are receptive to fire spread. A small amount of wind on this dry fuel changes the game dramatically! Be alert to changes in wind direction and expect changes in fire behavior.

**Steep slopes/rolling material:** Watch your footing while hiking in steep terrain. Be careful of loose rolling debris. Maintain separation and Situational Awareness. Watch for roll out.

**COVID 19:** Practice Social Distancing maintain 6' separation, utilize masks and frequently wash / sanitize your hands. Monitor for symptoms and report immediately. More information available in the Safety Folder access through QR code on IAP.

**Valley Fever:** Limit dust exposure. Utilize recirculation for A/C. More information available in the Safety Folder access through QR code on IAP.

**Personnel:** Monitor yourself and those around you for fatigue. Drink fluids frequently and eat nutritious food regularly. As fatigue increases, injuries tend to increase as well. Keep an eye on your crew and partner.

**Driving:** Slow Down! Drive defensively with headlights on and seatbelts fastened. Coordinate your movements on one-lane roads. Utilize A/C recirculation while on dirt roads. **Maintain and monitor road conditions.**

**Powerlines:** Follow power line safety guidelines in IRPG, watch out for burned out power poles.

#### Tailgate Safety Hazard Tree Safety

Hazard trees both dead snags and live green trees, are one of the most common risks encountered on the fire line. All firefighters should frequently survey their work area for potential hazard trees.

Review Hazard Tree Safety in your IRPG

- Watch out for stump holes.
- Watch out for fire weakened trees and limbs.

#### FIRE SUPPRESSION REPAIR

- Monitor safe working distances.
- Utilize communication with heavy equipment operators (radio or hand signals).
- Maintain accountability of personnel.
- Avoid working below equipment, watch for rolling material.





## MINERAL INCIDENT RISK ANALYSIS (ICS 215a)

DIV	HAZARDOUS ACTIONS/CONDITIONS	MITIGATIONS / WARNINGS / REMEDIES
ALL	<b>BACKFIRING and BURNOUT OPERATIONS</b>	Before beginning a backfiring or burnout operation, ensure that: Lookouts are posted, communications are established with both firing and holding teams, Escape routes and safety zones are established and not compromised by the firing operations. Ensure approval and relay to all adjoining forces. Follow the Firing Operations Checklist. Wear full PPE.
ALL	<b>STEEP TERRAIN / ROLLING DEBRIS</b>	Watch your footing while hiking in steep terrain. Be careful of loose rolling debris Maintain Situational Awareness and separation.
ALL	<b>MOP UP / COMPLACENCY</b>	<b>Don't become complacent, stay alert be prepared for hazards and new starts.</b> Use all required PPE, including eye protection. Maintain proper spacing and overhead clearance. Be alert for stump holes and root cavities. Conduct thorough briefing for all personnel (inside rear cover IRPG). Minimize exposure to smoke, and rotate personnel.
ALL	<b>FATIGUE / HEAT / DEHYDRATION</b>	Be alert for signs of fatigue and take breaks as necessary. Monitor incoming resources for level of fatigue. Drink water before, during and after shifts, up to 1.5 gal. per shift. Be alert for signs of heat stress in yourself and others; use the buddy system. Eat small meals often and when possible.
ALL	<b>COVID 19</b>	Maintain 6' distance whenever possible. Utilize masks, frequent hand washing/sanitizing, disinfect common surfaces, follow Fresno County Public Health Guidelines. Monitor for symptoms, follow reporting procedure. Reference Safety folder from QR code on IAP.
ALL	<b>VALLEY FEVER</b>	Limit exposure to dust. Reference Safety folder from QR code on IAP. Monitor personnel for signs/symptoms.
ALL	<b>DOZER SAFETY</b>	Watch for rolling material. Monitor safe working distances. Avoid working below a Dozer. Utilize communication with the operator (radio or hand signals) Watch for signs indicating buried high-pressure gas lines <b>Stay out of the dust.</b>
ALL	<b>POWER LINES</b>	Follow <i>Power Line Safety</i> guidelines (IRPG) Communicate power line hazards to immediate supervisor. Flag area around downed power lines and deny access. Treat all downed power lines as energized.
ALL	<b>AIRCRAFT OPERATIONS</b>	Monitor air-to-ground frequency, they are your eyes in the sky. Use air-to-ground frequency to communicate with aircraft. Use clear, concise statements when directing aircraft.
ALL	<b>SERPENTINE SOILS (Asbestos)</b>	Limit exposure to dust. Maintain roads.
ALL	<b>LINE CONSTRUCTION</b>	Conduct thorough briefing for all personnel (inside rear cover IRPG). Ensure LCES in place prior to engagement (IRPG). Establish adequate safety zones (IRPG). Use Downhill Line Checklist (IRPG). Follow "Look Up, Look Down, Look Around" procedures (IRPG). Utilize Risk Management Process (IRPG).
Incident Name: <b>Mineral CA-FKU-010219</b> ICS 215a		DATE PREPARED: <b>July 18, 2020 1745hrs</b> Prepared by: Ryan Danielsen SOF1(T)
		OPERATIONAL PERIOD <b>07-19-2020 0700-0700</b>

# ASSIGNMENT LIST (ICS 204 WF)

CONTROLLED UNCLASSIFIED  
INFORMATION//BASIC

<b>1. Incident Name:</b> <p style="text-align: center; font-weight: bold;">Mineral</p>	<b>2. Operational Period:</b> Date From: 07/19/20      Date To: 07/20/20 Time From: 0700              Time To: 0700	<b>3. Branch</b> <b>Division</b> <p style="text-align: center; font-size: 2em; font-weight: bold;">I                      A/C</p>
---	---	--

Page 1 of 1

<b>4. Operations Personnel:</b> Operations Section Chief: <b>Chris Waters</b> Branch Director: <b>Joseph Felix</b> Division/Group Supervisor: <b>Von Mason / Steven Cabrera (T)</b>	Night Ops: <b>Nick Brown</b> Branch Safety: <b>Michael Zimmerman</b> Air Attack: <b>James Tully</b>
--	---

5. Resources Assigned:	** Resources Below in Bold are 12 Hour **							
Resource Identifier	ALS	LWD	Leader	Personnel	Request #	Hours	Reporting Location	
STC OES 4802C			David Baldwin	22	E-168	0700-0700	DP-5	
<b>STC CNF 6631C</b>			<b>Joel Mortier</b>	27	<b>E-165</b>	<b>0700-1900</b>	<b>DP-5</b>	
<b>CRW SQF 2</b>			<b>Arturo Zepeda</b>	20	<b>C-26</b>	<b>0700-1900</b>	<b>DP-5</b>	
<b>CRW SQF 4</b>			<b>Rogelio Ceballos</b>	19	<b>C-27</b>	<b>0700-1900</b>	<b>DP-5</b>	
W/T PVT E-43 GRINNELL			Peter Grinnell	2	E-43	0700-0700	DP-5	
FEMT BENNER			Nate Benner	1	O-201	0700-0700	DP-5	
FEMP HOWARD			Ryan Howard	1	O-228	0700-0700	DP-5	

**6. Work Assignments:**  
 Mop up 300 ft. in from control lines.  
 Improve and hold control lines.  
 Implement hose lays as needed to support firing operations.

**7. Special Instructions:**  
 Validate control lines.  
 Watch for stump holes and fire weakened trees.

8. Communications							
Name	Ch	Function	Rx Freq	Rx Tone	Tx Freq	Tx Tone	Notes
CDF C2	1	COMMAND	151.2650	103.5 (T8)	159.3300		TONES 7, 10, 14 OR 15
CDF T26	3	TACTICAL	159.2925	192.8 (T16)	159.2925	192.8 (T16)	
CDF T18	15	AIR TO GROUND	159.3450	192.8 (T16)	159.3450	192.8 (T16)	
CALCORD	13	MEDICAL	156.0750	156.7 (T6)	156.0750	156.7 (T6)	EMS COORDINATION
AIRGUARD	16	AIRGUARD	168.6250		168.6250	110.9 (T1)	

**9. Prepared by: Name:** Greg Padilla                      RESL  
 Signature:   
**ICS 204**                      Date/Time: 7/18/2020 2200                      Personnel Count: 92



# ASSIGNMENT LIST (ICS 204 WF)

CONTROLLED UNCLASSIFIED  
INFORMATION/BASIC

<b>1. Incident Name:</b> <p style="text-align: center;"><b>Mineral</b></p>	<b>2. Operational Period:</b> Date From: 07/19/20    Date To: 07/20/20 Time From: 0700    Time To: 0700	<b>3. Branch</b> <b>Division</b> <p style="text-align: center;"><b>I</b>                      <b>F</b></p> <p style="text-align: center;">Page 1 of 1              Foxtrot</p>
---	---	---

<b>4. Operations Personnel:</b>	
Operations Section Chief: <b>Chris Waters</b>	Night Ops: <b>Nick Brown</b>
Branch Director: <b>Joseph Felix</b>	Branch Safety: <b>Michael Zimmerman</b>
Division/Group Supervisor: <b>Matt Brown / Jeremiah Karlonas (T)</b>	Air Attack: <b>James Tully</b>

<b>5. Resources Assigned:</b>	<b>** Resources Below in Bold are 12 Hour **</b>						
Resource Identifier	ALS	LWD	Leader	Personnel	Request #	Hours	Reporting Location
STC SLU 9340C			Louis Ermigarat	16	E-18	0700-0700	DP-5
STC XCA 4050C			Cameron Todd	19	E-225	0700-0700	DP-5
<b>STC ENF 4600C</b>			<b>Bradley Stewart</b>	27	<b>E-164</b>	<b>0700-1900</b>	<b>DP-5</b>
T/F MINERAL 2			Gabriel Huck	20	E-9004	0700-0700	DP-5
STG FKU 9434G			Robert Fleming	34	C-1	0700-0700	DP-5
STG BEU 9464G			Juan Carlos Cabrera	34	C-3	0700-0700	DP-5
<b>CRW CRANE VALLEY IHC</b>			<b>Matthew Dunlap</b>	18	<b>C-5</b>	<b>0700-1900</b>	<b>DP-5</b>
STL TUU 9416L			Angelo Prandini	7	E-36	0700-0700	DP-5
<b>STL KRN 9360L</b>			<b>Michael Grisedale</b>	2	<b>E-16</b>	<b>0700-1900</b>	<b>DP-5</b>
W/T PVT E-11 A&CC			Crystal Avila	2	E-11	0700-0700	DP-5
W/T PVT E-13 A&G PUMPING			George Young	2	E-13	0700-0700	DP-5
W/T PVT E-42 TRAHAN			Nicholas Trahan	2	E-42	0700-0700	DP-5
W/T PVT E-45 WILBER			Cary Carson	2	E-45	0700-0700	DP-5
FEMP WILLIAMS			Dale Williams	1	O-230	0700-0700	DP-5
FEMP SMITH			Clayton Smith	1	O-314	0700-0700	DP-5

**6. Work Assignments:**  
Mop up 300 ft. in from control lines.  
Improve and hold established control lines.  
Implement hose lays as needed to support firing operations.  
Prepare indirect control lines for possible firing operations.

**7. Special Instructions:**  
Watch for stump holes and fire weakened trees.

<b>8. Communications</b>							
Name	Ch	Function	Rx Freq	Rx Tone	Tx Freq	Tx Tone	Notes
CDF C2	1	COMMAND	151.2650	103.5 (T8)	159.3300		TONES 7, 10, 14 OR 15
CDF T27	4	TACTICAL	159.3075	192.8 (T16)	159.3075	192.8 (T16)	
CDF T18	15	AIR TO GROUND	159.3450	192.8 (T16)	159.3450	192.8 (T16)	
CALCORD	13	MEDICAL	156.0750	156.7 (T6)	156.0750	156.7 (T6)	EMS COORDINATION
AIRGUARD	16	AIRGUARD	168.6250		168.6250	110.9 (T1)	

**9. Prepared by: Name:** Greg Padilla                      RESL  
Signature:   
**ICS 204**                      Date/Time: 7/18/2020    2200                      Personnel Count: 187

# ASSIGNMENT LIST (ICS 204 WF)

CONTROLLED UNCLASSIFIED  
INFORMATION//BASIC

<b>1. Incident Name:</b> <p style="text-align: center;"><b>Mineral</b></p>	<b>2. Operational Period:</b> Date From: 07/19/20      Date To: 07/20/20 Time From: 0700              Time To: 0700	<b>3. Branch</b> <b>Division</b> <p style="text-align: center;"><b>V</b>                                      <b>L</b></p> <p style="text-align: center;"><b>Page 1 of 1</b>                      <b>Lima</b></p>
---	---	--


<b>4. Operations Personnel:</b>	
Operations Section Chief: <b>Chris Waters</b>	Night Ops: <b>Nick Brown</b>
Branch Director: <b>M. Jonsson / D. Breshears (T)</b>	Branch Safety: <b>Tim Erwin</b>
Division/Group Supervisor: <b>Jed Skrobecky / Jeffrey Chase (T)</b>	Air Attack: <b>James Tully</b>

5. Resources Assigned:	** Resources Below in Bold are 12 Hour **						
Resource Identifier	ALS	LWD	Leader	Personnel	Request #	Hours	Reporting Location
STC BTU 9210C			Tony Brownell	16	E-227	0700-0700	DP10
STC BEU 9460C			Buddy Bloxham	19	E-170	0700-0700	DP10
STC XJS 4177C			Dave Ingram	19	E-169	0700-0700	DP10
STC XYO 4277C			David Stiles	17	E-224	0700-0700	DP10
STG SLU 9342G			Danny Richard	36	C-2	0700-0700	DP10
<b>CRW GROVELAND 4</b>			<b>Matt Thomas</b>	19	<b>C-28</b>	<b>0700-1900</b>	<b>DP10</b>
DOZ SLU 3442			Justin Little	2	E-10	0700-0700	DP10
DOZ PVT E-19 VARIAN			Greg Varian	2	E-19	0700-0700	DP10
W/T PVT E-14 BONESO			Derek Harms	2	E-14	0700-0700	DP10
W/T PVT E-44 RBI			Dale Evenson	2	E-44	0700-0700	DP10
W/T PVT E-47 FIRELINE TRK			Kelly Wicks	2	E-47	0700-0700	DP10
W/T PVT E-48 GASSAWAY			Steven Coon	2	E-48	0700-0700	DP10
W/T PVT E-49 GASSAWAY			Norm Gassaway	2	E-49	0700-0700	DP10
FEMP PETERS			Matt Peters	1	O-198	0700-0700	DP10
FEMP YOUNG			Kyle Young	1	O-199	0700-0700	DP10

**6. Work Assignments:**  
Mop up 100 ft. in from control lines.  
Hold fire within established control lines.  
Implement hose lays as needed to support firing operations.  
Prepare indirect control lines for possible firing operations.

**7. Special Instructions:**  
Watch for stump holes and fire weakened trees.

8. Communications							
Name	Ch	Function	Rx Freq	Rx Tone	Tx Freq	Tx Tone	Notes
CDF C2	1	COMMAND	151.2650	103.5 (T8)	159.3300		TONES 7, 10, 14 OR 15
CDF T28	5	TACTICAL	151.1825	192.8 (T16)	151.1825	192.8 (T16)	
CDF T18	15	AIR TO GROUND	159.3450	192.8 (T16)	159.3450	192.8 (T16)	
CALCORD	13	MEDICAL	156.0750	156.7 (T6)	156.0750	156.7 (T6)	EMS COORDINATION
AIRGUARD	16	AIRGUARD	168.6250		168.6250	110.9 (T1)	

**9. Prepared by: Name:** Greg Padilla                      RESL  
Signature:   
**ICS 204**                      Date/Time: 7/18/2020      2200                      Personnel Count: 142



# ASSIGNMENT LIST (ICS 204 WF)

CONTROLLED UNCLASSIFIED  
INFORMATION//BASIC

<b>1. Incident Name:</b> <p style="text-align: center;"><b>Mineral</b></p>	<b>2. Operational Period:</b> Date From: 07/19/20      Date To: 07/20/20 Time From: 0700              Time To: 0700	<b>3. Branch</b> <b>Division</b> <p style="text-align: center;"><b>V</b>                                  <b>M/Z</b></p>
<b>4. Operations Personnel:</b>		<b>Page 1 of 1</b>


Operations Section Chief: <b>Chris Waters</b>	Night Ops: <b>Nick Brown</b>
Branch Director: <b>M. Jonsson / D. Breshears (T)</b>	Branch Safety: <b>Tim Erwin</b>
Division/Group Supervisor: <b>Chris Martinelli / Jennifer Corning (T)</b>	Air Attack: <b>James Tully</b>

5. Resources Assigned:	** Resources Below in Bold are 12 Hour **						
Resource Identifier	ALS	LWD	Leader	Personnel	Request #	Hours	Reporting Location
STC TUU 9410C			Ryan Pack	19	E-17	0700-0700	DP15
<b>CRW CNA 43A</b>			<b>Ryan Katz</b>	18	<b>C-18</b>	<b>0700-1900</b>	<b>DP15</b>
<b>CRW CNA 43B</b>			<b>James Rauch</b>	21	<b>C-19</b>	<b>0700-1900</b>	<b>DP15</b>
W/T PVT E-12 JARDINE'S			Mike Jardine	2	E-12	0700-0700	DP15
W/T PVT E-46 FIRELINE TRK			Russ Hurl	2	E-46	0700-0700	DP15
FEMP POPE			Robert Pope	1	O-311	0700-0700	DP15
FEMP UNDERWOOD			Brett Underwood	1	O-313	0700-0700	DP15

**6. Work Assignments:**  
Mop up 200 ft. in from control lines.  
Pull hoselays where no longer required.  
Back haul trash and excess supplies.  
Perform Tactical Patrol.

**7. Special Instructions:**  
Validate control lines.  
Watch for stump holes and fire weakened trees.

8. Communications							
Name	Ch	Function	Rx Freq	Rx Tone	Tx Freq	Tx Tone	Notes
CDF C2	1	COMMAND	151.2650	103.5 (T8)	159.3300		TONES 7, 10, 14 OR 15
CDF T35	6	TACTICAL	159.3225	192.8 (T16)	159.3225	192.8 (T16)	
CDF T18	15	AIR TO GROUND	159.3450	192.8 (T16)	159.3450	192.8 (T16)	
CALCORD	13	MEDICAL	156.0750	156.7 (T6)	156.0750	156.7 (T6)	EMS COORDINATION
AIRGUARD	16	AIRGUARD	168.6250		168.6250	110.9 (T1)	

**9. Prepared by: Name:** Greg Padilla                      RESL  
Signature:   
**ICS 204**    Date/Time: 7/18/2020      2200                      Personnel Count: 64

# ASSIGNMENT LIST (ICS 204 WF)

CONTROLLED UNCLASSIFIED  
INFORMATION//BASIC

<b>1. Incident Name:</b> <p style="text-align: center;"><b>Mineral</b></p>	<b>2. Operational Period:</b> Date From: 07/19/20      Date To: 07/20/20 Time From: 0700              Time To: 0700	<b>3. Branch</b> <b>Division</b>  <b>Firing</b> <b>Firing Group</b>
<b>4. Operations Personnel:</b>		Page 1 of 1

Operations Section Chief: <b>Chris Waters</b>	Night Ops: <b>Nick Brown</b>
Branch Director: <b>Bill Lopez / Shawn Raley (T)</b>	Branch Safety: <b>Michael Camba / Freddrick Woods (T)</b>
Division/Group Supervisor: <b>Cole Periera</b>	Air Attack: <b>James Tully</b>

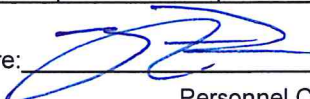
5. Resources Assigned:	** Resources Below in Bold are 12 Hour **						
Resource Identifier	ALS	LWD	Leader	Personnel	Request #	Hours	Reporting Location
STC TGU 9250C			Ethan Darnell	16	E-167	0700-0700	ICP
STC TGU 9251C			Gabriel Trull	16	E-228	0700-0700	ICP
STC TCU 9440C			B.J. Imlach	16	E-166	0700-0700	ICP
T/F MINERAL 3			Marc Bontrager	16	E-9006	0700-0700	ICP
CRW SBC 10			Tyler Gilliam	19	C-4	0700-0700	ICP
<b>CRW BEAR DIVIDE IHC</b>			<b>Brian Anderson</b>	19	<b>C-6</b>	<b>0700-1900</b>	<b>ICP</b>
<b>CRW KRN GOLDEN EMPIRE</b>			<b>Paddrik Young</b>	21	<b>C-24</b>	<b>0700-1900</b>	<b>ICP</b>
FEMP GRAY			Steven Gray	1	O-200	0700-0700	ICP
FEMT LESMEISTER			Tim Lesmeister	1	O-202	0700-0700	ICP

**6. Work Assignments:**  
 Prepare for firing and continue firing as needed. Protect infrastructure.  
 Prepare indirect control lines for possible firing operations.

**7. Special Instructions:**  
 Watch for stump holes and fire weakened trees.

**8. Communications**

Name	Ch	Function	Rx Freq	Rx Tone	Tx Freq	Tx Tone	Notes
CDF C2	1	COMMAND	151.2650	103.5 (T8)	159.3300		TONES 7, 10, 14 OR 15
NIFC T6	9	TACTICAL	166.7750		166.7750		FIRING (GROUND)
CDF T22	14	A/G FIRING	159.4050	192.8 (T16)	159.4050	192.8 (T16)	FIRING (AIR RESOURCES)
CALCORD	13	MEDICAL	156.0750	156.7 (T6)	156.0750	156.7 (T6)	EMS COORDINATION
AIRGUARD	16	AIRGUARD	168.6250		168.6250	110.9 (T1)	

**9. Prepared by: Name:** Greg Padilla                      RESL                      Signature: 

**ICS 204**                      Date/Time: 7/18/2020 2200                      Personnel Count: 125



# ASSIGNMENT LIST (ICS 204 WF)

CONTROLLED UNCLASSIFIED  
INFORMATION//BASIC

<b>1. Incident Name:</b> <p style="text-align: center;"><b>Mineral</b></p>	<b>2. Operational Period:</b> Date From: 07/19/20    Date To: 07/20/20 Time From: 0700        Time To: 0700	<b>3. Branch</b> <b>Division</b>  <p style="text-align: center;"><b>Cont.            North Dozer</b></p>
<b>4. Operations Personnel:</b>		Page 1 of 1

Operations Section Chief: <b>Chris Waters</b>	Night Ops: <b>Nick Brown</b>
Branch Director: <b>Craig Waag (12hr)</b>	Branch Safety:
Division/Group Supervisor: <b>Nick Ciapponi</b>	Air Attack: <b>James Tully</b>

5. Resources Assigned:	** Resources Below in Bold are 12 Hour **						
Resource Identifier	ALS	LWD	Leader	Personnel	Request #	Hours	Reporting Location
STL MMU 9428L			Keith Wolford	7	E-34	0700-0700	ICP
DOZ FKU 4340			Bernie Eaton	3	E-67	0700-0700	ICP
DOZ FKU 4341			Troy Holterman	3	E-69	0700-0700	ICP
DOZ FCO 43			Donny Roberts	2	E-65	0700-0700	ICP
DOZ KCF 9			Carl Lemos	2	E-55	0700-0700	ICP
DOZ PVT E-238			Kevin Fox	3	E-238	0700-0700	ICP
DOZ PVT E-239			Paul Lowry	3	E-239	0700-0700	ICP
DOZ PVT E-240			Mike Lenahan	3	E-240	0700-0700	ICP

**6. Work Assignments:**  
Prepare and construct secondary control lines.

**7. Special Instructions:**

8. Communications							
Name	Ch	Function	Rx Freq	Rx Tone	Tx Freq	Tx Tone	Notes
CDF C2	1	COMMAND	151.2650	103.5 (T8)	159.3300		TONES 7, 10, 14 OR 15
NIFC T5	8	TACTICAL	166.7250		166.7250		NORTH DOZER
CDF T18	15	AIR TO GROUND	159.3450	192.8 (T16)	159.3450	192.8 (T16)	
CALCORD	13	MEDICAL	156.0750	156.7 (T6)	156.0750	156.7 (T6)	EMS COORDINATION
AIRGUARD	16	AIRGUARD	168.6250		168.6250	110.9 (T1)	

<b>9. Prepared by: Name:</b>	Greg Padilla	RESL	Signature:
<b>ICS 204</b>	Date/Time: 7/18/2020	2200	Personnel Count: 26

# ASSIGNMENT LIST (ICS 204 WF)

CONTROLLED UNCLASSIFIED  
INFORMATION//BASIC

<b>1. Incident Name:</b> <p style="text-align: center;"><b>Mineral</b></p>	<b>2. Operational Period:</b> Date From: 07/19/20      Date To: 07/20/20 Time From: 0700              Time To: 0700	<b>3. Branch</b> <b>Division</b>  <p style="text-align: center;"><b>Cont.              West Dozer</b></p>
<b>4. Operations Personnel:</b>		Page 1 of 1

Operations Section Chief: <b>Chris Waters</b>	Night Ops: <b>Nick Brown</b>
Branch Director: <b>Craig Waag (12hr)</b>	Branch Safety:
Division/Group Supervisor: <b>D. Barnett / B. Martin (T)</b>	Air Attack: <b>James Tully</b>

5. Resources Assigned:	** Resources Below in Bold are 12 Hour **						
Resource Identifier	ALS	LWD	Leader	Personnel	Request #	Hours	Reporting Location
STL VNC 9323L			Ken VanWig	8	E-33	0700-0700	ICP
<b>DOZ STF 51</b>			<b>Kyle Crow</b>	3	<b>E-35</b>	<b>0700-1900</b>	<b>ICP</b>
DOZ PVT E-77 SMITH			Justin Smith	2	E-77	0700-0700	ICP
DOZ PVT E-78 DUSI			Michael Dusi	2	E-78	0700-0700	ICP
DOZ PVT E-80 DYE			Kevin Dye	2	E-80	0700-0700	ICP
DOZ PVT E-81 WILBER			Brad Dunn	2	E-81	0700-0700	ICP
DOZ PVT E-82 HENDRIX			Brent Hendrix	2	E-82	0700-0700	ICP
DOZ PVT E-236			Mark Miscar	2	E-236	0700-0700	ICP
DOZ PVT E-237			Chris Sherer	2	E-237	0700-0700	ICP
DOZ PVT E-241			Bruce Restad	3	E-241	0700-0700	ICP
HEQB HAM			Brian Ham	1	O-97	0700-0700	ICP

**6. Work Assignments:**  
Prepare and construct secondary control lines.

**7. Special Instructions:**

8. Communications							
Name	Ch	Function	Rx Freq	Rx Tone	Tx Freq	Tx Tone	Notes
CDF C2	1	COMMAND	151.2650	103.5 (T8)	159.3300		TONES 7, 10, 14 OR 15
CDF T36	7	TACTICAL	151.1525	192.8 (T16)	151.1525		WEST DOZER
CDF T18	15	AIR TO GROUND	159.3450	192.8 (T16)	159.3450	192.8 (T16)	
CALCORD	13	MEDICAL	156.0750	156.7 (T6)	156.0750	156.7 (T6)	EMS COORDINATION
AIRGUARD	16	AIRGUARD	168.6250		168.6250	110.9 (T1)	

<b>9. Prepared by: Name:</b>	Greg Padilla	RESL	Signature:
<b>ICS 204</b>	Date/Time: 7/18/2020	2200	Personnel Count: 29



# ASSIGNMENT LIST (ICS 204 WF)

CONTROLLED UNCLASSIFIED  
INFORMATION//BASIC

<b>1. Incident Name:</b> <p style="text-align: center;"><b>Mineral</b></p>	<b>2. Operational Period:</b> Date From: 07/19/20      Date To: 07/20/20 Time From: 0700              Time To: 0700	<b>3. Branch</b> <b>Division</b> <p style="text-align: center;"><b>Cont.</b>                      <b>Roads</b></p>
<b>4. Operations Personnel:</b>		Page 1 of 1

Operations Section Chief: <b>Chris Waters</b>	Night Ops: <b>Nick Brown</b>
Branch Director: <b>Craig Waag (12hr)</b>	Branch Safety:
Division/Group Supervisor: <b>John Garza</b>	Air Attack: <b>James Tully</b>

5. Resources Assigned:	** Resources Below in Bold are 12 Hour **						
Resource Identifier	ALS	LWD	Leader	Personnel	Request #	Hours	Reporting Location
W/T PVT E-171			<b>Keith Curry</b>	2	E-171	0700-0700	ICP
W/T PVT E-173			<b>Allan Wharff</b>	1	<b>E-173</b>	<b>0700-1900</b>	<b>ICP</b>
W/T PVT E-174 VALLEY			<b>Dutch Scholten</b>	1	<b>E-174</b>	<b>0700-1900</b>	<b>ICP</b>
W/T PVT E-187 J&M			Dave Brown	3	E-187	0700-0700	ICP
W/T PVT E-248 RAINBOW			<b>Anastasos Taso</b>	1	<b>E-248</b>	<b>0700-1900</b>	<b>ICP</b>
GRD PVT E-178 MUSTIN			<b>Rick Mustin</b>	1	<b>E-178</b>	<b>0700-1900</b>	<b>ICP</b>
GRD PVT E-179 CARLTON			<b>Carlton Cooper</b>	1	<b>E-179</b>	<b>0700-1900</b>	<b>ICP</b>

**6. Work Assignments:**

**7. Special Instructions:**

8. Communications							
Name	Ch	Function	Rx Freq	Rx Tone	Tx Freq	Tx Tone	Notes
CDF C2	1	COMMAND	151.2650	103.5 (T8)	159.3300		TONES 7, 10, 14 OR 15
NIFC T7	10	TACTICAL	168.2500		168.2500		ROADS GROUP
CDF T18	15	AIR TO GROUND	159.3450	192.8 (T16)	159.3450	192.8 (T16)	
CALCORD	13	MEDICAL	156.0750	156.7 (T6)	156.0750	156.7 (T6)	EMS COORDINATION
AIRGUARD	16	AIRGUARD	168.6250		168.6250	110.9 (T1)	

<b>9. Prepared by: Name:</b>	Greg Padilla	RESL	Signature:
<b>ICS 204</b>	Date/Time: 7/18/2020	2200	Personnel Count: 10





## AIR OPERATIONS SUMMARY ICS-220

<b>Incident Name / Number</b> Mineral / CA-FKU-010219	<b>Sunrise</b> 559	<b>Startup</b> 629	<b>Cutoff</b> 1947	<b>Sunset</b> 2017	<b>Time Prepared</b> 1500 <b>Shutdown</b> 2047	<b>Date Prepared</b> Saturday, July 18, 2020 <b>Operational Period - Date</b> Sunday July 19, 2020	<b>Prepared By</b> Matt Hill
<b>General Remarks, Safety Notes, Hazards, Air Operations Special Equipment, etc.</b> TRACK ALL DIPSITE LOCATIONS / NUMBER OF DIPS / GALLONS TAKEN. TRACK ALL DROP LOCATIONS / NUMBER OF DROPS / GALLONS DROPPED ALL GPS DATA TO BE COLLECTED IN DEGREES, MINUTES, DECIMAL MINUTES, FORMAT. AVOID Aerial Application of Retardant / Foam / Agent within 300' of Waterways, Bodies of Water, etc. If Retardant / Foam / Agent is Dropped Within These Areas Immediately Notify the AOB and Provide the Following Information: Lat / Long, Estimated Number of Gallons and a Map Detailing The Area.							
Your Sunrise and Sunset info has not been updated for the current Op period <span style="float: right;">Update</span>							

FAA #	Type	Make/Model	Helibase	Avail	Start	Remarks/A#	FAA #	Type	Make/Model	Helibase	Avail	Start	Remarks
N191SG	3	Bell 206B	Coalinga	0700	0800	Recon A-48	N721HT	1	CH-54B	Coalinga	0700	0800	Tank/A-6
N242BH	3	Bell 206L-1	Coalinga	0700	0800	HLCO A-49	N51BH	1	HH-60L	Coalinga	0700	0800	Bucket/A-37
N4TV	3	AS 350 B2	Coalinga	0700	0800	HLCO A-50	N82BH	1	UH-60A	Coalinga	0700	0800	Bucket/A-38
507	1	Bell 209 Cobra	Coalinga	0700	0800	HLCO A-53	N135BH	1	S70A-27	Coalinga	0700	0800	Bucket/A-39
527	2	205A-1	Coalinga	0700	0800	Standard/Bucket A-5	N4035S	1	S-64E	Coalinga	0700	0800	Tank/A-40
N212AH	2	Bell 212	Coalinga	0700	0800	Standard/Bucket A-35	N401AJ	1	CH-47D	Coalinga	0700	0800	Bucket/A-66
N370FG	2	Bell 205	Coalinga	0700	0800	Restricted/Bucket A-36	N9696W	1	S-61A	Coalinga	0700	0800	Tank/A-67
406	2	UH1H	Coalinga	0700	0800	Firing A-105	N70K	1	UH-60A	Coalinga	0700	0800	Bucket/A-80
							N13FH	1	Firehawk	Coalinga	0700	0800	Bucket/A-81
							N625CK	1	S-61N	Coalinga	0700	0800	Tank/A-82
							N161KA	1	KMAX	Coalinga	0700	0800	Bucket/A-83

### HELICOPTERS ( Use page 2 if Needed )

FAA #	Type	Make/Model	Helibase	Avail	Start	Remarks/A#	FAA #	Type	Make/Model	Helibase	Avail	Start	Remarks

### FIXED WING ( Use Page 2 if Needed )

FAA #	Type	Make/Model	Base	Avail	Start	Remarks	FAA #	Type	Make/Model	Base	Avail	Start	Remarks

<b>Request #</b> A-78	<b>Name</b> G840	<b>Phone</b> (925) 325-4158	<b>Make/Model</b> UH-60	<b>Location</b> Coalinga	<b>Rescue Ship Information</b> Name: G840 Phone: (925) 325-4158 Make/Model: UH-60 Location: Coalinga Request Procedure For These Aircraft: Contact Incident Communications See Medical Plan For Additional Info
<b>TFR Information</b> Request # A-78 Radius: 12 NM Altitude: 8,000 MSL Centerpoint: 36° 08.10' Lat 120° 32.40' Long NOTAMS: 0/0/156 Frequency: 133.0250 <a href="http://tfr.faa.gov/tfr2/list.html">http://tfr.faa.gov/tfr2/list.html</a>					
<b>Heilibase Information</b> Name: Coalinga Latitude: 36° 09.57 Longitude: 120° 74.95 Unicom: 122.7 Name: _____ Latitude: _____ Longitude: _____					
<b>Position</b> Name: Matt Hill AOB: (530) 708-2707 ASGS: (530) 520-8651 HEBM: (858) 353-6261 ATGS: (805) 903-3408 HLCO: (530) 925-0934 HLCO: (530) 708-2712 HLCO: (530) 941-4600					
<b>Trainee</b> Name: Chance Inwood Phone: (209) 694-5333 Name: Phil Michaels Phone: (916) 221-2071 Name: Mike Reimer Phone: (559) 970-1745 Name: Steve Martin Phone: (530) 409-7710					

## MEDICAL PLAN (ICS 206)

<b>1. Incident Name:</b>	<b>2. Operational Period:</b>	Date From:	7/19/20	Date To:	7/20/20
Mineral		Time From:	0700	Time To:	0700

3. Medical Aid Stations:			
Name	Location	Contact Number/Freq	Paramedics
CAL MAT (24 HR Treatment & Supplies)	NW Corner of ICP	831-295-3184	Yes
MERT	West Behind Trailer Row	209-642-2209	Yes

4. Transportation (indicate air or ground):			
Ambulance Service	Location	Contact Number	Level of Service
Atascadero Fire Ambulance 4x4	DP 15	Mineral Communications	ALS
Guard 840 (24/7 Medevac)	Coalinga Airport	Mineral Communications	ALS
Coalinga Fire	300 W. Elm Ave, Coalinga CA. 93210	559-935-1652	ALS
American Ambulance	2911 E Tulare St, Fresno CA. 93721	559-600-7800	ALS
Skylife Air Ambulance	5526 E. Air Corp Way, Fresno CA. 93721	800-305-5433	ALS

5. Hospitals:								
Hospital Name	Address,		Contact Number(s)/ Frequency	Travel Time		Trauma Center	Burn Center	Helipad
	Lat & Long	Helipad		Air	Ground			
Adventist Medical Center	115 Mall Dr, Hanford CA. 93230		(559) 582-9000	20	50	Level 3	<input type="checkbox"/>	<input checked="" type="checkbox"/>
Community RMC	2823 Fresno St. Fresno CA. 93721		(559) 459-7427	30	70	Level 1	<input checked="" type="checkbox"/>	<input checked="" type="checkbox"/>
Saint Agnes	1303 E Herndon Ave, Fresno CA. 93721		(559) 450-3000	35	80	Level 3	<input type="checkbox"/>	<input checked="" type="checkbox"/>
						Level	<input type="checkbox"/>	<input type="checkbox"/>
							<input type="checkbox"/>	<input type="checkbox"/>

6. Special Medical Emergency Procedures	
<p><b>Line Emergency</b> Crew Supervisor will contact Division Supervisor with patient complaint/condition and location.</p> <p>- Division Group Supervisor Contacts:</p> <ol style="list-style-type: none"> <li>1. Closest EMS resource</li> <li>2. Communications Unit</li> </ol> <p>- Communications Unit Contacts:</p> <ol style="list-style-type: none"> <li>1. Ground or Air ambulance as requested.</li> <li>2. Operations</li> <li>3. Safety</li> <li>4. Medical Unit</li> </ol> <p>- Division Supervisor or designee will serve as point of contact and run medical emergency on assigned channel.</p> <ol style="list-style-type: none"> <li>1. A pre-assigned tactical frequency (i.e. CALCORD) should be used for IWI and only for duration of the emergency.</li> </ol> <p>- Communications Unit will clear the Command channel for emergency traffic as needed for duration of the need.</p> <p><b>Camp Emergency</b> Contact Medical Unit with patient complaint/condition and location. Medical staff will respond to stabilize the patient.</p> <p>- Medical Unit contacts</p> <ol style="list-style-type: none"> <li>1. Communications</li> <li>2. Safety</li> <li>3. Logistics</li> <li>4. Operations</li> <li>5. Crew Supervisor</li> <li>6. Comp/Claims</li> </ol>	<p><b>Injury Reporting Procedures</b></p> <p><b>Nature of Injury:</b> _____</p> <p><b>Location of Patient:</b> _____</p> <p><b>Point of Contact:</b> _____</p> <p><b>Transportation Requested by:</b> Air ___ Ground ___</p> <p><b>Point of Pick-Up:</b> _____</p> <p style="padding-left: 40px;"><b>Lat:</b> _____ <b>Long:</b> _____</p> <p><b>Patient Unit ID:</b> _____</p> <p><b>Is an EMT with Patient:</b> Yes _____ No _____</p> <p><b>Age:</b> _____ <b>Sex:</b> Male _____ Female _____</p> <p><b>All Emergencies - Secure the area and identified witnesses for later investigation. Keep accurate log of events.</b></p>

Check box if aviation assets are utilized for rescue. If assets are used, coordinate with Air Operations.

<b>7. Prepared by (Medical Unit Leader):</b>	Justin Vanderhulst	Signature:
<b>8. Approved by (Safety Officer):</b>	Chad Thompson / Ryan Danielsen (T)	Signature:
ICS 206	NIMS IAP	Date/Time: 7-18-20 1800



# ICS 205 - INCIDENT RADIO COMMUNICATIONS PLAN

CONTROLLED UNCLASSIFIED  
INFORMATION/BASIC

<b>1. Incident Name:</b> Mineral Incident Channels	<b>2. Date/Time Prepared</b> Date: 07/18/2020 Time: 2000	<b>3. Operational Period:</b> Date From: 07/19/20 Time From: 0700 Date To: 07/20/20 Time To: 0700
--	--	---

Ch#	Function	Name	Assigned To	Rx Freq	Rx Tone	Tx Freq	Tx Tone	Notes
1	COMMAND	CDF C2	INCIDENT WIDE	151.2650	103.5 (T8)	159.3300		TONES 7, 10, 14 OR 15
2								
3	TACTICAL	CDF T26	BRANCH I DIV A/C	159.2925	192.8 (T16)	159.2925	192.8 (T16)	
4	TACTICAL	CDF T27	BRANCH I DIV F	159.3075	192.8 (T16)	159.3075	192.8 (T16)	
5	TACTICAL	CDF T28	BRANCH V DIV L	151.1825	192.8 (T16)	151.1825	192.8 (T16)	
6	TACTICAL	CDF T35	BRANCH V DIV M/Z	159.3225	192.8 (T16)	159.3225	192.8 (T16)	
7	TACTICAL	CDF T36	CONTINGENCY GROUP	151.1525	192.8 (T16)	151.1525		WEST DOZER
8	TACTICAL	NIFC T5	CONTINGENCY GROUP	166.7250		166.7250		NORTH DOZER
9	TACTICAL	NIFC T6	FIRING GROUP	166.7750		166.7750		FIRING (GROUND)
10	TACTICAL	NIFC T7	CONTINGENCY GROUP	168.2500		168.2500		ROADS GROUP
11	TACTICAL	VFIRE 25	FIRE SUPP REPAIR	154.2875	156.7 (T6)	154.2875	156.7 (T6)	
12								
13	MEDICAL	CALCORD	ALL DIVS	156.0750	156.7 (T6)	156.0750	156.7 (T6)	EMS COORDINATION
14	A/G FIRING	CDF T22	FIRING GROUP	159.4050	192.8 (T16)	159.4050	192.8 (T16)	FIRING (AIR RESOURCES)
15	AIR TO GROUND	CDF T18	ALL DIVS	159.3450	192.8 (T16)	159.3450	192.8 (T16)	
16	AIRGUARD	AIRGUARD	ALL DIVS	168.6250		168.6250	110.9 (T1)	
17								
18								
19								
20	AIRGUARD	AIRGUARD	ALL DIVS	168.6250		168.6250	110.9 (T1)	

**5. Special Instructions**

6. Prepared by (Communications Unit Leader): Name: JOHN MCCORMICK, COM1(T) ICS 205 - CONTROLLED UNCLASSIFIED INFORMATION/BASIC	Signature:  Date/Time: 07/18/20 2000
---	---

# FIRING OPERATION CHECKLIST

Location: \_\_\_\_\_

Date: \_\_\_\_\_ Time: \_\_\_\_\_

Firing Supervisor \_\_\_\_\_

## 1. Personnel Briefing

- Objectives
- Conditions (fire environment)
- Resource assignments identified
  - Firing personnel
  - Holding forces
  - Lookouts
- Ignition plan/sequence
- Communication Plan
- Contingency Plan
- Safety issues

## 2. Go / No-Go

- All personnel briefed
- Weather forecast reviewed
- Resources in place
- Lookouts posted as needed
- Anchor and termination firing points identified
- Communications systems in place
- Fire behavior forecast reviewed
- Escape routes and safety zones established and made known
- Adjoining forces/Air Attack notified

## 3. Approval Prior To Firing

- Division Supervisor
- Branch Director
- Operations

## 4. Other Notifications

- Other: \_\_\_\_\_
- Other: \_\_\_\_\_

Attach Firing Operations Checklist to ICS-214



# "Mineral" Incident Fire Suppression Repair Plan

## I. Objectives

The objective of the Suppression Repair Plan is to mitigate possible adverse effects to resources resulting from fire suppression activities on the Mineral Fire in a manner which does not compromise firefighter safety. The mitigations described within this plan have been developed to apply to constructed fire lines, watercourse crossings, access roads, drop points, heli-spots and any other locations disturbed by fire suppression activities. A Repair Specialist will be assigned to ensure that work is done as required and according to the Emergency Fire Suppression Repair Plan. Additional specialists or equipment may be used if the need arises. Specialists will release equipment from the area when their work is completed.

## II. General Repair Guidelines

### A. Helispots/Staging Areas/Safety Zones

- 1) Re-contour to the original slope as requested by the Repair Specialist.
- 2) Remove soil, and/or breach berms so that runoff can be dissipated. Cross drain these areas to effectively dissipate water runoff.
- 3) Place disturbed vegetation, brush and trees, piled during line construction, on the surface of safety zones and open areas. This may be done with equipment or hand crews.

### B. Roads

- 1) Re-establish existing berms where applicable.
- 2) Breach berms to facilitate drainage, where applicable.
- 3) Clean culverts plugged with soil and rock resulting from fire suppression activities.
- 4) Blading or grading of roads may be necessary.

### C. Firelines; Hand and Dozer

Install waterbars **as needed**. Waterbars are designed to intercept, slow and spread the precipitation run-off in order to reduce sediment transport and soil erosion. The idea is to move water off the fireline before it can build up enough energy to erode and transport sediment. Re-establish waterbars and rolling dips using pre-fire locations. Flatten berms along fire lines to match natural contours. Utilize cut vegetation for erosion control on steep dozer and hand lines.

<b>Water Bar or cross drain spacing</b>				
Fireline or Road Gradient (%)	0-10%	11-25%	26-50%	>50%
Spacing	200'	150'	100'	75'

### D. Watercourses

- 1) Watercourse crossings shall be dipped to original configuration. Waterbreaks shall be installed on each side of channel to divert flow off of trails prior to entering watercourse channel.
- 2) Remove all soil and debris that was placed in any stream channel. A Repair Specialist will review the site for acceptability. If all foreign material cannot be removed with heavy equipment, the material shall be removed by hand. The approaches to the crossing may be sloped back to prevent future stream bank failure.

### E. Other Repair Concerns

- 1) Remove all trash from fire lines and other affected areas.
- 2) Repair, broken, damaged fences, and/or gates damaged as the result of the fire control operations will be repaired. (Note: Extent and condition of damage should be documented prior to repairs.)

Prepared by:

**Lucas Titus, Fire Suppression Repair Lead**

# ***TRAINING SPECIALIST MESSAGE***

**A Training Specialist is now on the incident.**

## ***ALL ASSIGNED TRAINEES***

**working on position task books will need to register with the Incident Training Specialist in order to receive proper credit for your assignment.**

**The Training Specialist is available immediately following the morning Operations Briefing.**

## **TRAINING SPECIALIST**

**Claudia Soiza  
Cell-(949)632-7813**





**Incident Trainee/Trainer Data Form  
Mineral Incident CA-FKU-010219**

Training Specialist: Claudia Soiza      949.632.7813

- All Incident trainees, including those on Firefighting Modules at your earliest opportunity complete this form and see the Training Specialist.
- Prior to or as you process through DEMOB, remember to close your training package. To close your training package, bring: 1) A performance rating from your trainer. (ICS 225)  
2) Your task book that has as many entries as possible by your Trainer.

**Trainee Data**

Trainee Name: \_\_\_\_\_ ICS Trainee Position: \_\_\_\_\_

Request # (A,C,E, or O): \_\_\_\_\_ Agency Designator ( Ex. CA-RRU): \_\_\_\_\_

Ordered as Trainee? Y N      Priority Trainee \_\_\_ Local Forest Trainee \_\_\_ IMT Trainee

Date Assigned: \_\_\_\_\_ Cell / Contact # While on Incident: \_\_\_\_\_

---

**Training Records Mailed To: (Fire Chief, Training Officer):**

Name: \_\_\_\_\_ Title \_\_\_\_\_

Name of Agency/Unit: \_\_\_\_\_

Agency/Unit Address: \_\_\_\_\_

City: \_\_\_\_\_ State: \_\_\_\_\_ Zip Code: \_\_\_\_\_ Phone: \_\_\_\_\_

---

**Trainee Prerequisites**

1. Possesses valid Qualification Card or agency certification card?      \_\_\_ Yes \_\_\_ No

2. Trainee has current position task book issued by home unit?      \_\_\_ Yes \_\_\_ No

Current Task Book Progress (Circle)    0%    25%    50%    75%    90%

Priority Open Task in PTB (What do you need to accomplish on this incident?)

---

**Trainer/Evaluator Data**

Trainer / Evaluator Name: \_\_\_\_\_ ICS position on fire: \_\_\_\_\_

Home Unit: \_\_\_\_\_ Agency Designator (Ex CA-RRU): \_\_\_\_\_

Request # (A,C,E,O): \_\_\_\_\_

Work Address: \_\_\_\_\_

City: \_\_\_\_\_ State: \_\_\_\_\_ Zip Code: \_\_\_\_\_

Cell / Contact While on Incident: \_\_\_\_\_

## MINERAL FINANCE MESSAGE

- Check in with the TIME unit
- Suppliers check list and report to TIME unit
- DIVS are responsible for completing hired equipment shift tickets every day. See Shift Ticket example
- Off-site feeding:  
Those staying in Tachi Palace Casino –  
Order food to go at Tachi Restaurant  
Sign AO-341.
- Use of CAL CARD is authorized if lodging in Hanford, Lemoore, or Kettleman City.

Finance Contacts	
FSC1 – Chuck Carroll 408-472-1612	COMP – Cesar Nerey 925-407-6363
TIME – Micah McConnell 530-635-7269	PROC – Josh Shifrin 310-487-9145



**12HR LINE RESOURCE – 1 OPERATOR**

EMERGENCY SHIFT TICKET and EVALUATION FORM The responsible Government Officer will complete this form each shift.					Contractor Name <b>THE BEST DOZERS LLC</b>			
Incident or Project Name <b>MINERAL</b>		Incident Number <b>CAFKU010219</b>		Request Number <b>E-555</b>		Operator #1 <b>FIRST &amp; LAST</b>	Operator #2 <b>-</b>	
Agreement Number <b>MMU-0000015955</b>					Operator Furnished By: <input checked="" type="checkbox"/> Contractor <input type="checkbox"/> Government			
Equipment Make <b>2004 CAT</b>			Equipment Model / Type <b>D6N / TYPE II E</b>			Operating Supplies Furnished By: <input checked="" type="checkbox"/> Contractor <input type="checkbox"/> Government		
Serial Number <b>COMPLETE VIN#</b>			License Number <b>-</b>			Equipment Status Inspected <input type="checkbox"/> Under Agreement <input checked="" type="checkbox"/>		
Equipment Use (Circle) <b>Hours</b> Days / Miles					Released by Government <input type="checkbox"/>		Withdrawn by Contractor <input type="checkbox"/>	
Date Mo / Day	Start	Stop	Work	Assignment				Remarks/Comments** <b>1 OPERATOR</b> <b>NO DAMAGE / NO CLAIM</b>
<b>7/17</b>	<b>0001</b>	<b>0700</b>	<b>7</b>	<b>OFF SHIFT</b>				
<b>7/17</b>	<b>0701</b>	<b>1900</b>	<b>12</b>	<b>DIV X</b>				
<b>7/17</b>	<b>1901</b>	<b>2400</b>	<b>5</b>	<b>OFF SHIFT</b>				
Vendor Rating					Govt. Rep. Name and Position – PRINT			
Poor* Avg. Good Exc. N/A					<b>Print Your Name</b>			
Met Performance Expectations					Govt. Rep. Signature			
Equipment in Safe Working Condition					<i>Your Signature</i>			
Operator Skill Level					Contractor Signature			
Operates Safely					<i>John Smith</i>			
Operator's Cooperation Level					Date		Time	
Overall Performance					<b>7/17/2020</b>		<b>1900</b>	
* NOTE: any rating of POOR requires an explanation in Comment Section. ** Final evaluation or for more documentation, use a CALFIRE Form 230 or equivalent.							CAL FIRE 297 (Rev 3-2011)	

**24HR LINE RESOURCE – 2 OPERATOR**

EMERGENCY SHIFT TICKET and EVALUATION FORM The responsible Government Officer will complete this form each shift.					Contractor Name <b>THE BEST DOZERS LLC</b>			
Incident or Project Name <b>MINERAL</b>		Incident Number <b>CAFKU010219</b>		Request Number <b>E-444</b>		Operator #1 <b>FIRST &amp; LAST</b>	Operator #2 <b>FIRST &amp; LAST</b>	
Agreement Number <b>MMU-0000015953</b>					Operator Furnished By: <input checked="" type="checkbox"/> Contractor <input type="checkbox"/> Government			
Equipment Make <b>1999 PETERBILT 379</b>			Equipment Model / Type <b>TRANSPORT 18 WHEEL</b>			Operating Supplies Furnished By: <input checked="" type="checkbox"/> Contractor <input type="checkbox"/> Government		
Serial Number <b>COMPLETE VIN#</b>			License Number <b>12345A1</b>			Equipment Status Inspected <input type="checkbox"/> Under Agreement <input checked="" type="checkbox"/>		
Equipment Use (Circle) <b>Hours</b> Days / Miles					Released by Government <input type="checkbox"/>		Withdrawn by Contractor <input type="checkbox"/>	
Date Mo / Day	Start	Stop	Work	Assignment				Remarks/Comments** <b>2 OPERATORS</b> <b>NO DAMAGE / NO CLAIM</b>
<b>7/17</b>	<b>0701</b>	<b>2400</b>	<b>17</b>	<b>DIV X</b>				
<b>7/18</b>	<b>0001</b>	<b>0700</b>	<b>7</b>	<b>DIV X</b>				
Vendor Rating					Govt. Rep. Name and Position – PRINT			
Poor* Avg. Good Exc. N/A					<b>Print Your Name</b>			
Met Performance Expectations					Govt. Rep. Signature			
Equipment in Safe Working Condition					<i>Your Signature</i>			
Operator Skill Level					Contractor Signature			
Operates Safely					<i>John Smith</i>			
Operator's Cooperation Level					Date		Time	
Overall Performance					<b>7/18/2020</b>		<b>0700</b>	
* NOTE: any rating of POOR requires an explanation in Comment Section. ** Final evaluation or for more documentation, use a CALFIRE Form 230 or equivalent.							CAL FIRE 297 (Rev 3-2011)	



# MINERAL PUBLIC INFORMATION



Incident Information Line: 559-961-7102

Email pictures to: [mineralfire2020@gmail.com](mailto:mineralfire2020@gmail.com)

## MEDIA

California State Penal Code Section 409.5(d) allows the news media to enter scenes of disaster, riot, or civil disturbance. Properly identified members of the news media should not be restricted from entering the locations specified within the code, even if the area presents a danger to them. Media members should be advised of the nature of possible danger. Members of the media do not have the right to access crime scenes or any area where their presence may interfere with incident operations, mitigation or evidence collection.

- The media may only access private property with the property owner's permission. Fire personnel cannot provide members of the media with authorization to enter private property.
- If approached and questioned by the media and/or the public, talk about your assignment or task at hand. If need be, direct the questioning party to the incident PIO.
- Do not speculate or give opinions
- There is no such thing as an "off the record" comment.

## CAL FIRE SOCIAL MEDIA POLICY (Social Media 0691)

Social Media is increasingly being used by public agencies and the media as well as the public. This form of communication continues to grow rapidly in order to supply the public's desire for instant information gratification. All personnel assigned to a CAL FIRE incident will adhere to the CAL FIRE Social Media Policy. Further information about the CAL FIRE Social Media Policy can be obtained from the Information Officer. If you are uncertain, please ask. **Do not post:**

- Inappropriate information, pictures or videos
- Opinions regarding the incident or policy
- Endorsements of any kind

## PICTURES AND VIDEO OF INCIDENT

We are in a new era of media. Media no longer means the news/broadcast industry but now refers to anyone that has the capability to shoot video and or photographs and post them onto social media in a matter of minutes. Unfortunately we have seen some instances of video or photographs that have depicted unsafe, unprofessional or embarrassing circumstances which are a serious breach of ethics. When this happens it reflects poorly on all that are attached to this incident. Posting an inappropriate video, photo or blog comment could have unwanted effects. It may be unsafe to shoot photos or video and a firefighter who is concentrating on a camera can't be looking up, down and all around.

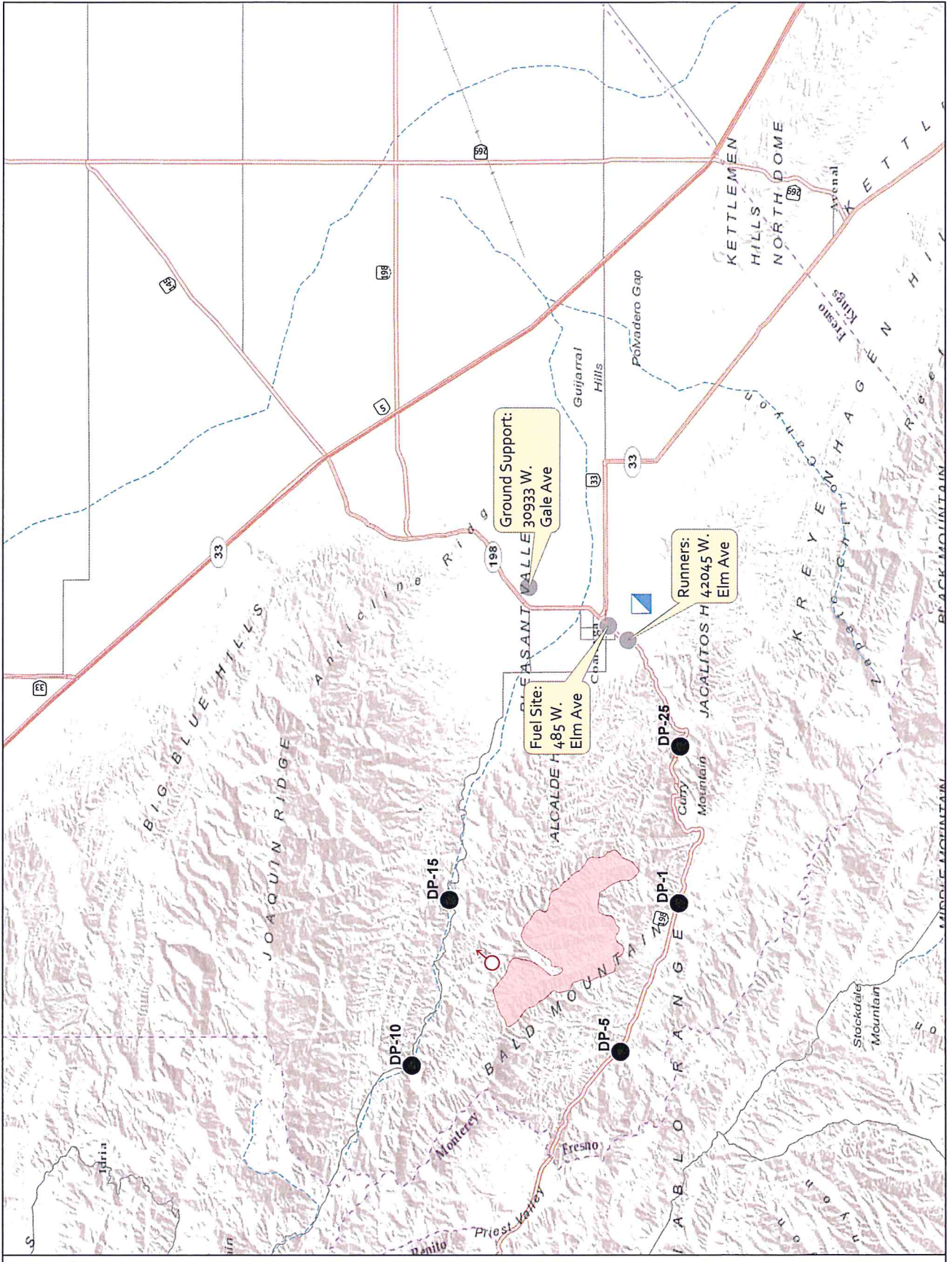
## LOST AND FOUND

The Information staff will manage *Lost and Found* items for the incident. If you have lost an item, leave your contact information and what you have lost at the Information trailer. If you have found an item on the incident, bring the item to the Information trailer.

## MAIL SERVICE

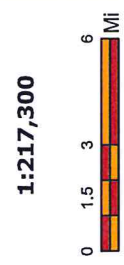
The Information staff will assist you in mailing and receiving letters and packages.



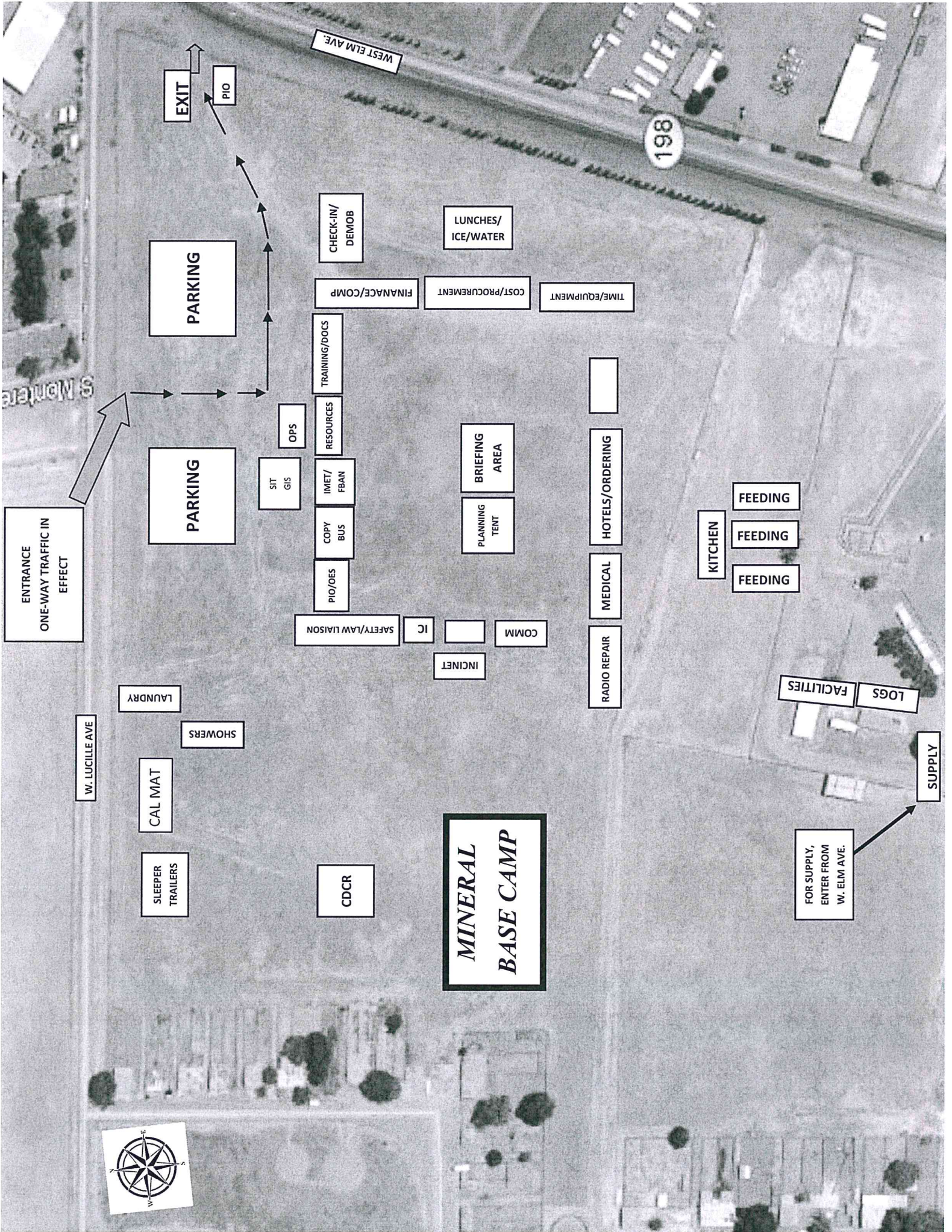


**Ground Support**  
**Map**  
**Mineral Incident**  
**CA-FKU-010219**  
**NAD 83**

- Drop Point
- ◻ ICP
- ♂ Spot Fire
- Ground Support
- ▭ Fire Perimeter







EXIT  
PIO

PARKING

PARKING

ENTRANCE  
ONE-WAY TRAFFIC IN  
EFFECT

WEST ELM AVE.

198

CHECK-IN/  
DEMOB

LUNCHES/  
ICE/WATER

FINANCE/COMP

COST/PROCUREMENT

TIME/EQUIPMENT

TRAINING/DOCS

RESOURCES

OPS

SIT  
GIS

IMET/  
FBAN

COPY  
BUS

PIO/OES

SAFETY/LAW LIAISON

IC

INCLINET

COMM

BRIEFING  
AREA

PLANNING  
TENT

HOTELS/ORDERING

MEDICAL

RADIO REPAIR

KITCHEN

FEEDING

FEEDING

FEEDING

FACILITIES

LOGS

SUPPLY

FOR SUPPLY,  
ENTER FROM  
W. ELM AVE.



**MINERAL  
BASE CAMP**

CDCR

SLEEPER  
TRAILERS

CAL MAT

SHOWERS

LAUNDRY

W. LUCILLE AVE





# COVID-19

## PROTECT YOURSELF AND OTHERS

### Know How it Spreads

- The best way to prevent illness is to avoid being exposed to this virus.
- The virus is spread:
  - ✓ between people who are in **close contact** with each other.
  - ✓ through respiratory droplets produced when an infected person coughs, sneezes or talks. **Breathing in the** droplets or getting them on your hands and then transferring them into your mouth, nose or eyes will infect you with the virus.

### Know how to Protect Yourself and Others

- **Cover your mouth and nose** with a cloth face cover when around others.  
A face cover is **not** a substitute for social distancing.
- **Wash your hands often with soap and water.**  
If soap and water are not readily available, **use a hand sanitizer that contains at least 60% alcohol.**
- **Avoid touching your eyes, nose, and mouth.**
- **Avoid close contact**  
As much as possible, maintain 6 feet of distance between yourself and others.
- **Cover coughs and sneezes** – keep your fluids to yourself!

### Clean and Disinfect

- Clean AND disinfect frequently touched surfaces often.

### Monitor Your Health Daily

- Be alert for symptoms:
  - **Fever, cough, difficulty breathing, headache, sore throat, etc.**
- Advise your supervisor as soon as you start having symptoms.

*Promotion, preservation and protection of the community's health*

1221 Fulton Street / P. O. Box 11867, Fresno, CA 93775

(559) 600-3357 ☐ FAX (559) 600-7629

The County of Fresno is an Equal Employment Opportunity Employer

[www.co.fresno.ca.us](http://www.co.fresno.ca.us) ☐ [www.fcdph.org](http://www.fcdph.org)



## CAL FIRE / IMT 2

### COVID-19 EMPLOYEE DAILY SCREENING QUESTIONNAIRE

MINERAL CA-FKU-010219 Date: \_\_\_\_\_

Prior to employee beginning workday, if thermometer is available, take a temperature reading and ask screening questions. Record findings below:

Employee Name/ ICS Position	Are you feeling ill/feverish?	Are you having chills?	New/ Worsening cough?	New/ Worsening shortness of breath?	New or prolonged sore throat?	Fever $\geq$ 100.4°F



## COVID-19 DAILY CHECKLIST

<b>Disinfect ALL Surfaces</b>	At least <u>twice a day</u> , wipe down <b>ALL</b> hard surfaces in the work station and on apparatus using an appropriate cleaning disinfectant solution <b>OR</b> a bleach solution of 1/3 cup of bleach to one (1) gallon of water.
<b>Decontamination Procedures for Personnel, Clothing, Etc.</b>	Please refer to the <a href="#">CAL FIRE COVID-19 Response Recommended Actions and Guidance Document</a> on the CAL FIRE EMS Program Intranet page for information regarding decontamination procedures for personnel, apparatus, equipment and workplace.
<b>Temperature Scans</b>	If thermometer is available, conduct scan of <b>all</b> employees at the start of <b>workday</b> .
<b>Ensure Proper Hygiene</b>	Ensure <b>ALL</b> employees frequently wash hands for a minimum of 20 seconds often throughout the shift and after every patient and/or personal contacts.
<b>Documentation</b>	If any personnel have an identified exposure, <b>IMMEDIATELY</b> follow notification procedures for exposure.
<b>Observe Physical Distancing Protocols</b>	Review all Centers for Disease Control & Prevention (CDC) recommended social distancing protocols and personal protection guidelines regarding <a href="#">How to Protect Yourself &amp; Others</a> .
<b>Supply Needs</b>	Ensure all locations have adequate supply of required supplies to ensure smooth uninterrupted operations.

### PROTOCOL FOR "YES" ANSWERS:

If an employee answers "YES" to any question:

1. Isolate them from other employees and refer them to an appropriate healthcare provider for evaluation and treatment.
2. Follow the notification process as outlined in the memorandum "COVID-19 Guidelines for all CAL FIRE."

### REMIND PERSONNEL TO:

- Wash their hands and use alcohol-based hand sanitizer often.
- Do not shake hands, touch or hug others.
- Use physical distancing of six (6) feet or greater whenever possible including meals, exercise, and tasks in the station.
- Personnel should follow CDC, CDPH, along with any applicable local county public health protocols regarding COVID-19 directives/orders both inside and outside the workplace.
- Do not come into work if feeling ill/feverish or showing any respiratory illness signs.





