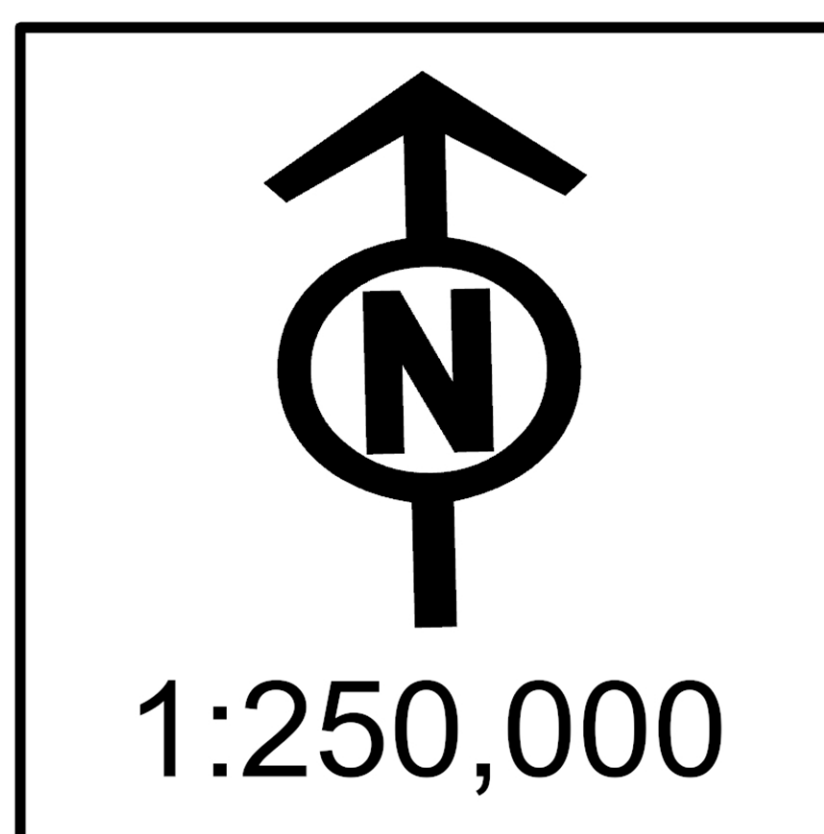
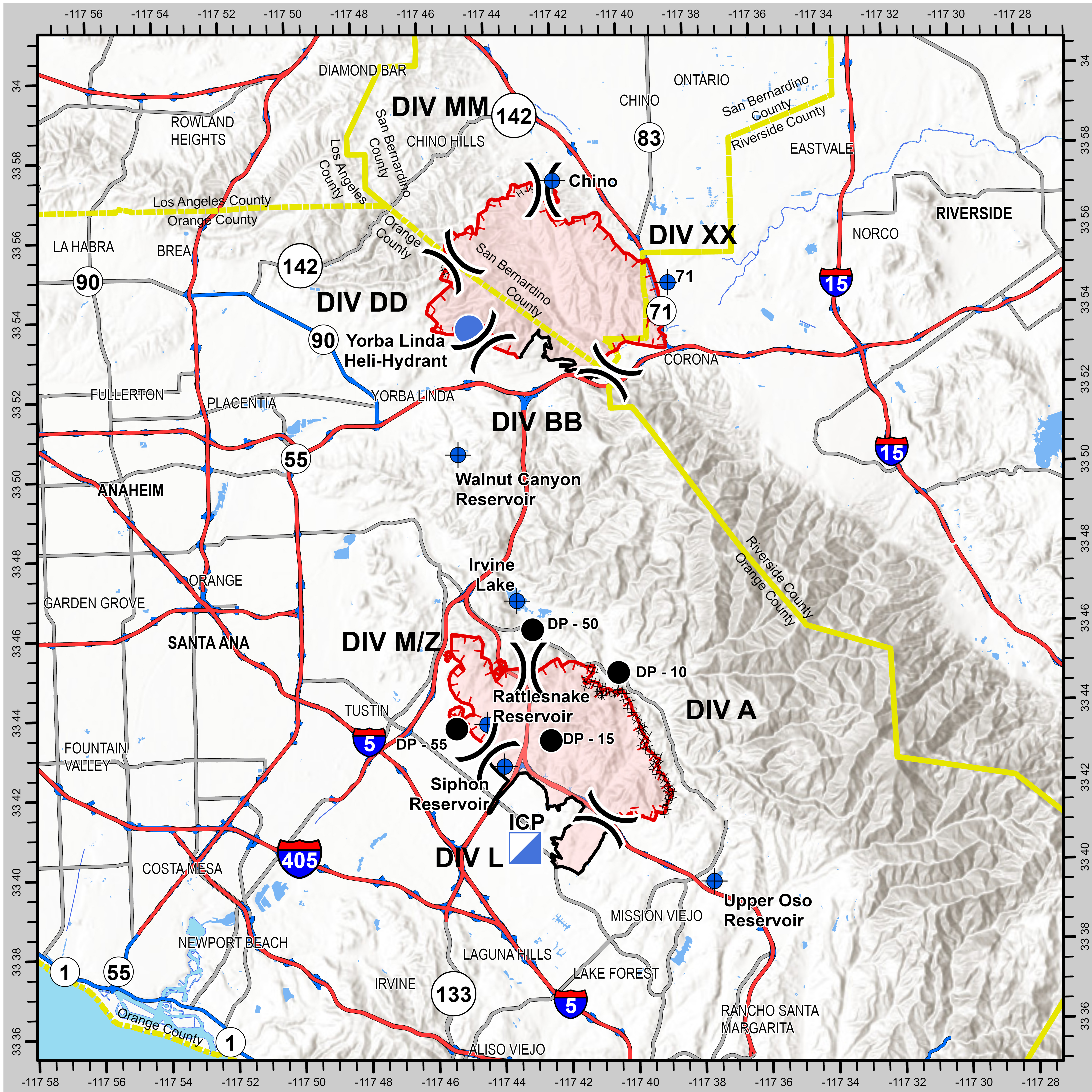


BRIEFING MAP

BLUE RIDGE INCIDENT - SILVERADO INCIDENT

CA ORC 121612 - CA ORC 121364

OCTOBER 29, 2020



0 2.5 5 10 Miles

Uncontrolled Fire Edge	Completed Dozer Line	Drop Point	Division Break	Helispot
County Boundary	Contained Line	Dip Site	Branch Break	Incident Command Post
Completed Hand Line				

CAL FIRE - INCIDENT MANAGEMENT TEAM 6
Established 1994

IMT 6 GISS
10/29/2020
0004 Hours
NAD 83 Teale Albers

DISCLAIMER:
The displayed incident data is approximate and should only be used for informational purposes. The information contained in supporting base layers was generated from GIS data maintained by different sources and agencies and is not necessarily accurate to mapping, surveying, or engineering standards.