

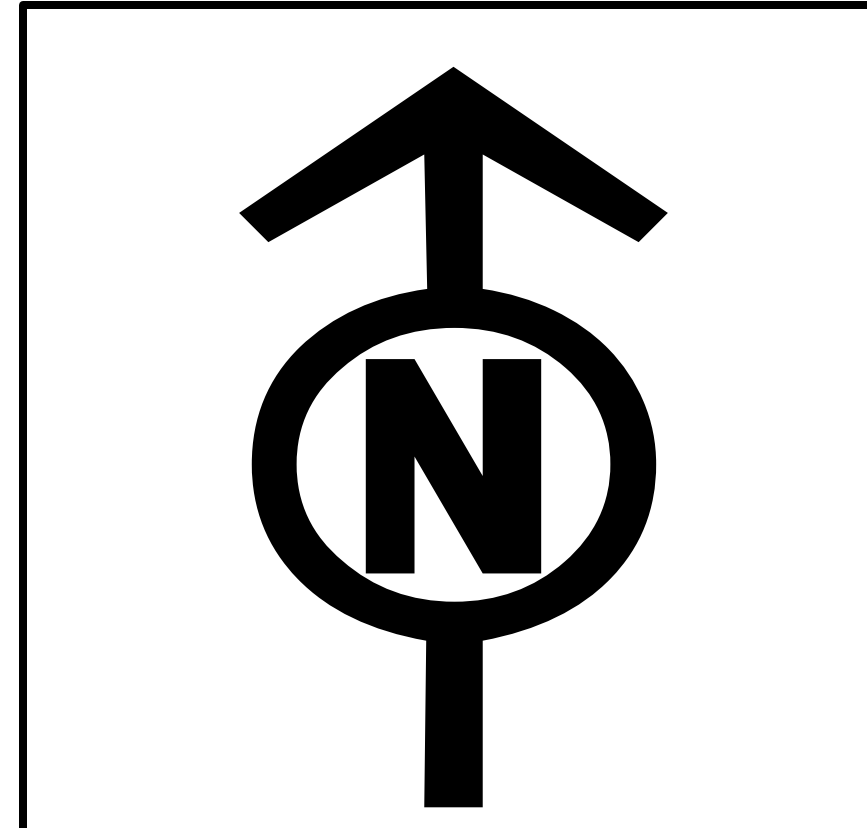
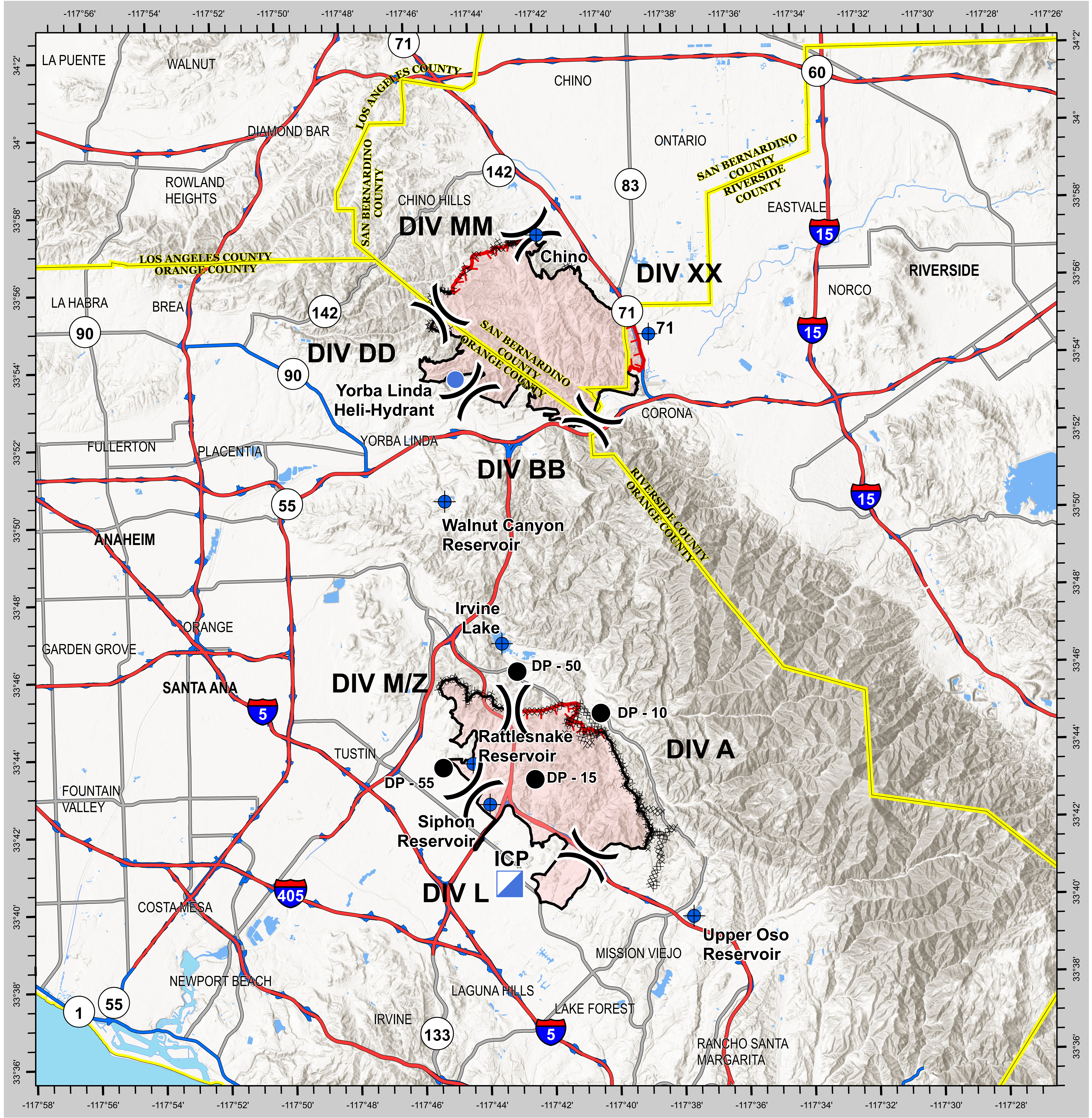
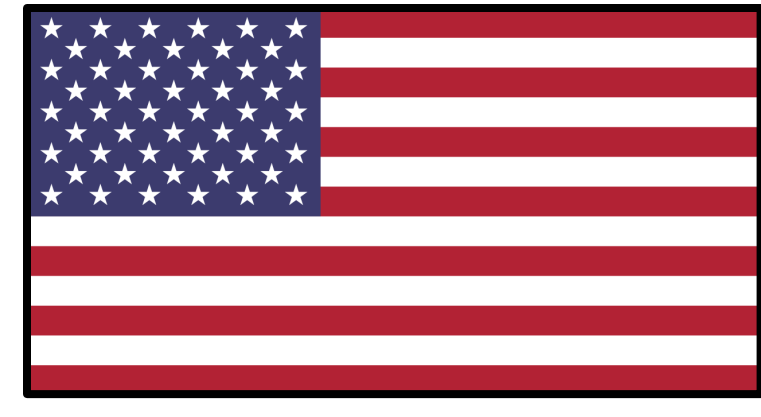


# BRIEFING MAP

## BLUE RIDGE INCIDENT - SILVERADO INCIDENT

### CA ORC 121612 - CA ORC 121364

### NOVEMBER 1, 2020



0 2.5 5 10 Miles

- Dip Site
- Drop Point
- Helispot
- Incident Command Post
- Division Break
- Uncontrolled Fire Edge
- Contained Line
- Completed Dozer Line
- Completed Hand Line
- R-R-R Road as Completed Line
- County Boundary
- Wildfire Daily Fire Perimeter

**CAL FIRE - INCIDENT MANAGEMENT TEAM 6**  
*Established 1994*

IMT 6 GISS  
10/31/2020  
1808 Hours  
NAD 83 Teale Albers

DISCLAIMER:  
The displayed incident data is approximate and should only be used for informational purposes. The information contained in supporting base layers was generated from GIS data maintained by different sources and agencies and is not necessarily accurate to mapping, surveying, or engineering standards.