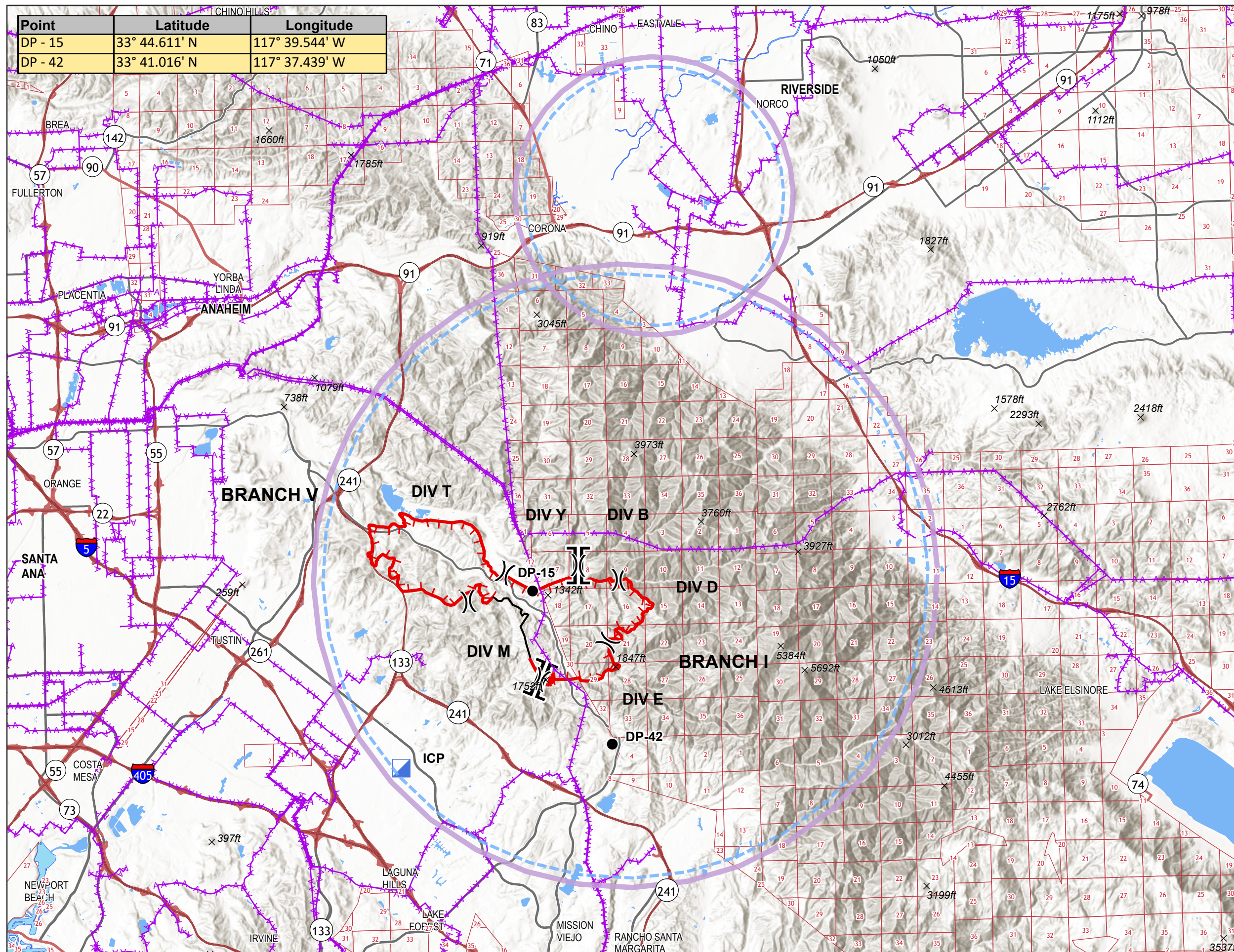


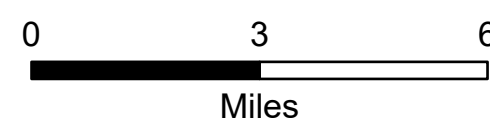
Point	Latitude	Longitude
DP - 15	33° 44.611' N	117° 39.544' W
DP - 42	33° 41.016' N	117° 37.439' W

AIR OPS MAP

BOND INCIDENT
CA ORC 136890
 DECEMBER 4, 2020



- Drop Point
- Incident Command Post
- () Division Break
- || Branch Break
- ▬ Uncontrolled Fire Edge
- Contained Line
- Section
- ⚡ Transmission Lines
- × Summits
- ⬭ TFR



1:160,000

DISCLAIMER:
 The displayed incident data is approximate and should only be used for informational purposes. The information contained in supporting base layers was generated from GIS data maintained by different sources and agencies and is not necessarily accurate to mapping, surveying, or engineering standards.

IMT 3 GIS
 12/3/2020
 2120 Hours
 NAD 83 Teale Albers