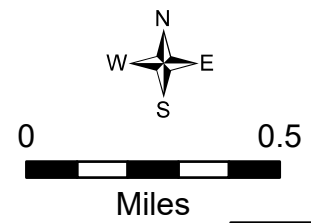


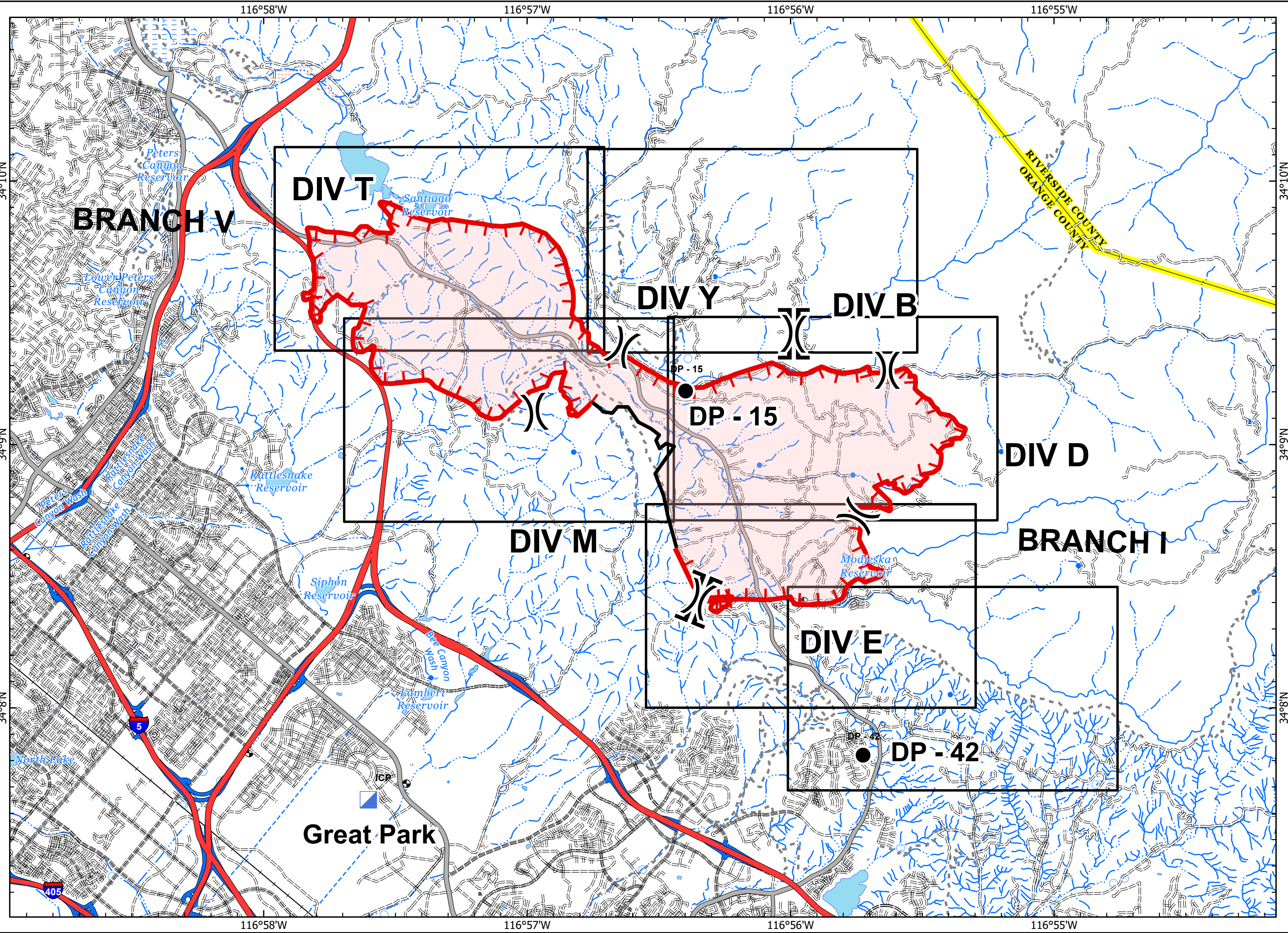


IAP MAP
Bond Fire
 CA-ORC-136890
 December 4, 2020
 0700 - 0700 NAD 83

- Branch Break
- Division Break
- Drop Point
- Incident Command Post
- Uncontrolled Fire Edge
- Contained Line



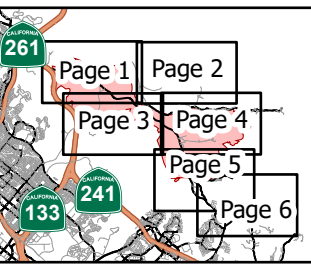
OCFA GIS
 12/3/2020
 23:13 hrs



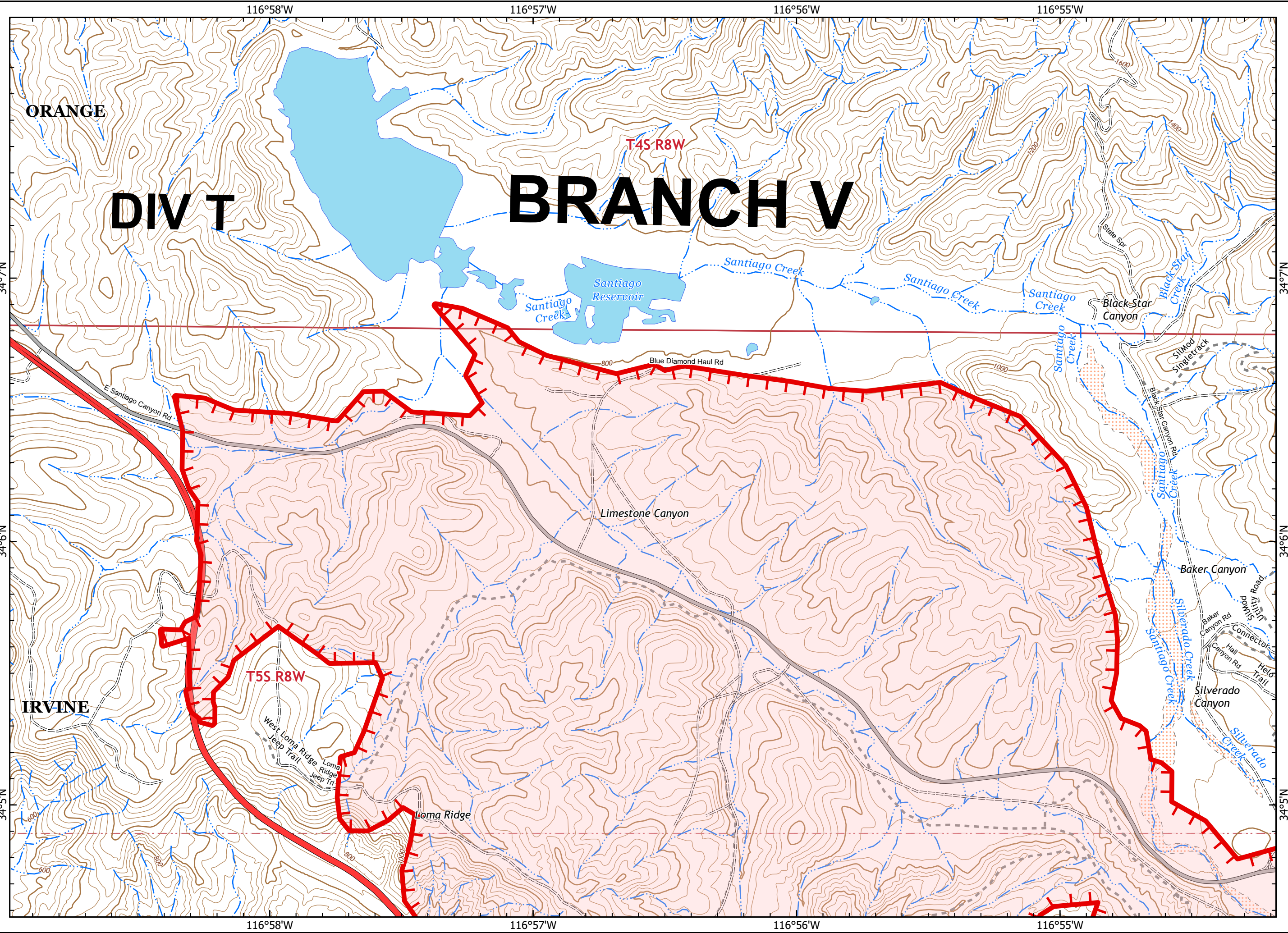


IAP MAP
Bond Fire
 CA-ORC-136890
 December 4, 2020
 0700 - 0700 NAD 83
 Page 1 of 6

- Branch Break
- Division Break
- Drop Point
- Incident Command Post
- Uncontrolled Fire Edge



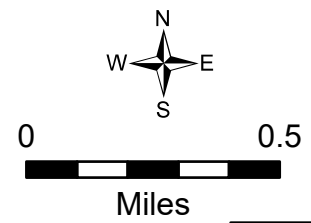
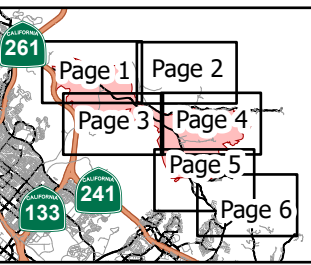
North arrow and scale bar (0 to 0.5 Miles).
 OCA GIS
 12/3/2020
 23:32 hrs



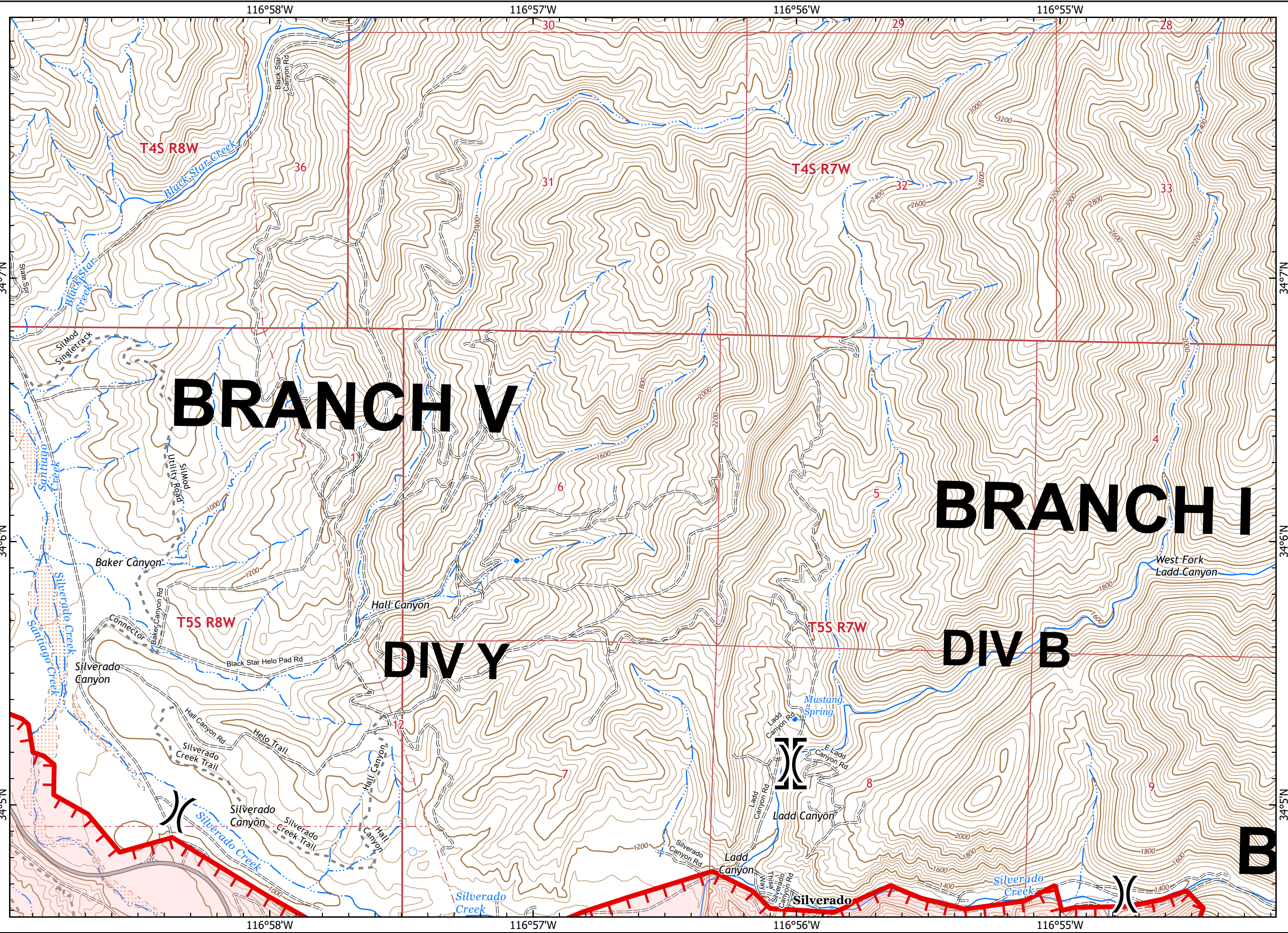


IAP MAP
Bond Fire
 CA-ORC-136890
 December 4, 2020
 0700 - 0700 NAD 83
 Page 2 of 6

- Branch Break
- Division Break
- Drop Point
- Incident Command Post
- Uncontrolled Fire Edge



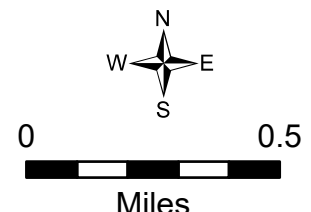
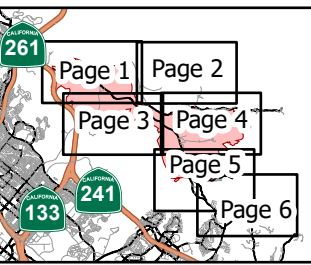
OCFA GIS
 12/3/2020
 23:32 hrs



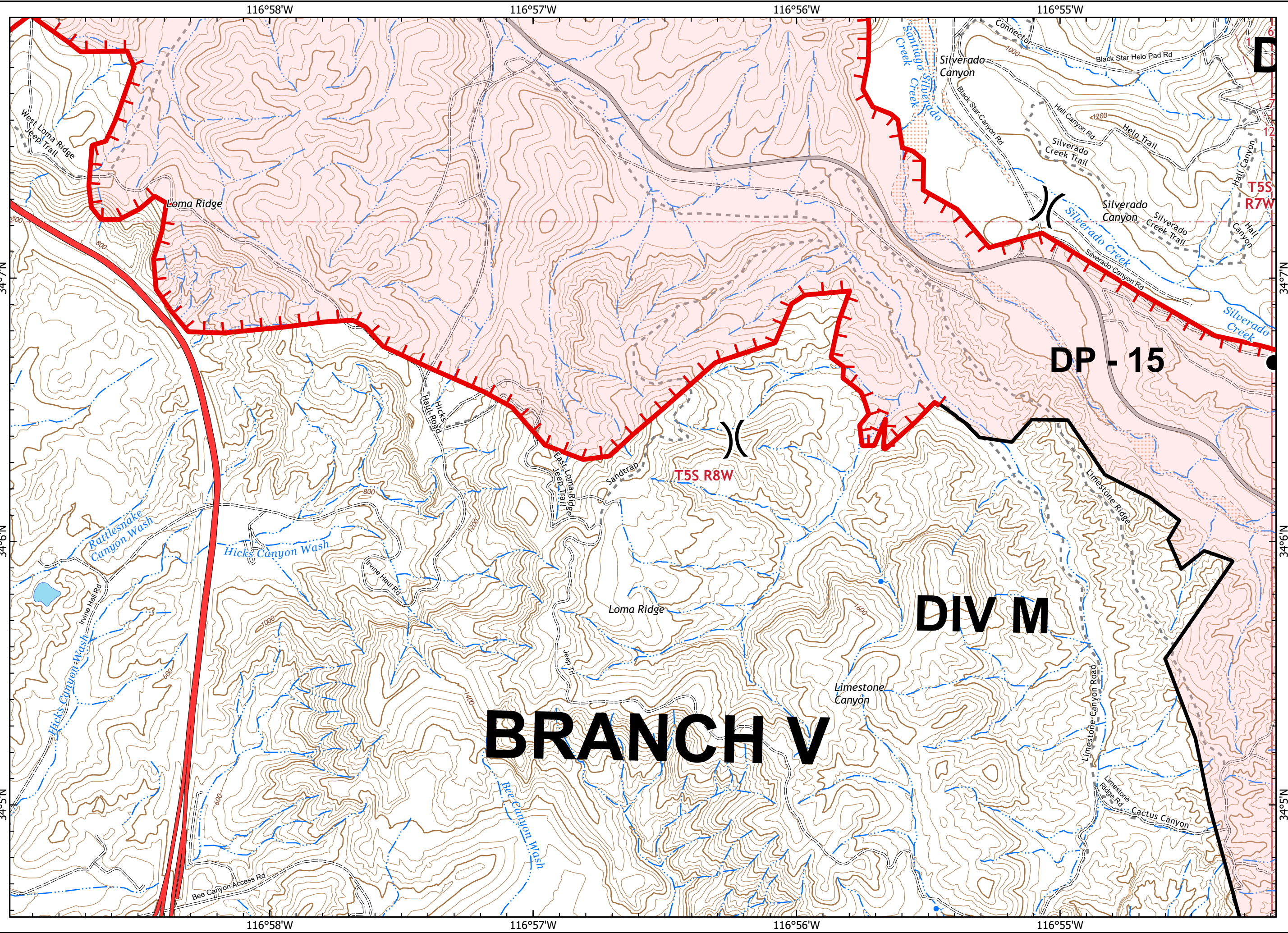


IAP MAP
Bond Fire
 CA-ORC-136890
 December 4, 2020
 0700 - 0700 NAD 83
 Page 3 of 6

- Branch Break
- Division Break
- Drop Point
- Incident Command Post
- Uncontrolled Fire Edge
- Contained Line



OCFA GIS
 12/3/2020
 23:32 hrs



BRANCH V

DIV M

DP - 15

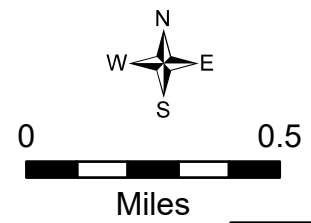
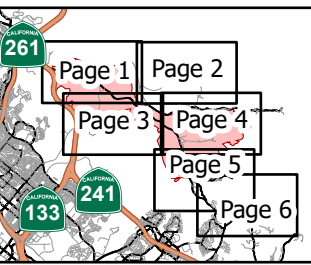
T5S R8W

T5S R7W

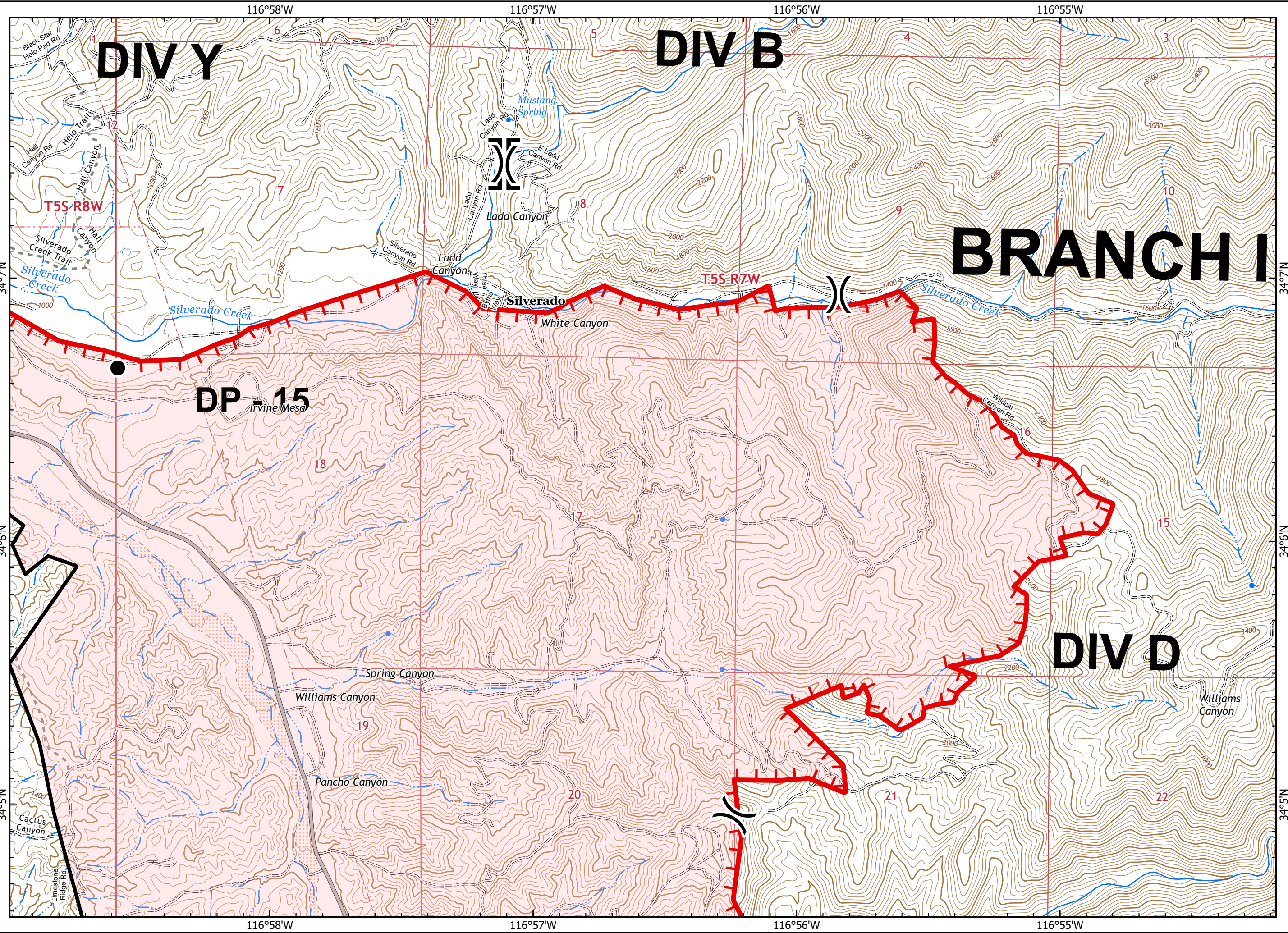


IAP MAP
Bond Fire
 CA-ORC-136890
 December 4, 2020
 0700 - 0700 NAD 83
 Page 4 of 6

- Branch Break
- Division Break
- Drop Point
- Incident Command Post
- Uncontrolled Fire Edge
- Contained Line



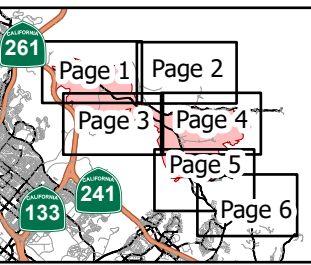
OCFA GIS
 12/3/2020
 23:32 hrs





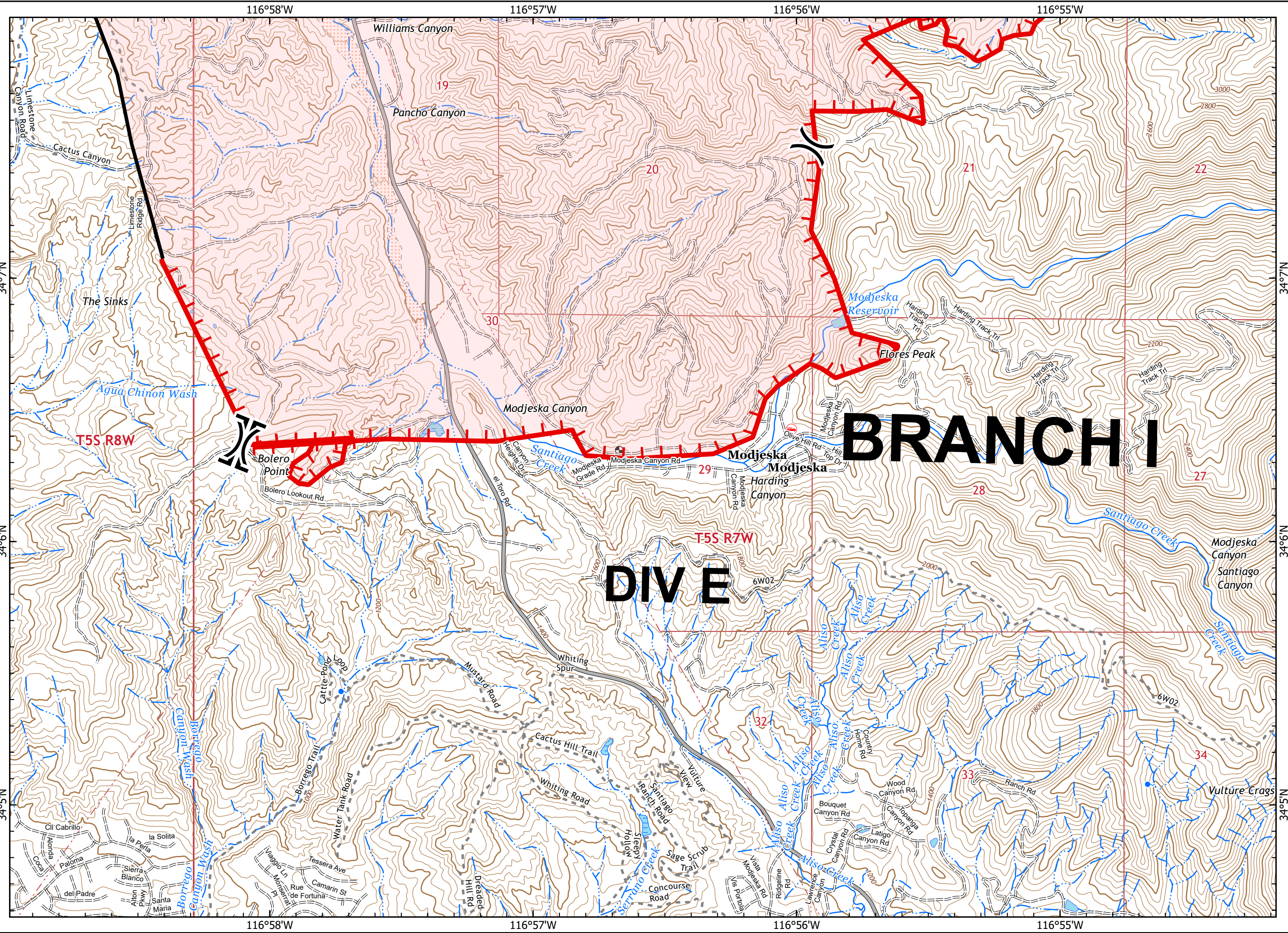
IAP MAP
Bond Fire
 CA-ORC-136890
 December 4, 2020
 0700 - 0700 NAD 83
 Page 5 of 6

- Branch Break
- Division Break
- Drop Point
- Incident Command Post
- Uncontrolled Fire Edge
- Contained Line



0 0.5 Miles

OCFA GIS
 12/3/2020
 23:32 hrs



BRANCH I

DIV E

T5S R8W

T5S R7W

34

22

27

21

28

32

33

19

20

30

29

32

21

28

33

34

3000

2800

2600

2200

2000

1800

1600

1400

1200

1000

800

600

400

200

0

-200

-400

-600

-800

-1000

-1200

-1400

-1600

-1800

-2000

-2200

-2400

-2600

-2800

-3000

-3200

-3400

-3600

-3800

-4000

-4200

-4400

-4600

-4800

-5000

-5200

-5400

-5600

-5800

-6000

-6200

-6400

-6600

-6800

-7000

-7200

-7400

-7600

-7800

-8000

-8200

-8400

-8600

-8800

-9000

-9200

-9400

-9600

-9800

-10000

-10200

-10400

-10600

-10800

-11000

-11200

-11400

-11600

-11800

-12000

-12200

-12400

-12600

-12800

-13000

-13200

-13400

-13600

-13800

-14000

-14200

-14400

-14600

-14800

-15000

-15200

-15400

-15600

-15800

-16000

-16200

-16400

-16600

-16800

-17000

-17200

-17400

-17600

-17800

-18000

-18200

-18400

-18600

-18800

-19000

-19200

-19400

-19600

-19800

-20000

-20200

-20400

-20600

-20800

-21000

-21200

-21400

-21600

-21800

-22000

-22200

-22400

-22600

-22800

-23000

-23200

-23400

-23600

-23800

-24000

-24200

-24400

-24600

-24800

-25000

-25200

-25400

-25600

-25800

-26000

-26200

-26400

-26600

-26800

-27000

-27200

-27400

-27600

-27800

-28000

-28200

-28400

-28600

-28800

-29000

-29200

-29400

-29600

-29800

-30000

-30200

-30400

-30600

-30800

-31000

-31200

-31400

-31600

-31800

-32000

-32200

-32400

-32600

-32800

-33000

-33200

-33400

-33600

-33800

-34000

-34200

-34400

-34600

-34800

-35000

-35200

-35400

-35600

-35800

-36000

-36200

-36400

-36600

-36800

-37000

-37200

-37400

-37600

-37800

-38000

-38200

-38400

-38600

-38800

-39000

-39200

-39400

-39600

-39800

-40000

-40200

-40400

-40600

-40800

-41000

-41200

-41400

-41600

-41800

-42000

-42200

-42400

-42600

-42800

-43000

-43200

-43400

-43600

-43800

-44000

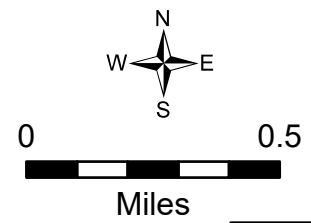
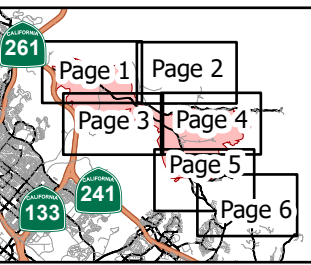
-44200

-44400



IAP MAP
Bond Fire
 CA-ORC-136890
 December 4, 2020
 0700 - 0700 NAD 83
 Page 6 of 6

- Branch Break
- Division Break
- Drop Point
- Incident Command Post
- Uncontrolled Fire Edge



OCFA GIS
 12/3/2020
 23:32 hrs

