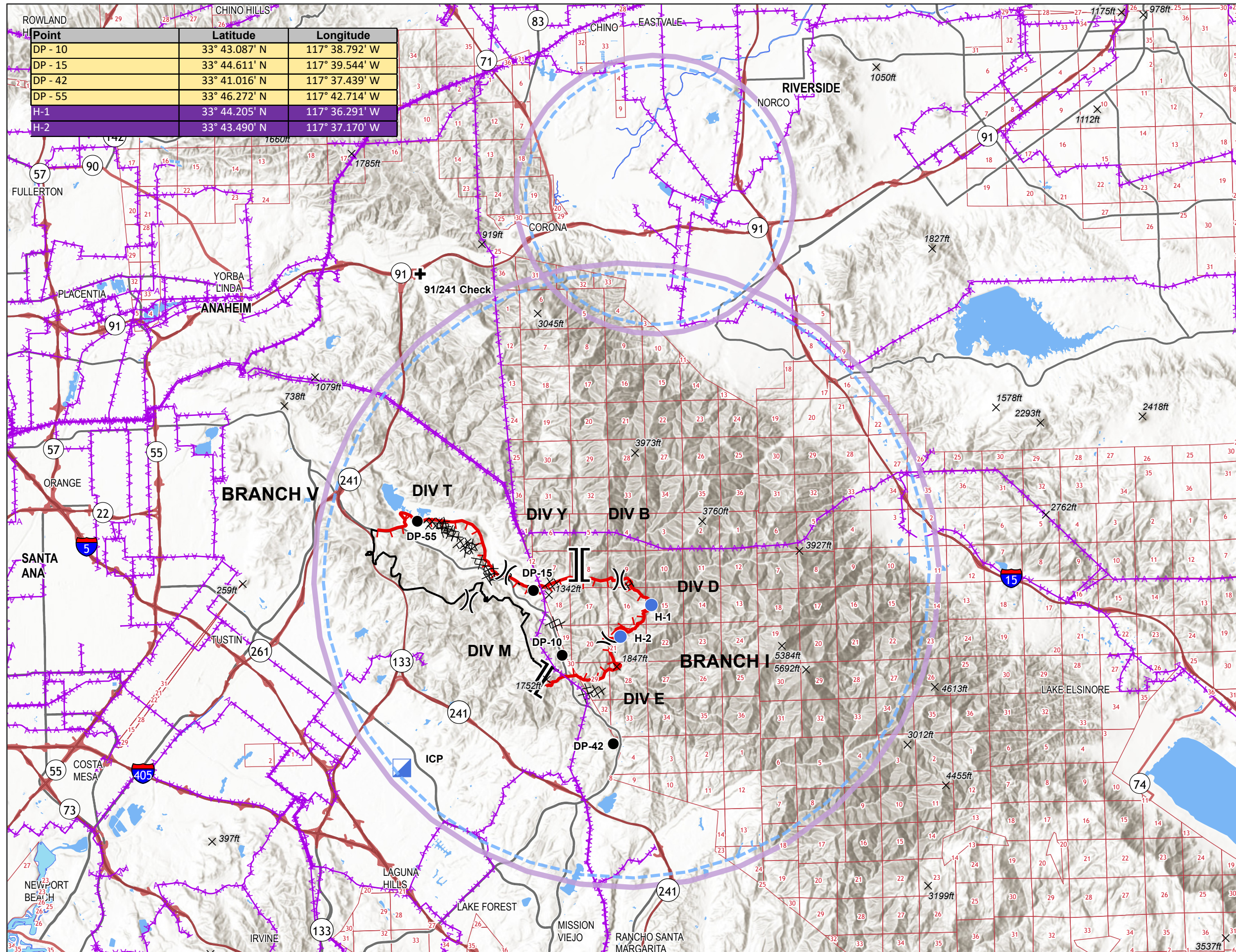


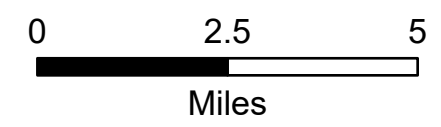
# AIR OPS MAP

**BOND FIRE**  
**CA ORC 136890**  
 DECEMBER 5, 2020

Point	Latitude	Longitude
DP - 10	33° 43.087' N	117° 38.792' W
DP - 15	33° 44.611' N	117° 39.544' W
DP - 42	33° 41.016' N	117° 37.439' W
DP - 55	33° 46.272' N	117° 42.714' W
H-1	33° 44.205' N	117° 36.291' W
H-2	33° 43.490' N	117° 37.170' W



- Check
- Drop Point
- Helispot
- Incident Command Post
- Summits
- Uncontrolled Fire Edge
- Contained Line
- Completed Dozer Line
- Completed Hand Line
- Road as Completed Line
- Transmission Lines
- TFR



1:160,000

DISCLAIMER:  
 The displayed incident data is approximate and should only be used for informational purposes. The information contained in supporting base layers was generated from GIS data maintained by different sources and agencies and is not necessarily accurate to mapping, surveying, or engineering standards.

IMT 4 GISS  
 12/4/2020  
 2043 Hours  
 NAD 83 Teale Albers