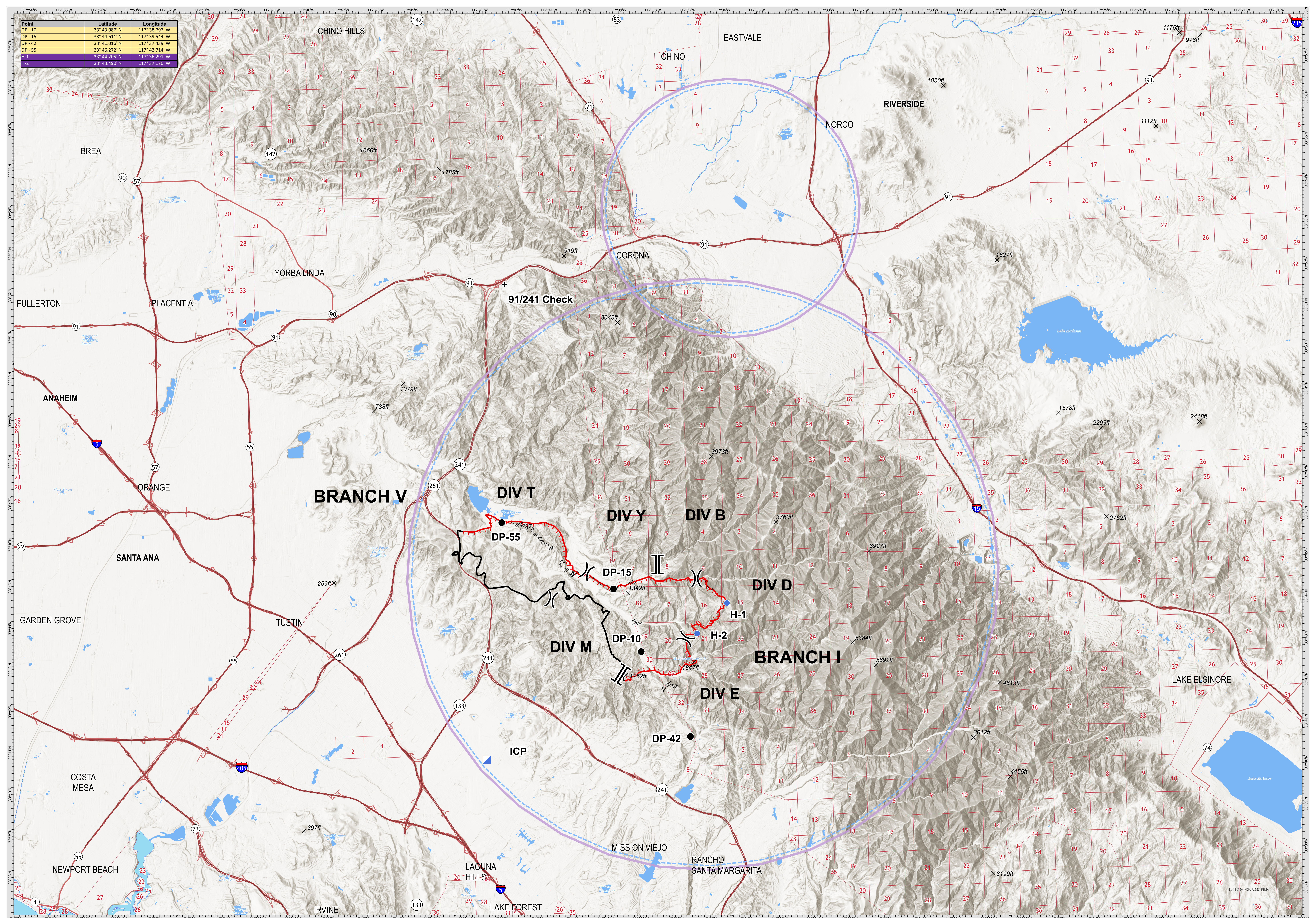


Point	Latitude	Longitude
DP-10	33° 43.087' N	117° 38.792' W
DP-15	33° 44.611' N	117° 39.544' W
DP-42	33° 41.016' N	117° 37.439' W
DP-55	33° 46.272' N	117° 42.714' W
H-1	33° 44.205' N	117° 36.291' W
H-2	33° 43.490' N	117° 37.170' W



**AIR OPS MAP**  
DECEMBER 5, 2020

0 0.3 0.6 1.2 1.8 2.4  
Miles

1:48,000

IMT 4 GISS  
12/4/2020  
2042 Hours  
NAD 83 Teale Albers

+	+	—	—
•	×	---	□
•	—	—	□

**AIR OPS MAP**  
**BOND FIRE - CA ORC 136890**  
DECEMBER 5, 2020

**AIR OPS MAP**  
DECEMBER 5, 2020