

* CORRECTED *

INCIDENT ACTION PLAN

BOND INCIDENT

CA-ORC-136890

Saturday



OPERATIONAL PERIOD

12/5/2020 0700
to
12/6/2020 0700



Briefing Frequency - CDF Tac 29

INCIDENT OBJECTIVES (ICS 202)

1. Incident Name: <p style="text-align: center;">Bond</p>	2. Operational Period:	Date From: 12/5/2020 Time From: 0700	Date To: 12/6/2020 Time To: 0700
---	-------------------------------	---	-------------------------------------

3. Objective(s):

Management Objectives

- Provide for and maintain Public and First Responder safety by utilizing the incident safety analysis process.
- Ensure COVID-19 precautions and best practices are met at all times.
- Protect values at risk; including infrastructure, improvements, private and public lands, natural and cultural resources.
- Foster and maintain relationships with all cooperators and stakeholders.
- Ensure coordinated, timely and accurate release of public information.
- Be financially responsible for all management and fire suppression tactics.

Control Objectives

- Keep the fire North of Live Oak Road
- Keep the fire South of Black Star Canyon
- Keep the fire East of 241 Toll Road
- Keep the fire West of North Main Divide

General Situational Awareness:

Steep and rugged terrain, critically dry and receptive fuel beds, active area for fire history and drought stressed trees.

In the COVID-19 environment, high density populations or large groups are particularly at risk. To help protect yourself, your family, and to ensure all employees return home safely, make sure to practice social distancing.

Enhanced hygiene (especially handwashing), PPE & monitoring practices help limit the infection rate of first responders.

5. Site Safety Plan Required? Yes No


Approved Site Safety Plan(s) Located at:

6. Incident Action Plan

<input checked="" type="checkbox"/> ICS 203	<input checked="" type="checkbox"/> ICS 215A	<input type="checkbox"/> ICS 205 A	<input type="checkbox"/>
<input checked="" type="checkbox"/> ICS 204	<input checked="" type="checkbox"/> ICS 220	<input checked="" type="checkbox"/> Training Message	<input type="checkbox"/>
<input checked="" type="checkbox"/> ICS 205	<input checked="" type="checkbox"/> Facility Maps	<input type="checkbox"/> Travel Map	<input type="checkbox"/>
<input checked="" type="checkbox"/> ICS 206	<input checked="" type="checkbox"/> Weather Forecast	<input checked="" type="checkbox"/> Demob Plan	<input type="checkbox"/>
<input checked="" type="checkbox"/> ICS 208	<input checked="" type="checkbox"/> Fire Behavior	<input checked="" type="checkbox"/> Finance Message	<input checked="" type="checkbox"/> ICS 214

7. Prepared By: Dave Shy	Position/Title: PSC	Signature:
8. Approved by Incident Commander:	Eddy Moore	Signature:

ORGANIZATION ASSIGNMENT LIST (ICS 203)

1. Incident Name: Bond		2. Operational Period: Date From: 12/5/2020		Date To: 12/6/2020	
		Time From: 0700		Time To: 0700	
3. Incident Commander(s) and Command Staff:			7. Operation Section:		
IC/UC's	Dave Russell, Ron Roberts, Scott Grismick, Joses Walehwa	Operations	Josh Bischof, Mike Petro (T)		
Deputy	Eddy Moore	Deputy Operations	Shane Laurderdale, Shawn Raley, Craig Covey (T)		
Safety Officer	Doug Ferro, Jack Piccinini, Bill Murphy(T)	Night Ops	Monty Smith		
Information Officer	Steve Kaufmann, Chris Harvey(T), Thanh Nguyen	Staging Area	Great Park	Gordan Levine	
Liaison Officer	Dave Pender, Mitch Villalpando, Rob Capoblanco (T)	Branch	I	Tim Perkins	
LELO	Josh Allen, LT. Anthony Bertain	Division/Group	B	Chad Costa, Bill Murphy (T)	
		Division/Group	D	Hector Medrano (12) Ron Earls (T)	
Agency/Organization	Name	Division/Group	E	Nathan Arellano, T.J. McGovern	
OCFA	Kenny Dossey	Division/Group			
USFS	Darrell Vance	Division/Group			
OCSO	Mke Peters	Branch	V	Loren Monsen	
CALFIRE	Barry Owens	Division/Group	M	Todd Horton	
Care Ambulance	Jeremy Ruga	Division/Group	T	Shane Frederick	
OC Parks	Chris Lorenzi	Division/Group	Y	Matthew Levesque	
CHP	David Rodgers	Division/Group			
OC EOC	Kevin McArthur	Division/Group			
Caltrans	Ramone Torres	Branch	Suppression Repair	Dave Erikson	
SCE	Scott Brown	Division/Group			
Capstone	Terry Bowen	Division/Group			
IRWD	Bill Wesson	Division/Group			
Cal OES	Dave Stone	Branch			
		Division/Group			
		Division/Group			
5. Planning Section:					
Chief	Jason Martin, Kevin Fetterman (T)	Division/Group			
Deputy	Dave Shy, Gabe Garcia	Division/Group			
Resource Unit	Gwyndolyn Ozard, Nochella Funes, Brian Toroslan (T) Dan Brown(T)	Division/Group			
Situation Unit	Denny O'Neil, Brandon Strohbehn, Brad Burns (T)	Branch			
Documentation Unit	Tamara Anderson (T)	Division/Group			
Demobilization Unit	Chris Lynch, Floyd Horn	Division/Group			
GISS	Dan Dresselhaus, Rebecca Kriha	Division/Group			
FBAN	Jonathan Pangburn	Division/Group			
IMET	Rich Thompson	Division/Group			
DINS	Nick Pivaroff	Air Operations Branch	Director:	Greg Bradshaw	
TNSP	Dennis Martin	Air Support Group Supervisor	Jonathan Keesee, Ray Gomez (T)		
		Air Tactical Group Supervisor	Doug Ross		
		Helibase Manager	Rick Boman		
6. Logistics Section					
Chief	Matt Reich, Scott Ashbach				
Deputy	Mathew Brandt, Steve Dohman				
Supply	Shon Burris, Mark Mollet				
Facilities Unit	Matt Brown, Jason Wilson (T) Mathew Berger				
Ordering Unit	Daniel Williams, Marc Cornelison				
Communications Unit	Mike Heyfron, Eric White				
Medical Unit	Steve McGrady, Rob Reed				
			8. Finance/Administration Section:		
		Chief	Mara Zaver, Roger Raines, Jim Ruane		
		Time Unit	Greg Tunzi		
		Procurement Unit	Courtney Arebalo		
		Comp/Claims Unit	Sean Bowe		
		Cost Unit	Angela Davidson		
Prepared By: Name: David Shy		Position/Title: PSC		Signature: 	
ICS 203		Date/Time: 12/3/2020 2000 hours		NIMS IAP	

Fire and COVID-19 Briefing Checklist

Self-Awareness / Screening

- Immediately separate yourself from others.
- Notify supervisor if you or others experience:
 - Cough, more than expected
 - Shortness of breath or difficulty breathing
 - New loss of taste or smell
 - Fever
 - Chills
 - Sore throat
 - Muscle pain
- Review and follow crew and division plans to isolate, triage, and transport symptomatic personnel.

Hygiene on the Fireline

- Properly wash or sanitize your hands often, especially before and after eating or entering a public place, and after coughing or sneezing.
- Avoid handshakes and communal use items.
- Maintain a supply of hand sanitizer and hand wipes. Inform supervisor of needed resupply.
- Disinfect high touch surfaces often:
 - Radios, phones, doors, pumps, fuel cans, etc.

Social Distancing and Protective Equipment

- Initiate, practice, and remind others of social distancing.
- Conduct briefings and conversations outdoors and at least 6 feet apart.
- Utilize face coverings as a tool when practical.
- Clean or replace dirty face coverings, equipment, and PPE.

Communications

- Face coverings and social distancing complicate communications.
Ensure effective sender/receiver messaging.

Protect yourself, your crew, and your camp!

Find more information: <https://www.nwccg.gov/coronavirus>.



INCIDENT Weather Forecast



FORECAST NO: 2
 PREDICTION FOR: 24 hour SHIFT
 SHIFT DATE: 12/5/20 – 12/6/20 (0700-0700)
 TIME AND DATE
 FORECAST ISSUED: 12/4/20 @ 1915

NAME OF FIRE: Bond
 UNIT: OCFA, CalFire
 SIGNED:

Rich Thompson
 Incident Meteorologist

WEATHER DISCUSSION:

Weak diurnal flow will prevail through the operational period with weak downslope/downvalley winds during the night and morning hours and weak upslope/upvalley winds in the afternoon and evening hours. Dry conditions will persist with minimum humidity in the single digits with little recovery overnight.

Near persistent conditions are expected on Sunday. On Monday and Tuesday, another round of Santa Ana winds is expected. Northeast winds, gusting 30 to 45 MPH, will combine with very low relative humidity to bring widespread critical fire weather conditions to the incident.

WEATHER FORECAST:

WEATHER: Partly cloudy.

TEMPERATURES: Max: 66-72.
 Min: 48-56.

HUMIDITY: Min: 6-12%.
 Max: 15-25%.

20 FT WINDS:
 RIDGETOP - 0700-1100: Northeast to east 5-10 MPH Gust 12-15 MPH.
 1100-2000: West to northwest 5-10 MPH Gust 12-15 MPH.
 2000-0700: Northeast to east 5-10 MPH Gust 12-15 MPH.


SLOPE/VALLEY - 0700-1000: Northeast to east 6-12 MPH Gust 15-20 MPH.
 1000-1900: Southwest/upvalley 5-10 MPH Gust 12-15 MPH.
 1900-0700: Downslope/downvalley 3-6 MPH Gust 10 MPH.

EXTENDED FORECAST:

Sunday: Partly cloudy. High temperatures 66-72. Low temperatures 48-56.
 Minimum RH: 10-20%. Maximum RH: 20-35%. Weak northeasterly winds in the night/morning hours with weak southwest/onshore winds in the afternoon/evening hours

Monday/Tuesday: Partly cloudy. High temperatures 68-76. Low temperatures 50-58.
 Minimum RH: 8-15%. Maximum RH: 15-25%. Northeast winds 15-25 MPH with gusts 30-45 MPH.

FIRE BEHAVIOR FORECAST

FORECAST NUMBER: 2	TYPE OF FIRE: Wildland Fire
FIRE NAME: Bond	OPERATIONAL PERIOD: 24hr 12/5 (0700-0700)
DATE ISSUED: 12/4/2020	TIME ISSUED: 1900
UNIT: ORC	SIGNED: Jonathan Pangburn, FBAN 

INPUTS

WEATHER SUMMARY

****LOW RH; DIURNAL WIND PATTERN****
See Weather Forecast in IAP.

OUTPUTS

GENERAL:

Critical live and dead fuel moisture. Low RH and lack of overnight recovery will maintain elevated spotting potential, especially in light flashy fuels to the west.

Potential remains for expansive growth due to fuel moisture and wind potential. BI & 1,000-hr dead fuels above 90th percentile. ERC above 97th percentile. 100-hr dead fuels at record low for this time of year. Any fire established outside of recent burn scars could see dangerous rates of spread.

With forecasted wind & weather conditions, expect:

	Max. Flame Length	Max. Rate of Spread	Spotting	Probability of Ignition
Grass	5' (1.5 m)	35 ch/hr (0.7 km/hr)	< 1/4 mile (.4 km)	70%
Grass/Shrub Mix	5' (1.5 m)	25 ch/hr (0.5 km/hr)	< 1/4 mile (.4 km)	70%
Shrub	15' (4.5 m)	40 ch/hr (0.8 km/hr)	< 1/4 mile (.4 km)	70%
Timber Understory	10' (3.0 m)	10 ch/hr (0.2 km/hr)	< 1/4 mile (.4 km)	70%
Timber Litter	2' (0.6 m)	5 ch/hr (0.1 km/hr)	< 1/4 mile (.4 km)	70%

****minimum safety zone size for shrub is 1/2-acre (0.2 Ha) for a Strike Team of Engines.**

****minimum safety zone size for timber understory is 1/3-acre (0.1 Ha) for a Strike Team of Engines.**

****minimum safety zone size for grass is 1/4-acre (0.1 Ha) for a Strike Team of Engines.**

SPECIFIC:

DIV B / D / E: Heavier shrub fuels will carry fire with daytime onshore flow. Expect slope-driven fire, moving into older fuels. This has potential to spread fire around fire scar with nighttime downslope wind.

DIV M: Watch for wind alignment with heavier fuels outside the burn scar. Fire could align toward Lake Forest. Spotting potential with wind-driven fire.

DIV T: Grass fuels with shrub intermix and oak canopy. Flashy fuels with spotting potential.

DIV Y: Watch for wind alignment into Silverado Canyon. WUI residences, with heavier fuel loading to the north.

AIR OPERATIONS:

Mostly clear.

Mixing height: 3,500 ft. AGL. Transport winds: NE 5-10 morning; SW 5-10 afternoon.

Sunrise 0641, Sunset 1642.

SAFETY

Escape routes: In flashy fuels with gusty winds, your escape route should be one foot in the burn.

Fire in drainages can dislodge rolling objects and firebrands.



SAFETY MESSAGE

Bond Fire

CA-ORC-20-136890 December 5, 2020 0700-0700



S
A
F
E
T
Y

ACCOUNTABILITY

Watch Out

- Multiple resources from outside the operational area
- Challenging terrain can limit clear communications

Mitigation

- Know who you are working for, when and where
- Maintain good communications with your supervisor and adjoining forces

ROAD HAZARDS

Watch Out

- Utility crews working on and near roads
- Residents driving in all areas, some on UTV's

Mitigation

- Slow down, maintain a safe distance, allow for extra travel time
- Turn on emergency lights for your safety when parked
- Utilize cones for added traffic awareness

COMPLACENCY

Watch Out

- Coming to the end of a very long fire season
- Tired crews have worked more this year than ever before

Mitigation

- Proper nutrition, rest and hydration reduces fatigue and exhaustion emergencies
- Maintain a safe work/rest ratio

COVID-19

REDUCE THE EXPOSURE AND SPREAD BY:

- **Wear a face covering when:**
 - ✓ In public and unable to maintain six feet of social distance
 - ✓ When at the ICP and unable to maintain six feet social distance
 - ✓ At all times when you are in the food line

Jason Williams

CAL FIRE IMT TEAM 4 SAFETY

E
V
E
R
Y
O
N
E
S
R
E
S
P
O
N
S
I
B
I
L
I
T
Y

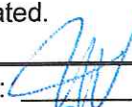

S
A
F
E
T
Y

S
A
F
E
T
Y



INCIDENT ACTION PLAN SAFETY ANALYSIS (ICS 215A)



1. Incident Name: Bond		2. Incident Number: CA-ORCC-136890	
3. Date/Time Prepared: Date: 12/04/2020 Time: 1700		4. Operational Period: Date From: 12/05/2020 To: 12/06/2020 Time From: 0700 hours To: 0700 hours	
5. Incident Area	6. Hazards/Risks	7. Mitigations	
ALL	Potential Extreme Fire Behavior due to winds, Fuel and Terrain	Watch for alignment conditions and spotting; Fire is in steep terrain which can cause increased rates of spread	
ALL	COVID-19: Reduce exposure potential to yourself, your crew, and the public	Wear a mask while in the ICP, while feeding and with the public, and when six feet of social distancing is difficult. Wash hands for at least 20-seconds.	
DIV B, Y	Narrow roadways	Turn lights on, observe speed limits and expect vehicles opposing traffic. Plan for extended travel times.	
DIV B, D, E, M, Y	Working around heavy equipment	Maintain eye-to-eye contact with the operator. Have fire suppression support when operating in dry fuels.	
DIV B, Y	Poor communications	Review ICS 205 and ensure radio clone is current.	
DIV B, D, E, M, Y	Steep, unstable terrain and Roll-Out	Watch footing and maintain downhill tool placement. Be aware of loose material. Look for ash pits and stump holes.	
ALL	Helicopters - Water Drops and Turbulence	Post lookouts and make escape routes and safety zones known. Monitor A/G. Watch overhead for hazard trees and wind changes.	
DIV D, E, M	Firing operations may occur within these divisions if conditions warrant	Plan out all operations; follow the GO/NO GO checklist	
ALL	Private Fire Insurance Engines within the fire area	Be aware of their locations when possible.	
ALL	Driving Hazards	DRIVE SLOW- do a walk around before moving your vehicle; Drive with headlights on; drive defensively; Utilize spotters and backers when conditions require; scout out assignments before committing position.	
DIV B, D, E, M, Y	Heavy Equipment	Watch for rolling material; Monitor safe working distances. Avoid working below dozer. Utilize communication with the operator (radio or hand signals).	
ALL	Tired Crews - End of a very long fire season	Maintain a safe work/rest ratio, stay well fed and hydrated.	
8. Prepared by (Safety Officer): Name: Jason Williams		Signature: 	
Prepared by (Deputy Operations Section Chief): Name: Josh Bischof		Signature: 	
ICS 215A		Date/Time: 12/04/2020 1700hrs	

ASSIGNMENT LIST (ICS 204 WF)

CONTROLLED UNCLASSIFIED
INFORMATION//BASIC

1. Incident Name: <p style="text-align: center; font-size: 1.2em;">Bond</p>	2. Operational Period: Date From: 12/05/20 Date To: 12/06/20 Time From: 0700 Time To: 0700	3. Branch Division <p style="text-align: center; font-size: 1.5em;">I D</p> <p style="text-align: center;">Page 1 of 1 Delta</p>
---	---	---

4. Operations Personnel: Operations Section Chief: Josh Bischof, Mike Petro (T) Branch Director: Tim Perkins Division/Group Supervisor: Hector Medrano (12) Ron Earls (T)	Night Ops: Monty Smith Branch Safety: Jason Ralls, Cameron Rossman (T) Air Attack: Doug Ross
--	---

5. Resources Assigned:	** Resources Below in Bold are 12 Hour **						Hours	Reporting Location
Resource Identifier	ALS	LWD	Leader	Personnel	Request #			
STA ORC 1401A	Y		SUMMERS, MICHAEL	20 +/-	E-25	0700-0700	ORC Station 14	
STC SHF 3675C			STILES, EZRA	18 +/-	E-29	0700-1900	ORC Station 14	
STC BDF 6608C			MUNOZ, MARK	18 +/-	E-30	0700-1900	ORC Station 14	
ENG3 CNF 320				4	E-100	0700-1900	ORC Station 14	
ENG3 CNF 322					E-101	0700-1900	ORC Station 14	
ENG3 CNF 323					E-102	0700-1900	ORC Station 14	
ENG3 CNF 325					E-103	0700-1900	ORC Station 14	
ENG3 CNF 327					E-104	0700-1900	ORC Station 14	
STG AEU 9275G			BOYCE, MICHAEL	33 +/-	C-28	0700-1900	EI Toro Helibase	
STG BDU 9352G			HYNES, STEVE	33 +/-	C-5	0700-1900	ORC Station 14	
CRW1 MILLCREEK IHC			ELLISON, JOHN	16 +/-	C-7	0700-1900	ORC Station 14	
CRW1 VISTA GRANDE IHC			PASCAL, BRETT	16 +/-	C-8	0700-1900	ORC Station 14	
CRW2IA+						0700-1900	ORC Station 14	
STL BEU 9467L			MUENZER, BRICE E		E-40	0700-1900	ORC Station 14	
WTF ANF 34			DANIEL, KELLY	2	E-31	0700-1900	ORC Station 14	
REMS 2 - XLF (LONG BEACH)			KOPFSTEIN, PAUL		O-172	0700-0700	ORC Station 14	

6. Work Assignments: STG 8HU 9241G ← HOPSON, JASON ↑ 27 unassigned
 Construct direct line. CRW1 SBC 1 ← Div B
 Hold and improve control lines to mitigate threat of fire escaping.
 Mop up 100' interior to eliminate threat to the fire line.

STH MMU 9425H ← unassigned BEERY, JONATHAN 24 C-30 0700-0700 ORC Station 14
 STH FKU 9435H ← unassigned FLEMING, ROBERT 23 C-29 0700-0700 ORC Station 14
 0700-0700 ORC Station 14

7. Special Instructions:
 STG AEU 9275G will be flown into their line assignment. Reporting location is the EI Toro Helibase.

8. Communications							
Name	Ch	Function	Rx Freq	Rx Tone	Tx Freq	Tx Tone	Notes
Fire OC	1	COMMAND	151.0100	123.0 (T2)	154.9650	123.0 (T2)	ALL DIVISIONS
CDF T31	6	TACTICAL	159.3825	192.8 (T16)	159.3825	192.8 (T16)	
CDF T23	14	AIR to GROUND	159.4500	192.8 (T16)	159.4500	192.8 (T16)	AIR TO GROUND
CALCORD	15	MEDICAL	156.0750	156.7(T6)	156.0750	156.7(T6)	MEDICAL
AIRGUARD	16	AIRGUARD	168.6250		168.6250	110.9 (T1)	***EMERGENCY ONLY***

9. Prepared by: Name: Gwyndolyn Ozard	RESL	Signature:
ICS 204	Date/Time: 12/4/2020 2200	Personnel Count: 160

ASSIGNMENT LIST (ICS 204 WF)

CONTROLLED UNCLASSIFIED
INFORMATION/BASIC

1. Incident Name: <p style="text-align: center; font-weight: bold;">Bond</p>	2. Operational Period: Date From: 12/05/20 Date To: 12/06/20 Time From: 0700 Time To: 0700	3. Branch Division <p style="text-align: center; font-size: 2em;">I E</p> <p style="text-align: center;">Page 1 of 1 Echo</p>
--	---	--

4. Operations Personnel:	
Operations Section Chief: Josh Bischof, Mike Petro (T)	Night Ops: Monty Smith
Branch Director: Tim Perkins	Branch Safety: Jason Ralls, Cameron Rossman (T)
Division/Group Supervisor: Nathan Arellano, T.J. McGovern	Air Attack: Doug Ross

5. Resources Assigned:		** Resources Below in Bold are 12 Hour **						
Resource Identifier	ALS	LWD	Leader	Personnel	Request #	Hours	Reporting Location	
STA ORC 1402A	Y		TRUHILL, JUSTIN	20 +/-	E-33	0700-0700	Sanitago Cyn x Modjeska Cyn	
STC MMU 9420C			JOHN	18 +/-	E-23	0700-0700	Sanitago Cyn x Modjeska Cyn	
STC FKU 9430C			HOGAN, SHAWN A	18 +/-	E-38	0700-0700	Sanitago Cyn x Modjeska Cyn	
STG SLU 9342G			HERRING, NATE	33 +/-	C-13	0700-1900	Sanitago Cyn x Modjeska Cyn	
STG FKU 9434G			CASTILLO, ROBERT	33 +/-	C-27	0700-1900	Sanitago Cyn x Modjeska Cyn	
STG BEU 9464G			BAILY, MARK	33 +/-	C-24	0700-1900	Sanitago Cyn x Modjeska Cyn	
W/T ORC 7					E-113	0700-1900	Sanitago Cyn x Modjeska Cyn	
W/T ORC 10			MATT		E-14	0700-1900	Sanitago Cyn x Modjeska Cyn	
STL MMU 9428L			FAIRBANKS, SHAUN		E-41	0700-0700	Sanitago Cyn x Modjeska Cyn	
DOZ ORC 1						0700-1900	Sanitago Cyn x Modjeska Cyn	
DOZ ORC 2					E-15	0700-1900	Sanitago Cyn x Modjeska Cyn	
DOZ ORC 3					E-16	0700-1900	Sanitago Cyn x Modjeska Cyn	
CRWZ SRV 7 ← unassigned			M. CARL	19		0700-1900	↓	
CRWZ DIA 42 ← unassigned			AROW, DRAKE	13		0900-1900	↓	
FEMP HARDING ← unassigned			HARDIN	2		0700-1900	↓	
KLAMATH H.S. CRW 21A ← unassigned				18		0700-1900	↓	
STG BRU 9315G ← unassigned			HATCH, JOE	28		0700-1900	↓	

6. Work Assignments:

Construct direct line from Harding Canyon Road to DIV Delta break.
 Hold fire within established control lines.
 Mop up 100' interior to eliminate threat to the fire line.
 Perform tactical patrol around structures for the potential of new starts.
 Mop up around structures to prevent structure damage, and alleviate citizen concerns.
 Identify and document suppression repair needs to facilitate timely completion of repairs.

7. Special Instructions:

8. Communications							
Name	Ch	Function	Rx Freq	Rx Tone	Tx Freq	Tx Tone	Notes
Fire OC	1	COMMAND	151.0100	123.0 (T2)	154.9650	123.0 (T2)	ALL DIVISIONS
CDF T34	7	TACTICAL	151.4675	192.8 (T16)	151.4675	192.8 (T16)	BRANCH I
CDF T23	14	AIR to GROUND	159.4500	192.8 (T16)	159.4500	192.8 (T16)	AIR TO GROUND
CALCORD	15	MEDICAL	156.0750	156.7(T6)	156.0750	156.7(T6)	MEDICAL
AIRGUARD	16	AIRGUARD	168.6250		168.6250	110.9 (T1)	***EMERGENCY ONLY***

9. Prepared by: Name: Gwyndolyn Ozard RESL


Signature:

AIR OPERATIONS SUMMARY ICS-220

Incident Name and Incident Number Bond Ca - ORC - 136890		Time Prepared 1700		Date Prepared Friday, December 4, 2020		Prepared By Greg Bradshaw	
General Remarks, Safety Notes, Hazards, Air Operations Special Equipment, etc. TRACK ALL DIPSITE LOCATIONS / NUMBER OF DIPS / GALLONS TAKEN. TRACK ALL DROP LOCATIONS / NUMBER OF DROPS / GALLONS DROPPED ALL GPS DATA TO BE COLLECTED IN DEGREES, MINUTES, DECIMAL MINUTES FORMAT. AVOID Aerial Application of Retardant / Foam / Agent within 300' of Waterways, Bodies of Water, etc. If Retardant / Foam / Agent is Dropped Within These Areas Immediately Notify the AOB and Provide the Following Information: Lat / Long, Estimated Number of Gallons and a Map Detailing The Area.		Shutdown 1709		Operational Period - Date Saturday, December 5, 2020		Operational Period - Time 0700 - 0700	
Helibase Information Name El Toro Latitude 33° 40.05 Longitude 117° 43.50		Helibase Information Request # A - 52 Radius: 6 NM Altitude: 7500' MSL Centerpoint: 33° 44.46' Lat 117° 37.03' Long NOTAMS: 0/0207 Frequency 123.7750 http://tfr.faa.gov/tfr2/list.html		TFR Information Name HC2 Phone (714) 522-4141 Make/Model Bell 412 EP Location Fullerton Request Procedure for These Aircraft: Contact Incident Comms See Medical Plan For Additional Info		Rescue Ship Information Day Night Name HC2 HC2 Phone (714) 522-4141 (714) 522-4141 Make/Model Bell 412 EP Bell 412 EP Location Fullerton Fullerton	
Frequencies		TX		POSITION		PHONE	
AIR TACTICS	RX 168.4000	TONE 168.4000	AM / FM FM	POSITION AOB	NAME Greg Bradshaw	PHONE (949) 887-2841	PHONE
AIR / AIR Rotary Wing	RX 123.7750	TONE 123.7750	AM AM	POSITION ASGS	NAME John Keesee	PHONE (949) 473-3265	
AIR / AIR - Briefing			AM AM	POSITION HEBM	NAME Rick Boman	PHONE (760) 473-7022	(626) 377-7406
AIR / GROUND - Command			FM FM	POSITION ATGS	NAME Doug Ross	PHONE (951) 288-5372	
AIR / GROUND (CDF T23)	RX 159.4000	TONE 192.8 (16)	FM FM	POSITION HLCO	NAME John Zuniga	PHONE (209) 304-3464	
COMMAND (FIREOC)	RX 151.0100	TONE 123.0 (2)	FM FM	POSITION HLCO	NAME Brad Corbin	PHONE (661) 965-8680	
TOLC	RX 123.0250	TONE 123.0250	AM AM				
DECK	RX 163.1000	TONE 163.1000	FM FM				
CALCORD - MEDICAL	RX 156.0750	TONE 156.7 (6)	FM FM				
AIRGAURD - Emergency Only	RX 168.6250	TONE 110.9 (1)	FM FM				
HELICOPTERS (Use page 2 if Needed)							
FAA #	Type	Make/Model	Helibase	Avail	Start	Remarks	
HC 1	2	Bell 412 EP	El Toro	800	800	A - 2 Std / Tank	
HC 2	2	Bell 412 EP	Fullerton	800	800	A - 1 Std / Tank	
68U	2	Sikorsky 58T	El Toro	800	800	A - 47 Rst / Bucket	
538	2	Bell 205 A1++	El Toro	800	800	A - 19 Std / Tank	
HT47	1	Chinook CH47	El Toro	800	800	A - 3 Rst / Tank	
1BH	1	Sikorsky UH 60	El Toro	800	800	A - 48 Rst / Bucket	
3BH	1	Sikorsky UH 60	El Toro	800	800	A - 25 Rst / Bucket	
8MG	3	ASTAR B3E	El Toro	800	800	A - 34 Recon	
3PD	3	ASTAR B3E	El Toro	800	800	A - 49 HLCO	
2BH	3	Bell 206L1	El Toro	800	800	A - 48 HLCO	
FIXED WING (Use Page 2 if Needed)							
FAA #	Type	Make/Model	Base	Avail	Start	Remarks	
MOBILE RETARDANT BASE INFORMATION							
Name	Latitude	Longitude	Manager	Manager Phone	Address		

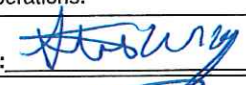

ICS 205 - INCIDENT RADIO COMMUNICATIONS PLAN

CONTROLLED UNCLASSIFIED
INFORMATION/BASIC

1. Incident Name: Bond BOND 1		2. Date/Time Prepared Date: 12/04/2020 Time: 2120		3. Operational Period: Date From: 12/05/20 Time From: 0700		Date To: 12/06/20 Time To: 0700		
4. Communications								
Ch#	Function	Name	Assigned To	Rx Freq	Rx Tone	Tx Freq	Tx Tone	Notes
1	COMMAND	Fire OC	ALL DIVS	151.0100	123.0 (T2)	154.9650	123.0 (T2)	ALL DIVISIONS
2								
3	TACTICAL	CDF T24	DIV B	151.3325	192.8 (T16)	151.3325	192.8 (T16)	BRANCH I
4	TACTICAL	CDF T25	DIV Y	159.2775	192.8 (T16)	159.2775	192.8 (T16)	BRANCH V
5	TACTICAL	CDF T31	DIV D	159.3825	192.8 (T16)	159.3825	192.8 (T16)	BRANCH I
6	TACTICAL	CDF T32	DIV T	151.2425	192.8 (T16)	151.2425	192.8 (T16)	BRANCH V
7	TACTICAL	CDF T34	DIV E	151.4675	192.8 (T16)	151.4675	192.8 (T16)	BRANCH I
8	TACTICAL	VFIRE 23	SUPP REPAIR	154.2950	156.7 (T6)	154.2950	156.7 (T6)	ALL DIVISIONS
9	TACTICAL	VFIRE 26	DIV M	154.3025	156.7 (T6)	154.3025	156.7 (T6)	BRANCH V
10								
11								
12								
13								
14	AIR to GROUND	CDF T23	ALL DIVS	159.4500	192.8 (T16)	159.4500	192.8 (T16)	AIR TO GROUND
15	MEDICAL	CALCORD	ALL DIVS	156.0750	156.7 (T6)	156.0750	156.7 (T6)	MEDICAL
16	AIRGUARD	AIRGUARD	ALL DIVS	168.6250		168.6250	110.9 (T1)	***EMERGENCY ONLY***
17								
18								
19								
20	AIRGUARD	AIRGUARD	ALL DIVS	168.6250		168.6250	110.9 (T1)	***EMERGENCY ONLY***
5. Special Instructions								
*** THE LATEST CLONE FOR DECEMBER 5, 2020 IS "BOND1" WHICH IS THE TITLE OF THE GROUP, MORNING BRIEFING BROADCAST ON CDF TAC 24, MCC								
6. Prepared by (Communications Unit Leader): Name: MIKE HEYFRON								Signature: 
ICS 205 - CONTROLLED UNCLASSIFIED INFORMATION/BASIC								Date/Time: 12/04/20 2120

NIMS IAP

MEDICAL PLAN (ICS 206)

1. Incident Name: <p style="text-align: center; margin-top: 5px;">Bond</p>		2. Operational Period: Date From: 12/5/20 Date To: 12/6/20 Time From: 0700 Time To: 0700					
3. Medical Aid Stations:							
Name	Location	Contact Number/Freq	Paramedics				
Care Ambulance X-Ray 1	Bond ICP	Command	<input type="checkbox"/> No				
4. Transportation (indicate air or ground):							
Ambulance Service	Location	Contact Number	Level of Service				
Care Ambulance X-Ray 2	Santiago x Jamboree	Command	BLS				
Care Ambulance X-Ray 3	19152 Santiago Canyon (Cook's Corner)	Command	BLS				
ORC Copter 1 (Hoist & NVG)	El Toro Helibase	Command	ALS				
5. Hospitals:							
Hospital Name	Address, Lat & Long Helipad	Contact Number(s)/ Frequency	Travel Time		Trauma Center	Burn Center	Helipad
			Air	Ground			
Mission Regional Medical Center	27700 Medical Center Rd Mission Viejo CA	949-365-2108	5	14	Level 2	<input type="checkbox"/>	<input checked="" type="checkbox"/>
UC Irvine Medical Center	101 The City Dr, Orange CA N33° 78.73 W 117° 88.83	714-456-6233	5	35	Level 2	<input checked="" type="checkbox"/>	<input checked="" type="checkbox"/>
OC Global Medical Center	1001 N.Tustin Ave Santa Ana CA N33° 45.30 W 117° 49.97	714-953-3331	10	20	Level 1	<input checked="" type="checkbox"/>	<input checked="" type="checkbox"/>
6. Special Medical Emergency Procedures							
Line Emergency Crew Supervisor will contact Division Supervisor with patient complaint/condition and location. - Division Group Supervisor Contacts: 1. Closest EMS resource 2. Communications Unit - Communications Unit Contacts: 1. Ground or Air ambulance as requested. 2. Operations 3. Safety 4. Medical Unit - Division Supervisor or designee will serve as point of contact and run medical emergency on assigned channel. 1. A pre-assigned tactical frequency (i.e. CALCORD) should be used for IWI and only for duration of the emergency. - Communications Unit will clear the Command channel for emergency traffic as needed for duration of the need.				Injury Reporting Procedures Nature of Injury: _____ Location of Patient: _____ Point of Contact: _____ Transportation Requested by: Air _____ Ground _____ Point of Pick-Up: _____ Lat: _____ Long: _____ Patient Unit ID: _____ Is an EMT with Patient: Yes _____ No _____ Age: _____ Sex: Male _____ Female _____			
Camp Emergency Contact Medical Unit with patient complaint/condition and location. Medical staff will respond to stabilize the patient. - Medical Unit contacts 1. Communications 2. Safety 3. Logistics 4. Operations 5. Crew Supervisor 6. Comp/Claims				All Emergencies - Secure the area and identified witnesses for later investigation. Keep accurate log of events.			
<input type="checkbox"/> Check box if aviation assets are utilized for rescue. If assets are used, coordinate with Air Operations.							
7. Prepared by (Medical Unit Leader):		Steve McGary		Signature: 			
8. Approved by (Safety Officer):		Doug Ferro		Signature: 			
ICS 206	NIMS IAP	Date/Time:	12/4/20	1900			



CAL-FIRE INCIDENT MANAGEMENT TEAM IV



24HR LINE RESOURCE - 2 OPERATOR

EMERGENCY SHIFT TICKET and EVALUATION FORM
The responsible Government Officer will complete this form each shift.

Incident or Project Name: MISSION
Request Number: E-444

Contractor Name: THE BEST DOZERS LLC
Operator #1: FIRST & LAST
Operator #2: FIRST & LAST

Equipment Make: 1999 PETERBILT 379
Equipment Model / Type: TRANSPORT 18 WHEEL
License Number: 12345A1

Serial Number: COMPLETE VIN#

Date Mo / Day	Start	Stop	Work	Hours	Days / Miles
9/5	0701	2400	17	10	DIV X
9/6	0001	0700	7	6	DIV X

Vendor Rating: Poor* Avg. Good Exc. N/A

Met Performance Expectations: Poor* Avg. Good Exc. N/A

Equipment in Safe Working Condition: **VENDOR RATING MUST BE DONE**

Operator Skill Level: **VENDOR RATING MUST BE DONE**

Operator's Cooperation Level: **VENDOR RATING MUST BE DONE**

Overall Performance: **VENDOR RATING MUST BE DONE**

Remarks/Comments: 2 OPERATORS

Govt. Rep. Name and Position - PRINT: _____

Print Your Name: _____

Govt. Rep. Signature: *Your Signature*

Contractor Signature: *Jatin Smith*

Date: 9/6/20 Time: 0700

* NOTE: any rating of POOR requires an explanation in Comment Section.
** Final evaluation or for more documentation, use a CALFIRE Form 230 or equivalent.

12HR LINE RESOURCE - 1 OPERATOR

EMERGENCY SHIFT TICKET and EVALUATION FORM
The responsible Government Officer will complete this form each shift.

Incident or Project Name: MISSION
Request Number: E-555

Contractor Name: THE BEST DOZERS LLC
Operator #1: FIRST & LAST
Operator #2: _____

Equipment Make: 2004 CAT
Equipment Model / Type: D6N / TYPE II E
License Number: COMPLETE VIN#

Serial Number: _____

Date Mo / Day	Start	Stop	Work	Hours	Days / Miles
9/7	0001	0700	7	7	OFF SHIFT
9/7	0701	1900	12	12	DIV X
9/7	1901	2400	5	5	OFF SHIFT

Vendor Rating: Poor* Avg. Good Exc. N/A

Met Performance Expectations: Poor* Avg. Good Exc. N/A

Equipment in Safe Working Condition: **VENDOR RATING MUST BE DONE**

Operator Skill Level: **VENDOR RATING MUST BE DONE**

Operator's Cooperation Level: **VENDOR RATING MUST BE DONE**

Overall Performance: **VENDOR RATING MUST BE DONE**

Remarks/Comments: 1 OPERATOR

Govt. Rep. Name and Position - PRINT: _____

Print Your Name: _____

Govt. Rep. Signature: *Your Signature*

Contractor Signature: *Jatin Smith*

Date: 9/5/20 Time: 1900

* NOTE: any rating of POOR requires an explanation in Comment Section.
** Final evaluation or for more documentation, use a CALFIRE Form 230 or equivalent.

24HR / 12HR TRANSITION SHIFT TICKET

EMERGENCY SHIFT TICKET and EVALUATION FORM
The responsible Government Officer will complete this form each shift.

Incident or Project Name: MISSION
Request Number: E-444

Contractor Name: THE BEST DOZERS LLC
Operator #1: FIRST & LAST
Operator #2: FIRST & LAST

Equipment Make: 1999 PETERBILT 379
Equipment Model / Type: TRANSPORT 18 WHEEL
License Number: 12345A1

Serial Number: COMPLETE VIN#

Date Mo / Day	Start	Stop	Work	Hours	Days / Miles
9/6	0701	1900	12	12	DIV X
9/6	1901	2400	5	5	OFF SHIFT

Vendor Rating: Poor* Avg. Good Exc. N/A

Met Performance Expectations: Poor* Avg. Good Exc. N/A

Equipment in Safe Working Condition: **VENDOR RATING MUST BE DONE**

Operator Skill Level: **VENDOR RATING MUST BE DONE**

Operator's Cooperation Level: **VENDOR RATING MUST BE DONE**

Overall Performance: **VENDOR RATING MUST BE DONE**

Remarks/Comments: 2 OPERATORS

Govt. Rep. Name and Position - PRINT: _____

Print Your Name: _____

Govt. Rep. Signature: *Your Signature*

Contractor Signature: *Jatin Smith*

Date: 9/5/20 Time: 1900

* NOTE: any rating of POOR requires an explanation in Comment Section.
** Final evaluation or for more documentation, use a CALFIRE Form 230 or equivalent.

24HR IN CAMP RESOURCE

EMERGENCY SHIFT TICKET and EVALUATION FORM
The responsible Government Officer will complete this form each shift.

Incident or Project Name: MISSION
Request Number: E-333

Contractor Name: THE BEST CAMP LLC
Operator #1: FIRST & LAST
Operator #2: _____

Equipment Make: TENT
Equipment Model / Type: WESTERN SHELTER 19X35
License Number: MMU-000015950

Serial Number: _____

Date Mo / Day	Start	Stop	Work	Hours	Days / Miles
9/2	0001	2400	24	24	ICP

Vendor Rating: Poor* Avg. Good Exc. N/A

Met Performance Expectations: Poor* Avg. Good Exc. N/A

Equipment in Safe Working Condition: **VENDOR RATING MUST BE DONE**

Operator Skill Level: **VENDOR RATING MUST BE DONE**

Operator's Cooperation Level: **VENDOR RATING MUST BE DONE**

Overall Performance: **VENDOR RATING MUST BE DONE**

Remarks/Comments: (4) TENTS, CANOPY WISIDES FLOOR & INSULATED ROOF 570sq ft

Govt. Rep. Name and Position - PRINT: _____

Print Your Name: _____

Govt. Rep. Signature: *Your Signature*

Contractor Signature: *Jatin Smith*

Date: 9/5/20 Time: 1900

* NOTE: any rating of POOR requires an explanation in Comment Section.
** Final evaluation or for more documentation, use a CALFIRE Form 230 or equivalent.



DMOB

BOND INCIDENT

CA-ORC-136890

- Resources must check-in prior to the Demobilization process.
 - In order to be deemed excess, supervisors must submit an ICS 213 to the Resources Unit.
 - Resources report to Demobilization Unit at the times posted on the tentative DMOB list, which is posted around the Incident Base and posted to the Box Account.
 - Prior to reporting to DMOB, please return all supplies and equipment.
 - Resources will get signatures from the following units:
 - Ground Support
 - Training (If they have a trainee)
 - Documentation
 - Time
 - DMOB
- The following will be done by radio at DMOB**
- Motels
 - Supply
 - Communications

TRAINING SPECIALIST MESSAGE

**A Training Specialist is available for trainees on
the incident.**

**All State, Federal and local government agency
Trainees working on Position Task Books will
need to register with the Incident Training
Specialist in order to receive proper credit for
your assignment.**

Training Specialist's

Dennis Martin

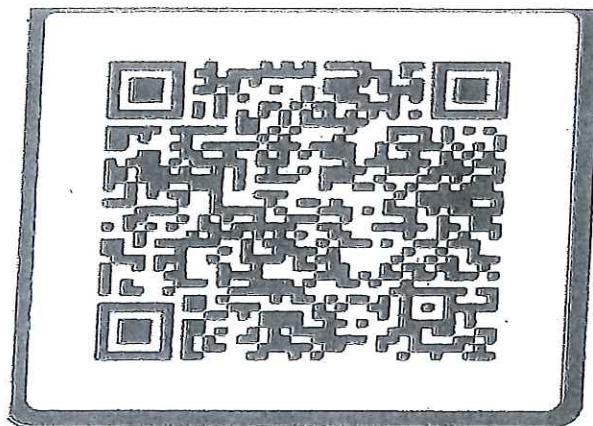
(707) 479-8421



Register using the QR Code

Trainee Message

If you would like to CHECK-OUT / CLOSE OUT your packet with the Training Specialist, please scan the QR code, fill in "ALL" information and "click" submit.



Your completed packet will be emailed back to you

If you have any questions or concerns, please feel free to contact me.

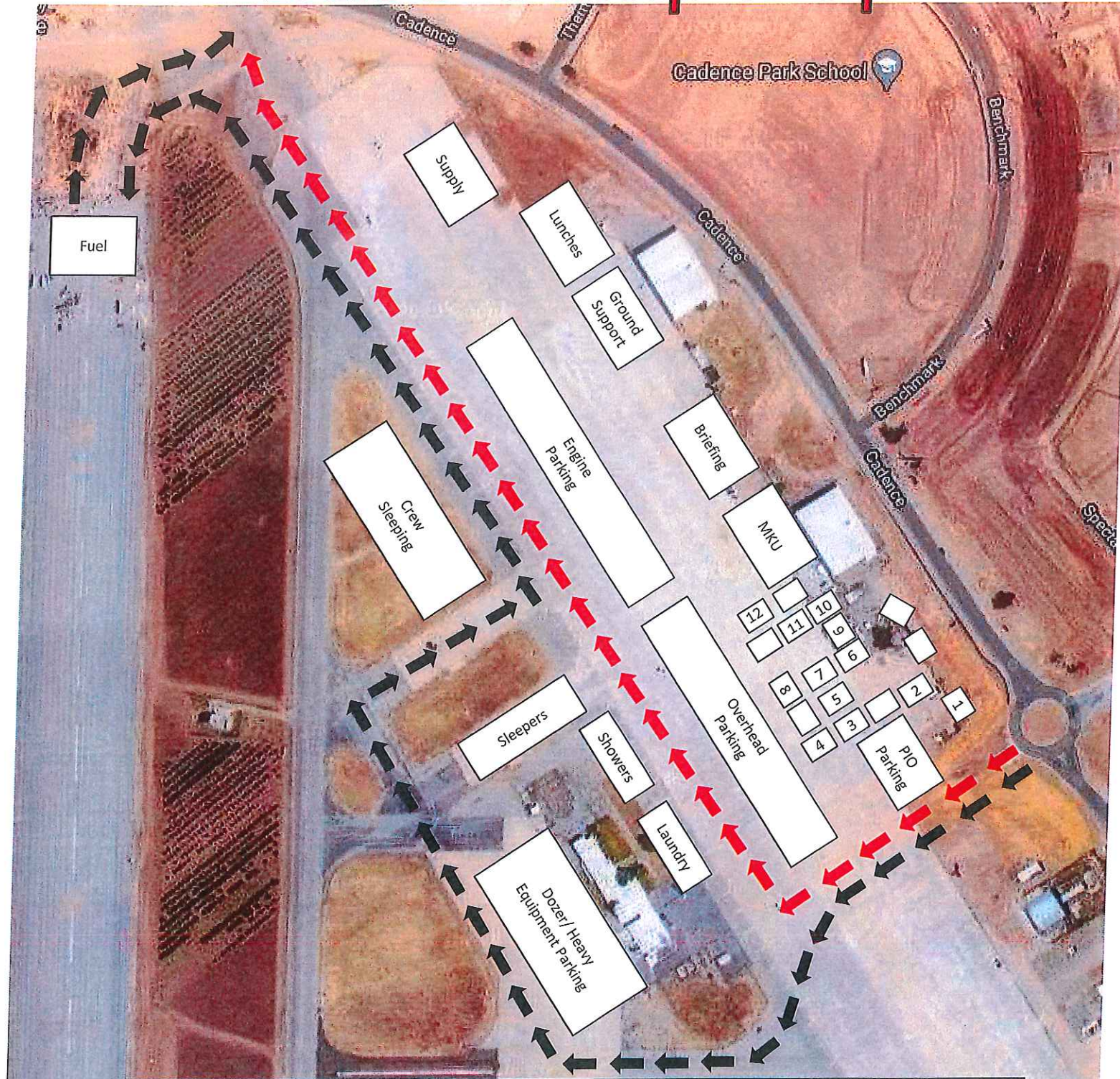
Training Specialist

Dennis Martin

(707) 479-8421

Dennis.martin@cityofvallejo.net

Bond Fire Base Camp Map



1	PIO	4	Check-in/ Demob	7	Clerical	10	Motels
2	Safety	5	Ordering	8	Cal Fire Training	11	Comp Claims/ Procurement
3	Liaison	6	Training	9	Situation Unit	12	Comms

This Page Intentionally Left Blank

