

# INCIDENT ACTION PLAN

## BOND INCIDENT

CA-ORC-136890

Saturday



### OPERATIONAL PERIOD

12/5/2020 0700  
to  
12/6/2020 0700



Briefing Frequency - CDF Tac 29



# INCIDENT OBJECTIVES (ICS 202)

<b>1. Incident Name:</b> <p style="text-align: center;">Bond</p>	<b>2. Operational Period:</b>	Date From: 12/5/2020 Time From: 0700	Date To: 12/6/2020 Time To: 0700
---	-------------------------------	---	-------------------------------------

**3. Objective(s):**

**Management Objectives**

- Provide for and maintain Public and First Responder safety by utilizing the incident safety analysis process.
- Ensure COVID-19 precautions and best practices are met at all times.
- Protect values at risk; including infrastructure, improvements, private and public lands, natural and cultural resources.
- Foster and maintain relationships with all cooperators and stakeholders.
- Ensure coordinated, timely and accurate release of public information.
- Be financially responsible for all management and fire suppression tactics.

**Control Objectives**

- Keep the fire North of Live Oak Road
- Keep the fire South of Black Star Canyon
- Keep the fire East of 241 Toll Road
- Keep the fire West of North Main Divide

**General Situational Awareness:**

Steep and rugged terrain, critically dry and receptive fuel beds, active area for fire history and drought stressed trees.

In the COVID-19 environment, high density populations or large groups are particularly at risk. To help protect yourself, your family, and to ensure all employees return home safely, make sure to practice social distancing.

Enhanced hygiene (especially handwashing), PPE & monitoring practices help limit the infection rate of first responders.

**5. Site Safety Plan Required?**      Yes  No

**Approved Site Safety Plan(s) Located at:**

**6. Incident Action Plan**

<input checked="" type="checkbox"/> ICS 203	<input checked="" type="checkbox"/> ICS 215A	<input type="checkbox"/> ICS 205 A	<input type="checkbox"/>
<input checked="" type="checkbox"/> ICS 204	<input checked="" type="checkbox"/> ICS 220	<input checked="" type="checkbox"/> Training Message	<input type="checkbox"/>
<input checked="" type="checkbox"/> ICS 205	<input checked="" type="checkbox"/> Facility Maps	<input type="checkbox"/> Travel Map	<input type="checkbox"/>
<input checked="" type="checkbox"/> ICS 206	<input checked="" type="checkbox"/> Weather Forecast	<input checked="" type="checkbox"/> Demob Plan	<input type="checkbox"/>
<input checked="" type="checkbox"/> ICS 208	<input checked="" type="checkbox"/> Fire Behavior	<input checked="" type="checkbox"/> Finance Message	<input checked="" type="checkbox"/> ICS 214

<b>7. Prepared By:</b> Dave Shy	Position/Title: PSC	Signature:
<b>8. Approved by Incident Commander:</b>	Eddy Moore	Signature:



## ORGANIZATION ASSIGNMENT LIST (ICS 203)

<b>1. Incident Name:</b> Bond		<b>2. Operational Period: Date From:</b> 12/5/2020		<b>Date To:</b> 12/6/2020	
		<b>Time From:</b> 0700		<b>Time To:</b> 0700	
<b>3. Incident Commander(s) and Command Staff:</b>			<b>7. Operation Section:</b>		
IC/UC's	Dave Russell, Ron Roberts, Scott Grismick, Joses Walehwa	Operations	Josh Bischof, Mike Petro (T)		
Deputy	Eddy Moore	Deputy Operations	Shane Laurderdale, Shawn Raley, Craig Covey (T)		
Safety Officer	Doug Ferro, Jack Piccinini, Bill Murphy(T)	Night Ops	Monty Smith		
Information Officer	Steve Kaufmann, Chris Harvey(T), Thanh Nguyen	Staging Area	Great Park	Gordan Levine	
Liaison Officer	Dave Pender, Mitch Villalpando, Rob Capobianco (T)	<b>Branch</b>	<b>I</b>	<b>Tim Perkins</b>	
LELO	Josh Allen, LT. Anthony Bertain	Division/Group	B	Chad Costa, Bill Murphy (T)	
		Division/Group	D	Hector Medrano (12) Ron Earls (T)	
Agency/Organization	Name	Division/Group	E	Nathan Arellano, T.J. McGovern	
OCFA	Kenny Dossey	Division/Group			
USFS	Darrell Vance	Division/Group			
OCSO	Mke Peters	<b>Branch</b>	<b>V</b>	<b>Loren Monsen</b>	
CALFIRE	Barry Owens	Division/Group	M	Todd Horton	
Care Ambulance	Jeremy Ruga	Division/Group	T	Shane Frederick	
OC Parks	Chris Lorenzi	Division/Group	Y	Matthew Levesque	
CHP	David Rodgers	Division/Group			
OC EOC	Kevin McArthur	Division/Group			
Caltrans	Ramone Torres	<b>Branch</b>	Suppression Repair	<b>Dave Erikson</b>	
SCE	Scott Brown	Division/Group			
Capstone	Terry Bowen	Division/Group			
IRWD	Bill Wesson	Division/Group			
Cal OES	Dave Stone	<b>Branch</b>			
		Division/Group			
<b>5. Planning Section:</b>			Division/Group		
Chief	Jason Martin, Kevin Fetterman (T)	Division/Group			
Deputy	Dave Shy, Gabe Garcia	Division/Group			
Resource Unit	Gwyndolyn Ozard, Nochella Funes, Brian Torosian (T) Dan Brown(T)	Division/Group			
Situation Unit	Denny O'Neil, Brandon Strohbehn, Brad Burns (T)	<b>Branch</b>			
Documentation Unit	Tamara Anderson (T)	Division/Group			
Demobilization Unit	Chris Lynch, Floyd Horn	Division/Group			
GISS	Dan Dresselhaus, Rebecca Kriha	Division/Group			
FBAN	Jonathan Pangburn	Division/Group			
IMET	Rich Thompson	Division/Group			
DINS	Nick Pivaroff	<b>Air Operations Branch</b>		<b>Director:</b>	<b>Greg Bradshaw</b>
		Air Support Group Supervisor		Jonathan Keesee, Ray Gomez (T)	
		Air Tactical Group Supervisor		Doug Ross	
<b>6. Logistics Section</b>			Helibase Manager	Rick Boman	
Chief	Matt Reich, Scott Ashbach				
Deputy	Mathew Brandt, Steve Dohman	<b>8. Finance/Administration Section:</b>			
Supply	Shon Burris, Mark Mollet	Chief	Mara Zaver, Roger Raines, Jim Ruane		
Facilities Unit	Matt Brown, Jason Wilson (T) Mathew Berger	Time Unit	Greg Tunzi		
Ordering Unit	Daniel Williams, Marc Cornelison	Procurement Unit	Courtney Arebalo		
Communications Unit	Mike Heyfron, Eric White	Comp/Claims Unit	Sean Bowe		
Medical Unit	Steve McGrady, Rob Reed	Cost Unit	Angela Davidson		
<b>Prepared By: Name:</b> David Shy		<b>Position/Title:</b> PSC	<b>Signature:</b> 		
<b>ICS 203</b>		<b>Date/Time:</b> 12/3/2020 2000 hours	<b>NIMS IAP</b>		

## **Fire and COVID-19 Briefing Checklist**

### **Self-Awareness / Screening**

- Immediately separate yourself from others.
- Notify supervisor if you or others experience:
  - Cough, more than expected
  - Shortness of breath or difficulty breathing
  - New loss of taste or smell
  - Fever
  - Chills
  - Sore throat
  - Muscle pain
- Review and follow crew and division plans to isolate, triage, and transport symptomatic personnel.

### **Hygiene on the Fireline**

- Properly wash or sanitize your hands often, especially before and after eating or entering a public place, and after coughing or sneezing.
- Avoid handshakes and communal use items.
- Maintain a supply of hand sanitizer and hand wipes. Inform supervisor of needed resupply.
- Disinfect high touch surfaces often:
  - Radios, phones, doors, pumps, fuel cans, etc.

### **Social Distancing and Protective Equipment**

- Initiate, practice, and remind others of social distancing.
- Conduct briefings and conversations outdoors and at least 6 feet apart.
- Utilize face coverings as a tool when practical.
- Clean or replace dirty face coverings, equipment, and PPE.

### **Communications**

- Face coverings and social distancing complicate communications. Ensure effective sender/receiver messaging.

### **Protect yourself, your crew, and your camp!**

Find more information: <https://www.nwccg.gov/coronavirus>.





# INCIDENT Weather Forecast



**FORECAST NO:** 2  
**PREDICTION FOR:** 24 hour SHIFT  
**SHIFT DATE:** 12/5/20 – 12/6/20 (0700-0700)  
**TIME AND DATE**  
**FORECAST ISSUED:** 12/4/20 @ 1915

**NAME OF FIRE:** Bond  
**UNIT:** OCFA, CalFire  
**SIGNED:**

  
 Rich Thompson  
 Incident Meteorologist

### WEATHER DISCUSSION:

Weak diurnal flow will prevail through the operational period with weak downslope/downvalley winds during the night and morning hours and weak upslope/upvalley winds in the afternoon and evening hours. Dry conditions will persist with minimum humidity in the single digits with little recovery overnight.

Near persistent conditions are expected on Sunday. On Monday and Tuesday, another round of Santa Ana winds is expected. Northeast winds, gusting 30 to 45 MPH, will combine with very low relative humidity to bring widespread critical fire weather conditions to the incident.

### WEATHER FORECAST:

**WEATHER:** Partly cloudy.

**TEMPERATURES:** Max: 66-72.  
Min: 48-56.

**HUMIDITY:** Min: 6-12%.  
Max: 15-25%.

**20 FT WINDS:**

**RIDGETOP -**

0700-1100: Northeast to east 5-10 MPH Gust 12-15 MPH.  
 1100-2000: West to northwest 5-10 MPH Gust 12-15 MPH.  
 2000-0700: Northeast to east 5-10 MPH Gust 12-15 MPH.

**SLOPE/VALLEY -**


0700-1000: Northeast to east 6-12 MPH Gust 15-20 MPH.  
 1000-1900: Southwest/upvalley 5-10 MPH Gust 12-15 MPH.  
 1900-0700: Downslope/downvalley 3-6 MPH Gust 10 MPH.

### EXTENDED FORECAST:

**Sunday:** Partly cloudy. High temperatures 66-72. Low temperatures 48-56. Minimum RH: 10-20%. Maximum RH: 20-35%. Weak northeasterly winds in the night/morning hours with weak southwest/onshore winds in the afternoon/evening hours

**Monday/Tuesday:** Partly cloudy. High temperatures 68-76. Low temperatures 50-58. Minimum RH: 8-15%. Maximum RH: 15-25%. Northeast winds 15-25 MPH with gusts 30-45 MPH.

## FIRE BEHAVIOR FORECAST

FORECAST NUMBER: 2	TYPE OF FIRE: Wildland Fire
FIRE NAME: Bond	OPERATIONAL PERIOD: 24hr 12/5 (0700-0700)
DATE ISSUED: 12/4/2020	TIME ISSUED: 1900
UNIT: ORC	SIGNED: Jonathan Pangburn, FBAN 

### INPUTS

#### WEATHER SUMMARY

**\*\*LOW RH; DIURNAL WIND PATTERN\*\***  
See Weather Forecast in IAP.

### OUTPUTS

#### GENERAL:

Critical live and dead fuel moisture. Low RH and lack of overnight recovery will maintain elevated spotting potential, especially in light flashy fuels to the west.

Potential remains for expansive growth due to fuel moisture and wind potential. BI & 1,000-hr dead fuels above 90<sup>th</sup> percentile. ERC above 97<sup>th</sup> percentile. 100-hr dead fuels at record low for this time of year. Any fire established outside of recent burn scars could see dangerous rates of spread.

With forecasted wind & weather conditions, expect:

	Max. Flame Length	Max. Rate of Spread	Spotting	Probability of Ignition
Grass	5' (1.5 m)	35 ch/hr (0.7 km/hr)	< 1/4 mile (.4 km)	70%
Grass/Shrub Mix	5' (1.5 m)	25 ch/hr (0.5 km/hr)	< 1/4 mile (.4 km)	70%
Shrub	15' (4.5 m)	40 ch/hr (0.8 km/hr)	< 1/4 mile (.4 km)	70%
Timber Understory	10' (3.0 m)	10 ch/hr (0.2 km/hr)	< 1/4 mile (.4 km)	70%
Timber Litter	2' (0.6 m)	5 ch/hr (0.1 km/hr)	< 1/4 mile (.4 km)	70%

**\*\*minimum safety zone size for shrub is 1/2-acre (0.2 Ha) for a Strike Team of Engines.**

**\*\*minimum safety zone size for timber understory is 1/3-acre (0.1 Ha) for a Strike Team of Engines.**

**\*\*minimum safety zone size for grass is 1/4-acre (0.1 Ha) for a Strike Team of Engines.**

#### SPECIFIC:

**DIV B / D / E:** Heavier shrub fuels will carry fire with daytime onshore flow. Expect slope-driven fire, moving into older fuels. This has potential to spread fire around fire scar with nighttime downslope wind.

**DIV M:** Watch for wind alignment with heavier fuels outside the burn scar. Fire could align toward Lake Forest. Spotting potential with wind-driven fire.

**DIV T:** Grass fuels with shrub intermix and oak canopy. Flashy fuels with spotting potential.

**DIV Y:** Watch for wind alignment into Silverado Canyon. WUI residences, with heavier fuel loading to the north.

#### AIR OPERATIONS:

Mostly clear.

Mixing height: 3,500 ft. AGL. Transport winds: NE 5-10 morning; SW 5-10 afternoon.

Sunrise 0641, Sunset 1642.

### SAFETY

Escape routes: In flashy fuels with gusty winds, your escape route should be one foot in the burn.

Fire in drainages can dislodge rolling objects and firebrands.





# SAFETY MESSAGE

## Bond Fire

CA-ORC-20-136890 December 5, 2020 0700-0700



S  
A  
F  
E  
T  
Y

### ACCOUNTABILITY

#### Watch Out

- Multiple resources from outside the operational area
- Challenging terrain can limit clear communications

#### Mitigation

- Know who you are working for, when and where
- Maintain good communications with your supervisor and adjoining forces

### ROAD HAZARDS

#### Watch Out

- Utility crews working on and near roads
- Residents driving in all areas, some on UTV's

#### Mitigation

- Slow down, maintain a safe distance, allow for extra travel time
- Turn on emergency lights for your safety when parked
- Utilize cones for added traffic awareness

### COMPLACENCY

#### Watch Out

- Coming to the end of a very long fire season
- Tired crews have worked more this year than ever before

#### Mitigation

- Proper nutrition, rest and hydration reduces fatigue and exhaustion emergencies
- Maintain a safe work/rest ratio

### COVID-19

#### REDUCE THE EXPOSURE AND SPREAD BY:

- **Wear a face covering when:**
  - ✓ In public and unable to maintain six feet of social distance
  - ✓ When at the ICP and unable to maintain six feet social distance
  - ✓ At all times when you are in the food line

*Jason Williams*

**CAL FIRE IMT TEAM 4 SAFETY**

E  
V  
E  
R  
Y  
O  
N  
E  
S  
R  
E  
S  
P  
O  
N  
S  
I  
B  
I  
L  
I  
T  
Y

S  
A  
F  
E  
T  
Y

S  
A  
F  
E  
T  
Y



REDUCE EXPOSURE BY WEARING A FACE COVERING





# INCIDENT ACTION PLAN SAFETY ANALYSIS (ICS 215A)



<b>1. Incident Name:</b> Bond		<b>2. Incident Number:</b> CA-ORCC-136890	
<b>3. Date/Time Prepared:</b> Date: 12/04/2020 Time: 1700		<b>4. Operational Period:</b> Date From: 12/05/2020 To: 12/06/2020 Time From: 0700 hours To: 0700 hours	
<b>5. Incident Area</b>	<b>6. Hazards/Risks</b>	<b>7. Mitigations</b>	
ALL	Potential Extreme Fire Behavior due to winds, Fuel and Terrain	Watch for alignment conditions and spotting; Fire is in steep terrain which can cause increased rates of spread	
ALL	COVID-19: Reduce exposure potential to yourself, your crew, and the public	Wear a mask while in the ICP, while feeding and with the public, and when six feet of social distancing is difficult. Wash hands for at least 20-seconds.	
DIV B, Y	Narrow roadways	Turn lights on, observe speed limits and expect vehicles opposing traffic. Plan for extended travel times.	
DIV B, D, E, M, Y	Working around heavy equipment	Maintain eye-to-eye contact with the operator. Have fire suppression support when operating in dry fuels.	
DIV B, Y	Poor communications	Review ICS 205 and ensure radio clone is current.	
DIV B, D, E, M, Y	Steep, unstable terrain and Roll-Out	Watch footing and maintain downhill tool placement. Be aware of loose material. Look for ash pits and stump holes.	
ALL	Helicopters - Water Drops and Turbulence	Post lookouts and make escape routes and safety zones known. Monitor A/G. Watch overhead for hazard trees and wind changes.	
DIV D, E, M	Firing operations may occur within these divisions if conditions warrant	Plan out all operations; follow the GO/NO GO checklist	
ALL	Private Fire Insurance Engines within the fire area	Be aware of their locations when possible.	
ALL	Driving Hazards	DRIVE SLOW- do a walk around before moving your vehicle; Drive with headlights on; drive defensively; Utilize spotters and backers when conditions require; scout out assignments before committing position.	
DIV B, D, E, M, Y	Heavy Equipment	Watch for rolling material; Monitor safe working distances. <b>Avoid</b> working below dozer. Utilize communication with the operator (radio or hand signals).	
ALL	Tired Crews - End of a very long fire season	Maintain a safe work/rest ratio, stay well fed and hydrated.	
<b>8. Prepared by (Safety Officer):</b> Name: Jason Williams		Signature: 	
<b>Prepared by (Deputy Operations Section Chief):</b> Name: Josh Bischof		Signature: 	
<b>ICS 215A</b>		Date/Time: 12/04/2020 1700hrs	





# ASSIGNMENT LIST (ICS 204 WF)

CONTROLLED UNCLASSIFIED  
INFORMATION//BASIC

<b>1. Incident Name:</b> <p style="text-align: center;"><b>Bond</b></p>	<b>2. Operational Period:</b> Date From: 12/05/20    Date To: 12/06/20 Time From: 0700    Time To: 0700	<b>3. Branch</b> <b>Division</b> <p style="text-align: center;"><b>I</b>                      <b>D</b></p> <p style="text-align: center;">Page 1 of 1              Delta</p>
--	---	---

<b>4. Operations Personnel:</b>	
Operations Section Chief: <b>Josh Bischof, Mike Petro (T)</b>	Night Ops: <b>Monty Smith</b>
Branch Director: <b>Tim Perkins</b>	Branch Safety: <b>Jason Ralls, Cameron Rossman (T)</b>
Division/Group Supervisor: <b>Hector Medrano (12) Ron Earls (T)</b>	Air Attack: <b>Doug Ross</b>

<b>5. Resources Assigned:</b>		<b>** Resources Below in Bold are 12 Hour **</b>					
Resource Identifier	ALS	LWD	Leader	Personnel	Request #	Hours	Reporting Location
STA ORC 1401A	Y		SUMMERS, MICHAEL	20 +/-	E-25	0700-0700	ORC Station 14
<b>STC SHF 3675C</b>			<b>STILES, EZRA</b>	18 +/-	<b>E-29</b>	<b>0700-1900</b>	<b>ORC Station 14</b>
<b>STC BDF 6608C</b>			<b>MUNOZ, MARK</b>	18 +/-	<b>E-30</b>	<b>0700-1900</b>	<b>ORC Station 14</b>
ENG3 CNF 320				4	E-100	0700-1900	ORC Station 14
ENG3 CNF 322					E-101	0700-1900	ORC Station 14
ENG3 CNF 323					E-102	0700-1900	ORC Station 14
ENG3 CNF 325					E-103	0700-1900	ORC Station 14
ENG3 CNF 327					E-104	0700-1900	ORC Station 14
STG AEU 9275G			<b>BOYCE, MICHAEL</b>	33 +/-	<b>C-28</b>	<b>0700-1900</b>	<b>EI Toro Helibase</b>
STG BDU 9352G			<b>HYNES, STEVE</b>	33 +/-	<b>C-5</b>	<b>0700-1900</b>	<b>ORC Station 14</b>
CRW1 MILLCREEK IHC			<b>ELLISON, JOHN</b>	16 +/-	<b>C-7</b>	<b>0700-1900</b>	<b>ORC Station 14</b>
CRW1 VISTA GRANDE IHC			<b>PASCALE, BRETT</b>	16 +/-	<b>C-8</b>	<b>0700-1900</b>	<b>ORC Station 14</b>
CRW2IA+						0700-1900	ORC Station 14
STL BEU 9467L			<b>MUENZER, BRICE E</b>		E-40	0700-1900	ORC Station 14
W/T ANF 34			<b>DANIEL, KELLY</b>	2	E-31	0700-1900	ORC Station 14
REMS 2 - XLF (LONG BEACH)			<b>KOPFSTEIN, PAUL</b>		O-172	0700-0700	ORC Station 14

**6. Work Assignments:**  
 Construct direct line.  
 Hold and improve control lines to mitigate threat of fire escaping.  
 Mop up 100' interior to eliminate threat to the fire line.

**7. Special Instructions:**  
 STG AEU 9275G will be flown into their line assignment. Reporting location is the EI Toro Helibase.

<b>8. Communications</b>							
Name	Ch	Function	Rx Freq	Rx Tone	Tx Freq	Tx Tone	Notes
Fire OC	1	COMMAND	151.0100	123.0 (T2)	154.9650	123.0 (T2)	ALL DIVISIONS
CDF T31	6	TACTICAL	159.3825	192.8 (T16)	159.3825	192.8 (T16)	
CDF T23	14	AIR to GROUND	159.4500	192.8 (T16)	159.4500	192.8 (T16)	AIR TO GROUND
CALCORD	15	MEDICAL	156.0750	156.7(T6)	156.0750	156.7(T6)	MEDICAL
AIRGUARD	16	AIRGUARD	168.6250		168.6250	110.9 (T1)	***EMERGENCY ONLY***

<b>9. Prepared by: Name:</b> Gwyndolyn Ozard	RESL	Signature:
ICS 204	Date/Time: 12/4/2020 2200	Personnel Count: 160

# ASSIGNMENT LIST (ICS 204 WF)

CONTROLLED UNCLASSIFIED  
INFORMATION//BASIC

<b>1. Incident Name:</b> <p style="text-align: center;"><b>Bond</b></p>	<b>2. Operational Period:</b> Date From: 12/05/20    Date To: 12/06/20 Time From: 0700    Time To: 0700	<b>3. Branch</b> <b>Division</b> <p style="text-align: center;"><b>I</b>                      <b>E</b></p>
--	---	---

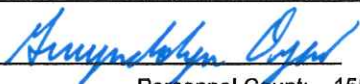
<b>4. Operations Personnel:</b>		Page 1 of 1	Echo
Operations Section Chief: <b>Josh Bischof, Mike Petro (T)</b>	Night Ops: <b>Monty Smith</b>		
Branch Director: <b>Tim Perkins</b>	Branch Safety: <b>Jason Ralls, Cameron Rossman (T)</b>		
Division/Group Supervisor: <b>Nathan Arellano, T.J. McGovern</b>	Air Attack: <b>Doug Ross</b>		

<b>5. Resources Assigned:</b>		** Resources Below in Bold are 12 Hour **					
Resource Identifier	ALS	LWD	Leader	Personnel	Request #	Hours	Reporting Location
STA ORC 1402A	Y		TRUHILL, JUSTIN	20 +/-	E-33	0700-0700	Sanitago Cyn x Modjeska Cyn
STC MMU 9420C				18 +/-	E-23	0700-0700	Sanitago Cyn x Modjeska Cyn
STC FKU 9430C			HOGAN, SHAWN A	18 +/-	E-38	0700-0700	Sanitago Cyn x Modjeska Cyn
<b>STG SLU 9342G</b>			<b>HERRING, NATE</b>	<b>33 +/-</b>	<b>C-13</b>	<b>0700-1900</b>	Sanitago Cyn x Modjeska Cyn
<b>STG FKU 9434G</b>			<b>CASTILLO, ROBERT</b>	<b>33 +/-</b>	<b>C-27</b>	<b>0700-1900</b>	Sanitago Cyn x Modjeska Cyn
<b>STG BEU 9464G</b>				<b>33 +/-</b>	<b>C-24</b>	<b>0700-1900</b>	Sanitago Cyn x Modjeska Cyn
W/T ORC 7					<b>E-113</b>	<b>0700-1900</b>	Sanitago Cyn x Modjeska Cyn
W/T ORC 10					<b>E-14</b>	<b>0700-1900</b>	Sanitago Cyn x Modjeska Cyn
STL MMU 9428L			FAIRBANKS, SHAUN		E-41	0700-0700	Sanitago Cyn x Modjeska Cyn
<b>DOZ ORC 1</b>						<b>0700-1900</b>	Sanitago Cyn x Modjeska Cyn
<b>DOZ ORC 2</b>					<b>E-15</b>	<b>0700-1900</b>	Sanitago Cyn x Modjeska Cyn
<b>DOZ ORC 3</b>					<b>E-16</b>	<b>0700-1900</b>	Sanitago Cyn x Modjeska Cyn

**6. Work Assignments:**  
 Construct direct line from Harding Canyon Road to DIV Delta break.  
 Hold fire within established control lines.  
 Mop up 100' interior to eliminate threat to the fire line.  
 Perform tactical patrol around structures for the potential of new starts.  
 Mop up around structures to prevent structure damage, and alleviate citizen concerns.  
 Identify and document suppression repair needs to facilitate timely completion of repairs.

**7. Special Instructions:**

<b>8. Communications</b>							
Name	Ch	Function	Rx Freq	Rx Tone	Tx Freq	Tx Tone	Notes
Fire OC	1	COMMAND	151.0100	123.0 (T2)	154.9650	123.0 (T2)	ALL DIVISIONS
CDF T34	7	TACTICAL	151.4675	192.8 (T16)	151.4675	192.8 (T16)	BRANCH I
CDF T23	14	AIR to GROUND	159.4500	192.8 (T16)	159.4500	192.8 (T16)	AIR TO GROUND
CALCORD	15	MEDICAL	156.0750	156.7(T6)	156.0750	156.7(T6)	MEDICAL
AIRGUARD	16	AIRGUARD	168.6250		168.6250	110.9 (T1)	***EMERGENCY ONLY***

**9. Prepared by: Name:** Gwyndolyn Ozard                      RESL  
 Signature:   
**ICS 204**                      Date/Time: 12/4/2020 2200                      Personnel Count: 155





# ASSIGNMENT LIST (ICS 204 WF)

CONTROLLED UNCLASSIFIED  
INFORMATION//BASIC

<b>1. Incident Name:</b> <p style="text-align: center;"><b>Bond</b></p>	<b>2. Operational Period:</b> Date From: 12/05/20    Date To: 12/06/20 Time From: 0700        Time To: 0700	<b>3. Branch</b> <b>Division</b> <p style="text-align: center;"><b>V</b>                                      <b>T</b></p> <p style="text-align: center;">Page 1 of 1                      <b>Tango</b></p>
--	---	--

<b>4. Operations Personnel:</b>	
Operations Section Chief: <b>Josh Bischof, Mike Petro (T)</b>	Night Ops: <b>Monty Smith</b>
Branch Director: <b>Loren Monsen</b>	Branch Safety: <b>Mike Klusyk, Sean Lowry (T)</b>
Division/Group Supervisor: <b>Shane Frederick</b>	Air Attack: <b>Doug Ross</b>

<b>5. Resources Assigned:</b>							
Resource Identifier	ALS	LWD	Leader	Personnel	Request #	Hours	Reporting Location
STA XOR 1423A			WEINERT, API A	20 +/-	E-35	0700-0700	Irvine Lake Parking Lot
STC TUU 9410C			WIGHT, JON	18 +/-	E-178	0700-0700	Irvine Lake Parking Lot
STG SLU 9346G (CCC)				33 +/-	C-2	0700-0700	Irvine Lake Parking Lot
<b>W/T ORC 4</b>			<b>YUKURA, CHRIS</b>	<b>2</b>	<b>E-112</b>	<b>0700-1900</b>	<b>Irvine Lake Parking Lot</b>

**6. Work Assignments:**  
 Hold and improve control lines to mitigate threat of fire escaping.  
 Mop up 300' interior to eliminate threat to the fire line.  
 Backhaul excess trash/hose/water.

**7. Special Instructions:**

<b>8. Communications</b>							
Name	Ch	Function	Rx Freq	Rx Tone	Tx Freq	Tx Tone	Notes
Fire OC	1	COMMAND	151.0100	123.0 (T2)	154.9650	123.0 (T2)	ALL DIVISIONS
CDF T32	4	TACTICAL	151.2425	192.8 (T16)	151.2425	192.8 (T16)	BRANCH V
CDF T23	14	AIR to GROUND	159.4500	192.8 (T16)	159.4500	192.8 (T16)	AIR TO GROUND
CALCORD	15	MEDICAL	156.0750	156.7(T6)	156.0750	156.7(T6)	MEDICAL
AIRGUARD	16	AIRGUARD	168.6250		168.6250	110.9 (T1)	***EMERGENCY ONLY***

**9. Prepared by: Name:** Gwyndolyn Ozard                      RESL                      Signature: 

ICS 204                      Date/Time: 12/5/2020 0700                      Personnel Count: 73


















# ICS 205 - INCIDENT RADIO COMMUNICATIONS PLAN

CONTROLLED UNCLASSIFIED  
INFORMATION//BASIC

<b>1. Incident Name:</b> Bond BOND 1		<b>2. Date/Time Prepared</b> Date: 12/04/2020 Time: 2120		<b>3. Operational Period:</b> Date From: 12/05/20 Time From: 0700 Date To: 12/06/20 Time To: 0700				
<b>4. Communications</b>								
Ch#	Function	Name	Assigned To	Rx Freq	Rx Tone	Tx Freq	Tx Tone	Notes
1	COMMAND	Fire OC	ALL DIVS	151.0100	123.0 (T2)	154.9650	123.0 (T2)	ALL DIVISIONS
2								
3	TACTICAL	CDF T24	DIV B	151.3325	192.8 (T16)	151.3325	192.8 (T16)	BRANCH I
4	TACTICAL	CDF T25	DIV Y	159.2775	192.8 (T16)	159.2775	192.8 (T16)	BRANCH V
5	TACTICAL	CDF T31	DIV D	159.3825	192.8 (T16)	159.3825	192.8 (T16)	BRANCH I
6	TACTICAL	CDF T32	DIV T	151.2425	192.8 (T16)	151.2425	192.8 (T16)	BRANCH V
7	TACTICAL	CDF T34	DIV E	151.4675	192.8 (T16)	151.4675	192.8 (T16)	BRANCH I
8	TACTICAL	VFIRE 23	SUPP REPAIR	154.2950	156.7 (T6)	154.2950	156.7 (T6)	ALL DIVISIONS
9	TACTICAL	VFIRE 26	DIV M	154.3025	156.7 (T6)	154.3025	156.7 (T6)	BRANCH V
10								
11								
12								
13								
14	AIR to GROUND	CDF T23	ALL DIVS	159.4500	192.8 (T16)	159.4500	192.8 (T16)	AIR TO GROUND
15	MEDICAL	CALCORD	ALL DIVS	156.0750	156.7 (T6)	156.0750	156.7 (T6)	MEDICAL
16	AIRGUARD	AIRGUARD	ALL DIVS	168.6250		168.6250	110.9 (T1)	***EMERGENCY ONLY***
17								
18								
19								
20	AIRGUARD	AIRGUARD	ALL DIVS	168.6250		168.6250	110.9 (T1)	***EMERGENCY ONLY***
<b>5. Special Instructions</b>						*** THE LATEST CLONE FOR DECEMBER 5, 2020 IS "BOND1" WHICH IS THE TITLE OF THE GROUP, MORNING BREIFING BROADCAST ON CDF TAC 24, MCC		
<b>6. Prepared by (Communications Unit Leader): Name: MIKE HEYFRON</b>						Signature: 		
<b>ICS 205 - CONTROLLED UNCLASSIFIED INFORMATION//BASIC</b>						Date/Time: 12/04/20 2120		

## MEDICAL PLAN (ICS 206)

<b>1. Incident Name:</b> <p style="text-align: center; margin-top: 5px;">Bond</p>		<b>2. Operational Period:</b>					
		Date From: 12/5/20	Date To: 12/6/20				
		Time From: 0700	Time To: 0700				
<b>3. Medical Aid Stations:</b>							
Name	Location	Contact Number/Freq	Paramedics				
Care Ambulance X-Ray 1	Bond ICP	Command	<input type="checkbox"/> No				
<b>4. Transportation (indicate air or ground):</b>							
Ambulance Service	Location	Contact Number	Level of Service				
Care Ambulance X-Ray 2	Santiago x Jamboree	Command	BLS				
Care Ambulance X-Ray 3	19152 Santiago Canyon (Cook's Corner)	Command	BLS				
ORC Copter 1 (Hoist & NVG)	El Toro Helibase	Command	ALS				
<b>5. Hospitals:</b>							
Hospital Name	Address,	Contact Number(s)/ Frequency	Travel Time		Trauma Center	Burn Center	Helipad
	Lat & Long		Air	Ground			
Mission Regional Medical Center	27700 Medical Center Rd Mission Viejo CA	949-365-2108	5	14	Level 2	<input type="checkbox"/>	<input checked="" type="checkbox"/>
UC Irvine Medical Center	101 The City Dr, Orange CA N33' 78.73 W 117' 88.83	714-456-6233	5	35	Level 2	<input checked="" type="checkbox"/>	<input checked="" type="checkbox"/>
OC Global Medical Center	1001 N. Tustin Ave Santa Ana CA N33' 45.30 W 117' 49.97	714-953-3331	10	20	Level 1	<input checked="" type="checkbox"/>	<input checked="" type="checkbox"/>
<b>6. Special Medical Emergency Procedures</b>							
<b>Line Emergency</b> Crew Supervisor will contact Division Supervisor with patient complaint/condition and location. - Division Group Supervisor Contacts: 1. Closest EMS resource 2. Communications Unit - Communications Unit Contacts: 1. Ground or Air ambulance as requested. 2. Operations 3. Safety 4. Medical Unit - Division Supervisor or designee will serve as point of contact and run medical emergency on assigned channel. 1. A pre-assigned tactical frequency (i.e. CALCORD) should be used for IWI and only for duration of the emergency. - Communications Unit will clear the Command channel for emergency traffic as needed for duration of the need.				<b>Injury Reporting Procedures</b>  Nature of Injury: _____ Location of Patient: _____ Point of Contact: _____ Transportation Requested by: Air _____ Ground _____ Point of Pick-Up: _____ Lat: _____ Long: _____ Patient Unit ID: _____ Is an EMT with Patient: Yes _____ No _____ Age: _____ Sex: Male _____ Female _____			
<b>Camp Emergency</b> Contact Medical Unit with patient complaint/condition and location. Medical staff will respond to stabilize the patient. - Medical Unit contacts 1. Communications 2. Safety 3. Logistics 4. Operations 5. Crew Supervisor 6. Comp/Claims				<b>All Emergencies - Secure the area and identified witnesses for later investigation. Keep accurate log of events.</b>			
<input type="checkbox"/> Check box if aviation assets are utilized for rescue. If assets are used, coordinate with Air Operations.							
<b>7. Prepared by (Medical Unit Leader):</b>		Steve McGary		Signature: 			
<b>8. Approved by (Safety Officer):</b>		Doug Ferro		Signature: 			
ICS 206	NIMS IAP	Date/Time:	12/4/20	1900			





# CAL-FIRE INCIDENT MANAGEMENT TEAM IV



## 24HR LINE RESOURCE - 2 OPERATOR

**EMERGENCY SHIFT TICKET and EVALUATION FORM**  
The responsible Government Officer will complete this form each shift.

Contractor Name: **THE BEST DOZERS LLC**  
Operator #1: **FIRST & LAST**  
Operator #2: **FIRST & LAST**  
Operator Furnished By:  Contractor  Government

Incident or Project Name: **MISSION**  
Incident Number: **CA-MMU-018115**  
Request Number: **E-444**

Agreement Number: **MMU-0000015953**

Equipment Make: **1999 PETERBILT 379**  
Equipment Model / Type: **TRANSPORT 18 WHEEL**  
License Number: **12345A1**

Serial Number: **COMPLETE VIN#**

Date Mo / Day	Start	Stop	Work	Hours	Days / Miles
9/5	0701	2400	17	7	DIV X
9/6	0001	0700	7	7	DIV X

Equipment Use (Circle):  Under Agreement  
 Released by Government  
 Withdrawn by Contractor

Remarks/Comments: **2 OPERATORS**

Vendor Rating: **VENDOR RATING MUST BE DONE**

Govt. Rep. Name and Position - PRINT: **Print Your Name**  
Govt. Rep. Signature: *Your Signature*  
Contractor Signature: *Jafin Smith*  
Date: **9/6/20** Time: **0700**

\* NOTE: any rating of POOR requires an explanation in Comment Section.  
 \*\* Final evaluation or for more documentation, use a CALFIRE Form 230 or equivalent.

## 12HR LINE RESOURCE - 1 OPERATOR

**EMERGENCY SHIFT TICKET and EVALUATION FORM**  
The responsible Government Officer will complete this form each shift.

Contractor Name: **THE BEST DOZERS LLC**  
Operator #1: **FIRST & LAST**  
Operator #2: **FIRST & LAST**  
Operator Furnished By:  Contractor  Government

Incident or Project Name: **MISSION**  
Incident Number: **CA-MMU-018115**  
Request Number: **E-555**

Agreement Number: **MMU-0000015955**

Equipment Make: **2004 CAT**  
Equipment Model / Type: **D6N / TYPE II E**  
License Number: **COMPLETE VIN#**

Serial Number: **COMPLETE VIN#**

Date Mo / Day	Start	Stop	Work	Hours	Days / Miles
9/7	0001	0700	7	7	OFF SHIFT
9/7	0701	1900	12	12	DIV X
9/7	1901	2400	5	5	OFF SHIFT

Equipment Use (Circle):  Under Agreement  
 Released by Government  
 Withdrawn by Contractor

Remarks/Comments: **1 OPERATOR**

Vendor Rating: **VENDOR RATING MUST BE DONE**

Govt. Rep. Name and Position - PRINT: **Print Your Name**  
Govt. Rep. Signature: *Your Signature*  
Contractor Signature: *Jafin Smith*  
Date: **9/5/20** Time: **1900**

\* NOTE: any rating of POOR requires an explanation in Comment Section.  
 \*\* Final evaluation or for more documentation, use a CALFIRE Form 230 or equivalent.

## 24HR / 12HR TRANSITION SHIFT TICKET

**EMERGENCY SHIFT TICKET and EVALUATION FORM**  
The responsible Government Officer will complete this form each shift.

Contractor Name: **THE BEST DOZERS LLC**  
Operator #1: **FIRST & LAST**  
Operator #2: **FIRST & LAST**  
Operator Furnished By:  Contractor  Government

Incident or Project Name: **MISSION**  
Incident Number: **CA-MMU-018115**  
Request Number: **E-444**

Agreement Number: **MMU-0000015953**

Equipment Make: **1999 PETERBILT 379**  
Equipment Model / Type: **TRANSPORT 18 WHEEL**  
License Number: **12345A1**

Serial Number: **COMPLETE VIN#**

Date Mo / Day	Start	Stop	Work	Hours	Days / Miles
9/6	0701	1900	12	12	DIV X
9/6	1901	2400	5	5	OFF SHIFT

Equipment Use (Circle):  Under Agreement  
 Released by Government  
 Withdrawn by Contractor

Remarks/Comments: **2 OPERATORS**

Vendor Rating: **VENDOR RATING MUST BE DONE**

Govt. Rep. Name and Position - PRINT: **Print Your Name**  
Govt. Rep. Signature: *Your Signature*  
Contractor Signature: *Jafin Smith*  
Date: **9/5/20** Time: **1900**

\* NOTE: any rating of POOR requires an explanation in Comment Section.  
 \*\* Final evaluation or for more documentation, use a CALFIRE Form 230 or equivalent.

## 24HR IN CAMP RESOURCE

**EMERGENCY SHIFT TICKET and EVALUATION FORM**  
The responsible Government Officer will complete this form each shift.

Contractor Name: **THE BEST CAMP LLC**  
Operator #1: **FIRST & LAST**  
Operator #2: **FIRST & LAST**  
Operator Furnished By:  Contractor  Government

Incident or Project Name: **MISSION**  
Incident Number: **CA-MMU-018115**  
Request Number: **E-333**

Agreement Number: **MMU-0000015950**

Equipment Make: **TENT**  
Equipment Model / Type: **WESTERN SHELTER 19X35**  
License Number: **COMPLETE VIN#**

Serial Number: **COMPLETE VIN#**

Date Mo / Day	Start	Stop	Work	Hours	Days / Miles
9/2	0001	2400	24	24	ICP

Equipment Use (Circle):  Under Agreement  
 Released by Government  
 Withdrawn by Contractor

Remarks/Comments: **(4) TENTS, CANOPY WISDES FLOOR & INSULATED ROOF 570sq ft**

Vendor Rating: **VENDOR RATING MUST BE DONE**

Govt. Rep. Name and Position - PRINT: **Print Your Name**  
Govt. Rep. Signature: *Your Signature*  
Contractor Signature: *Jafin Smith*  
Date: **9/5/20** Time: **1900**

\* NOTE: any rating of POOR requires an explanation in Comment Section.  
 \*\* Final evaluation or for more documentation, use a CALFIRE Form 230 or equivalent.



# DMOB

## BOND INCIDENT

### CA-ORC-136890

- Resources must check-in prior to the Demobilization process.
  - In order to be deemed excess, supervisors must submit an ICS 213 to the Resources Unit.
  - Resources report to Demobilization Unit at the times posted on the tentative DMOB list, which is posted around the Incident Base and posted to the Box Account.
  - Prior to reporting to DMOB, please return all supplies and equipment.
  - Resources will get signatures from the following units:
    - Ground Support
    - Training (If they have a trainee)
    - Documentation
    - Time
    - DMOB
- The following will be done by radio at DMOB**
- Motels
  - Supply
  - Communications



# ***TRAINING SPECIALIST MESSAGE***

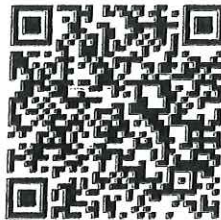
**A Training Specialist is available for trainees on the incident.**

**All State, Federal and local government agency Trainees working on Position Task Books will need to register with the Incident Training Specialist in order to receive proper credit for your assignment.**

***Training Specialist's***

***Dennis Martin***

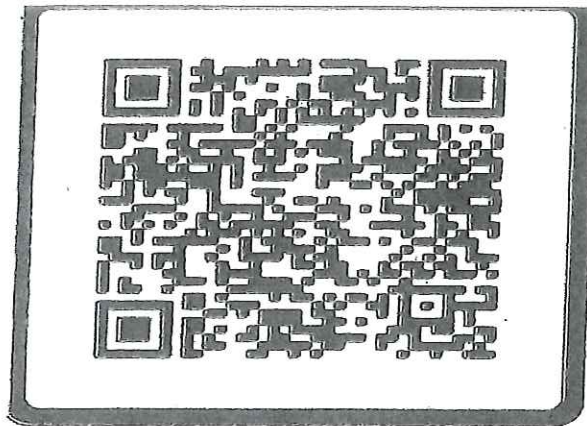
**(707) 479-8421**



**Register using the QR Code**

# Trainee Message

If you would like to CHECK-OUT / CLOSE OUT your packet with the Training Specialist, please scan the QR code, fill in "ALL" information and "click" submit.



Your completed packet will be emailed back to you

If you have any questions or concerns, please feel free to contact me.

Training Specialist

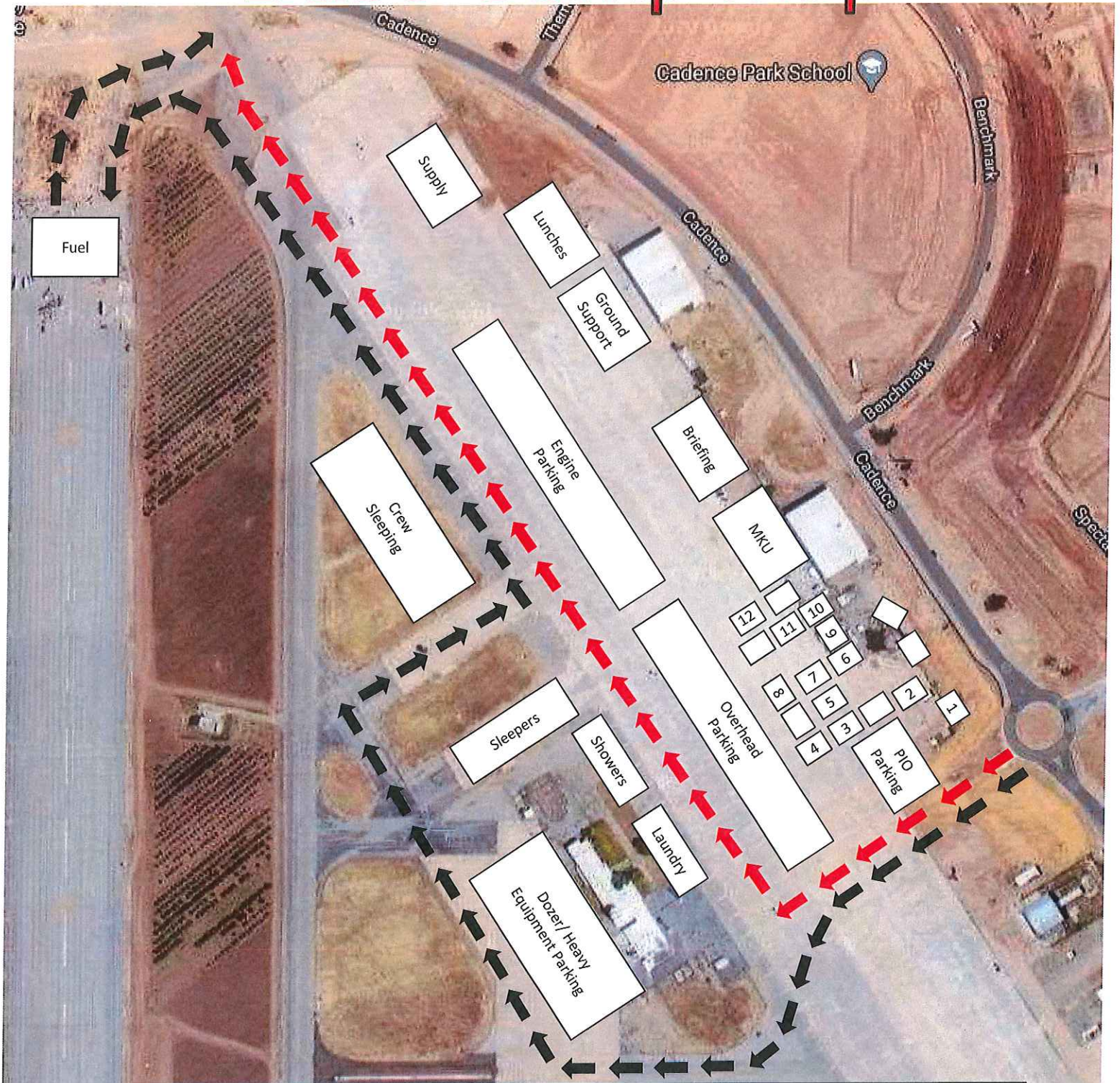
Dennis Martin

(707) 479-8421

[Dennis.martin@cityofvallejo.net](mailto:Dennis.martin@cityofvallejo.net)



# Bond Fire Base Camp Map



1	PIO	4	Check-in/ Demob	7	Clerical	10	Motels
2	Safety	5	Ordering	8	Cal Fire Training	11	Comp Claims/ Procurement
3	Liaison	6	Training	9	Situation Unit	12	Comms

This Page Intentionally Left Blank





