

INCIDENT ACTION PLAN

BOND INCIDENT

CA-ORC-136890

Monday




OPERATIONAL PERIOD

12/7/2020 0700
to
12/8/2020 0700



Briefing Frequency - CDF Tac 29

ORGANIZATION ASSIGNMENT LIST (ICS 203)

1. Incident Name: Bond		2. Operational Period: Date From: 12/7/2020 Time From: 0700		Date To: 12/8/2020 Time To: 0700	
3. Incident Commander(s) and Command Staff:			7. Operation Section:		
IC/UC's	Eddy Moore, Ron Roberts, Stan Hill, Joses Walehwa,	Operations	Josh Bischof, Mike Petro (T)		
Deputy	Charlie Blankenheim (T), Darryl Laws (T)	Deputy Operations	Shane Laurderdale, Shawn Raley, Craig Covey (T)		
Safety Officer	Doug Ferro, Jack Piccinini, Bill Murphy(T)	Night Ops	Monty Smith		
Information Officer	Steve Kaufmann, Chris Harvey(T), Thanh Nguyen	Staging Area	Great Park	Gordon Levine	
Liaison Officer	Dave Pender, Mitch Villalpando, Rob Capobianco (T)	Branch	I	Tim Perkins	
LELO	Josh Allen, LT. Anthony Bertain	Division/Group	B	Matthew Levesque, Bill Murphy(T)	
		Division/Group	D	Hector Medrano(12), Ron Earls(12)	
Agency/Organization	Name	Division/Group	E	Nathan Arellano, T.J McGovern(T)	
OCFA	Kenny Dossey	Division/Group			
USFS	Darrell Vance	Division/Group			
OCSO	Mke Peters	Branch	V	Jim Hudson	
CALFIRE	Barry Owens	Division/Group	M	Todd Horton	
Care Ambulance	Jeremy Ruga	Division/Group	T/Y	Shane Frederick	
OC Parks	Chris Lorenzi	Division/Group			
CHP	David Rodgers	Division/Group			
OC EOC	Kevin McArthur	Division/Group			
Caltrans	Ramone Torres	Branch	Suppression Repair	Henry Herrera	
SCE	Scott Brown	Division/Group	Suppression Repair	Alvin Taylor	
Capstone	Terry Bowen	Division/Group			
IRWD	Bill Wesson	Division/Group			
Cal OES	Dave Stone	Branch			
		Division/Group			
5. Planning Section:		Division/Group			
Chief	Jason Martin, Kevin Fetterman (T)	Division/Group			
Deputy	Dave Shy, Gabe Garcia	Division/Group			
Resource Unit	Gwyndolyn Ozard, Nochella Funes, Cameron Daniels, Brian Torosian(T) Dan Brown(T)	Division/Group			
Situation Unit	Denny O'Neil, Brandon Strohbehn, Coby Dyché (T)	Branch			
Documentation Unit	Allyson Liang, Tamara Anderson (T)	Division/Group			
Demobilization Unit	Chris Lynch, Floyd Horn	Division/Group			
GISS	Dan Dresselhaus, Rebecca Kriha	Division/Group			
FBAN	Tim Chavez	Division/Group			
IMET	Rich Thompson	Division/Group			
DINS	Nick Pivaroff	Air Operations Branch		Director:	Greg Bradshaw
TNSP	Dennis Martin	Air Support Group Supervisor		Jonathan Keesee, Ray Gomez (T)	
		Air Tactical Group Supervisor		Doug Ross	
6. Logistics Section		Helibase Manager		Rick Boman	
Chief	Matt Reich, Scott Ashbach				
Deputy	Mathew Brandt	8. Finance/Administration Section:			
Supply	Steve Dohman	Chief	Mara Zaver, Roger Raines, Jim Ruane, Penny Wu (T), Wenyea Wang (T)		
Facilities Unit	Matt Brown, Jason Wilson (T) Mark Mollet	Time Unit	Greg Tunzi		
Ordering Unit	Daniel Williams, Marc Cornelison	Procurement Unit	Courtney Arebalo		
Communications Unit	Mike Heyfron, Eric White	Comp/Claims Unit	Sean Bowe		
Medical Unit	Steve McGary, Rob Reed	Cost Unit	Angela Davidson		
Motel Unit	Dawn Muschetto				
Prepared By: Name:	David Shy	Position/Title:	PSC	Signature:	
ICS 203		Date/Time:	12/6/2020 2000 hours		

Fire and COVID-19 Briefing Checklist

Self-Awareness / Screening

- Immediately separate yourself from others.
- Notify supervisor if you or others experience:
 - Cough, more than expected
 - Shortness of breath or difficulty breathing
 - New loss of taste or smell
 - Fever
 - Chills
 - Sore throat
 - Muscle pain
- Review and follow crew and division plans to isolate, triage, and transport symptomatic personnel.

Hygiene on the Fireline

- Properly wash or sanitize your hands often, especially before and after eating or entering a public place, and after coughing or sneezing.
- Avoid handshakes and communal use items.
- Maintain a supply of hand sanitizer and hand wipes. Inform supervisor of needed resupply.
- Disinfect high touch surfaces often:
 - Radios, phones, doors, pumps, fuel cans, etc.

Social Distancing and Protective Equipment

- Initiate, practice, and remind others of social distancing.
- Conduct briefings and conversations outdoors and at least 6 feet apart.
- Utilize face coverings as a tool when practical.
- Clean or replace dirty face coverings, equipment, and PPE.

Communications

- Face coverings and social distancing complicate communications. Ensure effective sender/receiver messaging.

Protect yourself, your crew, and your camp!

Find more information: <https://www.nwcg.gov/coronavirus>.



INCIDENT Weather Forecast



FORECAST NO: 4

NAME OF FIRE: Bond

PREDICTION FOR: 24 hour SHIFT

UNIT: OCFA, CalFire

SHIFT DATE: 12/7/20 – 12/8/20 (0700-0700)

SIGNED:

Rich Thompson

TIME AND DATE

Incident Meteorologist

FORECAST ISSUED: 12/6/20 @ 1800

DISCUSSION: ...RED FLAG WARNING UNTIL 1000 PM TUESDAY...

Moderate Santa Ana winds will prevail across the incident through the operational period. Winds will continue to increase through today, then will peak tonight and Tuesday morning. Peak northeasterly wind gusts of 35 to 50 MPH are expected. As the offshore winds develop, dry conditions will persist with minimum values in the teens (and locally into the single digits) today with little recovery tonight. **This combination of gusty winds and low relative humidity will result in widespread critical fire weather conditions.**

On Tuesday, the Santa Ana winds will continue although they will be weaker. However, conditions will be warmer and drier, resulting in continued critical fire weather conditions. On Wednesday, weak diurnal flow will develop with cooler temperatures and higher relative humidity.

WEATHER FORECAST:

WEATHER: Partly cloudy.

TEMPERATURES: Max: 70-78.
Min: 52-60.

HUMIDITY: Min: 10-20%.
Max: 15-25%.

20 FT WINDS:
RIDGETOP - 0700-1400: Northeast 8-15 MPH Gust 20-30 MPH.
1400-2200: Northeast to east 10-20 MPH Gust 25-35 MPH.
2200-0700: Northeast to east 15-25 MPH Gust 30-45 MPH.


SLOPE/VALLEY - 0700-1400: Northeast 10-18 MPH Gust 20-30 MPH.
1400-2200: Northeast 12-22 MPH Gust 25-40 MPH.
2200-0700: Northeast 15-25 MPH Gust 35-50 MPH.

EXTENDED FORECAST:

Tuesday: Mostly clear. High temperatures 74-82. Low temperatures 54-62. Minimum RH: 8-15%. Maximum RH: 10-20%. Northeast winds 15-25 MPH with gusts 35-50 MPH, decreasing to 8-15 MPH with gusts 20-35 MPH in the afternoon.

Wednesday: Mostly clear. High temperatures 68-76. Low temperatures 50-58. Minimum RH: 10-20%. Maximum RH: 20-35%. Northeast winds 8-15 MPH with gusts 20-30 MPH.

FIRE BEHAVIOR FORECAST

FORECAST NUMBER: 4	TYPE OF FIRE: WILDFIRE
FIRE NAME: BOND	OPERATIONAL PERIOD: 12-7-2020 24 HR
DATE ISSUED: 12-6-2020	TIME ISSUED: 1900
UNIT: ORANGE COUNTY, CLEVELAND NF	SIGNED:  Typed/printed: TIM CHAVEZ, FBAN

INPUTS

WEATHER SUMMARY:

MODERATE SANTANA WINDS RETURN FOR THE OPERATIONAL PERIOD. SEE IMET FORECAST

OUTPUTS

FIRE BEHAVIOR**GENERAL:**

IT HAS BEEN 242 DAYS SINCE RAINFALL OF OVER ½ INCH WAS RECORDED IN THIS AREA. RECORD SETTING LOW 100 HOUR AND 1000 HOUR FUEL MOISTURES FOR THIS TIME OF YEAR. LIVE FUEL MOISTURE IN CHAMISE IS IN THE MID 60'S RANGE, 60% IS RECOGNIZED AS CRITICAL LEVEL. EXTREMELY LOW HUMIDITY RECOVERY WILL WORSEN CONDITIONS AS THE WEEK UNFOLDS.

SPECIFIC:**DIVISION T**

VERY LIGHT FUELS WILL PROBABLY NOT HARBOR ANY LATENT HEAT. IF ANY RIPARIAN AREAS ARE SMOLDERING, THEY MAY THREATEN THE LINE ON THE WEST SIDE OF IRVINE LAKE.

DIVISION Y

OAKS AND BRUSH WITH SCORCHED CANOPY IS WIDESPREAD IN THIS DIVISION. THIS COULD RESULT IN REBURN BUT PROBABLY NOT HAVE THAT MUCH POTENTIAL TO SPREAD OUTSIDE THE LINE.

DIVISION B

THE AREA NORTH OF THE LINE IN THIS DIVISION HAS NO RECORDED FIRE HISTORY. A TOPOGRAPHIC AND FUELS RUN WOULD HAVE HIGH GROWTH POTENTIAL BUT IS UNLIKELY DUE TO THIS OPERATIONAL PERIOD PREVAILING WIND BEING FROM THE NORTH EAST.

DIVISION D AND E

THIS END OF THE FIRE HAS THE MOST POTENTIAL FOR A WIND DRIVEN BREAKOUT. IF A SPOT FIRE GETS ESTABLISHED IN WILLIAMS CANYON OR MODJESKA, WITH THE NORTHEAST WIND ORIENTATION, A MAJOR RUN IS POSSIBLE. WITHIN AN HOUR IT WILL CROSS SANTIAGO CANYON AND WITHIN SIX HOURS IT WILL CROSS HIGHWAY 241. MAXIMUM SPOTTING DISTANCE WILL BE HALF MILE TO A MILE.

DIV M

NO MOVEMENT ANTICIPATED

AIR OPERATIONS:

TURBULENT FLOW OVER RIDGE TOPS WILL BE A HAZARD. VISIBILITY EXCELLENT.

SAFETY

- WHEN WORKING IN AREAS OF UNBURNED CANOPY ALWAYS HAVE A LOOKOUT AND AN ESCAPE ROUT IN CASE OF REBURN
- FIRE WEAKEND TREES MAY FALL AT ANY INSTANT IN CANYONS AND RIPARIAN AREAS
- EXPECT ROLLOUT IN STEEP CANYONS WITH BURN ABOVE

ASSIGNMENT LIST (ICS 204 WF)

CONTROLLED UNCLASSIFIED
INFORMATION/BASIC

1. Incident Name: <p style="text-align: center;">Bond</p>	2. Operational Period: Date From: 12/07/20 Date To: 12/08/20 Time From: 0700 Time To: 0700	3. Branch Group Suppression Suppression Repair Repair
--	---	---

Page 1 of 1

4. Operations Personnel:	
Operations Section Chief: Josh Bischof, Mike Petro (T)	Night Ops: Monty Smith
Branch Director: Henry Herrera	Branch Safety:
Division/Group Supervisor: Alvin Taylor	Air Attack: Doug Ross

5. Resources Assigned:		** Resources Below in Bold are 12 Hour **					
Resource Identifier	ALS	LWD	Leader	Personnel	Request #	Hours	Reporting Location
CRW2 I/A BLM SRV #7			M, CARL	19	C-10	0700-1900	ICP
CRW2 BIA SHINGLE SPRINGS 42			AROW, DRAKE	13	C-1	0700-1900	ICP
DOZ ORC 1			SMITH, BRENT	1	E-199	0700-1900	ICP
DOZ ORC 2			PERRAULT, ALAN	1	E-15	0700-1900	ICP
DOZ ORC 3			HAHN, DAVID	1	E-16	0700-1900	ICP
DOZ PVT E-201 - BLACK CAT			FUKUDA, ADRIAN	1	E-201	0700-1900	ICP
DOZ PVT E-202 -ZX AG			NIEBLAS, COLEMAN	2	E-202	0700-1900	ICP
W/T PVT E-203 - DOC'S WATER			EDWARDS, RICH	1	E-203	0700-1900	ICP
W/T PVT E-204 - DOC'S WATER			VAINE, JOE	1	E-204	0700-1900	ICP
GRD+						0700-1900	ICP
SKD+						0700-1900	ICP
EXC+						0700-1900	ICP
HEQB NEWELL			NEWELL, DAVID	1	O-338	0700-1900	ICP
FSRS ERICKSON			ERICKSON, DAVID	1	O-270	0700-1900	ICP
READ GNADT			CASEY GNADT	1	O-347	0700-1900	ICP
ARCH CARVER			CARVER, LARRYNN	1	O-95	0700-1900	ICP
FOBS NESSA			NESSA, JOEL	1	O-61	0700-1900	ICP
FOBS+						0700-1900	ICP

6. Work Assignments:
Identify and document suppression repair needs to facilitate timely completion of repairs.
Implement Suppression Repair Plan.

7. Special Instructions:

BOND COMMUNICATIONS PHONE # 805-903-3489

8. Communications							
Name	Ch	Function	Rx Freq	Rx Tone	Tx Freq	Tx Tone	Notes
Fire OC	1	COMMAND	151.0100	123.0 (T2)	154.9650	123.0 (T2)	ALL DIVISIONS
CDF T32	6	TACTICAL	151.2425	192.8 (T16)	151.2425	192.8 (T16)	ALL DIVISIONS
CDF T23	14	AIR TO GROUND	159.4500	192.8 (T16)	159.4500	192.8 (T16)	AIR TO GROUND
CALCORD	15	MEDICAL	156.0750	156.7(T6)	156.0750	156.7(T6)	MEDICAL
AIRGUARD	16	AIRGUARD	168.6250		168.6250	110.9 (T1)	***EMERGENCY ONLY***

9. Prepared by: Name: Brian Torosian RESL(T)
Signature:

ICS 204

Date/Time: 12/6/2020 2200

Personnel Count: 45



SAFETY MESSAGE

Bond Fire

CA-ORC-136890 December 7, 2020 0700-0700



AWARENESS

Watch Out

- Return of Red Flag conditions
- Possible preemptive power shut off to affected areas
- More residents back in their homes and on the roads

Mitigation

- Keep up to date on current and predicted weather and fire behavior
- Expect questions and public relations opportunities from residents
- Confirm safety briefings with your crews

ROAD HAZARDS

Watch Out

- Power and cellular crews continuing work on infrastructure repair
- Road repairs continuing in several areas
- Residents driving and walking in all areas, some on UTV's

Mitigation

- Expect interrupted and possibly congested travel on roads
- Turn on emergency lights and use cones for your safety when parked
- Be aware of speed limits and safety issues while driving

DEMOB

Watch Out

- Tired crews are ready to go home or perhaps head to a new assignment
- There will be an increase in backing and maneuvering vehicles in tight spots
- Dirty cabs, tight quarters and used equipment can be receptive for infection

Mitigation

- Ensure drivers are well rested and rotated on long drives home
- Drive cautiously in and around ICP and demo pedestrian traffic
- Take time to decontaminate your cab and equipment to reset cleanliness

COVID-19

REDUCE THE EXPOSURE AND SPREAD BY:

- **Wear a face covering when:**
 - ✓ In public and unable to maintain six feet of social distance
 - ✓ When at the ICP and unable to maintain six feet social distance
 - ✓ At all times when you are in the food line

Jason Williams

CAL FIRE IMT TEAM 4 SAFETY(T)

REDUCE EXPOSURE BY WEARING A FACE COVERING

S
A
F
E
T
Y

S
A
F
E
T
Y

S
A
F
E
T
Y

E
V
E
R
Y
O
N
E
S
R
E
S
P
O
N
S
I
B
I
L
I
T
Y



INCIDENT ACTION PLAN SAFETY ANALYSIS (ICS 215A)



1. Incident Name: Bond		2. Incident Number: CA-ORC-136890	
3. Date/Time Prepared: Date: 12/06/2020 Time: 1700		4. Operational Period: Date From: 12/07/2020 To: 12/08/2020 Time From: 0700 hours To: 0700 hours	
5. Incident Area	6. Hazards/Risks	7. Mitigations	
ALL	Potential for Extreme Fire Behavior due to predicted increased winds	Have Look Outs assigned at all times to provide area spot weather changes	
ALL	Driving Speeds	SLOW DOWN- Be Aware there are citizens and utility works in all areas of this incident.	
ALL	Power lines are potentially being reenergized in all areas	Be aware of increased hazard and potential for issues from homes and infrastructure being reenergized.	
DIV B, E, Y	Narrow roadways and pedestrian foot traffic	Turn lights on, observe speed limits and expect vehicles opposing traffic. Plan for extended travel times.	
ALL	Working around heavy equipment	Maintain eye-to-eye contact with the operator. Have fire suppression support when operating in dry fuels.	
ALL	Poor communications – VHF and Cellular	Review ICS 205 and ensure radio clone is current. Use human repeaters if necessary, or face to face	
ALL	Steep, unstable terrain and roll-out	Watch footing and maintain downhill tool placement. Be aware of loose material. Look for ash pits and stump holes.	
ALL	Helicopters - Water Drops and Turbulence	Monitor A/G. Post lookouts and make escape routes and safety zones known. Watch overhead for hazard trees and wind changes.	
ALL	COVID-19: Reduce exposure potential to yourself, your crew, and the public	Wear a mask while in the ICP, while in line for food, and when six feet of social distancing is difficult. Wash hands frequently for at least 20-seconds.	
ALL	FATIGUE - End of a very long fire season	Maintain a safe work/rest ratio, stay well fed and hydrated.	
8. Prepared by (Safety Officer): Name: Douglas M Ferro		Signature: _____	
Prepared by (Deputy Operations Section Chief): Name: Shawn Raley		Signature: _____	
ICS 215A		Date/Time: 12/06/2020 1700hrs	

ICS 205 - INCIDENT RADIO COMMUNICATIONS PLAN

CONTROLLED UNCLASSIFIED
INFORMATION//BASIC

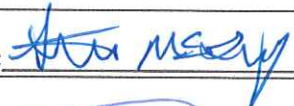

1. Incident Name: Bond	2. Date/Time Prepared Date: 12/06/2020 Time: 2120	3. Operational Period: Date From: 12/07/20 Date To: 12/08/20 Time From: 0700 Time To: 0700
----------------------------------	--	---

4. Communications									
Ch#	Function	Name	Assigned To	Rx Freq	Rx Tone	Tx Freq	Tx Tone	Notes	
1	COMMAND	Fire OC	ALL DIVS	151.0100	123.0 (T2)	154.9650	123.0 (T2)	ALL DIVISIONS	
2									
3	TACTICAL	CDF T24	DIV B	151.3325	192.8 (T16)	151.3325	192.8 (T16)	BRANCH I	
4	TACTICAL	CDF T25	DIV T/Y	159.2775	192.8 (T16)	159.2775	192.8 (T16)	BRANCH V	
5	TACTICAL	CDF T31	DIV D	159.3825	192.8 (T16)	159.3825	192.8 (T16)	BRANCH I	
6	TACTICAL	CDF T32	SUPP REPAIR	151.2425	192.8 (T16)	151.2425	192.8 (T16)	ALL DIVISIONS	
7	TACTICAL	CDF T34	DIV E	151.4675	192.8 (T16)	151.4675	192.8 (T16)	BRANCH I	
8	TACTICAL	VFIRE 23	UNASSIGNED	154.2950	156.7 (T6)	154.2950	156.7 (T6)		
9	TACTICAL	VFIRE 26	DIV M	154.3025	156.7 (T6)	154.3025	156.7 (T6)	BRANCH V	
10									
11									
12									
13									
14	AIR TO GROUND	CDF T23	ALL DIVS	159.4500	192.8 (T16)	159.4500	192.8 (T16)	AIR TO GROUND	
15	MEDICAL	CALCORD	ALL DIVS	156.0750	156.7(T6)	156.0750	156.7(T6)	MEDICAL	
16	AIRGUARD	AIRGUARD	ALL DIVS	168.6250		168.6250	110.9 (T1)	***EMERGENCY ONLY***	
17									
18									
19									
20	AIRGUARD	AIRGUARD	ALL DIVS	168.6250		168.6250	110.9 (T1)	***EMERGENCY ONLY***	

5. Special Instructions
 **** THE LATEST CLONE FOR 12/07/20 IS "BOND1" WHICH IS THE TITLE OF THE GROUP, MORNING BRIEFING BROADCAST ON CDF TAC 24****

6. Prepared by (Communications Unit Leader): Name: MIKE HEYFRON	Signature:
ICS 205 - CONTROLLED UNCLASSIFIED INFORMATION//BASIC	NIMS IAP Date/Time: 12/06/20 2120

MEDICAL PLAN (ICS 206)

1. Incident Name: Bond		2. Operational Period: Date From: 12/7/20 Date To: 12/8/20 Time From: 0700 Time To: 0700					
3. Medical Aid Stations:							
Name	Location	Contact Number/Freq	Paramedics				
CAL MAT (medical assistance team)	Bond ICP	Command	MD				
Care Ambulance X-Ray 1	Bond ICP	Command	NO				
4. Transportation (indicate air or ground):							
Ambulance Service	Location	Contact Number	Level of Service				
Care Ambulance X-Ray 2	DP55 (Irvine Lake)	Command	BLS				
Care Ambulance X-Ray 3	OCFA Station 15	Command	BLS				
ORC Copter 1 (Hoist & NVG)	El Toro Helibase	Command	ALS				
5. Hospitals:							
Hospital Name	Address,	Contact Number(s)/ Frequency	Travel Time		Trauma Center	Burn Center	Helipad
	Lat & Long Helipad		Air	Ground			
Mission Regional Medical Center	27700 Medical Center Rd Mission Viejo CA N33°33.65 W117°39.98	949-365-2108	5	14	Level 2	<input type="checkbox"/>	<input checked="" type="checkbox"/>
UC Irvine Medical Center	101 The City Dr, Orange CA N33°78.73 W117°88.83	714-456-6233	5	35	Level 2	<input checked="" type="checkbox"/>	<input checked="" type="checkbox"/>
OC Global Medical Center	1001 N.Tustin Ave Santa Ana CA N33°45.30 W117°49.97	714-953-3331	10	20	Level 1	<input checked="" type="checkbox"/>	<input checked="" type="checkbox"/>
6. Special Medical Emergency Procedures							
Line Emergency Crew Supervisor will contact Division Supervisor with patient complaint/condition and location. - Division Group Supervisor Contacts: 1. Closest EMS resource 2. Communications Unit - Communications Unit Contacts: 1. Ground or Air ambulance as requested. 2. Operations 3. Safety 4. Medical Unit - Division Supervisor or designee will serve as point of contact and run medical emergency on assigned channel. 1. A pre-assigned tactical frequency (i.e. CALCORD) should be used for IWI and only for duration of the emergency. - Communications Unit will clear the Command channel for emergency traffic as needed for duration of the need.				Injury Reporting Procedures Nature of Injury: _____ Location of Patient: _____ Point of Contact: _____ Transportation Requested by: Air _____ Ground _____ Point of Pick-Up: _____ Lat: _____ Long: _____ Patient Unit ID: _____ Is an EMT with Patient: Yes _____ No _____ Age: _____ Sex: Male _____ Female _____			
Camp Emergency Contact Medical Unit with patient complaint/condition and location. Medical staff will respond to stabilize the patient. - Medical Unit contacts 1. Communications 2. Safety 3. Logistics 4. Operations 5. Crew Supervisor 6. Comp/Claims				All Emergencies - Secure the area and identified witnesses for later investigation. Keep accurate log of events.			
<input type="checkbox"/> Check box if aviation assets are utilized for rescue. If assets are used, coordinate with Air Operations.							
7. Prepared by (Medical Unit Leader):		Steve McGary		Signature: 			
8. Approved by (Safety Officer):		Doug Ferro		Signature: 			
ICS 206		NIMS IAP		Date/Time: 12/6/20		1900	



BOND INCIDENT FINANCE MESSAGE



FINANCE SECTION is located at the end of “trailer row” near overhead parking.

CAL FIRE TIME UNIT (Personnel and Hired Equipment)

- **CAL FIRE PERSONNEL** – make sure you have started your eFC-33’s and update after each shift. Please make sure Epay schedules are up to date.
- **HIRED EQUIPMENT SUPPLIERS** – Check in with the Time Unit and drop off your agreements.
- **SHIFT TICKET BOOKS** - Available in the Time Unit (agency personnel only).

DIVISION / GROUP - LINE SUPERVISORS

- Please make sure to turn in hired equipment shift tickets at the end of each shift.

COMP / CLAIMS

For Damage Claims (suppression, property, vehicle), report to Comp Claims using an ICS-213. We will need location, description of damages, and your contact information.

Please report all injuries and suppression damage to the Comp / Claims, no matter how minor.

TOLL ROAD FEES

If you are a government agency employee and have traveled any of the Orange County toll roads, please scan the QR CODE below, follow the link, and complete the Google form. This information will be used to request a waiver of toll road fees for you and your agency.

TOLL ROAD WAIVER FORM



Mara Zaver, FSC1
Roger Raines, FSC1

BOND FIRE
INFORMATION SHEET

Fire Information Line: (714) 504-2631

Please scan the QR Below for CAL FIRE's Social Media Policy 0691.



INCIDENT MAIL

The PIO Trailer will receive mail/packages shipped to the Incident. Please ensure all mail addressed to the incident follows the format below:

(YOUR NAME, YOUR ORDER NUMBER)
C/O BOND FIRE BASE CAMP
PUBLIC INFORMATION TRAILER
PUSAN WAY AT CADENCE WAY
ORANGE COUNTY GREAT PARK, IRVINE CA 92618

LOST AND FOUND

Any items that are found, please bring them to the PIO Trailer located at the entrance to Base Camp and leave them with PIO staff. If you lose something, please leave your name and contact information at the trailer and a description of lost items.



DMOB

BOND INCIDENT CA-ORC-136890

- Resources must check-in prior to the Demobilization process.
 - In order to be deemed excess, supervisors must submit an ICS 213 to the Resources Unit.
 - Resources report to Demobilization Unit at the times posted on the tentative DMOB list, which is posted around the Incident Base and posted to the Box Account.
 - Prior to reporting to DMOB, please return all supplies and equipment.
 - Resources will get signatures from the following units:
 - Ground Support
 - Training (If they have a trainee)
 - Documentation
 - Time
 - DMOB
- The following will be done by radio at DMOB**
- Motels
 - Supply
 - Communications

Bond Fire Suppression Repair Guidelines for SRA

Mitigation of fire suppression damage will minimize the long-term impacts caused by fire suppression efforts, especially during rain events. The following actions will be implemented:

Control/Dozer lines

- Construct waterbars to mitigate the potential for accelerated erosion on exposed soils.
- Slash from felled trees adjacent to control line may be masticated, chipped, or lopped and scattered onto the control line where it will not compromise the fireline function.
- Berms and push-piles shall be spread out to the extent feasible.
- Soil and slash piled against trees or perched above watercourses is especially important to disperse.
- Where lines intersect trails, roads or other access point, redistribute vegetation heavily to disguise within 100 feet or line of sight, whichever is greater. In these locations, minimal additional cutting of vegetation may be conducted to provide sufficient material. **This will be done in a case by case basis as evaluated by division supervisor.**
- Create berms or use natural features (boulders, logs, etc.) to block vehicle access to dozer and hand lines wherever they intersect roads or trails.

Roads

- Clean culverts and plugged drainage facilities.
- Remove outside berms created during suppression activities and incorporate into road surface or re-establish existing berms where applicable.
- Install rolling dips where rolling dips previously existed or where needed.

Waterbars

Slope Gradient	Maximum Waterbar Spacing
0-10%	200'
11-25%	150'
26-50%	100'
>50%	75'

- Waterbars should be cut diagonally into firm soil at least 6" deep and have a berm at least 12" in height. Waterbars should have a 30-45 degree angle to the fall line.
- Outlets must be open and directed onto the least erodible material possible for energy dissipation and sediment filtration.

Watercourses

- All slash, loose soil and debris deposited into watercourses during suppression activities shall be removed and stabilized to the extent possible.

Hazard Trees

- Trees and snags that present a safety hazard as a result of suppression shall be felled.
- Slash from felled trees shall be lopped and scattered, chipped or masticated.

Fences, Gates and Other Improvements

- Fences and gates damaged by suppression efforts shall be repaired to pre-fire functioning standard.
- Other improvements shall be evaluated by a representative of the FSR group and/or the Comp./Claims Unit of Incident Management Team #4.

Staging Areas/Safety Zones

- Re-contour or outslope these areas if practical.
- Avoid very long waterbars.
- Slash pack in key areas to minimize erosion if slash is readily available

All trash, flagging and fire suppression supplies/equipment shall be collected and back-hauled to staging areas, drop points and/or base camp.

TRAINING SPECIALIST MESSAGE

**A Training Specialist is available for trainees on
the incident.**

**All State, Federal and local government agency
Trainees working on Position Task Books will
need to register with the Incident Training
Specialist in order to receive proper credit for
your assignment.**

Training Specialist's

Dennis Martin

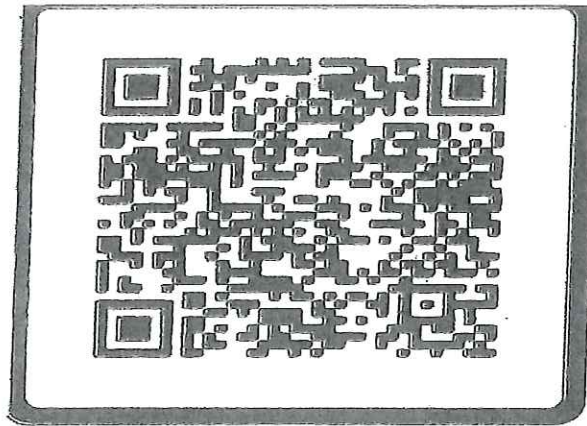
(707) 479-8421



Register using the QR Code

Trainee Message

If you would like to CHECK-OUT / CLOSE OUT your packet with the Training Specialist, please scan the QR code, fill in "ALL" information and "click" submit.



Your completed packet will be emailed back to you

If you have any questions or concerns, please feel free to contact me.

Training Specialist

Dennis Martin

(707) 479-8421

Dennis.martin@cityofvallejo.net



CAL-FIRE INCIDENT MANAGEMENT TEAM 4



24HR LINE RESOURCE - 2 OPERATOR

EMERGENCY SHIFT TICKET and EVALUATION FORM
The responsible Government Officer will complete this form each shift.

Contractor Name: **THE BEST DOZERS LLC**
Operator #1: **FIRST & LAST**
Operator #2: **FIRST & LAST**

Incident or Project Name: **MISSION**
Incident Number: **CA-MMU-018115**
Request Number: **E-444**

Agreement Number: **MMU-0000015953**
Equipment Make: **1999 PETERBILT 379**
Equipment Model / Type: **TRANSPORT 18 WHEEL**
Serial Number: **COMPLETE VIN# 12345A1**

Operator Furnished By: Contractor Government
Operating Supplies Furnished By: Contractor Government

Equipment Status: Inspected Under Agreement
Released by Government:
Withdrawn by Contractor:

Remarks/Comments**

Date Mo./Day	Start	Stop	Work	Days / Miles
9/5	0701	2400	17	DIV X
9/6	0001	0700	7	DIV X

Vendor Rating: **COMPLETE VIN#**

Poor* Avg. Good Exc. N/A

Met Performance Expectations
Equipment in Safe Working Condition
Operator Skill Level
Operates Safely
Operator's Cooperation Level
Overall Performance

Print Your Name: **Yours Signature**
Govt. Rep. Signature: **John Smith**
Contractor Signature: **John Smith**
Date: **9/6/20** Time: **0700**

* NOTE: any rating of POOR requires an explanation in Comment Section.
** Final evaluation or for more documentation, use a CALFIRE Form 230 or equivalent.

12HR LINE RESOURCE - 1 OPERATOR

EMERGENCY SHIFT TICKET and EVALUATION FORM
The responsible Government Officer will complete this form each shift.

Contractor Name: **THE BEST DOZERS LLC**
Operator #1: **FIRST & LAST**
Operator #2: **FIRST & LAST**

Incident or Project Name: **MISSION**
Incident Number: **CA-MMU-018115**
Request Number: **E-555**

Agreement Number: **MMU-0000015955**
Equipment Make: **2004 CAT**
Equipment Model / Type: **D6N / TYPE II E**
Serial Number: **COMPLETE VIN#**

Operator Furnished By: Contractor Government
Operating Supplies Furnished By: Contractor Government

Equipment Status: Inspected Under Agreement
Released by Government:
Withdrawn by Contractor:

Remarks/Comments**

Date Mo./Day	Start	Stop	Work	Days / Miles
9/7	0001	0700	7	OFF SHIFT
9/7	0701	1900	12	DIV X
9/7	1901	2400	5	OFF SHIFT

Vendor Rating: **COMPLETE VIN#**

Poor* Avg. Good Exc. N/A

Met Performance Expectations
Equipment in Safe Working Condition
Operator Skill Level
Operates Safely
Operator's Cooperation Level
Overall Performance

Print Your Name: **Yours Signature**
Govt. Rep. Signature: **John Smith**
Contractor Signature: **John Smith**
Date: **9/7/20** Time: **1900**

* NOTE: any rating of POOR requires an explanation in Comment Section.
** Final evaluation or for more documentation, use a CALFIRE Form 230 or equivalent.

24HR / 12HR TRANSITION SHIFT TICKET

EMERGENCY SHIFT TICKET and EVALUATION FORM
The responsible Government Officer will complete this form each shift.

Contractor Name: **THE BEST DOZERS LLC**
Operator #1: **FIRST & LAST**
Operator #2: **FIRST & LAST**

Incident or Project Name: **MISSION**
Incident Number: **CA-MMU-018115**
Request Number: **E-444**

Agreement Number: **MMU-0000015953**
Equipment Make: **1999 PETERBILT 379**
Equipment Model / Type: **TRANSPORT 18 WHEEL**
Serial Number: **COMPLETE VIN# 12345A1**

Operator Furnished By: Contractor Government
Operating Supplies Furnished By: Contractor Government

Equipment Status: Inspected Under Agreement
Released by Government:
Withdrawn by Contractor:

Remarks/Comments**

Date Mo./Day	Start	Stop	Work	Days / Miles
9/6	0701	1900	12	DIV X
9/6	1901	2400	5	OFF SHIFT

Vendor Rating: **COMPLETE VIN#**

Poor* Avg. Good Exc. N/A

Met Performance Expectations
Equipment in Safe Working Condition
Operator Skill Level
Operates Safely
Operator's Cooperation Level
Overall Performance

Print Your Name: **Yours Signature**
Govt. Rep. Signature: **John Smith**
Contractor Signature: **John Smith**
Date: **9/6/20** Time: **1900**

* NOTE: any rating of POOR requires an explanation in Comment Section.
** Final evaluation or for more documentation, use a CALFIRE Form 230 or equivalent.

24HR IN CAMP RESOURCE

EMERGENCY SHIFT TICKET and EVALUATION FORM
The responsible Government Officer will complete this form each shift.

Contractor Name: **THE BEST CAMP LLC**
Operator #1: **FIRST & LAST**
Operator #2: **FIRST & LAST**

Incident or Project Name: **MISSION**
Incident Number: **CA-MMU-018115**
Request Number: **E-333**

Agreement Number: **MMU-0000015950**
Equipment Make: **TENT**
Equipment Model / Type: **20 X 30**
Serial Number: **COMPLETE VIN#**

Operator Furnished By: Contractor Government
Operating Supplies Furnished By: Contractor Government

Equipment Status: Inspected Under Agreement
Released by Government:
Withdrawn by Contractor:

Remarks/Comments**
4 X 600 SOFT

Date Mo./Day	Start	Stop	Work	Days / Miles
9/2	0001	2400	24	ICP

Vendor Rating: **COMPLETE VIN#**

Poor* Avg. Good Exc. N/A

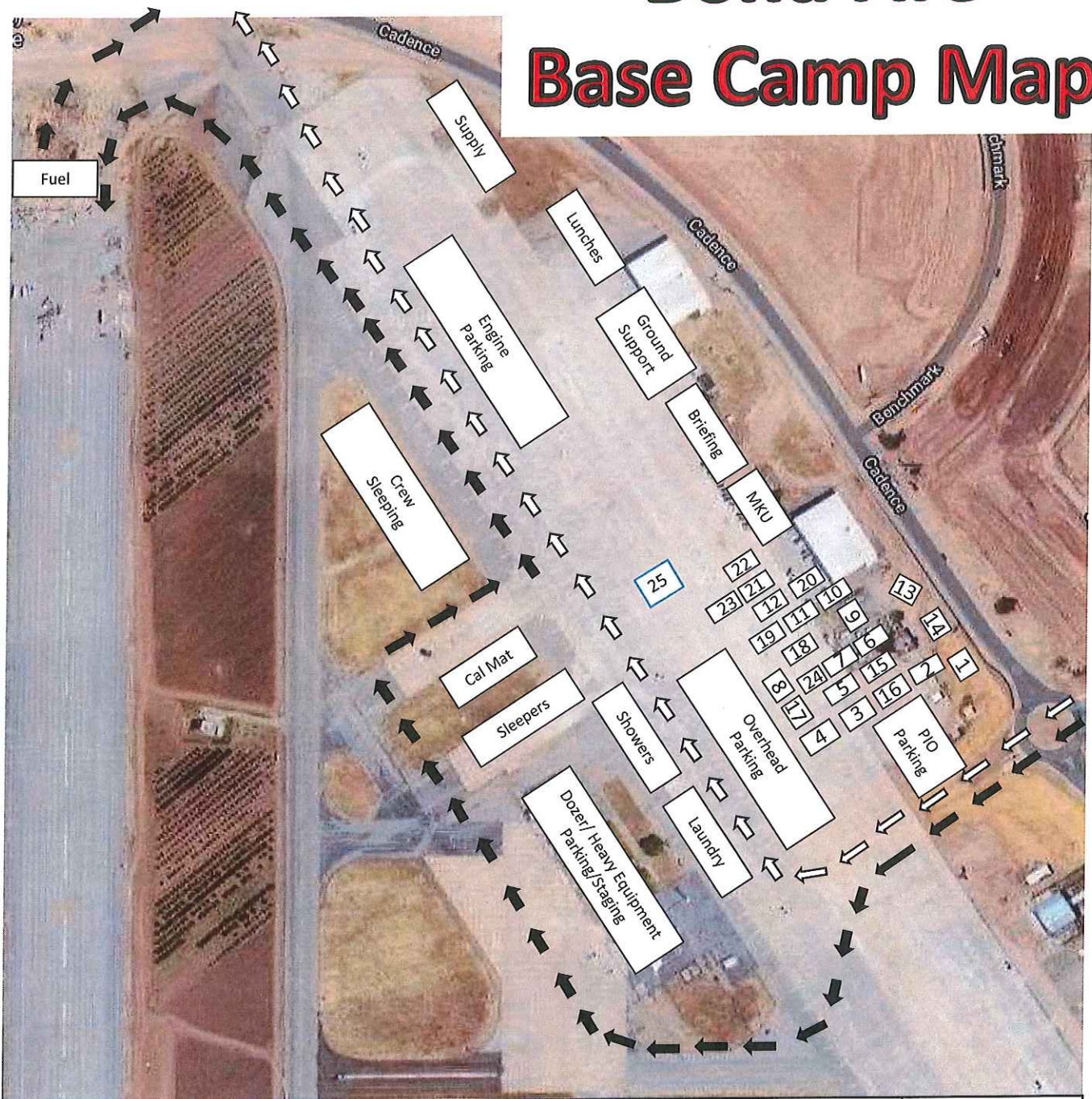
Met Performance Expectations
Equipment in Safe Working Condition
Operator Skill Level
Operates Safely
Operator's Cooperation Level
Overall Performance

Print Your Name: **Yours Signature**
Govt. Rep. Signature: **John Smith**
Contractor Signature: **John Smith**
Date: **9/2/20** Time: **1900**

* NOTE: any rating of POOR requires an explanation in Comment Section.
** Final evaluation or for more documentation, use a CALFIRE Form 230 or equivalent.

This Page Intentionally Left Blank

Bond Fire Base Camp Map



1 PIO	5 Ordering	9 Situation Unit	13 IC	17 Resources	21 FDUL
2 Safety	6 Training	10 Motels	14 OPS	18 InciNet	22 Facilities
3 Liaison	7 Clerical	11 Comp Claims/ Procurement	15 Meeting Area	19 Finance	23 Radio Cloning
4 Check-In/ Demob	8 Equipment Time	12 Comms	16 LE	20 OES	24 PTRC/ Cost
25 MEDL					

