

*** CORRECTED ***

INCIDENT ACTION PLAN BOND INCIDENT

CA-ORC-136890

Tuesday

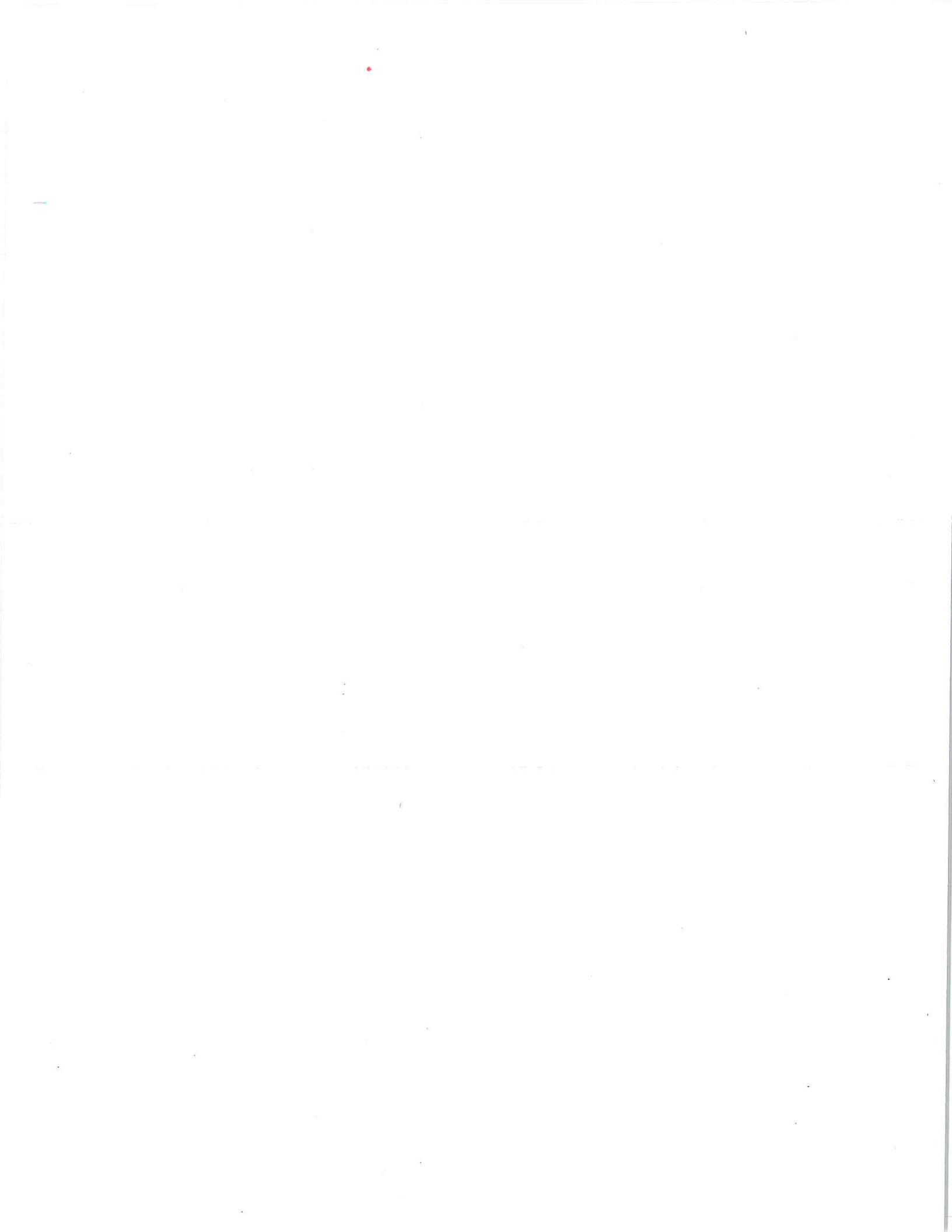


OPERATIONAL PERIOD

12/8/2020 0700
to
12/9/2020 0700



Briefing Frequency - CDF Tac 24



INCIDENT OBJECTIVES (ICS 202)

1. Incident Name: <p style="text-align: center;">Bond</p>	2. Operational Period:	Date From: 12/8/2020 Time From: 0700	Date To: 12/9/2020 Time To: 0700
--	-------------------------------	---	-------------------------------------

3. Objective(s):

Management Objectives

- Provide for and maintain Public and First Responder safety by utilizing the incident safety analysis process.
- Ensure COVID-19 precautions and best practices are met at all times.
- Protect values at risk; including infrastructure, improvements, private and public lands, natural and cultural resources.
- Foster and maintain relationships with all cooperators and stakeholders.
- Ensure coordinated, timely and accurate release of public information.
- Be financially responsible for all management and fire suppression tactics.

Control Objectives

- Keep the fire North of Live Oak Road
- Keep the fire South of Black Star Canyon
- Keep the fire East of 241 Toll Road
- Keep the fire West of North Main Divide

General Situational Awareness:

Steep and rugged terrain, critically dry and receptive fuel beds, active area for fire history and drought stressed trees.

In the COVID-19 environment, high density populations or large groups are particularly at risk. To help protect yourself, your family, and to ensure all employees return home safely, make sure to practice social distancing.

Enhanced hygiene (especially handwashing), PPE & monitoring practices help limit the infection rate of first responders.

5. Site Safety Plan Required? Yes No

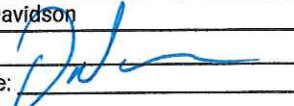
Approved Site Safety Plan(s) Located at:

6. Incident Action Plan

<input checked="" type="checkbox"/> ICS 203	<input checked="" type="checkbox"/> ICS 215A	<input checked="" type="checkbox"/> PIO Message	<input checked="" type="checkbox"/> COVID Message
<input checked="" type="checkbox"/> ICS 204	<input checked="" type="checkbox"/> ICS 220	<input checked="" type="checkbox"/> Training Message	<input checked="" type="checkbox"/> Shift Ticket Example
<input checked="" type="checkbox"/> ICS 205	<input checked="" type="checkbox"/> Facility Maps	<input checked="" type="checkbox"/> Travel Map	<input checked="" type="checkbox"/> CAL FIRE-101 Supply Form
<input checked="" type="checkbox"/> ICS 206	<input checked="" type="checkbox"/> Weather Forecast	<input checked="" type="checkbox"/> Demob Plan	<input type="checkbox"/>
<input checked="" type="checkbox"/> ICS 208	<input checked="" type="checkbox"/> Fire Behavior	<input checked="" type="checkbox"/> Finance Message	<input checked="" type="checkbox"/> ICS 214

7. Prepared By: Dave Shy	Position/Title: PSC	Signature: <u>David Shy</u>
8. Approved by Incident Commander:	Eddy Moore	Signature: <u>Eddy Moore</u>

ORGANIZATION ASSIGNMENT LIST (ICS 203)

1. Incident Name: Bond		2. Operational Period: Date From: 12/8/2020		Date To: 12/9/2020	
		Time From: 0700		Time To: 0700	
3. Incident Commander(s) and Command Staff:			7. Operation Section:		
IC/UC's	Eddy Moore, Ron Roberts, Stan Hill, Jose's Walehwa,	Operations	Josh Bischof, Mike Petro (T)		
Deputy	Charlie Blankenheim (T), Darryl Laws (T)	Deputy Operations	Shane Laurderdale, Shawn Raley, Craig Covey (T)		
Safety Officer	Doug Ferro, Jack Piccinini, Bill Murphy(T)	Night Ops	Monty Smith		
Information Officer	Steve Kaufmann, Chris Harvey(T), Thanh Nguyen	Staging Area	Great Park	Gordon Levine	
Liaison Officer	Dave Pender, Mitch Villalpando, Rob Capobianco (T)	Branch	I/V	John Fredrick	
LELO	Josh Allen, LT. Anthony Bertain	Division/Group	B/Y	Jason Novak, Ronald Earls (T)	
		Division/Group	D/E	Hector Medrano(12), Jonathan Pangburn (T) - Ron Earls (T)	
Agency/Organization	Name	Division/Group	M/T	Dan Bonfante	
OCFA	Kenny Dossey	Division/Group			
USFS	Darrell Vance	Division/Group			
OCSO	Mke Peters	Division/Group			
CALFIRE	Barry Owens	Division/Group			
Care Ambulance	Jeremy Ruga	Division/Group			
OC Parks	Chris Lorenzi	Division/Group			
CHP	David Rodgers	Division/Group			
OC EOC	Kevin McArthur	Division/Group			
Caltrans	Ramone Torres	Branch	Suppression Repair	Henry Herrera	
SCE	Scott Brown	Division/Group	Suppression Repair	Alvin Taylor	
Capstone	Terry Bowen	Division/Group			
IRWD	Bill Wesson	Division/Group			
Cal OES	Dave Stone	Division/Group			
		Division/Group			
5. Planning Section:					
Chief	Dave Shy, Kevin Fetterman (T)	Division/Group			
Deputy	Gabe Garcia	Division/Group			
Resource Unit	Gwyndolyn Ozard, Nochella Funes, Brian Torosian(T)	Division/Group			
Situation Unit	Denny O'Neil, Brandon Strohhahn, Coby Dyche (T)	Branch			
Documentation Unit	Allyson Liang, Tamara Anderson (T)	Division/Group			
Demobilization Unit	Chris Lynch, Floyd Horn	Division/Group			
GISS	Dan Dresselhaus, Rebecca Kriha	Division/Group			
FBAN	Tim Chavez	Division/Group			
IMET	Rich Thompson	Division/Group			
DINS	Nick Pivaroff	Air Operations Branch		Director:	Greg Bradshaw
TNSP	Dennis Martin	Air Support Group Supervisor		Jonathan Keesee, Ray Gomez (T)	
		Air Tactical Group Supervisor			
6. Logistics Section			Helibase Manager		
Chief	Matt Reich, Scott Ashbach		Rick Boman		
Deputy					
Supply	Steve Dohman	8. Finance/Administration Section:			
Facilities Unit	Matt Brown, Jason Wilson (T) Mark Mollet	Time Unit	Greg Tunzi		
Ordering Unit	Daniel Williams, Marc Cornelison	Procurement Unit	Courtney Arebalo		
Communications Unit	Mike Heyfron, Eric White	Comp/Claims Unit	Sean Bowe		
Medical Unit	Steve McGary, Rob Reed	Cost Unit	Angela Davidson		
Motel Unit	Dawn Muschetto				
Prepared By: Name:	David Shy	Position/Title:	PSC	Signature:	
ICS 203		Date/Time:	12/7/2020 2000 hours		

Fire and COVID-19 Briefing Checklist

Self-Awareness / Screening

- Immediately separate yourself from others.
- Notify supervisor if you or others experience:
 - Cough, more than expected
 - Shortness of breath or difficulty breathing
 - New loss of taste or smell
 - Fever
 - Chills
 - Sore throat
 - Muscle pain
- Review and follow crew and division plans to isolate, triage, and transport symptomatic personnel.

Hygiene on the Fireline

- Properly wash or sanitize your hands often, especially before and after eating or entering a public place, and after coughing or sneezing.
- Avoid handshakes and communal use items.
- Maintain a supply of hand sanitizer and hand wipes. Inform supervisor of needed resupply.
- Disinfect high touch surfaces often:
 - Radios, phones, doors, pumps, fuel cans, etc.

Social Distancing and Protective Equipment

- Initiate, practice, and remind others of social distancing.
- Conduct briefings and conversations outdoors and at least 6 feet apart.
- Utilize face coverings as a tool when practical.
- Clean or replace dirty face coverings, equipment, and PPE.

Communications

- Face coverings and social distancing complicate communications.
Ensure effective sender/receiver messaging.

Protect yourself, your crew, and your camp!

Find more information: <https://www.nwccg.gov/coronavirus>.



INCIDENT Weather Forecast



FORECAST NO: 5
 PREDICTION FOR: 24 hour SHIFT
 SHIFT DATE: 12/8/20 – 12/9/20 (0700-0700)

NAME OF FIRE: Bond

UNIT: OCFA, CalFire

SIGNED:

Rich Thompson

Incident Meteorologist

TIME AND DATE

FORECAST ISSUED: 12/7/20 @ 1800

DISCUSSION: ...RED FLAG WARNING UNTIL 1000 PM THIS EVENING...

Moderate Santa Ana winds will continue across the area through the operational period. Northeasterly winds will peak in strength this morning, gusting 30 to 50 MPH. However through this afternoon and evening, the winds will gradually diminish. Relative humidity will remain very low today in the teens and single digits with limited recovery tonight and Wednesday morning. **Critical fire weather conditions will continue through this evening.**

On Wednesday, northeast winds will continue through the morning hours, but will shift to the southwest/upvcanyon direction in the afternoon and evening hours. For Thursday and Friday, weak onshore flow will return to the area with cooler temperatures and higher relative humidity.

WEATHER FORECAST:

WEATHER: Partly cloudy.

TEMPERATURES: Max: 72-82.
 Min: 54-60.

HUMIDITY: Min: 8-15%.
 Max: 12-22%.

20 FT WINDS:
RIDGETOP -
 0700-1100: Northeast to east 15-25 MPH Gust 30-45 MPH.
 1100-1800: Northeast to east 10-20 MPH Gust 25-35 MPH.
 1800-0700: Northeast to east 8-15 MPH Gust 20-25 MPH.

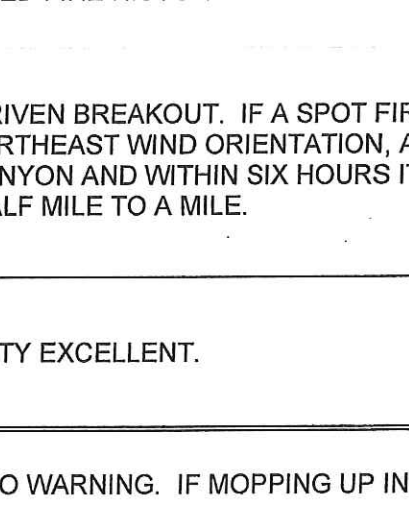
SLOPE/VALLEY -
 0700-1100: Northeast 15-25 MPH Gust 35-50 MPH.
 1100-1800: Northeast 10-20 MPH Gust 25-40 MPH.
 1800-0700: Northeast 8-15 MPH Gust 20-30 MPH.

EXTENDED FORECAST:

Wednesday: Mostly clear. High temperatures 68-76. Low temperatures 50-58. Minimum RH: 8-18%. Maximum RH: 20-35%. Northeast winds 8-15 MPH with gusts 20-30 MPH, becoming southwest/upcanyon 5-10 MPH with gusts to 15 MPH in the afternoon and evening.

Thursday/Friday: Mostly clear. High temperatures 64-72. Low temperatures 48-56. Minimum RH: 25-40%. Maximum RH: 45-60%. Light and variable winds night and morning hours, southwest/upcanyon winds 6-12 MPH with gusts to 20 MPH in the afternoon and evening hours.

FIRE BEHAVIOR FORECAST

FORECAST NUMBER: 5	TYPE OF FIRE: WILDFIRE
FIRE NAME: BOND	OPERATIONAL PERIOD: 12-8-2020 24 HR
DATE ISSUED: 12-7-2020	TIME ISSUED: 1900
UNIT: ORANGE COUNTY, CLEVELAND NF	SIGNED: 
Typed/printed: TIM CHAVEZ, FBAN	

INPUTS

WEATHER SUMMARY:

SANTANA WINDS WEAKEN FOR THE OPERATIONAL PERIOD. SEE IMET FORECAST

OUTPUTS

FIRE BEHAVIOR

GENERAL:

IT HAS BEEN 243 DAYS SINCE RAINFALL OF OVER ½ INCH WAS RECORDED IN THIS AREA. RECORD SETTING LOW 100 HOUR AND 1000 HOUR FUEL MOISTURES FOR THIS TIME OF YEAR. LIVE FUEL MOISTURE IN CHAMISE IS AT CRITICAL LEVEL. ENERGY RELEASE COMPONENT FOR FREMONT CYN RAWS IS BREAKING RECORDS EACH DAY. EXTREMELY POOR HUMIDITY RECOVERY WILL WORSEN CONDITIONS AS THE WEEK UNFOLDS.

SPECIFIC:

DIVISION M-T

VERY LIGHT FUELS WILL PROBABLY NOT HARBOR ANY LATENT HEAT. IF ANY RIPARIAN AREAS ARE SMOLDERING, THEY MAY THREATEN THE LINE ON THE WEST SIDE OF IRVINE LAKE. SOME SCORCHED CANOPY IN THE LIMESTONE CANYON AREA MAY BE REBURN HAZARD.

DIVISION B-Y

OAKS AND BRUSH WITH SCORCHED CANOPY ARE WIDESPREAD IN THIS DIVISION. THIS COULD RESULT IN REBURN BUT PROBABLY NOT HAVE THAT MUCH POTENTIAL TO SPREAD OUTSIDE THE LINE. THE ORIENTATION OF SILVERADO CANYON COULD FUNNEL WINDS. THE AREA NORTH OF THE LINE IN THIS DIVISION HAS NO RECORDED FIRE HISTORY.

DIVISION D-E

THIS END OF THE FIRE HAS THE MOST POTENTIAL FOR A WIND DRIVEN BREAKOUT. IF A SPOT FIRE GETS ESTABLISHED IN WILLIAMS CANYON OR MODJESKA, WITH THE NORTHEAST WIND ORIENTATION, A MAJOR RUN IS POSSIBLE. WITHIN AN HOUR IT WILL CROSS SANTIAGO CANYON AND WITHIN SIX HOURS IT WILL CROSS HIGHWAY 241. MAXIMUM SPOTTING DISTANCE WILL BE HALF MILE TO A MILE.

AIR OPERATIONS:

TURBULENT FLOW OVER RIDGE TOPS WILL BE A HAZARD. VISIBILITY EXCELLENT.

SAFETY

- WIND WILL CAUSE FIRE WEAKENED TREES TO FALL WITH NO WARNING. IF MOPPING UP IN THESE AREAS LIMIT TIME AND POST A LOOKOUT.
- SCOUT FOR TEMPORARY REFUGE AREAS (TRA'S) EARLY IN THE SHIFT ANTICIPATING THE RISK OF SPOT FIRES WITH WIND DRIVEN RUNS.
-

ASSIGNMENT LIST (ICS 204 WF)

CONTROLLED UNCLASSIFIED
INFORMATION/BASIC

1. Incident Name: <p style="text-align: center; font-size: 1.2em;">Bond</p>	2. Operational Period: Date From: 12/08/20 Date To: 12/09/20 Time From: 0700 Time To: 0700	3. Branch <p style="text-align: center; font-size: 1.5em;">IV</p>	Division <p style="text-align: center; font-size: 1.5em;">D/E</p>
4. Operations Personnel:		Page 1 of 1	Delta

Operations Section Chief: Josh Bischof, Mike Petro (T)	Night Ops: Monty Smith
Branch Director: John Fredrick <i>Ron Earls (T)</i>	Branch Safety:
Division/Group Supervisor: Hector Medrano(12), Jonathan Pangburn (T)	Air Attack:

5. Resources Assigned:		** Resources Below in Bold are 12 Hour **					Hours	Reporting Location
Resource Identifier	ALS	LWD	Leader	Personnel	Request #			
STA ORC 1402A	Y		TRUHILL, JUSTIN	22	E-33	0700-1900	Santiago Cyn. x Modjeska Cyn.	
STC BEU 9460C			ALLEN, JAMES	18	E-37	0700-0700	Santiago Cyn. x Modjeska Cyn.	
STC SHF 3675C			STILES, EZRA	18	E-29	0700-1900	Santiago Cyn. x Modjeska Cyn.	
<i>STG AEU 9275G → Demob</i>			BOYCE, MICHAEL	33	C-28	0700-1900	Santiago Cyn. x Modjeska Cyn.	
STG BDU 9352G			HYNES, STEVE	33	C-5	0700-0700	Santiago Cyn. x Modjeska Cyn.	
CRW1 SHF MODULE			SCHWEDHELM, JOSEPH	10	O-227	0700-1900	Santiago Cyn. x Modjeska Cyn.	
CRW2 I/A KNF 1			BUTCHER, PAUL	18	C-11	0700-1900	Santiago Cyn. x Modjeska Cyn.	
W/T ORC 4			LAMBETH, STACY	1	E-112	0700-1900	Santiago Cyn. x Modjeska Cyn.	
SOFR BAUER			BAUER, LUCAS	1	O-84	0700-1900	Santiago Cyn. x Modjeska Cyn.	
SOFR FLORES			FLORES, MARK	1	O-282	0700-1900	Santiago Cyn. x Modjeska Cyn.	
FEMP CONNER	Y		CONNER, JASON	1	O-219	0700-1900	Santiago Cyn. x Modjeska Cyn.	
FEMP KENNEDY	Y		KENNEDY, DAVID	1	O-163	0700-1900	Santiago Cyn. x Modjeska Cyn.	
<i>STG RRU 9315G ← staging</i>			<i>HATCH, JOE</i>	<i>28</i>	<i>C-23</i>	<i>0700-1900</i>	<i>"</i>	

6. Work Assignments:

Hold and improve control lines to mitigate threat of fire escaping.
Mop up 300' interior to eliminate threat to the fire line.
Perform tactical patrol around structures for the potential of new starts.
Mop up 300' around structures to prevent structure damage, and alleviate citizen concerns.
Identify and document suppression repair needs to facilitate timely completion of repairs.
Backhaul excess trash/hose/water.

7. Special Instructions:

BOND COMMUNICATIONS PHONE # 805-903-3489

8. Communications

Name	Ch	Function	Rx Freq	Rx Tone	Tx Freq	Tx Tone	Notes
Fire OC	1	COMMAND	151.0100	123.0 (T2)	154.9650	123.0 (T2)	ALL DIVISIONS
CDF T31	5	TACTICAL	159.3825	192.8 (T16)	159.3825	192.8 (T16)	BRANCH IV
CDF T23	14	AIR TO GROUND	159.4500	192.8 (T16)	159.4500	192.8 (T16)	AIR TO GROUND
CALCORD	15	MEDICAL	156.0750	156.7(T6)	156.0750	156.7(T6)	MEDICAL
AIRGUARD	16	AIRGUARD	168.6250		168.6250	110.9 (T1)	***EMERGENCY ONLY***

9. Prepared by: Name: Brian Torosian RESL(T)

Signature:

ICS 204 Date/Time: 12/7/2020 2200 Personnel Count: 157

ASSIGNMENT LIST (ICS 204 WF)

CONTROLLED UNCLASSIFIED
INFORMATION//BASIC

1. Incident Name: <p style="text-align: center; font-size: 1.2em;">Bond</p>	2. Operational Period: Date From: 12/08/20 Date To: 12/09/20 Time From: 0700 Time To: 0700	3. Branch Group Suppression Repair Suppression Repair
4. Operations Personnel:		Page 1 of 1

Operations Section Chief: Josh Bischof, Mike Petro (T)	Night Ops: Monty Smith
Branch Director: Henry Herrera	Branch Safety:
Division/Group Supervisor: Alvin Taylor	Air Attack:

5. Resources Assigned:		** Resources Below in Bold are 12 Hour **					
Resource Identifier	ALS	LWD	Leader	Personnel	Request #	Hours	Reporting Location
CRW2 I/A BLM SRV #7			M, CARL	19	C-10	0700-1900	ICP
CRW2 BIA SHINGLE SPRINGS 42			AROS, DRAKE	13	C-1	0700-1900	ICP
DOZ ORC 1			SMITH, BRENT	1	E-199	0700-1900	ICP
DOZ ORC 2			PERRAULT, ALAN	1	E-15	0700-1900	ICP
DOZ ORC 3			HAHN, DAVID	1	E-16	0700-1900	ICP
DOZ PVT E-201 - BLACK CAT			FUKUDA, ADRIAN	1	E-201	0700-1900	ICP
DOZ PVT E-202 -ZX AG			NIEBLAS, COLEMAN	2	E-202	0700-1900	ICP
W/T PVT E-203 - DOC'S WATER			EDWARDS, RICH	1	E-203	0700-1900	ICP
W/T PVT E-204 - DOC'S WATER			VAINE, JOE	1	E-204	0700-1900	ICP
W/T+ W/T PVT E-212 J&M			DUNGAN, JACKIE	1	E-212	0700-1900	ICP
W/T+ W/T PVT E-213 Bendalls			NEILSON, CASEY	1	E-213	0700-1900	ICP
EXC ORC 1			GARCIA, PATRICK	1	E-211	0700-1900	ICP
GRD ORC GRADER 1			BROWN, DAN	1	E-205	0700-1900	ICP
SKID ORC SKID STEER 1			FITTLE, PIERCE	1	E-206	0700-1900	ICP
HEQB ORONA (T)			ORONA, JOSEPH CHRISTIAN	1	O-365	0700-1900	ICP
FSRS ERICKSON			ERICKSON, DAVID	1	O-270	0700-1900	ICP
FOBS CASWELL			CASWELL, CHRISTIAN	1	O-64	0700-1900	ICP
REAF KNAPP			KNAPP, TRACY SAMANTHA	1	O-306	0700-1900	ICP

6. Work Assignments:
Identify and document suppression repair needs to facilitate timely completion of repairs.
Implement Suppression Repair Plan.

FOBS TORRES O-57 ← unassigned
HEQB PIETRCZAK PIETRCZAK, DAVID, O-367 ← unassigned
READ GNADT O-347

7. Special Instructions:

BOND COMMUNICATIONS PHONE # 805-903-3489

8. Communications

Name	Ch	Function	Rx Freq	Rx Tone	Tx Freq	Tx Tone	Notes
Fire OC	1	COMMAND	151.0100	123.0 (T2)	154.9650	123.0 (T2)	ALL DIVISIONS
CDF T32	6	TACTICAL	151.2425	192.8 (T16)	151.2425	192.8 (T16)	ALL DIVISIONS
CDF T23	14	AIR TO GROUND	159.4500	192.8 (T16)	159.4500	192.8 (T16)	AIR TO GROUND
CALCORD	15	MEDICAL	156.0750	156.7(T6)	156.0750	156.7(T6)	MEDICAL
AIRGUARD	16	AIRGUARD	168.6250		168.6250	110.9 (T1)	***EMERGENCY ONLY***

9. Prepared by: Name: Brian Torosian RESL(T)

Signature:

ICS 204 Date/Time: 12/7/2020 2200 Personnel Count: 47



SAFETY MESSAGE

Bond Fire

CA-ORC-136890 December 8, 2020 0700-0700



AWARENESS

Watch Out

- Return of Red Flag conditions
- Possible preemptive power shut off to affected areas
- Residents back in their homes and on the roads

Mitigation

- Keep up to date on current and predicted weather and fire behavior
- Confirm safety briefings with your crews
- Expect questions and public relations opportunities from residents

ROAD HAZARDS

Watch Out

- Power and cellular crews continuing work on infrastructure repair
- Road repairs continuing in several areas
- Residents driving in all areas, some on UTV's

Mitigation

- Expect interrupted and possibly congested travel on roads
- Turn on emergency lights and use cones for your safety when parked
- Be aware of speed limits and safety issues while driving

DEMOB

Watch Out

- Tired crews are ready to go home or perhaps head to a new assignment
- There will be an increase in backing and maneuvering vehicles in tight spots
- Dirty cabs, tight quarters and used equipment can be receptive for infection

Mitigation

- Ensure drivers are well rested and rotated on long drives home
- Drive cautiously in and around ICP and demob pedestrian traffic
- Take time to decontaminate your cab and equipment to reset cleanliness

COVID-19

REDUCE THE EXPOSURE AND SPREAD BY:

- **Wear a face covering when:**
 - ✓ In public and unable to maintain six feet of social distance
 - ✓ When at the ICP and unable to maintain six feet social distance
 - ✓ At all times when you are in the food line

Jason Williams

CAL FIRE IMT TEAM 4 SAFETY(T)

REDUCE EXPOSURE BY WEARING A FACE COVERING

S
A
F
E
T
Y

S
A
F
E
T
Y

S
A
F
E
T
Y

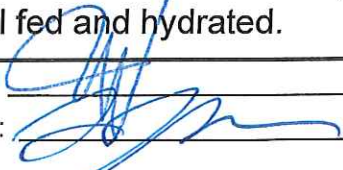

E
V
E
R
Y
O
N
E
S

R
E
S
P
O
N
S
I
B
I
L
I
T
Y




INCIDENT ACTION PLAN SAFETY ANALYSIS (ICS 215A)



1. Incident Name: Bond		2. Incident Number: CA-ORC-136890
3. Date/Time Prepared: Date: 12/07/2020 Time: 1700		4. Operational Period: Date From: 12/08/2020 To: 12/09/2020 Time From: 0700 hours To: 0700 hours
5. Incident Area	6. Hazards/Risks	7. Mitigations
ALL	Potential for Extreme Fire Behavior due to Red Flag conditions	Critically dry fuels, very low humidity, high wind speeds, no rain in over six months.
ALL	COVID-19: Reduce exposure potential to yourself, your crew, and the public	<u>Wear a mask</u> while in the ICP, while in line for food, and when six feet of social distancing is difficult. Wash hands frequently for at least 20-seconds.
ALL	Power lines are being tested and reenergized in all areas	Be aware of increased hazard and potential for issues from homes and infrastructure being reenergized.
DIV B, E, Y	Narrow roadways and more traffic from all residents back in homes	Turn lights on, observe speed limits and expect vehicles opposing traffic. Plan for extended travel times.
DIV B, D, E, Y	Spotty communications for VHF and Cellular	Review ICS 205 and ensure radio clone is current. Use human repeaters if necessary.
DIV B, D	Steep, unstable terrain and roll-out	Watch footing and maintain downhill tool placement. Be aware of loose material. Look for ash pits and stump holes.
ALL	Potential Helicopter Use for Fire Attack or Firefighter Rescue	Monitor A/G. Watch overhead for hazard trees and wind changes.
ALL	Driving Hazards	DRIVE SLOW- do a walk around before moving your vehicle; Drive with headlights on; drive defensively; Utilize spotters and backers when conditions require; scout out assignments before committing position.
ALL	Tired Crews - End of a very long fire season	Maintain a safe work/rest ratio, stay well fed and hydrated.
8. Prepared by (Safety Officer): Name: Jason Williams		Signature: 
Prepared by (Deputy Operations Section Chief): Name: Shawn Raley		Signature: 
ICS 215A		Date/Time: 12/07/2020 1700hrs

ICS 205 - INCIDENT RADIO COMMUNICATIONS PLAN

CONTROLLED UNCLASSIFIED
INFORMATION/BASIC

1. Incident Name: Bond		2. Date/Time Prepared Date: 12/07/2020 Time: 2120		3. Operational Period: Date From: 12/08/20 Time From: 0700		Date To: 12/09/20 Time To: 0700		
4. Communications								
Ch#	Function	Name	Assigned To	Rx Freq	Rx Tone	Tx Freq	Tx Tone	Notes
1	COMMAND	Fire OC	ALL DIVS	151.0100	123.0 (T2)	154.9650	123.0 (T2)	ALL DIVISIONS
2								
3	TACTICAL	CDF T24	DIV B/Y	151.3325	192.8 (T16)	151.3325	192.8 (T16)	BRANCH IV
4	TACTICAL	CDF T25	DIV M/T	159.2775	192.8 (T16)	159.2775	192.8 (T16)	BRANCH IV
5	TACTICAL	CDF T31	DIV D/E	159.3825	192.8 (T16)	159.3825	192.8 (T16)	BRANCH IV
6	TACTICAL	CDF T32	SUPP REPAIR	151.2425	192.8 (T16)	151.2425	192.8 (T16)	ALL DIVISIONS
7	TACTICAL	CDF T34	UNASSIGNED	151.4675	192.8 (T16)	151.4675	192.8 (T16)	
8	TACTICAL	VFIRE 23	UNASSIGNED	154.2950	156.7 (T6)	154.2950	156.7 (T6)	
9	TACTICAL	VFIRE 26	UNASSIGNED	154.3025	156.7 (T6)	154.3025	156.7 (T6)	
10								
11								
12								
13								
14	AIR TO GROUND	CDF T23	ALL DIVS	159.4500	192.8 (T16)	159.4500	192.8 (T16)	AIR TO GROUND
15	MEDICAL	CALCORD	ALL DIVS	156.0750	156.7(T6)	156.0750	156.7(T6)	MEDICAL
16	AIRGUARD	AIRGUARD	ALL DIVS	168.6250		168.6250	110.9 (T1)	***EMERGENCY ONLY***
17								
18								
19								
20	AIRGUARD	AIRGUARD	ALL DIVS	168.6250		168.6250	110.9 (T1)	***EMERGENCY ONLY***
5. Special Instructions								
*** THE LATEST CLONE FOR 12/08/20 IS "BOND1" WHICH IS THE TITLE OF THE GROUP, MORNING BRIEFING BROADCAST ON CDF TAC 24***								
6. Prepared by (Communications Unit Leader): Name: MIKE HEYFRON				Signature: 		Date/Time: 12/07/20 2120		
ICS 205 - CONTROLLED UNCLASSIFIED INFORMATION/BASIC								

Signature: 

Date/Time: 12/07/20 2120

NIMS IAP

2120

MEDICAL PLAN (ICS 206)

1. Incident Name: <div style="text-align: center;">Bond</div>	2. Operational Period: Date From: 12/8/20 Date To: 12/9/20 Time From: 0700 Time To: 0700
---	--

3. Medical Aid Stations:			
Name	Location	Contact Number/Freq	Paramedics
CAL MAT (medical assistance team)	Bond ICP	Command	MD
Care Ambulance X-Ray 1	Bond ICP	Command	NO

4. Transportation (indicate air or ground):			
Ambulance Service	Location	Contact Number	Level of Service
Care Ambulance X-Ray 2	DP55 (Irvine Lake)	Command	BLS
Care Ambulance X-Ray 3	OCCA Station 15	Command	BLS
ORC Copter 1 (Hoist & NVG)	El Toro Helibase	Command	ALS

5. Hospitals:							
Hospital Name	Address,	Contact Number(s)/ Frequency	Travel Time		Trauma Center	Burn Center	Helipad
	Lat & Long Helipad		Air	Ground			
Mission Regional Medical Center	27700 Medical Center Rd Mission Viejo CA N33°33.65 W117°39.98	949-365-2108	5	14	Level 2	<input type="checkbox"/>	<input checked="" type="checkbox"/>
UC Irvine Medical Center	101 The City Dr, Orange CA N33°78.73 W117°88.83	714-456-6233	5	35	Level 2	<input checked="" type="checkbox"/>	<input checked="" type="checkbox"/>
OC Global Medical Center	1001 N.Tustin Ave Santa Ana CA N33°45.30 W117°49.97	714-953-3331	10	20	Level 1	<input checked="" type="checkbox"/>	<input checked="" type="checkbox"/>

6. Special Medical Emergency Procedures

<p>Line Emergency Crew Supervisor will contact Division Supervisor with patient complaint/condition and location.</p> <ul style="list-style-type: none"> - Division Group Supervisor Contacts: <ol style="list-style-type: none"> 1. Closest EMS resource 2. Communications Unit - Communications Unit Contacts: <ol style="list-style-type: none"> 1. Ground or Air ambulance as requested. 2. Operations 3. Safety 4. Medical Unit - Division Supervisor or designee will serve as point of contact and run medical emergency on assigned channel. <ol style="list-style-type: none"> 1. A pre-assigned tactical frequency (i.e. CALCORD) should be used for IWI and only for duration of the emergency. - Communications Unit will clear the Command channel for emergency traffic as needed for duration of the need. <p>Camp Emergency Contact Medical Unit with patient complaint/condition and location. Medical staff will respond to stabilize the patient.</p> <ul style="list-style-type: none"> - Medical Unit contacts <ol style="list-style-type: none"> 1. Communications 2. Safety 3. Logistics 4. Operations 5. Crew Supervisor 6. Comp/Claims 	<p>Injury Reporting Procedures</p> <p>Nature of Injury: _____ Location of Patient: _____ Point of Contact: _____ Transportation Requested by: Air _____ Ground _____ Point of Pick-Up: _____ Lat: _____ Long: _____ Patient Unit ID: _____ Is an EMT with Patient: Yes _____ No _____ Age: _____ Sex: Male _____ Female _____</p> <p>All Emergencies - Secure the area and identified witnesses for later investigation. Keep accurate log of events.</p>
---	---

Check box if aviation assets are utilized for rescue. If assets are used, coordinate with Air Operations.

7. Prepared by (Medical Unit Leader): <div style="text-align: center;">Steve McGary</div>	Signature:
---	------------

8. Approved by (Safety Officer): <div style="text-align: center;">Doug Ferro</div>	Signature:
--	------------



BOND INCIDENT FINANCE MESSAGE



FINANCE SECTION is located at the end of “trailer row” near overhead parking.

CAL FIRE TIME UNIT (Personnel and Hired Equipment)

- CAL FIRE PERSONNEL – make sure you have started your eFC-33’s and update after each shift. Please make sure Epay schedules are up to date.
- HIRED EQUIPMENT SUPPLIERS – Check in with the Time Unit and drop off your agreements.
- SHIFT TICKET BOOKS - Available in the Time Unit (agency personnel only).

DIVISION / GROUP - LINE SUPERVISORS

- Please make sure to turn in hired equipment shift tickets at the end of each shift.

COMP / CLAIMS

For Damage Claims (suppression, property, vehicle), report to Comp Claims using an ICS-213. We will need location, description of damages, and your contact information.

Please report all injuries and suppression damage to the Comp / Claims, no matter how minor.

TOLL ROAD FEES

If you are a government agency employee and have traveled any of the Orange County toll roads, please scan the QR CODE below, follow the link, and complete the Google form. This information will be used to request a waiver of toll road fees for you and your agency.

TOLL ROAD WAIVER FORM



Mara Zaver, FSC1
Roger Raines, FSC1

BOND FIRE
INFORMATION SHEET

Fire Information Line: (714) 504-2631

Please scan the QR Below for CAL FIRE's Social Media Policy 0691.



INCIDENT MAIL

The PIO Trailer will receive mail/packages shipped to the Incident. Please ensure all mail addressed to the incident follows the format below:

(YOUR NAME, YOUR ORDER NUMBER)
C/O BOND FIRE BASE CAMP
PUBLIC INFORMATION TRAILER
PUSAN WAY AT CADENCE WAY
ORANGE COUNTY GREAT PARK, IRVINE CA 92618

LOST AND FOUND

Any items that are found, please bring them to the PIO Trailer located at the entrance to Base Camp and leave them with PIO staff. If you lose something, please leave your name and contact information at the trailer and a description of lost items.



DMOB

BOND INCIDENT

CA-ORC-136890

- Resources must check-in prior to the Demobilization process.
 - In order to be deemed excess, supervisors must submit an ICS 213 to the Resources Unit.
 - Resources report to Demobilization Unit at the times posted on the tentative DMOB list, which is posted around the Incident Base and posted to the Box Account.
 - Prior to reporting to DMOB, please return all supplies and equipment.
 - Resources will get signatures from the following units:
 - Ground Support
 - Training (If they have a trainee)
 - Documentation
 - Time
 - DMOB
- The following will be done by radio at DMOB**
- Motels
 - Supply
 - Communications

Bond Fire Suppression Repair Guidelines for SRA

Mitigation of fire suppression damage will minimize the long-term impacts caused by fire suppression efforts, especially during rain events. The following actions will be implemented:

Hand Lines/Dozer lines

- Construct waterbars to mitigate the potential for accelerated erosion on exposed soils.
- Slash from felled trees adjacent to control line may be masticated, chipped, or lopped and scattered onto the control line where it will not compromise the fireline function.
- Berms and push-piles shall be spread out to the extent feasible.
- Soil and slash piled against trees or perched above watercourses is especially important to disperse.
- Where lines intersect trails, roads or other access point, redistribute vegetation heavily to disguise within 100 feet or line of sight, whichever is greater. In these locations, minimal additional cutting of vegetation may be conducted to provide sufficient material. **This will be done in a case by case basis as evaluated by division supervisor.**
- Create berms or use natural features (boulders, logs, etc.) to block vehicle access to dozer and hand lines wherever they intersect roads or trails.

Roads

- Clean culverts and plugged drainage facilities.
- Remove outside berms created during suppression activities and incorporate into road surface or re-establish existing berms where applicable.
- Install rolling dips where rolling dips previously existed or where needed.

Waterbars

Slope Gradient	Maximum Waterbar Spacing
0-10%	200'
11-25%	150'
26-50%	100'
>50%	75'

- Waterbars should be cut diagonally into firm soil at least 6" deep and have a berm at least 12" in height. Waterbars should have a 30-45 degree angle to the fall line.
- Outlets must be open and directed onto the least erodible material possible for energy dissipation and sediment filtration.

Watercourses

- All slash, loose soil and debris deposited into watercourses during suppression activities shall be removed and stabilized to the extent possible.

Hazard Trees

- Trees and snags that present a safety hazard as a result of suppression shall be felled.
- Slash from felled trees shall be lopped and scattered, chipped or masticated.

Fences, Gates and Other Improvements

- Fences and gates damaged by suppression efforts shall be repaired to pre-fire functioning standard.
- Other improvements shall be evaluated by a representative of the FSR group and/or the Comp./Claims Unit of Incident Management Team #4.

Staging Areas/Safety Zones

- Re-contour or outslope these areas if practical.
- Avoid very long waterbars.
- Slash pack in key areas to minimize erosion if slash is readily available

All trash, flagging and fire suppression supplies/equipment shall be collected and back-hauled to staging areas, drop points and/or base camp.

Bond Fire Suppression Repair Guidelines for Federal DPA

Mitigation of suppression damages will minimize the long-term impacts caused by personnel and equipment. The following actions will be implemented to minimize long-term impacts from suppression activities.

Dozer Lines

Dozer lines will be treated by pulling outside berms back into the control line, re-contouring or out-sloping the surface to allow for drainage, and where necessary, placing waterbars in the control line.

Water Bars

Waterbars should be constructed at logical discharge points and guided by the spacing criteria as follows:

Fireline slope (%)	Maximum Distance Apart (feet)
1-14	150
15-20	90
21-40	50
41+	25

Installed waterbars will consist of a minimum of a six inch (6") cut into the firm bed of the control line and have a berm with a compacted height of no less than eighteen inches (18"). The waterbars will be constructed diagonally across the control line at an angle of thirty-five to forty degrees. When dozer lines follow a ridge where there is no vegetation on either side, or where there is unburned vegetation on both sides, re-contouring and waterbars should be designed to divert water equally to both sides of the ridge.

Handlines

Hand lines will be rehabilitated to allow for drainage by re-contouring and construction of waterbars. Waterbars for hand lines should be cut to a depth equal to the width of a standard fire shovel. The waterbars will be constructed diagonally across the control line at an angle of thirty-five to forty degrees. The outside end of the waterbar must be open and should discharge into an area where the ground surface is protected by vegetation that is unburned, if possible. Trenching and berms, where present, will be removed and any topsoil available will be pulled back cross the hand line.

Helispots, Safety Zones, Drop Points, and Other Clearings

Berms will be pulled or raked back into the site. If needed, the site will be crowned to facilitate surface drainage and the vegetative material removed from the site will be lopped and scattered over the disturbed area to reduce erosion/unauthorized OHV potential.

Improvements

Improvements such as pipe barrier, fences, gates, guzzlers, flood control basins, drainage structures, drainage channel, culverts, and paved roads damaged by suppression activities will be repaired to pre-fire conditions.

All trash, flagging, and fire suppression supplies/equipment shall be collected and removed to staging areas, drop points or base camp.

TRAINING SPECIALIST MESSAGE

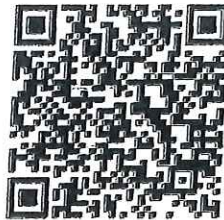
**A Training Specialist is available for trainees on
the incident.**

**All State, Federal and local government agency
Trainees working on Position Task Books will
need to register with the Incident Training
Specialist in order to receive proper credit for
your assignment.**

Training Specialist's

Dennis Martin

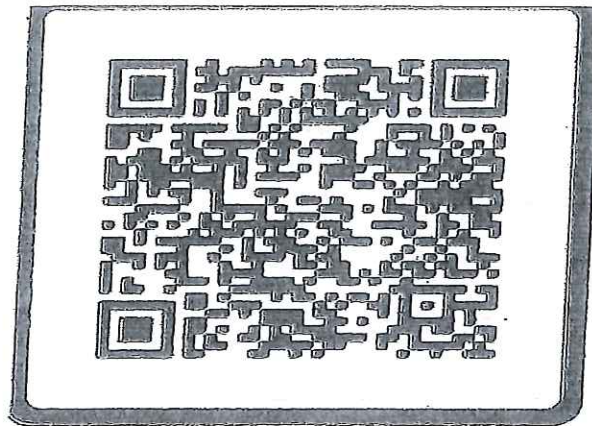
(707) 479-8421



Register using the QR Code

Trainee Message

If you would like to CHECK-OUT / CLOSE OUT your packet with the Training Specialist, please scan the QR code, fill in "ALL" information and "click" submit.



Your completed packet will be emailed back to you

If you have any questions or concerns, please feel free to contact me.

Training Specialist

Dennis Martin

(707) 479-8421

Dennis.martin@cityofvallejo.net



CAL-FIRE INCIDENT MANAGEMENT TEAM 4



24HR LINE RESOURCE - 2 OPERATOR

EMERGENCY SHIFT TICKET and EVALUATION FORM
The responsible Government Officer will complete this form each shift.

Incident or Project Name: MISSION
Request Number: E-444
Agreement Number: CA-MMU-018115

Contractor Name: THE BEST DOZERS LLC
Operator #1: FIRST & LAST
Operator #2: FIRST & LAST

Equipment Make: 1999 PETERBILT 379
Equipment Model / Type: TRANSPORT 18 WHEEL
License Number: 12345A1

Equipment Use (Circle): Work Days / Miles: 7 / DIV X

Date Mo / Day	Start	Stop	Work
9/5	0701	2400	17
9/6	0001	0700	7

Vendor Rating: DIV X

Met Performance Expectations: VENDOR RATING MUST BE DONE

Operator Skill Level: VENDOR RATING MUST BE DONE

Operator's Cooperation Level: VENDOR RATING MUST BE DONE

Overall Performance: VENDOR RATING MUST BE DONE

* NOTE: any rating of POOR requires an explanation in Comment Section.
** Final evaluation or for more documentation, use a CALFIRE Form 230 or equivalent.

24HR / 12HR TRANSITION SHIFT TICKET

EMERGENCY SHIFT TICKET and EVALUATION FORM
The responsible Government Officer will complete this form each shift.

Incident or Project Name: MISSION
Request Number: E-444
Agreement Number: CA-MMU-018115

Contractor Name: THE BEST DOZERS LLC
Operator #1: FIRST & LAST
Operator #2: FIRST & LAST

Equipment Make: 1999 PETERBILT 379
Equipment Model / Type: TRANSPORT 18 WHEEL
License Number: 12345A1

Equipment Use (Circle): Work Days / Miles: 7 / DIV X

Date Mo / Day	Start	Stop	Work
9/6	0701	1900	12
9/6	1901	2400	5

Vendor Rating: OFF SHIFT

Met Performance Expectations: VENDOR RATING MUST BE DONE

Operator Skill Level: VENDOR RATING MUST BE DONE

Operator's Cooperation Level: VENDOR RATING MUST BE DONE

Overall Performance: VENDOR RATING MUST BE DONE

* NOTE: any rating of POOR requires an explanation in Comment Section.
** Final evaluation or for more documentation, use a CALFIRE Form 230 or equivalent.

12HR LINE RESOURCE - 1 OPERATOR

EMERGENCY SHIFT TICKET and EVALUATION FORM
The responsible Government Officer will complete this form each shift.

Incident or Project Name: MISSION
Request Number: E-555
Agreement Number: CA-MMU-018115

Contractor Name: THE BEST DOZERS LLC
Operator #1: FIRST & LAST
Operator #2: -

Equipment Make: 2004 CAT
Equipment Model / Type: D6N / TYPE II E
License Number: MMU-0000015955

Equipment Use (Circle): Work Days / Miles: 7 / OFF SHIFT

Date Mo / Day	Start	Stop	Work
9/7	0001	0700	7
9/7	0701	1900	12
9/7	1901	2400	5

Vendor Rating: OFF SHIFT

Met Performance Expectations: VENDOR RATING MUST BE DONE

Operator Skill Level: VENDOR RATING MUST BE DONE

Operator's Cooperation Level: VENDOR RATING MUST BE DONE

Overall Performance: VENDOR RATING MUST BE DONE

* NOTE: any rating of POOR requires an explanation in Comment Section.
** Final evaluation or for more documentation, use a CALFIRE Form 230 or equivalent.

24HR IN CAMP RESOURCE

EMERGENCY SHIFT TICKET and EVALUATION FORM
The responsible Government Officer will complete this form each shift.

Incident or Project Name: MISSION
Request Number: E-333
Agreement Number: CA-MMU-018115

Contractor Name: THE BEST CAMP LLC
Operator #1: FIRST & LAST
Operator #2: -

Equipment Make: TENT
Equipment Model / Type: 20 X 30
License Number: MMU-0000015950

Equipment Use (Circle): Work Days / Miles: 24 / ICP

Date Mo / Day	Start	Stop	Work
9/2	0001	2400	24

Vendor Rating: ICP

Met Performance Expectations: VENDOR RATING MUST BE DONE

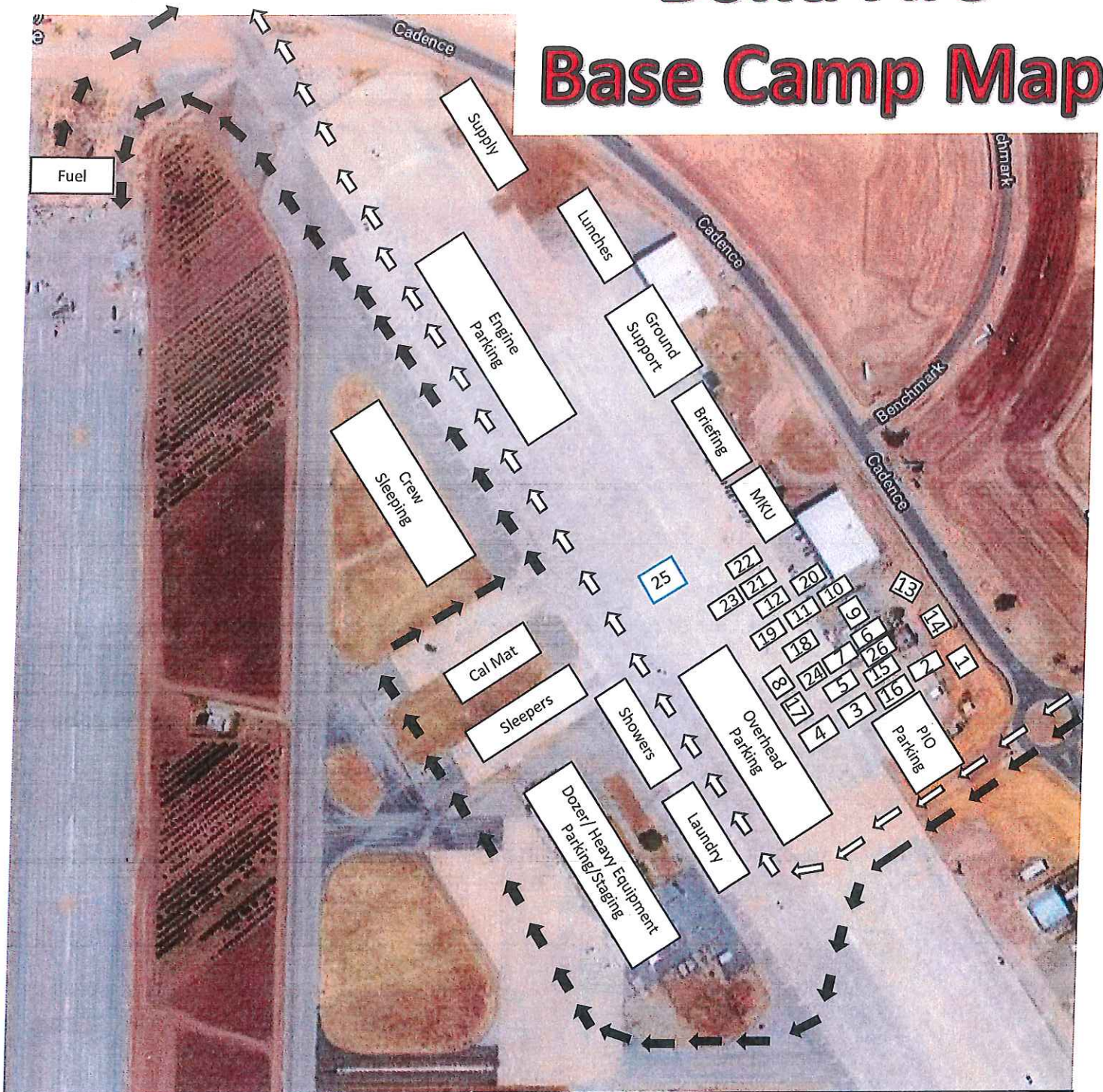
Operator Skill Level: VENDOR RATING MUST BE DONE

Operator's Cooperation Level: VENDOR RATING MUST BE DONE

Overall Performance: VENDOR RATING MUST BE DONE

* NOTE: any rating of POOR requires an explanation in Comment Section.
** Final evaluation or for more documentation, use a CALFIRE Form 230 or equivalent.

Bond Fire Base Camp Map



1 PIO	5 Ordering	9 Situation Unit	13 IC	17 Resources	21 FDUL
2 Safety	6 Training	10 Motels	14 OPS	18 InciNet	22 Facilities
3 Liaison	7 Clerical	11 Comp Claims/ Procurement	15 Meeting Area	19 Finance	23 Radio Cloning
4 Check-In/ Demob	8 Equipment Time	12 Comms	16 LE	20 OES	24 PTRC/ Cost
25 MEDL	26 Plans				

TO DROP POINT 42

- via El Toro Rd
- 28 min without traffic
- Orange County Great Park
- Irvine, CA 92618
- Follow Cadence and Chinon to Irvine Blvd
- 2 min (0.6 mi)
- Drive from El Toro Rd to Lake Forest
- 17 min (8.9 mi)
- Turn right
- 15 s (164 ft)
- 18 min (9.5 mi)
- **Orange County Fire Authority Station #42**
- **19150 Ridgeline Rd, Trabuco Canyon, CA 92679**

TO DROP POINT 15

- Head west toward Ridgeline Rd
- 164 ft
- Turn right onto Ridgeline Rd
- 0.6 mi
- Turn left onto E Santiago Canyon Rd
- Destination will be on the left
- 2.4 mi
- 5 min (3.0 mi)
- **E Santiago Canyon Rd**
- **Silverado, CA 92676**

TO DROP POINT 10

- Head north on E Santiago Canyon Rd toward Hangmans Tree Rd
- 2.7 mi
- Turn right toward Silverado Canyon Rd
- 430 ft
- Turn right onto Silverado Canyon Rd
- Destination will be on the right
- 0.8 mi
- 4 min (3.6 mi)
- **27172 Silverado Canyon Rd**
- **Silverado, CA 92676**

TO DROP POINT 55

- 26 min (14.3 miles)
- via Portola Pkwy
- Orange County Great Park
- Follow Cadence to Bosque
- 2 min (0.8 mi)
- Drive along Portola Pkwy, Jamboree Rd and E Santiago Canyon Rd
- 22 min (12.9 mi)
- Drive to your destination
- 3 min (0.6 mi)
- **Silverado**
- **California 92676**

UNIT LOG CONT. (ICS 214)

1. Incident Name:

Bond

2. Operational Period:

Date From: 12/8/20 Date To: 12/9/20

Time From: 0700 Time To: 0700

6. Activity Log

TIME

MAJOR EVENTS

7. Prepared By:

Date/Time:

