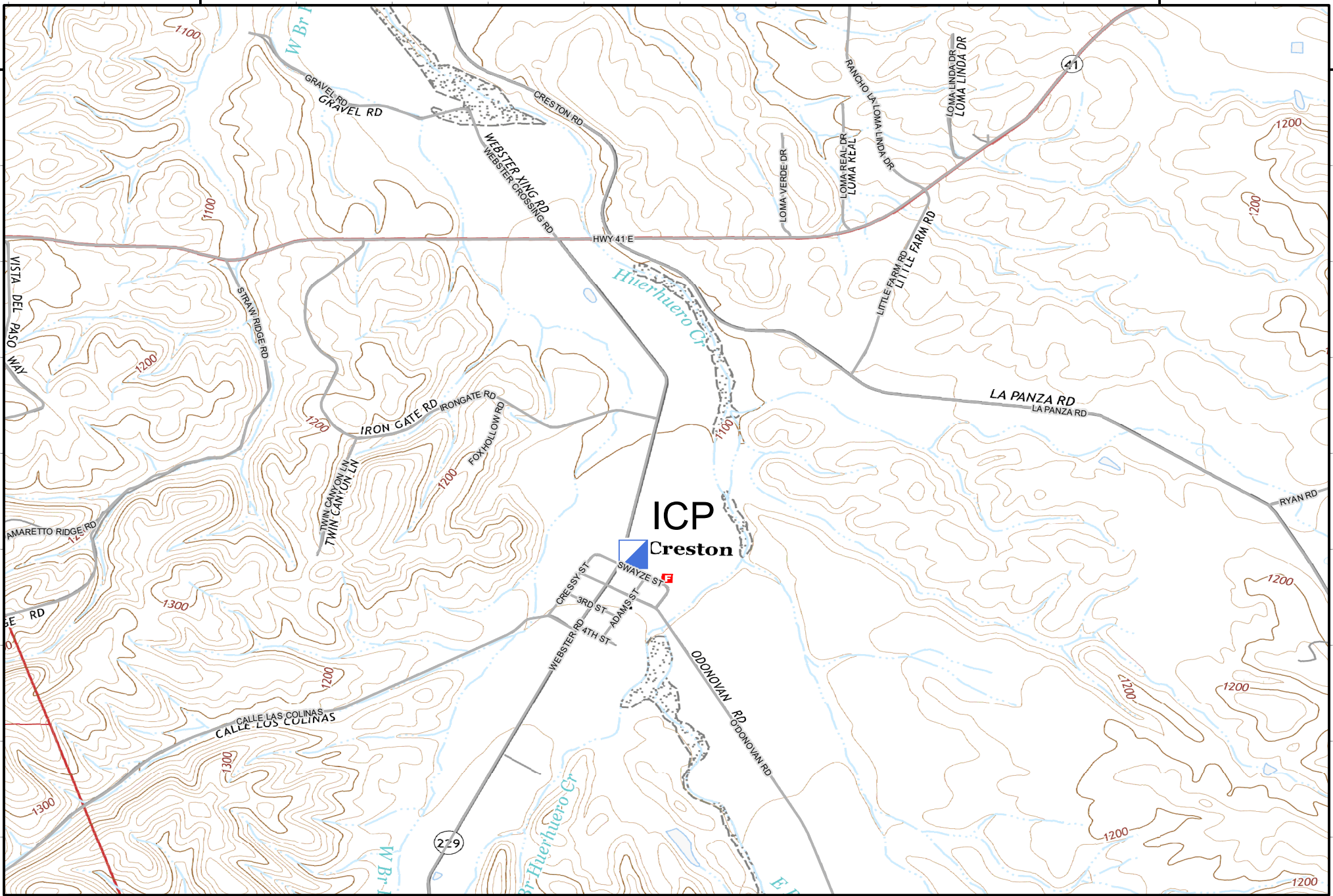


120°33'W

120°30'W

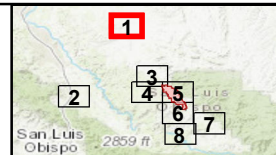
35°33'N

35°33'N



120°33'W

120°30'W

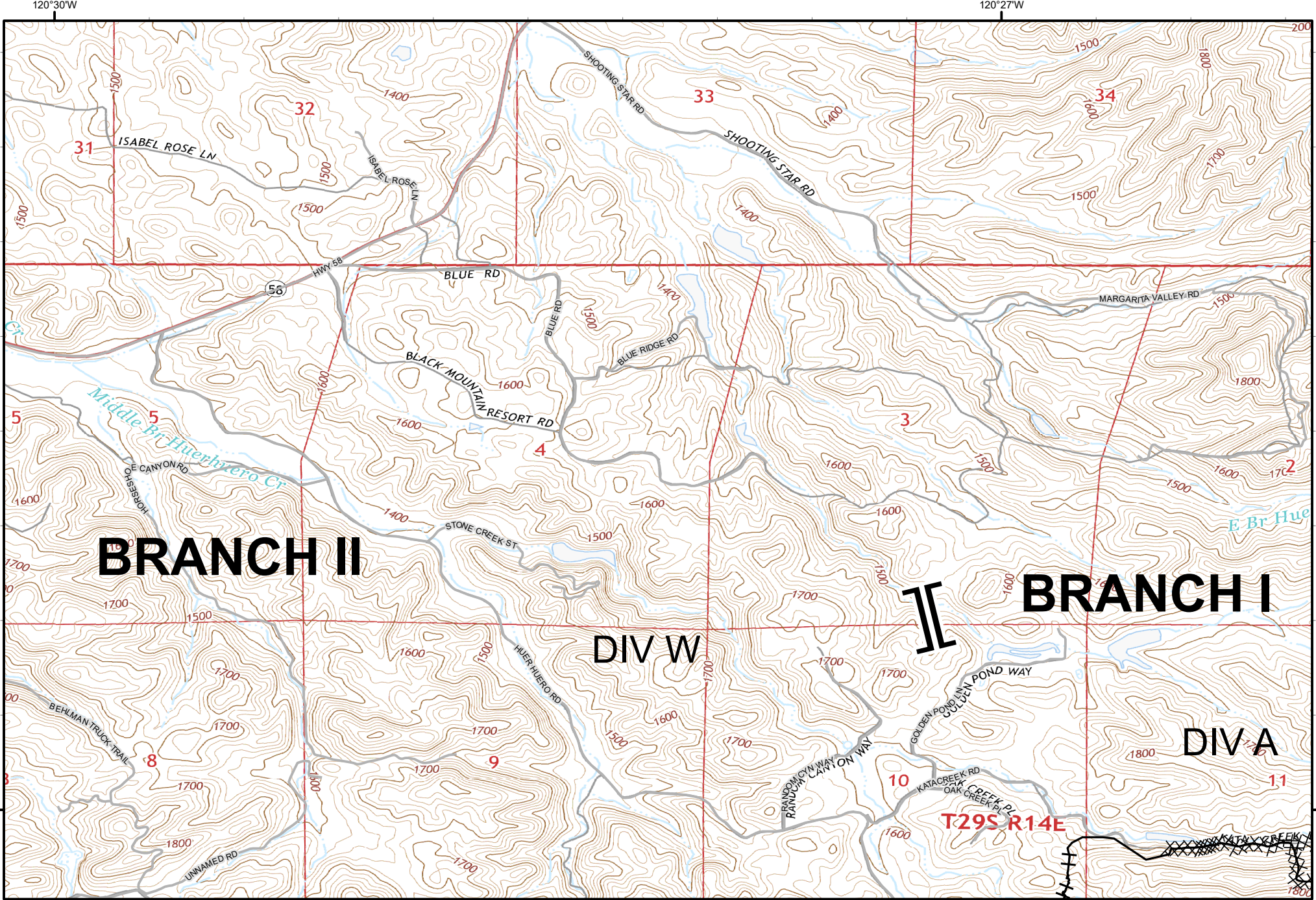


Page: 1 of 8

IAP
 POND INCIDENT
 CASLU009866
 August 4, 2020

- Incident Command Post
- Division Break
- Branch Break
- Helibase
- Drop Point
- Water Source
- Staging Area
- USFS Boundary
- Uncontrolled Fire Edge
- Contained Line
- Completed Dozer Line
- Completed Hand Line
- Aerial Hazard





BRANCH II

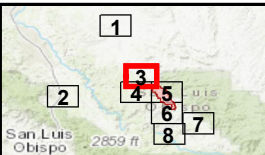
DIV W

II

BRANCH I

DIV A

T29S R14E

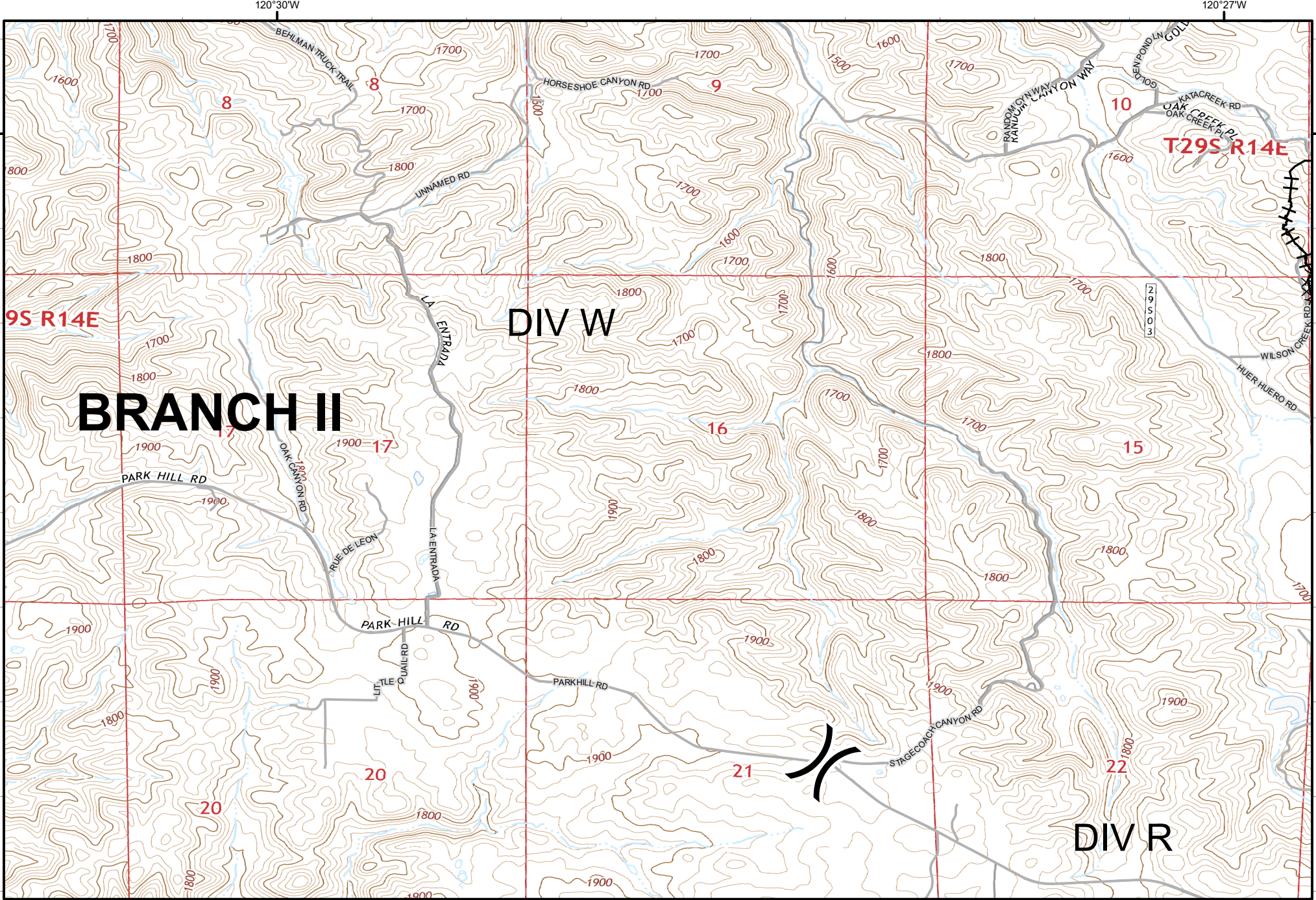
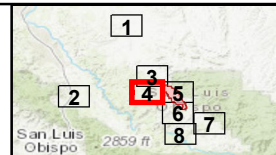


**Page:
3 of 8**

**IAP
POND INCIDENT
CASLU009866
August 4, 2020**

Incident Command Post	Drop Point	Uncontrolled Fire Edge
Division Break	Water Source	Contained Line
Branch Break	Staging Area	Completed Dozer Line
Helibase	USFS Boundary	Completed Hand Line
		Aerial Hazard



Page:
4 of 8

IAP
POND INCIDENT
CASLU009866
August 4, 2020

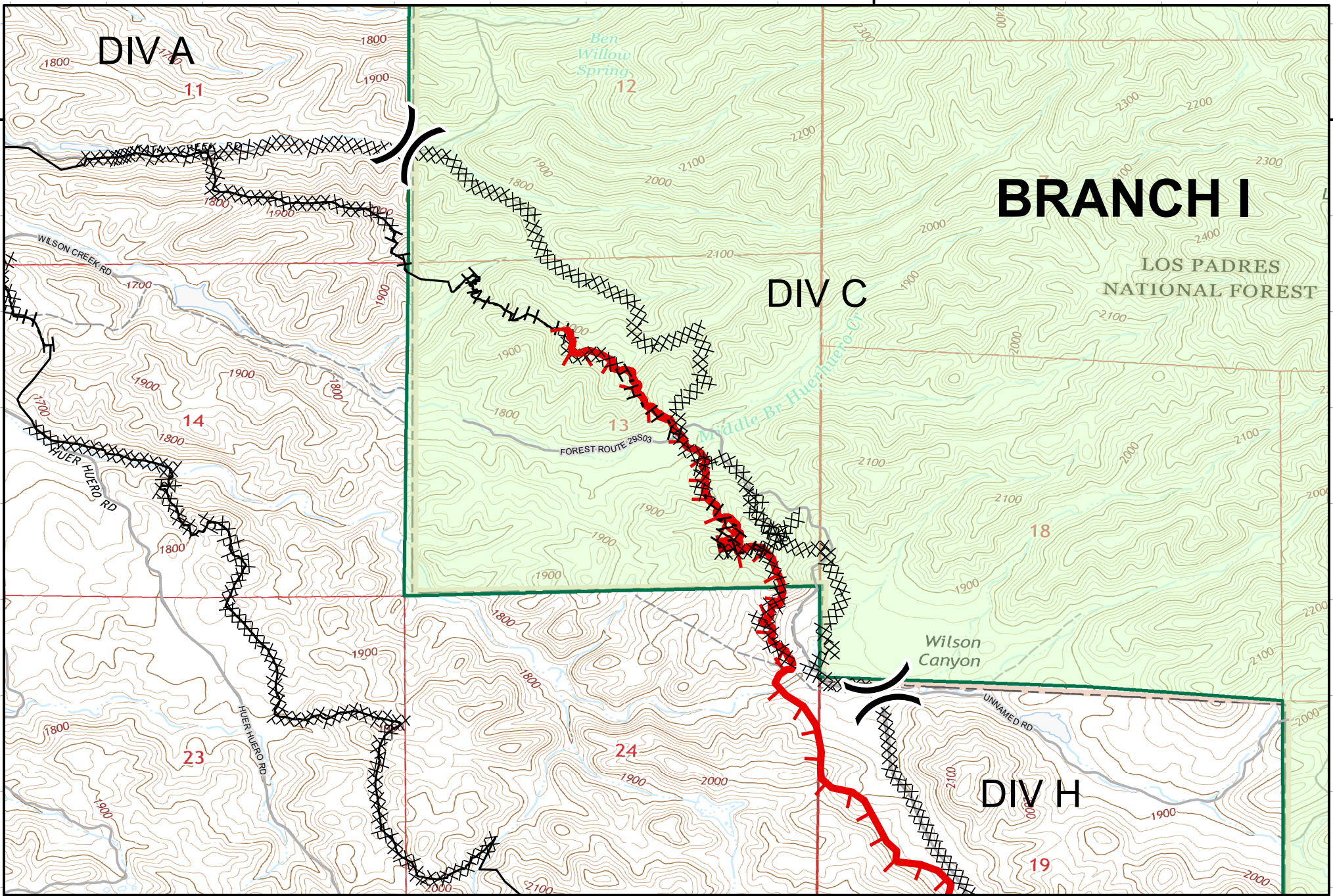
- | | | |
|-----------------------|---------------|------------------------|
| Incident Command Post | Drop Point | Uncontrolled Fire Edge |
| Division Break | Water Source | Contained Line |
| Branch Break | Staging Area | Completed Dozer Line |
| Helibase | USFS Boundary | Completed Hand Line |
| | | Aerial Hazard |



120°25'W

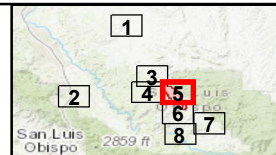
35°25'N

35°25'N



120°25'W


Logos for CAL FIRE, XSL (Type 2 Air Hazard), and UAS (United States Forest Service). A scale bar shows distances in miles (0, 0.175, 0.35, 0.7) and a north arrow is present.

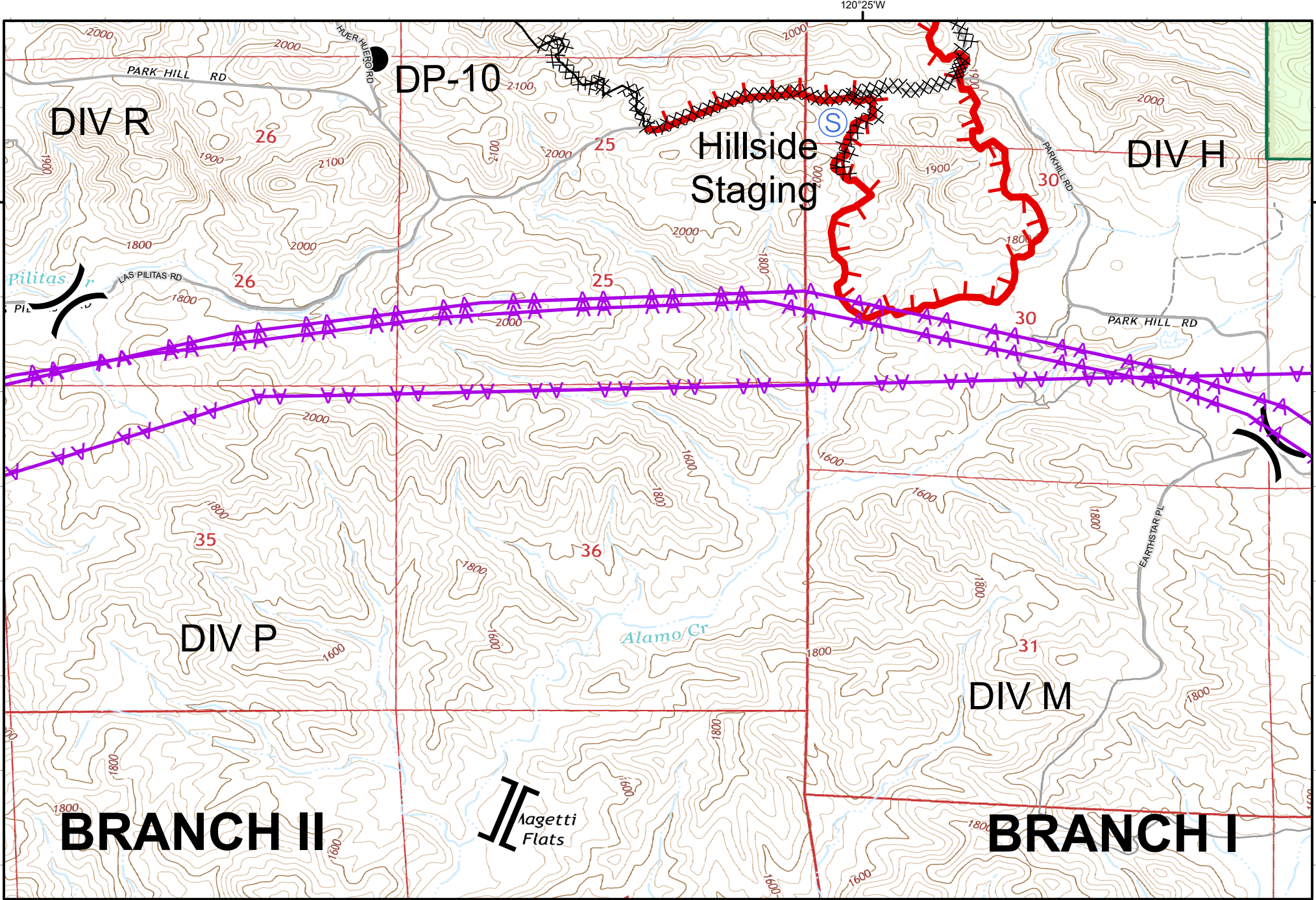


Page: 5 of 8

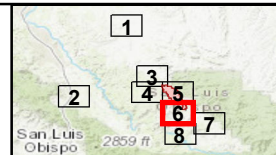
IAP
POND INCIDENT
CASLU009866
August 4, 2020

Incident Command Post	Drop Point	Uncontrolled Fire Edge
Division Break	Water Source	Contained Line
Branch Break	Staging Area	Completed Dozer Line
Helibase	USFS Boundary	Completed Hand Line
		Aerial Hazard





Scale: 1:24,000. Miles: 0, 0.175, 0.35, 0.7.



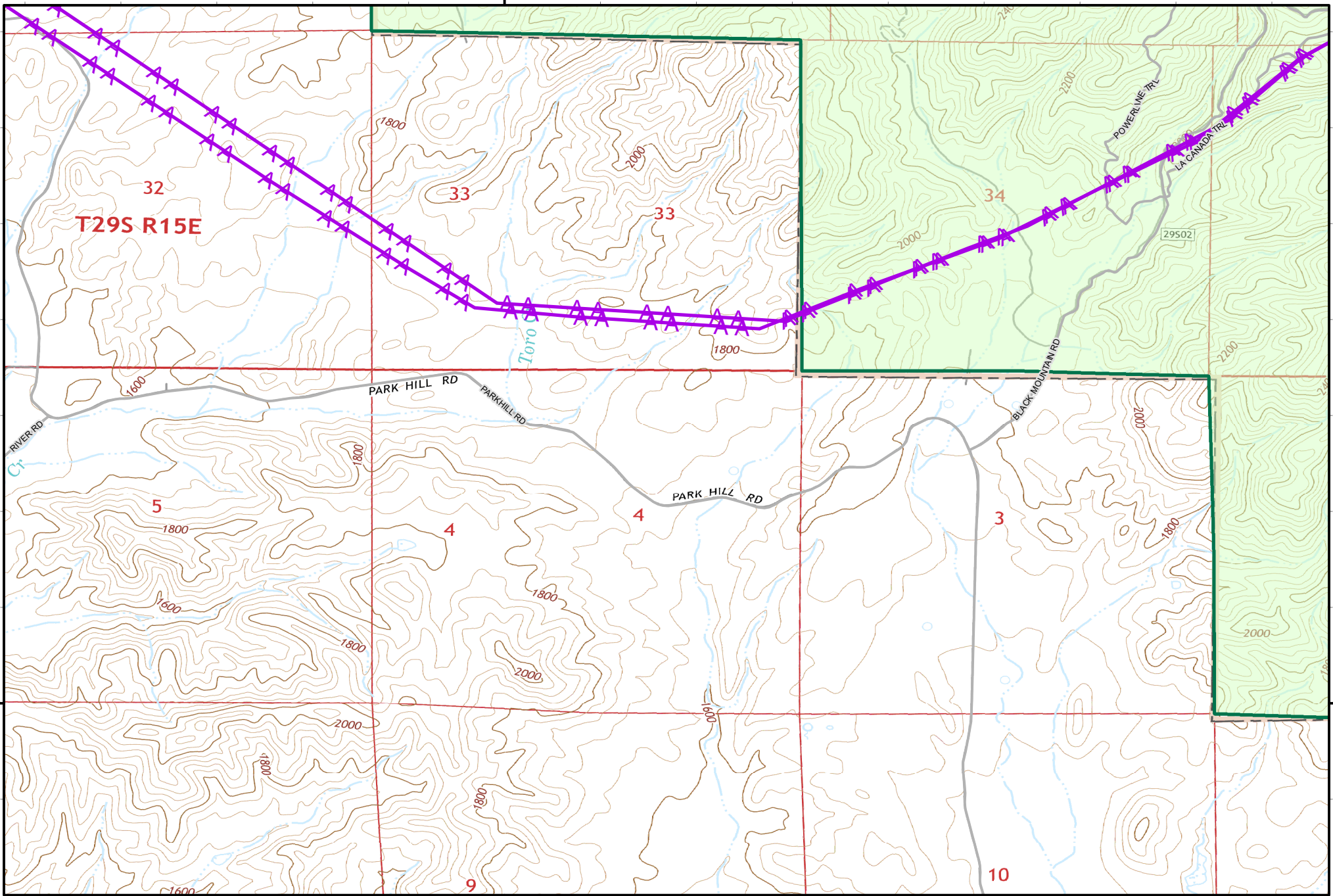
Page: 6 of 8

IAP
 POND INCIDENT
 CASLU009866
 August 4, 2020

- | | | |
|-----------------------|---------------|------------------------|
| Incident Command Post | Drop Point | Uncontrolled Fire Edge |
| Division Break | Water Source | Contained Line |
| Branch Break | Staging Area | Completed Dozer Line |
| Helibase | USFS Boundary | Completed Hand Line |
| | | Aerial Hazard |



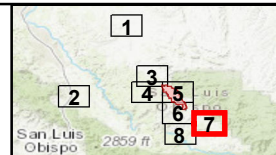
120°23'W



120°23'W

35°20'N

35°20'N



Page: 7 of 8

IAP
 POND INCIDENT
 CASLU009866
 August 4, 2020

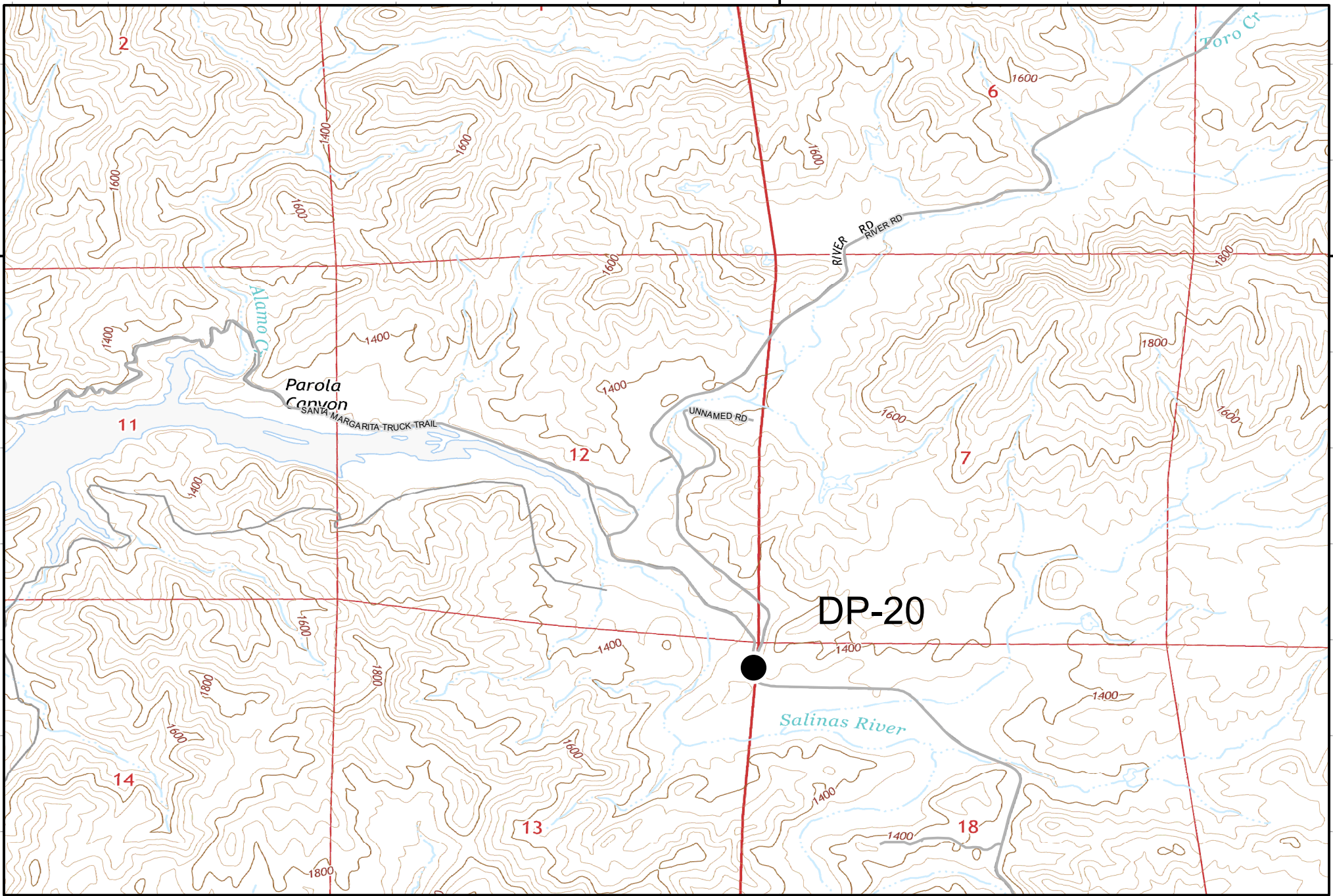
- Incident Command Post
- Division Break
- Branch Break
- Helibase
- Drop Point
- Water Source
- Staging Area
- USFS Boundary
- Uncontrolled Fire Edge
- Contained Line
- Completed Dozer Line
- Completed Hand Line
- Aerial Hazard



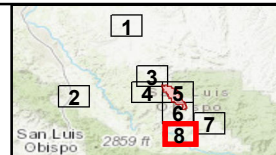
120°25'W

35°20'N

35°20'N



120°25'W



Page:
8 of 8

IAP
POND INCIDENT
CASLU009866
August 4, 2020

- | | | |
|-----------------------|---------------|------------------------|
| Incident Command Post | Drop Point | Uncontrolled Fire Edge |
| Division Break | Water Source | Contained Line |
| Branch Break | Staging Area | Completed Dozer Line |
| Helibase | USFS Boundary | Completed Hand Line |
| | | Aerial Hazard |

