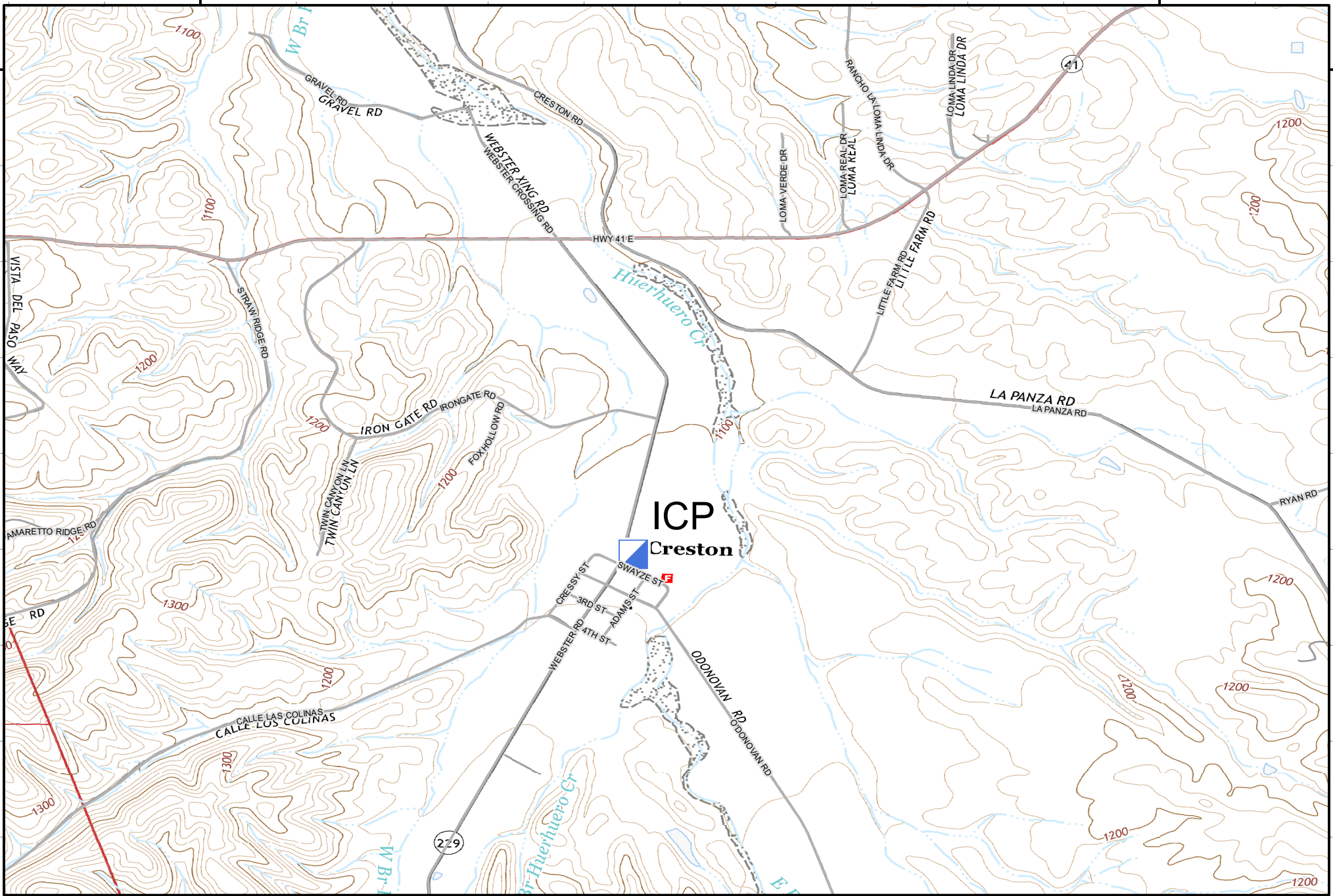


120°33'W

120°30'W

35°33'N

35°33'N



120°33'W

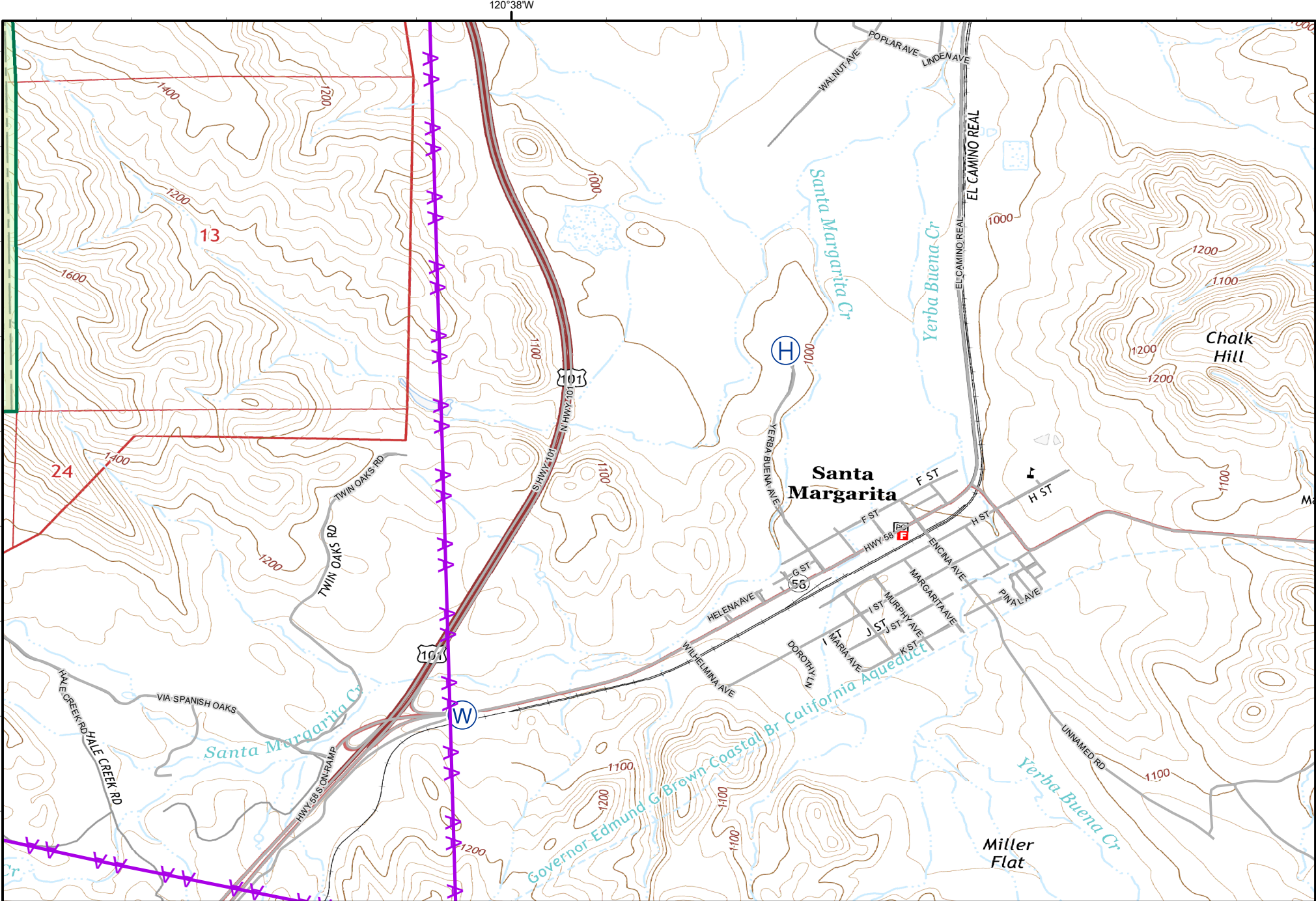
120°30'W

**Page:**  
1 of 7

**IAP**  
**POND INCIDENT**  
**CASLU009866**  
**August 5, 2020**

- Drop Point
- W Water Source
- S Staging Area
- USFS Boundary

- Incident Command Post
- Division Break
- Branch Break
- Helibase
- Uncontrolled Fire Edge
- Contained Line
- Completed Dozer Line
- Completed Hand Line
- Aerial Hazard
- R - R Road as Completed Line
- Access or Improved Road



120°38'W

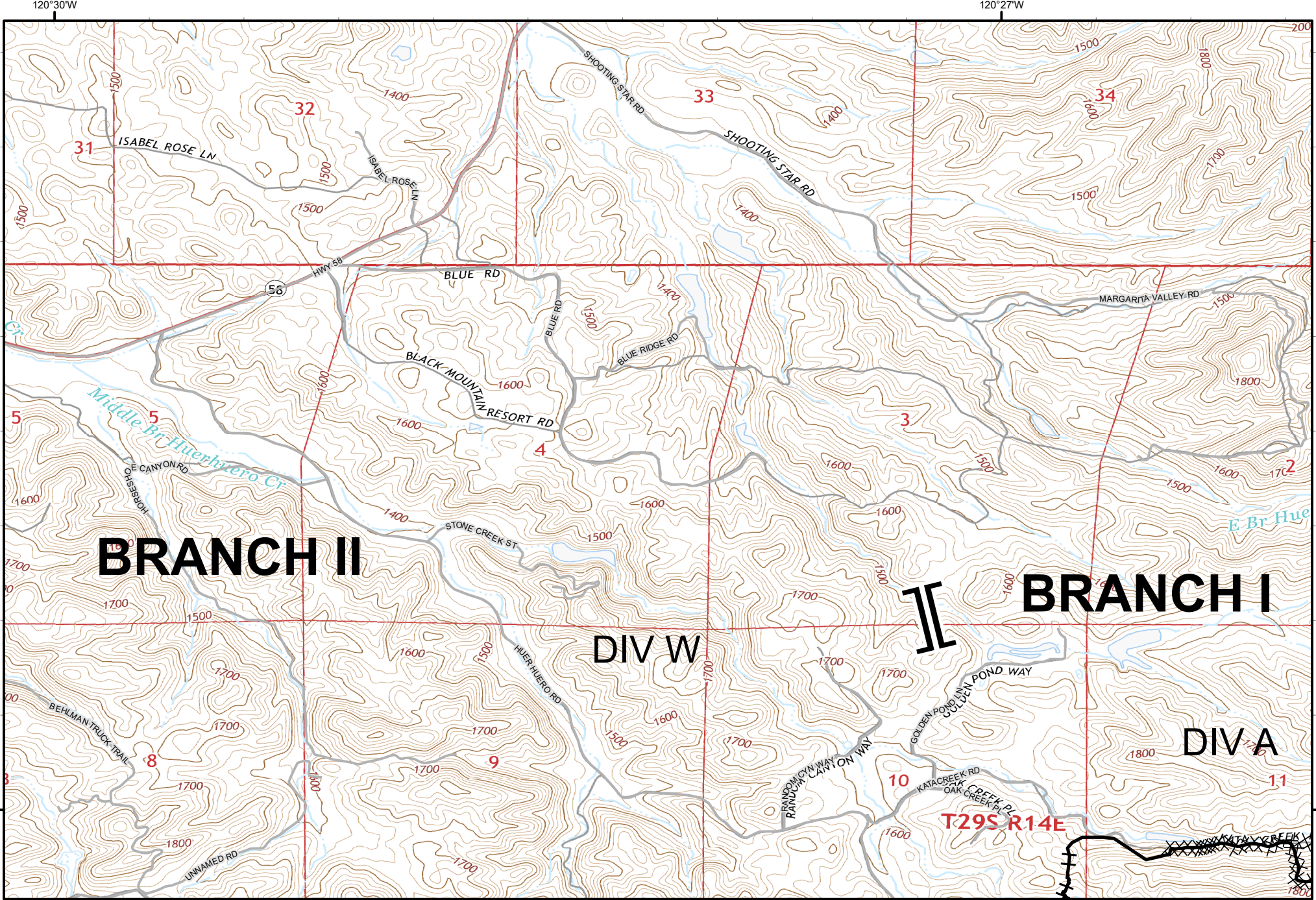
**Page:**  
2 of 7

**IAP**  
**POND INCIDENT**  
**CASLU009866**  
**August 5, 2020**

- Drop Point
- W Water Source
- S Staging Area
- USFS Boundary

- Incident Command Post
- Division Break
- Branch Break
- Helibase
- Uncontrolled Fire Edge
- Contained Line
- Completed Dozer Line
- Completed Hand Line
- Aerial Hazard
- R - R Road as Completed Line
- Access or Improved Road





**BRANCH II**

**DIV W**

**II**

**BRANCH I**

**DIV A**

**T29S R14E**

120°30'W

1:24,000

Miles

Page: 3 of 7

San Luis Obispo 2859 ft

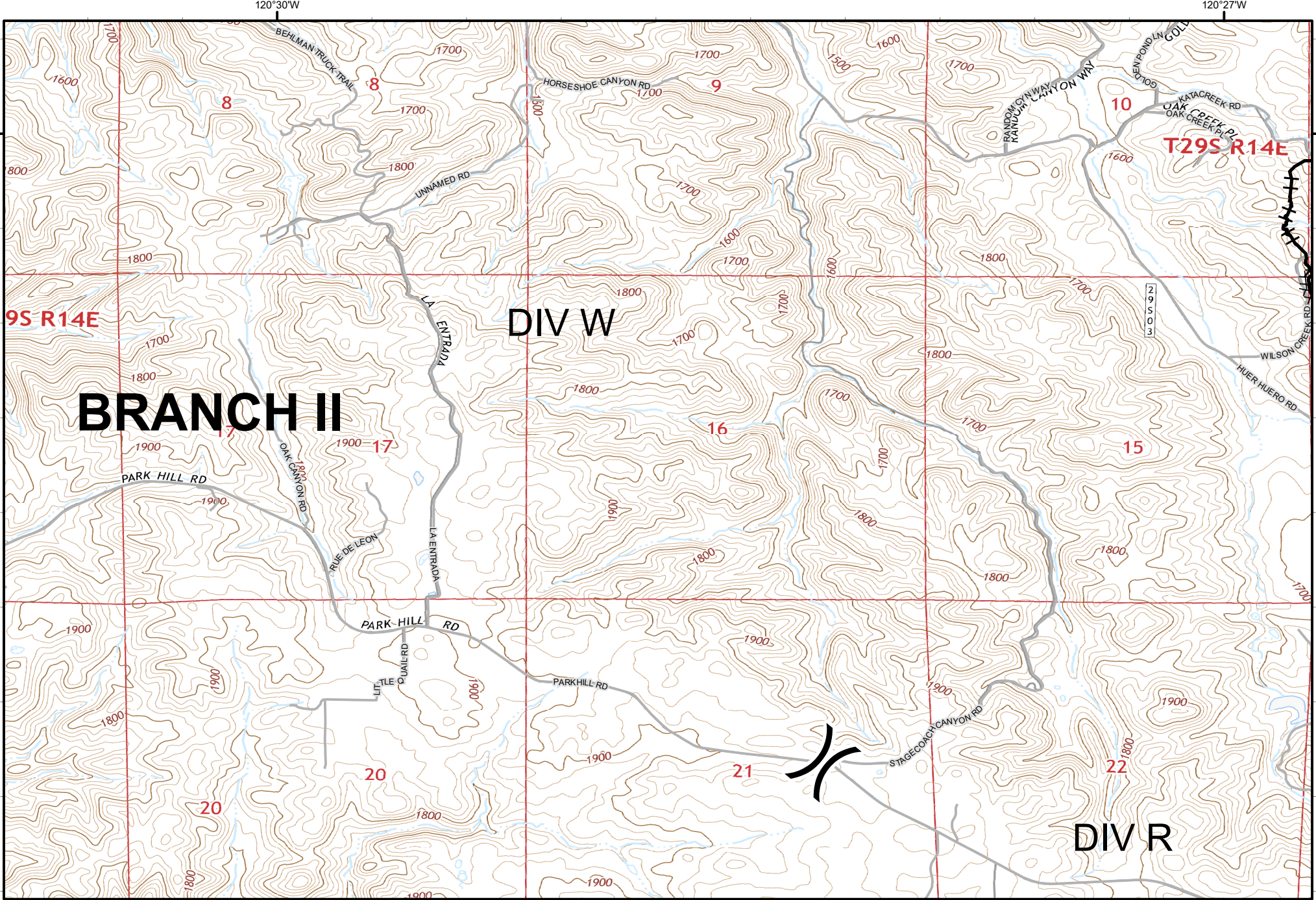
- Drop Point
- W Water Source
- S Staging Area
- USFS Boundary

**IAP**  
**POND INCIDENT**  
**CASLU009866**  
**August 5, 2020**

- Incident Command Post
- Division Break
- Branch Break
- Helibase
- Uncontrolled Fire Edge
- Contained Line
- Completed Dozer Line
- Completed Hand Line
- Aerial Hazard
- R - R Road as Completed Line
- Access or Improved Road








Page: 4 of 7

**IAP**  
**POND INCIDENT**  
**CASLU009866**  
**August 5, 2020**

● Drop Point	■ Incident Command Post	■ Uncontrolled Fire Edge	R - R Road as Completed Line
⊙ Water Source	⎓ Division Break	▬ Contained Line	▬ Access or Improved Road
⊙ Staging Area	⎓ Branch Break	⊗ Completed Dozer Line	
■ USFS Boundary	⊙ Helibase	H - Completed Hand Line	
		AA Aerial Hazard	

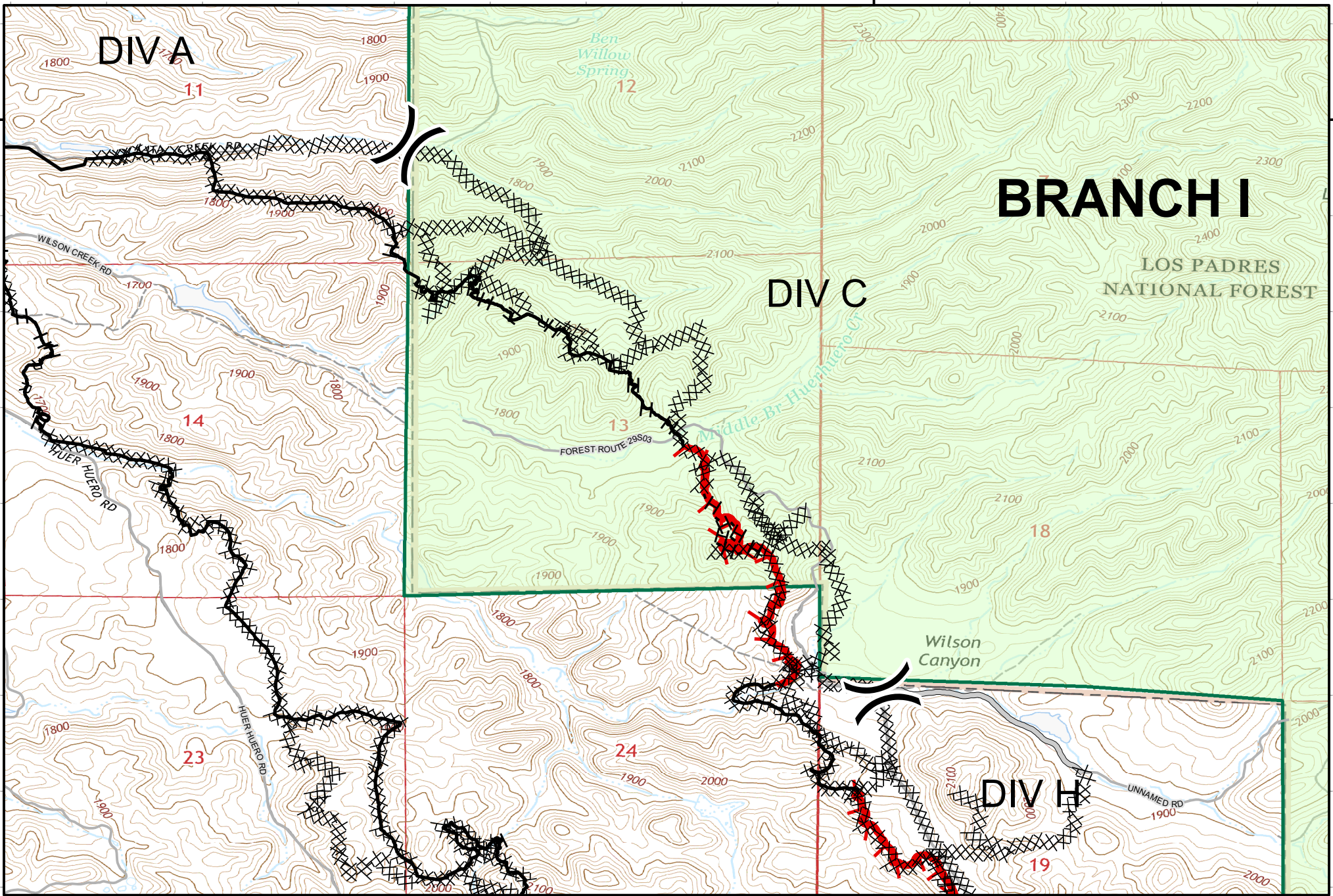




120°25'W

35°25'N

35°25'N



120°25'W

Logos for CAL FIRE, XSL (California State Lands), and UAS (United States Forest Service). A scale bar shows distances in miles (0, 0.175, 0.35, 0.7). A north arrow is also present.

Page: 5 of 7

San Luis Obispo 2859 ft

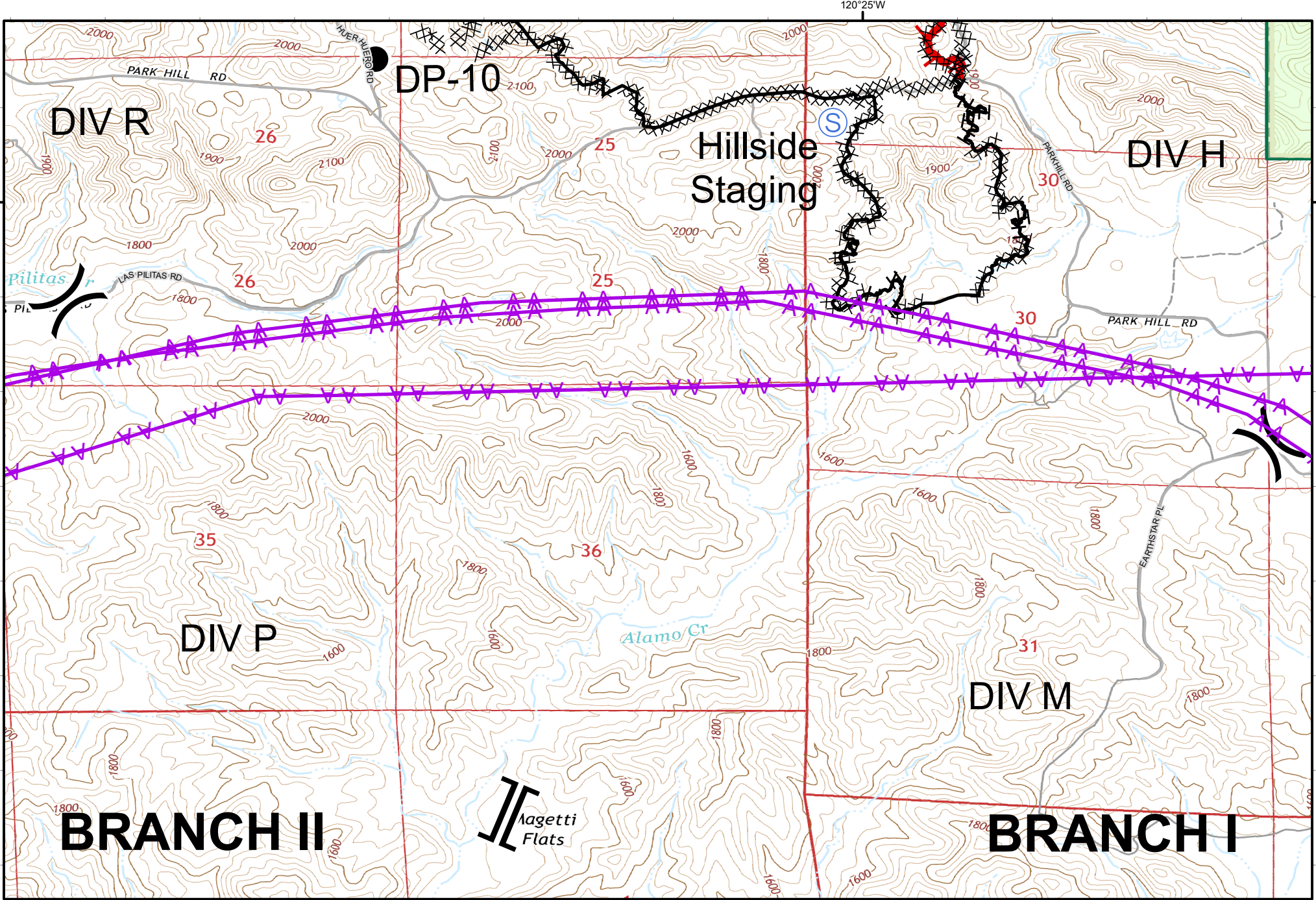
**IAP**  
**POND INCIDENT**  
**CASLU009866**  
**August 5, 2020**

- Drop Point
- W Water Source
- S Staging Area
- USFS Boundary

- Incident Command Post
- Division Break
- Branch Break
- Helibase
- Uncontrolled Fire Edge
- Contained Line
- Completed Dozer Line
- Completed Hand Line
- Aerial Hazard
- R - R Road as Completed Line
- Access or Improved Road







Scale: 1:24,000  
 0 0.175 0.35 0.7 Miles

Page: 6 of 7  
 San Luis Obispo 2859 ft

**IAP**  
**POND INCIDENT**  
**CASLU009866**  
**August 5, 2020**

- Drop Point
- W Water Source
- S Staging Area
- USFS Boundary

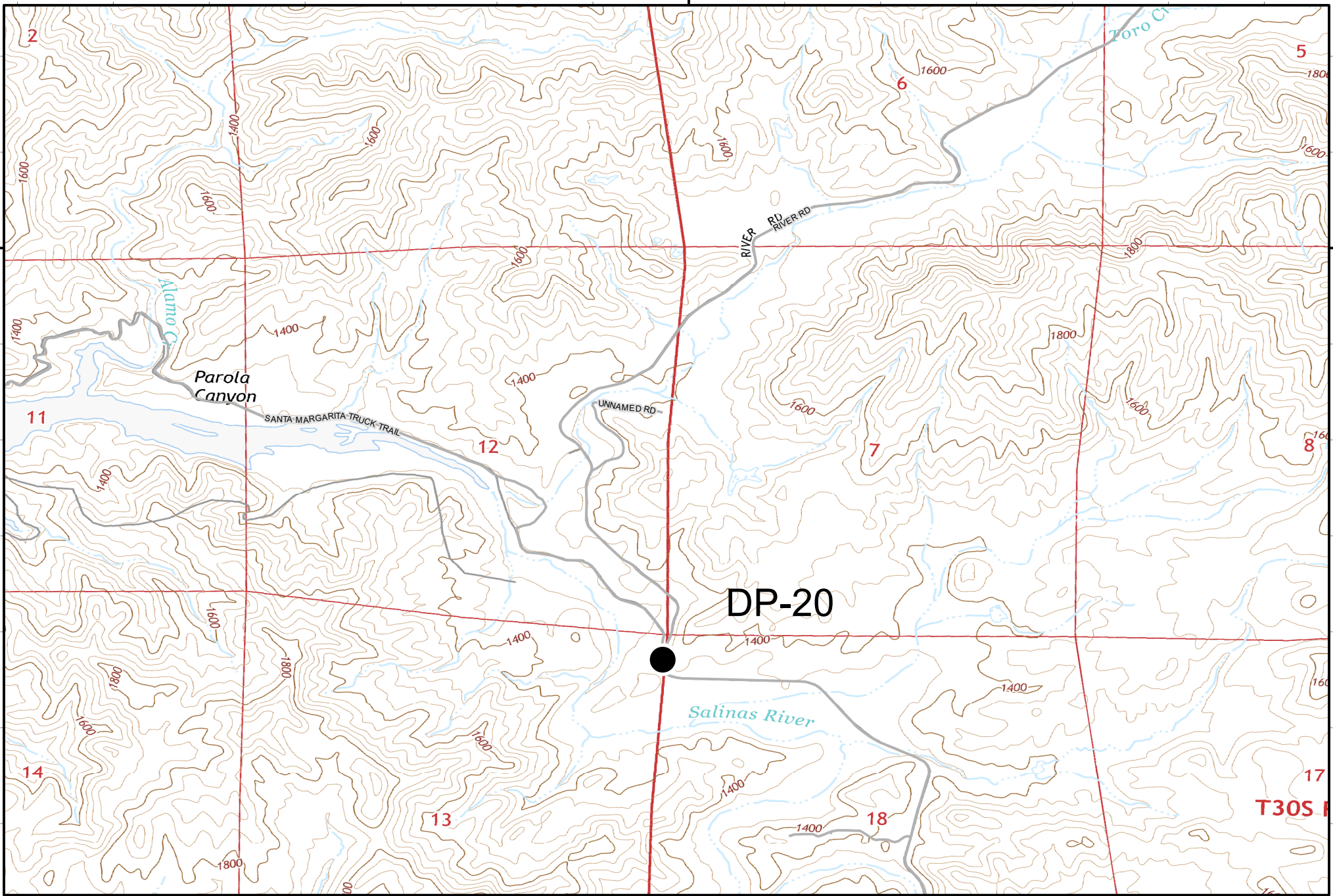
- Incident Command Post
- Division Break
- Branch Break
- Helibase
- Uncontrolled Fire Edge
- Contained Line
- Completed Dozer Line
- Completed Hand Line
- Aerial Hazard
- R - R Road as Completed Line
- Access or Improved Road



120°25'W

35°20'N

35°20'N



120°25'W

Page: 7 of 7

**IAP**  
**POND INCIDENT**  
**CASLU009866**  
**August 5, 2020**

- Drop Point
- W Water Source
- S Staging Area
- USFS Boundary

- Incident Command Post
- Division Break
- Branch Break
- Helibase
- Uncontrolled Fire Edge
- Contained Line
- Completed Dozer Line
- Completed Hand Line
- Aerial Hazard
- R - R Road as Completed Line
- Access or Improved Road

