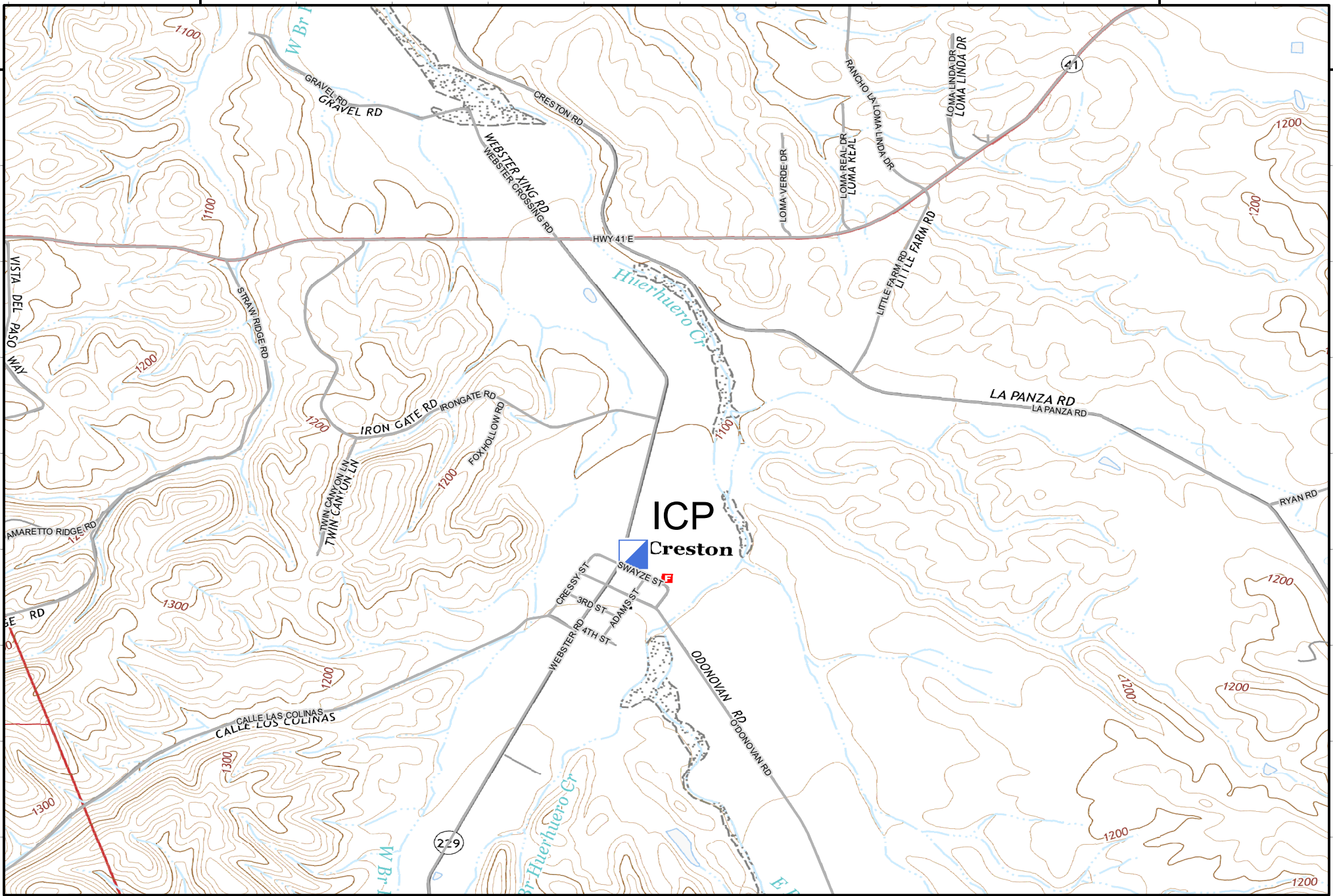


120°33'W

120°30'W

35°33'N

35°33'N



120°33'W

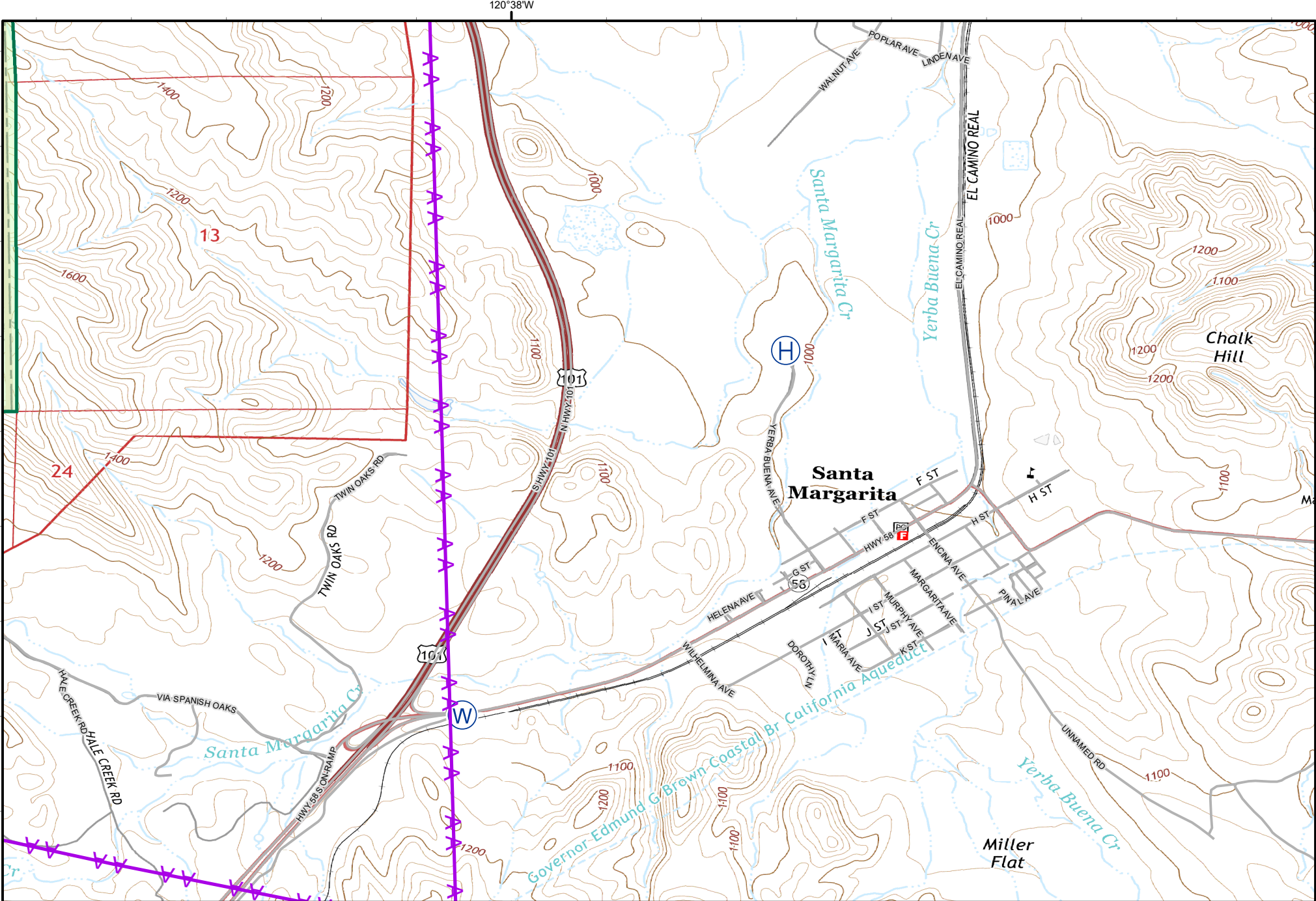
120°30'W

Page:
1 of 7

IAP
POND INCIDENT
CASLU009866
August 6, 2020

- Drop Point
- W Water Source
- S Staging Area
- USFS Boundary

- Incident Command Post
- Division Break
- Branch Break
- Helibase
- Uncontrolled Fire Edge
- Contained Line
- Completed Dozer Line
- Completed Hand Line
- Aerial Hazard
- R - R Road as Completed Line
- Access or Improved Road



1:24,000

0 0.175 0.35 0.7 Miles

Page: 2 of 7

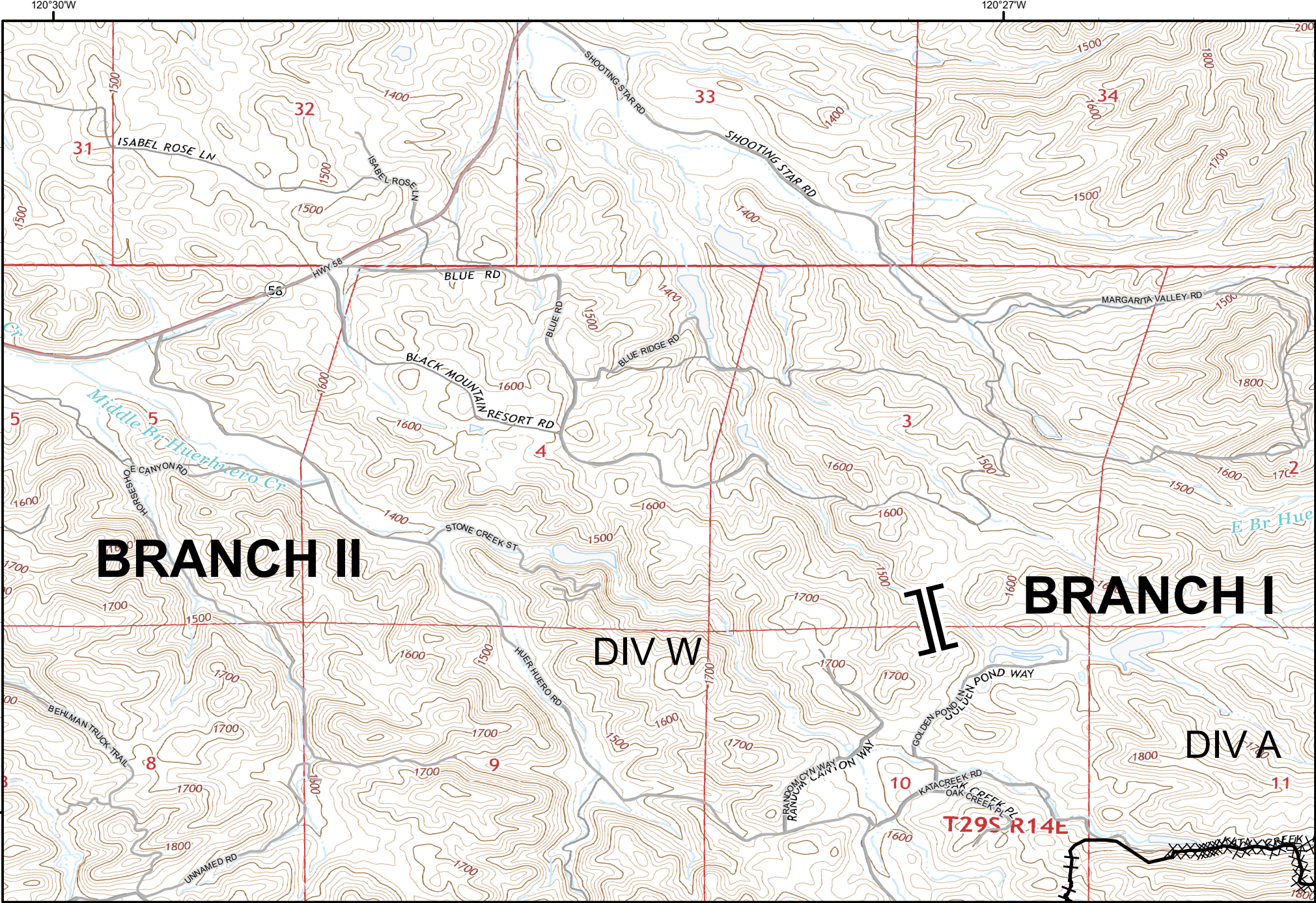
San Luis Obispo 2859 ft

120°38'W

IAP
POND INCIDENT
CASLU009866
August 6, 2020

- Drop Point
- W Water Source
- S Staging Area
- USFS Boundary

- Incident Command Post
- Division Break
- Branch Break
- Helibase
- Uncontrolled Fire Edge
- Contained Line
- Completed Dozer Line
- Completed Hand Line
- Aerial Hazard
- R - R Road as Completed Line
- Access or Improved Road



120°30'W

1:24,000

Miles

0 0.175 0.35 0.7

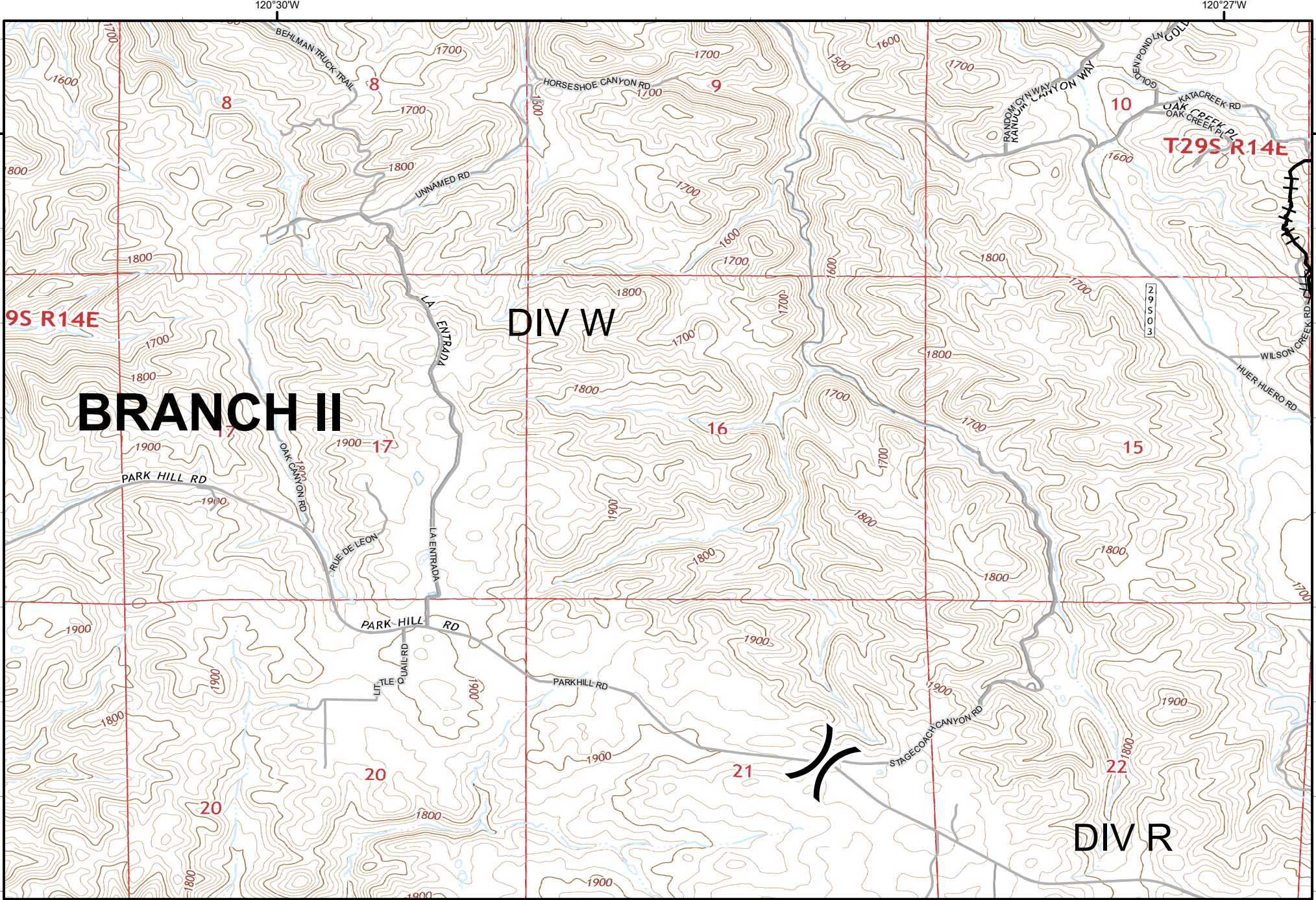
Page: 3 of 7

San Luis Obispo 2859 ft

- Drop Point
- W Water Source
- S Staging Area
- USFS Boundary

IAP
POND INCIDENT
 CASLU009866
 August 6, 2020

- Incident Command Post
 - Division Break
 - Branch Break
 - Helibase
 - Uncontrolled Fire Edge
 - Contained Line
 - Completed Dozer Line
 - Completed Hand Line
 - Aerial Hazard
 - R - R Road as Completed Line
 - Access or Improved Road
-



Page: 4 of 7

IAP
POND INCIDENT
CASLU009866
August 6, 2020

- Drop Point
- W Water Source
- S Staging Area
- USFS Boundary

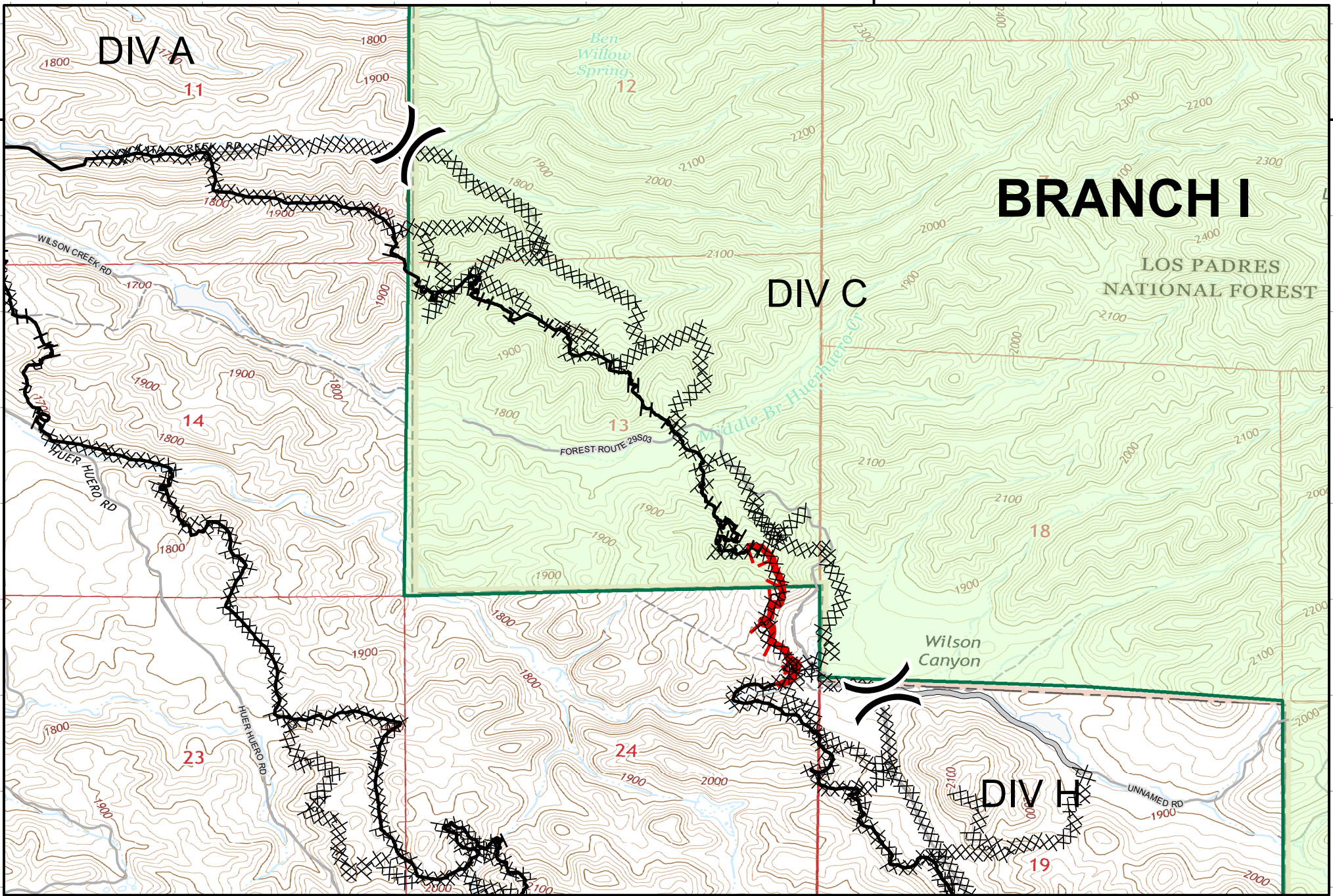
- Incident Command Post
- Division Break
- Branch Break
- Helibase
- Uncontrolled Fire Edge
- Contained Line
- Completed Dozer Line
- Completed Hand Line
- Aerial Hazard
- R - R Road as Completed Line
- Access or Improved Road



120°25'W

35°25'N

35°25'N



120°25'W

Logos for CAL FIRE, XSL (California State Lands), and UAS (United States Forest Service). A scale bar shows distances up to 0.7 miles. A north arrow is also present.

Page: 5 of 7

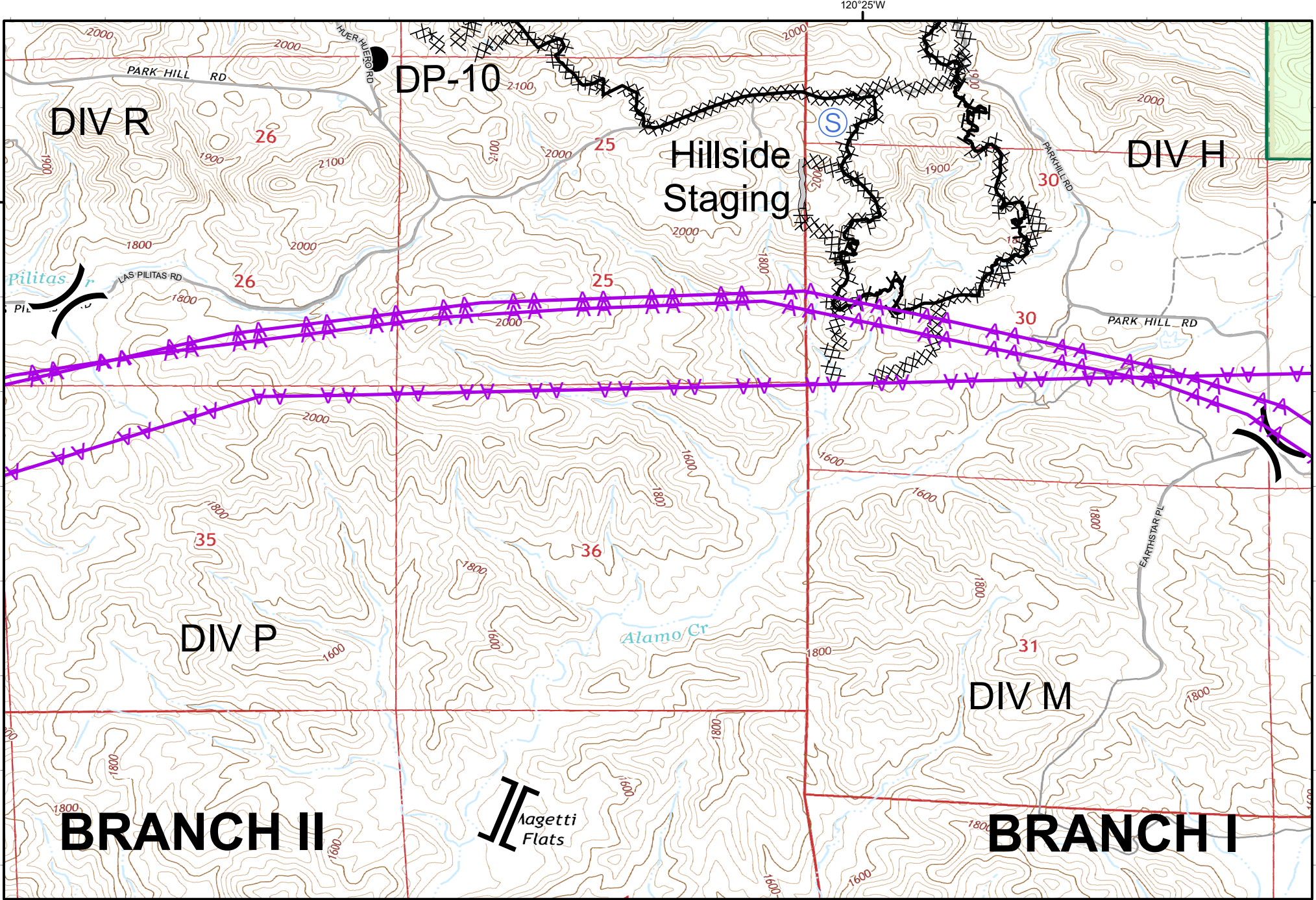
An inset map shows the location of the incident area within a larger regional context, with a red box highlighting the specific area shown in the main map.

IAP
POND INCIDENT
CASLU009866
August 6, 2020

- Drop Point
- W Water Source
- S Staging Area
- USFS Boundary

- Incident Command Post
- Division Break
- Branch Break
- Helibase
- Uncontrolled Fire Edge
- Contained Line
- Completed Dozer Line
- Completed Hand Line
- Aerial Hazard
- R - R Road as Completed Line
- Access or Improved Road





1:24,000

Miles

0 0.175 0.35 0.7

Page: 6 of 7

San Luis Obispo 2859 ft

IAP
POND INCIDENT
CASLU009866
August 6, 2020

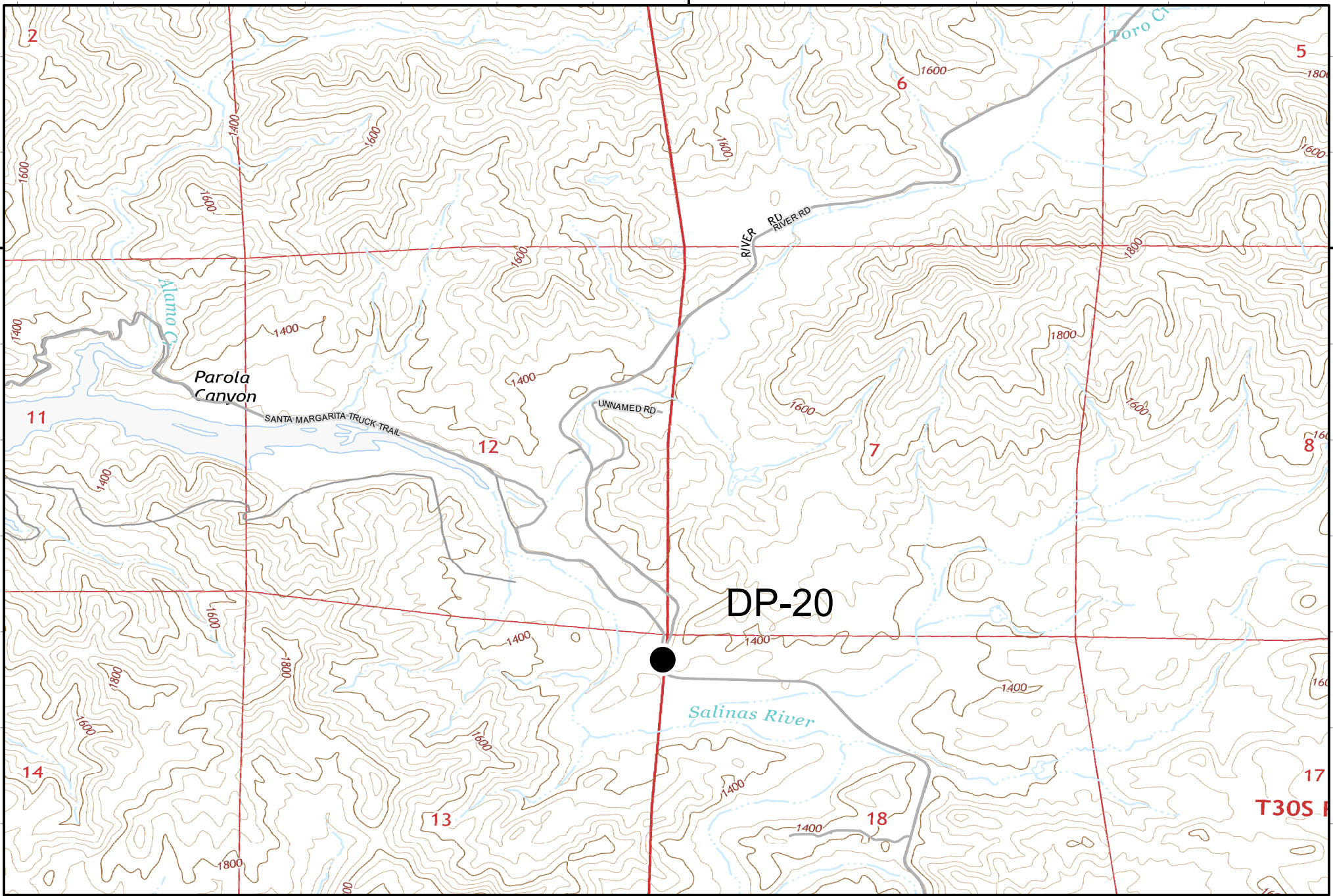
- Drop Point
- W Water Source
- S Staging Area
- USFS Boundary

- Incident Command Post
- Division Break
- Branch Break
- Helibase
- Uncontrolled Fire Edge
- Contained Line
- Completed Dozer Line
- Completed Hand Line
- Aerial Hazard
- R - R Road as Completed Line
- Access or Improved Road

120°25'W

35°20'N

35°20'N



120°25'W

Page: 7 of 7

IAP
POND INCIDENT
CASLU009866
August 6, 2020

- Drop Point
- W Water Source
- S Staging Area
- USFS Boundary

- Incident Command Post
- Division Break
- Branch Break
- Helibase
- Uncontrolled Fire Edge
- Contained Line
- Completed Dozer Line
- Completed Hand Line
- Aerial Hazard
- R - R Road as Completed Line
- Access or Improved Road

