

INCIDENT ACTION PLAN

WEST CASTLE ZONE SQF COMPLEX

CA-SQF-002541

Wednesday



OPERATIONAL PERIOD

9/23/2020 0700
to
9/24/2020 0700



INCIDENT OBJECTIVES (ICS 202)

1. Incident Name: WEST CASTLE ZONE SQF COMPLEX	2. Operational Period:	Date From: 9/23/2020	Date To: 9/24/2020
		Time From: 0700	Time To: 0700

3. Objective(s):

- Management Objectives**
- Provide for emergency personnel and public safety at all times.
 - Ensure COVID-19 precautions and best practices are met at all times.
 - Protect property, improvements, and infrastructure.
 - Ensure repopulation takes place in a quick, efficient, and effective manner.
 - Ensure coordinated, timely and accurate release of public information.
 - Foster and maintain relationships with all cooperators and stakeholders.
 - Protect economic, natural, cultural and heritage resources.
 - Maintain fiscal accountability and keep costs commensurate with values at risk.

- Control Objectives**
- Keep the fire South of Hwy 198 - Sierra Dr / Milk Ranch Peak / Paradise Peak / Empire Mtn.
 - Keep the fire East of Springville / Yokhol Valley / Blue Ridge.
 - Keep the fire North of the Pier Fire dozer contingency line.

General Situational Awareness:

In the COVID-19 environment, high density populations or large groups are particularly at risk. To help protect yourself, your family and to ensure all employees return home safely, make sure to practice social distancing.

Enhanced hygiene (especially handwashing), PPE & monitoring practices help limit the infection rate of first responders.

5. Site Safety Plan Required? Yes No


Approved Site Safety Plan(s) Located at:

- 6. Incident Action Plan**
- | | | | |
|---|--|--|---|
| <input checked="" type="checkbox"/> ICS 203 | <input checked="" type="checkbox"/> ICS 220 | <input checked="" type="checkbox"/> Finance Message | <input checked="" type="checkbox"/> ICS 214 |
| <input checked="" type="checkbox"/> ICS 204 | <input checked="" type="checkbox"/> PIO Message | <input checked="" type="checkbox"/> Shift Ticket Example | <input checked="" type="checkbox"/> CAL FIRE 101 |
| <input checked="" type="checkbox"/> ICS 205 | <input checked="" type="checkbox"/> Weather Forecast | <input checked="" type="checkbox"/> Ground Support Map | <input checked="" type="checkbox"/> COVID Daily Check |
| <input checked="" type="checkbox"/> ICS 206 | <input checked="" type="checkbox"/> Fire Behavior | <input checked="" type="checkbox"/> Base Camp Map | <input checked="" type="checkbox"/> Water Usage Log |
| <input checked="" type="checkbox"/> ICS 208 | <input checked="" type="checkbox"/> Training Message | <input checked="" type="checkbox"/> Travel Map | <input type="checkbox"/> |

7. Prepared By: Shane Sherwood Position/Title: PSC1 Signature:

8. Approved by Incident Commander: Jeff Veik Signature:

ORGANIZATION ASSIGNMENT LIST (ICS 203)

1. Incident Name: WEST CASTLE ZONE SQF COMPLEX		2. Operational Period: Date From: 9/23/2020 Time From: 0700		Date To: 9/24/2020 Time To: 0700	
3. Incident Commander(s) and Command Staff:			7. Operation Section:		
IC/UC's	J.Veik / D. Martin (T)		Operations	S. Corn	
Deputy	M. Blankenheim / M. Marcucci (T)		Deputy Operations	S. Lane (T)	
Safety Officer	J. Buchmeier / J. Novak (T)		Night Ops	T. Ernst	
Information Officer	R. Brocchini / R. Lubben (T)		Staging Area		
Liaison Officer	J. Kiszka / M. Villalpando / R. Roberts (T)		Branch	XXI	M. Martinez (12)
4. Agency/Organization Representatives:			Division/Group	DD	J. Cazier (T) (12)
Agency/Organization	Name		Division/Group	MM	A. Estabrook (T) (12)
BLM	Gabe Garcia		Division/Group		
NPS	Tom Garcia / John Zeigler		Division/Group		
CHP Porterville	Scott Goddard		Division/Group		
Tulare Co. Sheriff's Office	Mike Boudreaux		Branch	XXV	D. Esades (12)
Tulare Co. Fire Dept.	Jeff Smith		Division/Group	TT	C. Usher (T) (12)
Tulare Co. EOC	Andrew Lockman		Division/Group	PP	R. Sonsteng (12) / M. Drum (T) (12) / T. Atteberry (12)
Tulare Co. Roads	Tony Boland / Amer Razaq		Division/Group		
CALTRANS	Joe Burkey / Danny Estep		Division/Group		
Tule River Reservation	Neil Peyron		Division/Group		
SQF	Angela Sanchez-Hand		Branch	XXIX	
CALOES	Javier Lara		Division/Group	WW	B. Willson (12)
PG&E	Pam Perdue		Division/Group	YY	J. Suarez (12)
SCE	Troy Whitman / Dan Keverline		Division/Group		
SQF AA	Connie Cummins		Division/Group		
SQF AA Rep.	Al Watson		Division/Group		
BIA	Nathan Gogna / Matthew Flying		Branch		
CDCR	Manny Nunez / Dave Parker (T)		Division/Group		
5. Planning Section:			Division/Group		
Chief	S.Sherwood (T)		Division/Group		
Deputy	G.Garcia		Division/Group		
Resource Unit	J. Anderson / J. Heald / J. Worden (T) / C. Uboldi (T)		Staging Area	ICP	
Situation Unit	N. Wallingford / I. Crossley (T)		Branch		
Documentation Unit			Division/Group		
Demobilization Unit	T. Shevenell		Division/Group		
GISS	C. Poli		Division/Group		
FBAN	H. Scanlon		Division/Group		
IMET	A. Gorelow		Division/Group		
Training Tech Spec	S. Vargas		Air Operations Branch		Director: B. Kremensky
			Air Support Group Supervisor		C. Inwood
			Air Tactical Group Supervisor		
6. Logistics Section			Helibase Manager		M. Reimer (T)
Chief	S. Dohman (T)				
Deputy Chief	J. Warden (T) / B. Brewer (T)		8. Finance/Administration Section:		
Supply Unit	P. Lee / D. Zumkeller (T)		Chief	G. Belk	
Facilities Unit	B. Luiz / J. Finley / R. McCracken (T)		Deputy Chief	R. Browne	
Ground Support Unit	J. Luckenbach / J. Christofferson (T)		Time Unit	J. Navarro	
Communications Unit	J. Brooks / C. Johns (T)		Procurement Unit	J. Andrade	
Medical Unit	M. Hnat / J. Davis (T)		Comp/Claims Unit	B. Stirton	
Motel Unit	R. Mickey		Cost Unit	J. Tapia	
Prepared By: Name:	Gabe Garcia	Position/Title:	PSC	Signature: 	
ICS 203		Date/Time:	9/22/2020 2300 hours		



FIRE WEATHER FORECAST



FORECAST NO: 6
PREDICTION FOR: Sept 23-24, 2020 0700-0700

INCIDENT NAME: West Castle Zone

UNIT: CA-SQF
SIGNED: *Andrew Gorelow*

TIME AND DATE
FORECAST ISSUED: Tue, Sep 24 @ 1800 hours

Incident Meteorologist – Andrew Gorelow

WEATHER DISCUSSION: Conditions are expected to be more stable today along with lighter winds aloft. This may help keep more smoke trapped over the fire through the afternoon making conditions poor for visibility and air quality. Although there is expected to be some eastward smoke movement above the fire, overall winds will be lighter. Surface winds will be light and terrain driven. After marginal overnight RH recoveries look for RHs to drop into the upper teens to mid-20s with high temp generally from the mid-70s to mid-80s. If smoke is trapped over the fire through the day then RHs will remain higher with lower afternoon temperatures.

SKY/WEATHER TODAY (WEDNESDAY): Sunny, but smoky. Conditions are expected to be more stable today allowing for less mixing through the afternoon. This may help keep smoke trapped in the valleys and the inversion remaining in place. Although winds aloft will be lighter, there will still be some eastern movement of smoke. Overall, winds will be terrain driven through the day with a general west flow at the ridges. RHs dropping into the upper teens to mid-20s. With the more stable conditions there is a lower chance of plume development.

MAX TEMPERATURES / MIN RELATIVE HUMIDITY:

3000 FT: 82 to 87 degrees (Little Change) / 18 to 23% (Little Change)
6000 FT: 73 to 78 degrees (Little Change) / 20 to 25% (Little Change)

EYE LEVEL WINDS:

Slope/Valley: Winds are expected to remain terrain driven through the afternoon with speeds 2 to 6 mph gusts up to 8 mph.
Ridges: West 5 mph.

MIXING HEIGHT...6,500 FT AGL **VENTILATION...**Fair-Good.
TRANSPORT WIND...West 5 mph.
CWR (0.10")...0% **LAL....**1 **HAINES....**4

SKY/WEATHER TONIGHT (WEDNESDAY NIGHT): Clear with marginal overnight RH recoveries. Inversion developing late evening below 6000 feet.

MIN TEMPERATURES / MAX RELATIVE HUMIDITY

3000 FT: 58 to 63 degrees (Down 1-3) / 30 to 40% (Little Change)
6000 FT: 51 to 56 degrees (Down 1-3) / 30 to 40% (Little Change)

EYE LEVEL WINDS:

Slope/Valley: Downslope/Downvalley 1 to 4 mph.
Ridges: Northwest 5-10 mph.

CWR (0.10")...0% **LAL....**1

THURSDAY: Sunny. Inversion lifting by early afternoon with winds becoming generally terrain driven. Little change in RHs and temperatures.

Max Temps: 73-85 **Min RH:** 18-28%. **Winds:** Morning drainage winds becoming upslope/upvalley 3-6 mph. Ridges are expected to be west to northwest 10 mph.
LAL: 1 **CWR (0.10"):** 0% **MIXING HEIGHT:** 8,000 FT AGL **HAINES:** 4

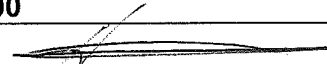
OUTLOOK for FRIDAY and SATURDAY:

Weather: Sunny. Continued dry with a warming trend. Terrain driven winds each day and light drainage winds overnight.

High Temp: 74-88 **Min RH:** 17-26% **CWR:** 0% **LAL:** 1 **Wind:** Terrain driven each day with NW to N ridges.

*****Weather Observations would be greatly appreciated. Please drop them off in front of the FBAN/IMET trailer located in the southwest portion of the ICP*****

FIRE BEHAVIOR FORECAST

FORECAST NUMBER: 8	TYPE OF FIRE: WILDFIRE
FIRE NAME: WEST CASTLE ZONE CASQF-002541	OPERATIONAL PERIOD: 9/23-9/24/20 0700-0700
DATE ISSUED: 9/22/20	TIME ISSUED: 1900
UNIT: SEQUOIA NATIONAL FOREST	SIGNED:  Typed/printed: Hugh Scanlon FBAN

INPUTS

WEATHER SUMMARY:

Sunny, but smoky. Stable atmosphere for poor smoke dispersion. Temperatures will range from the low 70's to mid 80's. Minimum humidity will be 18 to 25%. Winds will be diurnal, following the main drainages. Above the fire, winds will be West 5 mph in the afternoon. Visibility improving late afternoon. The overnight humidity recovery will range from 30-40%.

Review the weather forecast for more details

OUTPUTS

FIRE BEHAVIOR

FUEL MODEL	RATE OF SPREAD FT/MIN	FLAME LENGTH FT	SPOTTING DISTANCE	PROBABILITY OF IGNITION
GRASS	50-100	5-7	.10 mi	90%
BRUSH	80-125	18-20	.30 mi	90%
TIMBER/LITTER	4-10	2-4	.30 mi	60%

GENERAL:

Live fuel moistures are low, with the area in moderate drought. ERC's are forecast above the 97th percentile in the highest elevations. The inversion keeps fire activity in check. Stable air will restrict movement of the smoke. Expect visibility to improve by late afternoon. Active ground fire is common throughout the interior islands. Lower overnight humidity and dry conditions lead to early active burning. Firing operations becomes effective at RHs below 45%. Fire spread will tend to the east.

SPECIFIC:

Branch XXI – Conditions will be favorable for holding and mop up. Roll out remains a threat on the steep slopes. Active ground fire into fuel jackpots will flare up, with short range spotting.

Branch XXV – Favorable conditions for burning, holding, and mop up. Aviation dependent firing operations may be adversely impacted by poor visibility. Burning material on steep slopes can easily roll out across control lines and will initiate spot fires. The fire is backing down the southern portion of Dennison Mtn and is within a mile of the proposed control lines by the NF Tule River.

Branch XXIX – Fire movement will be east inside Sequoia NP. Fire will continue to back down from Dennison Mtn and has been checked up above Garfield Creek by helicopter bucket work, which is unlikely to happen today due to smoke. The surface fire progression does not favor fire reaching the SF Kaweah River in the next shift, however burning will produce a significant column, which will shade to the east.

AIR OPERATIONS: Limited visibility due to smoke and inversion layers. Visibility should improve by 1300.

SAFETY:

High Probability of Ignition is a key measure of spot fire potential. Expect short range spotting around recently burned areas with heavy fuels in the black. Monitor the POI so you know what to expect.



SAFETY MESSAGE WEST CASTLE ZONE SQF COMPLEX



1. Incident Name: **WEST CASTLE ZONE
SEQUOIA COMPLEX**

2. Operational Period: Date From: 9/23/20
Time From: 07:00

Date To: 9/24/20
Time To: 07:00

**Caution Words: Technical, Complexity, Narrow, Steep One-Lane,
Force the Hand, Dead Trees, Long-Range Spotting.**

HEALTH & WELLNESS: Wear a Mask, PLEASE!

Adhere to COVID-19 Best Practices – Wipe Surfaces & Door Handles.

MONITOR for **FATIGUE** and **DEHYDRATION**; Avoid Complacency; apply Work Rest Cycles.

AIR OPERATIONS: CLEAR the LINE!

Pre-treating and Suppression Operations; **CLEAR THE LINE.**

Understand and utilize A/G Comms Plan.

FIRING OPERATIONS: Documented Plan

Don't let pressure influence your **decision-making** process: Wear all approved PPE.

If you have time to talk about it; you have time to **document** your plan.

DOZER & HEAVY EQUIPMENT:

Maintain Communications, do not work below unit; communicate hazards to operator.

DEFENSIVE DRIVING REQUIREMENTS: Be the PROFESSIONAL.

EVALUATE your driving routes; monitor **speed**, gear selection, & brakes.

UTILIZE chocks, backers and spotters; when in doubt scout it out!

Watch speeds when driving through local communities.

FIRE BEHAVIOR: Maintain Situational Awareness & Predict.

ALWAYS wear proper PPE for the potential fire behavior – **WATCH** for **ALIGNMENT.**

Hazard Trees: Drought, Bug Kill, & Fire Weakened trees all have accident potential.

Local diurnal winds have **influence** on fires; watch for Plume Development.

Make ALL Plans Known; Mitigate and Communicate Hazards.

SAFETY FIRST, COMMUNICATE – CLEAR the LINE!

WEAR PROPER PPE, UTILIZE CHOCKS, Communicate Effectively.

4. Site Safety Plan Required? Yes No

5. Prepared by: Name: J. Buchmeier SOF1 / J. Novak SOF1(T)

ICS 208

Date/Time: September 22, 2020 / 1730

1. Incident Name: WEST CASTLE ZONE SQF COMPLEX		2. Incident Number: CA-SQF-002541
3. Incident Area	4. Hazards/Risks	5. Mitigations
DIV	HAZARDOUS ACTIONS/CONDITIONS	MITIGATIONS / WARNINGS / REMEDIES
ALL	COVID 19, ILLNESS, & HYGIENE	Adhere to local, state, federal and CDC health guidelines. Maintain social distancing when applicable. Wear a mask for yourself/others. Report any symptoms immediately to a supervisor. Hygiene, hand washing, and disinfecting of surfaces & handles often. Watch for signs and symptoms of Valley Fever, Smoke Exposure, or illnesses.
ALL	FATIGUE, HEAT, & DEHYDRATION	Don't underestimate the task at hand. Adhere to work/rest cycle for all task(s). Drink water before, during and after shifts, up to 1.5 gal. per shift. Review Heat Related Emergencies (IRPG Pg. 109). Seek shade when you can. Watch for stack-effect of fatigue and exhaustion; REST & Plan operations.
ALL	COMPLACENCY	Be alert for signs of fatigue and distractions; remain engaged. Know your LCES and maintain situational awareness. Have the right radio clone. Know your adjoining forces and FREQUENCIES . Know your mission and objectives; communicate. Follow a plan. Primary, Alternate, Contingency, Emergency on all new assignments.
ALL	FIRING OPERATIONS	Plan out all operations, document, and assure personnel are briefed. Follow the GO/NO GO checklist; don't let pressure drive the decision. Assure all PPE is donned; shrouds down! sleeves are rolled down! gloves on!
ALL	WIND	Watch alignment and rates of spread; no frontal assaults. Park into the wind; prevent injury or damage with door control. Calculate tree fall and branch release; project down-wind falling.
ALL	STEEP TERRAIN / ROLLING DEBRIS	Watch your footing while hiking in steep terrain. Be careful of loose rolling debris. Maintain Situational Awareness . Know Tree Hazards in the work area. Dangerous Mountain Roads – SLOW Defensive Driving .
ALL	FALLING MODULES, HAZARD TREES, STUMP HOLES	Identify and isolate the area to provide for the safety of others. Bug Kill & Fire Weakened; Flag and make proper notifications. Do not fall trees out of your certification level. Evaluate wind and lean prior to making cuts. Monitor footing; evaluate work area and routes; tool control is essential.
ALL	DRIVING HAZARDS	SLOW DOWN! Do 360's before moving vehicles. Utilize Chocks. Drive with headlights and seatbelts on; drive defensively. Long travel distances – fatigue; Watch Speed through communities. Utilize spotters and backers; when in doubt, scout it out. Assess Road Conditions; Flag hazard if you cannot mitigate, report.
ALL	HEAVY EQUIPMENT & DOZER SAFETY	Watch for rolling material; Monitor safe working distances. Avoid working below dozer. Utilize communication with the operator (radio or hand signals).
ALL	EXTREME FIRE BEHAVIOR	High rates of spread & frontal fire intensity. Watch for alignment conditions & spotting. Caution with added vertical development or wind-driven conditions. Drainages and steep terrain provide increased rates of spread.
ALL	AIRCRAFT OPERATIONS	Monitor air-to-ground frequencies; they are your eyes in the sky. Use air-to-ground frequency to communicate with aircraft. Use clear, concise statements when directing aircraft; clear the line . Only utilize aircraft to insert personnel on the line when necessary.
ALL	SPIKE CAMP(S)	Assure Communication and Support Timeline. Medical Support & IWI procedures are understood and followed. Safe Resting Area and Hydration Adequate; Hygiene is supported.
6. Prepared by: Joe Buchmeier SOF1/ Jason Novak SOF1(T)		
ICS 215-A	Operational Period 9/23-24/20	Time: 0700 - 0700



CAL FIRE INCIDENT MANAGEMENT TEAM 6



COVID-19 DAILY HEALTH CHECK SCREENING ALGORITHM

At the beginning of each workday:

- **Temperature Check**
Fever YES/NO? *Fever is considered $> 100.4^{\circ}$
- **Employee health Questionnaire**
 - Are you feeling ill/feverish?
 - Are you having chills?
 - Do you have new or worsening shortness of breath?
 - Do you have a new or worsening cough?
 - Do you have a new or prolonged sore throat?

If **No** fever and **No** to all questions:

Continue with Daily Operations

If **Yes** for any of these:

Wash hands, don mask and isolate from other employees

Notify your supervisor

Notify Medical Unit Leader

Employee will be evaluated for testing and/or treatment

Disinfect "high touch" surface areas

Reminders to All Employees

- Monitor yourself while you are on and off the line
- Maintain proper hand hygiene – Soap and water is preferred; if not available use hand sanitizer
- Do not shake hands, touch, or hug others
- Cover coughs or sneezes (if not masked)
- Cloth Masks should be exchanged and or washed daily
- Masks are required when out in the public on non-emergency business
- Disinfect high-touch surfaces daily
- Practice physical distancing (> 6 feet) always



CAL FIRE INCIDENT MANAGEMENT TEAM 6



COVID-19 Response Algorithm

Employee Response Action Plan

COVID-19 Positive Test or COVID-19 Positive Clinical Symptoms Presentation

- COVID 19 Symptoms: Cough, SOB, Fever or afebrile, Chills, Muscle Pain, Sore throat, Loss of taste/smell
- Employee informs Company Officer and Strike Team Leader of presumed/confirmed COVID-19 symptoms.
- Employee advised to seek evaluation by Medical Unit and CAL MAT or base camp medical unit.
- Crew initiates cleaning measures. Mask, safety glasses, gloves worn. (If needed, LOGS will assist)
- Medical Unit will notify IC, Liaison, Safety and Logistics

Incident Action Plan

- Company Officer / Strike Team Leader notified of personnel with COVID-19 positive test or symptom
- Medical Unit evaluates individual(s) and need for care and evaluation
- IC, Liaison, Safety and Logistics notification made to determine course of incident evaluation and response
- Line Chief, Agency Administrator, and Region Office updated upon notification

Facilities Response

- MEDL and Safety Notified
- Incident personnel notification
- Disinfection plan initiated
- Resource evaluated

Medical Evaluation & Contact Tracing

- Medical Unit interview personnel; List of close contacts made in the last 5 days acquired.
- All Exposed are required to wear surgical mask, self-monitor for fever/respiratory symptoms for up to 14 days (exposed personnel are subject to COVID-19 testing)
- Home Unit / Department utilized and retrospective tracking of Positive COVID-19 personnel interactions are identified within the last 5 days.
- Home Unit/ Department updated by Company Officer/ Strike Team Leader
- Public Health Department contact and update by IC or designated representative
- Positive COVID-19 Employees w/symptoms will need to be evaluated by Health Department conducting testing, prior to returning to assignment.
- Positive COVID-19 Employees w/o symptoms may be required to be evaluated and resource status will be reviewed prior to returning to assignment

ASSIGNMENT LIST (ICS 204 WF)

CONTROLLED UNCLASSIFIED
INFORMATION//BASIC

1. Incident Name: WEST CASTLE ZONE SQF COMPLEX	2. Operational Period: Date From: 09/23/20 Date To: 09/24/20 Time From: 0700 Time To: 0700	3. Branch Division XXI DD Page 1 of 1 Delta-Delta
--	---	---

4. Operations Personnel:	
Operations Section Chief: S. Corn	Night Ops: T. Ernst
Branch Director: M. Martinez (12)	Branch Safety:
Division/Group Supervisor: J. Cazier (T) (12)	Air Attack:

5. Resources Assigned:		** Resources Below in Bold are 12 Hour **					
Resource Identifier	ALS	LWD	Leader	Personnel	Request #	Hours	Reporting Location
STL RRU 9319L			A. Bennett	5	E-30174	0700-1900	ICP
DOZ PVT E-30120			P. Van Gaale	2	E-30120	0700-1900	ICP
DOZ PVT E-30125			R. Dominikus	2	E-30125	0700-1900	ICP
FALM O-30225			J. Turpin	2	O-30225	0700-1900	ICP
REAF GIRADO			A. Girado	1	O-30275	0700-1900	ICP

6. Work Assignments:
Construct dozer lines.
Construct and improve handline.
Structure defense and perimeter control.
Identify and triage structures.

7. Special Instructions:
DIVS coordinate with assigned READ to identify and avoid sensitive cultural sites where possible.

8. Communications							
Name	Ch	Function	Rx Freq	Rx Tone	Tx Freq	Tx Tone	Notes
CDF C1	1	COMMAND	151.3550N	103.5 (T8)	159.3000N	151.4 (T14)	BLUE RIDGE
CDF C11	2	COMMAND	151.1675N	103.5 (T8)	159.3975N	151.4 (T14)	CASE MTN (NORTH)
R5 T5	6	TACTICAL	167.1125N	151.4 (T14)	167.1125N	151.4 (T14)	BRANCH 21
A/G TAC W	13	A/G TAC	168.1625N		168.1625N		
CALCORD	15	MEDICAL	156.0750N	156.7 (T6)	156.0750N	156.7 (T6)	EMERGENCY COORDINATIO
GUARD 23	16	EMERGENCY	168.6250N		168.6250N	110.9 (T1)	

9. Prepared by: Name:	Chanece Uboldi	RESL-T	Signature:
ICS 204	Date/Time: 9/22/2020 2200	Personnel Count: 12	

ASSIGNMENT LIST (ICS 204 WF)

CONTROLLED UNCLASSIFIED
INFORMATION/BASIC

1. Incident Name: WEST CASTLE ZONE SQF COMPLEX	2. Operational Period: Date From: 09/23/20 Date To: 09/24/20 Time From: 0700 Time To: 0700	3. Branch XXI	Division MM
4. Operations Personnel:		Page 1 of 1	Mike-Mike


Operations Section Chief: S. Corn	Night Ops: T. Ernst
Branch Director: M. Martinez (12)	Branch Safety:
Division/Group Supervisor: A. Estabrook (T) (12)	Air Attack:

5. Resources Assigned:		** Resources Below in Bold are 12 Hour **						
Resource Identifier	ALS	LWD	Leader	Personnel	Request #	Hours	Reporting Location	
STA XSM 2275	X		B. Marra	22	E-30145	0700-0700	ICP	
CRW KRN Crew 11			M. Henry	22	C-30026	0700-1900	ICP	
DOZ TUU 4143			K. Mittel	2	E-30181	0700-0700	ICP	
DOZ PVT E-30182			J. Kurz	2	E-30182	0700-0700	ICP	
W/T PVT E-30136			D. Dixon	2	E-30136	0700-0700	ICP	
W/T PVT E-30137			B. Rodgers	1	E-30137	0700-1900	ICP	
W/T PVT E-30139			R. Straley	1	E-30139	0700-1900	ICP	
W/T PVT E-30226			J. Lovato	1	E-30226	0700-1900	ICP	
FEMP OZBIRN			S. Ozbirn	1	O-30210	0700-1900	ICP	
FEMT BANKS			M. Banks	1	O-30067	0700-1900	ICP	

6. Work Assignments:
Mop up 100'.
Construct and improve dozer and handline.
Structure defense and perimeter control.
Identify and triage structures.

7. Special Instructions:
DIVS coordinate with assigned READ to identify and avoid sensitive cultural sites where possible.

8. Communications							
Name	Ch	Function	Rx Freq	Rx Tone	Tx Freq	Tx Tone	Notes
CDF C1	1	COMMAND	151.3550N	103.5 (T8)	159.3000N	151.4 (T14)	BLUE RIDGE
CDF C11	2	COMMAND	151.1675N	103.5 (T8)	159.3975N	151.4 (T14)	CASE MTN (NORTH)
CDF T25	7	TACTICAL	159.2775N	192.8 (T16)	159.2775N	192.8 (T16)	BRANCH 21
A/G TAC W	13	A/G TAC	168.1625N		168.1625N		
CALCORD	15	MEDICAL	156.0750N	156.7 (T6)	156.0750N	156.7 (T6)	EMERGENCY COORDINATION
GUARD 23	16	EMERGENCY	168.6250N		168.6250N	110.9 (T1)	

9. Prepared by: Name:	Chanee Uboldi	RESL-T	Signature: 
ICS 204	Date/Time: 9/22/2020	2200	Personnel Count: 55

ASSIGNMENT LIST (ICS 204 WF)

CONTROLLED UNCLASSIFIED
INFORMATION//BASIC

1. Incident Name: WEST CASTLE ZONE SQF COMPLEX	2. Operational Period: Date From: 09/23/20 Date To: 09/24/20 Time From: 0700 Time To: 0700	3. Branch Division XXV TT Page 1 of 1 Tango-Tango
---	---	--

4. Operations Personnel:	
Operations Section Chief: S. Corn	Night Ops: T. Ernst
Branch Director: D. Esades (12)	Branch Safety:
Division/Group Supervisor: C. Usher (T) (12)	Air Attack:

5. Resources Assigned:	** Resources Below in Bold are 12 Hour **						
Resource Identifier	ALS	LWD	Leader	Personnel	Request #	Hours	Reporting Location
CRW SLU Fuels 3449			L. Elliot	8	C-30022	0700-1900	ICP
CRW TCU Fuels 4449			T. Pittman	7	C-30024	0700-1900	ICP
DOZ PVT E-30116			C. Hauber	2	E-30116	0700-0700	ICP
DOZ PVT E-30183			J. Hall	2	E-30183	0700-0700	ICP
W/T PVT E-30178			B. Belmares	2	E-30178	0700-0700	ICP
W/T PVT E-30180			M. Lane	2	E-30180	0700-0700	ICP
FEMT JONES			C. Jones	1	O-30065	0700-1900	ICP
FEMP SMITH			J. Smith	1	O-30394	0700-1900	ICP

6. Work Assignments:
 Construct and hold control lines for firing.
 Hold the current fire on control lines.
 Prepare structures along South Fork Road.

7. Special Instructions:
 DIVS coordinate with assigned READ to identify and avoid sensitive cultural sites where possible.

8. Communications							
Name	Ch	Function	Rx Freq	Rx Tone	Tx Freq	Tx Tone	Notes
CDF C1	1	COMMAND	151.3550N	103.5 (T8)	159.3000N	151.4 (T14)	BLUE RIDGE
CDF C11	2	COMMAND	151.1675N	103.5 (T8)	159.3975N	151.4 (T14)	CASE MTN (NORTH)
CDF T28	9	TACTICAL	151.1825N	192.8 (T16)	151.1825N	192.8 (T16)	BRANCH 25
A/G TAC W	13	A/G TAC	168.1625N		168.1625N		
CALCORD	15	MEDICAL	156.0750N	156.7 (T6)	156.0750N	156.7 (T6)	EMERGENCY COORDINATIO
GUARD 23	16	EMERGENCY	168.6250N		168.6250N	110.9 (T1)	

9. Prepared by: Name:	Chanece Uboldi	RESL-T	Signature:
ICS 204	Date/Time: 9/22/2020 2200	Personnel Count: 25	

ASSIGNMENT LIST (ICS 204 WF)

CONTROLLED UNCLASSIFIED
INFORMATION//BASIC

1. Incident Name: WEST CASTLE ZONE SQF COMPLEX	2. Operational Period: Date From: 09/23/20 Date To: 09/24/20 Time From: 0700 Time To: 0700	3. Branch Division XXV PP Page 1 of 1 Papa-Papa
---	---	--

4. Operations Personnel:	
Operations Section Chief: S. Corn	Night Ops: T. Ernst
Branch Director: D. Esades (12)	Branch Safety:
Division/Group Supervisor: R. Sonsteng (12) / M. Drum (T) (12) / T. Atteberry (12)	Air Attack:

5. Resources Assigned:	** Resources Below in Bold are 12 Hour **						
Resource Identifier	ALS	LWD	Leader	Personnel	Request #	Hours	Reporting Location
STC SLU 9340C			T. Swanson	16	E-30157	0700-1900	ICP
T/F KRN 5812			S. Riley	17	E-30167	0700-1900	ICP
ENG TLC RESCUE 14			D. Villavicencio	3	E-30207	1900-0700	ICP
STG FKU 9435G (CDCR)			R. Castillo	27	C-30003	0700-0700	ICP
CRW TLC OAK VALLEY			R. Torres	19	C-30023	0700-1900	ICP
CRW TUU Crew 1			D. Abbott	16	C-30027	0700-1900	ICP
CRW TUU Crew 2			R. High	16	C-30025	0700-1900	ICP
STL BDU 9353L			M. Breese	9	E-30175	0700-0700	ICP
DOZ PVT E-30118			M. Reichenberger	1	E-30118	0700-1900	ICP
DOZ PVT E-30124			W. Brown	2	E-30124	0700-0700	ICP
DOZ PVT E-30127			R. Voris	2	E-30127	0700-0700	ICP
DOZ PVT E-30128			D. Elliot	2	E-30128	0700-0700	ICP
DOZ PVT E-30150			C. Fry	2	E-30150	0700-0700	ICP
DOZ PVT E-30153			G. Van Gassbeek	2	E-30153	0700-0700	ICP
W/T PVT E-30135			R. Reyes	1	E-30135	0700-1900	ICP
W/T PVT E-30177			H. Lang	2	E-30177	0700-0700	ICP
FALM O-30226			T. Janowiak	2	O-30226	0700-1900	ICP
HEQB SHEW			N. Shew	1	O-30221	0700-0700	ICP
REAF WINGATE			E. Wingate	1	O-30276	0700-1900	ICP

6. Work Assignments:
 Construct and hold control lines for firing.
 Hold the current fire on control lines.
 Prepare structures along Blue Ridge Road.
 Conduct and hold firing operations.

7. Special Instructions:
 DIVS coordinate with assigned READ to identify and avoid sensitive cultural sites where possible.
 ** T. Atteberry is assigned as firing Group Supervisor. **

8. Communications

Name	Ch	Function	Rx Freq	Rx Tone	Tx Freq	Tx Tone	Notes
CDF C1	1	COMMAND	151.3550N	103.5 (T8)	159.3000N	151.4 (T14)	BLUE RIDGE
CDF C11	2	COMMAND	151.1675N	103.5 (T8)	159.3975N	151.4 (T14)	CASE MTN (NORTH)
CDF T26	8	TACTICAL	159.2925N	192.8 (T16)	159.2925N	192.8 (T16)	BRANCH 25
A/G TAC W	13	A/G TAC	168.1625N		168.1625N		
CALCORD	15	MEDICAL	156.0750N	156.7 (T6)	156.0750N	156.7 (T6)	EMERGENCY COORDINATIO
GUARD 23	16	EMERGENCY	168.6250N		168.6250N	110.9 (T1)	

9. Prepared by: Name: Chanee Uboldi RESL-T Signature:

ICS 204 Date/Time: 9/22/2020 2200 Personnel Count: 140

ASSIGNMENT LIST (ICS 204 WF)

CONTROLLED UNCLASSIFIED
INFORMATION/BASIC

1. Incident Name: WEST CASTLE ZONE SQF COMPLEX	2. Operational Period: Date From: 09/23/20 Date To: 09/24/20 Time From: 0700 Time To: 0700	3. Branch Division XXIX WW
---	---	---

Page 1 of 1 Whiskey-Whiskey

4. Operations Personnel:	
Operations Section Chief: S. Corn	Night Ops: T. Ernst
Branch Director:	Branch Safety:
Division/Group Supervisor: B. Willson (12)	Air Attack:

5. Resources Assigned:	** Resources Below in Bold are 12 Hour **							
Resource Identifier	ALS	LWD	Leader	Personnel	Request #	Hours	Reporting Location	
DOZ TUU 4141			D. Peterson	2	E-30176	0700-0700	ICP	
DOZ PVT E-30122			K. Darrah	1	E-30122	0700-1900	ICP	
DOZ PVT E-30119			L. Gill	2	E-30119	0700-0700	ICP	
DOZ PVT E-30121			B. Moody	2	E-30121	0700-0700	ICP	
DOZ PVT E-30155			M. Hooper	1	E-30155	0700-1900	ICP	
W/T PVT E-30138			N. Elliott	1	E-30138	0700-1900	ICP	
W/T PVT E-30179			R. Ertl	1	E-30179	0700-1900	ICP	
W/T PVT E-30216			B. Rose	1	E-30216	0700-1900	ICP	
MAS TCU Fuels Crew			L. Minor	1	E-30162	0700-1900	ICP	
MAS SLU Fuels Crew			M. Hider	1	E-30163	0700-1900	ICP	
REAF CHARTIER			B. Chartier	1	O-30233	0700-1900	ICP	

6. Work Assignments:
 Structure defense of Case Mountain Repeater Site.
 Monitor progress of fire spread through Bureau of Land Management.
 Scouting and constructing indirect dozer line.
 Structure Defense.

7. Special Instructions:

8. Communications							
Name	Ch	Function	Rx Freq	Rx Tone	Tx Freq	Tx Tone	Notes
CDF C1	1	COMMAND	151.3550N	103.5 (T8)	159.3000N	151.4 (T14)	BLUE RIDGE
CDF C11	2	COMMAND	151.1675N	103.5 (T8)	159.3975N	151.4 (T14)	CASE MTN (NORTH)
CDF T29	10	TACTICAL	151.3475N	192.8 (T16)	151.3475N	192.8 (T16)	BRANCH 29
A/G CMD	14	A/G CMD	169.1500N		169.1500N		OVERHEAD USE ONLY
CALCORD	15	MEDICAL	156.0750N	156.7 (T6)	156.0750N	156.7 (T6)	EMERGENCY COORDINATIO
GUARD 23	16	EMERGENCY	168.6250N		168.6250N	110.9 (T1)	

9. Prepared by: Name: Chanece Uboldi RESL-T Signature:

ICS 204 Date/Time: 9/22/2020 2200 Personnel Count: 14

ASSIGNMENT LIST (ICS 204 WF)

CONTROLLED UNCLASSIFIED
INFORMATION//BASIC

1. Incident Name:	2. Operational Period:	3. Branch	Division
WEST CASTLE ZONE SQF COMPLEX	Date From: 09/23/20 Date To: 09/24/20 Time From: 0700 Time To: 0700	XXIX	YY

4. Operations Personnel:		Page 1 of 1	Yankee-Yankee
Operations Section Chief: S. Corn	Night Ops: T. Ernst		
Branch Director:	Branch Safety:		
Division/Group Supervisor: J. Suarez (12)	Air Attack:		

5. Resources Assigned:	** Resources Below in Bold are 12 Hour **						
Resource Identifier	ALS	LWD	Leader	Personnel	Request #	Hours	Reporting Location
CRW KNP 91			R. Garlapow	10	O-60003	0700-1900	ICP
DOZ PVT E-30123			L. Moosios	1	E-30123	0700-1900	ICP
DOZ PVT E-30126			B. Rowley	1	E-30126	0700-1900	ICP
W/T PVT E-30217			M. Vazzana	1	E-30217	0700-1900	ICP
W/T PVT E-30218			P. Ramos	1	E-30218	0700-1900	ICP
REAF KRETSCH			J. Kretsch	1	O-60004	0700-1900	ICP

6. Work Assignments:
 Structure defense.
 Monitor progress of fire spread through Sequoia National Park.
 Scouting and constructing indirect handline.

7. Special Instructions:

8. Communications							
Name	Ch	Function	Rx Freq	Rx Tone	Tx Freq	Tx Tone	Notes
CDF C1	1	COMMAND	151.3550N	103.5 (T8)	159.3000N	151.4 (T14)	BLUE RIDGE
CDF C11	2	COMMAND	151.1675N	103.5 (T8)	159.3975N	151.4 (T14)	CASE MTN (NORTH)
CDF T30	11	TACTICAL	151.3925N	192.8 (T16)	151.3925N	192.8 (T16)	BRANCH 29
A/G CMD	14	A/G CMD	169.1500N		169.1500N		OVERHEAD USE ONLY
CALCORD	15	MEDICAL	156.0750N	156.7 (T6)	156.0750N	156.7 (T6)	EMERGENCY COORDINATIO
GUARD 23	16	EMERGENCY	168.6250N		168.6250N	110.9 (T1)	

9. Prepared by: Name: Chaneece Uboldi RESL-T
 Signature:

ICS 204 Date/Time: 9/22/2020 2200 Personnel Count: 15

DIVISION ASSIGNMENT LIST		Branch	Division/Group
Incident Name		I	INDIA / LIMA / NOVEMBER
EAST CASTLE ZONE SQF COMPLEX		Operational Period	
		Date: 9/23/2020 to 9/24/2020	Time: 0600-1800

Operations Personnel			
Operations Chief	Pat Russell (DAY) Bruce Carlisle (NIGHT)	Branch Director	Mike Klimek (530) 604-4720
Air Operations	Terry Harris	Division/Group Supervisor	Jake Botts (530) 736-3335
Safety Officer	Ron Bertsch Paul Leusch		

Division/Group Supervisor						
Strike Team/Task Force/ Resource Designator	Req#	Last Shift	Leader	# Persons	Drop Off Point /Time	Pick Up Point / Time
ENG3 Gonzales	E-256	9/26	Steve Reason	3	Troy Meadow 0600	Troy Meadow 2100
ENG6 Cate Land Fire	E-203	10/2	Vanessa Aldrich	3	Troy Meadow 0600	Troy Meadow 2100
ENG6 White Horse	E-199	9/30	Jason McGaughy	3	Troy Meadow 0600	Troy Meadow 2100
ENG6 Late Summers 1	E-200	9/28	Josh Crollard	3	Troy Meadow 0600	Troy Meadow 2100
ENG6 Late Summers 2	E-201	9/28	Brad Beck	3	Troy Meadow 0600	Troy Meadow 2100
ENG6 R&R Fire	E-205	9/29	Mike Cox	3	Troy Meadow 0600	Troy Meadow 2100
CHIP	E-189	9/24	Don Kelley	2	Troy Meadow 0600	Troy Meadow 2100
EXCA	E-187	9/25	Kody Williams	1	Troy Meadow 0600	Troy Meadow 2100
KNP E42	E-418	9/30	Jeff Singer	3	Troy Meadow 0600	Troy Meadow 2100
EMPF	O-497	9/23	Tom Kavanaugh	1	Troy Meadow 0600	Troy Meadow 2100
EMPF	O-551	9/23	Matthew Heckman	1	Troy Meadow 0600	Troy Meadow 2100
EMPF	O-581	9/25	Joshua Terry	1	Troy Meadow 0600	Troy Meadow 2100
EMPF	O-1102	10/6	Chad Mekterian	1	Troy Meadows 0600	Troy Meadows 2100
AMBU	E-52	10/3	Castle 2	2	Troy Meadow 0600	Troy Meadow 2100
REAF	O-858	9/26	Lauren Archer	1	Troy Meadow 0600	Troy Meadow 2100

Work Assignments

Task: Maintain readiness and structure protection in: Bonita Meadow, West Meadow, Beach Meadow and Blackrock Work Center. Recon and develop a structure protection plan for Monache. Continue to go direct with crews and equipment on eastern finger of fire north of Beach Meadows. Monitor DIV N from the air and utilize air resources as needed to keep green islands from impacting control lines. Assist with point protection as needed.

Purpose: Limit impact to values at risk.


End State: Values at risk are not impacted by fire. A plan to protect values at risk is developed for the Monache area. The spread of fire to the south and east is limited in divisions L/N.

Special Instructions

- A/G Tac for Branch Five: RX169.200, TX 169.200. This needs to be hand programmed.
- Personnel to notify DIVS of potentially sensitive cultural materials.
- Castle Ambulance 3 staged at Whitsett Base Camp. Castle Ambulance 2 staged at the Blackrock Ranger Station. REMS available to all divisions.
- Prioritization of all control or containment actions taken during the operational period in this Division will be at the discretion of the DIVS. Actions may have to be taken by the DIVS that are not enumerated in today's IAP. These actions would be a result of a significant change in actual or expected fire behavior over and above that anticipated at the time the IAP was prepared. These actions will be coordinated with and approved by the OSC whenever possible.

Division/Group Communication Summary

Function	Channel	Frequency RX	Frequency TX	TONE RX	TONE TX	Function	Channel	Frequency RX	Frequency TX
COMMAND	2	170.6875	166.5750	151.4	151.4	A/G TAC	13	172.3500	172.3500
COMMAND	3	172.5500	162.1875	151.4	151.4	A/G CMD	14	169.1500	169.1500
NIFC T7	9	168.2500	168.2500	151.4	151.4				

Prepared by Jay Shaffer – RESL	Approved By Carrie Dennett - PSC 	Date 9/22/2020	Time 1800
-----------------------------------	---	-------------------	--------------

DIVISION ASSIGNMENT LIST		Branch	Division/Group
Incident Name		I	PONDEROSA Page 1 of 2
EAST CASTLE ZONE SQF COMPLEX		Operational Period	
		Date: 9/23/2020 to 9/24/2020	Time: 0600-1800

Operations Personnel			
Operations Chief	Pat Russell (Day) Bruce Carlisle (Night)	Branch Director	Mike Klimek (530) 604-4720
Air Operations	Terry Harris	Division/Group Supervisor	Val Linch (661) 487-2636
Safety Officer	Ron Bertsch Paul Leusch		

Resources Assigned This Period						
Strike Team/Task Force/ Resource Designator	Req#	Last Shift	Leader	# Persons	Drop Off Point /Time	Pick Up Point / Time
WTT2 Dust Busters	E-89	9/24	Albert Angulo	1	Whitsett Base 0600	Whitsett Base 2100
TFLD	O-947	9/28	Ron Seymour	1	Whitsett Base 0600	Whitsett Base 2100
ENG3 Green Valley	E-356	10/6	Leader pending	3	Whitsett Base 0600	Whitsett Base 2100
ENG3 Avondale Brush	E-357	10/6	Leader pending	4	Whitsett Base 0600	Whitsett Base 2100
ENG3 Tri City Fire	E-358	10/6	Leader pending	4	Whitsett Base 0600	Whitsett Base 2100
ENG3 Brush 302	E-359	9/29	Chris Ader	3	Whitsett Base 0600	Whitsett Base 2100
ENG6 J3 Contracting 1	E-355	9/28	Ric Hodges	3	Whitsett Base 0600	Whitsett Base 2100
ENG6 J3 Contracting 2	E-364	9/28	John Piety	3	Whitsett Base 0600	Whitsett Base 2100
WTT2 Humphries	E-334	9/29	Daniel French	1	Whitsett Base 0600	Whitsett Base 2100
WTT2 Hart 1	E-348	9/27	Robert McCleve	1	Whitsett Base 0600	Whitsett Base 2100
WTT2 Hart 2	E-351	9/27	Jacob Tennyson	1	Whitsett Base 0600	Whitsett Base 2100

Work Assignments

Task: Assess opportunities and implement point source protection to values in the Ponderosa, Quaking Aspen and Peppermint Work Center areas where feasible and safe to engage. Continue to utilize aircraft to limit fire spread around values. Implement firing operations as directed by Branch 1. Coordinate suppression actions with adjacent divisions.

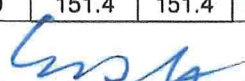
Purpose: Minimize fire impacts to values within the mountain communities located within the division.

End State: Limit fire spread into additional values at risk to protect communities and infrastructure.

Special Instructions

- Personnel to notify DIVS of potentially sensitive cultural materials.
- Castle Ambulance 3 staged at Whitsett Base Camp. Castle Ambulance 2 staged at Blackrock Ranger Station. REMS available to all divisions.
- Prioritization of all control or containment actions taken during the operational period in this Division will be at the discretion of the DIVS. Actions may have to be taken by the DIVS that are not enumerated in today's IAP. These actions would be a result of a significant change in actual or expected fire behavior over and above that anticipated at the time the IAP was prepared. These actions will be coordinated with and approved by the OSC whenever possible.

Division/Group Communication Summary

Function	Channel	Frequency RX	Frequency TX	TONE RX	TONE TX	Function	Channel	Frequency RX	Frequency TX	
COMMAND	1	170.0000	166.6750	151.4	151.4	A/G TAC	13	172.3500	172.3500	
NIFC T1	5	168.0500	168.0500	151.4	151.4	A/G CMD	14	169.1500	169.1500	
Prepared by Jay Shaffer- RESL	Approved By Carrie Dennett - PSC					Date 9/22/2020	Time 1800			

DIVISION ASSIGNMENT LIST	Branch	Division/Group
Incident Name	I	PONDEROSA Page 2 of 2
EAST CASTLE ZONE SQF COMPLEX	Operational Period	
	Date: 9/23/2020 to 9/24/2020 Time: 0600-1800	

Operations Personnel

Operations Chief	Pat Russell (Day) Bruce Carlisle (Night)	Branch Director	Mike Klimek (530) 604-4720
Air Operations	Terry Harris	Division/Group Supervisor	Val Linch (661) 487-2636
Safety Officer	Ron Bertsch Paul Leusch		

Resources Assigned This Period

Strike Team/Task Force/ Resource Designator	Req#	Last Shift	Leader	# Persons	Drop Off Point /Time	Pick Up Point / Time
ENG6 High Desert	E-137	9/28	Thomas Hanks	3	Whitsett Base 0600	Whitsett Base 2100
ENG6 R Construction	E-166	9/28	Richard DeRoche	3	Whitsett Base 0600	Whitsett Base 2100
ENG6 Red Dog	E-167	9/28	Tim England	2	Whitsett Base 0600	Whitsett Base 2100
ENG6 Cibola	E-398	9/30	Jacob Randall	4	Whitsett Base 6000	Whitsett Base 2100
WTT2 49ers	E-50	9/27	Steve Smith	1	Whitsett Base 0600	Whitsett Base 2100
WTT2 Rocky Mtn	E-381	10/2	James Foster	1	Whitsett Base 0600	Whitsett Base 2100
GRD2 Kirkland	E-97	9/30	Todd Adams	2	Whitsett Base 0600	Whitsett Base 2100
SKD1 McKellar	E-214	9/24	Harley Toller	2	Whitsett Base 0600	Whitsett Base 2100
FMOD Jackson Fallers	O-996	10/2	Kyle Jackson	2	Whitsett Base 0600	Whitsett Base 2100
FMOD ACS Fallers	O-997	10/2	Craig Onken	2	Whitsett Base 0600	Whitsett Base 2100
SOFR (t)	O-393	9/23	Jacob Brollier	1	Whitsett Base 0600	Whitsett Base 2100
EMPF	O-974	9/30	Larry Hoqueisson	1	Whitsett Base 0600	Whitsett Base 2100
EMPF	O-958	9/28	Brian Boulware	1	Whitsett Base 0600	Whitsett Base 2100
REAF	O-894	9/27	Jared Kellogg	1	Whitsett Base 0600	Whitsett Base 2100

Work Assignments

Task: Assess opportunities and implement point source protection to values in the Ponderosa, Quaking Aspen and Peppermint Work Center areas where feasible and safe to engage. Continue to utilize aircraft to limit fire spread around values. Implement firing operations as directed by Branch 1. Coordinate suppression actions with adjacent divisions.

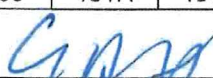
Purpose: Minimize fire impacts to values within the mountain communities located within the division.

End State: Limit fire spread into additional values at risk to protect communities and infrastructure.

Special Instructions

- Personnel to notify DIVS of potentially sensitive cultural materials.
- Castle Ambulance 3 staged at Whitsett Base Camp. Castle Ambulance 2 staged at Blackrock Ranger Station. REMS available to all divisions.
- Prioritization of all control or containment actions taken during the operational period in this Division will be at the discretion of the DIVS. Actions may have to be taken by the DIVS that are not enumerated in today's IAP. These actions would be a result of a significant change in actual or expected fire behavior over and above that anticipated at the time the IAP was prepared. These actions will be coordinated with and approved by the OSC whenever possible.

Division/Group Communication Summary

Function	Channel	Frequency RX	Frequency TX	TONE RX	TONE TX	Function	Channel	Frequency RX	Frequency TX
COMMAND	1	170.0000	166.6750	151.4	151.4	A/G TAC	13	172.3500	172.3500
NIFC T1	5	168.0500	168.0500	151.4	151.4	A/G CMD	14	169.1500	169.1500
Prepared by Jay Shaffer – RESL	Approved By Carrie Dennett - PSC 				Date	9/22/2020		Time 1800	

DIVISION ASSIGNMENT LIST	Branch	Division/Group
Incident Name	I	ZULU
EAST CASTLE ZONE SQF COMPLEX	Operational Period	
	Date: 9/23/2020 to 9/24/2020 Time: 0600-1800	

Operations Personnel			
Operations Chief	Pat Russell (Day) Bruce Carlisle (Night)	Branch Director	Mike Klimek (530) 604-4720
Air Operations	Terry Harris	Division/Group Supervisor	Brian Tai (510) 590-1620 Scott Chapman (T) (805) 755-3022
Safety Officer	Ron Bertsch Paul Leusch		

Resources Assigned This Period						
Strike Team/Task Force/ Resource Designator	Req#	Last Shift	Leader	# Persons	Drop Off Point /Time	Pick Up Point / Time
HC1 Inyo	C-106	9/30	Joel Schilling	19	Whitsett Base 0600	Whitsett Base 2100
HC1 Los Padres	C-110	9/28	Matt Aoki	19	Whitsett Base 0600	Whitsett Base 2100
TFLD	O-259	9/23	Isaac Solomon	1	Whitsett Base 0600	Whitsett Base 2100
TFLD (t)	O-1027	10/2	Dane Ostler	1	Whitsett Base 0600	Whitsett Base 2100
ENG3 BLM E3130	E-399	10/2	Juan Najera	6	Whitsett Base 0600	Whitsett Base 2100
ENG3 San Juan County E31	E-365	9/30	Aarion Austin	3	Whitsett Base 0600	Whitsett Base 2100
ENG4 Troy Fire Service E4	E-134	10/5	Dan Hokanson	3	Whitsett Base 0600	Whitsett Base 2100
ENG6 Interior 5-5	E-371	10/2	Chase Strand	3	Whitsett Base 0600	Whitsett Base 2100
ENG6 BLM E3143	E-395	10/2	Cuahutemoc Baltazar	4	Whitsett Base 0600	Whitsett Base 2100
ENG6 Arkansas FS E652	E-397	10/2	Nick Kerr	5	Whitsett Base 0600	Whitsett Base 2100
WTT2 Dust Busters	E-49	9/25	Nathan Stutz	2	Whitsett Base 0600	Whitsett Base 2100
WTT2 Valley Farm	E-88	10/3	Jeff Bates	1	Whitsett Base 0600	Whitsett Base 2100
WTT2 SQF	E-352	9/30	Jaime Ayala	2	Whitsett Base 0600	Whitsett Base 2100
EXC2 Shannon Bros	E-179	9/27	Chuck Sandborg	1	Whitsett Base 0600	Whitsett Base 2100
DOZ2 Shannon Bros	E-44	9/28	Bill Shannon	1	Whitsett Base 0600	Whitsett Base 2100
DOZ2 Connor	E-83	9/23	Tim Connor	1	Whitsett Base 0600	Whitsett Base 2100
SKD1 McKellar	E-193	9/25	Brett Strong	1	Whitsett Base 0600	Whitsett Base 2100
SKG2 Alvord Fire	E-194	9/26	John Morey	2	Whitsett Base 0600	Whitsett Base 2100
SOF1	O-934	9/28	David Provencio	1	Whitsett Base 0600	Whitsett Base 2100
EMPF	O-91	9/29	Royce Copeman	1	Whitsett Base 0600	Whitsett Base 2100
EMPF	O-1074	10/4	Silas Fisher	1	Whitsett Base 0600	Whitsett Base 2100
EMPF	O-958	9/24	Brian Boulwar	1	Whitsett Base 0600	Whitsett Base 2100
AMBU	E-170	9/27	Castle 3	2	Whitsett Base 0600	Whitsett Base 2100


Work Assignments

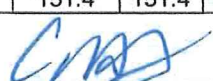
Task: Implement point source protection to values in Ponderosa, Pyles Camp, Lloyd Meadows. Scout for direct and indirect containment opportunities along the southern edge. Coordinate with adjacent divisions.

Purpose: Minimize impacts to values and limit fire spread to the southwest.

End State: Fire impacts to private property and infrastructure is minimized to the extent possible, natural resource impacts are limited, and there are no accidents or injuries to firefighters or the public.

- Special Instructions**
- Personnel to notify DIVS of potentially sensitive cultural materials.
 - Castle Ambulance 3 staged at Whitsett Base Camp. Castle Ambulance 2 staged at Blackrock Ranger Station. REMS available to all divisions.
 - Crews be prepared to spike.
 - Prioritization of all control or containment actions taken during the operational period in this Division will be at the discretion of the DIVS. Actions may have to be taken by the DIVS that are not enumerated in today's IAP. These actions would be a result of a significant change in actual or expected fire behavior over and above that anticipated at the time the IAP was prepared. These actions will be coordinated with and approved by the OSC whenever possible.

Division/Group Communication Summary									
Function	Channel	Frequency RX	Frequency TX	TONE RX	TONE TX	Function	Channel	Frequency RX	Frequency TX
COMMAND	1	170.0000	166.6750	151.4	151.4	A/G TAC	13	172.3500	172.3500
NIFC T7	9	168.2500	168.2500	151.4	151.4	A/G CMD	14	169.1500	169.1500
Prepared by Jay Shaffer- RESL	Approved By Carrie Dennett - PSC 				Date 9/22/2020			Time 1800	

DIVISION ASSIGNMENT LIST			Branch			Division/Group			
Incident Name			II			BRAVO			
EAST CASTLE ZONE SQF COMPLEX			Operational Period						
			Date: 9/23/2020 to 9/23/2020 Time: 0600-1800						
Operations Personnel									
Operations Chief	Pat Russell (Day) Bruce Carlisle (Night)		Branch Director			Andy Huntsberger (406) 249-5786			
Air Operations	Terry Harris		Division/Group Supervisor			Jake Ackenberg (530) 638-5605			
Safety Officer	Ron Bertsch Paul Leusch								
Resources Assigned This Period									
Strike Team/Task Force/ Resource Designator	Req#	Last Shift	Leader	# Persons	Drop Off Point /Time	Pick Up Point / Time			
HC1 Fulton	C-99	10/3	Greg Cole	20	Camp Nelson 0600	Camp Nelson 2100			
ENG4 Duke City Fire	E-367	9/30	Marcos Montoya	3	Camp Nelson 0600	Camp Nelson 2100			
ENG6 Buffalo Bill	E-132	9/30	Gregg Webster	3	Camp Nelson 0600	Camp Nelson 2100			
ENG6 Allen E619	E-312	9/29	Peter Allen	3	Camp Nelson 0600	Camp Nelson 2100			
ENG6 Double D	E-313	9/29	Matthew Dimas	2	Camp Nelson 0600	Camp Nelson 2100			
ENG6 STF E342	E-402	10/3	Justin Franklin	4	Camp Nelson 0600	Camp Nelson 2100			
DOZ2 Shannon Bros	E-45	9/27	John Shannon	1	Camp Nelson 0600	Camp Nelson 2100			
DOZ2 Westlund	E-139	10/2	Anthony Pezzi	2	Camp Nelson 0600	Camp Nelson 2100			
SOF2	O-496	9/23	Tom Nash	1	Camp Nelson 0600	Camp Nelson 2100			
SOF2 (t)	O-888	9/26	Roy Cribb	1	Camp Nelson 0600	Camp Nelson 2100			
REMS	E-217	9/26	Ray Storm	6	Camp Nelson 0600	Camp Nelson 2100			
SKD1 McKellar	E-193	9/25	Brett Strong	1	Camp Nelson 0600	Camp Nelson 2100			
Work Assignments									
<p>Task: Implement point source protection around values in Pierpoint, Camp Nelson and Coy Flat where feasible. Utilize aerial resources to limit fire spread around values at risk. Utilize direct and indirect tactics to work toward containing spread and evaluate opportunities for indirect containment lines farther to the south. Coordinate with adjacent divisions to ensure an integrated strategy. Coordinate all actions with Cal Fire Team 6.</p> <p>Purpose: Minimize impacts to surrounding communities and limit fire spread to the south and west.</p> <p>End State: Impacts to local communities and infrastructure was kept to a minimum.</p>									
Special Instructions									
<ul style="list-style-type: none"> Personnel to notify DIVS of potentially sensitive cultural materials. Castle Ambulance 3 staged at Whitsett Base Camp. Castle Ambulance 2 staged at Blackrock Ranger Station. REMS available to all divisions. Prioritization of all control or containment actions taken during the operational period in this Division will be at the discretion of the DIVS. Actions may have to be taken by the DIVS that are not enumerated in today's IAP. These actions would be a result of a significant change in actual or expected fire behavior over and above that anticipated at the time the IAP was prepared. These actions will be coordinated with and approved by the OSC whenever possible. 									
Division/Group Communication Summary									
Function	Channel	Frequency RX	Frequency TX	TONE RX	TONE TX	Function	Channel	Frequency RX	Frequency TX
COMMAND	1	170.0000	166.6750	151.4	151.4	A/G TAC	13	172.3500	172.3500
NIFC T3	6	168.6000	168.6000	151.4	151.4	A/G CMD	14	169.1500	169.1500
Prepared by Jay Shaffer – RESL		Approved By Carrie Dennett - PSC					Date 9/22/2020		Time 1800

DIVISION ASSIGNMENT LIST		Branch	Division/Group
Incident Name		II	NELSON
EAST CASTLE ZONE SQF COMPLEX		Operational Period	
		Date: 9/23/2020 to 9/24/2020	Time: 0600-1800

Operations Personnel			
Operations Chief	Pat Russell (Day) Bruce Carlisle (Night)	Branch Director	Andy Huntsberger (406) 249-5786
Air Operations	Terry Harris	Division/Group Supervisor	Bryan Duffy (559) 731-8676
Safety Officer	Ron Bertsch Paul Leusch		

Resources Assigned This Period						
Strike Team/Task Force/ Resource Designator	Req#	Last Shift	Leader	# Persons	Drop Off Point /Time	Pick Up Point / Time
S/T 2806A	E-280	9/25	Kevin Gotro	21	Camp Nelson 0600	Camp Nelson 2100
S/T 5810A	E-281	9/25	Sal Gutierrez	22	Camp Nelson 0600	Camp Nelson 2100
S/T 5186B	E-354	9/26	Dwayne Shires	20	Camp Nelson 0600	Camp Nelson 2100
ENG3 Greater Eagle	E-246	10/4	Clayton Forsyth	5	Camp Nelson 0600	Camp Nelson 2100
ENG6 Carlsbad 62	E-259	9/25	Scott Maxwell	3	Camp Nelson 0600	Camp Nelson 2100
ENG6 Sandoval Brush 22	E-260	9/25	Harris Toya	3	Camp Nelson 0600	Camp Nelson 2100
ENG6 Farmington Brush 6	E-261	9/25	Duane Bair	2	Camp Nelson 0600	Camp Nelson 2100
ENG6 Sac Mtn 218	E-262	9/25	Barbara Stephens	3	Camp Nelson 0600	Camp Nelson 2100
ENG3 SQF E323	E-442	10/2	Jesus Sanchez	5	Camp Nelson 0600	Camp Nelson 2100
WTT2 K&B	E-236	9/25	James Davis	1	Camp Nelson 0600	Camp Nelson 2100
WTT1 OES WT139	E-282	10/2	Dan De Young	2	Camp Nelson 0600	Camp Nelson 2100
WTT1 OES WT42	E-283	10/2	Jared Mcelhannon	2	Camp Nelson 0600	Camp Nelson 2100
WTT1 WT51	E-285	9/27	John Davies	2	Camp Nelson 0600	Camp Nelson 2100
SOFR (t)	O-511	9/24	Augie Barreda	1	Camp Nelson 0600	Camp Nelson 2100
EMPF	O-863	9/29	Chris Inman	1	Camp Nelson 0600	Camp Nelson 2100
AMBU5	E-337	9/23	Castle 5	2	Camp Nelson 0600	Camp Nelson 2100

Work Assignments


Task: Support line divisions with fireline perimeter control as instructed by Branch Director or Operations Section Chief. Reinforce structure protection plans with hose lays, static water supply and hazard mitigation as instructed by Group Supervisor for values at risk in Camp Nelson, Cedar Slope, Alpine Village, Sequoia Crest and Pierpoint. Assist Ponderosa Structure Group as requested by Operations Section Chief or Branch Director.

Purpose: Protect values at risk from wildfire impacts with emphasis on supporting fireline perimeter control well in advance of direct threats to communities and improvements.

End State: Values at risk and communities are able to operate in pre-fire condition accounting for public safety.

Special Instructions

- Personnel to notify DIVS of potentially sensitive cultural materials.
- Castle Ambulance 3 staged at Whitsett Base Camp. Castle Ambulance 2 staged at Black Rock Ranger station. REMS available to all divisions.
- Prioritization of all control or containment actions taken during the operational period in this Division will be at the discretion of the DIVS. Actions may have to be taken by the DIVS that are not enumerated in today's IAP. These actions would be a result of a significant change in actual or expected fire behavior over and above that anticipated at the time the IAP was prepared. These actions will be coordinated with and approved by the OSC whenever possible.

Division/Group Communication Summary									
Function	Channel	Frequency RX	Frequency TX	TONE RX	TONE TX	Function	Channel	Frequency RX	Frequency TX
COMMAND	1	170.0000	166.6750	151.4	151.4	A/G TAC	13	172.3500	172.3500
R5 T6	11	168.2375	168.2375	151.4	151.4	A/G CMD	14	169.1500	169.1500
Prepared by	Approved By				Date			Time	
Jay Shaffer - RESL	Carrie Dennett - PSC 				9/22/2020			1800	

DIVISION ASSIGNMENT LIST		Branch	Division/Group
Incident Name		II	WHISKEY
EAST CASTLE ZONE SQF COMPLEX		Operational Period	
		Date 9/23/2020 to 9/24/2020 Time 0600-1800	
Operations Personnel			
Operations Chief	Pat Russell (DAY) Bruce Carlisle (NIGHT)	Branch Director	Andy Huntsberger (406) 249-5786
Air Operations	Terry Harris	Division/Group Supervisor	Dan Varney (530) 250-7247
Safety Officer	Ron Bertsch Paul Leusch		

Resources Assigned This Period						
Strike Team/Task Force/ Resource Designator	Req#	Last Shift	Leader	# Persons	Drop Off Point /Time	Pick Up Point / Time
STEN	O-998	9/30	Richard Brown	1	Camp Nelson 0600	Camp Nelson 2100
ENG3 E391	E-407	9/30	Curtis Gibson	3	Camp Nelson 0600	Camp Nelson 2100
DO22 Corothers	E-405	9/30	Buck Corothers	4	Camp Nelson 0600	Camp Nelson 2100
DO22 Mtn. Landscaping	E-413	9/30	Shane Edmonds	2	Camp Nelson 0600	Camp Nelson 2100
EMPF	O-1007	10/2	Dean Carpenter	1	Camp Nelson 0600	Camp Nelson 2100
EMTF	O-935	9/28	Tim Higeons	1	Camp Nelson 0600	Camp Nelson 2100
REAF	O-1023	10/2	Krystal Kissinger	1	Camp Nelson 0600	Camp Nelson 2100

Work Assignments


Task: Prep the Crawford Road east to the 107 Road. Develop a firing plan focused on limiting adverse fire effects and be prepared to implement to prevent the negative impacts of high intensity fire. Coordinate with Tule River Fire personnel on any line construction on reservation ground. Continue to improve indirect line from the 94 Road west to zone break.

Purpose: Protect the municipal watershed and other important tribal values from high intensity fire.

End State: Values at risk are not negatively impacted by high intensity fire or heavy handed suppression action.

- Special Instructions**
- Personnel to notify DIVS of potentially sensitive cultural materials.
 - Castle Ambulance 3 staged at Whitsett Base Camp. Castle Ambulance 2 staged at Blackrock Ranger Station. REMS available to all divisions.
 - Prioritization of all control or containment actions taken during the operational period in this Division will be at the discretion of the DIVS. Actions may have to be taken by the DIVS that are not enumerated in today's IAP. These actions would be a result of a significant change in actual or expected fire behavior over and above that anticipated at the time the IAP was prepared. These actions will be coordinated with and approved by the OSC whenever possible.

Division/Group Communication Summary									
Function	Channel	Frequency RX	Frequency TX	TONE RX	TONE TX	Function	Channel	Frequency RX	Frequency TX
Command	3	172.5500	162.1875	151.4	151.4	A/G TAC	13	172.3500	172.3500
Command	4	170.1375	164.3875	151.4	151.4	A/G CMD	14	169.1500	169.1500
NIFT T5	7	166.7250	166.7250	151.4	151.4				

Prepared by Jay Shaffer - RESL	Approved By Carrie Dennett - PSC 	Date 9/22/2020	Time 1800
-----------------------------------	---	-------------------	--------------

DIVISION ASSIGNMENT LIST		Branch	Division/Group
Incident Name		NIGHT	STRUCTURE
EAST CASTLE ZONE SQF COMPLEX		Operational Period	
		Date: 9/23/2020 to 9/24/2020	Time: 1800-0600
Operations Personnel			
Operations Chief	Pat Russell (DAY) Bruce Carlisle (NIGHT)	Branch Director	
Safety Officer	Ron Bertsch Paul Leusch	Division/Group Supervisor	Bret Davidson (858)775-4586 John Lange (T) (970) 769-5389

Resources Assigned This Period

Strike Team/Task Force/ Resource Designator	Req#	Last Shift	Leader	# Persons	Drop Off Point /Time	Pick Up Point / Time
S/T 5809C ENG3	E-241	9/25	Jason Elizondo	16	Camp Nelson 1800	Camp Nelson 0900
SOF2	O-918	9/29	Jeff Pilotto	1	Camp Nelson 1800	Camp Nelson 0900

Work Assignments

Task: Provide perimeter control support and structure defense for Camp Nelson, Pierpoint, Cedar Slope, Rogers Camp, Mountain Aire, Coy Flat and Ponderosa when conditions allow. Provide mitigation and reasonable protection for nationally significant natural resources to the extent possible while maintaining firefighter safety. Assist night divisions as directed by Night Operations.


Purpose: Protect values at risk from spreading fire by supporting perimeter control operations.

End State: Values at risk and communities are defended to the extent possible while maintaining firefighter safety as our highest priority.

Special Instructions

- Personnel to notify DIVS of potentially sensitive cultural materials.
- Castle Ambulance 3 staged at Whitsett Base Camp. Castle Ambulance 2 staged at Blackrock Ranger Station. REMS available to all divisions. Medical resources will be shared between Night and Swing shifts.
- Prioritization of all control or containment actions taken during the operational period in this Division will be at the discretion of the DIVS. Actions may have to be taken by the DIVS that are not enumerated in today's IAP. These actions would be a result of a significant change in actual or expected fire behavior over and above that anticipated at the time the IAP was prepared. These actions will be coordinated with and approved by the OSC whenever possible.

Division/Group Communication Summary

Function	Channel	Frequency RX	Frequency TX	TONE RX	TONE TX	Function	Channel	Frequency RX	Frequency TX
COMMAND	See 205					A/G TAC	13	172.3500	172.3500
NIFC T1	5	168.0500	168.0500	151.4	151.4	A/G CMD	14	169.1500	169.1500
Prepared by	Approved By				Date			Time	
JayShaffer – RESL	Carrie Dennett - PSC 				9/22/2020			1300	

DIVISION ASSIGNMENT LIST		Branch	Division/Group
Incident Name			SWING
EAST CASTLE ZONE SQF COMPLEX		Operational Period	
		Date: 9/23/2020 to 9/24/2020 Time: 0900-0100	
Operations Personnel			
Operations Chief	Pat Russell (Day) Bruce Carlisle (Night)	Branch Director	
Air Operations	Terry Harris		
Safety Officer	Ron Bertsch Paul Leusch	Division/Group Supervisor	Danny Wristen (559) 912-9820

Resources Assigned This Period

Strike Team/Task Force/ Resource Designator	Req#	Last Shift	Leader	# Persons	Drop Off Point /Time	Pick Up Point / Time
HC1 Springville	C-113	9/28	Jack Medina	20	Camp Whitsett 0900	Camp Whitsett 0100
TFLD (t)	O-975	9/29	Mike Wedell	1	Camp Whitsett 0900	Camp Whitsett 0100
ENG6 J3 Contracting	E-316	9/23	Mike Cade	3	Camp Whitsett 0900	Camp Whitsett 0100
DO22 STF	E-118	9/26	Kyle Crow	1	Camp Whitsett 0900	Camp Whitsett 0100
SKG3 Crimson Peak	E-331	9/27	Jaylund Rammell	2	Camp Whitsett 0900	Camp Whitsett 0100
SKG1 Big Foot	E-353	9/28	Kurt Spencer	1	Camp Whitsett 0900	Camp Whitsett 0100
EMPF	O-864	9/24	Chris Laponis	1	Camp Whitsett 0900	Camp Whitsett 0100

Work Assignments

Task: Support divisions/groups as directed by operations. Implement firing as needed to protect values and secure any spots if safe to do so.


Purpose: To protect values at risk and provide perimeter control to impacted communities.

End State: Impacts to values at risk have been minimized and critical missions have been successfully implemented safely.

Special Instructions

- Personnel to notify DIVS of potentially sensitive cultural materials.
- Castle Ambulance 3 staged at Whitsett Base Camp. Castle Ambulance 2 staged at Blackrock Ranger Station. REMS available to all divisions. Medical resources will be shared between Night and Swing shifts.
- Prioritization of all control or containment actions taken during the operational period in this Division will be at the discretion of the DIVS. Actions may have to be taken by the DIVS that are not enumerated in today's IAP. These actions would be a result of a significant change in actual or expected fire behavior over and above that anticipated at the time the IAP was prepared. These actions will be coordinated with and approved by the OSC whenever possible.

Division/Group Communication Summary

Function	Channel	Frequency RX	Frequency TX	TONE RX	TONE TX	Function	Channel	Frequency RX	Frequency TX
COMMAND	1	170.0000	166.6750	151.4	151.4	A/G TAC	13	172.3500	172.3500
NIFC T1	5	168.0500	168.0500	151.4	151.4	A/G CMD	14	169.1500	169.1500
Prepared by	Approved By		Date		Time				
Jay Shaffer - RESL	Carrie Dennett - PSC 		9/22/2020		1800				

MEDICAL PLAN (ICS 206)

1. Incident Name: WEST CASTLE ZONE SQF COMPLEX	2. Operational Period:	Date From:	9/23/20	Date To:	9/24/20
		Time From:	0700	Time To:	0700

3. Medical Aid Stations:			
Name	Location	Contact Number/Freq	Physician
MERT	Porterville ICP	West Castle Communications	Yes
CAL-MAT	Porterville ICP	West Castle Communications	Yes

4. Transportation (indicate air or ground):			
Ambulance Service	Location	Contact Number	Level of Service
Castle 5 (ground)	H12	West Castle Communications	ALS
Castle 6 (ground)	Porterville ICP	West Castle Communications	ALS
AAV 771 (ground)	Ranch Helispot	West Castle Communications	ALS
Kern Valley FD H407 (air) 24/7 hoist	Visalia	West Castle Communications	ALS
Skylife (air) 24/7	Visalia	West Castle Communications	ALS

5. Hospitals:							
Hospital Name	Address,	Contact Number(s)/ Frequency	Travel Time		Trauma Center	Burn Center	Helipad
	Lat & Long Helipad		Air	Ground			
Kaweah Delta Hospital	400 W. Mineral King ave Visalia, CA 36 19.65'N 119 17.676'W	(559) 624-2000	15	40	Level 2	<input type="checkbox"/>	<input checked="" type="checkbox"/>
Community Regional Medical Center	2823 Fresno st. Fresno, CA 36 44.568'N 119 47.094'W	(559) 459-4220	20	60	Level 1	<input checked="" type="checkbox"/>	<input checked="" type="checkbox"/>
Sierra View Medical Center	465 W. Putnam ave Porterville, CA	(559) 784-1110		15	EDAT	<input type="checkbox"/>	<input type="checkbox"/>

6. Special Medical Emergency Procedures	
<p>Line Emergency Crew Supervisor will contact Division Supervisor with patient complaint/condition and location.</p> <p>- Division Group Supervisor Contacts:</p> <ol style="list-style-type: none"> 1. Closest EMS resource 2. Communications Unit <p>- Communications Unit Contacts:</p> <ol style="list-style-type: none"> 1. Ground or Air ambulance as requested. 2. Operations 3. Safety 4. Medical Unit <p>- Division Supervisor or designee will serve as point of contact and run medical emergency on assigned channel.</p> <ol style="list-style-type: none"> 1. A pre-assigned tactical frequency (i.e. CALCORD) should be used for IWI and only for duration of the emergency. <p>- Communications Unit will clear the Command channel for emergency traffic as needed for duration of the need.</p> <p>Direct all medical issues to the MERT.</p> <p>Camp Emergency</p> <p>- Medical Unit contacts</p> <ol style="list-style-type: none"> 1. Communications 2. Safety 3. Logistics 4. Operations 5. Crew Supervisor 6. Comp/Claims 	<p>Injury Reporting Procedures</p> <p>Nature of Injury: _____</p> <p>Location of Patient: _____</p> <p>Point of Contact: _____</p> <p>Transportation Requested by: Air _____ Ground _____</p> <p>Point of Pick-Up: _____</p> <p style="padding-left: 40px;">Lat: _____ Long: _____</p> <p>Patient Unit ID: _____</p> <p>Is an EMT with Patient: Yes _____ No _____</p> <p>Age: _____ Sex: Male _____ Female _____</p> <p>All Emergencies - Secure the area and identified witnesses for later investigation. Keep accurate log of events.</p>

Check box if aviation assets are utilized for rescue. If assets are used, coordinate with Air Operations

7. Prepared by (Medical Unit Leader): M. Hnat J. Davis (T) **Signature:** _____

8. Approved by (Safety Officer): J. Buchmeier J. Novak (T) **Signature:** _____

ICS 206 NIMS IAP Date/Time: 9/22/20 1400

ICS 205 - INCIDENT RADIO COMMUNICATIONS PLAN


1. Incident Name: WEST CASTLE ZONE SQF COMPLEX WEST CASTLE ZONE

2. Date/Time Prepared: Date: 09/22/2020 Time: 1600

3. Operational Period: Date From: 09/23/20 Date To: 09/24/20
Time From: 0700 Time To: 0700

4. Communications									
Ch#	Function	Name	Assigned To	Rx Freq	Rx Tone	Tx Freq	Tx Tone	Notes	
1	COMMAND	CDF C1	WEST CASTLE ZONE	151.3550N	103.5 (T8)	159.3000N	151.4 (T14)	BLUE RIDGE	
2	COMMAND	CDF C11	WEST CASTLE ZONE	151.1675N	103.5 (T8)	159.3975N	151.4 (T14)	CASE MTN (NORTH)	
3									
4	COMMAND	NIFF C4	EAST CASTLE ZONE	170.0000N	151.4 (T14)	166.6750N	151.4 (T14)	JORDAN PEAK-EAST CASTLE ZONE COMMAND	
5	TACTICAL	NIFF T3	DIV B	168.6000N	151.4 (T14)	168.6000N	151.4 (T14)	EAST CASTLE ZONE	
6	TACTICAL	R5 T5	DIV DD	167.1125N	151.4 (T14)	167.1125N	151.4 (T14)	BRANCH 21	
7	TACTICAL	CDF T25	DIV MM	159.2775N	192.8 (T16)	159.2775N	192.8 (T16)	BRANCH 21	
8	TACTICAL	CDF T26	DIV PP	159.2925N	192.8 (T16)	159.2925N	192.8 (T16)	BRANCH 25	
9	TACTICAL	CDF T28	DIV TT	151.1825N	192.8 (T16)	151.1825N	192.8 (T16)	BRANCH 25	
10	TACTICAL	CDF T29	DIV WW	151.3475N	192.8 (T16)	151.3475N	192.8 (T16)	BRANCH 29	
11	TACTICAL	CDF T30	DIV YY	151.3925N	192.8 (T16)	151.3925N	192.8 (T16)	BRANCH 29	
12	TACTICAL	VTAC14	OPS BRIEFING	159.4725N	156.7 (T6)	159.4725N	156.7 (T6)	RADIO BRIEFING CHANNEL	
13	A/G TAC	A/G TAC W	WEST CASTLE ZONE	168.1625N		168.1625N			
14	A/G CMD	A/G CMD	ALL ZONES	169.1500N		169.1500N		OVERHEAD USE ONLY	
15	MEDICAL	CALCORD	ALL ZONES	156.0750N	156.7 (T6)	156.0750N	156.7 (T6)	EMERGENCY COORDINATION	
16	EMERGENCY	GUARD 23	ALL ZONES	168.6250N		168.6250N	110.9 (T1)		
17									
18									
19									
20	AIRGUARD	GUARD 23	ALL ZONES	168.6250N		168.6250N	110.9 (T1)		

5. Special Instructions
 TO CONFIRM YOU HAVE THE MOST CURRENT CLONE, ENSURE YOUR DISPLAY OF CHANNEL 16 OR 20 MATCHES CHANNEL 16 OR 20 OF THE 205 - HEIGHT AND POWER ARE KEY WHEN USING RADIOS; BE AT A HIGH POINT, USE A MOBILE IF POSSIBLE, AND USE RADIO RELAYS WHEN NEEDED

6. Prepared by (Communications Unit Leader): Name: J. Brooks / C. Johns
 Signature: 
 Date/Time: 09/22/20 1600

TRAINING MESSAGE

TRAINERS

REMEMBER TO REVIEW THE TASK BOOK WITH YOUR TRAINEE EACH DAY AND SET GOALS FOR THE OPERATIONAL PERIOD.

TRAINEES

ALWAYS KEEP YOUR TASK BOOK SECURED. IF LOST, YOU RUN THE RISK OF LOSING CREDIT FOR THE TASKS COMPLETED.

Don't train until you get it right, train until you cannot get it wrong!

**Any questions please contact the
Training Specialist:
Shane Vargas (530) 410-4225**



CAL FIRE INCIDENT MANAGEMENT TEAM 6

Jeff Veik– INCIDENT COMMANDER



West Castle Zone SQF Complex CA-SQF-002541

DEMOBILIZATION PLAN - SUMMARY

GENERAL INFORMATION

The Demobilization Plan is developed to facilitate the orderly removal and checkout of resources on the incident. Surplus Personnel are available for release if they have rested for a minimum of 8 hours, are cleaned up, outfitted and have a vehicle ready to depart to their next destination.

GENERAL GUIDELINES

- **NO RESOURCES WILL LEAVE THE INCIDENT UNTIL AUTHORIZED TO DO SO BY THE DEMOB UNIT.**
- Efforts will be made to ensure that all released personnel arrive at their destination prior to 2200 hours.
- All Resources will arrive at the Demobilizations Unit at their scheduled time Only.
- All government and hired vehicles leaving the incident will have a safety inspection. If a vehicle is within 1,000 miles of a "B" service, it is the responsibility of the resource to contact Ground Support and have an oil change prior to their scheduled demobilization time.
- **All Rental Vehicles will receive a safety inspection prior to leaving the incident.**
- All trainees are to keep their time up to date and report to the Training Specialist with their task books and evaluations prior to completion of the demobilization process.
- All strike team leaders are responsible to call **South Ops at 1-800-237-3703** immediately upon being released from the incident

RESPONSIBILITIES

Unit Leaders will declare resources excess to their **Section Chief**. **Section Chiefs** will declare excess resources to the Planning Section Chief through the **Resource Unit Leader**. This should be done 36 hours in advance of anticipated release. **Use the Declaration of Excess Resources sheet or General Message Form (ICS-213) to list all excess resources.** Include the resource name, request number, name of person, date and time of declared excess, and time in which the resource will be eligible to leave. Send to the **RESOURCE UNIT** where the resource will be determined to be surplus to the incident. Surplus resources will then be able to report to the **DEMOB UNIT**, receive a Demobilization Checkout Form (ICS 221), get the appropriate ICS 221 signatures, and then return the completed ICS 221 to the DEMOB UNIT prior to final release or reassignment. Resources are not to contact **South Ops** or the expanded dispatch center unless instructed to do so by the Demobilization Unit.

RELEASE PRIORITIES

1. Organized fire departments
2. OES engines
3. Hired personnel and equipment
4. Other agencies (USFS, BLM, etc.)
5. Out of region CAL FIRE forces
6. Within Region CAL FIRE Forces
7. Unit CAL FIRE Forces

TRAVEL INFORMATION

All resources will meet agency specific requirements on hours of travel per day. For CAL FIRE hand crews, a full 24 hour reset period shall be adhered to before departing from the incident. After a crew's last operational period they shall begin the demobilization release procedure during their 24-hour off shift. In addition, they must use the following complete 24-hour period as reset time before they depart from the incident.

FINANCE MESSAGE

OPTIONS FOR SUBMITTING TIME:

1. **Fillable PDF CTR/Shift Ticket:** QR code to the fillable forms are included below. If you do not have QR capabilities finance can e-mail you the forms directly.



2. **Hard Copy CTR/Shift Ticket:** Fill out a hard copy CTR, snap a picture and email/text that into finance. If you send in a picture, please make sure it is legible and includes the supervisor's signature at the bottom! Please make sure to include your phone number in the **Remarks** in case we have questions.
3. OR you may turn in your actual hard copy as usual at Whitsett Spike Camp & Troy Meadow.
 - Please try to submit time at least every other day
 - H-Pay justifications are still required on your CTRs – "H = Hazard Pay" is not sufficient

****CONTRACTED EQUIPMENT PLEASE CONTACT FINANCE IF YOU WANT TO START THE PROCESS OF AN INTERIM PAYMENT****

2020.castle.finance@firenet.gov

Finance Main Line: 949-591-4123

TIP:

****In order to use fillable pdf forms, you must have some version of Adobe Acrobat downloaded on your device. If you have any issues opening the documents call finance for assistance. ****

REMINDER

- BE SURE to call Finance **1 day** prior to your scheduled DMOB to ensure time is complete at **949-591-4123**
- Only 1 representative per resource should go to Finance at ICP to officially close out time.

eFC-33 INITIAL INPUT FORM

1 2 3 4 5 6 7

Overhead: Complete one form per person.
All Others: Complete one form per vehicle.

Request Number	-
O - 1234	

State	Agency	Incident Number	Incident Name	Incident Index Code	Incident PCA Code
CA					
Strike Team		9	3	2	5
Resource ID - Fire Assignment		Home Station / Office Location			
S T		Mariposa			
Detwiler		4200			
2350					

YOUR NORMAL DUTY SCHEDULE	24 Hr. 8-8	24 Hr. 7-7	Other
	<input checked="" type="checkbox"/>	<input type="checkbox"/>	<input type="checkbox"/>
	One	Box	


Portal to Portal?	<input checked="" type="checkbox"/>
YOUR AGENCY	CAL FIRE
HOME UNIT	S L U
COMMIT RELEASE	Date Time
YOUR CELL PHONE #	

PERSONNEL	Schedule		First Name	Last Name	Rank or Classification	# OF Regular Duty Scheduled Hours per Day									
	A	B				Sun	Mon	Tue	Wed	Thu	Fri	Sat			
EMPLOYEE 1															
EMPLOYEE 2															
EMPLOYEE 3															
EMPLOYEE 4															
EMPLOYEE 5															
EMPLOYEE 6	<input checked="" type="checkbox"/>	One	Box	Scheurich	David	BC						24	24	24	24

VEHICLE	Schedule		Radio ID	Kind of Vehicle	ID No. x No.
	A	B			
VEHICLE 1					
VEHICLE 2					
	<input checked="" type="checkbox"/>	One	Box	E-4271	FTH
		Chainsaw	Quantity:		Y / N
					0 2 x 1 2 3

Dozers and Transports go on a single form. All others, use one form per individual vehicle.

ADDITIONAL INFORMATION BELOW



SHIFT TICKET EXAMPLE

EMERGENCY SHIFT TICKET and EVALUATION FORM					Contractor Name DOZER DUDE	
Incident or Project Name CASTLE		Incident Number CASQF 002541	Request Number E#		Operator #1 BOB SMITH	Operator #2 TOM SMITH
Agreement Number XXX - 000000 - 00					Operator Furnished By: <input checked="" type="checkbox"/> Contractor <input type="checkbox"/> Government	
Equipment Make CAT		Equipment Model / Type D6XM			Operating Supplies Furnished By: <input checked="" type="checkbox"/> Contractor <input type="checkbox"/> Government	
Serial Number 111111		Licence Number 111111			Equipment Status <input checked="" type="checkbox"/> Inspected <input checked="" type="checkbox"/> Under Agreement <input type="checkbox"/> Released by Government <input type="checkbox"/> Withdrawn by Contractor	
Equipment Use (Circle) Hours Days / Miles					Remarks/Comments ** NO DAMAGE/ NO CLAIMS	
Date Mo / Day	Start	Stop	Work	Assignment		
9/15	0700	2400	17	DIV M		
9/16	0001	0700	7	DIV M		
Vendor Rating Poor* Avg. Good Exc. N/A					Govt. Rep. Name and Position - PRINT Mike Weber	
Met Performance Expectations					Govt. Rep. Signature <i>Mike Weber</i>	
Equipment in Safe Working Condition					Contractor Signature <i>Bob Smith</i>	
Operator Skill Level					Date 09/16/20	
Operates Safely					Time 0800	
Operator's Cooperation Level					Date 09/16/20	
Overall Performance					Time 0800	
* NOTE: Any rating of POOR requires an explanation in Comment Section.					CALFIRE 297	
**Final evaluation or for more documentation, use an ICS Form 230 or equivalent.					(Rev 3-2011)	
Pink - Finance		Blue - Home Unit HE Coordinator		Yellow - Vendor		White - Govt Representative

Vendor Rating must be done.

EMERGENCY SHIFT TICKET and EVALUATION FORM					Contractor Name DUDE TRANSPORT	
The responsible Government Officer will complete this form each shift						
Incident or Project Name CASTLE		Incident Number CASQF 002541	Request Number E # Here		Operator #1 BOB SMITH	Operator #2 TOM SMITH
Agreement Number XXX - 000000 - 00					Operator Furnished By: <input checked="" type="checkbox"/> Contractor <input type="checkbox"/> Government	
Equipment Make TRANSPORT/ KENWORTH		Equipment Model / Type COZAD TRAILER /26 WHEELS			Operating Supplies Furnished By: <input checked="" type="checkbox"/> Contractor <input type="checkbox"/> Government	
Serial Number 1XP3ESMP14239012		Licence Number 9999999			Equipment Status <input checked="" type="checkbox"/> Inspected <input checked="" type="checkbox"/> Under Agreement <input type="checkbox"/> Released by Government <input type="checkbox"/> Withdrawn by Contractor	
Equipment Use (Circle) Hours Days / Miles					Remarks/Comments ** NO DAMAGE/ NO CLAIMS	
Date Mo / Day	Start	Stop	Work	Assignment		
9/15	0700	2400	17	DIV M		
9/16	0001	0700	7	DIV M		
Vendor Rating Poor* Avg. Good Exc. N/A					Govt. Rep. Name and Position - PRINT Mike Weber	
Met Performance Expectations					Govt. Rep. Signature <i>Mike Weber</i>	
Equipment in Safe Working Condition					Contractor Signature <i>Bob Smith</i>	
Operator Skill Level					Date 09/16/20	
Operates Safely					Time 0800	
Operator's Cooperation Level					Date 09/16/20	
Overall Performance					Time 0800	
* NOTE: Any rating of POOR requires an explanation in Comment Section.					CALFIRE 297	
**Final evaluation or for more documentation, use an ICS Form 230 or equivalent.					(Rev 3-2011)	
Pink - Finance		Blue - Home Unit HE Coordinator		Yellow - Vendor		White - Govt Representative

Vendor Rating must be done.

Turn shift tickets into Time Unit.



PUBLIC INFORMATION



Official Sources of Public Information

EAST CASTLE ZONE



Tulare County
Structure Status

East Zone Information Line: 559-697-5148
East Zone Email: sqfcomplex2020@gmail.com
Website: <https://inciweb.nwcg.gov/incident/7048/>
Facebook: [@SequoiaNF](#) [@inyonf](#) [@countyoftulare](#)
Twitter: [@sequoiaforest](#) [@Inyo NF](#)

WEST CASTLE ZONE



CAL FIRE EMAIL SIGN UP

West Zone Information Line: 916-618-3195
West Zone Media Line: 559-635-8206
West Zone Email Updates: <https://tinyurl.com/WestCastleFire>
Website: <https://www.fire.ca.gov/incidents>
Facebook: [@CALFIRETUU](#)
Twitter: [@CALFIRE TUU](#)



Tulare County
Evacuation Map

STATUS

Incident Start Date: August 19, 2020

Incident Start Time: 8:30 AM

Acreage:

Containment:

Cause: Lightning

Total Personnel:

Media Law

The California State Penal Code Section 409.5(d) allows the news media to enter scenes of disaster, riot, or civil disturbance. Properly identified members of the news media should not be restricted from entering locations specified within the code. However, this does not include crime scenes, and does not imply that the news media may interfere with incident operations while they are in the areas of concern. If entering such a location that is hazardous, they should be advised; media access cannot be prevented for safety reasons unless their presence would impede CAL FIRE's mitigation of the incident or the disturbing of evidence. When working around the media, remember:

- Media is **not permitted** on private property without the property owner's permission.
- If approached and questioned by the media and or the public, talk about your assignment or task at hand. Remember to wear all the appropriate PPE.
- If needed call for an incident PIO through the chain of command.
- Never speculate, give opinions or speak for others.
- There is no such thing as an "off the record" comment.

CAL FIRE Social Media Policy (Social Media 0691)

Social Media is increasingly being used by public agencies, the media as well as the public. This form of communication continues to grow rapidly in order to supply the instant gratification needs of society. Therefore, when on a CAL FIRE incident, you will adhere to the CAL FIRE Social Media Policy, 0691. You can get further information about the CAL FIRE Social Media Policy from the incident Public Information Officer. While assigned to the incident, there will be no posting of:

- Inappropriate information or materials, no opinions, no endorsements, inappropriate pictures or videos

Lost and Found

The Information Section will manage Lost and Found items for the incident. If you have lost an item leave your contact information and what you have lost at the Information Section. If you have found an item on the incident bring the item to the Information Section with your contact information as well.

Incident Base Camp Mailing Address

c/o Public Information Office/Trailer
2700 Teapot Dome
Porterville, CA 93257



INCIDENT PEER SUPPORT:



Team members are available on the incident for any peer support related needs. The best way to get a hold of them is to call them directly or stop by the ESS Trailer

In addition, there is an onsite clinician available to meet on an individual and/or group basis

Jeremy Sanders 916-281-6472

Mike Deleo 916-661-0724

John Kiszka 530-598-2615

or

CAL FIRE 24 Hr. Peer Support/Helpline

916-445-4337

Below are other Team Members not on the incident who can also be contacted directly:

Tony Howard 916-224-1543

Chris Lomanto 916-247-6974

Mike Aiello 916-584-0548

Connie Quarisa 916-213-8697

Warren Parrish 916-823-6641

Noelle Bahnmilller 916-661-0011

Nikole Schutz 916-709-0434

Krissy Shaefer 619-592-6337

Amber Henderson 805-794-1690

Shawna Powell 530-717-0667

Amy Head 916-956-3277

Watch for the signs and symptoms of stress in yourself and the people around you. Try and stay positive and get much needed rest when you can. We can do this, together!

A message to our firefighters from **ASHLEY IVERSON**.



Stay Healthy, Stay Alert and Stay Strong!

SQF “West Castle Zone” Incident Maps may be

accessed by going to:

<https://ftp.nifc.gov>

or google: “nifc ftp”

Click:

>Incident Specific Data

>calif_s

>!CALFIRE/

>2020_Incidents

>CA-SQF-002541_CastelWest

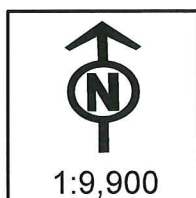
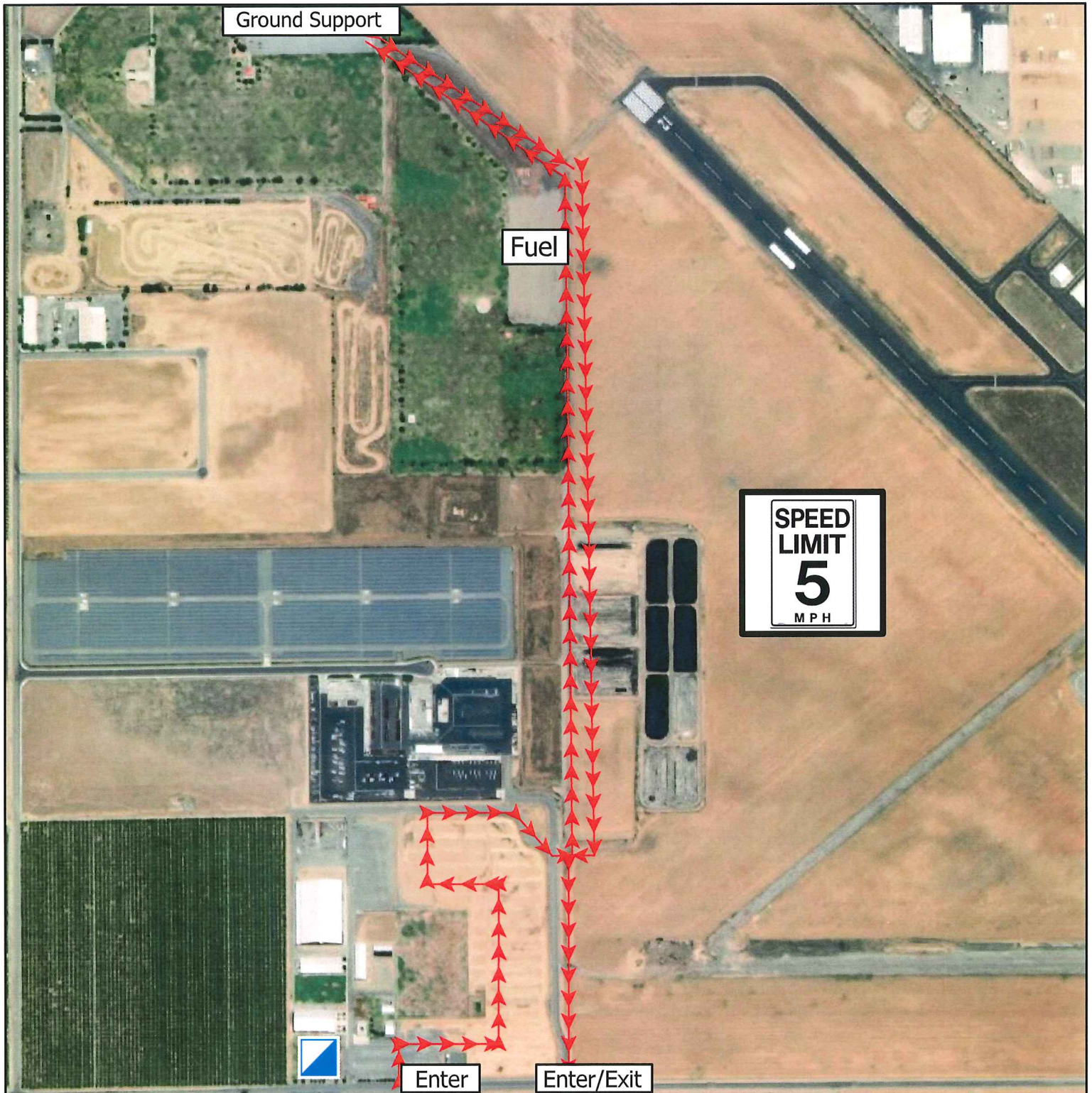
>GIS >Products

> Desired Date > Select desired map

*Generally, the single most beneficial map to download is the Ops_Overview Map



WEST CASTLE ZONE - SQF COMPLEX GROUND SUPPORT MAP



CAL FIRE - INCIDENT MANAGEMENT TEAM 6

Established 1994

IMT 6 GISS
9/22/2020
1512 Hours
NAD 83 Teale Albers

DISCLAIMER
This document is prepared as a report of the results of the investigation of the incident. It is not intended to be used as a legal document. The information contained herein is for informational purposes only and should not be used as a basis for any legal action. The information contained herein is the property of CAL FIRE and is not to be distributed outside of the agency without the express written permission of the Incident Management Team 6.

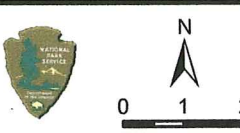
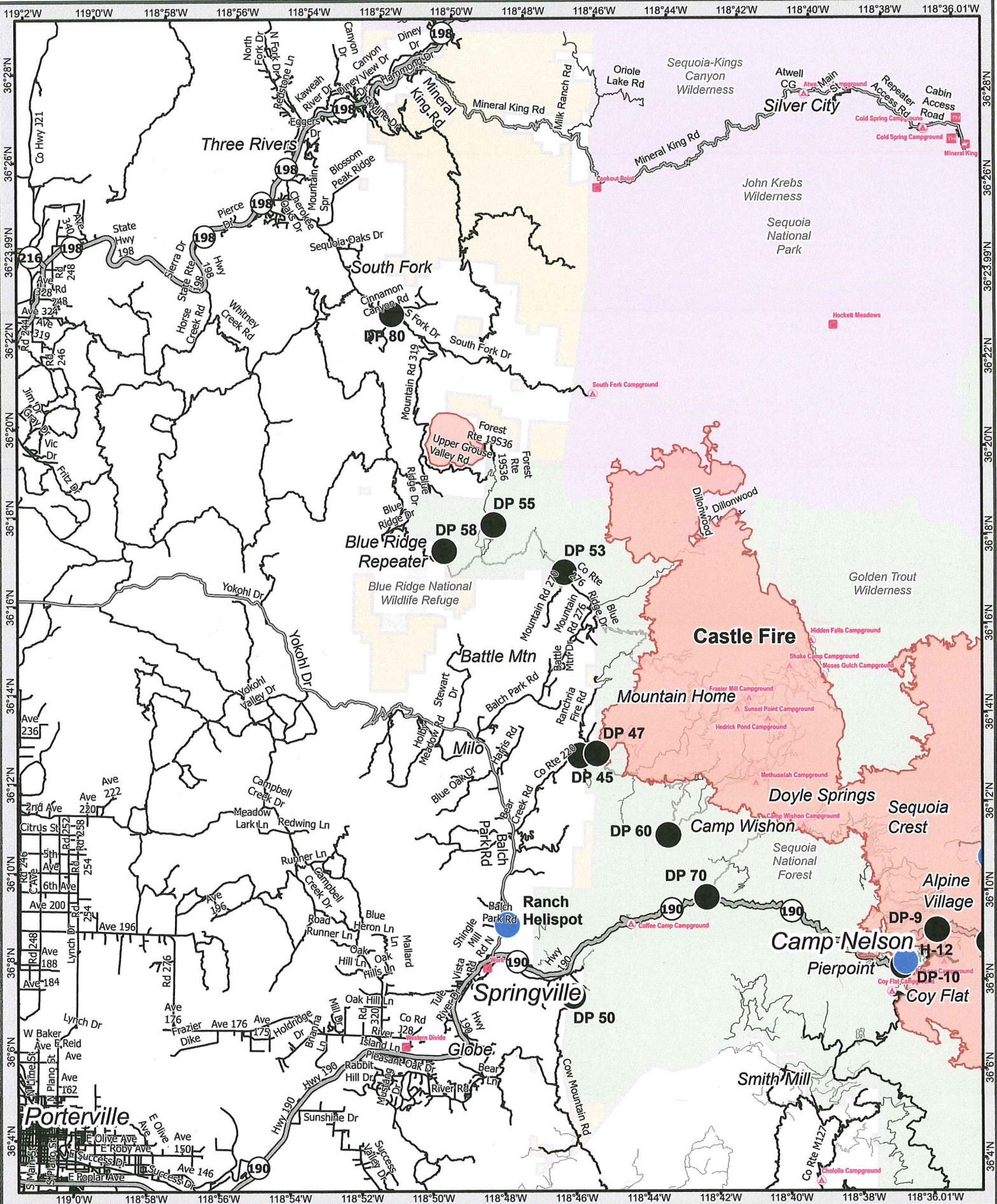


WEST CASTLE ZONE - SQF COMPLEX
BASE CAMP INDEX
CA SQF 002541



1	Liason	16	DINS
2	OES	17	Supply
3	Com 33	18	PIO
4	Com L	19	CAL-MAT Medical Supply
5	Expanded	20	Motels
6	Safety	21	Check-In/Training/Demob
7	Operations	22	Time/Comp
8	IC	23	MKU
8	IC	24	Tent Sleeping
9	IMET FBAN	25	Showers
10	Medical Unit	26	Laundry
11	Copy	27	CDCR Sleeping
12	Plans/Resources	28	Vendor Staging
13	GIS/SIT	29	Lunch, Water, Ice
14	Finance	30	MERT- Medical Emergency Response Team
15	Ordering	31	Tent Sleeping





West Zone Transportation
SQF Complex
 CA-SQF-002541

1:200,000
 IMT6 GISS



TRANSPORTATION
SQF Complex

