

INCIDENT ACTION PLAN

WEST CASTLE ZONE SQF COMPLEX

CA-SQF-002541

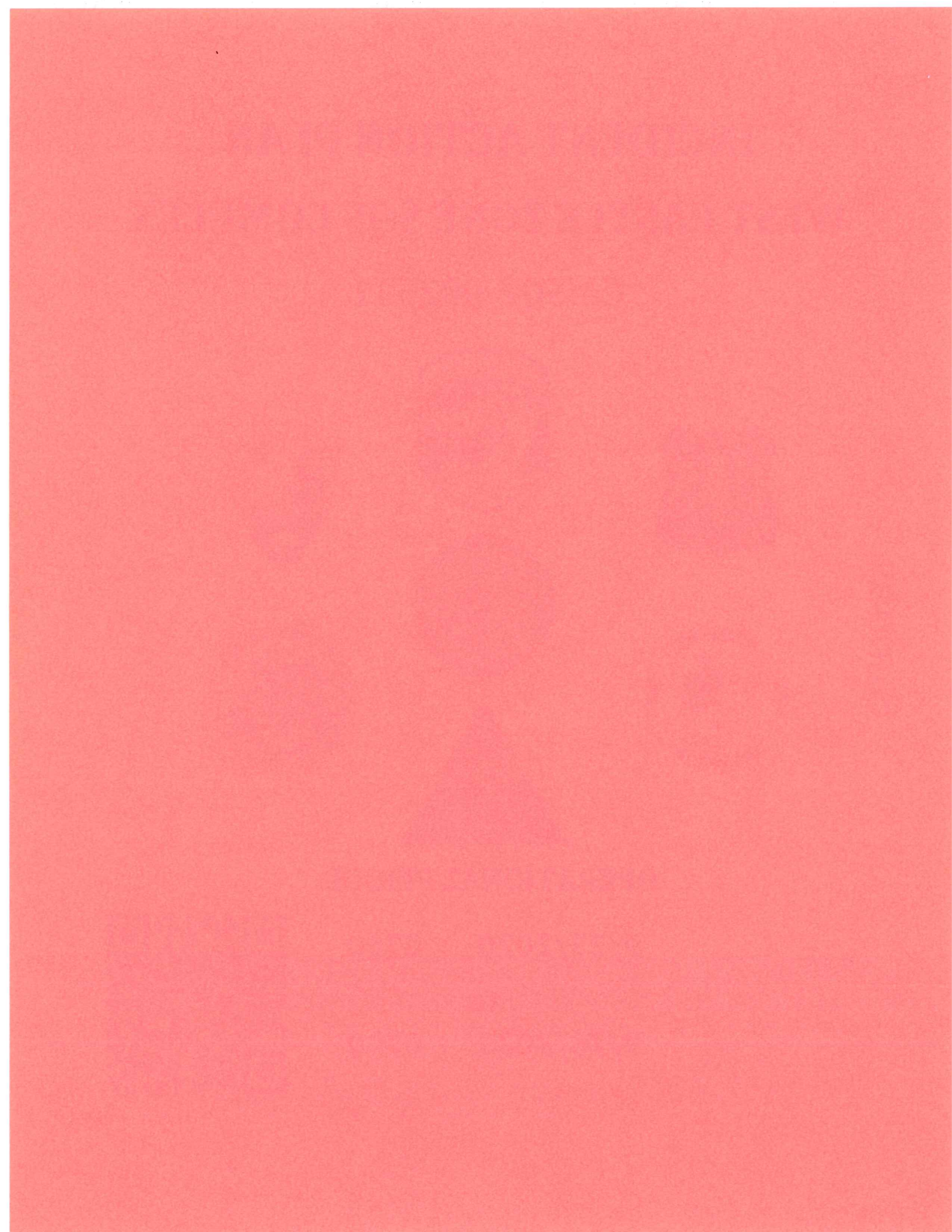
Sunday



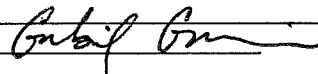
OPERATIONAL PERIOD

9/27/2020 0700
to
9/28/2020 0700





ORGANIZATION ASSIGNMENT LIST (ICS 203)

1. Incident Name: WEST CASTLE ZONE SQF COMPLEX		2. Operational Period: Date From: 9/27/2020 Time From: 0700		Date To: 9/28/2020 Time To: 0700	
3. Incident Commander(s) and Command Staff:			7. Operation Section:		
IC/UC's	J. Veik / D. Martin (T)		Operations	S. Corn	
Deputy	M. Blankenheim / M. Marcucci (T)		Deputy Operations	S. Lane (T)	
Safety Officer	J. Buchmeier / J. Novak (T)		Night Ops	T. Ernst	
Information Officer	R. Brocchini / R. Lubben (T)		Staging Area		
Liaison Officer	J. Kiszka / M. Villalpando / R. Roberts (T)		Branch	XXI	M. Martinez (12)
4. Agency/Organization Representatives:			Division/Group	DD	J. Cazier (T) (12)
Agency/Organization	Name		Division/Group	MM	A. Estabrook (T) (12)
BLM	John Hodge		Division/Group	Mtn. Home FSR	C. Waters (12)
NPS	John Zeigler / Shawn Nagle		Division/Group		
CHP Porterville	Scott Goddard		Division/Group		
Tulare Co. Sheriff's Office	Mike Boudreaux		Branch	XXV	D. Esades (12)
Tulare Co. Fire Dept.	Jeff Smith		Division/Group	TT	C. Usher (T) (12)
Tulare Co. EOC	Andrew Lockman		Division/Group	PP	R. Sonsteng (12)
Tulare Co. Roads	Tony Boland / Amer Razaq		Division/Group		
CALTRANS	Joe Burkey / Danny Estep		Division/Group		
Tule River Tribe	Neil Peyron		Division/Group		
SCE	Bret Jenkins / Dan Keveline		Branch	XXIX	
CALOES	Javier Lara		Division/Group	WW	B. Willson (12)
PG&E	Pam Perdue		Division/Group	YY	W. Swab (12)
USFS SQF Rep	Angel Prieto		Division/Group		
USFS SQF AA	Al Watson		Division/Group		
USFS SQF AA Rep.	Katie Wood		Division/Group		
BIA	Nathan Gogna / Matthew Flying		Branch		
CDCR	Manny Nunez / Dave Parker (T)		Division/Group		
CA Fish & Wildlife	Doug Barnhart		Division/Group		
5. Planning Section:			Division/Group		
Chief	S. Sherwood (T)		Division/Group		
Deputy	G. Garcia		Staging Area	ICP	
Resource Unit	J. Heald / J. Worden (T) / M. Thomas (T)		Branch		
Situation Unit	I. Crossley (T)		Division/Group		
Documentation Unit	J. Anderson / C. Uboldi (T)		Division/Group		
Demobilization Unit	T. Shevenell / F. Horn III (T)		Division/Group		
GISS	C. Poli		Division/Group		
FBAN	S. Volmer		Division/Group		
IMET	A. Gorelow		Air Operations Branch		Director: B. Kremensky
Training Tech Spec	S. Vargas		Air Support Group Supervisor		C. Inwood
6. Logistics Section			Air Tactical Group Supervisor		
Chief	S. Dohman (T)		Helibase Manager		M. Reimer (T)
Deputy Chief	J. Warden (T) / B. Brewer (T)				
Supply Unit	P. Lee / D. Zumkeller (T)		8. Finance/Administration Section:		
Facilities Unit	B. Luiz / J. Finley / R. McCracken (T)		Chief	G. Belk	
Ground Support Unit	J. Luckenbach / J. Christofferson (T)		Deputy Chief	R. Browne / J. Tapia (T)	
Communications Unit	C. Johns (T)		Time Unit	J. Navarro	
Medical Unit	M. Hnat / J. Davis (T) / R. Beeson (T)		Procurement Unit	J. Andrade	
Motel Unit	R. Mickey		Comp/Claims Unit	B. Stirton	
Food Unit	M. Rivera		Cost Unit	A. Rowe (T)	
Prepared By: Name:	Gabe Garcia	Position/Title:	PSC	Signature:	
ICS 203		Date/Time:	9/26/2020 2300 hours		



FIRE WEATHER FORECAST

FORECAST NO: 10
FORECAST FOR: Sept. 27-28, 2020 0700-0700
FORECAST ISSUED: September 26, 2020, 1800 PDT

INCIDENT NAME: West Castle Zone
UNIT: CA-SQF
SIGNED:

Incident Meteorologist – Mark Loeffelbein

WEATHER DISCUSSION: Changes will start to become visible over the fire due to a weather system passing to our north. Stable conditions will persist through early afternoon but after 1500 mixing will become deeper allowing some better smoke dispersion. Warmer and drier air will start moving into the area increasing temperatures and reducing the relative humidity. Expect a 5 to 7 degree warm up and as much as 10 percent lower relative humidity. Overnight humidity recoveries will also become poor starting Sunday night. Expect high temperatures at ICP to approach 100 degrees by Monday. Afternoon smoke will carry to the west clearing out the east side of the zone a little in the late afternoon.

SKY/WEATHER TODAY: Mostly Sunny (10-30% Cloud Cover). Smoky.

MAX TEMPERATURES / MIN RELATIVE HUMIDITY:

3000 FT: 85 to 89 degrees (5-7° Warmer) / 25 to 30% (8-10% Lower)

6000 FT: 75 to 81 degrees (5-7° Warmer) / 29 to 34% (8-10% Lower)

20 FOOT WINDS:

Slope/Valley: Winds are expected to remain terrain driven through the afternoon with speeds 3 to 6 mph gusts up to 8 mph.

Ridges: North 5-10 mph.

MIXING HEIGHT...6,000 FT AGL **VENTILATION...**Good – Very Good after 1500.

TRANSPORT WIND...East 8 mph.

CWR (0.10")...0% **LAL....**1 **HAINES....**4

SKY/WEATHER TONIGHT: Clear with poorer overnight RH recoveries. Light drainage winds.

MIN TEMPERATURES / MAX RELATIVE HUMIDITY

3000 FT: 61 to 66 degrees (2-4° Warmer) / 34 to 38% (10-15% Lower)

6000 FT: 53 to 58 degrees (2-4° Warmer) / 37 to 42% (10-15% Lower)

EYE LEVEL WINDS:

Slope/Valley: Downslope/Downvalley 1 to 4 mph.

Ridges: Northwest to North 5 to 8 mph.

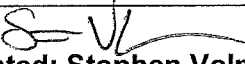
CWR (0.10")...0% **LAL....**1

EXTENDED OUTLOOK (5000 ft.):

Monday...Mostly Sunny (0-20% Cloud Cover). Smoky. **High Temp:** 87-91. **Min RH:** 20-25%. **Winds (20 foot):** Morning drainage winds becoming Upslope/Upvalley 3-6 mph. Ridges E 5-10 mph. **CWR (0.10"+):** 0% **LAL:** 1 **Haines:** 4.

Tuesday and Wednesday...Mostly Sunny (0-20% Cloud Cover). Smoky. **High Temp:** 86-90. **Min RH:** 15-20%. **Winds (20 foot):** Morning drainage winds becoming Upslope/Upvalley 3-6 mph. Ridges NW 5-10 mph. **CWR (0.10"+):** 0% **LAL:** 1 **Haines:** 4-5.

FIRE BEHAVIOR FORECAST

FORECAST NUMBER: 12	TYPE OF FIRE: WILDFIRE
FIRE NAME: WEST CASTLE ZONE CASQF-002541	OPERATIONAL PERIOD: 9/27-9/28/20 0700-0700
DATE ISSUED: 9/26/20	TIME ISSUED: 1900
UNIT: SEQUOIA NATIONAL FOREST	SIGNED:  Typed/printed: Stephen Volmer FBAN

INPUTS

WEATHER SUMMARY:

Sunny and smoky with the stable atmosphere and inversion dissipating in the late afternoon. and think inversion layer. Temperatures will range from the mid 70's to the high 80's. Minimum daytime humidity will be dropping to 25-29%. Winds will continue to be diurnal, following the main drainages. Ridgetop winds will be north 5-10 mph. Above the fire, winds will be northwest 6 mph in the afternoon. Visibility improving early afternoon. Overnight humidity recovery will be minimal ranging between 38-42%

Review the weather forecast for more details

OUTPUTS

FIRE BEHAVIOR

FUEL MODEL	RATE OF SPREAD FT/MIN	FLAME LENGTH FT	SPOTTING DISTANCE	PROBABILITY OF IGNITION
GRASS	45-75	5-7	.30 mi	68%
BRUSH	75-110	12-16	.30 mi	66%
TIMBER/LITTER	4-12	1-3	.30 mi	65%

GENERAL:

The abundance of timber and brush litter in the area is extremely dry and receptive. ERC's for the area are just under the 97th percentile. Local fuel moistures are at critical levels. Expect visibility to improve by mid afternoon in the upper elevations, with fire activity increasing as well. Active ground fire will continue to smolder, creep through, and burn out interior islands. Heavy fuels will continue to burn down and produce deep seated, very hot ash pits and stump holes. Fire weakened trees and burning snags continue to threaten control lines and roadways, as well as producing extremely hot deep seated ashpits and stumpholes.

SPECIFIC:

- Smoldering material within the interior islands has the potential to become active as the temperatures increase. Smokes building in the drainages have the potential to exhibit dangerous rates of spread and produce large amounts of ember cast should they become active.
- Rolling material will enhancing fire spread. Be alert along the roadways for entire burning log sections that could roll out, block the roadway, or igniting fire below you.
- Backing fire spread will be very slow under the current conditions. Expect rates of spread to increase when the inversion lifts for all areas.

Sunset 18:43

Sunrise 06:49

AIR OPERATIONS: Visibility will increase in the late afternoon when the inversion lifts. Transport winds will be from the east 8 mph, blowing the smoke back into the Porterville area. Ridgetops winds will be minimal. Have a secondary plan in place before requesting air assets, they may be delayed or unable to assist due to limited visibility.

SAFETY:

- Large logs will continue to roll down the hillsides, onto the roadways, and into the steep drainages.
- Weather getting hotter and drier. Track the trends, so you know when the inversion is lifting.
- Stay out of chutes, drainages, interns, and saddles...especially with unburnt islands below you.



SAFETY MESSAGE WEST CASTLE ZONE SQF COMPLEX



1. Incident Name: WEST CASTLE ZONE SEQUOIA COMPLEX	2. Operational Period: Date From: 9/27/20 Time From: 07:00	Date To: 9/28/20 Time To: 07:00
---	---	------------------------------------

MOP UP OPERATIONS; there are still hazards....

Watch for roll out; watch for snags, watch your footing.

Caution: Do not step into ash pits or root balls.

Identify, Communicate & Mitigate Hazards – Flag & Report.

HEALTH & WELLNESS: Wear a Mask, PLEASE!

Adhere to COVID-19 Best Practices – Wipe Surfaces & Door Handles.

MONITOR for FATIGUE and DEHYDRATION; Hydrate before, during, & after exertion.

Don't let complacency set in; maintain situational awareness.

AIR OPERATIONS: CLEAR the LINE!

Monitor Comms; assure the frequencies – radio discipline.

HEAVY EQUIPMENT & CONTRACTORS:

Maintain Communications & Communicate Hazards to Operators.

Work together and Coordinate Work Zones in the same area.

DEFENSIVE DRIVING REQUIREMENTS: Be the PROFESSIONAL.

EVALUATE your driving routes; monitor speed, gear selection, & brakes.

UTILIZE chocks, backers and spotters; when in doubt scout it out!

Watch cross traffic; Local traffic is not use to increased vehicle traffic; use blinkers.

Dirt Roads are narrow, silty, and worn – Use Caution.

HAZARD TREES: Predict and Prevent.

Drought, Bug Kill, & Fire Weakened Trees all have accident potential.

Local diurnal winds have influence on tree lean and fall zones.

Fall trees with in your certification; flag & avoid when mitigation can not be completed.

Don PPE for the Potential, not just the work at hand;

Hydrated: Before, During & After Work Cycles.

4. Site Safety Plan Required? Yes No

5. Prepared by: Name: J. Buchmeier SOF1 / J. Novak SOF1(T)

ICS 208

Date/Time: September 26, 2020 / 1730

1. Incident Name: WEST CASTLE ZONE SQF COMPLEX		2. Incident Number: CA-SQF-002541
3. Incident Area	4. Hazards/Risks	5. Mitigations
DIV	HAZARDOUS ACTIONS/CONDITIONS	MITIGATIONS / WARNINGS / REMEDIES
ALL	COVID 19, ILLNESS, & HYGIENE	Adhere to local, state, federal and CDC health guidelines. Maintain social distancing when applicable. Wear a mask for yourself/others. Report any symptoms immediately to a supervisor. Hygiene, hand washing, and disinfecting of surfaces & handles often. Watch for signs and symptoms of Valley Fever, Smoke Exposure, or illnesses.
ALL	FATIGUE, HEAT, & DEHYDRATION	Don't underestimate the task at hand. Adhere to work/rest cycle for all task(s). Drink water before, during and after shifts, up to 1.5 gal. per shift. Review Heat Related Emergencies (IRPG Pg. 109). Seek shade when you can. Watch for stack-effect of fatigue and exhaustion; REST & Plan operations.
ALL	COMPLACENCY	Be alert for signs of fatigue and distractions; remain engaged. Know your LCES and maintain situational awareness. Have the right radio clone. Know your adjoining forces and FREQUENCIES . Primary, Alternate, Contingency, Emergency on all new assignments.
ALL	FIRING OPERATIONS	Plan out all operations, document, and assure personnel are briefed. Follow the GO/NO GO checklist; don't let pressure drive the decision. Assure all PPE is donned; shrouds down! sleeves are rolled down! gloves on!
ALL	WIND	Watch alignment and rates of spread; no frontal assaults. Calculate tree fall and branch release; project down-wind falling.
ALL	STEEP TERRAIN / ROLLING DEBRIS	Watch your footing while hiking in steep terrain. Be careful of loose rolling debris. Maintain Situational Awareness . Know Tree Hazards in the work area. Dangerous Mountain Roads – SLOW Defensive Driving .
ALL	FALLING MODULES & HAZARD TREES.	Identify and isolate the area to provide for the safety of others. Bug Kill & Fire Weakened; Flag and make proper notifications. Do not fall trees out of your certification level. Evaluate wind and lean prior to making cuts. Monitor footing; evaluate work area and routes; tool control is essential.
ALL	MOP UP & STUMP HOLES	Look for signs of heat; watch for ash pits. Maintain situational awareness and assure good footing. Control your surroundings; watch out for each other.
ALL	DRIVING HAZARDS	SLOW DOWN! Do 360's before moving vehicles. Utilize Chocks. Drive with headlights and seatbelts on; drive defensively. Long travel distances – fatigue; Watch Speed through communities. Utilize spotters and backers; when in doubt, scout it out. Assess Road Conditions; Flag hazard if you cannot mitigate, report.
ALL	HEAVY EQUIPMENT & DOZER SAFETY	Watch for rolling material; Monitor safe working distances. Avoid working below dozer; communicate with the operator. Acknowledge Utility Partners and Contractors; assessment and repair work.
ALL	EXTREME FIRE BEHAVIOR	High rates of spread & frontal fire intensity. Watch for alignment conditions & spotting. Caution with added vertical development or wind-driven conditions. Drainages and steep terrain provide increased rates of spread.
ALL	AIRCRAFT OPERATIONS	Monitor air-to-ground frequencies; they are your eyes in the sky. Use air-to-ground frequency to communicate with aircraft. Use clear, concise statements when directing aircraft; clear the line . Only utilize aircraft to insert personnel on the line when necessary.
ALL	SPIKE CAMP(S)	Assure Communication and Support Timeline. Medical Support & IWI procedures are understood and followed. Safe Resting Area and Hydration Adequate; Hygiene is supported.
6. Prepared by: Joe Buchmeier SOF1/Jason Novak SOF1(T)		
ICS 215-A	Operational Period 9/27-28/20	Time: 0700 - 0700

ASSIGNMENT LIST (ICS 204 WF)

CONTROLLED UNCLASSIFIED
INFORMATION//BASIC

1. Incident Name: WEST CASTLE ZONE SQF COMPLEX	2. Operational Period: Date From: 09/27/20 Date To: 09/28/20 Time From: 0700 Time To: 0700	3. Branch Division XXV PP Page 1 of 1 Papa-Papa
--	---	--

4. Operations Personnel:	
Operations Section Chief: S. Corn	Night Ops: T. Ernst
Branch Director: D. Esades (12)	Branch Safety:
Division/Group Supervisor: R. Sonsteng (12)	Air Attack:

5. Resources Assigned:		** Resources Below in Bold are 12 Hour **					
Resource Identifier	ALS	LWD	Leader	Personnel	Request #	Hours	Reporting Location
STC SLU 9340C			T. Swanson	16	E-30157	0700-0700	ICP
T/F WA TF 5			M. Hall	19	E-30307	0700-1900	ICP
ENG TUU 4190			N. Perricelli	4	E-30172	0700-0700	ICP
ENG TUU 4161			W. Whitendale	4	E-30173	0700-0700	ICP
ENG TUU 4184			C. Ray	4	E-30171	0700-0700	ICP
STG BDU 9351G (CDCR)			J. Hatch	32	C-30053	0700-0700	ICP
STG RRU 9316G (CDCR)			C. Wright	33	E-30028	0700-0700	ICP
STL MVU 9334L			G. Will	8	E-30275	0700-0700	ICP
STL RRU 9319L			A. Bennett	5	E-30174	0700-1900	ICP
W/T PVT E-30135			R. Reyes	1	E-30135	0700-1900	ICP
W/T PVT E-30177			H. Lang	2	E-30177	0700-0700	ICP
FEMT BANKS			M. Banks	1	O-30067	0700-1900	ICP
FEMP OZBIRN			S. Ozbirn	1	O-30210	0700-1900	ICP

6. Work Assignments:
Mop up 300'.
Tactical Patrol.

7. Special Instructions:
For suppression repair standards, review the suppression repair plan and coordinate with the line REAF (Agency Resource Advisor)
DIVS coordinate with assigned REAF to identify and avoid sensitive cultural sites where possible.

8. Communications							
Name	Ch	Function	Rx Freq	Rx Tone	Tx Freq	Tx Tone	Notes
CDF C1	1	COMMAND	151.3550N	103.5 (T8)	159.3000N	151.4 (T14)	BLUE RIDGE
CDF C11	2	COMMAND	151.1675N	103.5 (T8)	159.3975N	151.4 (T14)	CASE MTN (NORTH)
NIFC C34	3	COMMAND	173.8250N	103.5 (T8)	165.3625N	103.5 (T8)	JORDAN PEAK-WEST CASTLE ZONE COMMAND
CDF T26	8	TACTICAL	159.2925N	192.8 (T16)	159.2925N	192.8 (T16)	BRANCH 25
A/G TAC W	13	A/G TAC	168.1625N		168.1625N		
CALCORD	15	MEDICAL	156.0750N	156.7 (T6)	156.0750N	156.7 (T6)	EMERGENCY COORDINATIO
GUARD 25	16	EMERGENCY	168.6250N		168.6250N	110.9 (T1)	

9. Prepared by: Name:	Jack Worden RESL-T	24 Hr Shift: 103	
	Signature:	12 Hr Shift: 27	
ICS 204	Date/Time: 9/26/2020 2200	Total: 130	

ASSIGNMENT LIST (ICS 204 WF)

CONTROLLED UNCLASSIFIED
INFORMATION//BASIC

1. Incident Name: WEST CASTLE ZONE SQF COMPLEX	2. Operational Period: Date From: 09/27/20 Date To: 09/28/20 Time From: 0700 Time To: 0700	3. Branch Division XXIX WW
--	---	---

Page 1 of 1 Whiskey-Whiskey

4. Operations Personnel:	
Operations Section Chief: S. Corn	Night Ops: T. Ernst
Branch Director:	Branch Safety:
Division/Group Supervisor: B. Willson (12)	Air Attack:

5. Resources Assigned:		** Resources Below in Bold are 12 Hour **					
Resource Identifier	ALS	LWD	Leader	Personnel	Request #	Hours	Reporting Location
CRW TUU Crew 2			R. High	16	C-30025	0700-1900	ICP
CRW TLC OAK VALLEY			R. Torres	19	C-30023	0700-1900	ICP
DOZ TUU 4141			D. Peterson	2	E-30176	0700-0700	ICP
DOZ PVT E-30119			L. Gill	2	E-30119	0700-0700	ICP
DOZ PVT E-30121			B. Moody	2	E-30121	0700-0700	ICP
DOZ PVT E-30122			K. Darrah	1	E-30122	0700-1900	ICP
W/T PVT E-30138			N. Elliott	1	E-30138	0700-1900	ICP
W/T PVT E-30179			R. Ertl	1	E-30179	0700-1900	ICP
W/T PVT E-30216			B. Rose	1	E-30216	0700-1900	ICP
REAF GIRADO			A. Girado	1	O-30275	0700-1900	ICP
FEMP DMYTRIW			J. Dmytriw	1	O-30212	0700-1900	ICP
FEMP MEKETARIN			C. Meketarin	1	O-30374	0700-1900	ICP

6. Work Assignments:
Mop up 300'.
Tactical Patrol.

7. Special Instructions:
For suppression repair standards, review the suppression repair plan and coordinate with the line REAF (Agency Resource Advisor)
DIVS coordinate with assigned REAF to identify and avoid sensitive cultural sites where possible.

8. Communications							
Name	Ch	Function	Rx Freq	Rx Tone	Tx Freq	Tx Tone	Notes
CDF C1	1	COMMAND	151.3550N	103.5 (T8)	159.3000N	151.4 (T14)	BLUE RIDGE
CDF C11	2	COMMAND	151.1675N	103.5 (T8)	159.3975N	151.4 (T14)	CASE MTN (NORTH)
NIFC C34	3	COMMAND	173.8250N	103.5 (T8)	165.3625N	103.5 (T8)	JORDAN PEAK-WEST CASTLE ZONE COMMAND
CDF T29	10	TACTICAL	151.3475N	192.8 (T16)	151.3475N	192.8 (T16)	BRANCH 29
A/G CMD	14	A/G CMD	169.1500N		169.1500N		OVERHEAD USE ONLY
CALCORD	15	MEDICAL	156.0750N	156.7 (T6)	156.0750N	156.7 (T6)	EMERGENCY COORDINAT
GUARD 25	16	EMERGENCY	168.6250N		168.6250N	110.9 (T1)	

9. Prepared by: Name:	Jack Worden	RESL-T	24 Hr Shift: 6
	Signature:		12 Hr Shift: 42
ICS 204	Date/Time: 9/26/2020 2200		Total: 48

Division/Group Assignment List (ICS 204 WF)
Controlled Unclassified Information//Basic

1. Incident Name:		3.				
EAST CASTLE ZONE-SQF COMPLEX		Branch:		Division/Group:		
2. Operational Period:		DAY/NIGHT				
Date/Time From: 09/27/2020 0600 SUN		Date/Time To: 09/28/2020 0600 MON		I		I / L / N
4. Operations Personnel						
OPERATIONS CHIEF		PAT RUSSELL (DAY) BRUCE CARLISLE (NIGHT)		DIVISION/GROUP SUPERVISOR		JAKE BOTTS
BRANCH DIRECTOR		MIKE KLIMEK		SAFETY		RON BERTSCH PAUL LEUSCH
5. Resources Assigned this Period						
Strike Team / Task Force / Resource Designator		LWD	Leader	Number Persons	Drop Off PT./Time	Pick Up PT./Time
SMOD SQF-HORSESHOE MEADOW O-1215		10/08	CANDICE KUTROSKY	11	TROY MEADOW/0600	TROY MEADOW/2100
HC2 CREW MEXICO 3 C-10003		10/09	STEPHANIE MARROQUIN	20	TROY MEADOW/0600	TROY MEADOW/2100
HC2 CREW MEXICO 4 C-10004		10/09	JOSA CEBALLOS	20	TROY MEADOW/0600	TROY MEADOW/2100
ENG3 PVT-GONZALES E-256		09/26	STEVE REASON	3	TROY MEADOW/0600	TROY MEADOW/2100
ENG5 PVT-CATE LAND FIRE E-203		10/02	VANESSA ALDRICH	3	TROY MEADOW/0600	TROY MEADOW/2100
ENG5 PVT-ABERASTURI E-202		10/06	RUSSELL HAYNES	3	TROY MEADOW/0600	TROY MEADOW/2100
ENG6 KNP-E42 E-418		09/30	JEFF SINGER	3	TROY MEADOW/0600	TROY MEADOW/2100
ENG6 PVT-LATE SUMMERS-2 E-201		09/28	BRAD BECK JR	3	TROY MEADOW/0600	TROY MEADOW/2100
ENG6 PVT-LATE SUMMERS-1 E-200		09/28	JOSH CROLLARD	3	TROY MEADOW/0600	TROY MEADOW/2100
ENG6 PVT-WHITE HORSE FORESTRY E-199		09/30	JASON MCGAUGHY	3	TROY MEADOW/0600	TROY MEADOW/2100
CHIP PVT-MCKELLAR E-189		10/08	DON KELLEY	2	TROY MEADOW/0600	TROY MEADOW/2100
ENG6 PVT-R&R FIRE SERVICES E-205		10/09	MICHAEL COX	3	TROY MEADOW/0600	TROY MEADOW/2100
EMPF O-1050		10/06	JAIME ORTEGA	1	TROY MEADOW/0600	TROY MEADOW/2100
PATROL O-237		10/01	RAUL C ESTRADA	1	TROY MEADOW/0600	TROY MEADOW/2100
6. Control Operations/Work Assignments:						
Task: Monitor all unstaffed locations by air. Continue structure prep work around KNP Kern Canyon Ranger Station. Continue defensible space fuels clean up.						
Purpose: Limit impact to values at risk.						
End State: Values at risk are not impacted by fire. The spread of the fire to the south and east are limited in Divisions L/N.						
7. Special Instructions:						
8. Division/Group Communication Summary						
Function	Channel	RX Frequency N/W	RX Tone/NAC	TX Frequency N/W	TX Tone/NAC	Mode
COMMAND	2	170.6875	151.4	166.5750	151.4	A
TACTICAL	8	166.7750	151.4	166.5570	151.4	A
AIR TO GROUND	13	172.3500		172.3500		A
AIR GUARD	16	168.6250		168.6250	110.9	A
9. Prepared By (Resource Unit Leader)		Approved By (Planning Section Chief)			Date	Time
JAY SHAFFER		CARRIE DENNETT			09/26/2020	2200

Division/Group Assignment List (ICS 204 WF)
Controlled Unclassified Information//Basic

1. Incident Name:				3.			
EAST CASTLE ZONE-SQF COMPLEX				Branch:		Division/Group:	
2. Operational Period: DAY/NIGHT				I		I / L / N	
Date/Time From: 09/27/2020 0600 SUN		Date/Time To: 09/28/2020 0600 MON					
4. Operations Personnel							
OPERATIONS CHIEF		PAT RUSSELL (DAY) BRUCE CARLISLE (NIGHT)		DIVISION/GROUP SUPERVISOR		JAKE BOTTS	
BRANCH DIRECTOR		MIKE KLIMEK		SAFETY		RON BERTSCH PAUL LEUSCH	
7. Special Instructions:							
<p>Castle Personnel to notify DIVS of potentially sensitive cultural materials. Identify and track suppression repair needs. Be prepared to provide needs to future Suppression Repair Group Supervisor. Backhaul excess equipment and supplies.</p>							
8. Division/Group Communication Summary							
Function	Channel	RX Frequency N/W	RX Tone/NAC	TX Frequency N/W	TX Tone/NAC	Mode	
COMMAND	2	170.6875	151.4	166.5750	151.4	A	
TACTICAL	8	166.7750	151.4	166.5570	151.4	A	
AIR TO GROUND	13	172.3500		172.3500		A	
AIR GUARD	16	168.6250		168.6250	110.9	A	
9. Prepared By (Resource Unit Leader)			Approved By (Planning Section Chief)			Date	Time
JAY SHAFFER			CARRIE DENNETT			09/26/2020	2200

Division/Group Assignment List (ICS 204 WF)
Controlled Unclassified Information//Basic

1. Incident Name:		3.				
EAST CASTLE ZONE-SQF COMPLEX		Branch:		Division/Group:		
2. Operational Period:		DAY/NIGHT				
Date/Time From: 09/27/2020 0600 SUN		Date/Time To: 09/28/2020 0600 MON		I		R STAGING
4. Operations Personnel						
OPERATIONS CHIEF		PAT RUSSELL (DAY) BRUCE CARLISLE (NIGHT)		STAM		GERI JACKSON
BRANCH DIRECTOR		MIKE KLIMEK		SAFETY		RONALD BERTSCH PAUL LEUSCH
5. Resources Assigned this Period						
Strike Team / Task Force / Resource Designator		LWD	Leader	Number Persons	Drop Off PT./Time	Pick Up PT./Time
ENGB BEN SCHMALL E-488.		10/09		1	R STAGING/0600	TBD BY OPS/1800
ENG6 AZ-CRD-3661 E-477		10/07	DAVID EAGLE	3	R STAGING/0600	TBD BY OPS/1800
ENG6 PVT-J3 CONTRACTING E-316		10/09	MARCIE MOORE	3	R STAGING/0600	TBD BY OPS/1800
HEQB O-1066		10/07	ANDREW T GOLLNICK	1	R STAGING/0600	TBD BY OPS/1800
HEQB O-1067		10/07	CHAD NICKOLS (T)	1	R STAGING/0600	TBD BY OPS/1800
FMOD PVT-WYEAST O-1088		10/09	NICKLAUS BRAD	2	R STAGING/0600	TBD BY OPS/1800
6. Control Operations/Work Assignments:						
Monitor command and maintain operational readiness.						
7. Special Instructions:						
8. Division/Group Communication Summary						
Function	Channel	RX Frequency N/W	RX Tone/NAC	TX Frequency N/W	TX Tone/NAC	Mode
COMMAND	1	170.0000	151.4	166.6750	151.4	
TACTICAL	6	168.6000	151.4	168.6000	151.4	A
AIR TO GROUND	13	172.3500		172.3500		A
AIR GUARD	16	168.6250		168.6250	110.9	A
9. Prepared By (Resource Unit Leader)			Approved By (Planning Section Chief)		Date	Time
JAY SHAFFER			CARRIE DENNETT		09/26/2020	2200

Division/Group Assignment List (ICS 204 WF)

Controlled Unclassified Information//Basic

1. Incident Name:				3.			
EAST CASTLE ZONE-SQF COMPLEX				I		SUPPRESSION REPAIR	
2. Operational Period: DAY/NIGHT							
Date/Time From: 09/27/2020 0600 SUN		Date/Time To: 09/28/2020 0600 MON					
4. Operations Personnel							
OPERATIONS CHIEF		PATRICK RUSSELL (DAY) BRUCE R CARLISLE (NIGHT)		DIVISION/GROUP SUPERVISOR			
BRANCH DIRECTOR		MIKE KLIMEK		SAFETY		RONALD E BERTSCH PAUL B LEUSCH	
5. Resources Assigned this Period							
Strike Team / Task Force / Resource Designator		LWD	Leader	Number Persons	Drop Off PT./Time	Pick Up PT./Time	
6. Control Operations/Work Assignments:							
<p>Task: Identify suppression repair needs and accomplishments. Purpose: Implement suppression repair plan. End State: To reduce future resource damage.</p>							
7. Special Instructions:							
<p>Castle Personnel to notify DIVS of potentially sensitive cultural materials. Identify and track suppression repair needs. Be prepared to provide needs to future Suppression Repair Group Supervisor. Backhaul excess equipment and supplies</p>							
8. Division/Group Communication Summary							
Function	Channel	RX Frequency N/W	RX Tone/NAC	TX Frequency N/W	TX Tone/NAC	Mode	
COMMAND							
TACTICAL							
LOGISTICS							
AIR TO GROUND							
9. Prepared By (Resource Unit Leader)			Approved By (Planning Section Chief)			Date	Time

Division/Group Assignment List (ICS 204 WF)
Controlled Unclassified Information//Basic

1. Incident Name:			3.			
EAST CASTLE ZONE-SQF COMPLEX			Branch:		Division/Group:	
2. Operational Period: DAY/NIGHT			I		W	
Date/Time From: 09/27/2020 0600 SUN		Date/Time To: 09/28/2020 0600 MON				
4. Operations Personnel						
OPERATIONS CHIEF		PAT RUSSELL (DAY) BRUCE CARLISLE (NIGHT)		DIVISION/GROUP SUPERVISOR		JAKE AKERBERG (530) 638-5605 SCOTT CHAPMAN (T)
BRANCH DIRECTOR		MIKE KLIMEK		SAFETY		RONALD BERTSCH PAUL LEUSCH
5. Resources Assigned this Period						
Strike Team / Task Force / Resource Designator		LWD	Leader	Number Persons	Drop Off PT./Time	Pick Up PT./Time
HC1 FULTON IHC C-99		10/03	GREGORY R COLE	20	WHITSETT BASE/0600	WHITSETT BASE/2100
HC2 CREW MEXICO 2 C-10002		10/09	JAIME PUNTE	19	WHITSETT BASE/0600	WHITSETT BASE/2100
ENG3 SQF-347 E-473		10/07	BRENTEN B STARLING	5	WHITSETT BASE/0600	WHITSETT BASE/2100
ENG6 PVT-LOOMIS E-478		10/08	CHARLIE REYES	3	WHITSETT BASE/0600	WHITSETT BASE/2100
ENG3 STF-E342 E-402		10/03	JUSTIN FRANKLIN	4	WHITSETT BASE/0600	WHITSETT BASE/2100
ENG3 TIA-391 E-407		10/01	CURTIS GIBSON	3	WHITSETT BASE/0600	WHITSETT BASE/2100
DO22 PVT-COROTHERS E-405		09/30	BUCK COROTHERS	2	WHITSETT BASE/0600	WHITSETT BASE/2100
FMOD PVT-TREE GUYS O-1202		10/07	JOE PADILLA	2	WHITSETT BASE/0600	WHITSETT BASE/2100
FMOD PVT-OLD GROWTH O-1201		10/09	MATT KOMAR	2	WHITSETT BASE/0600	WHITSETT BASE/2100
FMOD O-1144		10/08	GILBERT ESTRADA	2	WHITSETT BASE/0600	WHITSETT BASE/2100
FMOD PVT-ESTRADA'S O-1147		10/07	DEREK STANDLEE	2	WHITSETT BASE/0600	WHITSETT BASE/2100
STEN O-998		09/28	RICHARD BROWN	1	WHITSETT BASE/0600	WHITSETT BASE/2100
REMS 1 O-1220		10/09	CHRIS ELWART	4	WHITSETT BASE/0600	WHITSETT BASE/2100
EMPF O-863		09/29	CHRISTOPHER INMAN	1	WHITSETT BASE/0600	WHITSETT BASE/2100
EMPF O-974		09/30	LARRY HOQUEISSON	1	WHITSETT BASE/0600	WHITSETT BASE/2100
6. Control Operations/Work Assignments:						
<p>Task: Continue to support direct line with DIV Y. Continue to build contingency line from Crawford Road to the east. Patrol structures in Belknap Grove in coordination with CALFIRE Team 6.</p> <p>Purpose: Protect the municipal water shed and other important tribal values from high intensity fire.</p> <p>End State: Values at risk are not negatively impacted by high severity fire or heavy handed suppression.</p>						
8. Division/Group Communication Summary						
Function	Channel	RX Frequency N/W	RX Tone/NAC	TX Frequency N/W	TX Tone/NAC	Mode
COMMAND	4	170.1375	151.4	164.3875	151.4	A
TACTICAL	7	167.7250	151.4	167.7250	151.4	A
AIR TO GROUND	13	172.3500		172.3500		A
AIR GUARD	16	168.6250		168.6250	110.9	A
9. Prepared By (Resource Unit Leader)			Approved By (Planning Section Chief)		Date	Time
JAY SHAFFER			CARRIE DENNETT		09/26/2020	2200

Division/Group Assignment List (ICS 204 WF)
Controlled Unclassified Information//Basic

1. Incident Name:			3.			
EAST CASTLE ZONE-SQF COMPLEX			Branch: I	Division/Group: W		
2. Operational Period: DAY/NIGHT						
Date/Time From: 09/27/2020 0600 SUN		Date/Time To: 09/28/2020 0600 MON				
4. Operations Personnel						
OPERATIONS CHIEF	PAT RUSSELL (DAY) BRUCE CARLISLE (NIGHT)		DIVISION/GROUP SUPERVISOR	JAKE AKERBERG (530) 638-5605 SCOTT CHAPMAN (T)		
BRANCH DIRECTOR	MIKE KLIMEK		SAFETY	RONALD BERTSCH PAUL LEUSCH		
7. Special Instructions:						
<p>Castle Personnel to notify DIVS of potentially sensitive cultural materials. Identify and track suppression repair needs. Be prepared to provide needs to future Suppression Repair Group Supervisor. Backhaul excess equipment and supplies.</p> <p>Coordinate with Tule River Fire personnel on any line construction on reservation ground.</p>						
8. Division/Group Communication Summary						
Function	Channel	RX Frequency N/W	RX Tone/NAC	TX Frequency N/W	TX Tone/NAC	Mode
COMMAND	4	170.1375	151.4	164.3875	151.4	A
TACTICAL	7	167.7250	151.4	167.7250	151.4	A
AIR TO GROUND	13	172.3500		172.3500		A
AIR GUARD	16	168.6250		168.6250	110.9	A
9. Prepared By (Resource Unit Leader)			Approved By (Planning Section Chief)		Date	Time
JAY SHAFFER			CARRIE DENNETT		09/26/2020	2200

Division/Group Assignment List (ICS 204 WF)
Controlled Unclassified Information//Basic

1. Incident Name:			3.			
EAST CASTLE ZONE-SQF COMPLEX			Branch:		Division/Group:	
2. Operational Period: DAY/NIGHT			I		Y	
Date/Time From: 09/27/2020 0600 SUN		Date/Time To: 09/28/2020 0600 MON				
4. Operations Personnel						
OPERATIONS CHIEF		PAT RUSSELL (DAY) BRUCE CARLISLE (NIGHT)		DIVISION/GROUP SUPERVISOR		DANIEL VARNEY (530) 230-7247 MATTHEW HARDING (T)
BRANCH DIRECTOR		MIKE KLIMEK		SAFETY		RONALD BERTSCH PAUL LEUSCH
5. Resources Assigned this Period						
Strike Team / Task Force / Resource Designator		LWD	Leader	Number Persons	Drop Off PT./Time	Pick Up PT./Time
HC1 TN-CNF-CHEROKEE IHC C-115		10/07	LOGAN BALLESTEROS	22	WHITSETT BASE/0600	WHITSETT BASE/2100
HC1 EL CARISO HOTSHOTS IHC C-114		10/09	CHARLES KOTT	20	WHITSETT BASE/0600	WHITSETT BASE/2100
HC1 SPRINGVILLE IHC C-113		09/30	JACK MEDINA	18	WHITSETT BASE/0600	WHITSETT BASE/2100
HC1 LPF-LOS PADRES-IHC C-110		09/28	MATT AOKI	19	WHITSETT BASE/0600	WHITSETT BASE/2100
HC1 INF-INYO-IHC C-106		09/30	JOEL SCHILLING	20	WHITSETT BASE/0600	WHITSETT BASE/2100
HC2 PVT-DUST BUSTERS PLUS C-80		10/03	HARPER RESEWEHR	20	WHITSETT BASE/0600	WHITSETT BASE/2100
HC2 CREW MEXICO 1 C-10001		10/09	ROGELIO BETANCOUR	19	WHITSETT BASE/0600	WHITSETT BASE/2100
ENG3 PVT-J3 E-253		10/01	WESLEY WALLACE	3	WHITSETT BASE/0600	WHITSETT BASE/2100
ENG3 PVT-A-1 FIRE E-79		10/06	DENNIS GATES	3	WHITSETT BASE/0600	WHITSETT BASE/2100
ENG4 PVT-GREAT BASIN FIRE-69 E-378		10/02	DAVID GRASS	3	WHITSETT BASE/0600	WHITSETT BASE/2100
ENG6 LUR-8160 E-396		10/03	RONALD SANDLING	4	WHITSETT BASE/0600	WHITSETT BASE/2100
DO22 PVT-S KIRKLAND E-140		10/01	ERIC PYBAS	2	WHITSETT BASE/0600	WHITSETT BASE/2100
SKG1 PVT-BIGFOOT (24HRS) E-353		09/28	KURT SPENCER	1	WHITSETT BASE/0600	WHITSETT BASE/2100
SKG2 PVT-ALVORD2 E-422		10/07	SHANE RILEY	1	WHITSETT BASE/0600	WHITSETT BASE/2100
SKG3 PVT-BULL CREEK E-469		10/07	TYLER CAHOON	2	WHITSETT BASE/0600	WHITSETT BASE/2100
SOFR O-1019		10/07	JOE LABAK	1	WHITSETT BASE/0600	WHITSETT BASE/2100
FMOD PVT-ESTRADA'S O-1145		10/07	DENNIS POINT	2	WHITSETT BASE/0600	WHITSETT BASE/2100
FMOD O-596		09/26	GARY BALMAIN	2	WHITSETT BASE/0600	WHITSETT BASE/2100
FMOD PVT-SWEDBURG O-599		10/08		2	WHITSETT BASE/0600	WHITSETT BASE/2100
REAF O-1053		10/04	CHRIS ENGELHARDT	1	WHITSETT BASE/0600	WHITSETT BASE/2100
8. Division/Group Communication Summary						
Function	Channel	RX Frequency N/W	RX Tone/NAC	TX Frequency N/W	TX Tone/NAC	Mode
COMMAND	1	170.0000	151.4	166.6750	151.4	
TACTICAL	11	168.3275	151.4	168.3275	151.4	A
AIR TO GROUND	13	172.3500		172.3500		A
AIR GUARD	16	168.6250		168.6250	110.9	A
9. Prepared By (Resource Unit Leader)		Approved By (Planning Section Chief)			Date	Time
JAY SHAFFER		CARRIE DENNETT			09/26/2020	2200

Division/Group Assignment List (ICS 204 WF)
Controlled Unclassified Information//Basic

1. Incident Name:				3.			
EAST CASTLE ZONE-SQF COMPLEX				Branch:		Division/Group:	
2. Operational Period: DAY/NIGHT				I		Y	
Date/Time From: 09/27/2020 0600 SUN		Date/Time To: 09/28/2020 0600 MON					
4. Operations Personnel							
OPERATIONS CHIEF		PAT RUSSELL (DAY) BRUCE CARLISLE (NIGHT)		DIVISION/GROUP SUPERVISOR		DANIEL VARNEY (530) 230-7247 MATTHEW HARDING (T)	
BRANCH DIRECTOR		MIKE KLIMEK		SAFETY		RONALD BERTSCH PAUL LEUSCH	
5. Resources Assigned this Period							
Strike Team / Task Force / Resource Designator		LWD	Leader	Number Persons	Drop Off PT./Time	Pick Up PT./Time	
REAF O-1023		10/02	KRYSTAL KISSINGER	1	WHITSETT BASE/0600	WHITSETT BASE/2100	
EMPF O-1007		10/02	DEAN CARPENTER	1	WHITSETT BASE/0600	WHITSETT BASE/2100	
EMTF O-935		09/28	TIM A HIGEONS	1	WHITSETT BASE/0600	WHITSETT BASE/2100	
6. Control Operations/Work Assignments:							
<p>Task: Construct line from Road 107 west to Slate Mountain. Support point protection as needed and requested. Purpose: Keep fire north of proposed indirect line. End State: Impacts to local communities, infrastructure, and natural resources minimized.</p>							
7. Special Instructions:							
<p>Castle Personnel to notify DIVS of potentially sensitive cultural materials. Identify and track suppression repair needs. Be prepared to provide needs to future Suppression Repair Group Supervisor. Backhaul excess equipment and supplies</p>							
8. Division/Group Communication Summary							
Function	Channel	RX Frequency N/W	RX Tone/NAC	TX Frequency N/W	TX Tone/NAC	Mode	
COMMAND	1	170.0000	151.4	166.6750	151.4		
TACTICAL	11	168.3275	151.4	168.3275	151.4	A	
AIR TO GROUND	13	172.3500		172.3500		A	
AIR GUARD	16	168.6250		168.6250	110.9	A	
9. Prepared By (Resource Unit Leader)			Approved By (Planning Section Chief)			Date	Time
JAY SHAFFER			CARRIE DENNETT			09/26/2020	2200

Division/Group Assignment List (ICS 204 WF)
Controlled Unclassified Information//Basic

1. Incident Name:			3.			
EAST CASTLE ZONE-SQF COMPLEX			Branch:		Division/Group:	
2. Operational Period: DAY/NIGHT			I		Z	
Date/Time From: 09/27/2020 0600	SUN	Date/Time To: 09/28/2020 0600				
4. Operations Personnel						
OPERATIONS CHIEF		PATRICK RUSSELL (DAY) BRUCE R CARLISLE (NIGHT)		DIVISION/GROUP SUPERVISOR		DAVID NEELS
BRANCH DIRECTOR		MIKE KLIMEK		SAFETY		RONALD E BERTSCH PAUL B LEUSCH
5. Resources Assigned this Period						
Strike Team / Task Force / Resource Designator		LWD	Leader	Number Persons	Drop Off PT./Time	Pick Up PT./Time
CASTLE TASK FORCE 1					WHITSETT BASE/0600	WHITSETT BASE/2100
TFLD O-946		09/27	RON SEYMOUR	1	WHITSETT BASE/0600	WHITSETT BASE/2100
-ENG3 SQF-325 E-472		10/07	WILLIAM EDWARD CHAPMAN	5	WHITSETT BASE/0600	WHITSETT BASE/2100
-ENG3 SAN JUAN COUNTY E31 E-365		09/30	AARION AUSTIN	3	WHITSETT BASE/0600	WHITSETT BASE/2100
-ENG4 PVT-DUKE CITY FIRE-401 E-367		09/30	MARCOS MONTOYA	3	WHITSETT BASE/0600	WHITSETT BASE/2100
-ENG6 INTERIOR-5-5 E-371		10/01	CHASE STRAND	3	WHITSETT BASE/0600	WHITSETT BASE/2100
-WTS2 SEQUOIA WT2 E-352		09/30	JAMIE AYALA	2	WHITSETT BASE/0600	WHITSETT BASE/2100
-WTS2 HART WTS2 E-351		09/27	JACOB TENNYSON	1	WHITSETT BASE/0600	WHITSETT BASE/2100
-WTS2 HART WTS2 T21 E-348		09/27	ROBERT MCCLEVE	1	WHITSETT BASE/0600	WHITSETT BASE/2100
CASTLE TASK FORCE 2					WHITSETT BASE/0600	WHITSETT BASE/2100
TFLD O-1027		10/02	DANE OSTLER (T)	1	WHITSETT BASE/0600	WHITSETT BASE/2100
-ENG6 JWF-E652 E-397		10/01	JAMES KERR	5	WHITSETT BASE/0600	WHITSETT BASE/2100
CASTLE TASK FORCE 3					WHITSETT BASE/0600	WHITSETT BASE/2100
TFLD O-975		09/29	MICHAEL J WEDELL	1	WHITSETT BASE/0600	WHITSETT BASE/2100
-ENG6 PVT-DOUBLE D E-313		09/29	MATTHEW DIMAS	3	WHITSETT BASE/0600	WHITSETT BASE/2100
-ENG6 PVT-ALLEN-E619 E-312		09/29	PETER ALLEN	3	WHITSETT BASE/0600	WHITSETT BASE/2100
-ENG6 PVT-FLAME CHASER E-133		10/07	EDWIN HALL	3	WHITSETT BASE/0600	WHITSETT BASE/2100
-ENG6 PVT-BUFFALO BIRD E-132		09/30	GREGG WEBSTER	3	WHITSETT BASE/0600	WHITSETT BASE/2100
8. Division/Group Communication Summary						
Function	Channel	RX Frequency N/W	RX Tone/NAC	TX Frequency N/W	TX Tone/NAC	Mode
COMMAND	1	170.0000	151.4	166.6750	151.4	A
TACTICAL	9	168.2500	151.4	168.2500	151.4	A
AIR TO GROUND	13	172.3500		172.3500		A
AIR GUARD	16	168.6250		168.6250	110.9	A
9. Prepared By (Resource Unit Leader)			Approved By (Planning Section Chief)		Date	Time
JAY SHAFFER			CARRIE DENNETT		09/26/2020	2200

Division/Group Assignment List (ICS 204 WF)
Controlled Unclassified Information//Basic

1. Incident Name:				3.		
EAST CASTLE ZONE-SQF COMPLEX				Branch:		Division/Group:
2. Operational Period: DAY/NIGHT				I		Z
Date/Time From: 09/27/2020 0600 SUN		Date/Time To: 09/28/2020 0600 MON				
4. Operations Personnel						
OPERATIONS CHIEF		PATRICK RUSSELL (DAY) BRUCE R CARLISLE (NIGHT)		DIVISION/GROUP SUPERVISOR		DAVID NEELS
BRANCH DIRECTOR		MIKE KLIMEK		SAFETY		RONALD E BERTSCH PAUL B LEUSCH
5. Resources Assigned this Period						
Strike Team / Task Force / Resource Designator		LWD	Leader	Number Persons	Drop Off PT./Time	Pick Up PT./Time
-WTT2 CENTRAL VALLEY FIRE LLC E-146		10/05	JEFF NEVINS	2	WHITSETT BASE/0600	WHITSETT BASE/2100
-WTS2 VALLEY FARM E-88		10/03	JEFF BATES	1	WHITSETT BASE/0600	WHITSETT BASE/2100
-EMPF O-1074		10/06	SILAS ANTON FISCHER	1	WHITSETT BASE/0600	WHITSETT BASE/2100
CASTLE TASK FORCE 4					WHITSETT BASE/0600	WHITSETT BASE/2100
TFLD(T) O-1199		10/08	ERIC MARK	1	WHITSETT BASE/0600	WHITSETT BASE/2100
-HC2 BLACK EAGLES - 5 C-120		10/09	REYES BEDOLLA	21	WHITSETT BASE/0600	WHITSETT BASE/2100
-HC2 PVT-TOM FERY FARM C-92		10/06	RYAN HOFFMAN-WENTLING	20	WHITSETT BASE/0600	WHITSETT BASE/2100
-FMOD O-1149		10/08	WILLIAM SWEPSTON	2	WHITSETT BASE/0600	WHITSETT BASE/2100
-FMOD O-1148		10/08	LANDIN HARPER	2	WHITSETT BASE/0600	WHITSETT BASE/2100
-FMOB O-1146		10/08	BRAVEHEART SAUCEDA	2	WHITSETT BASE/0600	WHITSETT BASE/2100
CASTLE TASK FORCE 5					WHITSETT BASE/0600	WHITSETT BASE/2100
TFLD E-399		10/01	ROB HEDLUND	1	WHITSETT BASE/0600	WHITSETT BASE/2100
-HC2I BLACK EAGLES - 2 C-117		10/09	ALCANTAR MAURICIO	22	WHITSETT BASE/0600	WHITSETT BASE/2100
-ENG6 BLM-E3143 E-395		10/01	CUAHUTEMOC BALTAZAR	4	WHITSETT BASE/0600	WHITSETT BASE/2100
-WTS2 PVT-HOMESTYLE E-462		10/06	RYAN DURAN	1	WHITSETT BASE/0600	WHITSETT BASE/2100
-EMPF O-1157		10/08	MICHAEL J COLEY	1	WHITSETT BASE/0600	WHITSETT BASE/2100
8. Division/Group Communication Summary						
Function	Channel	RX Frequency N/W	RX Tone/NAC	TX Frequency N/W	TX Tone/NAC	Mode
COMMAND	1	170.0000	151.4	166.6750	151.4	A
TACTICAL	9	168.2500	151.4	168.2500	151.4	A
AIR TO GROUND	13	172.3500		172.3500		A
AIR GUARD	16	168.6250		168.6250	110.9	A
9. Prepared By (Resource Unit Leader)			Approved By (Planning Section Chief)		Date	Time
JAY SHAFFER			CARRIE DENNETT		09/26/2020	2200

Division/Group Assignment List (ICS 204 WF)
Controlled Unclassified Information//Basic

1. Incident Name:		3.				
EAST CASTLE ZONE-SQF COMPLEX		Branch:		Division/Group:		
2. Operational Period:		DAY/NIGHT				
Date/Time From: 09/27/2020 0600 SUN		Date/Time To: 09/28/2020 0600 MON				
		I		Z		
4. Operations Personnel						
OPERATIONS CHIEF		PATRICK RUSSELL (DAY) BRUCE R CARLISLE (NIGHT)		DIVISION/GROUP SUPERVISOR		DAVID NEELS
BRANCH DIRECTOR		MIKE KLIMEK		SAFETY		RONALD E BERTSCH PAUL B LEUSCH
5. Resources Assigned this Period						
Strike Team / Task Force / Resource Designator		LWD	Leader	Number Persons	Drop Off PT./Time	Pick Up PT./Time
CASTLE TASK FORCE 6					WHITSETT BASE/0600	WHITSETT BASE/2100
TFLD O-1195		10/09	DUSTIN OSBORN	1	WHITSETT BASE/0600	WHITSETT BASE/2100
-DOZ2 PVT-MUTH EQUIPMENT E-5		10/05	JUSTIN TUFTS	1	WHITSETT BASE/0600	WHITSETT BASE/2100
-EXCA PVT-SHANNON BROTHERS E-179-		09/27	CHUCK SANDBORG	1	WHITSETT BASE/0600	WHITSETT BASE/2100
-GRD PVT-SHANE KIRKLAND CONSTRUCTION E-97		09/30	TODD ADAMS	2	WHITSETT BASE/0600	WHITSETT BASE/2100
-HC2 CREW MEXICO 5 C-10005		10/09	RANDY GARCIA	20	WHITSETT BASE/0600	WHITSETT BASE/2100
HC2 COBRAS - 6 C-121		10/09	WALTER ALLEN MEDINA	21	WHITSETT BASE/0600	WHITSETT BASE/2100
ENG3 STF-E342 E-402		10/03	JUSTIN FRANKLIN	4	WHITSETT BASE/0600	WHITSETT BASE/2100
ENG3 CND-BLM-E3130 E-399		10/01	JUAN NAJERA	6	WHITSETT BASE/0600	WHITSETT BASE/2100
ENG3 AZ-A3S-BRUSH 302 E-359		09/30	CHRIS ADER	3	WHITSETT BASE/0600	WHITSETT BASE/2100
ENG3 TRI CITY FIRE-E411 E-358		10/07	HOWELL CHRIS	4	WHITSETT BASE/0600	WHITSETT BASE/2100
ENG3 AVONDALE-BR171 E-357		10/08	BILL BROTT	4	WHITSETT BASE/0600	WHITSETT BASE/2100
ENG3 GREEN VALLEY E-356		10/07	SHANE MERRILL	4	WHITSETT BASE/0600	WHITSETT BASE/2100
ENG4 PVT-TROY FIRE SERVICE E-134		10/05	DAN HOKANSON	3	WHITSETT BASE/0600	WHITSETT BASE/2100
ENG6 NM-CIF-CIBOLA E-398		09/30	JACOB T RANDALL	4	WHITSETT BASE/0600	WHITSETT BASE/2100
ENG6 PVT-J3-15 E-364		09/28	JOHN PIETY	3	WHITSETT BASE/0600	WHITSETT BASE/2100
ENG6 PVT-THISTLE E-167		09/28	TIM ENGLAND	2	WHITSETT BASE/0600	WHITSETT BASE/2100
ENG6 PVT-R CONSTRUCTION E-166		09/28	RICHARD DEROCHE	3	WHITSETT BASE/0600	WHITSETT BASE/2100
ENG6 PVT-HIGH DESERT E-137		09/28	TOM HANKS	3	WHITSETT BASE/0600	WHITSETT BASE/2100
8. Division/Group Communication Summary						
Function	Channel	RX Frequency N/W	RX Tone/NAC	TX Frequency N/W	TX Tone/NAC	Mode
COMMAND	1	170.0000	151.4	166.6750	151.4	A
TACTICAL	9	168.2500	151.4	168.2500	151.4	A
AIR TO GROUND	13	172.3500		172.3500		A
AIR GUARD	16	168.6250		168.6250	110.9	A
9. Prepared By (Resource Unit Leader)		Approved By (Planning Section Chief)			Date	Time
JAY SHAFFER		CARRIE DENNETT			09/26/2020	2200

Division/Group Assignment List (ICS 204 WF)
Controlled Unclassified Information//Basic

1. Incident Name:				3.			
EAST CASTLE ZONE-SQF COMPLEX				Branch:		Division/Group:	
2. Operational Period: DAY/NIGHT				I		Z	
Date/Time From: 09/27/2020 0600 SUN		Date/Time To: 09/28/2020 0600 MON					
4. Operations Personnel							
OPERATIONS CHIEF		PATRICK RUSSELL (DAY) BRUCE R CARLISLE (NIGHT)		DIVISION/GROUP SUPERVISOR		DAVID NEELS	
BRANCH DIRECTOR		MIKE KLIMEK		SAFETY		RONALD E BERTSCH PAUL B LEUSCH	
5. Resources Assigned this Period							
Strike Team / Task Force / Resource Designator		LWD	Leader	Number Persons	Drop Off PT./Time	Pick Up PT./Time	
WTS2 ROCKY MOUNTAIN E-381		10/02	JAMES FOSTER	1	WHITSETT BASE/0600	WHITSETT BASE/2100	
WTS2 PVT-HUMPHRIES E-334		09/29	DANIEL FRENCH	1	WHITSETT BASE/0600	WHITSETT BASE/2100	
WTS2 PVT-49ERS E-50		09/27	STEVE SMITH	1	WHITSETT BASE/0600	WHITSETT BASE/2100	
DOZ2 PVT-SHANNON BROTHERS E-44		09/28	BILL SHANNON	1	WHITSETT BASE/0600	WHITSETT BASE/2100	
GRD PVT-SHANE KIRKLAND CONSTRUCTION E-97		09/30	TODD ADAMS	2	WHITSETT BASE/0600	WHITSETT BASE/2100	
SKG2 PVT-ALVORD-2 E-194		09/26	JOHN MOREY	2	WHITSETT BASE/0600	WHITSETT BASE/2100	
FMOD-AMERICAN CHAINSAW O-997		10/01		2	WHITSETT BASE/0600	WHITSETT BASE/2100	
FMOD PVT-KYLE/TROY O-996		10/02		2	WHITSETT BASE/0600	WHITSETT BASE/2100	
EMPF O-91		09/29	ROYCE COPEMAN	1	WHITSETT BASE/0600	WHITSETT BASE/2100	
REAF O-894		09/27	JARROD KELLOGG	1	WHITSETT BASE/0600	WHITSETT BASE/2100	
SOF1 O-934		09/28	DAVID R PROVENCIO	1	WHITSETT BASE/0600	WHITSETT BASE/2100	
6. Control Operations/Work Assignments:							
Task: Secure line from the Kern River Canyon to Needle Rock Road utilizing a combination of handcrews and heavy equipment.							
Purpose: Stop fire spread to the south.							
State: Threats to communities, recreation sites, and private land south of the fire are abated.							
7. Special Instructions:							
Castle Personnel to notify DIVS of potentially sensitive cultural materials. Identify and track suppression repair needs. Be prepared to provide needs to future Suppression Repair Group Supervisor. Backhaul excess equipment and supplies.							
8. Division/Group Communication Summary							
Function	Channel	RX Frequency N/W	RX Tone/NAC	TX Frequency N/W	TX Tone/NAC	Mode	
COMMAND	1	170.0000	151.4	166.6750	151.4	A	
TACTICAL	9	168.2500	151.4	168.2500	151.4	A	
AIR TO GROUND	13	172.3500		172.3500		A	
AIR GUARD	16	168.6250		168.6250	110.9	A	
9. Prepared By (Resource Unit Leader)			Approved By (Planning Section Chief)			Date	Time
JAY SHAFFER			CARRIE DENNETT			09/26/2020	2200

Division/Group Assignment List (ICS 204 WF)
Controlled Unclassified Information//Basic

1. Incident Name:		3.				
EAST CASTLE ZONE-SQF COMPLEX		Branch:		Division/Group:		
2. Operational Period:		III				
DAY/NIGHT		E				
Date/Time From:	Date/Time To:					
09/27/2020 0600 SUN	09/28/2020 0600 MON					
4. Operations Personnel						
OPERATIONS CHIEF	PATRICK RUSSELL (DAY) BRUCE R CARLISLE (NIGHT)	DIVISION/GROUP SUPERVISOR		BRIAN TAI, BRETT HILDBRAND		
BRANCH DIRECTOR		SAFETY		RONALD E BERTSCH PAUL B LEUSCH		
5. Resources Assigned this Period						
Strike Team / Task Force / Resource Designator	LWD	Leader	Number Persons	Drop Off PT./Time	Pick Up PT./Time	
6. Control Operations/Work Assignments:						
Task: Access fire edge. Purpose: Determine the need to insert resources and construct direct line. End State: Fire edge is secured while minimizing exposure to fire fighters.						
7. Special Instructions:						
Castle Personnel to notify DIVS of potentially sensitive cultural materials. Identify and track suppression repair needs. Be prepared to provide needs to future Suppression Repair Group Supervisor. Backhaul excess equipment and supplies. DIVS report directly to OSC1						
8. Division/Group Communication Summary						
Function	Channel	RX Frequency N/W	RX Tone/NAC	TX Frequency N/W	TX Tone/NAC	Mode
COMMAND	3	172.5500	151.4	162.1875	151.4	A
TACTICAL	5	168.0500	151.4	168.0500	151.4	A
AIR TO GROUND	13	172.3500		172.3500		A
AIR GUARD	16	168.6250		168.6250	110.9	A
9. Prepared By (Resource Unit Leader)		Approved By (Planning Section Chief)		Date	Time	
JAY SHAFFER		CARRIE DENNETT		09/26/2020	2200	

Division/Group Assignment List (ICS 204 WF)
Controlled Unclassified Information//Basic

1. Incident Name:			3.			
EAST CASTLE ZONE-SQF COMPLEX			Branch:		Division/Group:	
2. Operational Period: DAY/NIGHT			NIGHT		Y / Z	
Date/Time From: 09/27/2020 0600	SUN	Date/Time To: 09/28/2020 0600				
4. Operations Personnel						
OPERATIONS CHIEF		PAT RUSSELL (DAY) BRUCE CARLISLE (NIGHT)		DIVISION/GROUP SUPERVISOR		BRET DAVIDSON JOHN LANGE (T)
BRANCH DIRECTOR				SAFETY		RON BERTSCH PAUL LEUSCH
5. Resources Assigned this Period						
Strike Team / Task Force / Resource Designator	LWD	Leader	Number Persons	Drop Off PT./Time	Pick Up PT./Time	
HC2I SQF-SCORPIONS-6 C-109	09/29	GUSTAVO CERVANTES	20	WHITSETT BASE/1800	WHITTSETT BASE/0600	
ENG6 PVT-KL FARMS E-314	10/08	BRYSON KANADY	3	WHITSETT BASE/1800	WHITTSETT BASE/0600	
ENG6 PVT-TRUCK-18 E-315	10/09	PHILIP HOAG	3	WHITSETT BASE/1800	WHITTSETT BASE/0600	
ENG6 PVT-PEANUT PIE E-78	09/27	WAYDE VISSER	3	WHITSETT BASE/1800	WHITTSETT BASE/0600	
ENG6 TIA-TULE RIVER E-72	10/07	WILLIAM MCDARMENT	4	WHITSETT BASE/1800	WHITTSETT BASE/0600	
ENG6 PVT-CAHOON E-64	09/27	BLANE FIFIELD	3	WHITSETT BASE/1800	WHITTSETT BASE/0600	
ENG3 SQF-E323 E-442	10/02	JESUS SANCHEZ	5	WHITSETT BASE/1800	WHITTSETT BASE/0600	
ENG3 CO-CDFS-GREATER EAGLE E-246	10/04	PHILLIP MARSTON	5	WHITSETT BASE/1800	WHITTSETT BASE/0600	
WTT1 KRN-MURILLO E-285	09/27	JOHN DAVIES	1	WHITSETT BASE/1800	WHITTSETT BASE/0600	
WTT1 OES-WT42 E-283	10/02	JARED MCELHANNON	2	WHITSETT BASE/1800	WHITTSETT BASE/0600	
WTT1 OES-WT139 E-282	10/02	DAN DE YOUNG	2	WHITSETT BASE/1800	WHITTSETT BASE/0600	
SKG1 PVT-BIGFOOT (24HRS) E-353	09/28	KURT SPENCER	1	WHITSETT BASE/1800	WHITTSETT BASE/0600	
TFLD O-955	09/28	RYAN LEWIS	1	WHITSETT BASE/1800	WHITTSETT BASE/0600	
SOF2 O-918	09/28	JEFFREY M PILOTTO	1	WHITSETT BASE/1800	WHITTSETT BASE/0600	
6. Control Operations/Work Assignments:						
<p>Task: Patrol and monitor from Ponderosa through Peppermint Ranch. Support the defense of Ponderosa and Peppermint Ranch as requested. Mop up as appropriate based on firefighter safety.</p> <p>Purpose: Limit additional fire spread towards values at risk.</p> <p>End State: Fire spread limited to existing perimeter.</p>						
8. Division/Group Communication Summary						
Function	Channel	RX Frequency N/W	RX Tone/NAC	TX Frequency N/W	TX Tone/NAC	Mode
COMMAND	1	170.0000	151.4	166.6750	151.4	A
TACTICAL	9	168.2500	151.4	168.2500	151.4	A
AIR TO GROUND	13	172.3500	151.4	172.3500	151.4	A
AIR GUARD	14	169.1500	151.4	169.1500	151.4	A
9. Prepared By (Resource Unit Leader)			Approved By (Planning Section Chief)		Date	Time
JAY SHAFFER			CARRIE DENNETT		09/26/2020	2200

Division/Group Assignment List (ICS 204 WF)
 Controlled Unclassified Information//Basic

1. Incident Name:		3.	
EAST CASTLE ZONE-SQF COMPLEX		Branch:	Division/Group:
2. Operational Period: DAY/NIGHT		NIGHT	Y / Z
Date/Time From: 09/27/2020 0600 SUN	Date/Time To: 09/28/2020 0600 MON		
4. Operations Personnel			
OPERATIONS CHIEF	PAT RUSSELL (DAY) BRUCE CARLISLE (NIGHT)	DIVISION/GROUP SUPERVISOR	BRET DAVIDSON JOHN LANGE (T)
BRANCH DIRECTOR		SAFETY	RON BERTSCH PAUL LEUSCH

7. Special Instructions:

Castle Personnel to notify DIVS of potentially sensitive cultural materials. Identify and track suppression repair needs. Be prepared to provide needs to future Suppression Repair Group Supervisor. Backhaul excess equipment and supplies.

8. Division/Group Communication Summary						
Function	Channel	RX Frequency N/W	RX Tone/NAC	TX Frequency N/W	TX Tone/NAC	Mode
COMMAND	1	170.0000	151.4	166.6750	151.4	A
TACTICAL	9	168.2500	151.4	168.2500	151.4	A
AIR TO GROUND	13	172.3500	151.4	172.3500	151.4	A
AIR GUARD	14	169.1500	151.4	169.1500	151.4	A

9. Prepared By (Resource Unit Leader)	Approved By (Planning Section Chief)	Date	Time
JAY SHAFFER	CARRIE DENNETT	09/26/2020	2200

AIR OPERATIONS SUMMARY ICS-220										Time Prepared		Date Prepared		Prepared By			
Incident Name / Number				Sunrise		Startup		Cutoff		Sunset		Saturday, September 26, 2020		Operational Period - Date		Operational Period - Time	
WEST CASTLE ZONE SQF COMPLEX / CA-SQF-002541				6:48		7:18		18:14		18:44		1400		Shutdown		0700-2100	
General Remarks, Safety Notes, Hazards, Air Operations Special Equipment, etc. TRACK ALL DIPSITE LOCATIONS / NUMBER OF DIPS / GALLONS TAKEN. TRACK ALL DROP LOCATIONS / NUMBER OF DROPS / GALLONS DROPPED ALL GPS DATA TO BE COLLECTED IN DEGREES, MINUTES, DECIMAL MINUTES, FORMAT. AVOID Aerial Application of Retardant / Foam / Agent within 300' of Waterways, Bodies of Water, etc. If Retardant / Foam / Agent is Dropped Within These Areas Immediately Notify the AOB and Provide the Following Information: Lat / Long, Estimated Number of Gallons and a Map Detailing The Area.										Helibase Information Name Gill HB Latitude 36° 17.39 Longitude 119° 04.31 Name PTV HB Latitude 3° 61.26' Longitude 1° 19.48' (Use page 2 if needed)		TFR Information Request # A-436 Polygon: NM Altitude: 16,000 MSL Centerpoint: 1182° 09.60' Lat 0/2356 NOTAMS: Frequency 123.7250 http://tfr.faa.gov/tfr2/list.html		Rescue Ship Information Day Holist Name C-407 Phone (657)464-7830 Make/Model UH-1H Location Visalia Airport Request Procedure for These Airtaxi: Visalia Airport Incident Communications See Medical Plan For Additional Info			
Frequencies	TX	Tone	RX	Tone	AM / FM	Position	Name	Phone	Phone	Trainee	Phone	Remarks					
COMMAND CASTLE WEST	159.3000N	151.4000	151.3550N	103.5000	FM	AOBD	B. Kremensky	(619) 592-9122									
AIR GROUND CMD	169.1500		169.1500		FM	AOBD	T. Harris (EAST)	(949) 573-0986									
A/G - TACTICAL (WEST)	168.1625		168.1625		FM	ASGS											
AA ROTARY (WEST)	124.4250		124.4250		AM	ASGS	K. McElfish (EAST)	(909) 907-2677									
A/G - TACTICAL (EAST)	172.3500		172.3500		FM	ASGS	D. Sepulveda (EAST)	(909) 374-8944									
A/A ROTARY (EAST)	123.7250		123.7250		AM	HEMB	C. Bradley (PTV)	(949) 591-4131									
AIR TACTICS	165.9875		165.9875		FM	HEBM	R. Johnson (GILL)	(530) 340-3099									
A/A Briefing	132.2750		132.2750		AM	HLCO	T. Shiffer (WEST)	(650) 245-1745									
TOLC (GILL)	123.0250		123.0250		AM	HLCO	T. Will	(949) 591-4131									
DECK (PTV)	163.1000		163.1000		FM	HLCO	T. Alexander	(951) 575-5513									
DECK (GILL)	168.3500	151.4	168.3500	151.4	FM	ATGS	K. Crow	(559) 784-0828									
CALCORD - MEDICAL	156.0750	156.7 (6)	156.0750	156.7 (6)	FM	ATGS	C. Blackmon	(559) 784-0828									
AIRGUARD - Emergency Only	168.6250	110.9 (1)	168.6250		FM												
HELICOPTERS (Use page 2 if Needed)																	
FAA #	Type	Make/Model	Helibase	Avail	Start	Remarks	FAA #	Type	Make/Model	Helibase	Avail	Start	Remarks				
4A1	I	CH-47	Gill	0800	0830	Tank (WEST)	948CH	I	CH-47D	PTV	0800	0830	Bucket (East)				
G856	I	UH-60	Gill	0900	0930	Bucket (WEST)	245CH	I	BV-234	PTV	0800	0830	Bucket (East)				
G857	I	UH-60	Gill	0900	0930	Bucket (WEST)	135BH	I	S-70	PTV	0800	0830	Bucket (East)				
G854	I	UH-60	Gill	0900	0930	Bucket (WEST)	699RH	I	KMAX	PTV	0800	0830	Bucket (East)				
G855	I	UH-60	Gill	0900	0930	Bucket (WEST)	H-522	II	205 A1++	PTV	0800	0830	Bucket (East)				
G880	I	UH-60	Gill	0900	0930	Bucket (WEST)	H-523	II	205 A1++	PTV	0800	0830	Bucket (East)				
							H-536	III	Bell 407	PTV	0800	0830	Bucket (East)				
DFG	II	UH-1H	Gill	0800	0830	Bucket Limited (WEST)	839PA	III	AS-300B3	PTV	0800	0830	H.LCO (East)				
2AH	II	Bell 212	Gill	0800	0830	Bucket (WEST)											
2FA	II	Bell 212	Gill	0800	0830	Bucket (WEST)											
3SH	III	206L3	Gill	0800	0830	H.LCO/RECON (WEST)											
7AC	III	Bell 407	Gill	0800	0830	H.LCO/RECON (WEST)											
2EA	III	206B3	Gill	0800	0830	H.LCO/RECON (WEST)											
FIXED WING (Use Page 2 if Needed)																	

MEDICAL PLAN (ICS 206)

1. Incident Name: WEST CASTLE ZONE SQF COMPLEX	2. Operational Period: Date From: 9/27/20 Date To: 9/28/20 Time From: 0700 Time To: 0700
---	--

3. Medical Aid Stations:			
Name	Location	Contact Number/Freq	Physician
MERT	Porterville ICP	West Castle Communications	Yes
CAL-MAT	Porterville ICP	West Castle Communications	Yes

4. Transportation (indicate air or ground):			
Ambulance Service	Location	Contact Number	Level of Service
Castle 5 (ground)	H12	West Castle Communications	ALS
Castle 6 (ground)	Porterville ICP	West Castle Communications	ALS
AAV 771 (ground)	Ranch Helispot	West Castle Communications	ALS
Kern Valley FD H407 (air) 24/7 hoist	Visalia	West Castle Communications	ALS
Skylife (air) 24/7	Visalia	West Castle Communications	ALS

5. Hospitals:							
Hospital Name	Address,	Contact Number(s)/ Frequency	Travel Time		Trauma Center	Burn Center	Helipad
	Lat & Long Helipad		Air	Ground			
Kaweah Delta Hospital	400 W. Mineral King ave Visalia, CA 36 19.65°N 119 17.676°W	(559) 624-2000	15	40	Level 2	<input type="checkbox"/>	<input checked="" type="checkbox"/>
Community Regional Medical Center	2823 Fresno st. Fresno, CA 36 44.568°N 119 47.094°W	(559) 459-4220	20	60	Level 1	<input checked="" type="checkbox"/>	<input checked="" type="checkbox"/>
Sierra View Medical Center	465 W. Putnam ave Porterville, CA	(559) 784-1110		15	EDAT	<input type="checkbox"/>	<input type="checkbox"/>

6. Special Medical Emergency Procedures	
<p>Line Emergency Crew Supervisor will contact Division Supervisor with patient complaint/condition and location.</p> <p>- Division Group Supervisor Contacts:</p> <ol style="list-style-type: none"> 1. Closest EMS resource 2. Communications Unit <p>- Communications Unit Contacts:</p> <ol style="list-style-type: none"> 1. Ground or Air ambulance as requested. 2. Operations 3. Safety 4. Medical Unit <p>- Division Supervisor or designee will serve as point of contact and run medical emergency on assigned channel.</p> <ol style="list-style-type: none"> 1. A pre-assigned tactical frequency (i.e. CALCORD) should be used for IWI and only for duration of the emergency. <p>- Communications Unit will clear the Command channel for emergency traffic as needed for duration of the need. Direct all medical issues to the MERT.</p> <p>Camp Emergency Contact West Castle Communications (618) 818-8437 (619) 322-8841</p> <p>- Medical Unit contacts</p> <ol style="list-style-type: none"> 1. Communications 2. Safety 3. Logistics 4. Operations 5. Crew Supervisor 6. Comp/Claims 	<p>Injury Reporting Procedures</p> <p>Nature of Injury: _____</p> <p>Location of Patient: _____</p> <p>Point of Contact: _____</p> <p>Transportation Requested by: Air ___ Ground ___</p> <p>Point of Pick-Up: _____</p> <p>Lat: _____ Long: _____</p> <p>Patient Unit ID: _____</p> <p>Is an EMT with Patient: Yes ___ No ___</p> <p>Age: _____ Sex: Male ___ Female ___</p> <p>All Emergencies - Secure the area and identified witnesses for later investigation. Keep accurate log of events.</p>

Check box if aviation assets are utilized for rescue. If assets are used, coordinate with Air Operations.

7. Prepared by (Medical Unit Leader): M. Hnat J. Davis (T) **Signature:**

8. Approved by (Safety Officer): J. Buchmeier J. Novak (T) **Signature:**

ICS 206 NIMS IAP Date/Time: 9/26/20 1400

ICS 205 - INCIDENT RADIO COMMUNICATIONS PLAN

CONTROLLED UNCLASSIFIED
INFORMATION//BASIC

1. Incident Name: WEST CASTLE ZONE SQF COMPLEX WEST CASTLE ZONE	2. Date/Time Prepared Date: 09/26/2020 Time: 1600	3. Operational Period: Date From: 09/27/20 Time From: 0700 Date To: 09/28/20 Time To: 0700
--	--	---

4. Communications									
Ch#	Function	Name	Assigned To	Rx Freq	Rx Tone	Tx Freq	Tx Tone	Notes	
1	COMMAND	CDF C1	WEST CASTLE ZONE	151.3550N	103.5 (T8)	159.3000N	151.4 (T14)	BLUE RIDGE	
2	COMMAND	CDF C11	WEST CASTLE ZONE	151.1675N	103.5 (T8)	159.3975N	151.4 (T14)	CASE MTN (NORTH)	
3	COMMAND	NIFC C34	WEST CASTLE ZONE	173.8250N	103.5 (T8)	165.3625N	103.5 (T8)	JORDAN PEAK-WEST CASTLE ZONE COMMAND	
4	COMMAND	NIFC C4	EAST CASTLE ZONE	170.0000N	151.4 (T14)	166.6750N	151.4 (T14)	JORDAN PEAK-EAST CASTLE ZONE COMMAND	
5	TACTICAL	NIFC T3	DIV B	168.6000N	151.4 (T14)	168.6000N	151.4 (T14)	EAST CASTLE ZONE	
6	TACTICAL	R5 T5	DIV DD	167.1125N	151.4 (T14)	167.1125N	151.4 (T14)	BRANCH 21	
7	TACTICAL	CDF T25	DIV MM & MTN, HOME FSR	159.2775N	192.8 (T16)	159.2775N	192.8 (T16)	BRANCH 21	
8	TACTICAL	CDF T26	DIV PP	159.2925N	192.8 (T16)	159.2925N	192.8 (T16)	BRANCH 25	
9	TACTICAL	CDF T28	DIV TT	151.1825N	192.8 (T16)	151.1825N	192.8 (T16)	BRANCH 25	
10	TACTICAL	CDF T29	DIV WW	151.3475N	192.8 (T16)	151.3475N	192.8 (T16)	BRANCH 29	
11	TACTICAL	CDF T30	DIV YY	151.3925N	192.8 (T16)	151.3925N	192.8 (T16)	BRANCH 29	
12	TACTICAL	VTAC14	OPS BRIEFING	159.4725N	156.7 (T6)	159.4725N	156.7 (T6)	RADIO BRIEFING CHANNEL	
13	A/G TAC	A/G TAC W	WEST CASTLE ZONE	168.1625N		168.1625N			
14	A/G CMD	A/G CMD	ALL ZONES	169.1500N		169.1500N		OVERHEAD USE ONLY	
15	MEDICAL	CALCORD	ALL ZONES	156.0750N	156.7 (T6)	156.0750N	156.7 (T6)	EMERGENCY COORDINATION	
16	EMERGENCY	GUARD 25	ALL ZONES	168.6250N		168.6250N	110.9 (T1)		
17									
18									
19									
20	AIRGUARD	GUARD 25	ALL ZONES	168.6250N		168.6250N	110.9 (T1)		

5. Special Instructions

TO CONFIRM YOU HAVE THE MOST CURRENT CLONE, ENSURE YOUR DISPLAY OF CHANNEL 16 OR 20 MATCHES CHANNEL 16 OR 20 OF THE 205 - HEIGHT AND POWER ARE KEY WHEN USING RADIOS; BE AT A HIGH POINT, USE A MOBILE IF POSSIBLE, AND USE RADIO RELAYS WHEN NEEDED

6. Prepared by (Communications Unit Leader): Name: C. Johns	Signature:
ICS 205 - CONTROLLED UNCLASSIFIED INFORMATION//BASIC	NIMS IAP Date/Time: 09/26/20 1600

STATE OF CALIFORNIA
DEPARTMENT OF FORESTRY AND FIRE PROTECTION
PROPERTY CERTIFICATION OF LOCATION OR DAMAGE
CERTIFICATE OF RESPONSIBILITY FOR INCIDENT OCCURRENCE
CAL FIRE-101 page 1 of 2 (1/07)

Incident #:
Request #:

DOC. NUMBER:

LOCATION / INCIDENT NAME:	INCIDENT NUMBER:	UNIT:	REGION:	DATE:
THE FOLLOWING ARTICLES WERE: (broken, left on line, damaged, or other)				DATE OF OCCURRENCE:

QUANTITY	UNIT OF MEAS.	CAL FIRE STOCK NUMBER (COMPLETE WHENEVER ASSIGNED)	DESCRIPTION (INDICATE SIZE, MAKE, MODEL, TYPE, ETC., TO CLEARLY DESCRIBE THE ITEM, PROVIDE ADEQUATE DATA TO EFFECTIVELY IDENTIFY EQUIPMENT OR PROPERTY.)	PROPERTY NUMBER

DIV: _____ **DIV's Name:** _____

DIV. Signature: _____

LOCATION OF ITEMS: _____

REMARKS: _____

SIGNATURE OF PERSON CERTIFYING OCCURRENCE AS DESCRIBED			
SIGNATURE:	PRINTED NAME:	TITLE:	DATE:

UNIT SUPERVISOR'S APPROVAL

COMMENTS:

SIGNATURE OF UNIT ADMINISTRATOR:	TITLE:	DATE:
----------------------------------	--------	-------

Training Message

Trainers

- Sign off PTB upon completion of each task
- Complete the PTB Evaluation Record prior to Demob
- Complete an ICS 225 (Personal Performance Record)
- Complete the Final Evaluator's Verification page in the PRB if you are recommending them for qualification

Trainees

- Secure your PTB
- Ensure you have the above-mentioned documents completed and signed by your Trainer prior to Demob
- You do not have to wait for your assigned Demob time to close out with the Training Specialist

Don't train until you get it right, train until you cannot get it wrong!

**Any questions please contact the
Training Specialist:
Shane Vargas (530)410-4225**



CAL FIRE INCIDENT MANAGEMENT TEAM 6

Jeff Veik- INCIDENT COMMANDER



West Castle Zone SQF Complex CA-SQF-002541

DEMOBILIZATION PLAN - SUMMARY

GENERAL INFORMATION

The Demobilization Plan is developed to facilitate the orderly removal and checkout of resources on the incident. Surplus Personnel are available for release if they have rested for a minimum of 8 hours, are cleaned up, outfitted and have a vehicle ready to depart to their next destination.

GENERAL GUIDELINES

- **NO RESOURCES WILL LEAVE THE INCIDENT UNTIL AUTHORIZED TO DO SO BY THE DEMOB UNIT.**
- Efforts will be made to ensure that all released personnel arrive at their destination prior to 2200 hours.
- All Resources will arrive at the Demobilizations Unit at their scheduled time Only.
- All government and hired vehicles leaving the incident will have a safety inspection. If a vehicle is within 1,000 miles of a "B" service, it is recommended of the resource to contact Ground Support and have an oil change 24 hours prior to their scheduled demobilization time.
- **All Rental Vehicles will receive a safety inspection prior to leaving the incident.**
- All trainees are to keep their time up to date and report to the Training Specialist with their task books and evaluations prior to completion of the demobilization process.
- All strike team leaders are responsible to call **South Ops at 1-800-237-3703** immediately upon being released from the incident

RESPONSIBILITIES

Unit Leaders will declare resources excess to their **Section Chief**. **Section Chiefs** will declare excess resources to the Planning Section Chief through the **Resource Unit Leader**. This should be done 36 hours in advance of anticipated release. **Use the Declaration of Excess Resources sheet or General Message Form (ICS-213) to list all excess resources.** Include the resource name, request number, name of person, date and time of declared excess, and time in which the resource will be eligible to leave. Send to the **RESOURCE UNIT** where the resource will be determined to be surplus to the incident. Surplus resources will then be able to report to the **DEMOB UNIT**, receive a Demobilization Checkout Form (ICS 221), get the appropriate ICS 221 signatures, and then return the completed ICS 221 to the DEMOB UNIT prior to final release or reassignment. Resources are not to contact **South Ops** or the expanded dispatch center unless instructed to do so by the Demobilization Unit.

RELEASE PRIORITIES

1. Organized fire departments
2. OES engines
3. Hired personnel and equipment
4. Other agencies (USFS, BLM, etc.)
5. Out of region CAL FIRE forces
6. Within Region CAL FIRE Forces
7. Unit CAL FIRE Forces

TRAVEL INFORMATION

All resources will meet agency specific requirements on hours of travel per day. For CAL FIRE hand crews, a full 24 hour reset period shall be adhered to before departing from the incident. After a crew's last operational period they shall begin the demobilization release procedure during their 24-hour off shift. In addition, they must use the following complete 24-hour period as reset time before they depart from the incident.

Finance Message

NO Off-Site Feeding

All feeding is provided by the Food Unit at the Incident Base

COMP/CLAIMS

Vehicle/Equipment Damage: Report details to Comp/Claims and have Ground Support evaluate (State vehicles will need Std. 270/274 forms)

Injuries: Submit documentation to Comp/Claims; CAL Fire supervisors complete electronic IAPS

Property Damage: Please report details (including address, Lat/Long location) to Comp/Claims

Water Logs: Please complete and submit to Comp/Claims daily

CAL FIRE TIME Process

Shift Tickets: Line supervisors complete for Hired Equipment and submit hard copy to TIME

Local Government: Check-in with OES

CAL FIRE resources: Complete eFC-33 input sheet and provide activity updates to TIME

**Please be COVID cognizant and send only 1 representative to submit documentation

FEDERAL TIME Process

Federal resources: Please submit your CTR or Shift Ticket daily. You can submit your time using one of the following methods:

1. Fillable PDF CTR/Shift Tickets: QR code to the fillable forms are included below.
2. Hard copy CTR/Shift Tickets: Complete a hard copy, take a photo and email/text that information to Finance: 2020.Castle.finance@firenet.gov or (949) 591-4123.
3. Submit the hard copy as usual to Whitsett Spike Camp or Troy Meadow
4. A justification in remarks is required for federal employees claiming hazard pay or environmental on CTRs.
5. Be sure to call Finance 1 day prior to your scheduled DMOB to ensure time is complete at (949) 591-4123

Federal Forms:



eFC-33 INITIAL INPUT FORM

1 2 3 4 5 6 7

Overhead: Complete one form per person.
All Others: Complete one form per vehicle.

Request Number
O - 1234

INCIDENT State Agency Incident Number Incident Name Incident Index Code Incident PCA Code
CA CA Detwiler 4200 2350


RESOURCE Strike Team Resource ID - Fire Assignment Home Station / Office Location
S T 9 3 2 5 C E-3499 Mariposa

YOUR NORMAL DUTY SCHEDULE 24 Hr. 8-8 24 Hr. 7-7 Other
Portal to Portal? YOUR AGENCY CAL FIRE HOME UNIT S L U COMMIT RELEASE Date Time YOUR CELL PHONE #

PERSONNEL	Schedule		First Name	Rank or Classification	# OF Regular Duty Scheduled Hours per Day										
	A	B Other			Sun	Mon	Tue	Wed	Thu	Fri	Sat				
EMPLOYEE 1															
EMPLOYEE 2															
EMPLOYEE 3															
EMPLOYEE 4															
EMPLOYEE 5															
EMPLOYEE 6	<input checked="" type="checkbox"/>	One Box	Scheurich	David	BC										

VEHICLE	Schedule		Radio ID	Kind of Vehicle	ID No. x No.
	A	B Other If Other, explain			
VEHICLE 1					
VEHICLE 2					
	<input checked="" type="checkbox"/>	One Box	E-4271	FTH	0 2 x 1 2 3
Chainsaw Quantity: Y / N					
Dozers and Transports go on a single form. All others, use one form per individual vehicle.					

ADDITIONAL INFORMATION BELOW



SHIFT TICKET EXAMPLE

EMERGENCY SHIFT TICKET and EVALUATION FORM					Contractor Name	
Incident or Project Name CASTLE		Incident Number CASQF 002541	Request Number E#		Contractor Name DOZER DUDE	
Agreement Number XXX - 000000 - 00					Operator #1 BOB SMITH	
Equipment Make CAT					Operator #2 TOM SMITH	
Equipment Model / Type D6XM					Operator Furnished By: <input checked="" type="checkbox"/> Contractor <input type="checkbox"/> Government	
Serial Number 111111					Operating Supplies Furnished By: <input checked="" type="checkbox"/> Contractor <input type="checkbox"/> Government	
Licence Number 111111					Equipment Status <input checked="" type="checkbox"/> Inspected <input checked="" type="checkbox"/> Under Agreement	
Equipment Use (Circle) Hours Days / Miles					Released by Government <input type="checkbox"/> Withdrawn by Contractor <input type="checkbox"/>	
Date Mo / Day	Start	Stop	Work	Assignment		
9/15	0700	2400	17	DIV M		
9/16	0001	0700	7	DIV M		
					Remarks/Comments ** NO DAMAGE/ NO CLAIMS	
Vendor Rating					Govt. Rep. Name and Position - PRINT Mike Weber	
Poor* Avg. Good Exc. N/A					Govt. Rep. Signature <i>Mike Weber</i>	
Met Performance Expectations					Contractor Signature <i>Bob Smith</i>	
Equipment in Safe Working Condition					Date 09/16/20	
Operator Skill Level					Time 0800	
Operates Safely					CALFIRE 297 (Rev 3-2011)	
Operator's Cooperation Level						
Overall Performance						
* NOTE: Any rating of POOR requires an explanation in Comment Section. **Final evaluation or for more documentation, use an ICS Form 230 or equivalent.						
Pink - Finance		Blue - Home Unit HE Coordinator		Yellow - Vendor		White - Govt Representative

EMERGENCY SHIFT TICKET and EVALUATION FORM					Contractor Name	
The responsible Government Officer will complete this form each shift					Contractor Name DUDE TRANSPORT	
Incident or Project Name CASTLE		Incident Number CASQF 002541	Request Number E # Here		Operator #1 BOB SMITH	
Agreement Number XXX - 000000 - 00					Operator #2 TOM SMITH	
Equipment Make TRANSPORT/ KENWORTH					Operator Furnished By: <input checked="" type="checkbox"/> Contractor <input type="checkbox"/> Government	
Equipment Model / Type COZAD TRAILER /26 WHEELS					Operating Supplies Furnished By: <input checked="" type="checkbox"/> Contractor <input type="checkbox"/> Government	
Serial Number 1XP3ESMP14239012					Equipment Status <input checked="" type="checkbox"/> Inspected <input checked="" type="checkbox"/> Under Agreement	
Licence Number 9999999					Released by Government <input type="checkbox"/> Withdrawn by Contractor <input type="checkbox"/>	
Equipment Use (Circle) Hours Days / Miles					Remarks/Comments ** NO DAMAGE/ NO CLAIMS	
Date Mo / Day	Start	Stop	Work	Assignment		
9/15	0700	2400	17	DIV M		
9/16	0001	0700	7	DIV M		
Vendor Rating					Govt. Rep. Name and Position - PRINT Mike Weber	
Poor* Avg. Good Exc. N/A					Govt. Rep. Signature <i>Mike Weber</i>	
Met Performance Expectations					Contractor Signature <i>Bob Smith</i>	
Equipment in Safe Working Condition					Date 09/16/20	
Operator Skill Level					Time 0800	
Operates Safely					CALFIRE 297 (Rev 3-2011)	
Operator's Cooperation Level						
Overall Performance						
* NOTE: Any rating of POOR requires an explanation in Comment Section. **Final evaluation or for more documentation, use an ICS Form 230 or equivalent.						
Pink - Finance		Blue - Home Unit HE Coordinator		Yellow - Vendor		White - Govt Representative

Turn shift tickets into Time Unit.

WATER USAGE REPORT

DATE: _____ WORK LOCATION: _____ REQUEST #: _____
 Example: 9/1/20 Example: DIV A Example: E-23

AGENCY or VENDOR NAME: _____ RESOURCE ID: _____
 Examples: CAL FIRE, AAA Water, etc. Examples: WT51, C309, etc.

DROP FORMS OFF AT COMP/CLAIMS DAILY

		WATER SOURCE LOCATION <small>Address, DP #, Lat-Long, etc.</small>	Hydrant	Open source i.e. pond, reservoir	Tank	Gallons Used For Fire Fighting	Gallons Used For Incident Support	Property Owner, Contact Info, Remarks, etc.
			Check One			Gallons Used		

Additional Information:

The intent of this document is to track, record and validate the amount of water used on an incident.
 It is not intended to review the performance of equipment using the water on an incident.



PUBLIC INFORMATION



Official Sources of Public Information

EAST CASTLE ZONE



Tulare County
Structure Status

East Zone Information Line: 559-697-5148
East Zone Email: sgfcomplex2020@gmail.com
Website: <https://inciweb.nwcg.gov/incident/7048/>
Facebook: [@SequoiaNF](#) [@inyonf](#) [@countyoftulare](#)
Twitter: [@sequoiaforest](#) [@lno NF](#)

WEST CASTLE ZONE



CAL FIRE EMAIL SIGN UP

West Zone Information Line: 916-618-3195
West Zone Media Line: 559-635-8206
West Zone Email Updates: <https://tinyurl.com/WestCastleFire>
Website: <https://www.fire.ca.gov/incidents>
Facebook: [@CALFIRE TUU](#)
Twitter: [@CALFIRE TUU](#)



Tulare County
Evacuation Map

STATUS

Incident Start Date: August 19, 2020	Incident Start Time: 8:30 AM
Acreage:	Containment:
Cause: Lightning	Total Personnel:

Media Law

The California State Penal Code Section 409.5(d) allows the news media to enter scenes of disaster, riot, or civil disturbance. Properly identified members of the news media should not be restricted from entering locations specified within the code. However, this does not include crime scenes, and does not imply that the news media may interfere with incident operations while they are in the areas of concern. If entering such a location that is hazardous, they should be advised; media access cannot be prevented for safety reasons unless their presence would impede CAL FIRE's mitigation of the incident or the disturbing of evidence. When working around the media, remember:

- Media **is not permitted** on private property without the property owner's permission.
- If approached and questioned by the media and or the public, talk about your assignment or task at hand. Remember to wear all the appropriate PPE.
- If needed call for an incident PIO through the chain of command.
- Never speculate, give opinions or speak for others.
- There is no such thing as an "off the record" comment.

CAL FIRE Social Media Policy (Social Media 0691)

Social Media is increasingly being used by public agencies, the media as well as the public. This form of communication continues to grow rapidly in order to supply the instant gratification needs of society. Therefore, when on a CAL FIRE incident, you will adhere to the CAL FIRE Social Media Policy, 0691. You can get further information about the CAL FIRE Social Media Policy from the incident Public Information Officer. While assigned to the incident, there will be no posting of:

- Inappropriate information or materials, no opinions, no endorsements, inappropriate pictures or videos

Lost and Found

The Information Section will manage Lost and Found items for the incident. If you have lost an item leave your contact information and what you have lost at the Information Section. If you have found an item on the incident bring the item to the Information Section with your contact information as well.

Incident Base Camp Mailing Address

c/o Public Information Office/Trailer
2700 Teapot Dome
Porterville, CA 93257



INCIDENT PEER SUPPORT:



Team members are available on the incident for any peer support related needs. The best way to get a hold of them is to call them directly or stop by the ESS Trailer

In addition, there is an onsite clinician available to meet on an individual and/or group basis

Jeremy Sanders 916-281-6472

Mike Deleo 916-661-0724

John Kiszka 530-598-2615

or

CAL FIRE 24 Hr. Peer Support/Helpline

916-445-4337

Below are other Team Members not on the incident who can also be contacted directly:

Tony Howard 916-224-1543

Chris Lomanto 916-247-6974

Mike Aiello 916-584-0548

Connie Quarisa 916-213-8697

Warren Parrish 916-823-6641

Noelle BahnMiller 916-661-0011

Nikole Schutz 916-709-0434

Krissy Shaefer 619-592-6337

Amber Henderson 805-794-1690

Shawna Powell 530-717-0667

Amy Head 916-956-3277

Watch for the signs and symptoms of stress in yourself and the people around you. Try and stay positive and get much needed rest when you can. We can do this, together!

A message to our firefighters from **ASHLEY IVERSON**.



Stay Healthy, Stay ⁴¹Alert and Stay Strong!

FIRE SUPPRESSION REPAIR PLAN: West CASTLE INCIDENT

Fire suppression repair is the repair of damage caused directly from fire suppression activities. It is not the repair of infrastructure or rehabilitation of burned areas that happened as a result of the fire itself.

Damaged facilities will be returned to functional status in order to prevent further damage. Projects too large or complex to be completed by the Fire Suppression Repair Group shall be transferred to the Comp/Claims Unit or the local Unit. Repair work shall only occur in locations authorized by the Operations Division and where fire suppression activities are complete. Fire Suppression Repair Group resources shall evaluate all Divisions for appropriate repair needs. This includes areas inside and outside the fire perimeter, provided the damage was caused by official fire suppression activities. Extra care will be exercised and equipment will be monitored when operating in locations where new fire starts are more likely to occur, such as rocky areas in dry grass. New fires will be reported following the instructions in the radio call plan.

Examples of items that may be repaired include, but are not limited to:

Infrastructure Damage	Natural Resource Damage
Fences and gates	Soil erosion
Culverts, bridges, and other watercourse crossings	Adverse impacts to air and water quality
Water sources	Adverse impacts to protected species of plants and animals
Utility distribution lines (above or below ground)	
Road barriers removed for fire access	
Trash, debris, and supplies left by fire suppression resources	
Miscellaneous damage to residential property	

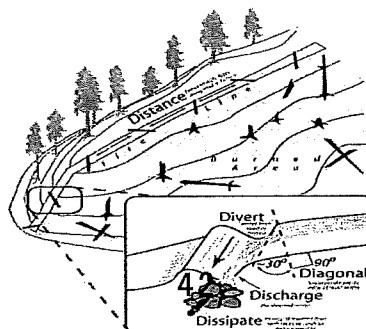
Dozer Line Repair

Dozers construct both fire and contingency lines. Dozer line width varies greatly. The following measures shall be implemented for constructed dozer line:

- Berms and push-piles may be spread out to the extent feasible. This may be accomplished by back-blading and/or using ripper shanks or grapples. Debris piled against trees or perched above watercourses is especially important to remove or disperse.
- Waterbreaks shall be constructed at a 30-45 degree angle and shall be a minimum depth of 12 inches from the bottom of the cut to the top of the berm. Where feasible, the discharge from waterbreaks shall be directed into vegetated or rocky areas.
- Where slopes exceed the range at which a tractor can effectively work, waterbreaks shall be constructed with hand tools.
- Roads used in fire suppression activities shall be left in the same condition they were found or better. Gravel and soil-surfaced roads shall be watered to prevent excessive dust. Where fire suppression activities have damaged or rendered road drainage facilities non-functional, waterbreaks or drivable dips shall be installed for drainage.
- Where fire suppression activities have filled in or damaged inside ditches, the ditches shall be cleaned and left unobstructed.
- Spacing of waterbreaks shall be as follows:

Prevailing gradient	Maximum waterbreak spacing
0-10%	200 feet
11-25%	150 feet
26-50%	100 feet
>50%	75 feet

Spacing criteria is a general guide. Actual location of waterbreaks should be tailored to the topography and placement suited to the best dispersal of water flow.



Federal Interagency Suppression Repair Guidelines

Fire Line

- Restore natural contour.
- Prevent erosion by constructing waterbars, pulling back vegetation with excavator, straw bale etc.
- De-compact fire line and pull vegetation back in with excavator.
- Attempt to conceal or hide the entrance and exit using the landscape and available materials.
- To prevent access to off highway vehicles (OHV) where fire lines intersect roads or trails block these intersections with large rocks, large trees, or walls of brush.
- Concentrations of slash along commonly used areas such as roadways, developed recreation areas, and structures should be chipped and spread across the landscape.

Heli-spots, Drop Zones, Sling & Medi-vac Sites

- Use standards similar to fire line repair to repair these fire suppression activity areas. If available, use cleared vegetative material for soil cover. Place waterbars where appropriate.

Line in or through Watercourses

- Restore preexisting streamflow and remove any deposited debris that was not present before suppression efforts.

Water Drafting Sites

- Restore water sources used or developed as draft sites to original condition. Remove any dams, dikes, or other impoundments created for fire suppression activities. Backhaul any trash.

Concentrations of Slash

- Concentrations of slash created by fire suppression activities along commonly used areas such as roadways, developed recreation areas, and structures should be chipped and spread across the landscape. Chip piles should not exceed six inches in depth. Lop and scatter concentrations of slash not to exceed 18 inches in height.

Roads

- Road repair should follow the existing design of the road prism. Repair damage to pavement, gates, cattle guards, and culverts. Remove soil pushed into cattle guards.
- Remove all slash and debris created by fire suppression from culvert inlets and outlets.

- Clean and grade ditch lines, rolling dips, and lead off ditches to repair function.
- Physically close off all unauthorized routes/roads opened for suppression activities. Place rocks or logs to disguise the entrance to prevent unauthorized OHV.

Litter, Trash, and Flagging Removal

- Remove all litter, trash, and flagging from all suppression activity areas; this includes micro-trash.

Wilderness and Wilderness Study Area Guidelines

- Areas of fire suppression in wilderness will follow many of the *General Repair Guidelines* previously discussed, but with an emphasis on restoring wilderness aesthetics and characteristics. One way to think of this is to “make it look like we were never there.” The use of mechanized equipment may require special authorizations to repair the area. Verify with the appropriate land manager before use of equipment in wilderness or WSA’s.

Tree Disposal from Dozer-lines and Roadside Hazard Mitigation

- Reduce fuel loadings along access roads accessible dozer-lines and cleared areas following suppression activities.
- Fallen trees will be yarded and decked.
- Do not stockpile fuels against standing live or dead trees.
- Locate decks in disturbed areas where trees can be safely processed.
- Use low impact machinery on improved surfaces.
- Locations for roadside hazard tree and fire line tree disposal will be determined by assigned Resource Advisors or agency personnel.
- The locations will be recorded on the Suppression Repair Map, which will be provided to the assigned Equipment Managers and equipment operators completing this work.
- Do not enter known archeological sites with heavy equipment or skid logs across arch sites.
- Felled trees within arch sites must be left in place unless they can be removed without skidding (i.e. full suspension).
- Where it is feasible, equipment can reach into an arch site and pluck the tree (or portion of a tree) up without skidding.
- If it is necessary for equipment to pass through a known site, raise the blade or other attachments while within the site boundaries.

SQF “West Castle Zone” Incident Maps may be

accessed by going to:

<https://ftp.nifc.gov>

or google: “nifc ftp”

Click:

>Incident Specific Data

>calif_s

>!CALFIRE/

>2020_Incidents

>CA-SQF-002541_CastelWest

>GIS >Products

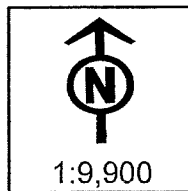
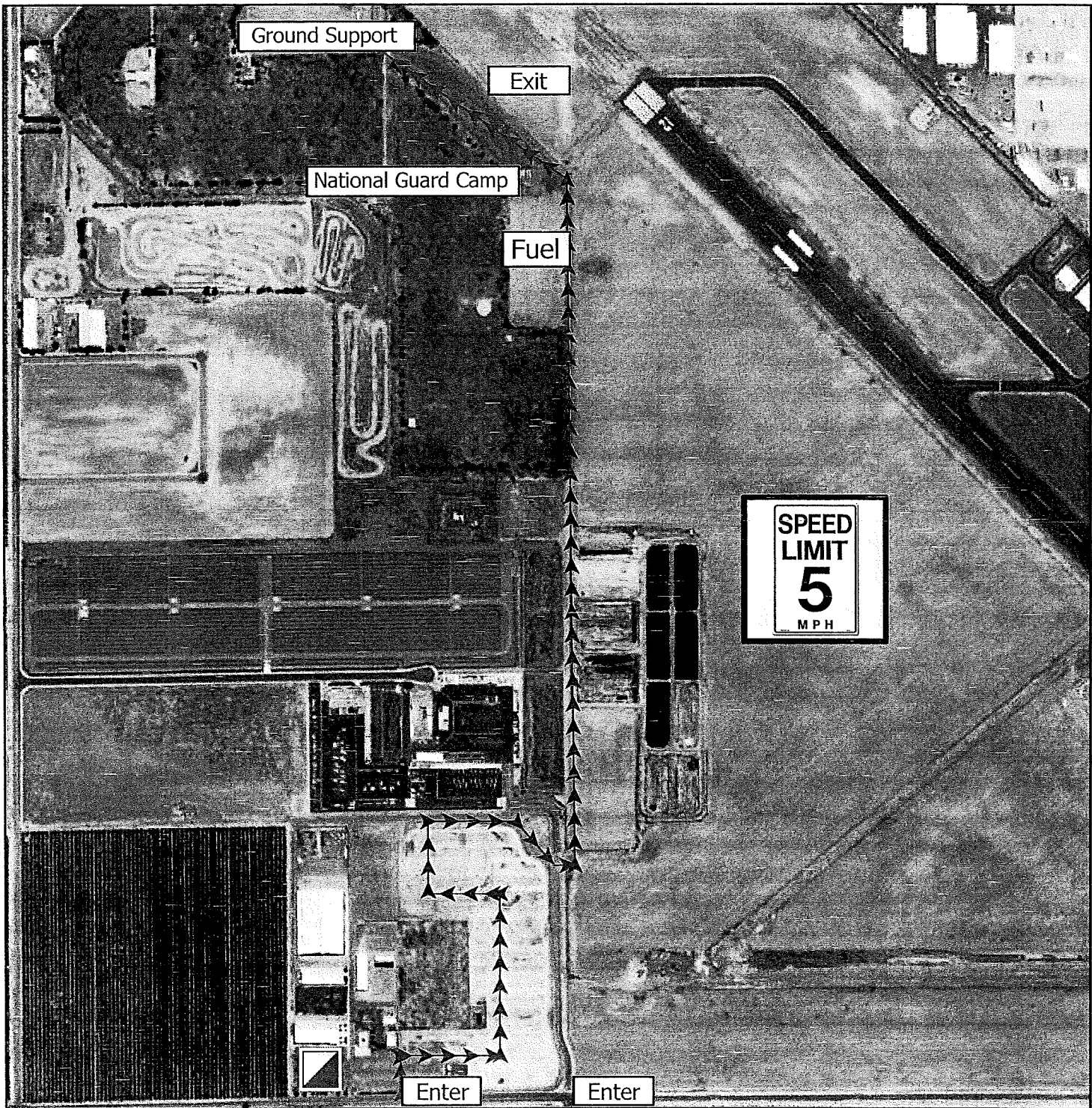
> Desired Date > Select desired map

*Generally, the single most beneficial map to download is the Ops_Overview Map



WEST CASTLE ZONE - SQF COMPLEX GROUND SUPPORT MAP

CA SQF 002541

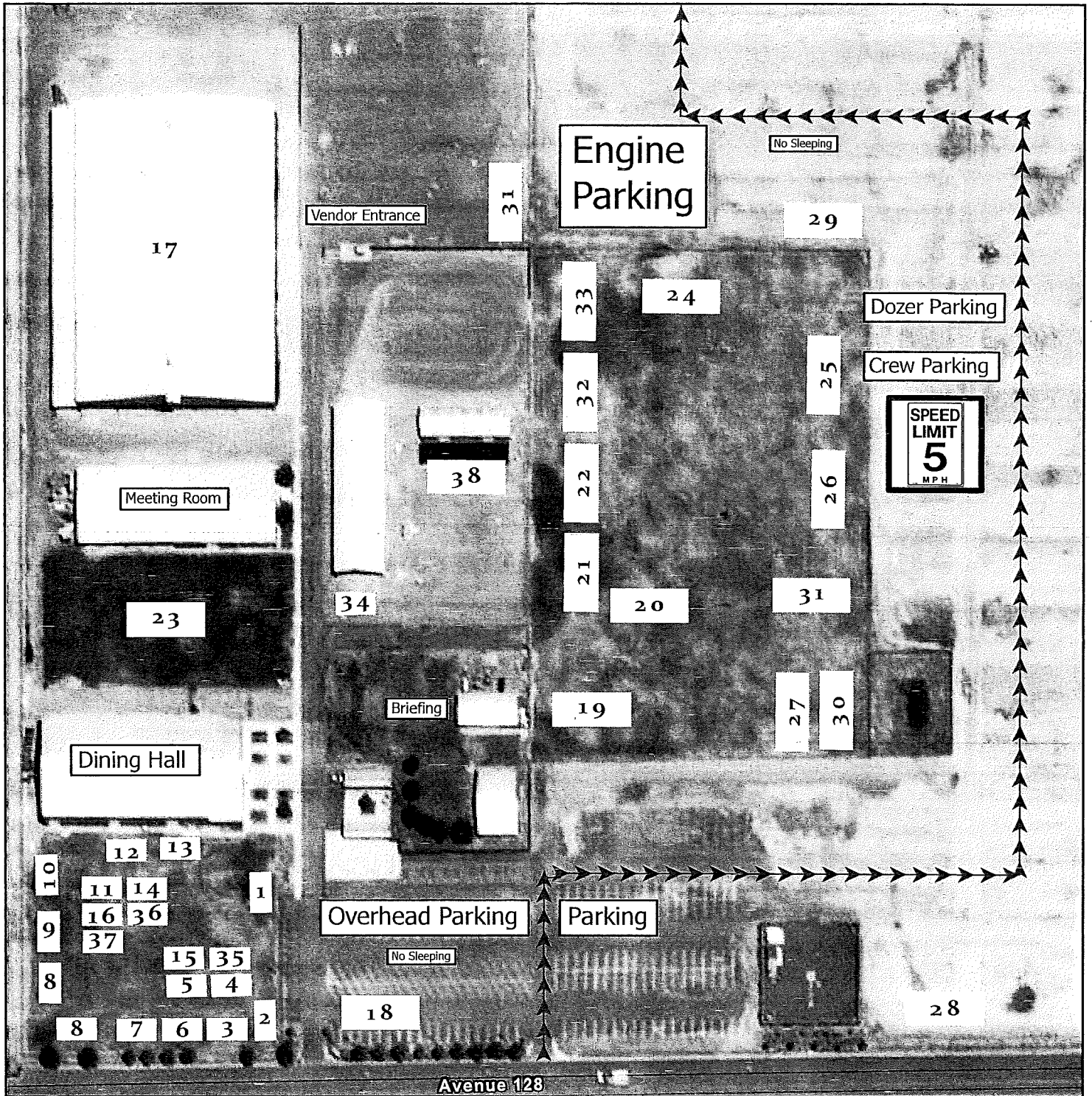


CAL FIRE - INCIDENT MANAGEMENT TEAM 6

Established 1994



WEST CASTLE ZONE - SQF COMPLEX BASE CAMP MAP



Avenue 128



CAL FIRE - INCIDENT MANAGEMENT TEAM 6

Established 1994



WEST CASTLE ZONE - SQF COMPLEX
BASE CAMP INDEX
 CA SQF 002541



1	Liaison	20	Motels
2	OES	21	Check-In / Training / Demob
3	Comm 33	22	Comp / Claims
4	Communications	23	MKU (Mobile Kitchen Unit)
5	Expanded	24	Tent Sleeping
6	Safety	25	Showers
7	Operations	26	Laundry
8	IC	27	Inmate Sleeping
9	IMET / FBAN	28	Vendor Staging
10	Medical Unit	29	Lunch, Water, Ice
11	Copy / Clerical	30	MERT - Med supplies
12	Plans / Resources	31	Sleeping Trailers
13	GIS	32	Employee Support Services
14	Situation	33	INCINET
15	Ordering	34	Cloning (Morning)
16	DINS / READ	35	Cloning (After Hours)
17	Supply	36	Logistics
18	PIO	37	Suppression Repair
19	CAL-MAT Medical Supply	38	Time / Equipment

CAL FIRE - INCIDENT MANAGEMENT TEAM 6

Established 1994

