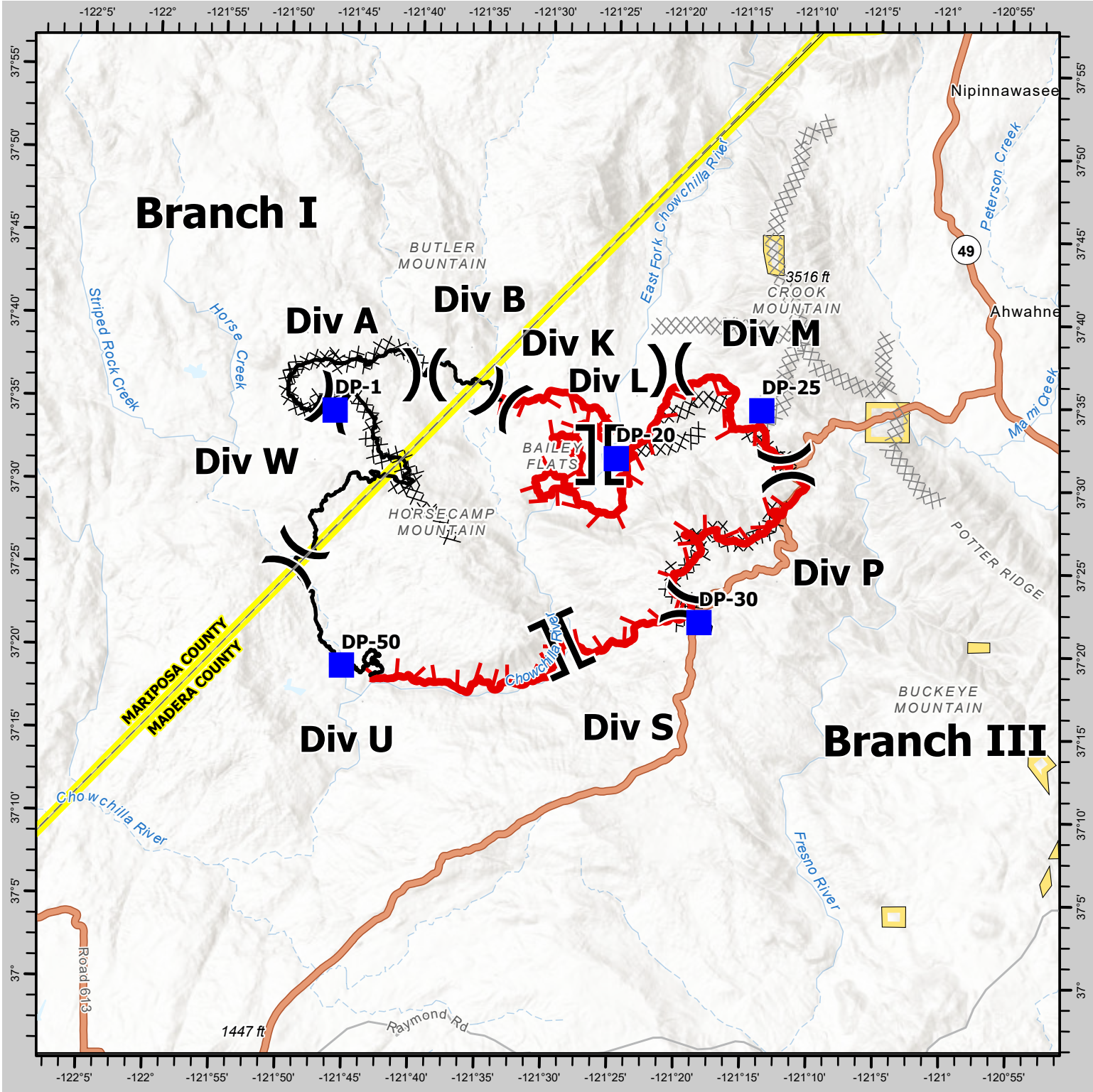




# RIVER INCIDENT BRIEFING MAP

## CA MMU 014714 - 7/15/2021



0 2.5 5 10 15 20 25 Miles

Uncontrolled Fire Edge	County Boundary	Drop Point
Contained Line	Completed Dozer Line	Dip Site
	Proposed Dozer Line	Division Break
		Branch Break

**CAL FIRE - INCIDENT MANAGEMENT TEAM 6**  
*Established 1994*

IMT 6 GISS  
7/14/2021  
2142 Hours  
NAD 83 Teale Albers

DISCLAIMER:  
The displayed incident data is approximate and should only be used for informational purposes. The information contained in this map may be superseded by official CAL FIRE incident reports and is not necessarily accurate for mapping, surveying, or engineering activities.