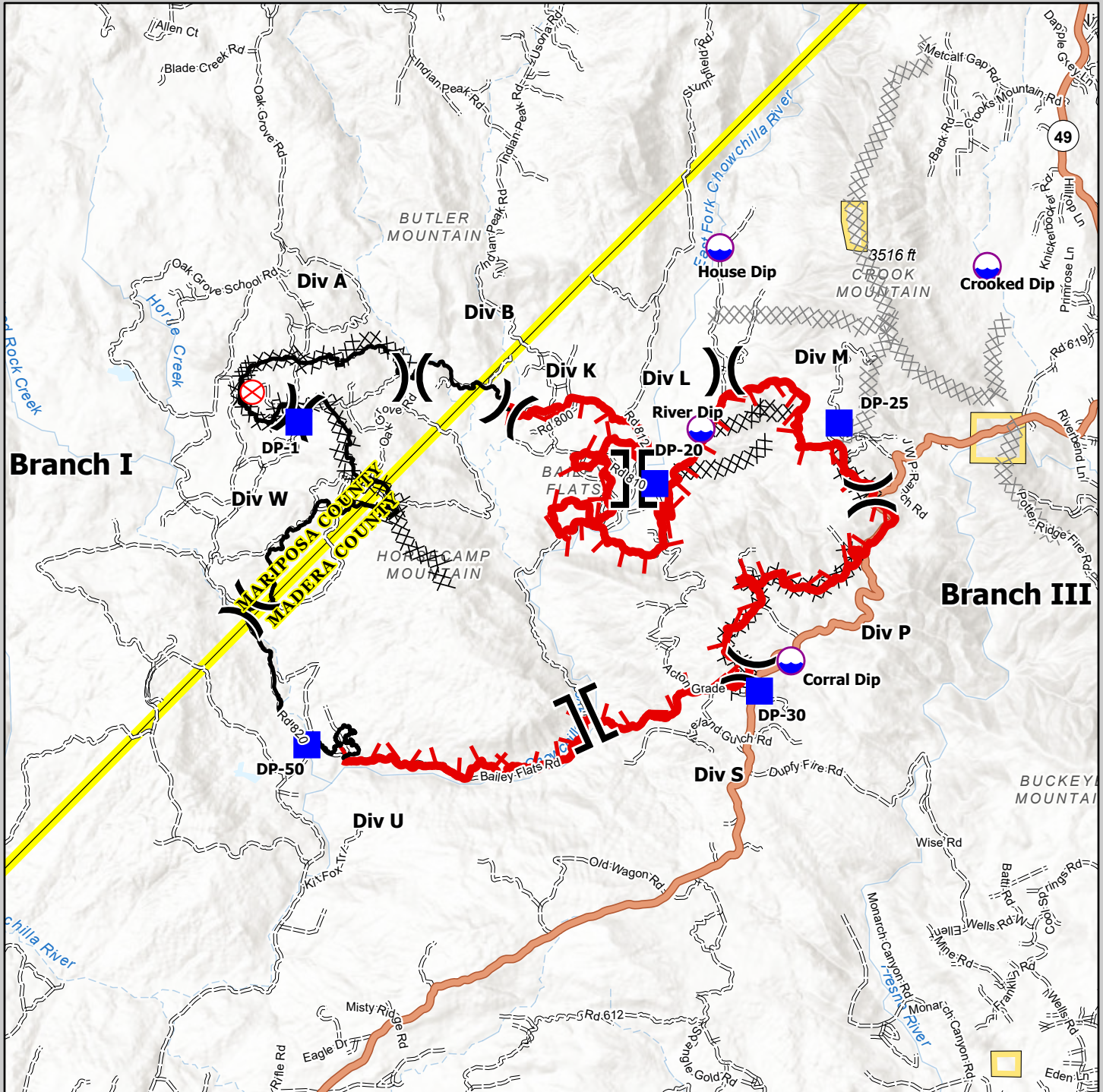




RIVER INCIDENT EVACUATION MAP

CA MMU 014714 - 7/15/2021



1 88,000

- Dip Site
- Branch Break
- Fire Origin
- Fire Edge
- Division Break
- Drop Point
- Completed Dozer Line
- Planned Dozer Line
- Contained Line

CAL FIRE - INCIDENT MANAGEMENT TEAM 6

Established 1994

IMT 6 GISS
7/14/2021
2204 Hours
NAD 83 Teale Albers

DISCLAIMER:
The displayed incident data is approximate and should only be used for informational purposes. The information contained in this document is the property of CAL FIRE and is not to be used for any other purpose without the express written consent of CAL FIRE.