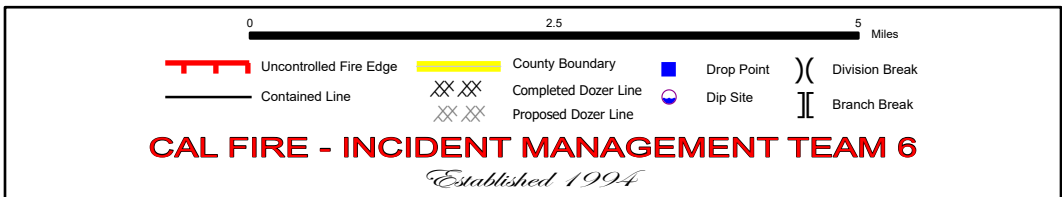
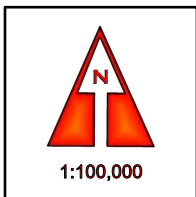
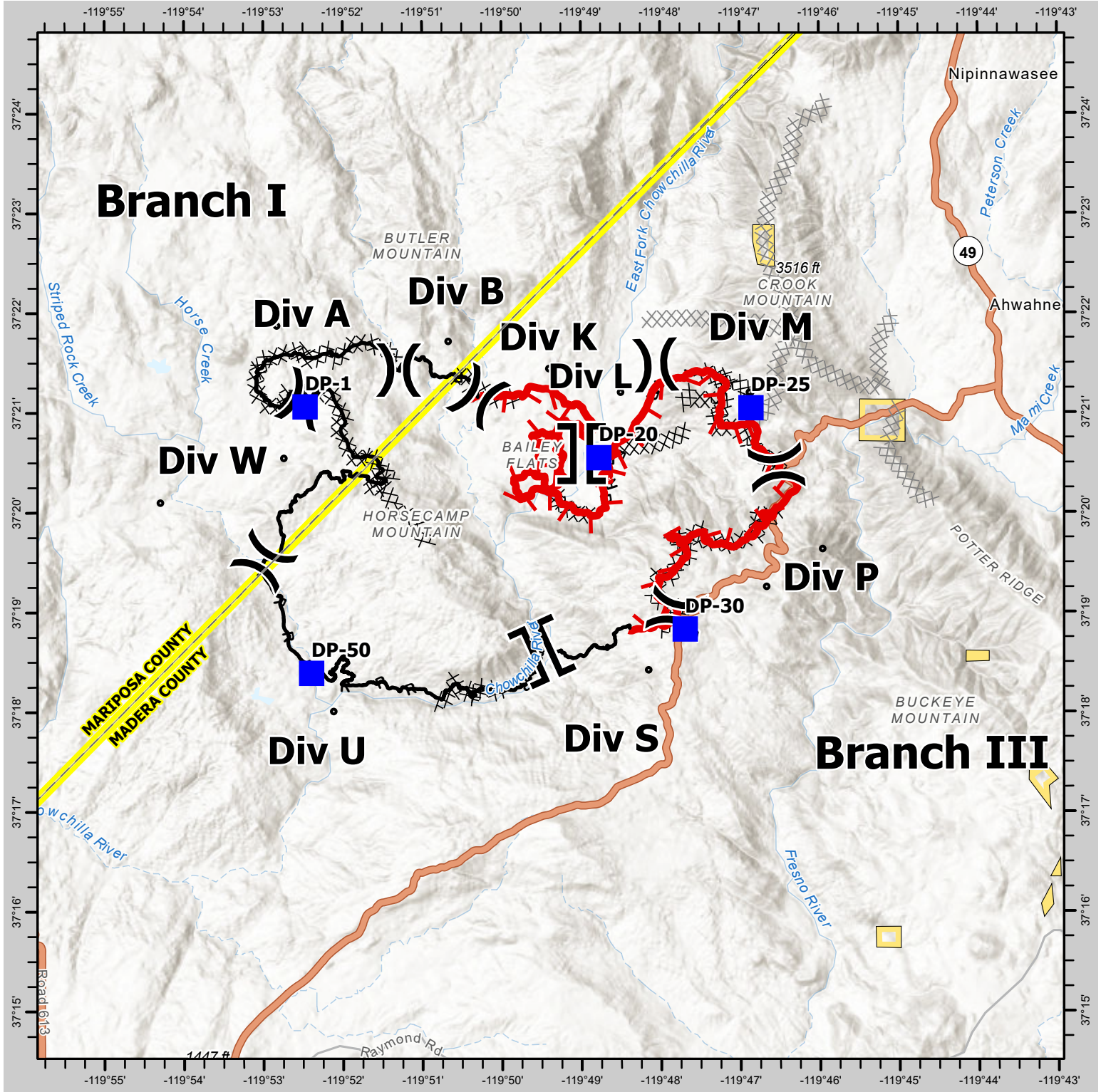




RIVER INCIDENT BRIEFING MAP

CA MMU 014714 - 7/16/2021



IMT 6 GISS
7/15/2021
2131 Hours
NAD 83 Teale Albers

DISCLAIMER:
The displayed incident data is approximate and should only be used for informational purposes. The information contained in this briefing map is for general informational use only. CAL FIRE does not warrant, represent or guarantee the accuracy of the information and is not necessarily accurate for mapping, surveying, or engineering applications.