

INCIDENT ACTION PLAN

River Incident

CA-MMU-014714

Thursday



OPERATIONAL PERIOD

7/15/2021 0700

to

7/16/2021 0700



INCIDENT OBJECTIVES (ICS 202)

1. Incident Name: <p style="text-align: center;">River Incident</p>	2. Operational Period:	Date From: 7/15/2021 Time From: 0700	Date To: 7/16/2021 Time To: 0700
--	-------------------------------	---	-------------------------------------

3. Objective(s):

- Management Objectives**
- Provide for emergency personnel and public safety at all times.
 - Ensure COVID-19 precautions and best practices are met at all times.
 - Protect property, improvements, and infrastructure.
 - Ensure coordinated, timely and accurate release of public information.
 - Foster and maintain relationships with all cooperators and stakeholders.
 - Protect economic, natural, cultural and heritage resources.
 - Maintain fiscal accountability and keep costs commensurate with values at risk.

- Control Objectives**
- Keep the fire North of Striped Rock Creek
 - Keep the fire South of the English Ranch
 - Keep the fire East of Horse Creek
 - Keep the fire West of the Fresno River

General Situational Awareness:

In the COVID-19 environment, high density populations or large groups are particularly at risk. To help protect yourself, your family and to ensure all employees return home safely, make sure to practice social distancing.

Enhanced hygiene (especially handwashing), PPE & monitoring practices help limit the infection rate of first responders.

5. Site Safety Plan Required? Yes No

Approved Site Safety Plan(s) Located at:

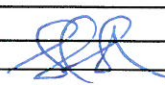
6. Incident Action Plan

<input checked="" type="checkbox"/> ICS 203	<input checked="" type="checkbox"/> ICS 220	<input type="checkbox"/> COVID Daily Check	<input checked="" type="checkbox"/> ICS 214
<input checked="" type="checkbox"/> ICS 204	<input checked="" type="checkbox"/> PIO Message	<input checked="" type="checkbox"/> Peer Support	<input type="checkbox"/> Ground Support Map
<input checked="" type="checkbox"/> ICS 205	<input checked="" type="checkbox"/> Weather Forecast	<input checked="" type="checkbox"/> Facilities Map	<input checked="" type="checkbox"/> Travel Map
<input checked="" type="checkbox"/> ICS 206	<input checked="" type="checkbox"/> Fire Behavior	<input checked="" type="checkbox"/> eFC-33 Input Form	<input checked="" type="checkbox"/> Base Camp Maps
<input checked="" type="checkbox"/> ICS 208	<input checked="" type="checkbox"/> Training Message	<input checked="" type="checkbox"/> Shift Ticket Example	<input type="checkbox"/> Fire Suppression Repair Plan

7. Prepared By: S. Sherwood Position/Title: PSC1 Signature:

8. Approved by Incident Commander: Mike Marcucci Signature:

ORGANIZATION ASSIGNMENT LIST (ICS 203)

1. Incident Name: River Incident		2. Operational Period: Date From: 7/15/2021 Time From: 0700		Date To: 7/16/2021 Time To: 0700	
3. Incident Commander(s) and Command Staff:			7. Operation Section:		
IC/UC's	J.Veik / D. Martin (T)		Operations	S. Lauderdale / J. Wight (T)	
Deputy	M. Marcucci/J. Jansson(T)		Deputy Operations	T. Ernst /S.Lane (T) / C. Bogan (T)	
Safety Officer	J. Buchmeier / J. Novak (T) / T. Adams (T)		Night Ops	J. Ohs / J. Beery (T)	
Information Officer	B.Mercado / R. Lubben (T)		Staging Area	ICP	M. Shaw (12)
Liaison Officer	J. Kiszka / M. Watson(T)				
4. Agency/Organization Representatives:			Branch	I	D. Esades (12) / M. Batham (T)(12)
Agency/Organization	Name		Division/Group	A / B / K	R. West / C. Simms (T)
MMU Line Officer	Chris Trindade		Division/Group	U / W	M. Klusyk
PG&E	Deron Mills		Division/Group		
USFS	Jeff Crandell		Branch	III	M. Martinez (12) / S. Fairbanks (T)(12)
Madera Sheriff Office	Darin McMechan		Division/Group	L	W. Goodman
Mariposa Sheriff Office	Mike Charman		Division/Group	M	J. Taylor
CAL OES	Javier Lara		Division/Group	P / S	K. Mancebo / D. McCarroll (T)
CDCR	David Fish		Division/Group		
			Division/Group		
			Branch	FSR	C. Waag (12) / K. Swope (T)(12)
			Division/Group		
			Staging Area	ICP	M. Shaw (12)
			Division/Group		
			Division/Group		
			Division/Group		
			Division/Group		
			Division/Group		
			Division/Group		
			Division/Group		
			Division/Group		
			Division/Group		
			Division/Group		
			Division/Group		
			Division/Group		
5. Planning Section:			Division/Group		
Chief	G. Garcia		Division/Group		
Deputy	J. Worden (T)		Division/Group		
Resource Unit	J. Anderson / J. Heald / M. Thomas		Division/Group		
Situation Unit	I.Crossley /J. Abeel (T)/D.Van Goidsenhoven		Division/Group		
Demobilization Unit	T. Shevenell / L. Pasero (T)		Division/Group		
GISS	C. Poli		Division/Group		
FBAN	S. Volmer		Division/Group		
IMET	J. Dudley		Air Operations Branch:	Director:	M. Stanford / C. Inwood (T)
Training Tech Spec	D.Shaw		Air Support Group Supervisor	J. Collins (T)	
6. Logistics Section:			Air Tactical Group Supervisor	A. Sanchez	
Chief	A. Long / J. Warden (T)		Helibase Manager	R. Johnson	
Deputy Chief	B. Brewer (T)				
Supply Unit	P. Lee		8. Finance/Administration Section:		
Facilities Unit	D. Zumkeller		Chief	S. Hogan	
Ground Support Unit	J. Christofferson		Deputy Chief	G. Belk	
Communications Unit	C. Johns		Time Unit	J. Navarro / J. Andrade (T)	
Medical Unit	J. Segura / R. Beeson(T)		Procurement Unit	M. Lamonica	
Motel Unit	J. Tomsich/B.Strohmayer(T)		Comp/Claims Unit	B. Stirton	
			Cost Unit	J. Tapia	
Prepared By: Name:	S. Sherwood	Position/Title:	PSC 1	Signature:	
ICS 203		Date/Time:	7/14/2021 2300 hours		



INCIDENT Weather Forecast



FORECAST NO: 2
PREDICTION FOR: 24 Hour Shift
SHIFT DATE: 07/15/21
FORECAST ISSUED: 07/14/21 1700

NAME OF FIRE: River
UNIT: Cal Fire MMU
SIGNED: Bruno Rodriguez (T)
Incident Meteorologist

WEATHER DISCUSSION: High pressure will weaken slightly on Thursday as a low pressure trough expands along the northern California coast, allowing temperatures to fall a couple of degrees. Minimum daytime humidity will experience very little change on Thursday, with marginally lower overnight recovery Thursday night and minimum humidity values Friday. Winds will be dominated by typical diurnal wind patterns, with light downslope winds each night under 5 mph, and increasing southwest winds from late morning through late afternoon.

WEATHER FORECAST:

. THURSDAY . . .

Sky/weather.....Sunny.
Max temperature.....92-95.
Min humidity.....18-24 percent.
Eye level winds.....South 1-5 mph through 1000, becoming west-southwest 3-8 mph with gusts to 15 mph after 1100.
Surrounding ridge...Southwest 5-10 mph.
Mixing height.....Increasing to around 5500 ft AGL.
Transport winds.....Southeast around 12 mph.


. THURSDAY NIGHT . . .

Sky/weather.....Clear.
Min temperature.....68-74.
Max humidity.....44-48 percent.
Eye level winds.....West 3-5 mph with gusts to 12 mph before 2000, then downslope 1-3 mph.
Surrounding ridge...East-southeast 4-6 mph.
Mixing height.....Lowering to near surface level.
Transport winds.....East 4-8 mph.

. FRIDAY . . .

Sky/weather.....Sunny.
Max temperature.....92-96.
Min humidity.....16-21 percent.
Eye level winds.....South 1-5 mph through 1000, becoming west-southwest 3-8 mph with gusts to 15 mph after 1100.
Surrounding ridge...Southwest 5-10 mph.
Mixing height.....Increasing to around 6000 ft AGL.
Transport winds.....South around 10 mph.

FIRE BEHAVIOR FORECAST

FORECAST NUMBER: 3	TYPE OF FIRE: WILDFIRE
FIRE NAME: RIVER CAMMU-014714	OPERATIONAL PERIOD: 7/15-7/16/21 0700-0700
DATE ISSUED: 7/14/2021	TIME ISSUED: 1900
UNIT: CALFIRE MADERA MARIPOSA MERCED	SIGNED:  Typed/printed: Stephen Volmer FBAN

INPUTS

WEATHER SUMMARY:

Sunny with a stable atmosphere will continue. Clear conditions throughout the day, with minor smoke lingering in the drainages during the morning hours. Temperatures will be in the mid 90's with minimum daytime humidity between 18-24%. Winds will continue to be diurnal, following the Chowchilla drainages, watch for wind shifting to the southwest by noon, with ridgetop speeds of 5-10 mph. Visibility will improve in the early afternoon as the winds transition. Overnight humidity recovery will be increasing, ranging in the upper 40's with moderate recovery.

Review the weather forecast for more details

OUTPUTS

FIRE BEHAVIOR

FUEL MODEL	RATE OF SPREAD FT/MIN	FLAME LENGTH FT	SPOTTING DISTANCE	PROBABILITY OF IGNITION
GRASS	91	5	.20 mi	80%
BRUSH	112	24	.60 mi	80%
OAK WOODLAND	10	3	.25 mi	80%

GENERAL:

All the fuel in the area is extremely dry and receptive to ignition. Current ERC's for the area are above the 97th percentile. Local fuel moistures are at critical levels. Active ground fire will continue to smolder, creep through, and burn out interior islands, producing ember cast that could threaten the lines. Heavy fuels will continue to burn down and produce deep seated, very hot ash pits and stump holes. Fire weakened trees, branches, and burning snags continue to threaten control lines and roadways, as well as producing extremely hot deep seated ashpits and stumpholes.

SPECIFIC:

- The area has a large amount of tree mortality with multiple species. These dead and drought stressed trees will release prematurely and are prime receptors for fire to hide in and ignite later.
- Fuels in the area are at or near critical levels. Current ERC and 100hr fuels are at historic levels and very receptive to ignition.
- Rollout of heavy dead/down material will continue to threaten the lines around the entire incident.

AIR OPERATIONS: Visibility will be clear throughout the operational period. Transport winds will be southeast at 12mph, blowing the smoke towards the Yosemite Valley. Ridgetops winds will gust to 10 mph with a mixing height of 5,000' AGL Have a secondary plan in place before requesting air assets, they may be delayed or unable to assist due to limited visibility, or reassignment.

Sunset 20:18

Sunrise 05:51

SAFETY:

- Multiple river drainages run North to South and will be in alignment with daily wind patterns.
- The area has a large amount of tree mortality in multiple species. Look up and live.
- The fine dead fuels in the area will allow for rapid growth of spot fires and new incidents. Be alert.
- On relatively small fire or deceptively quite areas of large fires.



SAFETY MESSAGE RIVER INCIDENT



1. Incident Name: RIVER	2. Operational Period: Date From: 07/15/21 Time From: 07:00	Date To: 07/16/21 Time To: 07:00
-------------------------	--	-------------------------------------

Don't Let Your Guard Down; Stay Vigilant. - ALWAYS wear the proper PPE.

HEALTH & WELLNESS: Take Care of Ourselves & Others:

Be cognizant of COVID-19 Best Practices – Wipe Surfaces & Door Handles.
MONITOR yourself and your assigned personnel for FATIGUE and DEHYDRATION.
Avoid Complacency; Maintain Good Work Rest Cycles.
Caution: Rattle Snakes are out.

MOP UP Operations:

WATCH OUT for Fire Weakened trees: especially with wind. LOOK Up!
Watch your FOOTING, pre-plan work, Pace your operation(s).

Projected Fire Behavior & Wind Conditions ADD DANGERS in all Operations:

MONITOR Winds changing and increasing; monitor weather conditions/take weather.
Fuels: RECEPTIVE - Rates of Spread: Spotting – Watch for alignment!
ANTICIPATE Fire Behavior & Rates of Spread for flare ups or roll out.

DEFENSIVE DRIVING REQUIREMENTS: Be the PROFESSIONAL:

CAUTION with congestion or blind corners; watch for civilian traffic.
EVALUATE your driving routes; monitor speed, gear selection, & brakes.
TURN ON headlights; prepare for the unexpected.
UTILIZE chocks, backers and spotters; when in doubt scout it out!

Terrain & Drainages:

Steep, Footing Issues, Access Issues – Creates alignment and Safety Issues.
WATCH OUT for fires establishing in River Bottoms; have look outs & Escape Routes.

Primary, Alternate, Contingency, Emergency Planning on all new assignments;
Calculate Risk and Take Appropriate Actions based on predicted extreme fire behavior and available resources; have them in-place prior to executing any plan.

**REST when opportunity provides itself; SEEK Shade.
Time to Think – Time to Drink! Stay Hydrated.**

4. Site Safety Plan Required? Yes No

5. Prepared by: Name: Joe Buchmeier SOF1

ICS 208

Date/Time: July 14, 2021 / 1330

1. Incident Name: RIVER	2. Incident Number: CA-MMU-014714
--------------------------------	--

3. Incident Area	4. Hazards/Risks	5. Mitigations
ALL	COVID 19, ILLNESS, & HYGIENE	Adhere to local, state, federal and CDC health guidelines. Maintain social distancing when applicable. Wear a mask if unvaccinated. Report any illness symptoms immediately to a supervisor. Hygiene, hand washing, and disinfecting of surfaces & handles often.
ALL	FATIGUE, HEAT, & DEHYDRATION	Don't underestimate the task at hand. Adhere to work/rest cycle for all task(s). Drink water before, during and after shifts, up to 1.5 gal. per shift. Review Heat Related Emergencies (IRPG Pg. 109). Seek shade when you can. Watch for stack-effect of fatigue and exhaustion; REST & Plan operations.
ALL	COMPLACENCY	Be alert for signs of fatigue and distractions; remain engaged. Know your LCES and maintain situational awareness. Have the right radio clone. Know your adjoining forces and FREQUENCIES. Primary, Alternate, Contingency, Emergency on all new assignments.
ALL	REPTILES & ANIMALS	Watch Out for RATTLESNAKES! Be cautious to other natural animals and hazards associated with each.
ALL	MOP UP, REHAB, & REPAIR	Conduct thorough briefing for all personnel; Assure proper PPE. Ensure LCES in place prior to engagement; Establish adequate Safety Zones. Use Downhill Line Checklist. Follow "Look Up, Look Down, Look Around" procedures. Utilize Risk Management Process...reference the IRPG. Watch for Heavy Equipment and Roll Out.
ALL	STEEP TERRAIN / ROLLING DEBRIS	Watch your footing while hiking in steep terrain. Be careful of loose rolling debris. Maintain Situational Awareness . Know Tree Hazards in the work area. Dangerous Mountain Roads – SLOW Defensive Driving.
ALL	FALLING MODULES & HAZARD TREES.	The ones that haven't fallen yet; look up, look around – identify hazard trees. Identify and isolate the area to provide for the safety of others. Drought-Stressed Trees are weakened; Flag and make proper notifications. Do not fall trees out of your certification level. Evaluate wind and lean prior to making cuts.
ALL	DRIVING HAZARDS	SLOW DOWN! Do 360's before moving vehicles. Utilize Chocks. Drive with headlights & seatbelts on; drive defensively on steep winding roads. Watch Speed through communities; public perception and safety are key. Utilize spotters and backers; when in doubt, scout it out. Assess Road Conditions; Flag hazard if you cannot mitigate, report.
ALL	MINE SHAFTS	Caution to mine shafts that may be in the fire area. Do not enter or seek shade in shafts; stay clear and identify.
ALL	AIRCRAFT OPERATIONS	Monitor air-to-ground frequencies; they are your eyes in the sky. Use air-to-ground frequency to communicate with aircraft. Use clear, concise statements when directing aircraft; CLEAR THE LINE! Only utilize aircraft to insert personnel on the line when necessary.

6. Prepared by: **Joe Buchmeier SOF1** 

ICS-215a	Operational Period: 07/15-16/2021 0700-0700
----------	---

ASSIGNMENT LIST (ICS 204 WF)

CONTROLLED UNCLASSIFIED
INFORMATION//BASIC

1. Incident Name:	2. Operational Period:	3. Branch	Division
River Incident	Date From: 07/15/21 Date To: 07/16/21 Time From: 0700 Time To: 0700	I	A / B / K
4. Operations Personnel:		Page 1 of 1	Alpha

Operations Section Chief: S. Lauderdale / J. Wight (T)	Night Ops: J. Ohs / J. Beery (T)
Branch Director: D. Esades (12) / M. Batham (T)(12)	Branch Safety:
Division/Group Supervisor: R. West / C. Simms (T)	Air Attack: A. Sanchez

5. Resources Assigned:		** Resources Below in Bold are 12 Hour **					
Resource Identifier	ALS	LWD	Leader	Personnel	Request #	Hours	Reporting Location
STC SLU 9340C			L. Ermigarat	17	E-50	0700-0700	ICP
ENG MMU 4254						0700-0700	ICP
ENG MMU 4275						0700-0700	ICP
ENG MMU 4295					E-10	0700-0700	ICP
STG TUU 9414G (CDF)			D. Abbott	40	C-5	0700-0700	ICP
W/T PVT E-93				2	E-93	0700-0700	ICP
W/T PVT E-114				2	E-114	0700-0700	ICP
W/T PVT E-117			E. Ford	2	E-117	0700-0700	ICP
W/T PVT E-122				2	E-122	0700-0700	ICP
W/T PVT E-124			S. Hastings	2	E-124	0700-0700	ICP
W/T PVT E-158				2	E-158	0700-0700	ICP

6. Work Assignments:
Mop up 300' in from control line.
Mop up and Patrol.
Backhaul trash.
Look for opportunities to backhaul hose.

7. Special Instructions:
Division radio identifier is Alpha.
Branch I FEMP INMAN / FEMT CAPPO (12 Hour Resource)
Branch I FEMT RUIZ / FEMP CRANE (12 Hour Resource)

8. Communications							
Name	Ch	Function	Rx Freq	Rx Tone	Tx Freq	Tx Tone	Notes
CDF C1	1	COMMAND	151.3550N	103.5 (T8)	159.3000N	136.5 (T4)	ALL BRANCHES & DIVISIONS
CDF T26	2	TACTICAL	159.2925N	192.8 (T16)	159.2925N	192.8 (T16)	
CDF T18	14	AIR TO GROUND	159.3450N	192.8 (T16)	159.3450N	192.8 (T16)	ALL BRANCHES & DIVISIONS
CALCORD	15	MEDICAL	156.0750N	156.7 (T6)	156.0750N	156.7 (T6)	ALL BRANCHES & DIVISIONS
GUARD 14	16	EMERGENCY	168.6250N		168.6250N	110.9 (T1)	ALL BRANCHES & DIVISIONS

9. Prepared by: Name:	Jack Worden	RESL		
	Signature:			
ICS 204	Date/Time: 7/14/2021 2200			
		24 Hr Shift:	69	
		12 Hr Shift:	0	
		Total:	69	

ASSIGNMENT LIST (ICS 204 WF)

CONTROLLED UNCLASSIFIED
INFORMATION//BASIC

1. Incident Name: <p style="text-align: center;">River Incident</p>	2. Operational Period: Date From: 07/15/21 Date To: 07/16/21 Time From: 0700 Time To: 0700	3. Branch Division <p style="text-align: center;">I U / W</p> <p style="text-align: center;">Page 1 of 1 Union</p>
--	---	---

4. Operations Personnel:	
Operations Section Chief: S. Lauderdale / J. Wight (T)	Night Ops: J. Ohs / J. Beery (T)
Branch Director: D. Esades (12) / M. Batham (T)(12)	Branch Safety:
Division/Group Supervisor: M. Klusyk	Air Attack: A. Sanchez

5. Resources Assigned:	** Resources Below in Bold are 12 Hour **					
Resource Identifier	ALS	LWD	Leader	Personnel	Request #	Hours Reporting Location
STC OES 6828C			T. Bruner	22	E-84	0700-0700 DP-1
STC SBC 9322C			S. Sanchez	18	E-23	0700-0700 DP-1
W/T PVT E-116					E-116	0700-0700 DP-1
W/T PVT E-290			J. Gookin	2	E-290	0700-0700 DP-1

6. Work Assignments:
Mop up 300' in from control line.
Mop up and Patrol.
Backhaul trash.
Look for opportunities to backhaul hose.

7. Special Instructions:
Division radio identifier is Union.
Branch I FEMP INMAN / FEMT CAPPO (12 Hour Resource)
Branch I FEMT RUIZ / FEMP CRANE (12 Hour Resource)

8. Communications

Name	Ch	Function	Rx Freq	Rx Tone	Tx Freq	Tx Tone	Notes
CDF C1	1	COMMAND	151.3550N	103.5 (T8)	159.3000N	136.5 (T4)	ALL BRANCHES & DIVISIONS
CDF T27	3	TACTICAL	159.3075N	192.8 (T16)	159.3075N	192.8 (T16)	
CDF T18	14	AIR TO GROUND	159.3450N	192.8 (T16)	159.3450N	192.8 (T16)	ALL BRANCHES & DIVISIONS
CALCORD	15	MEDICAL	156.0750N	156.7 (T6)	156.0750N	156.7 (T6)	ALL BRANCHES & DIVISIONS
GUARD 14	16	EMERGENCY	168.6250N		168.6250N	110.9 (T1)	ALL BRANCHES & DIVISIONS

9. Prepared by: Name:	Jack Worden RESL		24 Hr Shift: 42
	Signature:		12 Hr Shift: 0
ICS 204	Date/Time: 7/14/2021 2200		Total: 42

ASSIGNMENT LIST (ICS 204 WF)

CONTROLLED UNCLASSIFIED
INFORMATION//BASIC

1. Incident Name: <p style="text-align: center;">River Incident</p>	2. Operational Period: Date From: 07/15/21 Date To: 07/16/21 Time From: 0700 Time To: 0700	3. Branch Division <p style="text-align: center;">III L</p> <p style="text-align: center;">Page 1 of 1 Lima</p>
--	---	--

4. Operations Personnel:	
Operations Section Chief: S. Lauderdale / J. Wight (T)	Night Ops: J. Ohs / J. Beery (T)
Branch Director: M. Martinez (12) / S. Fairbanks (T)(12)	Branch Safety:
Division/Group Supervisor: W. Goodman	Air Attack: A. Sanchez

5. Resources Assigned:		** Resources Below in Bold are 12 Hour **					
Resource Identifier	ALS	LWD	Leader	Personnel	Request #	Hours	Reporting Location
STC XSL 1473C			E. Shalob	19	E-86	0700-0700	ICP
STC MVU 9330C			C. Hendrie	18	E-202	0700-0700	ICP
STC OES 6849C	X		B. Hayward	21	E-85	0700-0700	ICP
ENG MMU 4262			J. Bibby	4	E-6	0700-0700	ICP
ENG MMU 4281			B. Hagan	3	E-12	0700-0700	ICP
ENG MMU 4282			K. Mankins	3	E-7	0700-0700	ICP
ENG MMU 4292			L. Henry	3	E-8	0700-0700	ICP
ENG MMU 4294			G. Avalos	4	E-11	0700-0700	ICP
STG AEU 9273G (CCC)			A. Cholico	32	C-26	0700-0700	ICP
STG SLU 9346G (CCC)			E. Ornelas	29	C-28	0700-0700	ICP
W/T PVT E-113				2	E-113	0700-0700	ICP
W/T PVT E-119			J. Bese	2	E-119	0700-0700	ICP
W/T PVT E-120				2	E-120	0700-0700	ICP
W/T PVT E-123				2	E-123	0700-0700	ICP
W/T PVT E-287			R. Vieyra	2	E-287	0700-0700	ICP

6. Work Assignments:
 Fall hazard trees that threaten control lines.
 Hold fire within current control lines.
 Mop up 500' in from control line.
 Backhaul trash.

7. Special Instructions:
 Branch III FEMT FURTADO / FEMP TRUBIN (12 Hour Resource)
 Branch III FEMP HAMMOND / FEMP BORUM (12 Hour Resource)

8. Communications							
Name	Ch	Function	Rx Freq	Rx Tone	Tx Freq	Tx Tone	Notes
CDF C1	1	COMMAND	151.3550N	103.5 (T8)	159.3000N	136.5 (T4)	ALL BRANCHES & DIVISIONS
CDF T28	4	TACTICAL	151.1825N	192.8 (T16)	151.1825N	192.8 (T16)	
CDF T18	14	AIR TO GROUND	159.3450N	192.8 (T16)	159.3450N	192.8 (T16)	ALL BRANCHES & DIVISIONS
CALCORD	15	MEDICAL	156.0750N	156.7 (T6)	156.0750N	156.7 (T6)	ALL BRANCHES & DIVISIONS
GUARD 14	16	EMERGENCY	168.6250N		168.6250N	110.9 (T1)	ALL BRANCHES & DIVISIONS

9. Prepared by: Name:	Jack Worden	RESL	24 Hr Shift: 146
	Signature:		12 Hr Shift: 0
ICS 204	Date/Time: 7/14/2021 2200		Total: 146

ASSIGNMENT LIST (ICS 204 WF)

CONTROLLED UNCLASSIFIED
INFORMATION//BASIC

1. Incident Name: <p style="text-align: center;">River Incident</p>	2. Operational Period: Date From: 07/15/21 Date To: 07/16/21 Time From: 0700 Time To: 0700	3. Branch Division <p style="text-align: center;">III M</p> <p style="text-align: center;">Page 1 of 1 Mike</p>
--	---	--

4. Operations Personnel:	
Operations Section Chief: S. Lauderdale / J. Wight (T)	Night Ops: J. Ohs / J. Beery (T)
Branch Director: M. Martinez (12) / S. Fairbanks (T)(12)	Branch Safety:
Division/Group Supervisor: J. Taylor	Air Attack: A. Sanchez

5. Resources Assigned:		** Resources Below in Bold are 12 Hour **					
Resource Identifier	ALS	LWD	Leader	Personnel	Request #	Hours	Reporting Location
STC TCU 9440C			J. Fredrick	19	E-27	0700-0700	ICP
STC XSC 2312C			T. Mortenson	21	E-198	0700-0700	ICP
STC OES 5804C			C. Long	19	E-38	0700-0700	ICP
ENG MMU 4262			J. Bibby	4	E-6	0700-0700	ICP
STG TCU 9446G (CDF)			E. Blakeway	31	C-4	0700-0700	ICP
STG MMU 9425G (CDF)			C. Bernard	27	C-37	0700-0700	ICP
VNC CRW 12			J. Enneking	20		0700-1900	ICP
CRW SBC 11			T. Gilliam		C-6	0700-1900	ICP
DOZ FKU 4340			B. Eaton	2	E-24	0700-0700	ICP
DOZ TCU 4445			M. Pfeiffer	3	E-39	0700-0700	ICP
W/T PVT E-96				2	E-96	0700-0700	ICP
W/T PVT E-115			M. Galleti	2	E-115	0700-0700	ICP
W/T PVT E-278			N. Trayhan	2	E-278	0700-0700	ICP
W/T PVT E-289					E-289	0700-0700	ICP

6. Work Assignments:
 Hold fire within current control lines.
 Mop up 300' in from control line.
 Mop up and Patrol.
 Backhaul trash.

7. Special Instructions:
 Branch III FEMT FURTADO / FEMP TRUBIN (12 Hour Resource)
 Branch III FEMP HAMMOND / FEMP BORUM (12 Hour Resource)

8. Communications							
Name	Ch	Function	Rx Freq	Rx Tone	Tx Freq	Tx Tone	Notes
CDF C1	1	COMMAND	151.3550N	103.5 (T8)	159.3000N	136.5 (T4)	ALL BRANCHES & DIVISIONS
CDF T29	5	TACTICAL	151.3475N	192.8 (T16)	151.3475N	192.8 (T16)	
CDF T18	14	AIR TO GROUND	159.3450N	192.8 (T16)	159.3450N	192.8 (T16)	ALL BRANCHES & DIVISIONS
CALCORD	15	MEDICAL	156.0750N	156.7 (T6)	156.0750N	156.7 (T6)	ALL BRANCHES & DIVISIONS
GUARD 14	16	EMERGENCY	168.6250N		168.6250N	110.9 (T1)	ALL BRANCHES & DIVISIONS

9. Prepared by: Name:	Jack Worden	RESL	24 Hr Shift: 132
	Signature:		12 Hr Shift: 20
ICS 204	Date/Time: 7/14/2021 2200		Total: 152

ASSIGNMENT LIST (ICS 204 WF)

CONTROLLED UNCLASSIFIED
INFORMATION//BASIC

1. Incident Name:	2. Operational Period:	3. Branch	Division
River Incident	Date From: 07/15/21 Date To: 07/16/21 Time From: 0700 Time To: 0700	III	P / S

4. Operations Personnel:		Page 1 of 1	Papa
Operations Section Chief: S. Lauderdale / J. Wight (T)		Night Ops: J. Ohs / J. Beery (T)	
Branch Director: M. Martinez (12) / S. Fairbanks (T)(12)		Branch Safety:	
Division/Group Supervisor: K. Mancebo / D. McCarroll (T)		Air Attack: A. Sanchez	

5. Resources Assigned:		** Resources Below in Bold are 12 Hour **					
Resource Identifier	ALS	LWD	Leader	Personnel	Request #	Hours	Reporting Location
STC TCU 9442C			J. Acosta	20	E-77	0700-0700	ICP
STC BEU 9460C			B. Bloxham	17	E-208	0700-0700	ICP
T/F RIVER 1			D. Wristen	15		0700-0700	ICP
ENG MMU 4261			P. Young	3	E-16	0700-0700	ICP
ENG MMU 4270			T. Marshall	3	E-193	0700-0700	ICP
STG CZU 9174G (CDC)			E. Solis	34	C-27	0700-0700	ICP
STG MMU 9424G (CDC)			E. Barajas	30	C-25	0700-0700	ICP
STG 9441G (CDC)						0700-0700	ICP
W/T PVT E-118			K. Jackson	2	E-118	0700-0700	ICP
W/T PVT E-121				1	E-121	0700-0700	ICP
W/T PVT E-159			J. McDonough	1	E-159	0700-0700	ICP
W/T PVT E-288			S. Hurt	1	E-288	0700-0700	ICP

6. Work Assignments:
 Hold fire within current control lines.
 Improve direct fire line. Mop up 500' in from control line.
 Mop up and Patrol.
 Backhaul trash.

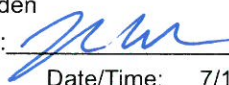
7. Special Instructions:
 Branch III FEMT FURTADO / FEMP TRUBIN (12 Hour Resource)
 Branch III FEMP HAMMOND / FEMP BORUM (12 Hour Resource)

8. Communications							
Name	Ch	Function	Rx Freq	Rx Tone	Tx Freq	Tx Tone	Notes
CDF C1	1	COMMAND	151.3550N	103.5 (T8)	159.3000N	136.5 (T4)	ALL BRANCHES & DIVISIONS
CDF T30	6	TACTICAL	151.3925N	192.8 (T16)	151.3925N	192.8 (T16)	
CDF T18	14	AIR TO GROUND	159.3450N	192.8 (T16)	159.3450N	192.8 (T16)	ALL BRANCHES & DIVISIONS
CALCORD	15	MEDICAL	156.0750N	156.7 (T6)	156.0750N	156.7 (T6)	ALL BRANCHES & DIVISIONS
GUARD 14	16	EMERGENCY	168.6250N		168.6250N	110.9 (T1)	ALL BRANCHES & DIVISIONS

9. Prepared by: Name:	Jack Worden	RESL	24 Hr Shift: 127
	Signature:		12 Hr Shift: 0
ICS 204	Date/Time: 7/14/2021 2200		Total: 127

ASSIGNMENT LIST (ICS 204 WF)

CONTROLLED UNCLASSIFIED
INFORMATION//BASIC

1. Incident Name:		2. Operational Period:				3. Branch		Divison	
River Incident		Date From: 07/15/21	Date To: 07/16/21			FSR			
		Time From: 0700	Time To: 0700						
4. Operations Personnel:						Page 1 of 1 Suppression Repair			
Operations Section Chief: S. Lauderdale / J. Wight (T)				Night Ops: J. Ohs / J. Beery (T)					
Branch Director: C. Waag (12) / K. Swope (T)(12)				Branch Safety:					
Division/Group Supervisor: B. Mattos				Air Attack: A. Sanchez					
5. Resources Assigned:		** Resources Below in Bold are 12 Hour **							
Resource Identifier	ALS	LWD	Leader	Personnel	Request #	Hours	Reporting Location		
STF 610					E-13	0700-1900	ICP		
DOZ MMU 4241			R. Bradley	3	E-22	0700-1900	ICP		
DOZ MMU 4242			M. Lingenfelter	3	E-1	0700-1900	ICP		
DOZ MMU 4245			R. Gauthier	4	E-2	0700-1900	ICP		
DOZ PVT E-33			S. Graham	2	E-33	0700-1900	ICP		
DOZ PVT E-51			C. Kaelum	2	E-51	0700-1900	ICP		
DOZ PVT E-54			C. Logan	2	E-54	0700-1900	ICP		
DOZ PVT E-101			A. Pezzi	1	E-101	0700-1900	ICP		
DOZ PVT E-102			M. Amos	3	E-102	0700-1900	ICP		
DOZ PVT E-104			P. Anderson	2	E-104	0700-1900	ICP		
W/T PVT E-95				1	E-95	0700-1900	ICP		
W/T PVT E-177			J. Thornburg	1	E-177	0700-1900	ICP		
W/T PVT E-262			P. Mallout	1	E-262	0700-1900	ICP		
HEQB BULLIS			G. Bullis	1	O-297	0700-1900	ICP		
HEQB DOWELL			R. Dowell	1	O-307	0700-1900	ICP		
6. Work Assignments:									
Identify sensitive sites.									
Identify suppression repair needs.									
Repair Fireline.									
7. Special Instructions:									
8. Communications									
Name	Ch	Function	Rx Freq	Rx Tone	Tx Freq	Tx Tone	Notes		
CDF C1	1	COMMAND	151.3550N	103.5 (T8)	159.3000N	136.5 (T4)	ALL BRANCHES & DIVISIONS		
CDF T31	7	TACTICAL	159.3825N	192.8 (T16)	159.3825N	192.8 (T16)			
CDF T18	14	AIR TO GROUND	159.3450N	192.8 (T16)	159.3450N	192.8 (T16)	ALL BRANCHES & DIVISIONS		
CALCORD	15	MEDICAL	156.0750N	156.7 (T6)	156.0750N	156.7 (T6)	ALL BRANCHES & DIVISIONS		
GUARD 14	16	EMERGENCY	168.6250N		168.6250N	110.9 (T1)	ALL BRANCHES & DIVISIONS		
9. Prepared by: Name:		Jack Worden		RESL		24 Hr Shift:		0	
		Signature: 				12 Hr Shift:		27	
ICS 204		Date/Time: 7/14/2021 2200				Total:		27	

ASSIGNMENT LIST (ICS 204 WF)

CONTROLLED UNCLASSIFIED
INFORMATION//BASIC

1. Incident Name: <p style="text-align: center;">River Incident</p>	2. Operational Period: Date From: 07/15/21 Date To: 07/16/21 Time From: 0700 Time To: 0700	3. Branch Staging <p style="text-align: center; font-size: 1.2em;">ICP</p> <p style="text-align: right;">Page 1 of 1</p>
--	---	---

4. Operations Personnel:	
Operations Section Chief: S. Lauderdale / J. Wight (T)	Night Ops: J. Ohs / J. Beery (T)
Branch Director:	Branch Safety:
Division/Group Supervisor: M. Shaw (12)	Air Attack: A. Sanchez

5. Resources Assigned:		** Resources Below in Bold are 12 Hour **					
Resource Identifier	ALS	LWD	Leader	Personnel	Request #	Hours	Reporting Location
T/F XKI 5051			C. Gerking	16	E-162	0700-1900	ICP
STC XSD 6440C			B. Boggleln	19	E-203	0700-1900	ICP

6. Work Assignments:
 Maintain 3 minute response time.
 Monitor command frequencies.

7. Special Instructions:

8. Communications

Name	Ch	Function	Rx Freq	Rx Tone	Tx Freq	Tx Tone	Notes
CDF C1	1	COMMAND	151.3550N	103.5 (T8)	159.3000N	136.5 (T4)	ALL BRANCHES & DIVISIONS
CALCORD	15	MEDICAL	156.0750N	156.7 (T6)	156.0750N	156.7 (T6)	ALL BRANCHES & DIVISIONS
GUARD 14	16	EMERGENCY	168.6250N		168.6250N	110.9 (T1)	ALL BRANCHES & DIVISIONS

9. Prepared by: Name: Jack Worden RESL 24 Hr Shift: 0

Signature: 12 Hr Shift: 35

ICS 204 Date/Time: 7/14/2021 2200 Total: 35

Chance Inwood - AOB8D


AIR OPERATIONS SUMMARY ICS-220													
Incident Name / Number		Sunrise	Start	Cutoff	Sunset	Time Prepared		Date Prepared		Prepared By			
River Incident / CAMMU014714		5:50	6:20	19:51	20:21	2015		Wednesday, July 14, 2021		Chance Inwood			
General Remarks, Safety Notes, Hazards, Air Operations Special Equipment, etc.													
TRACK ALL DIPSITE LOCATIONS / NUMBER OF DIPS / GALLONS TAKEN. TRACK ALL DROP LOCATIONS / NUMBER OF DROPS / GALLONS DROPPED ALL GPS DATA TO BE COLLECTED IN DEGREES, MINUTES, DECIMAL MINUTES, FORMAT. AVOID Aerial Application of Retardant / Foam / Agent within 300' of Waterways, Bodies of Water, etc. If Retardant / Foam / Agent is Dropped Within These Areas Immediately Notify the AOB8D and Provide the Following Information: Lat / Long, Estimated Number of Gallons and a Map Detailing The Area.													
Helibase Information			TFR Information			Rescue Ship Information							
Name River Helibase Latitude 37.30.521" Longitude 120.2.283'			SEE GENERAL REMARKS Request # A-117 Radius: 7 NM Altitude: 6,000 MSL Centerpoint: 37 19.70 Lat 119 49.92 Long NOTAMS: 8/6883 Frequency 120.7750 http://kfr.faa.gov/tfr2/list.html			Day Helist Night Helist Name Guard 822 Phone 209-743-5392 Make/Model UH60 Location Fresno Request Procedure for These Aircraft: Incident Communications See Medical Plan For Additional Info							
Frequencies	TX	Tone	RX	Tone	AM / FM	Position	Name	Phone	Trainee	Phone			
COMMAND	159.3000	136.5 (T14)	151.3550	103.5 (T18)	FM	AOBD	Matt Stanford	951-545-8205	Chance Inwood	209-694-5333			
Air/Ground Tactical	159.3450	192.8 (T16)	159.3450	192.8 (T16)	FM	AOBD		951-355-4522					
Air/Air Retary	120.7750		120.7750		AM	ASGS	Chance Inwood	209-694-5333	Jared Collins	858-353-6261			
Air Tactics	167.9875		167.9875		FM	ASGS							
Air Attack Briefing	128.2250		128.2250		AM	ASGS	Ryan Johnson	(530) 340-3099					
DECK	163.1000		163.1000		FM	HEBM							
						HLCO	John Zuniga	209-304-3464					
						HLCO							
						ATGS							
						ATGS							
CALCORD - MEDICAL	156.0750	156.7 (6)	156.0750	156.7 (6)	FM								
AIRGUARD - Emergency Only	168.6250	110.9 (1)	168.6250		FM								
HELICOPTERS (Use page 2 if Needed)													
FAA #	Type	Make/Model	Helibase	Avail	Start	Remarks	FAA #	Type	Make/Model	Helibase	Avail	Start	Remarks
M605CK	I	UH-60	Mariposa	0800	0800	A-55							
C520	II	BELL 205	Mariposa	0800	0800	A-8							
811KA	II	BELL 212	Mariposa	0800	0800	A-39							
2AH	II	BELL 212	Mariposa	0800	0800	A-41							
4TV	III	A-STAR 350	Mariposa	0800	0800	A-9							
2BH	III	BELL 206	Mariposa	0800	0800	A-58							
FIXED WING (Use Page 2 if Needed)													
FAA #	Type	Make/Model	Base	Avail	Start	Remarks	FAA #	Type	Make/Model	Base	Avail	Start	Remarks

MEDICAL PLAN (ICS 206)

1. Incident Name: River	2. Operational Period:	Date From:	7/15/21	Date To:	7/16/21
		Time From:	0700	Time To:	0700

3. Medical Aid Stations:			
Name	Location	Contact Number/Freq	Physician
MERT	Mt Bullion Camp	River Communications (916)883-0932	Yes
CAL-MAT (415)203-5654	River ICP	River Communications	Yes

4. Transportation (indicate air or ground):			
Ambulance Service	Location	Contact Number	Level of Service
Mercy Ambulance (Ground)	5081 Highway 140, Mariposa	River Communications	ALS
Sierra Ambulance (Ground)	40755 Winding Way, Oakhurst	River Communications	ALS
Air Methods (Air)	1329 Spanos Court, Modesto	River Communications	ALS

5. Hospitals:							
Hospital Name	Address,	Contact Number(s)/ Frequency	Travel Time		Trauma Center	Burn Center	Helipad
	Lat & Long Helipad		Air	Ground			
John C. Freemont Healthcare	5189 Hospital Rd. Mariposa N 37° 30.00 W -119°58.60	(209)966-3631	:19	1hr	EDAT	<input type="checkbox"/>	<input checked="" type="checkbox"/>
Mercy Medical Center	333 Mercy Ave Merced	(209)564-5000		1hr	EDAT	<input type="checkbox"/>	<input type="checkbox"/>
Community Regional Medical Ctr	2823 Fresno St. Fresno 93721 N 36° 44.58 W -119° 47.10	(559)442-2342	:32	1hr	Level 1	<input checked="" type="checkbox"/>	<input checked="" type="checkbox"/>

6. Special Medical Emergency Procedures	
<p>Line Emergency Crew Supervisor will contact Division Supervisor with patient complaint/condition and location.</p> <p>- Division Group Supervisor Contacts:</p> <ol style="list-style-type: none"> Closest EMS resource Communications Unit <p>- Communications Unit Contacts:</p> <ol style="list-style-type: none"> Ground or Air ambulance as requested. Operations Safety Medical Unit <p>- Division Supervisor or designee will serve as point of contact and run medical emergency on assigned channel.</p> <ol style="list-style-type: none"> A pre-assigned tactical frequency (i.e. CALCORD) should be used for IWI and only for duration of the emergency. <p>- Communications Unit will clear the Command channel for emergency traffic as needed for duration of the need.</p> <p>Direct all in camp medical issues to CALMAT.</p> <p>Camp Emergency</p> <p>- Medical Unit contacts</p> <ol style="list-style-type: none"> Communications Safety Logistics Operations Crew Supervisor Comp/Claims 	<p>Injury Reporting Procedures</p> <p>Nature of Injury: _____</p> <p>Location of Patient: _____</p> <p>Point of Contact: _____</p> <p>Transportation Requested by: Air ___ Ground ___</p> <p>Point of Pick-Up: _____</p> <p style="padding-left: 40px;">Lat: _____ Long: _____</p> <p>Patient Unit ID: _____</p> <p>Is an EMT with Patient: Yes ___ No ___</p> <p>Age: _____ Sex: Male ___ Female ___</p> <p>ALL EMERGENCIES---Secure the area and identify witnesses for later investigation. Keep an accurate log of events.</p> <p>**IN CAMP EMERGENCY**</p> <p>(619)818-8437</p>


Check box if aviation assets are utilized for rescue. If assets are used, coordinate with Air Operations.

7. Prepared by (Medical Unit Leader): J. Segura R. Beeson (T) **Signature:**

8. Approved by (Safety Officer): J. Buchmeier J. Novak (T) **Signature:**

ICS 206 NIMS IAP Date/Time: 7/13/2021 1700

ICS 205 - INCIDENT RADIO COMMUNICATIONS PLAN

1. Incident Name: River Incident		2. Date/Time Prepared Date: 07/14/2021 Time: 1600		3. Operational Period: Date From: 07/15/21 Time From: 0700		Date To: 07/16/21 Time To: 0700		
4. Communications								
Ch#	Function	Name	Assigned To	Rx Freq	Rx Tone	Tx Freq	Tx Tone	Notes
1	COMMAND	CDF C1	ALL BRANCHES	151.3550N	103.5 (T8)	159.3000N	136.5 (T4)	ALL BRANCHES & DIVISIONS
2	TACTICAL	CDF T26	DIV A / B / K	159.2925N	192.8 (T16)	159.2925N	192.8 (T16)	
3	TACTICAL	CDF T27	DIV U / W	159.3075N	192.8 (T16)	159.3075N	192.8 (T16)	
4	TACTICAL	CDF T28	DIV L	151.1825N	192.8 (T16)	151.1825N	192.8 (T16)	
5	TACTICAL	CDF T29	DIV M	151.3475N	192.8 (T16)	151.3475N	192.8 (T16)	
6	TACTICAL	CDF T30	DIV P / S	151.3925N	192.8 (T16)	151.3925N	192.8 (T16)	
7	TACTICAL	CDF T31	FSR	159.3825N	192.8 (T16)	159.3825N	192.8 (T16)	
8								
9								
10								
11								
12								
13	TACTICAL	VFIRE 25	BRIEFING	154.2875N	156.7 (T6)	154.2875N	156.7 (T6)	BRIEFING IN BASE CAMP
14	AIR TO GROUND	CDF T18	ALL BRANCHES	159.3450N	192.8 (T16)	159.3450N	192.8 (T16)	ALL BRANCHES & DIVISIONS
15	MEDICAL	CALCORD	ALL BRANCHES	156.0750N	156.7 (T6)	156.0750N	156.7 (T6)	ALL BRANCHES & DIVISIONS
16	EMERGENCY	GUARD 14	ALL BRANCHES	168.6250N		168.6250N	110.9 (T1)	ALL BRANCHES & DIVISIONS
17								
18								
19								
20	EMERGENCY	GUARD 14	ALL BRANCHES	168.6250N		168.6250N	110.9 (T1)	ALL BRANCHES & DIVISIONS
5. Special Instructions								
<p>TO CONFIRM YOU HAVE THE MOST CURRENT CLONE, ENSURE YOUR DISPLAY OF CHANNEL 16 OR 20 MATCHES CHANNEL 16 OR 20 OF THE 205 - HEIGHT AND POWER ARE KEY WHEN USING RADIOS; BE AT A HIGH POINT, USE A MOBILE IF POSSIBLE, AND USE RADIO RELAYS WHEN NEEDED</p>								
6. Prepared by (Communications Unit Leader): Name: C. JOHNS / K. COX				Signature: 		Date/Time: 07/14/21 1600		
ICS 205 - CONTROLLED UNCLASSIFIED INFORMATION//BASIC								

TRAINING MESSAGE

TRAINERS

**REMEMBER TO REVIEW THE TASK BOOK WITH YOUR
TRAINEE EACH DAY AND SET GOALS FOR THE
OPERATION PERIOD.**

TRAINEES

**ALWAYS KEEP YOUR TASK BOOK SECURED.
IF LOST, YOU RUN THE RISK OF LOSSING CREDIT FOR
THE TASKS COMPLETED.**

**Don't train until you get it right, train until you can't get
it wrong!!**

**Any questions please contact the
Training Specialists:**

Shane Galvez – 530-410-5592

Or

Dottie Shaw – 619-971-1701



CAL FIRE INCIDENT MANAGEMENT TEAM 6

Jeff Veik- INCIDENT COMMANDER



DEMOBILIZATION PLAN - SUMMARY RIVER CA-MMU-14714

GENERAL INFORMATION

The Demobilization Plan is developed to facilitate the orderly removal and checkout of resources on the incident. By definition, surplus personnel are available for release if they have rested for a minimum of 8 hours, are cleaned up, outfitted and have a vehicle ready to depart to their next destination.

GENERAL GUIDELINES

- **NO RESOURCES WILL LEAVE THE INCIDENT UNTIL AUTHORIZED TO DO SO BY THE DEMOB UNIT.**
- Efforts will be made to ensure that all released personnel arrive at their destination prior to 2200 hours.
- All Resources will arrive at the Demobilizations Unit at their scheduled time Only.
- All government and hired vehicles leaving the incident will have a safety inspection. If a vehicle is within 1,000 miles of a "B" service, it is the responsibility of the resource to contact Ground Support and have an oil change prior to their scheduled demobilization time.
- **All Rental Vehicles will receive a safety inspection prior to leaving the incident.**
- All trainees are to keep their time up to date and report to the Training Specialist with their task books and evaluations prior to completion of the demobilization process.
- All strike team leaders are responsible to call **South Ops at 1-800-237-3703** immediately upon being released from the incident

RESPONSIBILITIES

Unit Leaders will declare resources excess to their **Section Chief**. **Section Chiefs** will declare excess resources to the Planning Section Chief through the **Resource Unit Leader**. This should be done 36 hours in advance of anticipated release. **Use the Declaration of Excess Resources sheet or General Message Form (ICS-213) to list all excess resources.** Include the resource name, request number, name of person, date and time of declared excess, and time in which the resource will be eligible to leave. Send to the **RESOURCE UNIT** where the resource will be determined to be surplus to the incident. Surplus resources will then be able to report to the **DEMOB UNIT**, receive a Demobilization Checkout Form (ICS 221), get the appropriate ICS 221 signatures, and then return the completed ICS 221 to the DEMOB UNIT prior to final release or reassignment. Resources are not to contact **South Ops** or the expanded dispatch center unless instructed to do so by the Demobilization Unit.

RELEASE PRIORITIES

1. **Organized fire departments**
2. **OES engines**
3. **Hired personnel and equipment**
4. **Other agencies (USFS, BLM, etc.)**
5. **Out of region CAL FIRE forces**
6. **Within Region CAL FIRE Forces**
7. **Unit CAL FIRE Forces**

TRAVEL INFORMATION

All resources will meet agency specific requirements on hours of travel per day. For CAL FIRE hand crews, a full 24 hour reset period shall be adhered to before departing from the incident. After a crew's last operational period they shall begin the demobilization release procedure during their 24 hour off shift. In addition, they must use the following complete 24 hour period as reset time before they depart from the incident.

FINANCE MESSAGE

FEDERAL RESOURCES

- Submit CTR's to TIME for documentation
- Any questions, please contact the Remote Incident Support Team
 - (480) 608-2175 or Email: 2021.sw.rist@firenet.gov

CAL FIRE TIME UNIT (Personnel and Hired Equipment)

- CAL FIRE PERSONNEL – Ensure you have started your eFC-33's and update after each shift. Please make sure Epay schedules are up to date.
- HIRED EQUIPMENT SUPPLIERS – Check-in with the TIME Unit and drop off your agreements.
- SHIFT TICKET BOOKS – Available in the TIME Unit for agency line supervisors only.

DIVISION / GROUP - LINE SUPERVISORS

- Please turn in hired equipment shift tickets at the end of each shift.

COMP / CLAIMS

- Damage Claims (suppression, property, vehicle),
 - ICS-213. We will need location, description of damages, and your contact information.

WATER SOURCE LOG

Please scan to document WATER use:



SHIFT TICKET EXAMPLE

EMERGENCY SHIFT TICKET and EVALUATION FORM					Contractor Name		
Incident or Project Name RIVER			Incident Number CAMMU 014714		Request Number E#		
Agreement Number XXX - 000000 - 00					Operator #1 BOB SMITH		
Equipment Make CAT					Operator #2 TOM SMITH		
Equipment Model / Type D6XM					Operator Furnished By: <input checked="" type="checkbox"/> Contractor <input type="checkbox"/> Government		
Serial Number 111111					Operating Supplies Furnished By: <input checked="" type="checkbox"/> Contractor <input type="checkbox"/> Government		
Licence Number 111111					Equipment Status <input checked="" type="checkbox"/> Inspected <input checked="" type="checkbox"/> Under Agreement		
Equipment Use (Circle) Hours Days / Miles					Released by Government <input type="checkbox"/>		
Date Mo / Day Start Stop Work Assignment					Withdrawn by Contractor <input type="checkbox"/>		
7/12 0700 2400 17 DIV M					NO DAMAGE/ NO CLAIMS		
7/13 0001 0700 7 DIV M							
Vendor Rating Poor* Avg. Good Exc. N/A					Govt. Rep. Name and Position - PRINT Mike Weber		
Met Performance Expectations					Govt. Rep. Signature <i>Mike Weber</i>		
Equipment in Safe Working Condition					Contractor Signature <i>Bob Smith</i>		
Operator Skill Level					Date 07/13/21		
Operates Safely					Time 0800		
Operator's Cooperation Level					Remarks/Comments **		
Overall Performance							
<p>* NOTE: Any rating of POOR requires an explanation in Comment Section. **Final evaluation or for more documentation, use an ICS Form 230 or equivalent.</p>					CALFIRE 297 (Rev 3-2011)		
Pink - Finance		Blue - Home Unit HE Coordinator		Yellow - Vendor		White - Govt Representative	

EMERGENCY SHIFT TICKET and EVALUATION FORM					Contractor Name		
The responsible Government Officer will complete this form each shift					DUDE TRANSPORT		
Incident or Project Name RIVER			Incident Number CAMMU 014714		Request Number E # Here		
Agreement Number XXX - 000000 - 00					Operator #1 BOB SMITH		
Equipment Make TRANSPORT/ KENWORTH					Operator #2 TOM SMITH		
Equipment Model / Type COZAD TRAILER /26 WHEELS					Operator Furnished By: <input checked="" type="checkbox"/> Contractor <input type="checkbox"/> Government		
Serial Number 1XP3ESMP14239012					Operating Supplies Furnished By: <input checked="" type="checkbox"/> Contractor <input type="checkbox"/> Government		
Licence Number 9999999					Equipment Status <input checked="" type="checkbox"/> Inspected <input checked="" type="checkbox"/> Under Agreement		
Equipment Use (Circle) Hours Days / Miles					Released by Government <input type="checkbox"/>		
Date Mo / Day Start Stop Work Assignment					Withdrawn by Contractor <input type="checkbox"/>		
7/12 0700 2400 17 DIV M					NO DAMAGE/ NO CLAIMS		
7/13 0001 0700 7 DIV M							
Vendor Rating Poor* Avg. Good Exc. N/A					Govt. Rep. Name and Position - PRINT Mike Weber		
Met Performance Expectations					Govt. Rep. Signature <i>Mike Weber</i>		
Equipment in Safe Working Condition					Contractor Signature <i>Bob Smith</i>		
Operator Skill Level					Date 07/13/21		
Operates Safely					Time 0800		
Operator's Cooperation Level					Remarks/Comments **		
Overall Performance							
<p>* NOTE: Any rating of POOR requires an explanation in Comment Section. **Final evaluation or for more documentation, use an ICS Form 230 or equivalent.</p>					CALFIRE 297 (Rev 3-2011)		
Pink - Finance		Blue - Home Unit HE Coordinator		Yellow - Vendor		White - Govt Representative	

Turn shift tickets into Time Unit.

eFC-33 INITIAL INPUT FORM

1 2 3 4 5 6 7

Overhead: Complete one form per person.
All Others: Complete one form per vehicle.

Request Number	-
O - 1234	

INCIDENT	State	Agency	Incident Number	Incident Name	Incident Index Code	Incident PCA Code
	CA					
RESOURCE	Strike Team	Resource ID - Fire Assignment	Home Station / Office Location			
	S T	E-3499	Mariposa		4200	2350

YOUR NORMAL DUTY SCHEDULE	24 Hr. 8-24 Hr. 7-7	Other	YOUR AGENCY	HOME UNIT	COMMIT	RELEASE	YOUR CELL PHONE #
	<input checked="" type="checkbox"/> One Box		CAL FIRE	S L U			

PERSONNEL	Schedule	Last Name	First Name	Rank or Classification	# OF Regular Duty Scheduled Hours per Day							
EMPLOYEE 1	A B Other				Sun	Mon	Tue	Wed	Thu	Fri	Sat	
EMPLOYEE 2												
EMPLOYEE 3												
EMPLOYEE 4												
EMPLOYEE 5												
EMPLOYEE 6												

VEHICLE	Schedule	If Other, explain	Radio ID	Kind of Vehicle	ID No. x No.
VEHICLE 1	A B Other				
VEHICLE 2					
	<input checked="" type="checkbox"/> One Box		E-4271	FTH	0 2 x 1 2 3
	Chainsaw Quantity:	Portable Pump? Y / N			

Dozers and Transports go on a single form. All others, use one form per individual vehicle.

ADDITIONAL INFORMATION BELOW





PUBLIC INFORMATION



Official Sources of Public Information

Incident Information Line: (844.668.3473)

Incident Media Line: (209.457.0552)

Incident Website: www.fire.ca.gov

Email Signup: <https://tinyurl.com/CALFIREMEDIA>

STATUS	
Incident Start Date: 07/11/2021	Incident Start Time: 2:11 p.m.
Acreage:	Containment:
Cause: Under Investigation	Total Personnel:

Media Law

The California State Penal Code Section 409.5(d) allows the news media to enter scenes of disaster, riot, or civil disturbance. Properly identified members of the news media should not be restricted from entering locations specified within the code. However, this does not include crime scenes, and does not imply that the news media may interfere with incident operations while they are in the areas of concern. If entering such a location that is hazardous, they should be advised; media access cannot be prevented for safety reasons unless their presence would impede CAL FIRE’s mitigation of the incident or the disturbing of evidence. When working around the media, remember:

- Media is **not permitted** on private property without the property owners permission.
- If approached and questioned by the media and or the public, talk about your assignment or task at hand. Remember to wear all the appropriate PPE.
- If needed call for an incident PIO through the chain of command.
- Never speculate, give opinions or speak for others.
- There is no such thing as an “off the record” comment.

CAL FIRE Social Media Policy (Social Media 0691)

Social Media is increasingly being used by public agencies, the media as well as the public. This form of communication continues to grow rapidly in order to supply the instant gratification needs of society. Therefore when on a CAL FIRE incident you will adhere to the CAL FIRE Social Media Policy, 0691. You can get further information about the CAL FIRE Social Media Policy from the incident Public Information Officer. While assigned to the incident, there will be no posting of:

- Inappropriate information or materials
- No opinions
- No endorsements
- Inappropriate pictures or videos

Lost and Found

The Information Section will manage Lost and Found items for the incident. If you have lost an item leave your contact information and what you have lost at the Information Section. If you have found an item on the incident bring the item to the Information Section with your contact information as well.

Incident Base Camp Mailing Address

**c/o Public Information Office/Trailer
5007 Fairgrounds Rd.
Mariposa, CA 95338
Mariposa District Fair**



INCIDENT PEER SUPPORT:



Team members are available on the incident for any peer support related needs. The best way to get a hold of them is to call them directly or stop by the ESS Trailer

In addition, there is an onsite clinician available to meet on an individual and/or group basis

Jeremy Sanders 916-281-6472

John Kiszka 530-598-2615

or

CAL FIRE 24 Hr. Peer Support/Helpline

916-445-4337

Below are other Team Members not on the incident who can also be contacted directly:

Tony Howard 916-224-1543

Mike Aiello 916-584-0548

Warren Parrish 916-823-6641

Krissy Shaefer 619-592-6337

Amber Henderson 805-794-1690

John Kiszka 530-598-2615

Chris Lomanto 916-247-6974

Amy Head 916-956-3277

Noelle Bahnmilller 916-661-0011

Mike Deleo 916-661-0724

Shawna Powell 530-717-0667

Watch for the signs and symptoms of stress in yourself and the people around you. Try and stay positive and get much needed rest when you can. We can do this, together!

Stay Healthy, Stay Alert and Stay Strong!



FACILITIES MAP
RIVER INCIDENT
 CA-MMU-014714
 07/14/2021

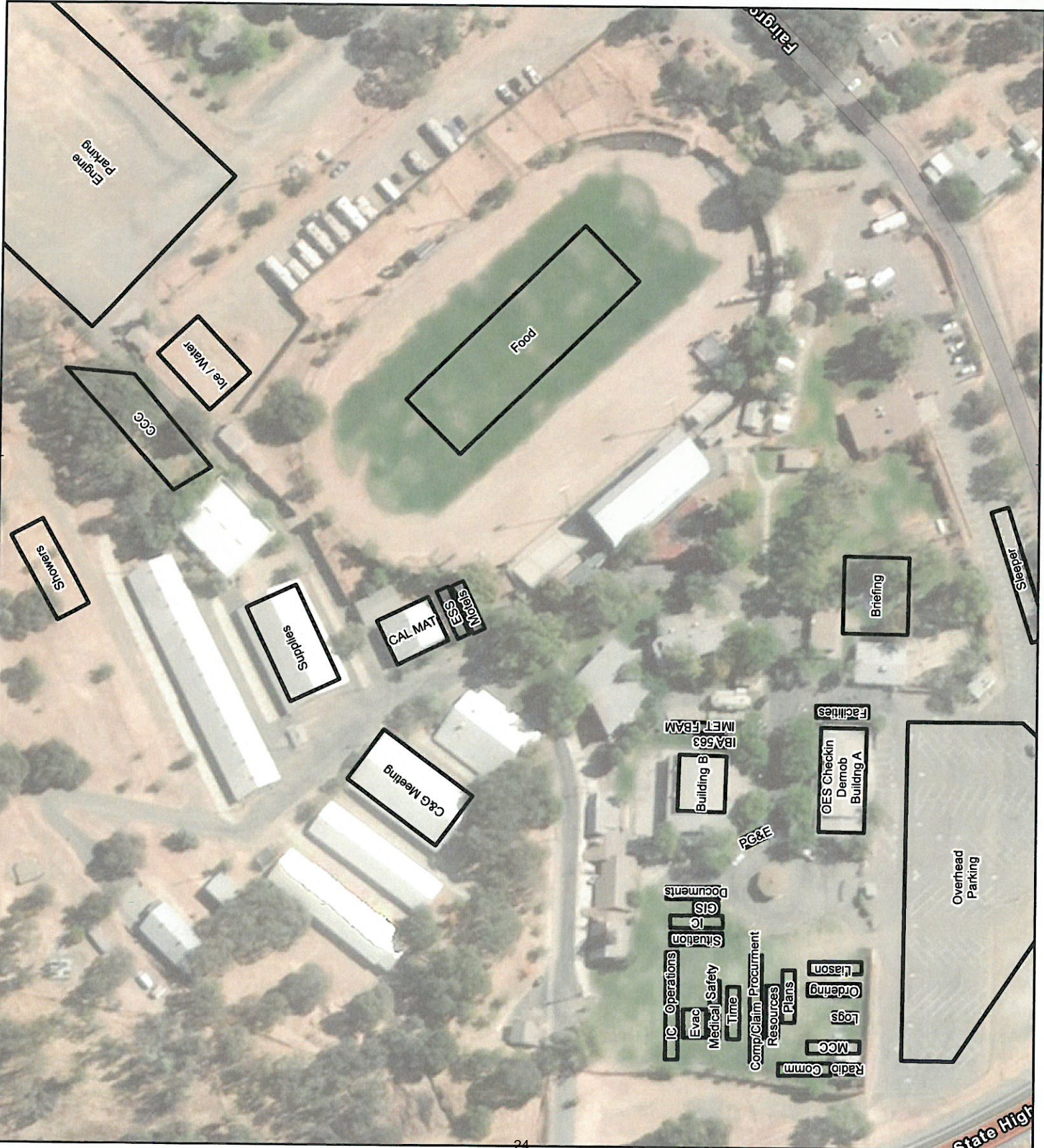
□ Facility

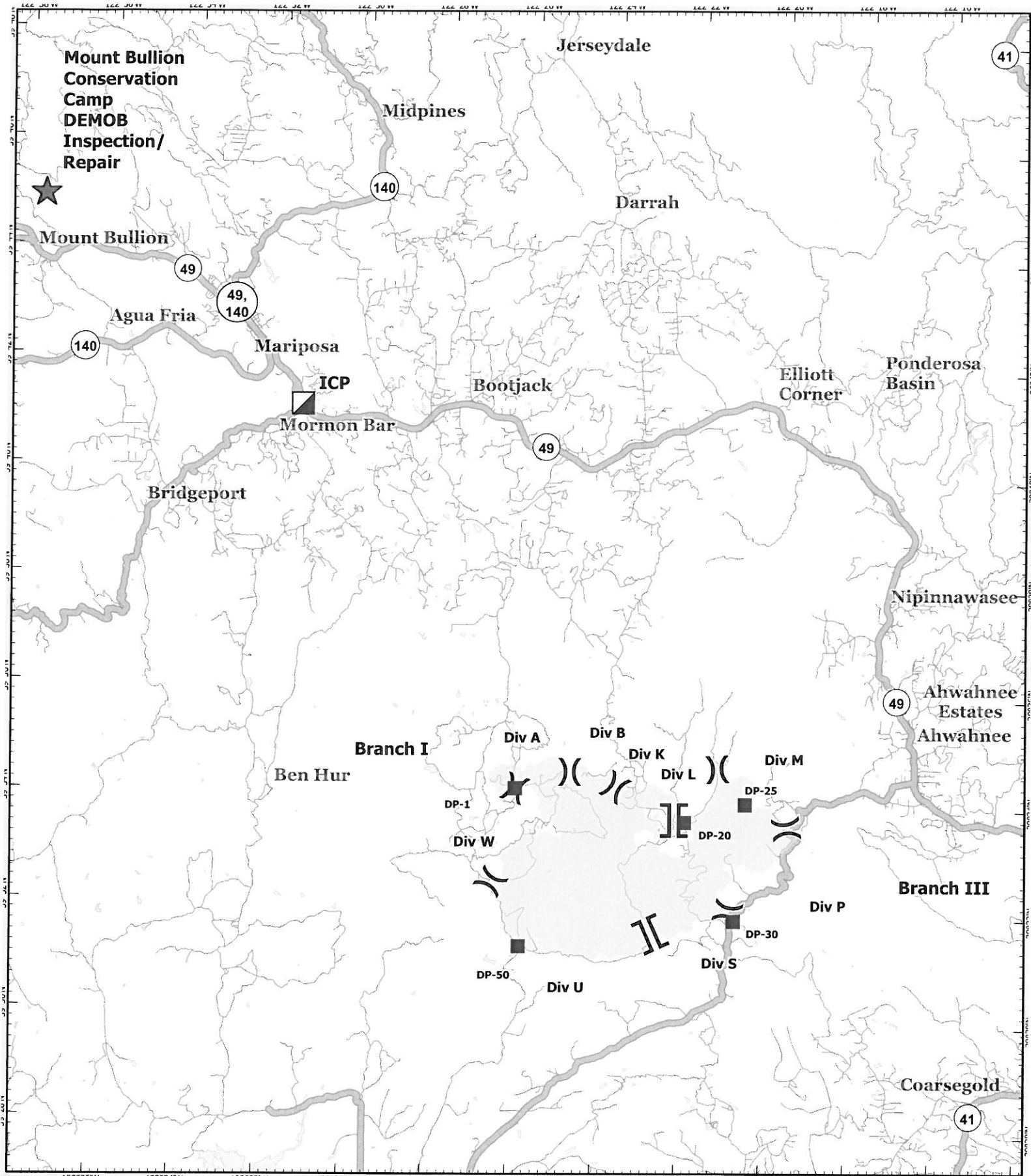


Miles
 0 1/4 1/2

Datum: NAD 83 1:1,595

DISCLAIMER: The data in this map is for informational purposes only and should not be used for informational purposes. The information on this map was generated from GIS data maintained by some agencies and is not necessarily accurate to mapping, surveying, or engineering standards.





Datum: NAD 83 1:167,411

Miles

0 1/4 1/2

TRANSPORTATION MAP

River Incident

CA-MMU-014714

July 15, 2021

- () Division Break
- || Branch Break
- ▣ Incident Command Post
- Drop Point
- ▨ Wildfire Daily Fire Perimeter
- ▬ Major Roadway
- Local or 4WD road



UNIT LOG (ICS 214)

1. Incident Name: <p align="center">River Incident</p>	2. Operational Period: Date From: 7/15/21 Date To: 7/16/21 Time From: 0700 Time To: 0700
--	--

3. Unit Name/Designators	4. Unit Leader (Name and ICS Position)
---------------------------------	---

5. Personnel Assigned/Designators

NAME	ICS POSITION	HOME BASE

6. Activity Log (Continue on Reverse)

TIME	MAJOR EVENTS

7. Prepared By:	Date/Time:
------------------------	-------------------

