

121°54.5'W

121°54'W

121°53.5'W

121°53'W

121°52.5'W

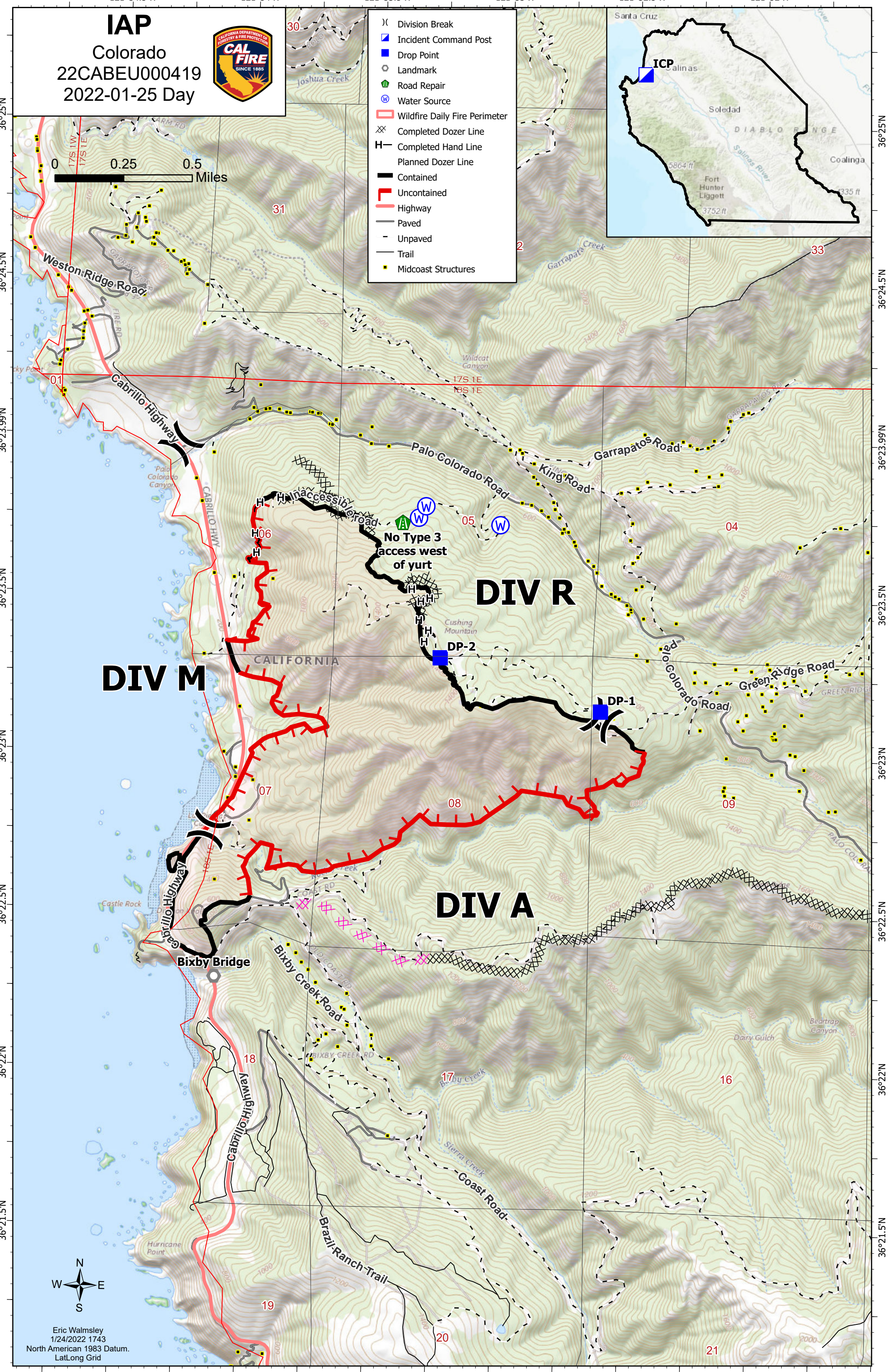
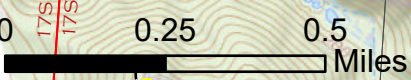
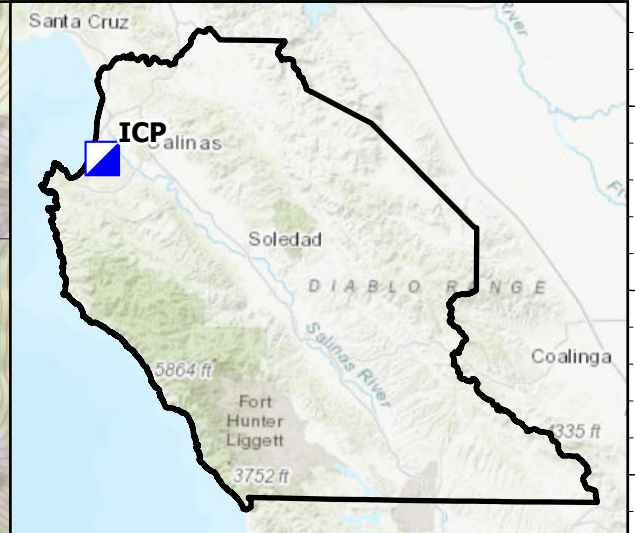
121°52'W

IAP

Colorado
22CABEU000419
2022-01-25 Day



- (X) Division Break
- ▣ Incident Command Post
- Drop Point
- Landmark
- 🌳 Road Repair
- 🌊 Water Source
- ▭ Wildfire Daily Fire Perimeter
- ⊗ Completed Dozer Line
- H Completed Hand Line
- Planned Dozer Line
- ▬ Contained
- ▬ Uncontained
- ▬ Highway
- ▬ Paved
- ▬ Unpaved
- ▬ Trail
- Midcoast Structures



DIV M

DIV R

DIV A



Eric Walmsley
1/24/2022 1743
North American 1983 Datum.
LatLong Grid

121°54.5'W 121°54'W 121°53.5'W 121°53'W 121°52.5'W 121°52'W 121°51.5'W

36°25'N
36°24.5'N
36°23.99'N
36°23.5'N
36°23'N
36°22.5'N
36°22'N
36°21.5'N

36°25'N
36°24.5'N
36°23.99'N
36°23.5'N
36°23'N
36°22.5'N
36°22'N
36°21.5'N