

119°21'W 119°20'W 119°19'W 119°18'W 119°17'W 119°16'W 119°15'W

Aspen Fire
CA-SNF-001732
Infrared Interpretation
Imagery Date:
07/24/2013 2217 Hrs
Heat acres: 2,716



Clouds!

37°19'N

37°18'N

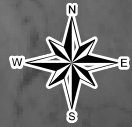
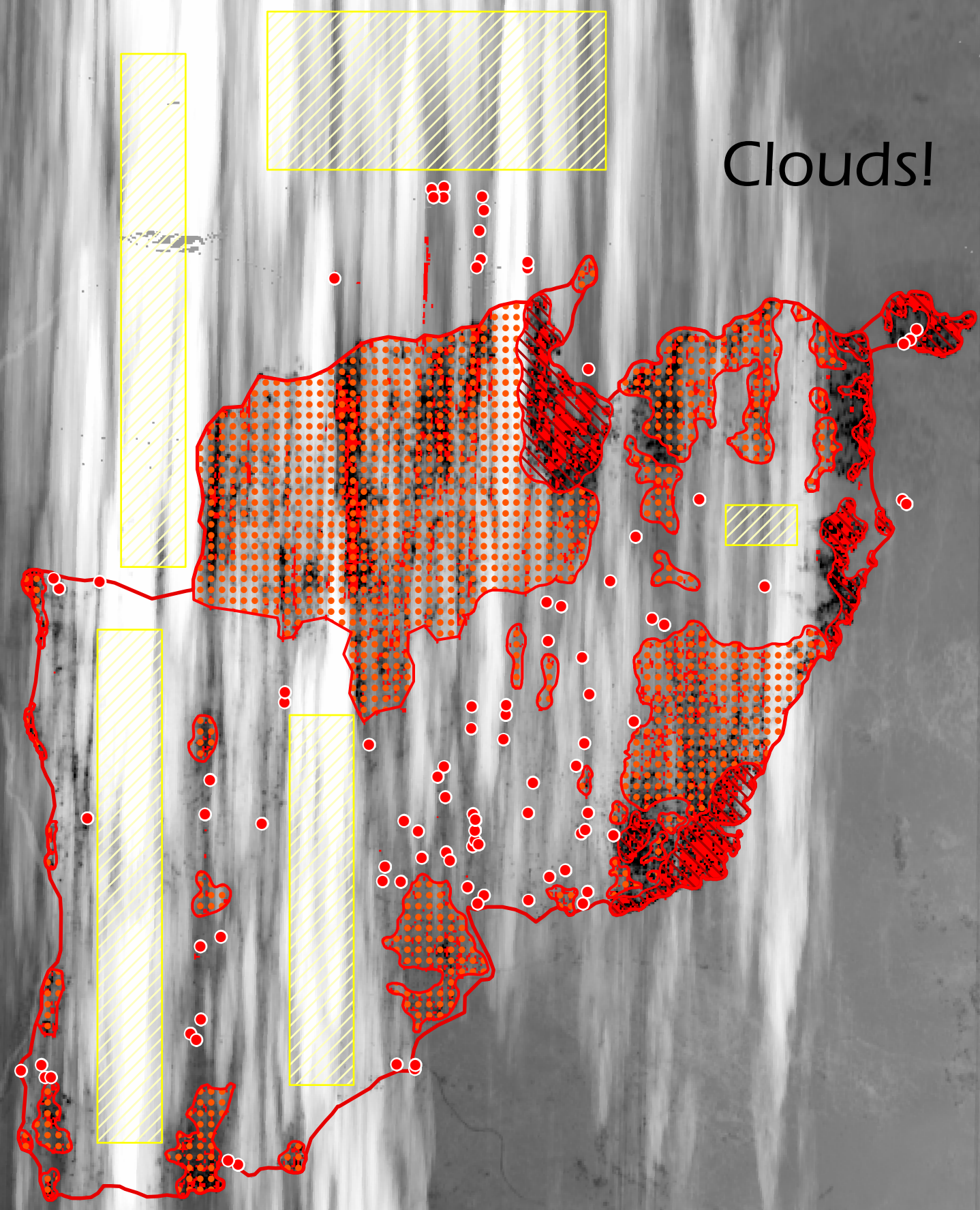
37°17'N

37°20'N

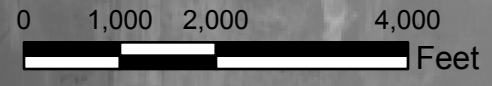
37°19'N





37°18'N

37°17'N



IRIN: Joe Larson
Map produced:
7/25/2013 0041 hrs



-  Heat Perimeter
 -  Intense Heat Areas
 -  Scattered Heat Areas
 -  Isolated Heat Sources
- NAD 1983 UTM Zone 11N

119°20'W 119°19'W 119°18'W 119°17'W 119°16'W 119°15'W