

119°21'W 119°20'W 119°19'W 119°18'W 119°17'W 119°16'W 119°15'W

**Aspen Fire**  
CA-SNF-001732  
**Infrared Interpretation**  
Imagery Date:  
07/24/2013 2217 Hrs  
Heat acres: 2,716



37°19'N

37°18'N

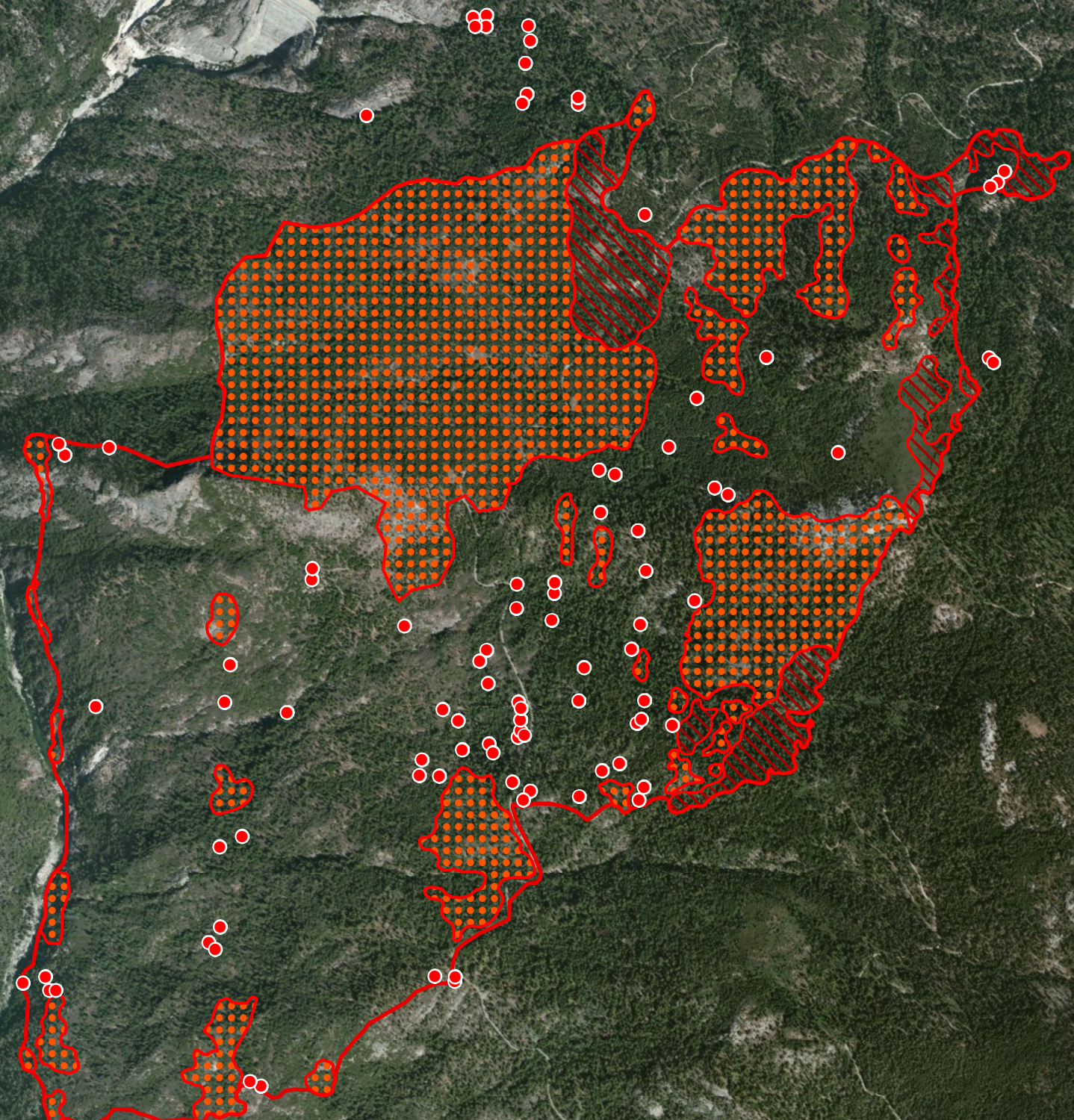
37°17'N

37°20'N





37°19'N

37°18'N

37°17'N



IRIN: Joe Larson  
Map produced:  
7/25/2013 0030 hrs

-  Heat Perimeter
  -  Intense Heat Areas
  -  Scattered Heat Areas
  -  Isolated Heat Sources
- NAD 1983 UTM Zone 11N

Source: Esri, DigitalGlobe, GeoEye, i-cubed, USDA, USGS, AEX, Getmapping, Aerogrid, IGN, IGP, swisstopo, and the GIS User Community

119°20'W 119°19'W 119°18'W 119°17'W 119°16'W 119°15'W