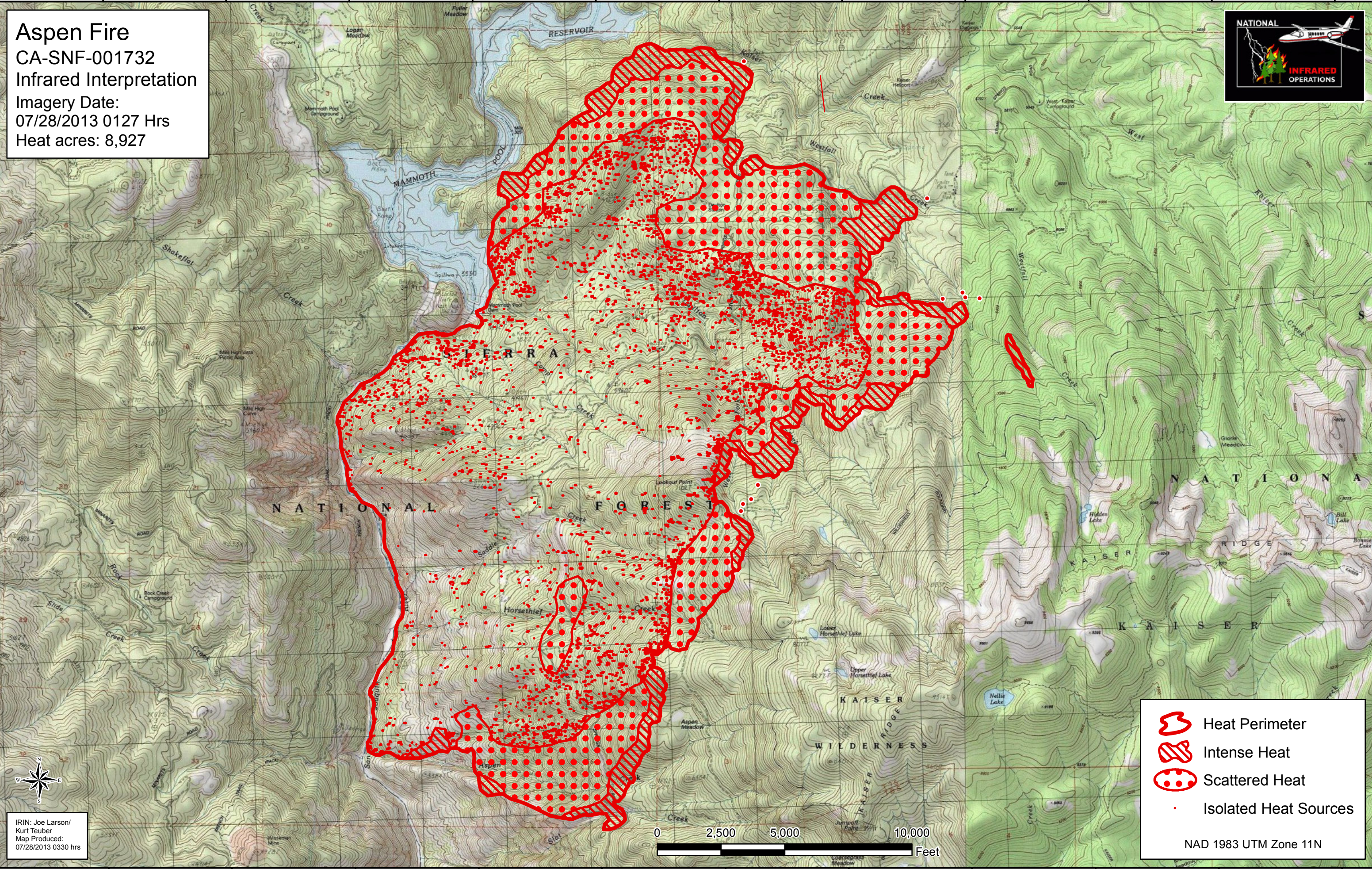






**Aspen Fire**  
CA-SNF-001732  
Infrared Interpretation  
Imagery Date:  
07/28/2013 0127 Hrs  
Heat acres: 8,927



-  Heat Perimeter
-  Intense Heat
-  Scattered Heat
-  Isolated Heat Sources

NAD 1983 UTM Zone 11N

IRIN: Joe Larson/  
Kurt Teuber  
Map Produced:  
07/28/2013 0330 hrs



119°22'W 119°21'W 119°20'W 119°19'W 119°18'W 119°17'W 119°16'W 119°15'W 119°14'W 119°13'W 119°11'W

37°21'N 37°20'N 37°19'N 37°18'N 37°17'N 37°16'N

RESERVOIR  
MAMMOTH  
SIERRA  
NATIONAL FOREST  
KAISER  
WILDERNESS  
RIDGE

Shakefest  
Creek  
Mammoth Pool  
Spillway  
Mammoth Pool Dam  
Lookout Point  
Saddle  
Horsethief  
Creek  
Upper Horsethief Lake  
Nellie Lake  
Aspen Meadow  
Creek

Fuller Meadow  
Logan Meadow  
Kaiser Meadows  
Westfall  
Creek  
West  
Creek  
Gloria Meadow  
Hidden Lake  
Bill Lake  
Bonnie Lake  
Kaiser  
RIDGE  
KAISER  
WILDERNESS  
RIDGE  
Aspen Meadow  
Creek  
Jumpoff Point