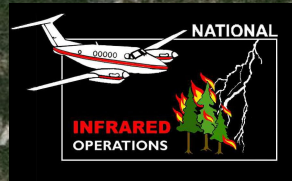


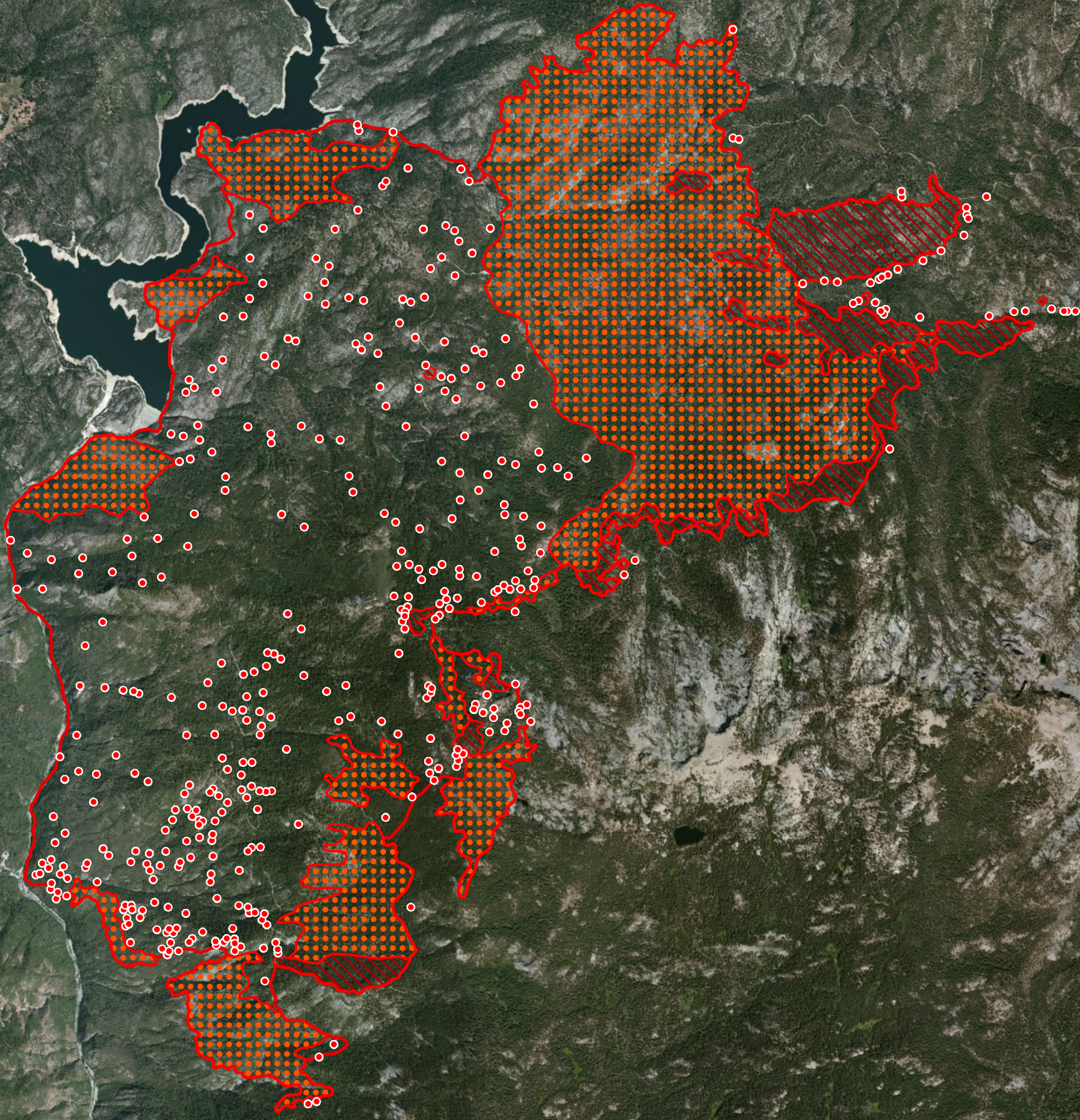
119°20'W 119°19'W 119°18'W 119°17'W 119°16'W 119°15'W 119°14'W 119°13'W 119°12'W

**Aspen Fire**  
CA-SNF-001732  
**Infrared Interpretation**  
Imagery Date:  
07/31/2013 2100 Hrs  
Heat acres: 16,204



37°24'N  
37°23'N  
37°22'N  
37°21'N  
37°20'N  
37°19'N  
37°18'N  
37°17'N  
37°16'N  
37°15'N  
37°14'N




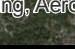
37°24'N  
37°23'N  
37°22'N  
37°21'N  
37°20'N  
37°19'N  
37°18'N  
37°17'N  
37°16'N  
37°15'N  
37°14'N



IRIN: Joe Larson, Alan Peters(t)  
Map produced:  
8/1/2013 0059 hrs

0 2,750 5,500 11,000



-  Heat Perimeter
  -  Intense Heat Areas
  -  Scattered Heat Areas
  -  Isolated Heat Sources
- NAD 1983 UTM Zone 11N

119°20'W 119°19'W 119°18'W 119°17'W 119°16'W 119°15'W 119°14'W 119°13'W 119°12'W

Map produced by: GeoEye, Earthstar, USDA, USGS, AEX, Getmapping, Aerogrid, IGN, IGP, swisstopo, and the GIS User Community