

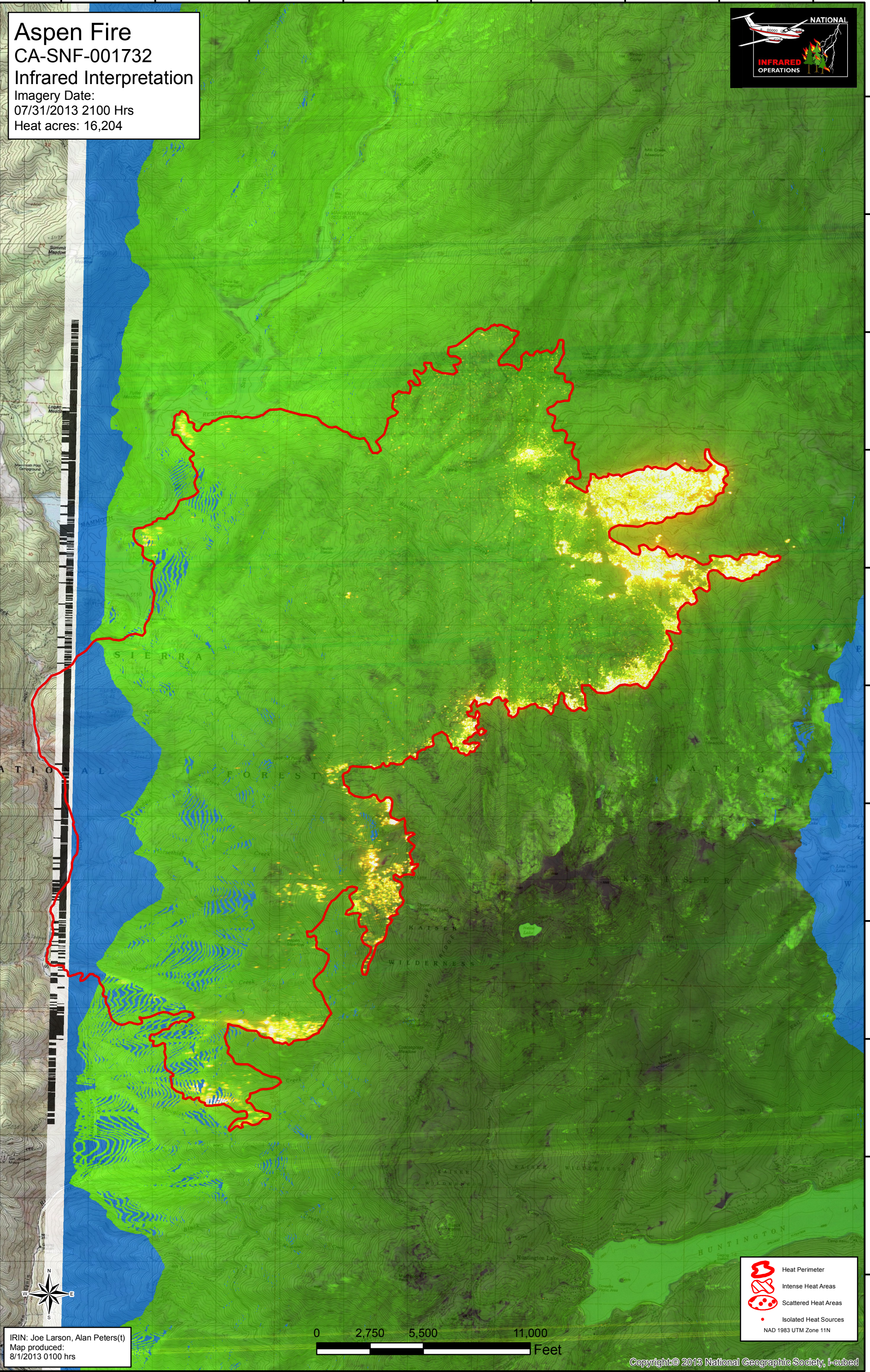
119°20'W 119°19'W 119°18'W 119°17'W 119°16'W 119°15'W 119°14'W 119°13'W 119°12'W

Aspen Fire
CA-SNF-001732
Infrared Interpretation
Imagery Date:
07/31/2013 2100 Hrs
Heat acres: 16,204



37°24'N
37°23'N
37°22'N
37°21'N
37°20'N
37°19'N
37°18'N
37°17'N
37°16'N
37°15'N
37°14'N

37°24'N
37°23'N
37°22'N
37°21'N
37°20'N
37°19'N
37°18'N
37°17'N
37°16'N
37°15'N
37°14'N



- Heat Perimeter
- Intense Heat Areas
- Scattered Heat Areas
- Isolated Heat Sources

NAD 1983 UTM Zone 11N

IRIN: Joe Larson, Alan Peters(t)
Map produced:
8/1/2013 0100 hrs

0 2,750 5,500 11,000 Feet

119°20'W 119°19'W 119°18'W 119°17'W 119°16'W 119°15'W 119°14'W 119°13'W 119°12'W