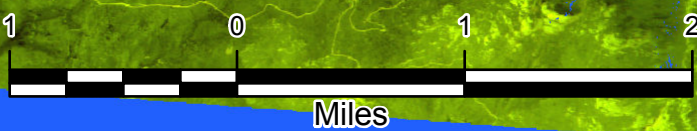
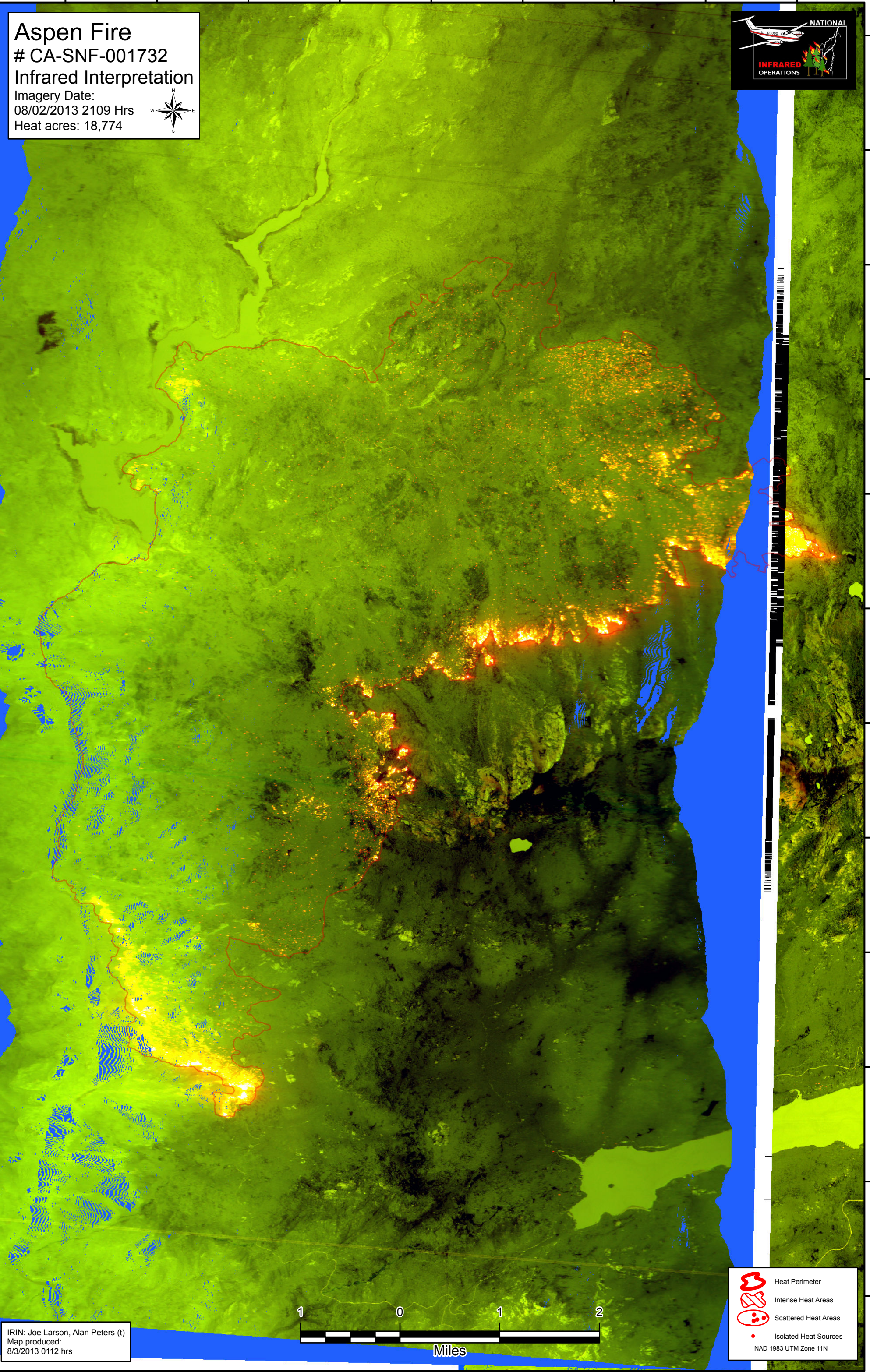
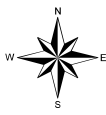






119°20'W 119°19'W 119°18'W 119°17'W 119°16'W 119°15'W 119°14'W 119°13'W 119°12'W

37°24'N
37°23'N
37°22'N
37°21'N
37°20'N
37°19'N
37°18'N
37°17'N
37°16'N
37°15'N
37°14'N
37°13'N

Aspen Fire
CA-SNF-001732
Infrared Interpretation
Imagery Date:
08/02/2013 2109 Hrs
Heat acres: 18,774



IRIN: Joe Larson, Alan Peters (t)
Map produced:
8/3/2013 0112 hrs

-  Heat Perimeter
 -  Intense Heat Areas
 -  Scattered Heat Areas
 -  Isolated Heat Sources
- NAD 1983 UTM Zone 11N

119°20'W 119°19'W 119°18'W 119°17'W 119°16'W 119°15'W 119°14'W 119°13'W 119°12'W 119°11'W